



**WHELEN** AEROSPACE TECHNOLOGIES

TOP PRODUCTS | PART 27



LED LIGHTING • HID LIGHTING

[WWW.FLYWAT.COM](http://WWW.FLYWAT.COM)

# PARMETHEUS™ G3

PAR 36 PAR 46 PAR 64

5 YEAR WARRANTY

## LED TAXI & LANDING

MODEL	PART #	DESCRIPTION	CANDLE POWER	AMPS/VOLTS
<b>A.</b> P36G3L	01-0772102-10	Parmetheus™ G3 Par 36 LANDING • 14V-28V	136,273	3.8 Amps @ 14 VDC 1.9 Amps @ 28 VDC
<b>B.</b> P36G3T	01-0772102-15	Parmetheus™ G3 PAR 36 TAXI • 14V-28V	35,000	3.8 Amps @ 14 VDC 1.9 Amps @ 28 VDC
<b>C.</b> P46G3L	01-0790906-00	Parmetheus™ G3 Par 46 LANDING • 14V-28V	228,044	6.0 Amps @ 14 VDC 2.7 Amps @ 28 VDC
<b>D.</b> P64G3L	01-0772128-00	Parmetheus™ G3 PAR 64 LANDING • 28VDC OR AC	1,000,000	9.3 AMPS @ 28VDC

2.5 TIMES BRIGHTER THAN  
THE PARMETHEUS™ PLUS

- Industry-Leading Performance
- Minimal reduction in output over time due to thermal overload
- Variable voltage 14-28 VDC
- RTCA DO-160 Environmental Tested
- Now with a sealed lens
- STC & PMA Approved

**A.** PARMETHEUS™ G3 LED LANDING



**B.** PARMETHEUS™ G3 LED TAXI



**C.** PARMETHEUS™ G3 LED LANDING



**D.** PARMETHEUS™ G3 LED LANDING



BULB CHART

GE BULB	G3
4416	P36G3L
4505	P36G3L
4509	P36G3L
4587	P36G3T
4591	P36G3L
4593	P36G3L
4594	P36G3L
4595	P36G3L
4596	P36G3L
4623	P36G3T
4626	P36G3L
4627	P36G3L
Q4631	P36G3L
Q4632	P36G3L
4413	P46G3L
4313	P36G3L
4421	P46G3L
4435	P46G3L
4522	P46G3L
4537	P46G3L
4551	P46G3L
4553	P46G3L
4554	P46G3L
4580	P46G3L
4581	P46G3L
Q4554	P46G3L
Q4566	P46G3L
4570	P46G3L
4571	P46G3L
4552	P64G3L
4557	P64G3L
4559	P64G3L
4559X	P64G3L

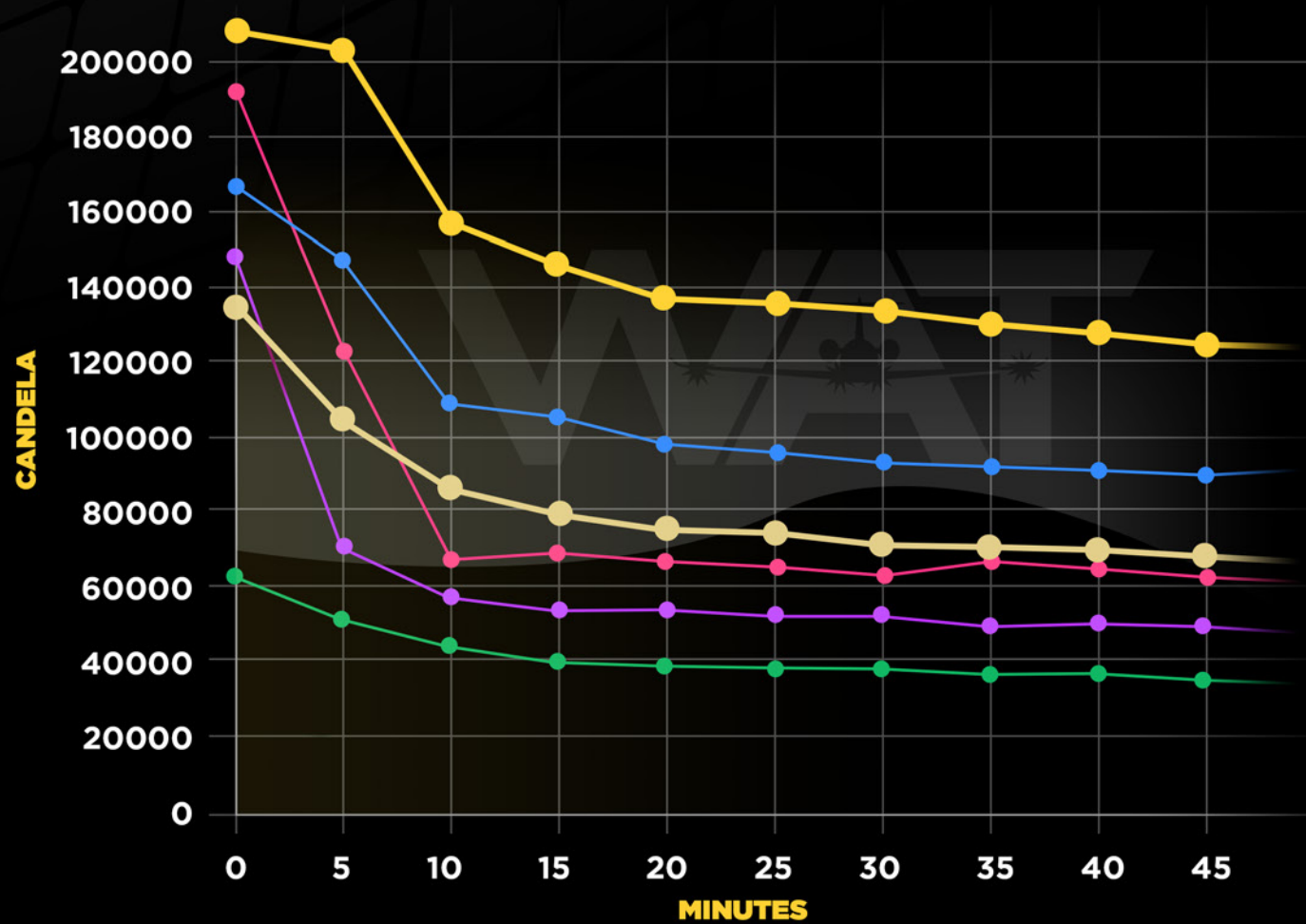
# — PARMETHEUS™ G3 — PARMETHEUS™ DUO —

PAR  
36

PAR  
46

LED  
LIGHTS

Whelen Aerospace Technologies is proud to announce the newest member of the Parmetheus™ product family, the Parmetheus™ G3. Keeping the tradition of industry leading performance and value, the new G3 Series is 2.5 times brighter than the Parmetheus™ Plus all while maintaining the same form, fit and functionality of a drop-in LED replacement for legacy landing lights. Available in PAR-36 size, the G3 is now available in variable voltage 14-28 VDC.



**CANDELA**  
OUTPUT OVER TIME

**WAT**  
Parmetheus™ G3  
Par 46

**SUNSPOT**  
Par 46  
2130-LX

**SUNSPOT**  
Par 46  
2230-4580

**WAT**  
Parmetheus™ G3  
Par 36

**SUNSPOT**  
36 LX/HX

**SUNSPOT**  
36-4000

- Variable Voltage 14-28 VDC
- Landing + Taxi Light all in one
- Sealed Lens
- STC/PMA Pending
- Minimal reduction in output overtime due to thermal overload

**MODEL:**  
**P36DUO**

**PART #**  
**01-0772131-00**

**DESCRIPTION:**  
Parmetheus™ **DUO** Par 36  
LED LANDING & TAXI • **14-28VDC**

**CANDLE POWER:**  
LANDING: **125,084** • TAXI: **25,204**

**AMPS/VOLTS:**  
**2.6 Amps @ 14 VDC**

PARMETHEUS™ **DUO**  
LANDING

PARMETHEUS™ **DUO**  
TAXI



PAR  
36

LED  
LIGHTS

**BULB CHART**

GE BULB	DUO
4416	P36DUO
4505	P36DUO
4509	P36DUO
4587	P36DUO
4591	P36DUO
4593	P36DUO
4594	P36DUO
4595	P36DUO
4596	P36DUO
4623	P36DUO
4626	P36DUO
4627	P36DUO
Q4631	P36DUO
Q4632	P36DUO



**WARNING:** This product may contain chemicals known to the State of California to cause cancer and birth defects or other reproductive harm. For more information, visit flywat.com/regulatory.

**PART 27 TOP PRODUCTS**  
2022 REV A



**WARNING:** This product may contain chemicals known to the State of California to cause cancer and birth defects or other reproductive harm. For more information, visit flywat.com/regulatory.

**PART 27 TOP PRODUCTS**  
2022 REV A

# PARMETHEUS™ PLUS

## PAR 36 PAR 46 LED TAXI & LANDING

**5** YEAR WARRANTY

- Optical spot and flood combinations via **WAT's TIR™** (Total Internal Reflector) technology
- "Drop-In" design offers easy installation and maintenance
- Power wiring attaches to brass screw terminals
- Weight is virtually identical to previous lamps
- Assembly design includes clocking notch

**Replacement Outer Lens:** (PAR 36) Part # 68-3971486A30 • (PAR 46) Part # 68-3971577A30

**Approvals:** FAA/ PMA/STC Approved

MODEL	PART #	DESCRIPTION	CANDLE POWER	AMPS/VOLTS
P36P1L	01-0771833-10	PAR 36 LANDING • 14V	60,000	1.36 Amps @ 14 VDC
P36P1T	01-0771833-15	PAR 36 TAXI • 14V	15,000	1.36 Amps @ 14 VDC
P36P2L	01-0771833-20	PAR 36 LANDING • 28V	60,000	0.68 Amps @ 28 VDC
P36P2T	01-0771833-25	PAR 36 TAXI • 28V	15,000	0.68 Amps @ 28 VDC
P46P1L	01-0790750-10	PAR 46 LANDING • 14V	105,000	2.6 Amps @ 14 VDC
P46P2L	01-0790750-20	PAR 46 LANDING • 28V	105,000	1.3 Amps @ 28 VDC



PARMETHEUS PLUS LED LANDING



PARMETHEUS PLUS LED TAXI



PARMETHEUS PLUS LED LANDING



**DISCONTINUED**

**Obsolete:** As of August 1, 2022 Pametheus™ Plus PAR-46 product will no longer be manufactured. Please see replacement product Pametheus™G3.

**BULB CHART**

GE BULB	PLUS
4416	P36P1L
4505	P36P2L
4509	P36P1L
4587	P36P2T
4591	P36P2L
4593	P36P2T
4594	P36P2L
4595	P36P1L
4596	P36P2L
4623	P36P2T
4626	P36P2T
4627	P36P2T
Q4631	P36P1L
Q4632	P36P1L
4413	P46P1L
4313	P361T
4421	P46P1L
4435	P46P1L
4522	P46P1L
4537	P46P1L
4551	P46P2L
4553	P46P2L
4554	P46P2L
Q4554	P46P2L
Q4566	P46P2L
4570	P46P2L
4571	P46P2L

# 71554 SERIES



WWW.FLYWAT.COM

## 71554 SERIES



0.14 lbs. (64gm)



L: 2.07" (53mm) W: 1.59" (40mm)  
H: 1.40" (36mm)



14VDC: 0.26 Amps  
28VDC: 0.13 Amps

Approvals: STC/TSO/ETSO-C30c Type III

MODEL	PART #	DESCRIPTION
7155401	01-0771554-01	<b>White:</b> Tail Position Light Horizontal Mount • 28 VDC
7155402	01-0771554-02	<b>White:</b> Tail Position Light Vertical Mount • 28 VDC
7155403	01-0771554-03	<b>White:</b> Tail Position Light Vertical Mount • 28 VDC
7155411	01-0771554-11	<b>White:</b> Tail Position Light Horizontal Mount • 14 VDC
7155412	01-0771554-12	<b>White:</b> Tail Position Light Vertical Mount • 14 VDC

# 71379 SERIES

## 71379 SERIES



0.23 lbs. (104gm)



L: 1.75" (45mm) W: 1.25" (32mm)  
H: 2.31" (58.67mm)



14VDC: 0.25 Amps  
28VDC: 0.25 Amps

Approvals: TSO-C30c Type I-II

MODEL	PART #	DESCRIPTION
7137911	01-0771379-11	<b>Green:</b> Forward Position Light • 14 VDC
7137912	01-0771379-12	<b>Red:</b> TForward Position Light • 14 VDC
7137901	01-0771379-01	<b>Green:</b> Forward Position Light • 28 VDC
7137902	01-0771379-02	<b>Red:</b> Forward Position Light • 28 VDC

# 71105 SERIES

WWW.FLYWAT.COM



## 71105 SERIES



0.2 lbs. (91gm) @ 14VDC  
0.25 lbs. (113gm) @ 28VDC



L: 3.88" (99mm) W: 1.08" (27mm)  
H: 1.77" (45mm)



14VDC: 0.25 Amps  
28VDC: 0.25 Amps

Approvals: TSO-C30c Type I-II / FTSO-C30c Type I

MODEL	PART #	DESCRIPTION
7110501	01-0771105-01	<b>Green:</b> Position Light • 14 VDC
7110502	01-0771105-02	<b>Red:</b> Position Light • 14 VDC
7110503	01-0771105-03	<b>Green:</b> Position Light • 28 VDC
7110504	01-0771105-04	<b>Red:</b> Position Light • 28 VDC



71080 Series Beacons are TSO approved self-contained **Red** LED Anti-Collision lights (Ref. Class I - 150 effective candlepower). They are designed to replace a range of legacy products from our A470A remote strobe heads to the HRCFA self-contained strobe assemblies.

## 71080 SERIES



Model A440 Mounting Adapter used for fuselage mounting



**0.88 lbs.** (399gm)



**L: 7.04"** (179mm) **W: 2.63"** (67mm)  
**H: 2.02"** (51.5mm)



**28VDC:** Position Lights 0.23 Amps  
Anti-Collision Light 0.73 Amps Avg.

Replacement Lens: Part # 68-3990574A30 (Field replaceable)

Approvals: STC/TSO-C96a Class I

MODEL	PART #	DESCRIPTION
7108051	01-0771080-51	<b>Aviation Red</b> • Upper • <b>14 VDC</b> Base Diameter: <b>2.6"</b> (66mm)
7108055	01-0771080-55	<b>Aviation Red</b> • Upper • <b>14 VDC</b> Base Diameter: <b>3.67"</b> (93mm)
7108001	01-0771080-01	<b>Aviation Red</b> • Upper • <b>28 VDC</b> Base Diameter: <b>2.6"</b> (66mm)
7108004	01-0771080-04	<b>Aviation Red</b> • Upper • <b>28 VDC</b> Base Diameter: <b>5.14"</b> (130mm)
7108014	01-0771080-14	<b>Aviation Red</b> • Lower • <b>28 VDC</b> Base Diameter: <b>5.14"</b> (130mm)
7108005	01-0771080-05	<b>Aviation Red</b> • Upper • <b>28 VDC</b> Base Diameter: <b>3.67"</b> (93mm)
7108015	01-0771080-15	<b>Aviation Red</b> • Lower • <b>28 VDC</b> Base Diameter: <b>3.67"</b> (93mm)
7108007	01-0771080-07	<b>Aviation Red</b> • Upper • <b>28 VDC</b> Base Diameter: <b>3.67"</b> (93mm)
7108017	01-0771080-17	<b>Aviation Red</b> • Lower • <b>28 VDC</b> Base Diameter: <b>3.67"</b> (93mm)
7108008	01-0771080-08	<b>Aviation Red</b> • Upper • <b>28 VDC</b> Base Diameter: <b>5.14"</b> (130mm)
7108018	01-0771080-18	<b>Aviation Red</b> • Lower • <b>28 VDC</b> Base Diameter: <b>5.14"</b> (130mm)

## 71125 SERIES



**0.2 lbs.** (91gm) • **14V**  
**0.25 lbs.** (113gm) • **28V**



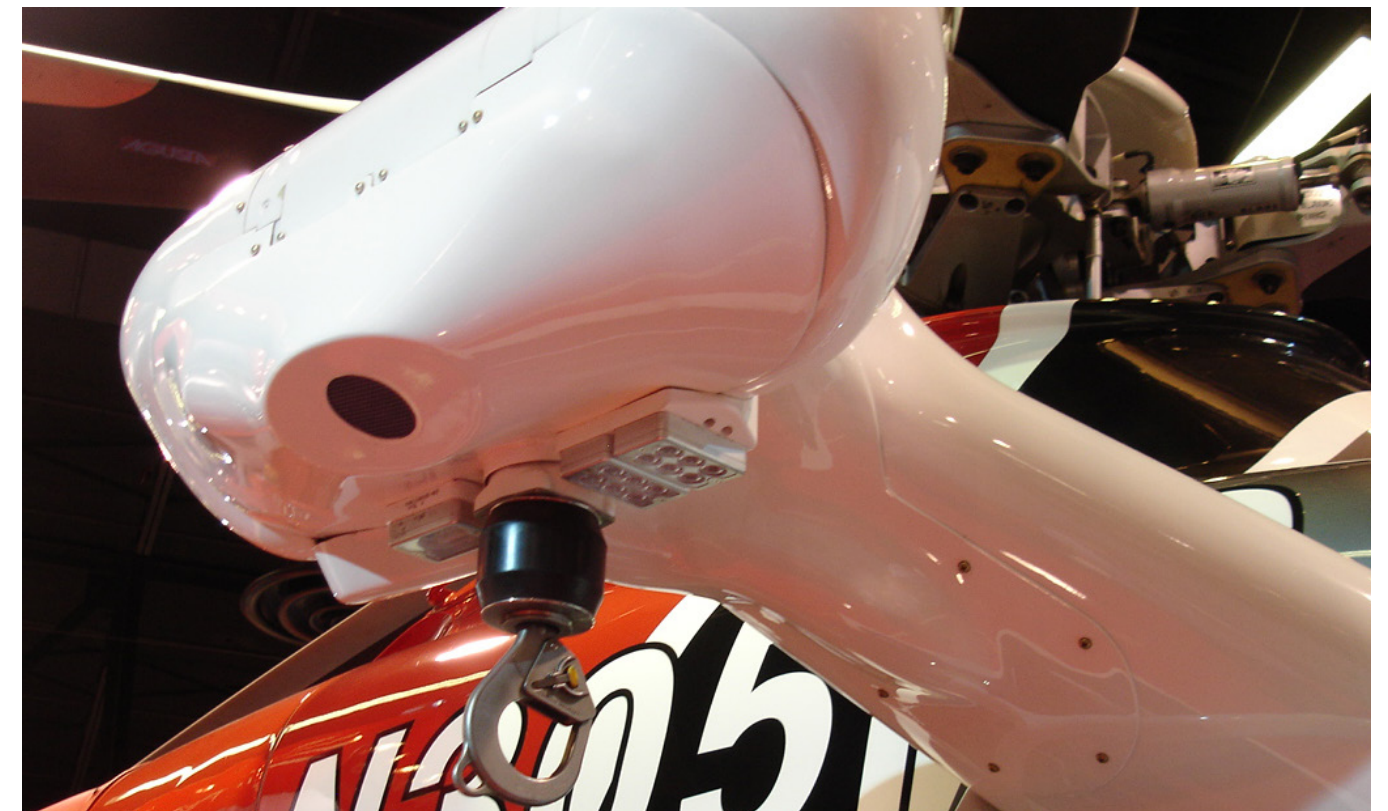
**L: 3.88"** (99mm) **W: 1.77"** (45mm)  
**H: 1.08"** (27mm)



**14V:** 0.9 Amps  
**28V:** 0.45 Amps

Approvals: None

MODEL	PART #	DESCRIPTION
7112510	01-0771125-10	LED Light: 2"x3" • <b>14V</b> • <b>10°</b>
7112511	01-0771125-11	LED Light: 2"x3" • <b>14V</b> • <b>20°</b>
7112512	01-0771125-12	LED Light: 2"x3" • <b>14V</b> • <b>90°</b>
7112520	01-0771125-20	LED Light: 2"x3" • <b>28V</b> • <b>10°</b>
7112521	01-0771125-21	LED Light: 2"x3" • <b>28V</b> • <b>20°</b>
7112522	01-0771125-22	LED Light: 2"x3" • <b>28V</b> • <b>90°</b>



## SELF CONTAINED LED POSITION & ANTI-COLLISION LIGHTHEADS

### ORION™ 660



**0.30 lbs.** (136gm)



**L: 3.95"** (100mm) **W: 1.68"** (43mm)  
**H: 1.79"** (45mm)



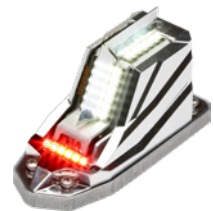
**14VDC:** Position Light 0.20 Amps  
Anti-Collision Light 0.56 Amps Avg.  
**28VDC:** Position Lights 0.17 Amps  
Anti-Collision Light 0.24 Amps Avg.

Replacement Lens: Right: **(Green)** Assembly: Part # 01-0251094-01

Left: **(Red)** Assembly: Part # 01-0251094-00 Approvals: TSO-C96a • TSO-C30c Types I - III

MODEL	PART #	DESCRIPTION
OR6601G	01-0790877-01	<b>Green:</b> Forward POS & White Tail POS Light ACL Wingtip Assembly • <b>14 VDC</b>
OR6601R	01-0790877-02	<b>Red:</b> Forward POS & White Tail POS Light ACL Wingtip Assembly • <b>14 VDC</b>
OR6602G	01-0790877-11	<b>Green:</b> Forward POS & White Tail POS Light ACL Wingtip Assembly • <b>28 VDC</b>
OR6602R	01-0790877-12	<b>Red:</b> Forward POS & White Tail POS Light ACL Wingtip Assembly • <b>28 VDC</b>

### ORION™ 650E



**0.26 lbs.** (118gm)



**L: 3.85"** (98mm) **W: 1.67"** (42mm)  
**H: 2.20"** (56mm)



**14VDC:** Position Light 0.30 Amps  
Anti-Collision Light 0.70 Amps Avg.  
**28VDC:** Position Lights 0.15 Amps  
Anti-Collision Light 0.35 Amps Avg.

**Note:** This unit is designed to be installed under wingtip lens

Approvals: STC/TSO/ETSO-C96a Class II • TSO/ETSO-C30c Types I - II

MODEL	PART #	DESCRIPTION
OR6501GE	01-0790701-01	<b>Green:</b> POS Light/ACL Wingtip Assembly • <b>14 VDC</b>
OR6501RE	01-0790701-02	<b>Red:</b> POS Light/ACL Wingtip Assembly • <b>14 VDC</b>
OR6502GE	01-0790701-11	<b>Green:</b> POS Light/ACL Wingtip Assembly • <b>28 VDC</b>
OR6502RE	01-0790701-12	<b>Red:</b> POS Light/ACL Wingtip Assembly • <b>28 VDC</b>

### ORION™ 650



**0.30 lbs.** (136gm)



**L: 3.95"** (100mm) **W: 1.68"** (43mm)  
**H: 1.79"** (45mm)



**14VDC:** Position Light 0.20 Amps  
Anti-Collision Light 0.56 Amps Avg.  
**28VDC:** Position Lights 0.17 Amps  
Anti-Collision Light 0.24 Amps Avg.

Replacement Lens: Right: **(Green)** Assembly: Part # 01-0251094-01

Left: **(Red)** Assembly: Part # 01-0251094-00 Approvals: TSO-C96a • TSO-C30c Types I - III • E-TSO

MODEL	PART #	DESCRIPTION
OR6501G	01-0790725-01	<b>Green:</b> POS Light/ACL Wingtip Assembly • <b>14 VDC</b>
OR6501R	01-0790725-02	<b>Red:</b> POS Light/ACL Wingtip Assembly • <b>14 VDC</b>
OR6502G	01-0790725-11	<b>Green:</b> POS Light/ACL Wingtip Assembly • <b>28 VDC</b>
OR6502R	01-0790725-12	<b>Red:</b> POS Light/ACL Wingtip Assembly • <b>28 VDC</b>

### ORION™ 600



**0.5 lbs.** (227gm)



**L: 5.65"** (144mm) **W: 1.78"** (45mm)  
**H: 2.04"** (52mm)



**14VDC:** Position Light 0.48 Amps  
Anti-Collision Light 1.0 Amps Avg.  
**28VDC:** Position Lights 0.17 Amps  
Anti-Collision Light 0.5 Amps Avg.

Replacement Lens: 02-0371773-300 (Same lens used for both left & right)

Approvals: TSO-C96a • TSO-C30c Types I - III • E-TSO

MODEL	PART #	DESCRIPTION
OR6001G	01-0771733-01	<b>Green:</b> Forward POS Light & White Tail POS Light ACL Wingtip Assembly • <b>14 VDC</b>
OR6001R	01-0771733-02	<b>Red:</b> Forward POS Light & White Tail POS Light ACL Wingtip Assembly • <b>14 VDC</b>
OR6002G	01-0771733-11	<b>Green:</b> Forward POS Light & White Tail POS Light ACL Wingtip Assembly • <b>28 VDC</b>
OR6002R	01-0771733-12	<b>Red:</b> Forward POS Light & White Tail POS Light ACL Wingtip Assembly • <b>28 VDC</b>

### ORION™ 550



**0.20 lbs.** (91gm)



**L: 1.87"** (47mm) **W: 1.75"** (44mm)  
**H: 2.17"** (55mm)



**14VDC:** Position Lights 0.20 Amps  
Anti-Collision Light 0.72 Amps Avg.

Replacement Lens: Part # 68-3951061A31  
Approvals: TSO-C96a Class II • TSO-C30c Type III

MODEL	PART #	DESCRIPTION
OR5501V	01-0772070V01	<b>White:</b> Tail POS/ACL Assembly • <b>14 VDC</b>

### ORION™ 500



**0.29 lbs.** (132gm)



**L 3.72"** (94mm) **W 1.67"** (42mm)  
**H 2.20"** (56mm)



**14VDC:** Position Light 0.30 Amps  
Anti-Collision Light 0.70 Amps Avg.  
**28VDC:** Position Lights 0.15 Amps  
Anti-Collision Light 0.35 Amps Avg.

Replacement Lens: Part # 68-3951061A31  
Approvals: STC/TSO/ETSO-C96a Class II • TSO/ETSO-C30c Type III

MODEL	PART #	DESCRIPTION
OR5001V	01-0771774V01	<b>White:</b> Tail POS/ACL Assembly • <b>14 VDC</b>
OR5002V	01-0771774V02	<b>White:</b> Tail POS/ACL Assembly • <b>28 VDC</b>

The CHROMA Series LED Plug N Play Position Lamps meet all FAA requirements for Chromaticity, Intensity, and Coverage FAR Part 23.1383 the 23.1397 FAR Part 27.1383 - 27.1397 when installing using existing **Red** or **Green** lenses. This allows for maintaining the original "approved" configuration of the light assembly in which they are installed. Robust machined base provides vibration resistance tested in accordance with RTCA/DO160 CAT U2, Curves F, F1 for rotor craft. These bulbs are FAA/TSO and STC approved for fixed wing and rotor craft applications.

### CHROMA™ LED

PLUG N PLAY POSITION LAMPS



**0.625 lbs.** (28.35gm)



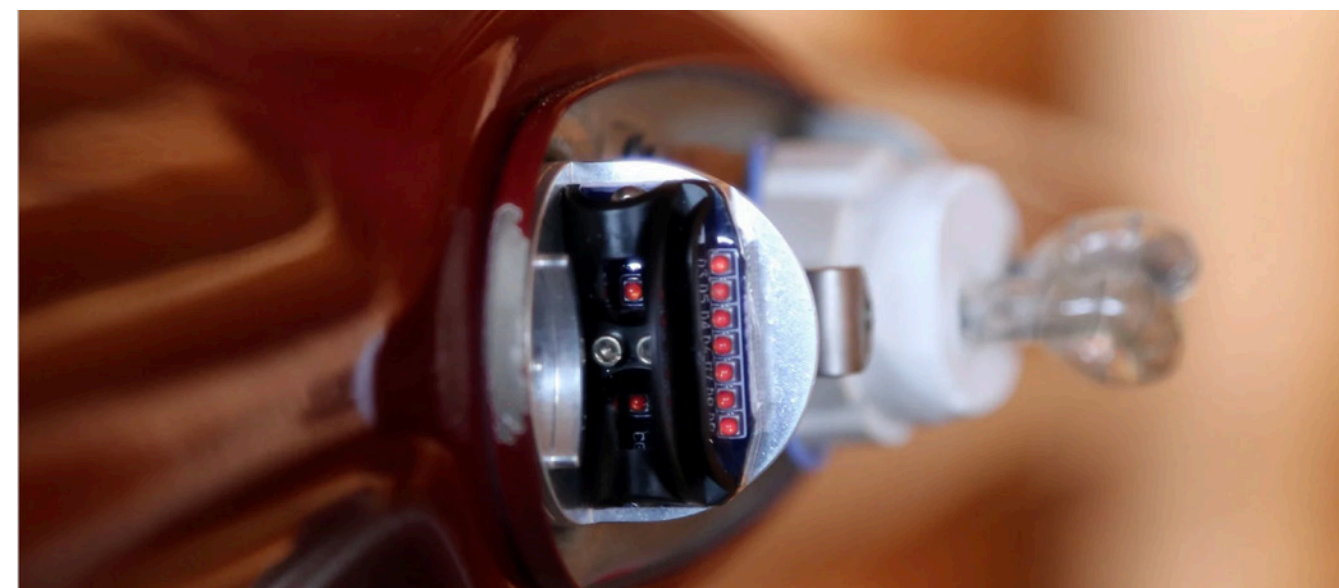
**W: 1.23"** (31mm) **H: 2.05"** (52mm)



**14VDC:** 0.30 Amps  
**28VDC:** 0.15 Amps

Approvals: STC/TSO

MODEL	PART #	DESCRIPTION
<b>CHROMA2G</b>	<b>01-0771900G14</b>	<b>Green:</b> Chroma Position LED Lamp • <b>14 VDC</b>
<b>CHROMA2R</b>	<b>01-0771900R14</b>	<b>Red:</b> Chroma Position LED Lamp • <b>14 VDC</b>
<b>CHROMA1G</b>	<b>01-0771900G28</b>	<b>Green:</b> Chroma Position LED Lamp • <b>28 VDC</b>
<b>CHROMA1R</b>	<b>01-0771900R28</b>	<b>Red:</b> Chroma Position LED Lamp • <b>28 VDC</b>





- Produces 3 - 15 times more light, engineered specially for each model aircraft
- Reduces electrical load and heat output
- 5 year/ 5,000hr warranty, proven system based on time-tested components
- Increased Reliability
- Increases safety, see and be seen
- More closely approximates the color temperature of Natural Daylight
- Thousands of installations worldwide
- Global Dealer Network



KIT #	AIRCRAFT MODELS	DESCRIPTION
<b>LSM-500-052</b>	<b>Airbus</b> AS350B, AS350B1, AS350B2, AS350B3, AS350BA, AS350C, AS350D, AS350D1, EC130B4, EC130T2	Nose Mounted Landing / Taxi Lights
<b>LSM-500-053</b>	<b>Bell</b> 206A, 206B, 206B-3, 206L, 206L-1, 206L-3, 206L-4	Nose Mounted Landing / Taxi Lights
<b>LSM-500-133</b>	<b>Agusta</b> AB139, AW139	Landing Light Installation Kit Pending STC Approval
<b>LSM-500-132</b>	<b>Robinson</b> R22, R22 ALPHA, R22 BETA, R22 MARINER, R44, R44II, R66	Nose Mounted Landing / Taxi Lights



71485 is a combination **Aviation Red** visible and IR flashing beacon. Produced as a derivative of our Models 71080 & 90520, there is no TSO available for this product. 71485 can be surface mounted in an area as small as 2.75 or has an adapter to drop into a 3.75 recessed mount commonly found. Nominal IR LEDs at 875nm. unit ships with 18 flying leads, independent control for **Red** and IR LED packages. Surface mount unit and additional models are not listed, contact factory.

## 71485 SERIES



- 0.67 lbs.** (304gm/375gm with adapter)
- W: 1.23"** (31mm) **H: 2.05"** (52mm)
- 14VDC:** 0.30 Amps  
**28VDC:** 0.15 Amps

Approvals: None

MODEL	PART #	DESCRIPTION
<b>7148500</b>	<b>01-0771485-00</b>	<b>Red &amp; IR:</b> LED
<b>7148501</b>	<b>01-0771485-01</b>	<b>Red &amp; IR:</b> LED

Model 70513 Series is an IR Emitter used to identify aircraft or vehicles in the non visible light spectrum. A good choice when viewing objects with Video or light amplification devices. Models available in a choice of 30 or 2 hertz. Assembly ships with a set of 36" flying leads.

## 70513 SERIES



- 0.22 lbs.** (91gm)
- H: 1.4"** (36mm)
- 14VDC:** 0.30 Amps  
**28VDC:** 0.15 Amps

Approvals: None

MODEL	PART #	DESCRIPTION
<b>7051300</b>	<b>01-0770513-00</b>	<b>IR:</b> LED @ 30hz • <b>28 VDC</b>
<b>7051302</b>	<b>01-0770513-02</b>	<b>IR:</b> LED @ 2hz • <b>28 VDC</b>

## 71144 SERIES



0.46 lbs. (209gm)



L: x 16" (406mm)



28VDC: 0.06 Amps

MODEL	PART #	DESCRIPTION
7114416	01-0771144-16	Gooseneck LED Light Assembly

## 70820 SERIES



0.19 lbs. (86gm)



Base: 1.13" (28.7mm)  
Swivel: 1.34" (34mm) x 2.66" (67.56mm)



14VDC: 0.02 Amps  
28VDC: 0.02 Amps

MODEL	PART #	DESCRIPTION
7082000	01-0770820-00	White: LED, Natural Aluminum Finish • 14 VDC
7082002	01-0770820-02	White: LED, Black Anodized Finish • 14 VDC
7082004	01-0770820-04	Red: LED, Black Anodized Finish • 14 VDC
7082001	01-0770820-01	White: LED, Natural Aluminum Finish • 28 VDC
C7082003	01-0770820-03	White: LED, Black Anodized Finish • 28 VDC
7082005	01-0770820-05	Red: LED, Black Anodized Finish • 28 VDC

## 70813 SERIES



0.1 lbs. (45gm)



L: 4" (101mm) W: 2.75" (70mm)  
H: .25" (6mm)



14VDC: 0.08 Amps  
28VDC: 0.16 / 0.24 Amps

MODEL	PART #	DESCRIPTION
7081304	01-0770813-04	LED Dome Light • 28 VDC
7081307	01-0770813-07	LED Dome Light • 14 VDC
7081308	01-0770813-08	LED Dome Light 8 • 2 VDC
7081312	01-0770813-12	LED Dome Light • 28 VDC

## 295SLSA1



3 lbs. (1361gm)



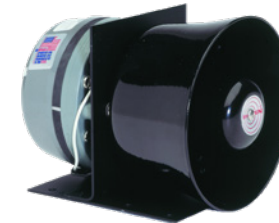
L: 7" (179mm) W: 6" (152mm)  
H: 2.5" (64mm)



14VDC / 28VDC

MODEL	PART #	DESCRIPTION
295SLSA1	01-0770879-00	8 Function 100/200 Watt Siren Amplifier • 14 VDC
295SLSE1	01-0884745-01A	8 Function 100/200 Watt Siren Amplifier • 28 VDC

## SA-340-STS



8 lbs (3629gm)



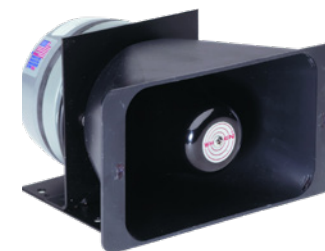
L: 6.8" (173mm) W: 5.62" (143mm)  
H: 5.62" (143mm)



14VDC / 28VDC

MODEL	PART #	DESCRIPTION
SA340STS	01-0861413-00F	100w Helicopter Siren

## SA-340-TS



9 lbs. 3 oz. (4218gm)



L: 8" (203mm) W: 7" (179mm)  
H: 5.25" (133mm)



14VDC / 28VDC

MODEL	PART #	DESCRIPTION
295SLSA1	01-0881013-00G	8 Function 100/200 Watt Siren Amplifier



**WHELEN** AEROSPACE TECHNOLOGIES

**[WWW.FLYWAT.COM](http://WWW.FLYWAT.COM)**

WHELEN AEROSPACE TECHNOLOGIES, LLC.  
210 AIRPORT DRIVE EAST • SEBASTIAN, FL 32958

☎ **1-772-562-4757** ✉ **[INFO@FLYWAT.COM](mailto:INFO@FLYWAT.COM)**