



WHELEN AEROSPACE TECHNOLOGIES

TOP PRODUCTS | PART 23



LED LIGHTING • HID LIGHTING • MODS

WWW.FLYWAT.COM

PARMETHEUS™ G3

5 YEAR WARRANTY

PAR 36 PAR 46 LED TAXI & LANDING

2.5 TIMES BRIGHTER THAN THE PARMETHEUS™ PLUS

MODEL	PART #	DESCRIPTION	CANDLE POWER	AMPS/VOLTS
P36G3L	01-0772102-10	PARMETHEUS™ G3 PAR 36 LANDING • 14V-28V	136,273	3.8 Amps @ 14 VDC 1.9 Amps @ 28 VDC
P36G3T	01-0772102-15	PARMETHEUS™ G3 PAR 36 TAXI • 14V-28V	35,000	3.8 Amps @ 14 VDC 1.9 Amps @ 28 VDC
P46G3L	01-0790906-00	PARMETHEUS™ G3 PAR 46 LANDING • 14V-28V	228,044	6.0 Amps @ 14 VDC 2.7 Amps @ 28 VDC

- Industry-Leading Performance
- Minimal reduction in output over time due to thermal overload
- Variable voltage 14-28 VDC
- RTCA DO-160 Environmental Tested
- Now with a sealed lens
- STC&PMA Approved



PARMETHEUS G3 LED LANDING



PARMETHEUS G3 LED TAXI



PARMETHEUS G3 LED LANDING



BULB CHART

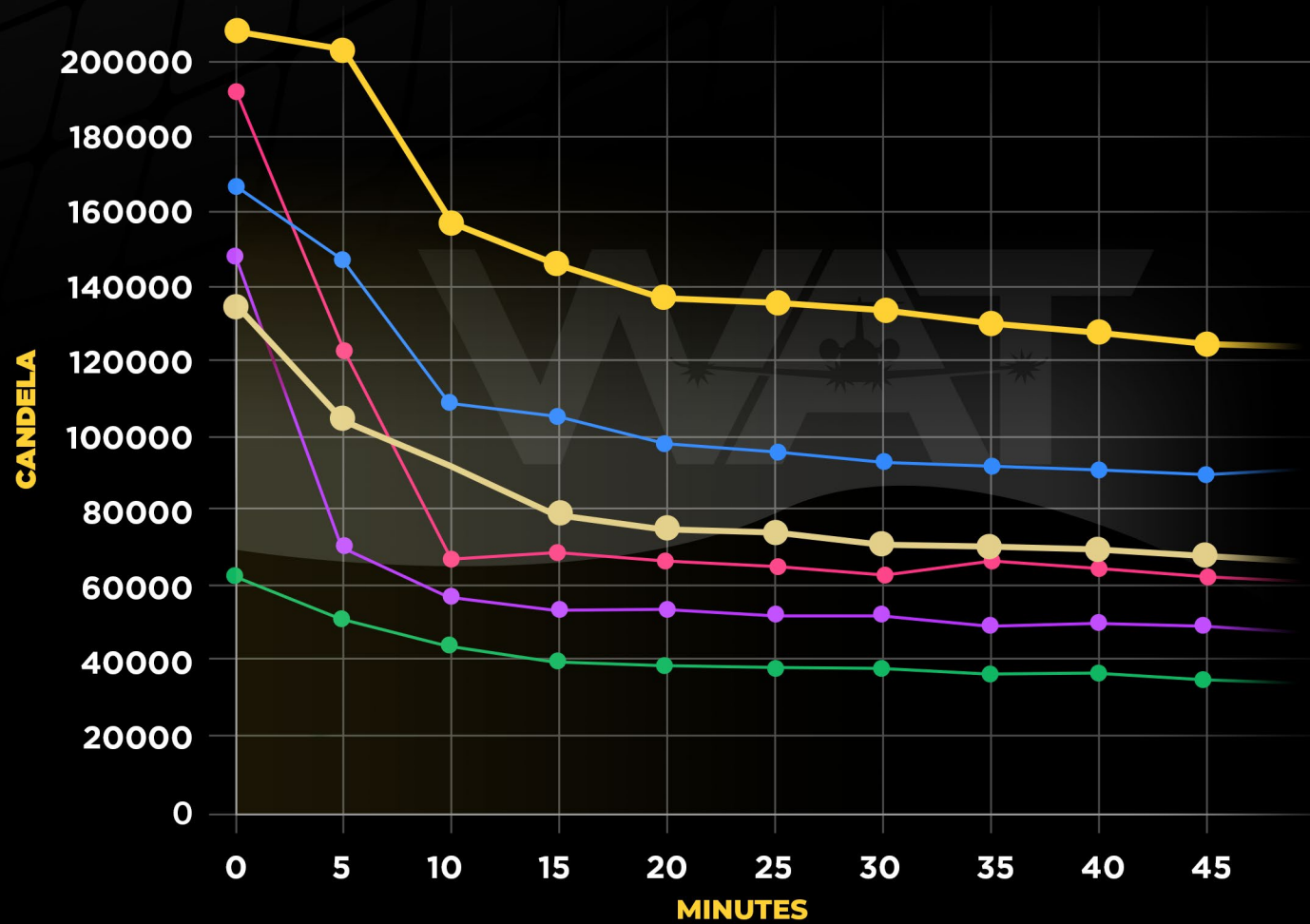
GE BULB	G3
4416	P36G3L
4505	P36G3L
4509	P36G3L
4587	P36G3T
4591	P36G3L
4593	P36G3L
4594	P36G3L
4595	P36G3L
4596	P36G3L
4623	P36G3T
4626	P36G3L
4627	P36G3L
Q4631	P36G3L
Q4632	P36G3L
4413	P46G3L
4313	P36G3L
4421	P46G3L
4435	P46G3L
4522	P46G3L
4537	P46G3L
4551	P46G3L
4553	P46G3L
4554	P46G3L
4580	P46G3L
4581	P46G3L
Q4554	P46G3L
Q4566	P46G3L
4570	P46G3L
4571	P46G3L

— PARMETHEUS™ G3

PAR
36

PAR
46

Whelen Aerospace Technologies is proud to announce the newest member of the Parmetheus™ product family, the Parmetheus™ G3. Keeping the tradition of industry leading performance and value, the new G3 Series is 2.5 times brighter than the Parmetheus™ Plus all while maintaining the same form, fit and functionality of a drop-in LED replacement for legacy landing lights. Available in PAR-36, and PAR-46 size, the G3 is now available in variable voltage 14-28 VDC.



CANDELA
OUTPUT OVER TIME

WAT
Parmetheus™ G3
Par 46

SUNSPOT
Par 46
2130-LX

SUNSPOT
Par 46
2230-4580

WAT
Parmetheus™ G3
Par 36

SUNSPOT
36 LX/HX

SUNSPOT
36-4000



PAR 36
WAT
Whelen Aerospace Technologies

SUNSPOT
36-4596

PAR 46
WAT
Whelen Aerospace Technologies

SUNSPOT
46-4580

PARMETHEUS™ PLUS

PAR 36 PAR 46 LED TAXI & LANDING

5 YEAR WARRANTY

- Optical spot and flood combinations via **WAT's TIR™** (Total Internal Reflector) technology
- "Drop-In" design offers easy installation and maintenance
- Power wiring attaches to brass screw terminals
- Weight is virtually identical to previous lamps
- Assembly design includes clocking notch

Replacement Outer Lens: (PAR 36) Part # 68-3971486A30 • (PAR 46) Part # 68-3971577A30

Approvals: FAA PMA/STC Approved

MODEL	PART #	DESCRIPTION	CANDLE POWER	AMPS/VOLTS
P36P1L	01-0771833-10	PAR 36 LANDING • 14V	60,000	1.36 Amps @ 14 VDC
P36P1T	01-0771833-15	PAR 36 TAXI • 14V	15,000	1.36 Amps @ 14 VDC
P36P2L	01-0771833-20	PAR 36 LANDING • 28V	60,000	0.68 Amps @ 28 VDC
P36P2T	01-0771833-25	PAR 36 TAXI • 28V	15,000	0.68 Amps @ 28 VDC
P46P1L	01-0790750-10	PAR 46 LANDING • 14V	105,000	2.6 Amps @ 14 VDC
P46P2L	01-0790750-20	PAR 46 LANDING • 28V	105,000	1.3 Amps @ 28 VDC



PARMETHEUS PLUS LED LANDING



PARMETHEUS PLUS LED TAXI



PARMETHEUS PLUS LED LANDING



DISCONTINUED

Obsolete: As of August 1, 2022 Pametheus™ Plus PAR-46 product will no longer be manufactured. Please see replacement product Pametheus™G3.

BULB CHART

GE BULB	PLUS
4416	P36P1L
4505	P36P2L
4509	P36P1L
4587	P36P2T
4591	P36P2L
4593	P36P2T
4594	P36P2L
4595	P36P1L
4596	P36P2L
4623	P36P2T
4626	P36P2T
4627	P36P2T
Q4631	P36P1L
Q4632	P36P1L
4413	P46P1L
4313	P361T
4421	P46P1L
4435	P46P1L
4522	P46P1L
4537	P46P1L
4551	P46P2L
4553	P46P2L
4554	P46P2L
Q4554	P46P2L
Q4566	P46P2L
4570	P46P2L
4571	P46P2L

71888/71898/71958 RECOGNITION LIGHT ASSEMBLIES



0.25 lbs. (113.5gm)



L: 3.16" (80mm) **W: 1.47"** (37mm)
H: 1.65" (42mm)



14VDC: 0.60 Amps
28VDC: 0.30 Amps

Candela: 30,000

LED Form • Fit • Function replacement to A775 & A775EXP series.

MODEL	PART #	DESCRIPTION
7195800	01-0771958-00	LED Recog, • 14V Piper Molex connector OEM Part # 475-346
7195801	01-0771958-01	LED Recog, • 28V Piper Molex connector OEM Part # 475-347
7188800	01-0771888-00	LED Recog, • 14V Standard Catalog Item
7188801	01-0771888-01	LED Recog, • 28V Standard Catalog Item
7189800	01-0771898-00	LED Recog, • 28V Beech
71898PO	01-0771898-PO	LED Recog, • 28V Beech Painted
7189801	01-0771898-01	LED Recog, • 28V Beech • Approvals: PMA Textron Part # 130-381001-003



0.3 lbs. (136gm)



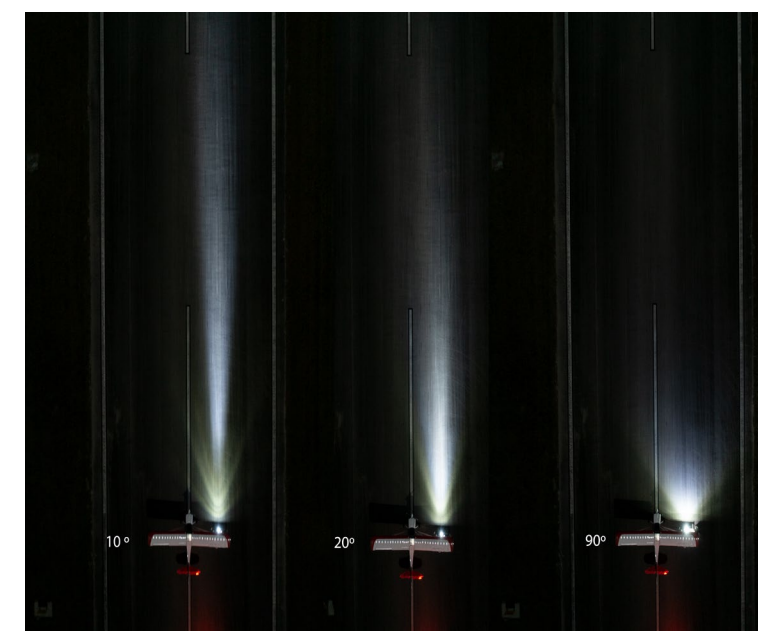
L: 1.25" (32mm) **W: 3.25"** (83mm)
H: 1.95" (50mm)



14V: 0.9 Amps
28V: 0.45 Amps

Approvals: None

MODEL	PART #	DESCRIPTION
7112510	01-0771125-10	LED Light: 2"x3" • 14V • 10°
7112511	01-0771125-11	LED Light: 2"x3" • 14V • 20°
7112512	01-0771125-12	LED Light: 2"x3" • 14V • 90°
7112520	01-0771125-20	LED Light: 2"x3" • 28V • 10°
7112521	01-0771125-21	LED Light: 2"x3" • 28V • 20°
7112522	01-0771125-22	LED Light: 2"x3" • 28V • 90°
7112523	01-0771125-23	LED Light: 2"x3" • 28V • 30° (Vertical)
RECLENS	01-0418045-00	Kit Lens: 20/30/90 Deg Optics for 7112510 & 20



SELF CONTAINED LED POSITION & ANTI-COLLISION LIGHTHEADS

All LED self-contained wingtip and tail mounted Position (POS) & Anti-Collision (ACL) system. Eliminates the need for external power supplies, reduces current draw and provides thousands of hours of operation. Where applicable, all Orion products are provided with a field replaceable, hard coated polycarbonate lens.

ORION™ 650



Orion 650 400 Effective



0.30 lbs. (136gm)



L: 3.95" (100mm) **W: 1.68"** (43mm)
H: 1.79" (45mm)



14VDC: Position Light 0.20 Amps
Anti-Collision Light 0.56 Amps Avg.
28VDC: Position Lights 0.17 Amps
Anti-Collision Light 0.24 Amps Avg.

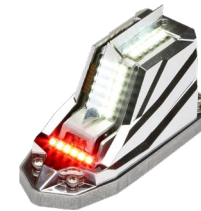
Replacement Lens: Right: (Green) Assembly: Part # 01-0251094-01
Left: (Red) Assembly: Part # 01-0251094-00

Approvals: STC/TSO/ETSO-C96a Class III • TSO-C30c Types I - II

MODEL	PART #	DESCRIPTION
OR6501G	01-0790725-01	Green: POS Light/ACL Wingtip Assembly • 14 VDC
OR6501R	01-0790725-02	Red: POS Light/ACL Wingtip Assembly • 14 VDC
OR6502G	01-0790725-11	Green: POS Light/ACL Wingtip Assembly • 28 VDC
OR6502R	01-0790725-12	Red: POS Light/ACL Wingtip Assembly • 28 VDC
OR6502G4	01-0790725-15	Green: POS Light/ACL Wingtip Assembly • 28 VDC 400 Effective
OR6502R4	01-0790725-16	Red: POS Light/ACL Wingtip Assembly • 28 VDC 400 Effective



ORION™ 650E



0.26 lbs. (118gm)



L: 3.85" (98mm) **W: 1.67"** (42mm)
H: 2.20" (56mm)



14VDC: Position Light 0.30 Amps
Anti-Collision Light 0.70 Amps Avg.
28VDC: Position Lights 0.15 Amps
Anti-Collision Light 0.35 Amps Avg.

Note: This unit is designed to be installed under wingtip lens

Approvals: STC/TSO/ETSO-C96a Class II TSO/ETSO-C30c Types I - II

MODEL	PART #	DESCRIPTION
OR6501GE	01-0790701-01	Green: POS Light/ACL Wingtip Assembly • 14 VDC
OR6501RE	01-0790701-02	Red: POS Light/ACL Wingtip Assembly • 14 VDC
OR6502GE	01-0790701-11	Green: POS Light/ACL Wingtip Assembly • 28 VDC
OR6502RE	01-0790701-12	Red: POS Light/ACL Wingtip Assembly • 28 VDC

ORION™ 660



0.30 lbs. (136gm)



L: 3.95" (100mm) **W: 1.68"** (43mm)
H: 1.79" (45mm)



14VDC: Position Light 0.20 Amps
Anti-Collision Light 0.56 Amps Avg.
28VDC: Position Lights 0.17 Amps
Anti-Collision Light 0.24 Amps Avg.

Replacement Lens: Right: (Green) Assembly: Part # 01-0251094-01
Left: (Red) Assembly: Part # 01-0251094-00

Approvals: TSO-C96a • TSO-C30c Types I - III

MODEL	PART #	DESCRIPTION
OR6601G	01-0790877-01	Green: POS Light/ACL Wingtip Assembly • 14 VDC
OR6601R	01-0790877-02	Red: POS Light/ACL Wingtip Assembly • 14 VDC
OR6602G	01-0790877-11	Green: POS Light/ACL Wingtip Assembly • 28 VDC
OR6602R	01-0790877-12	Red: POS Light/ACL Wingtip Assembly • 28 VDC

ORION™ 600



0.5 lbs. (227gm)



L: x 5.65" (144mm) W: 1.78" (45mm)
H: 2.04" (52mm)



14VDC: Position Lights 0.48 Amps
Anti-Collision Light 1.0 Amps Avg.
28VDC: Position Lights 0.17 Amps
Anti-Collision Light 0.5 Amps Avg.

Replacement Lens: Part # 02-0371773-300 (Same lens used for both left & right.)

Approvals: TSO-C96a/TSO-C30c Types I - III • E-TSO

MODEL	PART #	DESCRIPTION
OR6001G	01-0771733-01	Green: Forward POS & White Tail POS Light ACL Wingtip Assembly • 14 VDC
OR6001R	01-0771733-02	Red: Forward POS & White Tail POS Light ACL Wingtip Assembly • 14 VDC
OR6002G	01-0771733-11	Green: Forward POS & White Tail POS Light ACL Wingtip Assembly • 28 VDC
OR6002R	01-0771733-12	Red: Forward POS & White Tail POS Light ACL Wingtip Assembly • 28 VDC

ORION™ 600 - CIRRUS SPECIFIC

* CONTACT CIRRUS AIRCRAFT FOR PRICING AND AVAILABILITY.



WAT ORION PART #	CIRRUS KIT PART #	DESCRIPTION
01-0771733-23 (GREEN) 01-0771733-24 (RED)	70702-002	4-hole Mount kit with associated installation harnesses Reference Cirrus Service Bulletin #SB2X-33-09
01-0771733-25 (GREEN) 01-0771733-26 (RED)	70702-001	3-hole Mount kit with associated installation harnesses Reference Cirrus Service Bulletin #SB2X-33-08

ORION™ 550



0.20 lbs. (91gm)



L: 1.87" (47mm) W: 1.75" (44mm)
H: 2.17" (55mm)



14VDC: Position Lights 0.20 Amps
Anti-Collision Light 0.72 Amps Avg.

Replacement Lens: Part # 68-3951061A31

Approvals: TSO-C96a Class II • TSO-C30c Type III

MODEL	PART #	DESCRIPTION
OR5501V	01-0772070V01	White: Tail POS/ACL Assembly • 14 VDC

ORION™ 500



0.29 lbs. (132gm)



L 3.72" (94mm) W 1.67" (42mm)
H 2.20" (56mm)

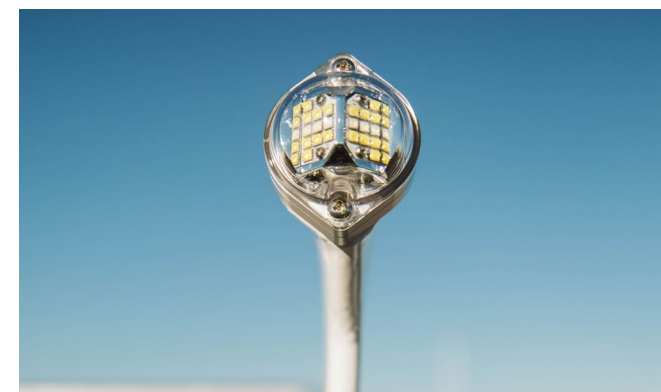


14VDC: Position Light 0.30 Amps
Anti-Collision Light 0.70 Amps Avg.
28VDC: Position Lights 0.15 Amps
Anti-Collision Light 0.35 Amps Avg.

Replacement Lens: Part # 68-3951061A31

Approvals: STC/TSO/ETSO-C96a Class II • TSO/ETSO-C30c Type III

MODEL	PART #	DESCRIPTION
OR5001V	01-0771774V01	White: Tail POS/ACL Assembly • 14 VDC
OR5002V	01-0771774V02	White: Tail POS/ACL Assembly • 28 VDC



The CHROMA Series LED Plug N Play Position Lamps meet all FAA requirements for Chromaticity, Intensity, and Coverage FAR Part 23.1383 the 23.1397 FAR Part 27.1383 - 27.1397 when installing using existing Red or Green lenses. This allows for maintaining the original "approved" configuration of the light assembly in which they are installed. Robust machined base provides vibration resistance tested in accordance with RTCA/DO160 CAT U2, Curves F, F1 for rotor craft. These bulbs are FAA/TSO and STC approved for fixed wing and rotor craft applications.

LED PLUG N PLAY POSITION LAMPS



0.0625 lbs. (28.35gm)



W: 1.23" (31mm) **H: 2.05"** (52mm)



14VDC: 0.30 Amps
28VDC: 0.15 Amps

Approvals: STC/ TSO- C30c Types I - II

MODEL	PART #	DESCRIPTION
CHROMA2G	01-0771900G14	Green: Chroma Position LED Lamp • 14 VDC
CHROMA2R	01-0771900R14	Red: Chroma Position LED Lamp • 14 VDC
CHROMA1G	01-0771900G28	Green: Chroma Position LED Lamp • 28 VDC
CHROMA1R	01-0771900R28	Red: Chroma Position LED Lamp • 28 VDC



90613 Series is a self-contained, all LED forward and aft position light with a white anti-collision light. These assemblies interconnect with standard Amp Mate-N-Lock connectors. 90613 assemblies have the same hole pattern of the original Cessna Caravan light. Units are FAA/STC Approved.



0.88 lbs. (399gm)



L: 7.04" (179mm) **W: 2.63"** (67mm)
H: 2.02" (51.5mm)



28VDC: Position Lights 0.23 Amps
Anti-Collision Light 0.73 Amps Avg.

Replacement Lens: Part # 68-3990574A30

Approvals: STC/TSO/ETSO-C96a Class II • TSO/ETSO-C30c Types I - III

MODEL	PART #	DESCRIPTION
9061391	01-0790613-91	Green: Forward POS & White Tail POS Light ACL Wingtip Assembly • 28 VDC
9061392	01-0790613-92	Red: Forward POS & White Tail POS Light ACL Wingtip Assembly • 28 VDC

71554 SERIES



0.14 lbs. (64gm)



L: 2.07" (52.5mm) **W: 1.59"** (40mm)
H: 1.40" (36mm)



14VDC: 0.26 Amps
28VDC: 0.13 Amps

Replacement Lens: Part # 68-3970991-30 • Approvals: STC / TSO/ETSO-C30c Type III

Mounting Note: Vertical mount = mtg holes at 12 & 6 o'clock • Horizontal mount = mtg holes at 9 & 3 o'clock

MODEL	PART #	DESCRIPTION
7155401	01-0771554-01	White: Tail Position Light Horizontal Mount • 28 VDC
7155402	01-0771554-02	White: Tail Position Light Vertical Mount • 28 VDC
7155411	01-0771554-11	White: Tail Position Light Horizontal Mount • 14 VDC
7155412	01-0771554-12	White: Tail Position Light Vertical Mount • 14 VDC

The ORION™ 360's are the 4th Generation LED beacons for fixed wing aircraft. These new assemblies are designed to replace legacy 2.6" and 3.75" round beacons. The ORION 360 beacons are lower profile than legacy product by 60%, are TSO C96a Class III approved, and STC'd. The beacons come in 14 and 28 VDC and in multiple color configurations, (Red/Red - White Split/White)



Narrow Base: 0.30 lbs (136gm)
Wide Base: 0.37 lbs (167gm)

14VDC: 0.53 amps average
 2.8 amps peak
28VDC: 0.26 amps average
 1.4 amps peak

Approvals: STC/TSO-C96a Class III

MODEL	PART #	DESCRIPTION
OR36R1N	01-0772010-50	Aviation Red • Upper • 14 VDC Base Diameter: 2.6" (66mm)
OR36R1W	01-0772010-52	Aviation Red • Upper • 14 VDC Base Diameter: 3.67" (93mm)
OR36S1N	01-0772010-70	Aviation Red/White • Upper • 14 VDC Base Diameter: 2.6" (66mm)
OR36S1W	01-0772010-72	Aviation Red/White • Upper • 14 VDC Base Diameter: 3.67" (93mm)
OR36R2N	01-0772010-10	Aviation Red • Upper • 28 VDC Base Diameter: 2.6" (66mm)
OR36R2W	01-0772010-12	Aviation Red • Upper • 28 VDC Base Diameter: 3.67" (93mm)
OR36R2WL	01-0772010-13	Aviation Red • Upper • 28 VDC Base Diameter: 3.67" (93mm)
OR36S2N	01-0772010-30	Aviation Red/White • Upper • 28 VDC Base Diameter: 2.6" (66mm)
OR36S2W	01-0772010-32	Aviation Red/White • Upper • 28 VDC Base Diameter: 3.67" (93mm)
OR36S2WL	01-0772010-33	Aviation Red/White • Upper • 28 VDC Base Diameter: 3.67" (93mm)
OR36W2N	01-0772010-20	Aviation Red • Upper • 28 VDC Base Diameter: 2.6" (66mm)
OR36W2W	01-0772010-22	Aviation Red • Upper • 28 VDC Base Diameter: 3.67" (93mm)
OR36W2WL	01-0772010-23	Aviation Red • Upper • 28 VDC Base Diameter: 3.67" (93mm)

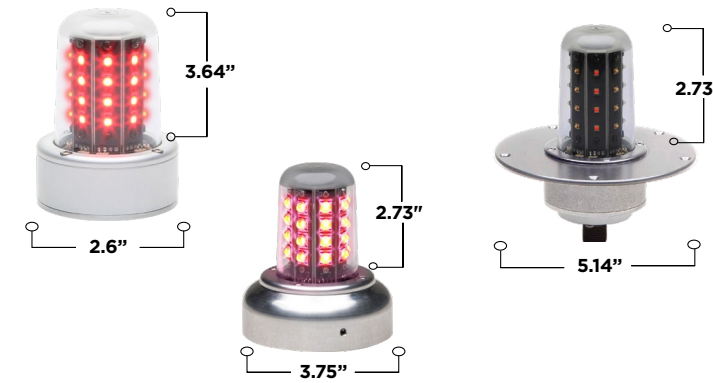


71080 SERIES

WWW.FLYWAT.COM



71080 Series Beacons are TSO approved self-contained RED LED Anti-Collision lights (Ref. Class I - 150 effective candlepower). They are designed to replace a range of legacy products from our A470A remote strobe heads to the HRCFA self-contained strobe assemblies.



0.88 lbs. (399gm)



14VDC: 0.90 AMPS @ 14VDC
28VDC: 0.45 AMPS @ 28VDC

Replacement Lens: Part # 68-3990574A30 (Field replaceable)

Approvals: STC/TSO-C96a Class I



Model A440 Mounting Adapter
used for fuselage mounting

MODEL	PART #	DESCRIPTION
7108051	01-0771080-51	Aviation Red • Upper • 14 VDC Base Diameter: 2.6" (66mm)
7108055	01-0771080-55	Aviation Red • Upper • 14 VDC Base Diameter: 3.75" (66mm)
7108001	01-0771080-01	Aviation Red • Upper • 28 VDC Base Diameter: 2.6" (66mm)
7108004	01-0771080-04	Aviation Red • Upper • 28 VDC Base Diameter: 5.14" (66mm)
7108014	01-0771080-14	Aviation Red • Upper • 28 VDC Base Diameter: 5.14" (66mm)
7108005	01-0771080-05	Aviation Red • Upper • 28 VDC Base Diameter: 3.75" (66mm)
7108015	01-0771080-15	Aviation Red • Upper • 28 VDC Base Diameter: 3.75" (66mm)
7108007	01-0771080-07	Aviation Red • Upper • 28 VDC Base Diameter: 3.75" (66mm)
7108017	01-0771080-17	Aviation Red • Upper • 28 VDC Base Diameter: 3.75" (66mm)
7108008	01-0771080-08	Aviation Red • Upper • 28 VDC Base Diameter: 5.14" (66mm)
7108018	01-0771080-18	Aviation Red • Upper • 28 VDC Base Diameter: 5.14" (66mm)



LED BEACONS

LED BEACONS

NOTE: NOT APPROVED FOR CERTIFIED AIRCRAFT • NOT RECOMMENDED FOR NIGHT FLIGHT.

LED wingtip and tail lighting for experimental and light sport aircraft

MICROBURST™ I KIT



Kit Model#: MB1WT - Single taillight Assembly
Part # 01-0771490-00

MICROBURST™ II KIT

WITH TAIL LIGHT



Kit Model#: MB2KWT - One MB2R (Red) & One MB2G (Green) Plus One MB1WT taillight.
Part # 01-0471519-010

MICROBURST™ II KIT

WITHOUT INTEGRATED TAIL LIGHT



Kit Model#: MB2K - One MB2R (Red) & One MB2G (Green) • Part # 01-0471519-00

MICROBURST™ III KIT

WITH INTEGRATED TAIL LIGHT



Kit Model#: MB3K - One MB3R (Red) & One MB3G (Green) • Part # 01-0471507-00

MODEL	PART #	DESCRIPTION
MB3K	01-0471507-00	Red & Green: Pair Forward Position & White Tail Position Light/Anti-Collision Light Wingtip Assembly 14 VDC LED-Strobe & Rear Facing White Nav
MB2K	01-0471519-00	Red & Green: Pair Forward Position Light/Anti-Collision Light Wingtip Assembly 14 VDC
MB2KWT	01-0471519-01	Red & Green: Pair Forward Position Light / Anti-Collision Light Wingtip Assembly Plus MB1 Tail Position/Anti-Collision Light Assembly 14 VDC
MB1WT	01-0771490-00	White Tail Position/Anti-Collision Light Assembly 14 VDC

Whelen Aerospace Technologies is proud to introduce the BLAZE, an all LED wingtip position, anti-collision and tail light assembly for the LSA and experimental market. Low drag and light weight without compromising safety and visibility.



- 0.19 lbs.** (132gm)
- L: 4.54"** (115.5mm) **W: 1.33"** (34mm)
H: 1.23" (32mm)
- 14VDC:** Position Light 0.40 Amps
Anti-Collision Light 2.15 Amps Peak

NOTE: NOT APPROVED FOR CERTIFIED AIRCRAFT • NOT RECOMMENDED FOR NIGHT FLIGHT.

Replacement Lens: Part # PC099056

MODEL	PART #	DESCRIPTION
BLAZE1RG	01-95001-03	Red & Green: Pair Forward Position & White Tail Position Light/Anti-Collision Light Wingtip Assembly 14 VDC





BEECHCRAFT BARON/ BONANZA KIT

WINGTIP LED



BEECHCRAFT LANDING GEAR KIT

MAIN GEAR LANDING LIGHT LED



www.gallagheraviationllc.com • 1-833-425-5288



KING AIR 350

LED WINGTIP LIGHT ASSEMBLY



KING AIR 90777

LED WINGTIP LIGHT ASSEMBLY



www.kadexaero.com • 1-888-523-3988

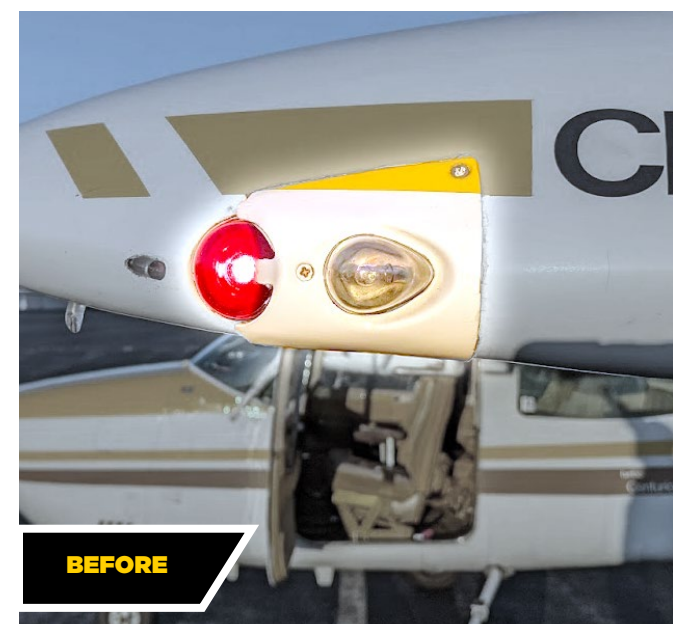
CONTACT RESELLERS FOR PRICING AND AVAILABILITY



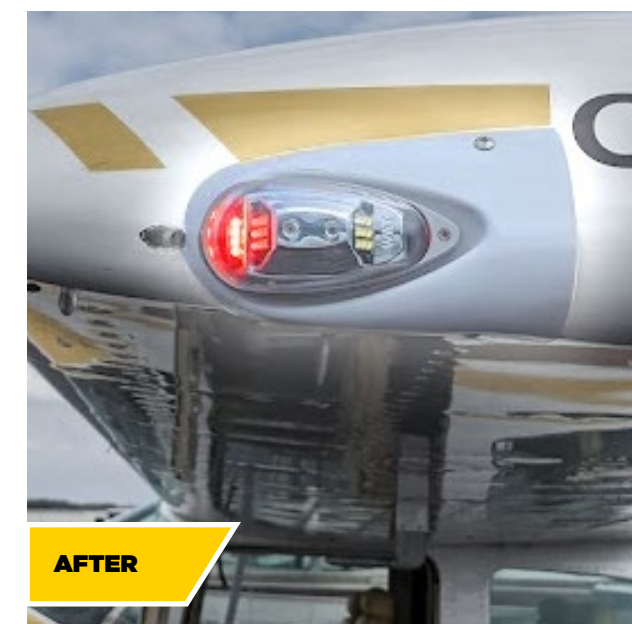
WILCO

ORION CESSNA STC KIT

WINGTIP LED



BEFORE



AFTER



WILCO

ORION BEECHCRAFT STC KIT

WINGTIP LED



www.wilcoaircraftparts.com • 316-943-9379

- Produces 3 - 15 times more light, engineered specially for each model aircraft
- Reduces electrical load and heat output
- 5 year/ 5,000hr warranty, proven system based on time-tested components
- Increased Reliability
- Increases safety, see and be seen
- More closely approximates the color temperature of Natural Daylight
- FAA STC & EASA approvals for hundreds of make/models of aircraft
- Thousands of installations worldwide

The Whelen Aerospace Technologies (WAT) BoomBeam HID lights is the best upgrade path for your Cirrus's landing light. We can provide a 7-time increase in light output. Greatly improving the safety of both day and night operations. This 85-watt BoomBeam consists of a new glass lens, reflector assembly, new lamp, 2 cables and the latest technology 85-watt ballast, and all the hardware necessary to install the kit. As a previous OEM supplier to Cirrus WAT has produced thousands of these units. We used that knowledge gained to create the best landing light available for your Cirrus. Our reflector technology is the best in the market. We married this improved reflector with our latest technology 85-watt ballast to create a light upgrade that improves light output by 700% over the factory installed light. But we did not stop there. We know that each pilot wants his airplane set up just for him. Some want a broad, wide landing beam and others, (that may have our TriTips installed), want to maximize the range of the light. The WAT BoomBeam light is tuneable so you can adjust the light for a custom fit to you and your aircraft.

CIRRUS KITS

COWLING LANDING LIGHT



Round Kit



Rectangular Kit



Rectangular Upgrade Kit

KIT #	AIRCRAFT SERIAL #	DESCRIPTION
LSM-500-082-17	SR20 • S/N 1148-1422 SR22 • S/N 0119-0820	85W Round Landing Light Installation Kit • Cowling
LSM-500-082-19	SR20 • S/N 1423-2043 SR22 • S/N 0821-3495	85W Rectangular Landing Light Installation Kit • Cowling
LSM-500-082-21	SR20 • S/N 2044-2126 SR22 • S/N 3389-3827 SSR22T With HID Lights	85W Rectangular Landing Light Installation Kit • Cowling
LSM-500-082-27	SR20 • S/N 2127 and Subsequent SR22 • S/N 3828 and Subsequent SR22T With Factory Installed LED Lights	85W Rectangular Landing Light Upgrade LED to HID

CIRRUS KITS

WINGTIP RECOGNITION LIGHT



The Whelen Aerospace Technologies (WAT) BoomBeam HID wingtip lights is the best upgrade path for your Cirrus's wingtip lights. This system is for aircraft with stock recognition wingtip lights. This kit consists of model specific bracketry to slide into place replacing the poor performing LEDs that come stock on the aircraft. The 85-watt BoomBeam consists of a new glass lens, reflector assembly, new lamp, cables, custom bracketry, the latest technology 85-watt ballast, and all the hardware necessary to install the kit. As a previous OEM supplier to Cirrus WAT has produced thousands of these units. We used that knowledge gained to create the best landing light available for your Cirrus.

KIT #	AIRCRAFT SERIAL #	DESCRIPTION
LSM-500-135-1	SR20 (G3) • S/Ns 1886 and Subsequent SR22 • S/Ns 2238 and Subsequent SR22T	85W Cirrus Wing Tip Light Installation



HUNDREDS OF OTHER STC'D GENERAL AVIATION HID LIGHTING KITS AVAILABLE. PLEASE VISIT OUR WEBSITE OR CONTACT US TO SEE IF YOUR AIRCRAFT IS APPROVED.



- Produces 3 - 15 times more light, engineered specially for each model aircraft
- Reduces electrical load and heat output
- 5 year/ 5,000hr warranty, proven system based on time-tested components
- Increased Reliability
- Increases safety, see and be seen
- More closely approximates the color temperature of Natural Daylight
- FAA STC & EASA approvals for hundreds of make/ models of aircraft
- Thousands of installations worldwide

BEECH BONANZA KITS

COWLING & WING LIGHTS



Wing Lights

KIT #	DESCRIPTION
LSM-500-006-11	60W • 14 Volt Installation • Wing Mounted



CESSNA 400

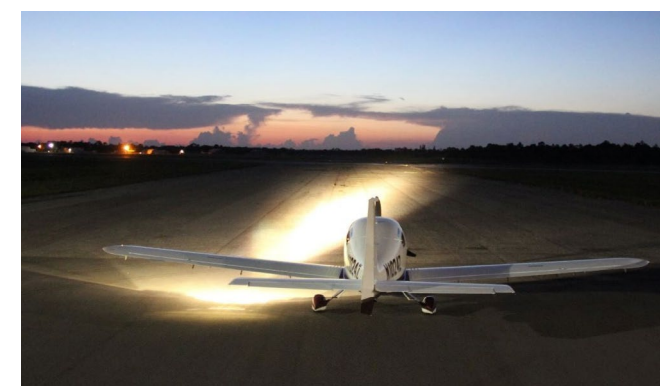
WING LIGHTS



Whelen Aerospace Technologies (WAT) Cessna 400 series wing landing and taxi light installation kit. This kit features a new landing and taxi rectangular light assembly. Each lamp is independently powered by the WAT 28V 85-watt ballasts, giving this system multi redundancy. The system comes with all components needed for installation.

Lancair Models LC40-550FG, LC41-550FG, LC42-550FG
Columbia Models: 300, 350, 400
Cessna Model 400

KIT #	DESCRIPTION
LSM-500-092-7	60W • 14 Volt Installation • Conversion From Stock Halogen Landing/Taxi Light Kit
LSM-500-092-9	60W • 28 Volt Installation • Conversion From Stock Halogen Landing/Taxi Light Kit



SPEED SPLITTERS

AERODYNAMIC FAIRING MOD



A two part aerodynamic fairing that covers both the front and rear legs of each of the six exposed flap hinges; this mod is worth **3MPH**.



MAKE	MODEL	KIT #
Piper	Comanche PA-24-250, PA-24-260, PA-24-260C, PA-24-400, PA-30, PA-39	LSM-100-008
Piper	PA-28-140, PA-28-150, PA-28-151, PA-28-160, PA-28-161, PA-28-180, PA-28-181, PA-28-201T, PA-28-235, PA-28-236, PA-28R-180, PA-28R-200, PA-28R-201, PA-28R-201T, PA-28RT-201, PA-28RT-201T, PA-32-260, PA-32-300, PA-32-301, PA-32-301T, PA-32R-300, PA-32R-300T, PA-32R-301, PA-32R-301T, PA-32RT-300, PA-32RT-300T, PA-32RT-301, PA-32RT-301T, PA-44-180, PA-44-180T	LSM-200-014
Piper	PA-34-200	LSM-200-017-Seneca1
Piper	PA-34-200T, PA-34-220T	LSM-200-017

SPEED SPATS

DRAG REDUCING MOD



Reduce the drag caused by the retracted but some what exposed main gear wheels and tires. Speed Spats are with **4MPH** in speed gain.



MAKE	MODEL	KIT #
Piper	Comanche PA-24-180, PA-24-250, PA-24-260, PA-24-260C, PA-24-400, PA-30, PA-39	LSM-100-001
Piper	PA-28R-180, PA-28R-200, PA-28R-201, PA-28R-201T, PA-28RT-201, PA-28RT-201T, PA-32R-300, PA-32R-300T, PA-32R-301, PA-32R-301T, PA-32RT-300, PA-32RT-300T, PA-32RT-301, PA-32RT-301T, PA-34-200, PA-34-200T, PA-34-220T, PA-44-180, PA-44-180T	LSM-200-006

SPEED SEALS



A flap gap seal that provides **3MPH** in speed and much improved pitch authority. You'll get the nose gear off sooner and hold the nose wheel off longer after landing.



MAKE	MODEL	KIT #
Piper	Comanche PA-24-180 PA-25-250	LSM-100-020-12-13
Piper	Comanche PA-24-250, PA-24-260, PA-24-260C, PA-24-400, PA-30, PA-39	LSM-100-020-1-2
Piper	PA-28-150, PA-28RT-201, PA-32RT-301T, PA-28-160, PA-28-161, PA-28-180, PA-28-181, PA-28-201T, PA-28-235, PA-28-236, PA-28R-180, PA-28R-200, PA-28R-201, PA-28R-201T, PA-28RT-201, PA-28RT-201T, PA-32-260, PA-32-300, PA-32-301, PA-32-301T, PA-32R-300, PA-32R-300T, PA-32R-301, PA-32R-301T, PA-32RT-300, PA-32RT-300T, PA-32RT-301, PA-32RT-301T, PA-44-180, PA-44-180T	LSM-200-016
Piper	PA-34-200T, PA-34-220T	LSM-200-018

HUBBA HUBBA CAP



Our Hubba Hubba Cap fits most 6-inch aircraft wheels. The Hubba Hubba Cap has an access door with a 1/4 turn fastener for EASY access to the air valve. How many times have your tires been low on pressure but you did not want to remove the hub cap to put air in your tires? The Hubba Hubba Caps will let you keep your wheels and bearings free of dirt and grime.



CIRRUS WHEEL PANTS



Whelen Aerospace Technologies WAT IceSkates offer new styling, new materials and higher performance for your Cirrus. The WAT IceSkate for your main gear offers a more structurally substantial pant. Our pant is manufactured with better, fire resistant and stiffer materials, (Carbon Fiber, etc). We also know that Cirrus are steered with differential braking so temperatures are critical. In order to help control brake heat and improve brake performance, IceSkates have an air vent that blows fresh air right on the brake caliper. Customers report improved braking longer brake pad performance.





WHELEN AEROSPACE TECHNOLOGIES

WWW.FLYWAT.COM

WHELEN AEROSPACE TECHNOLOGIES, LLC.
210 AIRPORT DRIVE EAST • SEBASTIAN, FL 32958

☎ **1-772-562-4757** ✉ **INFO@FLYWAT.COM**