

# WHELEN<sup>®</sup>

ENGINEERING COMPANY INC.

51 Winthrop Road  
 Chester, Connecticut 06412-0684  
 Phone: (860) 526-9504  
 Fax: (860) 526-2009  
 Internet: [www.whelen.com](http://www.whelen.com)  
 Sales/Service e-mail: [aviation@whelen.com](mailto:aviation@whelen.com)

## Installation Guide: Model 90029( ) P/N: 01-0790029-( ) Wingtip Light Assembly FAA-PMA Approved

The 90029( ) light assembly is designed to be internally mounted on the outboard edge of a wingtip behind the aircraft lens.



Model	P/N	Description
900291	01-0790029-01	Wingtip Strobe/Position (Red)
900292	01-0790029-02	Wingtip Strobe/Position (Green)
900293	01-0790029-03	Wingtip Strobe/Position (Red w/Recognition Light)
900294	01-0790029-04	Wingtip Strobe/Position (Green w/Recognition Light)

### SPECIFICATIONS:

Nominal Operational Voltage: .....28VDC

### Input Current:

Position Lights.....0.9 Amps  
 Recognition (optional).....0.3 Amps  
 Strobe (pulse) .....1.6 Amps  
 Flashrate.....50 ± 5 FPM  
 Weight.....2.6 lbs.

### CONTINUED AIRWORTHINESS:

**Note:** To reduce eye strain, use an optical filter such as dark glasses or a blue covering dome during LED inspection.

**Strobe:** The flash rate may be checked by indirect observation of the strobe light. Caution: Do not look directly at the strobe light.

**Position Light:** Observe bulb illumination.

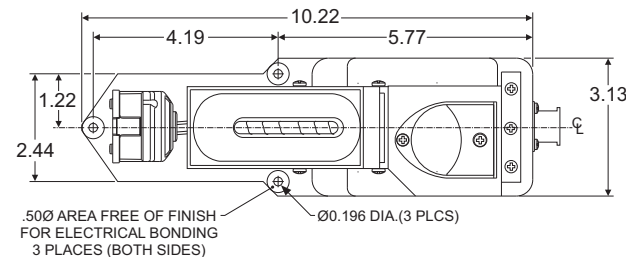
**Recognition Light:** The recognition light is designed with 6 white LEDs. If one or more LEDs fails, the unit may be replaced at the discretion of the operator.

**Lens:** Inspect the lens. If there is excessive scratching, pitting, discoloration or cracking the lens may be replaced at the discretion of the operator.

### INSTALLATION PROCEDURES:

The following information provides guidelines for the installation of the Whelen light. Please refer to the OEM manual for your aircraft for specific removal and installation instructions.

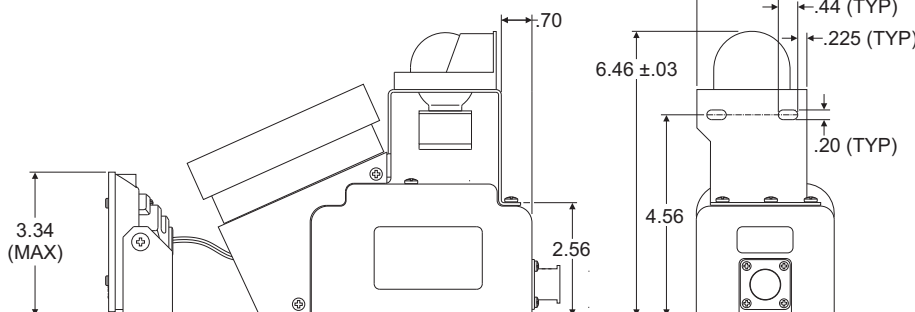
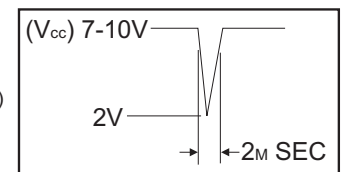
1. Choose the appropriate light assembly.
2. Using the mounting detail information provided, prepare the aircraft for means to secure the light assembly.
3. Using the appropriate hardware install the unit to the aircraft.
4. Connect the inputs according to the chart shown. Connect the power leads to an appropriately sized breaker. Connections to be in accordance with FAA approved methods. Insure that all leads are clear of any obstructions and secured as required.  
**NOTE:** SYNC is a low power input control signal that causes the strobe lights to flash at the same time. If Synchronization is not necessary, the connection may be left open.
5. Place the light switches in the ON positions and verify proper operation of the Whelen lights.
6. Check all avionics systems for interference from this installation.
7. A flight check should be performed by a properly certified pilot.
8. Update aircraft records, complete Form 337 and obtain FAA field approval for installation, as necessary.

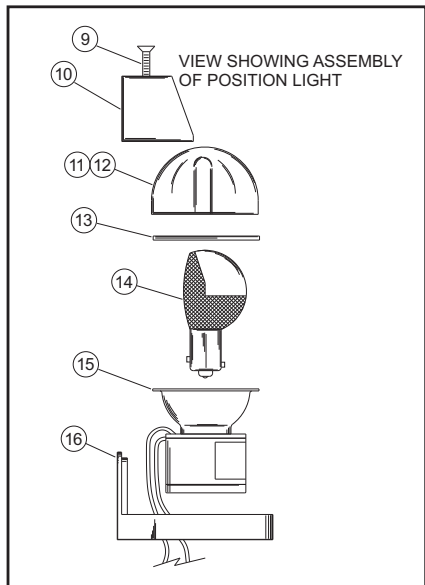
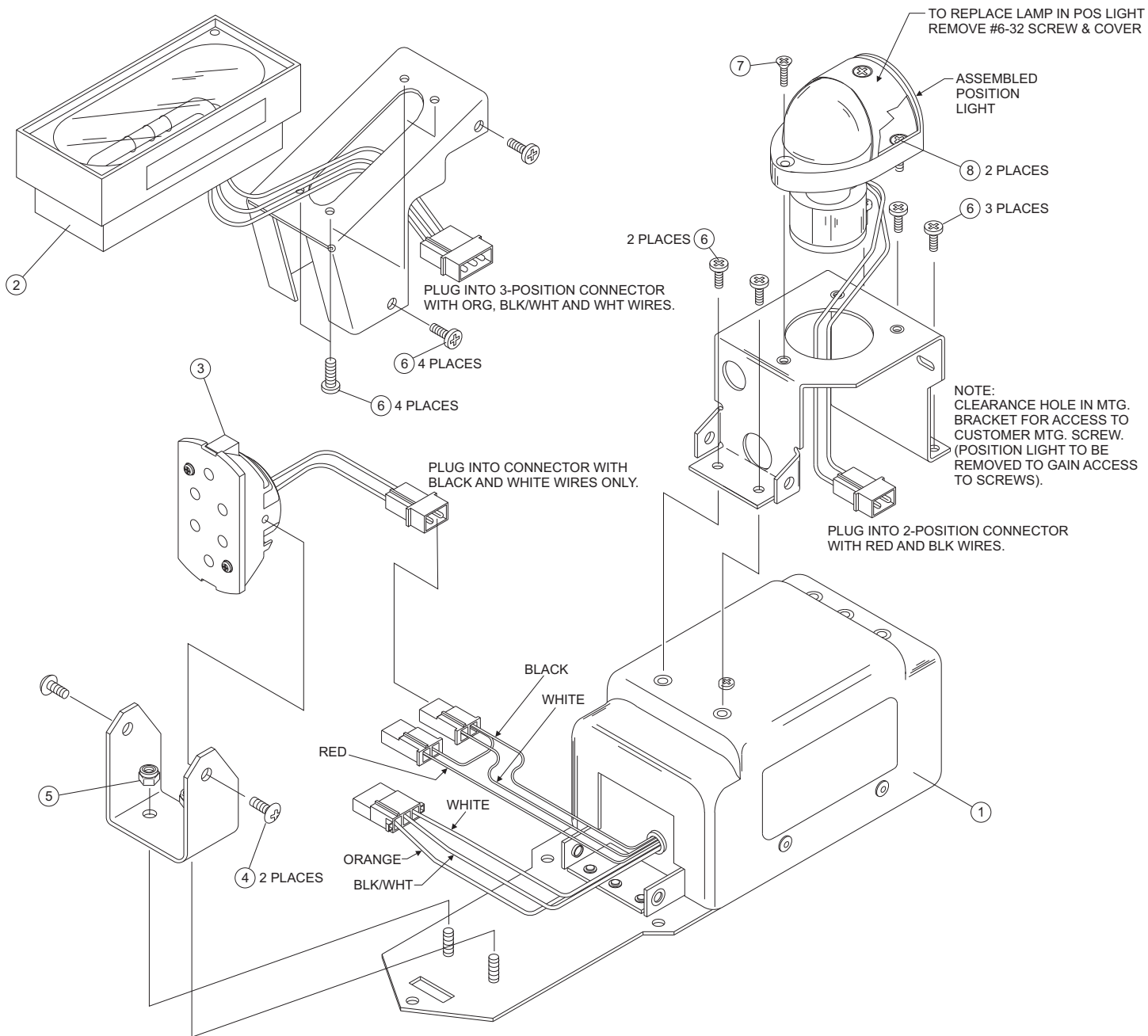


### Connector Wiring (AMP 205841-1)

1. Position light - +28VDC
2. Recognition Light - +28VDC
3. Strobe - +28VDC
4. SYNC (Input)
5. Ground - Power return

### SYNC Signal





ITEM	PART NUMBER	DESCRIPTION
1	01-0790120-00	Power Supply, Replacement
2	01-0790028-P0	Strobe Light Head, Replacement
3	01-0771898-P0	Recognition Light Head, Replacement
4		#10-32 x 3/8" PHTRUSS HD
5		#10-32 Self-Locking Hex Nut, MS21044N3
6		#8-32 x 3/8" Phillips PHMS SS, MS51957-43
7		#6-32 x 1/2" Phillips PFHMS C'snk MS51959-30
8		#6-32 x 3/8" Phillips PFHMS C'snk MS51959-28
9		#6-32 x 3/4" Phillips PFHMS82/C'snk MS51959-32
10	19-150089-001	Retainer, W1252
11	68-4230020-40	Lens, Green, W1284G
12	68-4230020-50	Lens, Red W1284R
13	38-0230021-00	Gasket, W1283
14	34-0428020-65	Lamp, W129028
15	02-0350102-03	Lamp Socket, W1260
16	54-590021-000	Baseplate, W-1251