

# RELOADR™



USER GUIDE

MARKSMAN

Thanks for purchasing the MARKSMAN Digital Reloading Scale! This User Guide is designed to get you up and running quickly with your scale. Scales are precision instruments and require proper care and skill to get the best results. If you have questions or need support, visit us at <http://www.truweigh.com/support> or scan the QR Code on the back of this manual using your smartphone.

## What's In The Box

User Guide



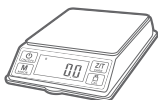
Two AAA Batteries



Powder Pan & 100g Weight



MARKSMAN Digital Scale with cover



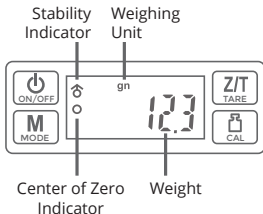
## Key Descriptions

**ON/OFF** - Turns the scale ON or OFF.

**MODE** - Changes the weighing unit.

**ZERO/TARE** - Zero's the scale. Also subtracts the weight of an empty container (see Tare Function).

**CAL** - Enter calibration mode. See Calibration.

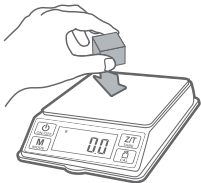


**Stability Indicator:** Indicates that the reading is stable.

**Center of Zero Indicator:** Indicates that the scale is zero'd and ready for the next weighing.

## Weighing Your First Item

1. Press the **ON/OFF** key to turn the scale on.
2. Place the item on the center of the weighing platform.
3. Wait for the stability indicator to display, then take your reading from the display. You can press the **MODE** key to convert between weighing units.
4. The scale's auto-off function will turn the scale off after 3 minutes of inactivity or you can press the **ON/OFF** key to turn the scale off.



## Disabling The Auto-Off Feature

This scale has an auto-off feature that will power off the scale after 3 min of inactivity. To disable the auto-off:

1. Press and hold the **MODE** key until the display shows "AUOFF".
2. The auto-off is now disabled and the scale will remain on until manually powered off. The auto-off will be restored the next time you turn the scale on.

## Things To Avoid



Unlevel Surfaces



Radio Frequency Interference



High Humidity



Air Currents



Vibration



Extreme Temps

## Tare Function

The Tare function allows you to subtract the weight of a container so that the display only shows the weight of the contents.



Place an empty tray or container on the platform and wait for the stability indicator.

Press the **Z/T** key to subtract the container's weight.

Add items to the container to see their weight on the display.



**NOTE:** The weight of the container will subtract from the available capacity and will leave a negative value on the display once the weight is removed. Press **Z/T** again to return the display to zero.

## Accuracy

Your scale comes calibrated from the factory and most users won't need to calibrate their scale for a long time. You should check your scale's accuracy periodically using the included calibration weight and perform calibration if necessary.



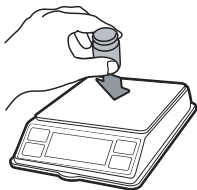
**NOTE:** Only use trusted calibration weights. Household items such as bottles and cans with weights printed on the side are not suitable for checking accuracy as these values are approximate and don't include the container weight (Net Weight).

## Calibration



Calibration adjustment is permanent and should only be performed using accurate calibration weights that match the requirements for your scale (see the chart on back). Do not use coins or other household items to calibrate.

1. Prepare the 100g weight.
2. Find a flat and level surface to perform calibration and let the scale adjust to room temperature.
3. Press **ON/OFF** to turn the scale on and wait for the scale to stabilize.
4. Press the **CAL** key. The display will show 'CAL'.
5. Make sure nothing is on the platform then press **CAL** to confirm the zero point.
6. The display will then flash the required calibration weight.
7. Place the required calibration weight on the center of the platform.
8. The display will show 'PASS' then return to normal weighing mode. You may now turn the scale off or continue weighing.



## Six Steps For Success:

This procedure is tailor made for obtaining maximum accuracy.



### 1. Warm Up

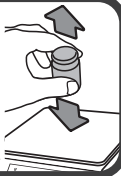
Press ON/OFF to turn the scale on. Allow the scale to warm up for 30 seconds.



### 2. Initialize

Initialize the scale by applying and removing a load of 100 g, four times in a row.

Note: Readings may be inconsistent during this step.



### 3. Calibrate

Calibrate the scale using the included calibration weight. Refer to the calibration instructions in scale manual.

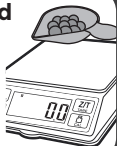




## 4. Keep It Centered



When calibrating and weighing, make sure to apply items to the center of the platform.



## 5. Weigh Promptly



Keep measurements within 15 seconds to prevent creep. Never leave items on the scale platform for extended periods of time.



## 6. Zero



Press the TARE key to re-zero the scale between each weighing.



## Specifications

<b>Model</b>	<b>RMM-100-005</b>
<b>Max Capacity</b>	100 g / 3.527 oz / 1500gn / 500 ct
<b>Readability</b>	0.005 g / 0.001 oz / 0.1 gn / 0.05 ct
<b>Weighing Units</b>	g, oz, gn, ct
<b>Dimensions</b>	Overall: 3.0 in x 4.3 in x 0.8 in Platform: 2.7 in x 2.7 in Display: 0.6 in x 1.3 in
<b>Calibration Weight</b>	100g (included)
<b>Power</b>	2 x AAA Batteries (included)
<b>Warranty</b>	10 Year Limited Warranty

For more information, including weighing tips and support, scan this code with your smartphone

Or visit us online at [truweigh.com/support/](https://truweigh.com/support/)

