

HCP-91306

Twin Spot Emergency Light



Installation & Maintenance Instruction Manual

Important:

It is illegal for anyone, except for a licensed electrician to install or maintain this product. Before installation, ensure that the electricity supply has been switched off and isolated. Installation must be carried out in accordance with the relevant Australian and International Standards.

Specification:

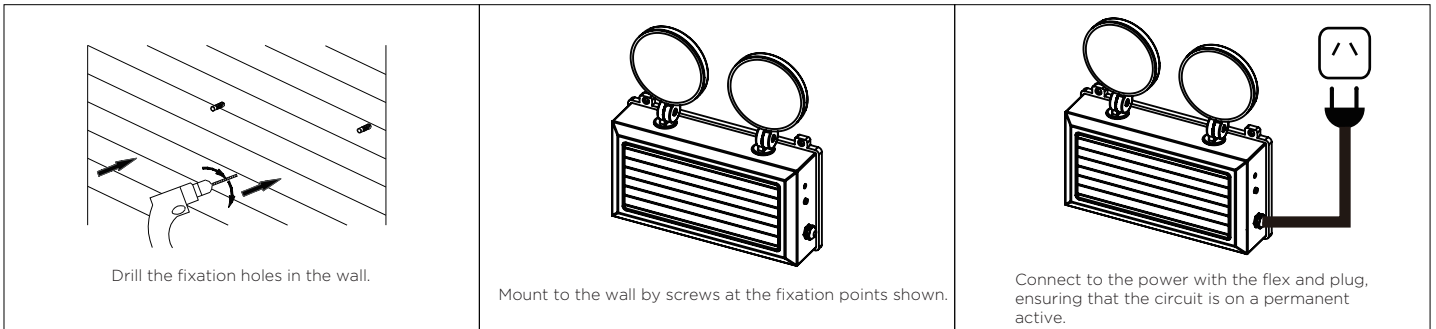
Operating Supply : 220-240V / 50-60Hz

Compliance : AS 2293

Viewing : 24m

Mounting : Wall Mount

Installation:



Note:

For first usage, power ON the unit for 24 hours to fully charge the battery. Interrupting the mains supply will discharge the battery.

Testing:

The emergency lamp must illuminate for at least 90mins after disconnection from the mains. Press and hold Test Button or switch Off Mains Supply, check the emergency lamp is ON. Released the Test Button or Switch On Mains Supply, check the normal lamp is ON (Maintained operation).

Warranty:

Products have 3 years (from date of purchase) replacement warranty including battery. Products have to be connected to permanent live power otherwise warranty will be void. Must be installed by licensed electrician. This warranty does not cover loss or damage by misuse, incorrect installation, incorrect voltage or non-authorized electrical connections, adverse external conditions (such as power surges and dips, exposure to heat, corrosion etc). Products that have been altered in any way or used other than in accordance with instruction are not covered by this warranty.

Must be installed by a licensed electrician

Contact Details:

8/133 Beauchamp Road
Matraville NSW 2036
Australia

Tel: 02 9381 8383
Email: sales@havitcommercial.com.au
Web: www.havitcommercial.com.au

Warranty Terms & Conditions*

