

LED Batten

Product reference numbers: HCP-238401, HCP-238401-EM

Installation & Maintenance Instruction Manual

Important:

It is illegal for anyone, except for a licensed electrician to install or maintain this product. Before installation, ensure that the electricity supply has been switched off and isolated. Installation must be carried out in accordance with the relevant Australian and International Standards.

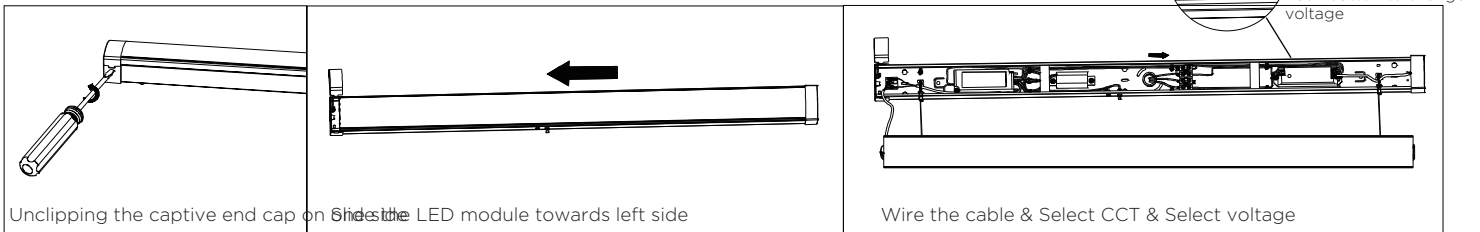
Product	Input	Power (W)	Lumens (lm)	CCT (K)	Beam Angle	CRI	Fitting Colour	Dimension L x W x H (mm)
HCP-238401	240V 50Hz	20/40 Switchable	3600/4000/3800	3000/4000/5700	120o	>80	White	1210 x 75 x 65

Product	Input	Power (Maintained Mode)	Power (EM Mode)	CCT (K)	Beam Angle	CRI	Fitting Colour	Dimension L x W x H (mm)
HCP-238401-EM	240V 50Hz	20W/40W Switchable	3W	3000/4000/5700	120o	>80	White	1210 x 75 x 65

Feature:

- Quick and easy to install with LED module that can't be unplugged and captive end cap.
- Wide body allows for covering of conventional batten fixing points.
- 20W, 40W light output switchable.
- Opal diffuser for even light distribution.
- 20mm knockout for conduit or cable glands
- Compatible with plug in Microwave Sensor HCP-23840-MC

Installation:



Note:

For first usage of emergency batten, power ON the unit for 24 hours to fully charge the battery. Interrupting the mains supply will discharge the battery.

Testing:

The emergency lamp must illuminate for at least 90mins after disconnection from the mains. Press and hold Test Button or switch Off Mains Supply, check the emergency lamp is ON. Released the Test Button or Switch On Mains Supply, check the normal lamp is ON (Maintained operation).

Warranty:

Products have 5 years (from date of purchase) replacement warranty not including battery. (battery has 2 years replacement warranty)
 Products have to be connected to permanent live power otherwise warranty will be void.
 Must be installed by licensed electrician.
 This warranty does not cover loss or damage by misuse, incorrect installation, incorrect voltage or non-authorized electrical connections, adverse external conditions (such as power surges and dips, exposure to heat, corrosion etc).
 Products that have been altered in any way or used other than in accordance with instruction are not covered by this warranty.

THESE FITTINGS MUST BE INSTALLED BY A LICENSED ELECTRICIAN