

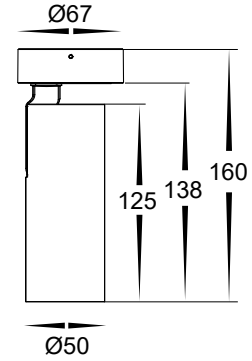
# 10w + 15w 5 Colour Surface Mounted Spot Lights Installation Instructions



## Product Specifications

Model No.	HCP-1022112	HCP-1032112	HCP-1022212	HCP-1032212
Material	Aluminium			
Colour	Black	White	Black	White
IP Rating	IP20		IP20	
Input Voltage	240v		240v	
Protection Class	2 (No Earth Required) <input type="checkbox"/>		2 (No Earth Required) <input type="checkbox"/>	
Lamp Base	Built in LED		Built in LED	
Lamp Wattage	1x 10w		1x 15w	
Colour Temp	5-Colour - 2700k, 3000k, 4000k, 5000k, 5700k		5-Colour - 2700k, 3000k, 4000k, 5000k, 5700k	
Lumens	518lm, 532lm, 582lm, 614lm, 626lm		819lm, 879lm, 973lm, 1000lm, 876lm	
CRI	> 90		> 90	
Dimmable	Yes - Triac Dimmable		Yes - Triac Dimmable	
Warranty	5 Years Replacement*		5 Years Replacement*	

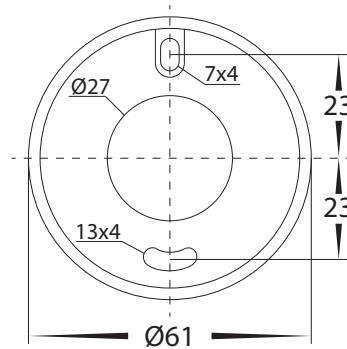
## 10w Dimensions



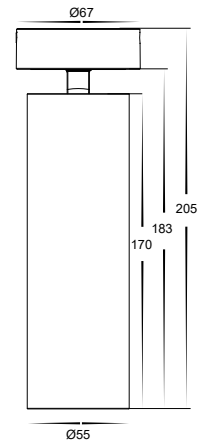
## Important Safety Issues:

- This product must be installed by a qualified electrician according to AS/NZS 3000.
- Ensure all electrical mains are disconnected before any installation.
- Modification of this product will void any warranty.
- Havit Commercial does not take responsibility for wrong installation, incorrect use, or use of installation material that does not belong to the system.
- Aluminium and 304SS fittings must not be installed within 5km of any salt water environments.
- All o-rings and seals must be in place correctly to maintain warranty
- This form may be updated at any time due to product improvements, please check online installation form for most current version.

## Mounting Base Dimensions



## 15w Dimensions



## Steps for Installation:

1. Make sure that the electrical circuit is free of voltage (master switch off)
2. Remove mounting base from fitting by loosening allen screws on side of base and set fitting aside.
3. Slide cable through cable entry hole and attach mounting base using appropriate screws for application.
4. Insert cables into connector blocks on fitting.
5. Reattach fitting to mounting base and tighten allen screws. Do not overtighten.
6. Fitting is set to 3000k, while fitting is switched off slide switch located on the back of light fitting to desired colour temperature.
7. Direct light fitting to desired position by twisting left and right or up and down making sure not to twist too far to avoid damaging fitting.
8. Repeat these steps if more than 1 fitting is being installed
9. All connections must be carried out carefully, inspect all contacts before switching back on the electric circuit.

## Steps for Installation of Honeycomb lens:

1. Make sure that the electrical circuit is free of voltage (master switch off)
2. Remove inner ring from fitting by twisting anti-clockwise
3. Insert Honeycomb lens into back of inner ring
4. Reinsert inner ring by twisting clockwise until it cannot twist anymore

## Steps for Installation of lens:

1. Make sure that the electrical circuit is free of voltage (master switch off)
2. Remove inner ring from fitting by twisting anti-clockwise
3. Insert lens into fitting.
4. Reinsert inner ring by twisting clockwise until it cannot twist anymore

## Steps for Installation of Coloured Inner Ring:

1. Make sure that the electrical circuit is free of voltage (master switch off)
2. Remove inner ring from fitting by twisting anti-clockwise.
3. Insert new coloured inner ring by twisting clockwise until it cannot twist anymore
4. Reinsert inner ring by twisting clockwise until it cannot twist anymore

**Must be installed by a licensed electrician**

## Contact Details:

8/133 Beauchamp Road  
Matraville NSW 2036  
Australia  
Tel: 02 9381 8383  
Email: sales@havitcommercial.com.au  
Web: www.havitcommercial.com.au

## Warranty Terms & Conditions\*



[www.havitcommercial.com.au](http://www.havitcommercial.com.au)

