

# Gravity<sup>®</sup> SL PGS

Gravity SL PGS, a unique blend of plant growth hormones, is designed to stimulate root growth and plant health in new seedlings, transplants, and existing plants. Gravity SL PGS greatly assists with seed germination and cutting/sod/seed establishment. It is also available as a coating on turfgrass seed.

## APPLICATION RATE:

**Turf:** 0.1 to 0.15 fluid ounce per 1,000 square feet; 4 - 6.5 fluid ounces per acre

**Transplant Solution:** 0.75 fluid ounce per 1 gallon of water

## INGREDIENTS:

**0.090%** Cytokinin, as Kinetin

**0.030%** Gibberellic Acid

**0.045%** Indole-3-butyric Acid

**99.835%** Other Ingredients

## FEATURES & BENEFITS

- Contains 3 EPA registered plant growth hormones: Cytokinin, Gibberellic Acid, IBA
- Improves root growth on young and established plants
- Aids recovery of stressed plants, including faster aeration hole closure

## RESULTS

Photo taken in March after a newly sodded field was treated with Gravity SL PGS the previous Fall.



[HeritagePPG.com](http://HeritagePPG.com) | [@heritageppg](https://twitter.com/heritageppg)

ALWAYS READ AND FOLLOW LABEL DIRECTIONS. Because of factors outside of Heritage Professional Products Group control such as weather, soil, planting, and product application; individual results to be obtained, including but not limited to: financial performance, profits, losses and yields cannot be predicted or guaranteed by Heritage Professional Products Group. Gravity is a registered trademark of Heritage Landscape Supply Group. ©2023 Heritage Landscape Supply Group.



GOLF



LAWN CARE



ORNAMENTAL

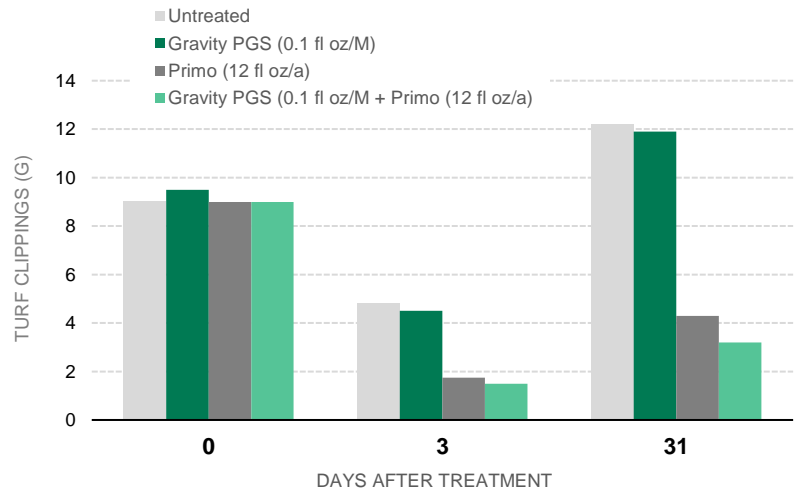


SPORTS  
TURF

## DID NOT INFLUENCE PRIMO® REGULATION

On bermudagrass fairways, plots were treated with Gravity SL PGS and Primo®. Gravity SL PGS did not significantly increase clippings, even when plots were treated with Primo®.

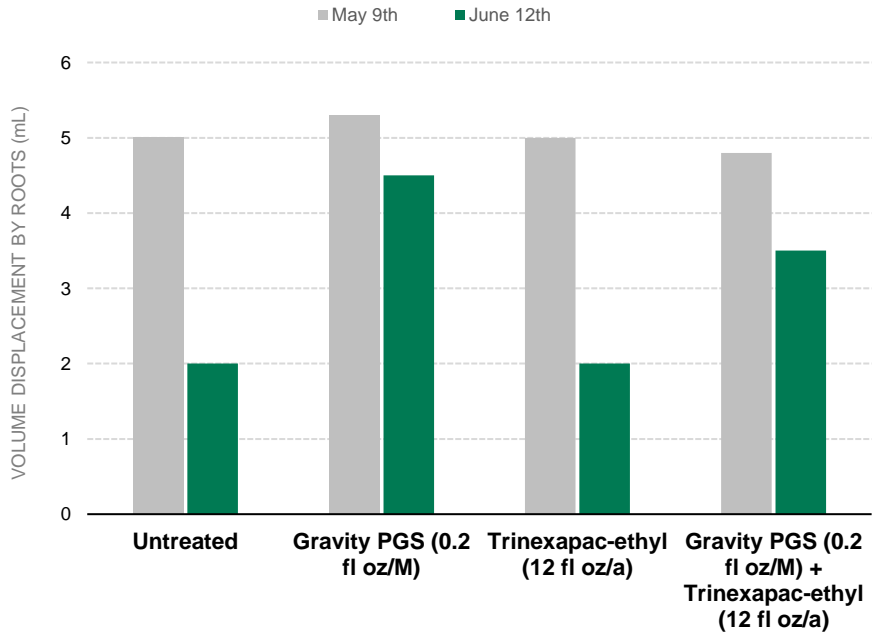
M. Harrell. Southeastern Turf Research. 2014



## MAINTAINED GREATER ROOT MASS

Plots were treated with Gravity SL PGS and Trinexapac-ethyl. Overall root mass declined over the summer time. High rate of Gravity SL PGS maintained the greatest root mass. Trinexapac-ethyl reduced roots. Gravity SL PGS plus Trinexapac-ethyl had greater roots.

S. McDonald, Turfgrass Disease Solutions, 2014



[HeritagePPG.com](http://HeritagePPG.com) | [@heritageppg](https://twitter.com/heritageppg)

ALWAYS READ AND FOLLOW LABEL DIRECTIONS. Because of factors outside of Heritage Professional Products Group control such as weather, soil, planting, and product application; individual results to be obtained, including but not limited to: financial performance, profits, losses and yields cannot be predicted or guaranteed by Heritage Professional Products Group. Gravity is a registered trademark of Heritage Landscape Supply Group. ©2023 Heritage Landscape Supply Group.