

GN Series

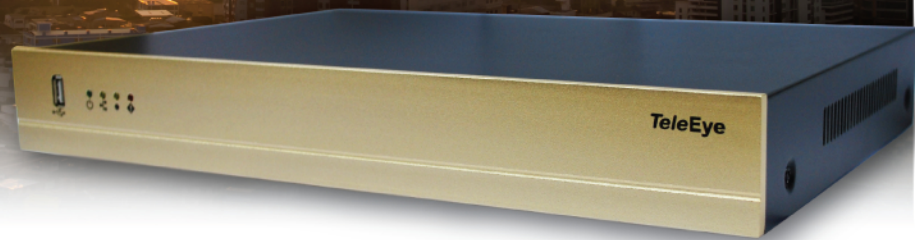
WQHD Digital Video Recorders

TeleEye

4X the Resolution of 720p HD

Feature Highlights

- WQHD (2560 x 1440)
- Enhanced H.264
- Hacker Resistant
- PoE Support
- Pre / Post Alarm Images
- Arm / Disarm Interface
- E2E Health Check
- Duplicated Recording



Why WQHD for video surveillance?

WQHD is a video resolution standard equivalent to 2560 x 1440 pixels. Since WQHD video footage comes with 4 times the resolution of 720p HD, it contains much more useful information for post-incident investigation. As WQHD is sitting between 1080p and 4K, it is an excellent balance between video clarity and processing requirement in a practical video surveillance system.



Enhanced H.264 – Greater detail with less data

Higher resolution videos certainly give benefits in investigations. Nevertheless they would lead to the requirement on a more sophisticated video compression engine in order to improve the manipulations such as video streaming and storage. TeleEye GN Series DVRs and MP400 Series WQHD IP cameras support enhanced H.264 in which the compression is 30% more efficient than ordinary H.264.

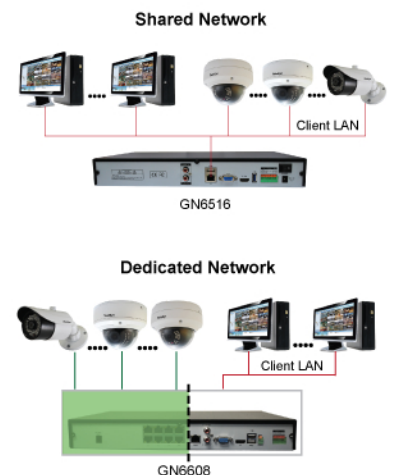
Two opposite approaches, Two distinguished benefits

Shared Network – Simplest installation

GN6516 is designed for projects requiring IP camera data running on an existing LAN in the premises. By running video feeds through an existing network infrastructure, it greatly simplifies the installation work that would result in a lower deployment cost.

Dedicated Network – Highest security

GN6608 is designed for projects requiring IP cameras completely separate from the existing LAN in the premises. With the TeleEye proprietary 5-layer security protection, GN6608 shields IP cameras off from the outside world, ensures the highest security standard and minimizes the chance of the video surveillance system being attacked.



Not only for evidences ... They minimize loss & damage

GN Series DVRs are designed for fulfilling the complete security needs. GN Series DVRs can interface with different types of alarm sensors. When any incident is detected, the DVR would make a connection back to a 7/24 security centre. The operator can inspect the video and respond to the incident swiftly and precisely, such as expelling the intruder by delivering a verbal warning message. Hence the loss and damage due to the incident can be minimized.

Live or event-driven monitoring ... Up to your choice

GN Series DVRs are fully compatible with all TeleEye video management platforms, including sureSIGHT and sureGUARD, for different application's requirements. sureSIGHT is designed for monitoring of numerous live video feeds simultaneously, whilst sureGUARD is purposely built for visual alarm verification in professional security centres.

Specifications

MODEL		GN6516	GN6608
CAMERA INTERFACE	CONFIGURATION	Shared Network	Dedicated Network
	RESOLUTIONS	WQHD, 1080p, 720p	
	MAX. CHANNELS	16	8
	DEDICATED VIDEO PORTS	-	8x, 100base-T, PoE
VIDEO	COMPATIBLE MODELS	TeleEye MP400, MP200, MQ & ONVF (Profile S)	
	OUTPUTS	1 x HDMI, 1 x VGA (max. resolution 1080p)	
CODING	VIDEO & AUDIO	Enhanced H.264, H.264	
	MODES	Manual, Scheduled, Event-driven	
RECORDING	STORAGE	2 x SATA, internal	
	MAX. RECORDING PERFORMANCE	25fps per channel @ WQHD	
	DUPLICATED RECORDING	Yes	
EVENT	TYPES	External Alarm, Video Motion Detection, System Tamper, Power Interruption, HDD Failure	
	ACTIONS	Dial Back, Buzzer, Email Notification, Relay Control, Telemetry Preset	
	CONTROLS	Arm / Disarm, Security Switch, Power Interruption, System Tamper	
	ALARM INPUTS	4x on DVR or Alarm Inputs on Cameras	
	VIDEO MOTION DETECTION	Yes	
AUDIO	PRE / POST ALARM IMAGE SEQUENCE	Yes	
	INPUTS	1 x RCA on DVR or Audio Inputs on Cameras	
	OUTPUTS	1 x RCA on DVR or Audio Outputs on Cameras	
COMMUNICATION	NETWORK	100 / 1000 base-T	
	SURELINK	Yes	
	THROUGHPUT CONTROL	Yes	
	WEB SERVER	Built-in	
	JOYSTICK CONTROL	RX-KB05	
POWER	USB	3 x USB 2.0	2 x USB 2.0
	RATING	DC 12V, 4A	DC 48V, 3A
OPERATING ENVIRONMENT	AMBIENT TEMPERATURE	-10°C - 55°C	
	RELATIVE HUMIDITY	10% - 90% (no condensation)	
MECHANICAL DESIGN	DIMENSION	360mm x 242mm x 48mm	
	WEIGHT	1.8kg	2.0kg

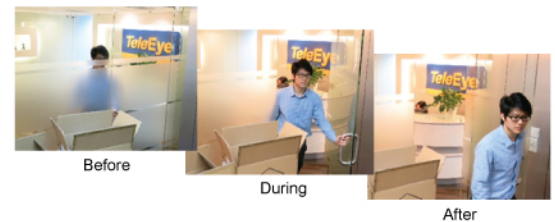
Recording Time Estimation for GN Series DVRs

RESOLUTIONS	Coding	WQHD	1080p	
		Enhanced H.264	Enhanced H.264	H.264
Setup				
25fps, 12TB, 8 Cameras		19 days	30 days	21 days
12fps, 6TB, 8 Cameras		17 days	26 days	19 days
5fps, 12TB, 16 Cameras		29 days	45 days	32 days

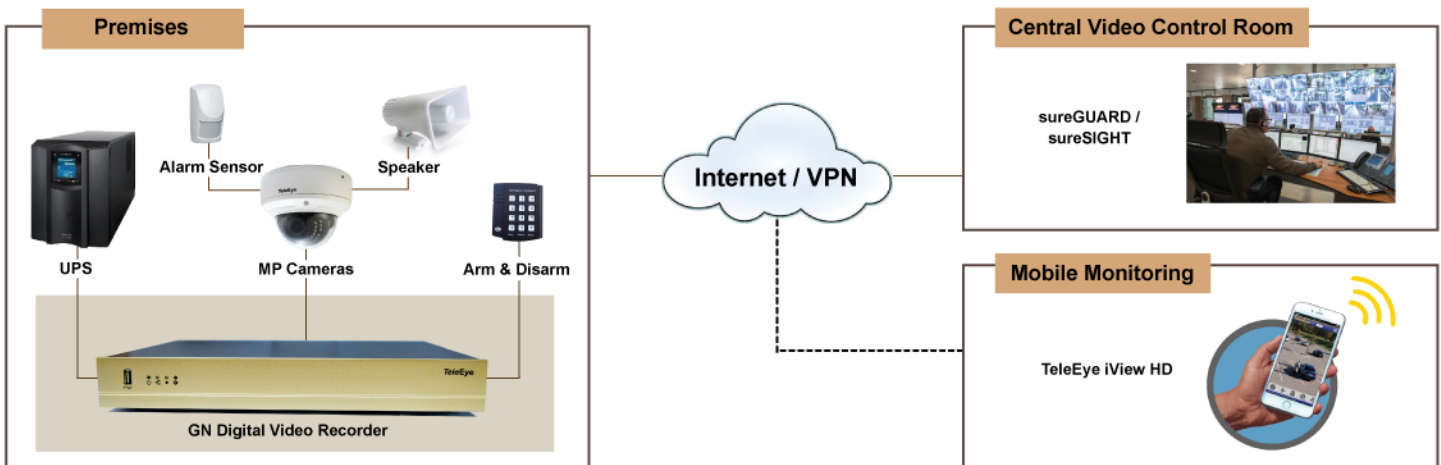
Remarks: (a) Recording data with Enhanced H.264 were measured using TeleEye MP400 Series IP cameras. (b) Recording data with Standard H.264 were measured using other H.264 IP cameras. (c) The video quality in GN was set to "excellent" in all above measurements. (d) The actual recording performance may vary subject to the real environment under surveillance.

Pre / Post Alarm Images

3 images will be sent for verification showing the events happening before, during and after an incident is detected.



Configuration



TeleEye Group
Signal Communications Ltd.
Int'l : (852) 2995 5996
HK : (852) 2995 5992
Email : info@TeleEye.com
Web : www.TeleEye.com

TeleEye Europe Ltd.
Tel: (44) 1628 776061
Email: ukinfo@TeleEye.com

TeleEye Lanka (Pvt) Ltd
Tel: (94) 11 2695652 4
Email: info@TeleEye.com.lk

TeleAy Video Çözümieri A.S.
Tel: (90) 212 343 35 72
Email: info@TeleAy.com.tr

TeleEye Bangladesh Ltd.
Tel: (88) 02 8627624
Email: info@TeleEye-bd.com

TeleEye Malaysia Sdn. Bhd.
Tel: (603) 5122 1398
Email: sales@TeleEye.com.my

TeleEye Philippines Inc
Tel: (63) 2 3650897
Email: contact@TeleEye.com.ph

TeleEye Digital Technology (Shenzhen) Co., Ltd
Tel: (86) 755-2671-2468
Email: info@TeleEye.com.cn

TeleEye (South Africa) (Pty) Ltd.
Tel: (27) 11 557 9200
Email: info@TeleEye.co.za