




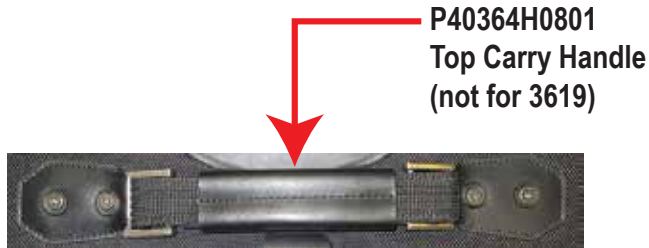


Parts Catalog



Travelpro® ⋮ The choice of flight crews
⋮ and frequent travelers.®

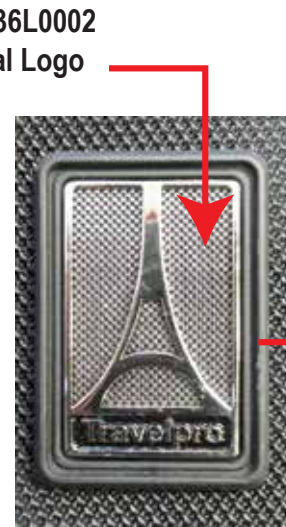
	Description	Part Number	Usage
	15mm Diameter Plastic Washer	PGEN0S0301	For Top/ Side Carry Handles
	11X4X30mm Crosshead Screw w/ Nylock Nut	PGEN0S4042 (SILVER)	For Top/ Side Carry Handles
	11X4X14mm Crosshead Screw w/ Nylock Nut	PGEN0S5042 (SILVER)	For frame on the side only
	20mm Diameter Flat Metal Washer	PGEN0S0200	For Top/ Side Carry Handle, Bottom Feet
	4X16mm Metal Screw w/Rubber Glue	PGEN0S0101	For Interior Use On Wheel Housing, Handle Bezel, Inner Bracket and Tubes



P40364H0801
Top Carry Handle
(not for 3619)



P4038H0801
Side Carry Handle
(Top and side carry handle for 3619)



P4036L0002
Metal Logo



P4036L0001 (black)
Logo Housing



P4036B0001
Removable shoulder strap

Rollboards and Rolling Overnighters

PGEN0F1101
Bottom Handle Cup with logo



P4036W1101
Left Wheel Housing



P4036W1201
Right Wheel Housing



bolts with thread lock



spring washer



P4036A1142
bolts with thread lock and spring washer



P9081W
Wheel



P40714Z0901

#10 Interlocking slider with logo pull



P4036Z0801

#10 Non-interlocking slider with logo pull



P4036Z0701

#10 Non-interlocking slider with logo rubber pull



P4036z0601

#8 Non-interlocking slider with logo rubber pull



P4036z0501

#8 Non-interlocking slider with logo pull



P4036z0401

#7 Non-interlocking slider with logo pull
(for 3604 ONLY)



PGEN0Z0142

#5 slider with generic pull
(for all interior zipper pull)

Item Number	Description
3600	Crew Cooler

Item Number	Description
3601	City Tote

Interior#5 slider with generic pull
See Page 5 for details

#10 Non-interlockin slider with logo pull
See Page 5 for details

Metal Logo and Logo Housing
See Page 3 for details.

#8 Non-interlockin slider with logo pull
See Page 5 for details

Shoulder strap
See Page 3 for details



#8 Non-interlockin slider with logo pull
See Page 5 for details



Metal Logo and Logo Housing
See Page 3 for details.

Item Number	Description
3602	Flight Tote

Item Number	Description
3603	DeluxeTote

#10 Interlockin slider with logo pull
See Page 5 for details

#8 Non-interlockin slider with logo pull
(on the back of the bag)
See Page 5 for details

#8 Non-interlockin slider with logo pull
See Page 5 for details

Metal Logo and Logo Housing
See Page 3 for details.

Interior #5 slider with generic pull
See Page 5 for details

Shoulder strap
See Page 3 for details

#8 Non-interlockin slider with logo pull
(on the side of the bag)
See Page 5 for details

#8 Non-interlockin slider with logo pull
(on the back of the bag)
See Page 5 for details

#10 Interlockin slider with logo pull
See Page 5 for details

#8 Non-interlockin slider with logo pull
See Page 5 for details

Metal Logo and Logo Housing
See Page 3 for details.

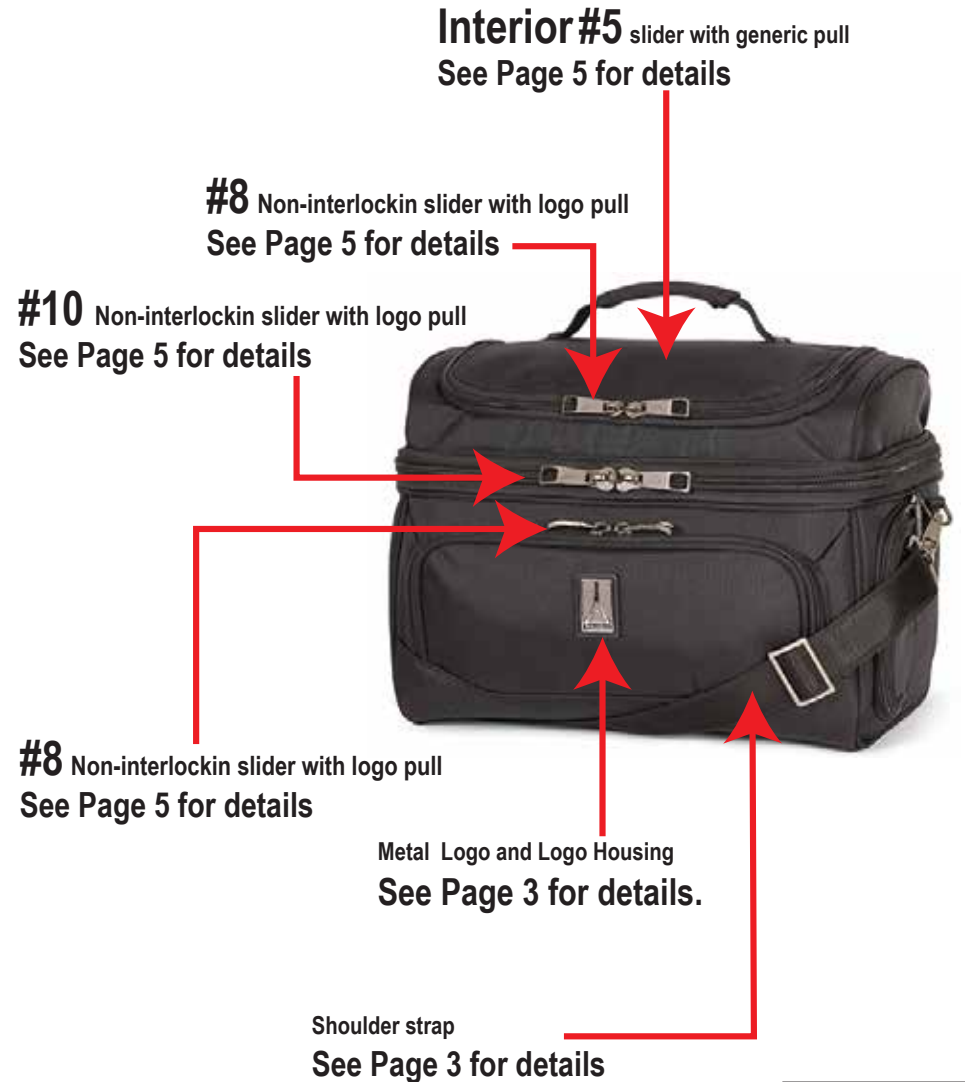
Shoulder strap
See Page 3 for details

Interior #5 slider with generic pull
See Page 5 for details

Item Number	Description
3603	DeluxeTote



Item Number	Description
3605	Large Crew Cooler



Item Number	Description
3608	Multi-Purpose Tote



Item Number	Description
3613	Horizontal Rolling Overnighter



Item Number	Description
3616	Vertical Rolling Overnighter

#10 Non-interlockin slider with logo pull
See Page 5 for details

#8 Non-interlockin slider with logo pull
See Page 5 for details

#8 Non-interlockin slider with logo pull
See Page 5 for details

#8 Non-interlockin slider with logo pull
See Page 5 for details

Interior #5 slider with generic pull
See Page 5 for details

P4036H0002
4 stages Retractable handle with handle bezel

Metal Logo and Logo Housing
See Page 3 for details.

Wheel Housing and Bottom handle cup
See Page 4 for details.

Item Number	Description
3619	19" Slim Rollaboard

Top ans Side Carry Handle are the same
See Page 3 for details

#10 Non-interlockin slider with logo pull
See Page 5 for details

#8 Non-interlockin slider with logo pull
See Page 5 for details

Interior #5 slider with generic pull
See Page 5 for details

P4036H0003
3 stages Retractable handle

Metal Logo and Logo Housing
See Page 3 for details.

Wheel Housing and Bottom handle cup
See Page 4 for details.

Rollaboard

Item Number	Description
3618	18" EXP-Rollaboard
3621	21" Rollaboard
3622	22" Rollaboard
3632	22" EXP-Rollaboard
3624	24" EXP-Rollaboard

Top Carry Handle
See Page 3 for details

P4036H2001
3 Stage retractable handle system
18" EXP-Rollaboard

#10 Interlocking slider with logo pull
(main zipper)
See Page 6 for details.

P4036H1001
3 Stage retractable handle system
21" Rollaboard

#10 Non-interlockin slider with logo pull
See Page 5 for details

P4036H1101
3 Stage retractable handle system
22" Rollaboard and 22" EXP-Rollaboard

Metal Logo and Logo Housing
See Page 3 for details.

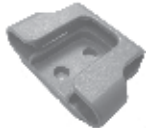
P4036H1301
2 Stage retractable handle system
24" EXP- Rollaboard

#10 Non-interlockin slider with logo pull
See Page 5 for details



P6011
Metal dog leash
inside front top
U-shape zipper pocket
(not for 3624)

P7135-01
Attachment clip base



Interior#5 slider with generic pull
See Page 6 for details

#10 Non-interlocking slider
with logo rubber pull
on the back zipper pocket
See Page 6 for details

Side Carry Handle
See Page 3 for details



P3115B
Attachment Strap
with buckle



P3115A
Attachment Strap
with metal J-hook

Wheel Housing Assembly,
Bottom Foot and Bottom handle cup
See Page 4 for details.

#8 Non-interlocking slider with logo rubber pull
on the expsion gusset (not for 3621 ans 3622)
See Page 6 for details

22" EXP-Pilot Rollboard

Item Number	Description
3623	22" EXP-Pilot Rollboard

Top Carry Handle
See Page 3 for details

P4036H1101
3 Stage retractable handle system
22" EXP-Pilot Rollboard

#10 Interlocking slider with logo pull
(main zipper)
See Page 6 for details.

P3170-01
Left edge protectors
(from the back view)

P3171-01
Right edge protectors
(from the back view)

#10 Non-interlockin slider with logo pull
See Page 5 for details

Metal Logo and Logo Housing
See Page 3 for details.



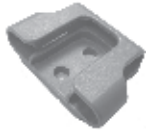
P
Metal dog leash
inside front top
U-shape zipper pocket
(not for 3624)



#10 Non-interlockin slider with logo pull
See Page 5 for details

#10 Non-interlocking slider
with logo rubber pull
on the back zipper pocket
See Page 6 for details

P7135-01
Attachment clip base



Interior#5 slider with generic pull
See Page 6 for details

Side Carry Handle
See Page 3 for details



P3115B
Attachment Strap
with buckle



P3115A
Attachment Strap
with metal J-hook

Wheel Housing Assembly,
Bottom Foot and Bottom handle cup
See Page 4 for details.

#8 Non-interlocking slider with logo rubber pull
on the expsion gusset
See Page 6 for details

Spinner

Item Number	Description
3661	21" EXP-Spinner

P4036H0501
3 Stage retractable handle system
21" EXP-Spinner

P6011
Metal dog leash
inside front top
U-shape zipper pocket
(not for 3624)



P40714F0801
Bottom Handle Cup ?
P40914F0801
Bottom Handle Cup ?

P4036W0701
Front Left Wheel Housing

P4036W0901
Front Right Wheel Housing



P4036W0901
Back Left Wheel Housing

P4036W0701
Back Right Wheel Housing



Top Carry Handle
See Page 3 for details

#10 Interlocking slider with logo pull
(main zipper)
See Page 6 for details.

#10 Non-interlockin slider
with logo pull
See Page 5 for details

Metal Logo and Logo Housing
See Page 3 for details.

#10 Non-interlockin slider
with logo pull
See Page 5 for details

#8 Non-interlocking slider
with logo rubber pull
on the expsion gusset
See Page 6 for details

#10 Non-interlocking slider
with logo rubber pull
on the back zipper pocket
See Page 6 for details

Side Carry Handle
See Page 3 for details

Interior #5 slider with generic pull
See Page 6 for details