



Quartz Watches

Congratulations. You are now the proud owner of a Speidel Quartz Watch. Before using your Speidel Quartz Watch, please read these instructions in this booklet carefully for its proper use and care. Please keep these instructions for reference.

www.speidel.com

TWO (2) YEAR INTERNATIONAL WARRANTY Your Speidel watch is warranted by Speidel Watches for a period of two (2) years from the original date of purchase under the terms and conditions of this warranty. The Speidel warranty covers materials and manufacturing defects. A copy of the receipt or dealer stamp in the warranty booklet is required for the proof of purchase.

During the warranty period the watch movement, hands and dial are the only components covered under this warranty. A covered component will be repaired or the watch will be replaced for free of re-pair charges, if it proves to be defective in material or workmanship under normal use.

In case of replacement, Speidel cannot guarantee that you will receive the same model watch. If your model is not available, a watch of equal value and similar style will be provided. The warranty for the replacement watch ends two (2) years from the date the replacement watch is received.

THIS WARRANTY DOES NOT COVER:

- Any defects in materials and workmanship of battery, case, crystal, strap or bracelet.

INSTRUCTIONS FOR SETTING YOUR SPEIDEL QUARTZ WATCH

TYPE A WATCHES

Pull the crown OUT to the first click and set the time. Then push the crown IN.

TYPE B WATCHES (WITH CALENDERS)

The date will change automatically once every 24 hours at midnight. Manual change can be made as follows:

To set the date: Pull the crown OUT to the first click and turn it CLOCKWISE. Then push the crown IN.

To set the time: Pull the crown OUT to the second click and set the time. Then push the crown IN.

TYPE C WATCHES (WITH DAY-DATE)

To set the day of the week: Pull the crown OUT to the first click and turn it CLOCKWISE.

To set the date: With the crown pulled OUT move the hands COUNTER-CLOCKWISE until the day you wish to set appears. The day calendar moves in your selected language continuously once set.

To set the time: Pull the crown OUT to the second click and set the time. Then push the crown IN.

- Damage resulting from improper handling, lack of care, accidents, or normal wear and tear.
 - Water damage unless marked water-resistant.
- This warranty is void if the watch has been damaged by accident, negligence of persons other than authorized Speidel sales or services agents, unauthorized service, or other factors not due to defects in materials or workmanship. The foregoing warranties and remedies are exclusive and in lieu of all other warranties, terms or conditions, express, implied or statutory, as to any matter whatsoever, including, without limitation, warranties of merchantability, fitness for a particular purpose, accuracy, satisfactory quality, title, and non-infringement, all of which are expressly disclaimed by Speidel. Speidel shall not be liable for incidental, consequential, indirect, special or punitive damages or liabilities of any kind arising out of or in connection with the sale or use of this product, whether based in contract, tort (including negligence), strict product liability or any other theory, even if Speidel has been advised of the possibility of such damages and even if any limited

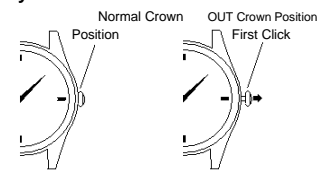
remedy specified herein is deemed to have failed of its essential purpose. Speidel's entire liability shall be limited to replacement or repair of the purchase price paid, at Speidel's sole option. Some countries, states, or in provinces do not allow the exclusion or limitation of implied warranties or the limitation of incidental or consequential damages so the above limitations and exclusions may be limited in their application to you. When implied warranties may not be excluded in their entirety, they will be limited to the duration of the applicable written warranty. This warranty gives you specific legal rights; you may have other rights that may vary depending on local law. Your statutory rights are not affected.

REQUESTING WARRANTY AND OTHER WATCH REPAIR

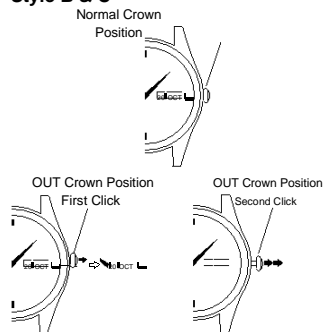
Should you require work under warranty, please send in your watch, a copy of your sales receipt and/

or the warranty repair coupon with description of the problem to the authorized international watch service center closest to you. You can also send your

Style A



Style B & C



THE CARE OF YOUR WATCH

The crystal oscillator in your watch is sealed in a vacuum capsule which is specially designed to protect against shock. Consequently, external conditions will have little effect on your watch in general use. However, remember that your watch contains a highly precise movement and to maintain its high accuracy, you should not subject the watch to violent shocks or extreme temperatures.

BATTERY CHANGE

The battery which powers your watch should last up to 2 years. If a depleted battery is left in the watch for a long time, it may cause a malfunction. Be sure to replace the battery as soon as possible. When replacing the battery, we recommend that you contact an AUTHORIZED SPEIDEL WATCH DEALER. A battery cross reference guide may be used to determine the correct battery.

watch, and a \$10.00 check or money order payable to Speidel to cover the cost of shipping and handling to: Speidel, 34 Branch Ave, Providence, RI 02904. Please wrap the watch securely in a small package, print our address and your name and return address and the RMA number on the package. For service work that is not covered under this warranty, the service center may perform the services you request for a charge dependent on watch style and type of work requested. These charges are subject to change.

Do not send original packaging, as it will not be returned. Speidel highly recommends you insure your parcel and adequately protect the watch during shipment. Speidel is not responsible for product lost or damaged during shipment. Any postage, insurance and shipping cost incurred in sending the watch for service are the responsibility of the owner.

For repairs of your Speidel watch we recommend

that you contact an authorized Speidel dealer or the authorized international watch service center closest to you.

LIMITED TWO-YEAR WARRANTY REPAIR COUPON

Name: (PLEASE PRINT)

Address:

City/State/ZIP:

Date Sold:

REPAIR COUPON TO BE DETACHED AND SUBMITTED WITH WATCH AND/OR ORIGINAL SALES RECEIPT WHEN WATCH IS RETURNED FOR ANY REPAIR COVERED BY THE WARRANTY.

34 Branch Ave Providence, RI 02904



www.speidel.com