



CLEMENTINE
FINE JEWELRY



Flower Pendant



Clementine Pendant



Garden Pendant



Modern Princess

Darling
COLLECTION

Darling COLLECTION

When I first decided to venture into designing jewelry, I thought to myself, "what could I actually create that has not already been done?"

I wanted to create jewelry that was both unique and fun to wear...designs that would be identifiable to me and to my company only.

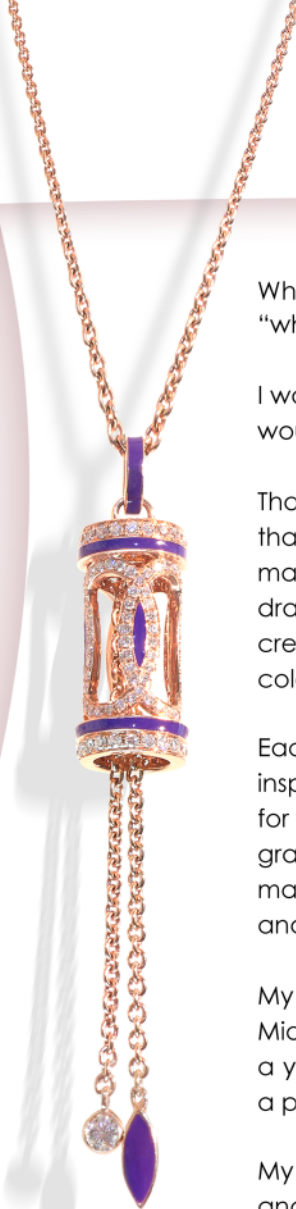
That is when I started thinking about creating a more dimensional pendant that would tell a story and have a special meaning. My first thought was of my maternal grandmother's garden, which became the inspiration behind my first drawing of my Garden pendant. After designing this pendant, I decided to create more inspired designs and embellish them all in brilliant diamonds and colorful enamel, and voila...my Darling Collection was born.

Each piece has a special meaning. My Garden and Flower pendants were inspired by my grandmother's garden, and a love that I share for flowers and for gardening. My Clementine pendant was inspired by my paternal grandmother, Clementine, who my company is lovingly named after. I spent many beautiful summers with her, and I always loved and admired her sweet and kind gentle heart.

My Modern Princess pendant was inspired by the young and beautiful Kate Middleton. I was so impressed by her confidence, grace and strength at such a young age, combined with her natural beauty...qualities that had captured a prince's heart.

My Darling Collection will continue to grow and expand as I walk through life and continue to be inspired by all of the beauty that surrounds us.

Liesa Berkson



Garden Pendant

The "Garden" pendant in my Darling Collection was the very first design that I created. It was inspired by the many beautiful summers that I spent in my maternal grandmother's garden. Her dedication, hard work and love for gardening was the inspiration behind it all.

Our 24" Garden pendant has hand-laid, green enamel on 18k yellow gold, with 0.67cts white diamonds.

MSRP: \$4,400



Flower Pendant

The "Flower" pendant was also inspired by my maternal grandmother's love for gardening. As a young girl, I use to love seeing and smelling the different varieties of roses and flowers that she lovingly tended to in her garden.

Our 24" Flower pendant has hand-laid, hot pink enamel on 18k rose gold, with 0.76cts white diamonds. MSRP: \$4,400



Clementine Pendant

The "Clementine" pendant was inspired by my paternal grandmother, Clementine, who my company is lovingly named after. She was a very kind and sweet lady, and her name inspired so many of my designs and collections as well.

Our 24" Clementine pendant has hand-laid, orange enamel on 18k rose gold, with 0.69cts white diamonds.

MSRP: \$4,400



Modern Princess

The "Modern Princess" pendant was inspired by the very young and beautiful Kate Middleton. She is an inspiration to so many throughout the world who dream of being a modern princess too. It doesn't hurt to dream a little bit!

24", hand-laid, purple enamel on 18k rose gold, 0.97cts white diamonds.

MSRP: \$5,600



Light Pink Flower Pendant

My "Flower" pendants were inspired by my maternal grandmother's love for gardening. As a young girl, I use to love seeing and smelling the different varieties of roses and flowers that she lovingly tended to in her garden.

Our 24" Light Flower pendant has hand-laid, pink enamel on 18k rose gold, with 0.76cts white diamonds.
MSRP: \$4,400



Star of David Pendant

The "Star of David" pendant is a beautiful and inspiring piece of jewelry that I created for those who believe in a power that is greater than ourselves.

Our 24" Star of David pendant has hand-laid, blue enamel on 18k white gold, with 0.78cts white diamonds.

MSRP: \$4,400





CLEMENTINE
FINE JEWELRY



AVAILABLE IN THE US & UK
clementinefinejewelry.com