

The cover features decorative curved lines in green and grey. A thick grey line curves from the top left towards the bottom right. A green line follows a similar path, positioned above and below the grey line. The background is white.

novostella

Smart Security Light User Guide

Contact Us

Have some issue? No worries! Please reach us via these channels.
Our customer services team is more than happy to help.



support@novostella.net



www.novostella.net



We are social. Get connected!



@Novostella_US



@novostella_lighting



@novostella_official



fb.com/novostella.fans



@Novostella_official

Smart Security Light User Guide

Thank you for ordering from Novostella. Set-up is easy and takes only a few minutes by following the instructions.

The smart light can work with both Amazon Alexa and Google Assistant. But the light after being installed will need to be paired with an app called 'Smart Life' first, and then the Smart Life app will need to be bound with either Amazon Alexa or Google Assistant to activate the voice control function.

Therefore, this user guide consists of four parts. Part one and two are fundamental set-up, while part three and four are alternatives. If you use Amazon Alexa for voice control, please follow instructions on part one, two and three. If you use Google Assistant for voice control, please skip part three, follow the instructions on part one, two and four. Part five is for general troubleshooting.

Part One - How to install the light ?	1 - 5
Part Two - How to pair the light to Smart Life app?	6 - 11
Part Three - How to control the light with Amazon Alexa?	12 - 14
Part Four - How to control the light with Google Assistant?.....	15 - 16

Part One - How to install the light?



Warning

- (1) Please check if the light and the parts are intact before installation.
- (2) Make sure to cut off power before installation.
- (3) Please do not place this light in corrosive conditions.
- (4) If there is any damage to the cord, please cut off the power and stop using it immediately.
- (5) Please do not retrofit the light within the warranty period.
- (6) To ensure the light works properly, please use the voltage indicated on the packing.

1. Parameters

P/N	NTA13BA-CW-US-1
Model	NTA13
Wattage	45W
Color	Black
Color Temperature	Warm White, Cool White 2700K-6500K dimmable
Max Luminous Flux	4200lm
Input Voltage	AC120V
Frequency	50/60Hz
Max Detection Range	180°
Max Detection Distance	60Ft(<24°C)
Life Expectancy	50000hrs
Working Temperature	-20°C-40°C

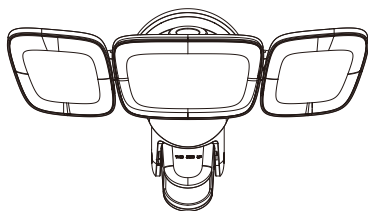
Wireless Control Specification:

Wireless Frequency Range: 2.412-2.472 GHz

Wireless Communications Protocol: IEEE 802.11b/g/n

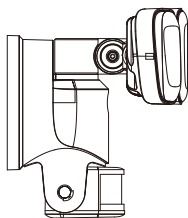
Wireless Conducted Power: 13-16 dBm

2. Components

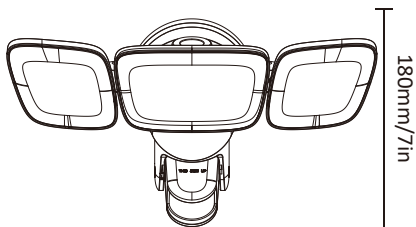


-  1 Screw head
-  2 Screws
-  3 Wire Connectors
-  Mounting Bolt
-  Mounting Strap
-  Gasket

3. Dimension



155mm/6in



345mm/14in

180mm/7in

Weight: 2lb/0.9kg

4. Installation

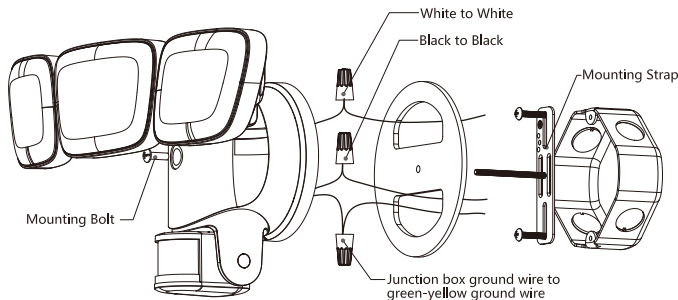
Safety Information:

- This product must be installed in accordance with the applicable installation code by a person familiar with the construction and operation of the product and the hazards involved.
- Turn power OFF before installing.
- Install the height of the light fixture not lower than 5.5ft, to avoid disturbance from small animals on the ground within detection range.
- The sensor should be installed away from air conditioning, refrigerators, stoves and other sensitive to changes in air temperature, as well as windows and other strong hot air flow places, so as not to cause wrong action.
- When the air temperature is close to a person's body heat, the detection sensitivity will be reduced.

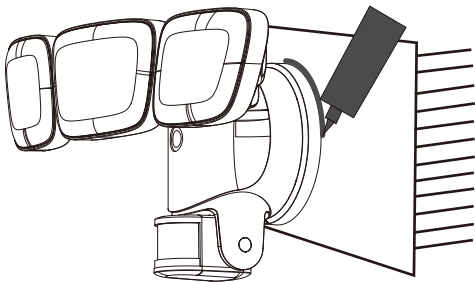
Installations:

For best performance, mount the light about 6.5-8ft above the ground.

If the light is mounted higher than 8ft, aiming the sensor down will reduce the coverage distance.



1. Turn off the power.
2. Install the mounting strap as shown with two screws that fit your junction box.
3. Tighten the wires with wire connectors. L should be connected to Black wire, N should be connected to White wire.

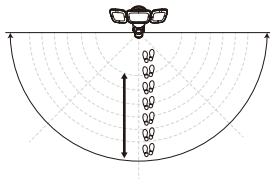


4. After mounting the light, apply silicone sealant completely around the perimeter of the cover plate where the back of the cover plate meets the mounting surface. Silicone sealant prevents water from seeping into the junction box.

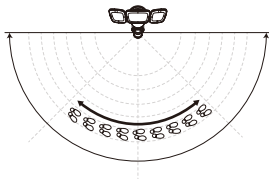
Note:

The motion sensor is less sensitive if in a radial movement. As shown below (picture 1).

The motion sensor is more sensitive if in a lateral movement. As shown below (picture 2).



Picture 1



Picture 2

Part Two – How to pair the light to Smart Life app?



Before starting the pairing, please make sure to turn on the Bluetooth and WiFi on your phone.

The smart light only supports 2.4GHz WiFi network, not 5.0GHz. Please make sure your working network is 2.4GHz, and your phone is connected to it. If your WiFi router supports both 2.4GHz and 5.0GHz, please separate the two frequency bands in the router settings, and select the 2.4GHz for connection.

Step A : Smart Life app installation

Please choose either way below to download and install the app.

(1) As per your phone system, choose the QR code to scan.



iOS



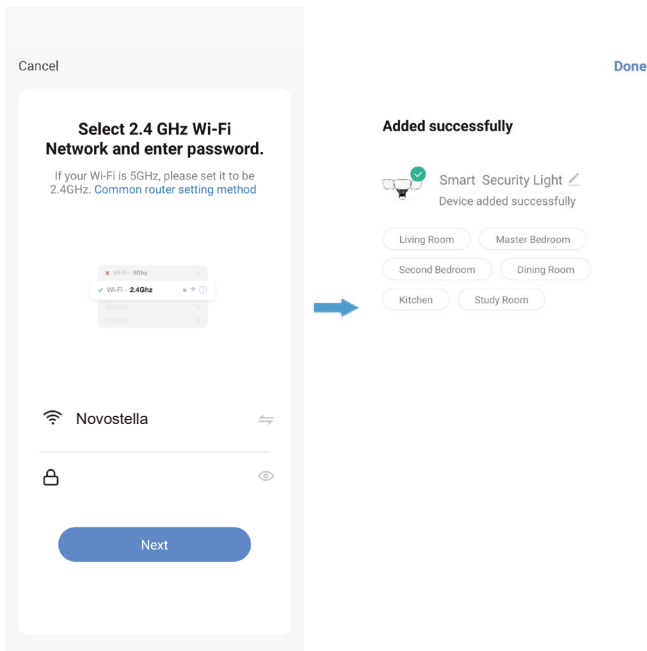
Android

(2) Search keyword 'Smart Life' in Apple Store or Google Play.

Step B: Create an account on Smart Life and login.

Note: Please keep your account and password in mind for Alexa or Google Assistant App pairing later.

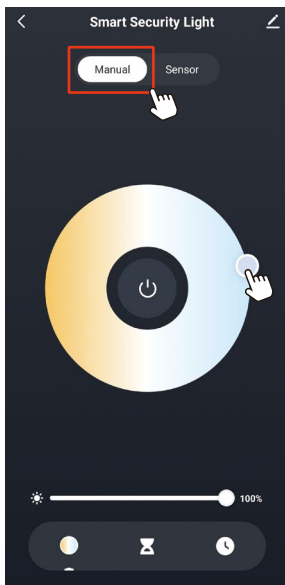
3. Choose your WiFi network, enter your password, and tap the 'Next' button. Then give a name to the light and tap the 'Done' button.



Step D : Give a name to the light.

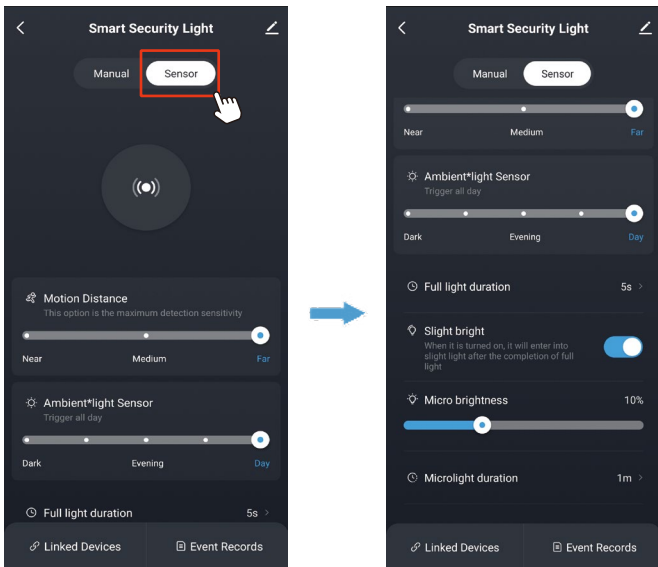
- A simple name is recommended for easier voice recognition with Alexa or Google Assistant.
- The name given to the light will be the same for voice control on Alexa or Google Assistant. For example, the light is named 'smart light' on this user guide.

Step E : The named light will be shown on the app homepage. Now you can control the light (turn on/off, change colors, adjust brightness ect) with Smart Life on the Manual mode setting.



Step F: Sensor mode setting

- (1) Click the "Sensor" button to enter the Sensor mode setting
- (2) You can set multiple functions of the sensor light here: sensor distance, day and night control setting, lighting time setting, lighting mode setting.

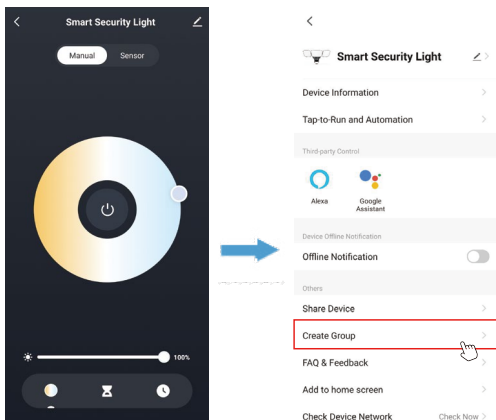


Note: To control the light with Amazon Alexa, please read Part Three. To control the light with Google Assistant, please read Part Four directly.

How to group the downlights?

Make sure all the lights have been paired to “smart life” app, then group the lights by following these steps.

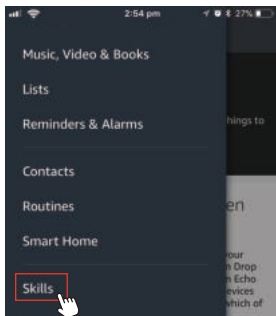
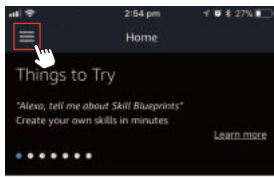
1. Choose any light on the app, click the edit button on the top right corner, then click “Create Group” .
2. Choose the lights you want to group from the device list and rename the group.



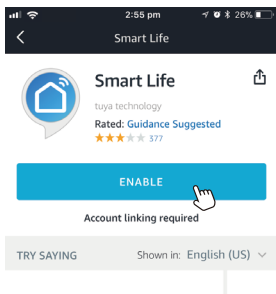
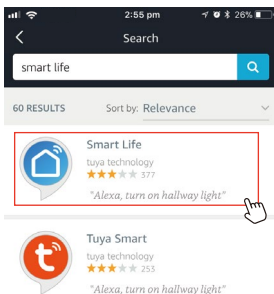
Part Three – How to control the light with Amazon Alexa?

Please make sure that your Alexa app is connected to Echo, and both work well under your WiFi network.

Step A : Log in your Alexa App, tap top left corner, and tap ‘Skills’.



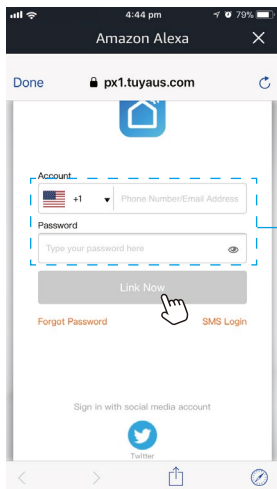
Step B: Type ‘Smart Life’, find ‘Smart Life’ from the search result and tap it to enable the skill.



Step C : Enter your Smart Life App account and password. Tap 'Link Now', then tap 'Authorize' on the next page to bind Smart Life account to Alexa.

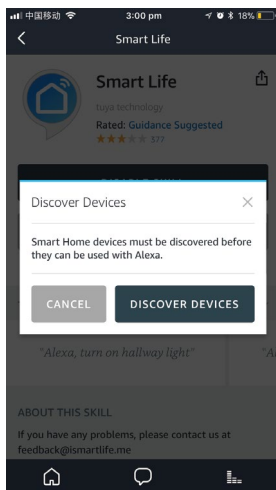
Step D : When your Smart Life account is bound to Alexa, tap 'DISCOVER DEVICES' to detect the light.

Step C



Same account and password
as Smart Life App

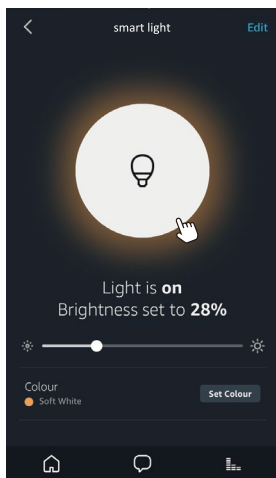
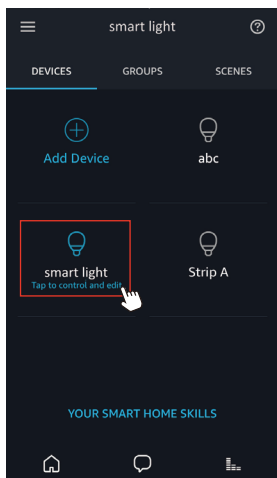
Step D



Step E : When the named light is paired to Alexa from Smart Life, it will show on the device page (see the 'smart light' example).

Step F : Now you can control the light with Alexa App on the setting page. To turn on or off the light, simply tap the bulb icon.

Step G : You can also voice control the light with Alexa by giving these commands: “Alexa, turn on ‘device name’ ”, “Alexa, set ‘device name’ to ‘color’ ”, “Alexa, set ‘device name’ to ‘number’ ”. Device name is the one you give to the light. The light is named ‘smart light’ in this user guide. For example, “Alexa, turn on ‘smart light’ ”, etc.



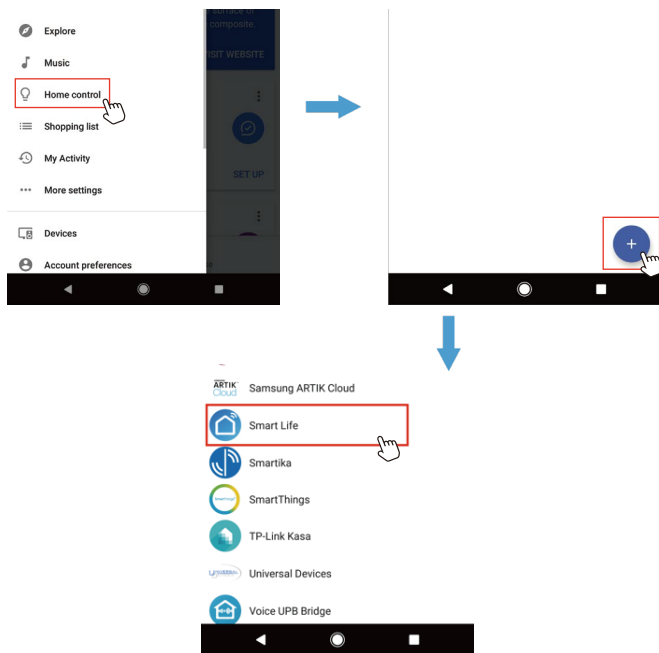
Note: To control the light with Google Assistant, please continue to read Part Four.

Part Four – How to control the light with Google Assistant?

Step A : Login Google Assistant App, tap 'Home Control' on the left side bar page.

Step B : Tap '+' button on the bottom right to enter next page.

Step C : Find 'Smart Life' from side bar list.

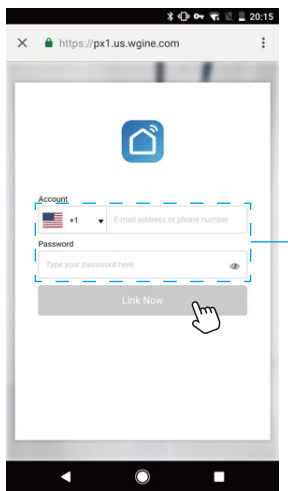


Step D : Enter your Smart Life App account and password to bind Smart Life account to Google Assistant.

Step E : You will find the named light shows on the Home Control page. Now you can control the light on Google Assistant App, or voice control it by giving these commands: “ok Google, turn on ‘device name’ ”, “ok Google, set ‘device name’ to ‘color’ ”, “ok Google, set ‘device name’ to ‘number’ ”.

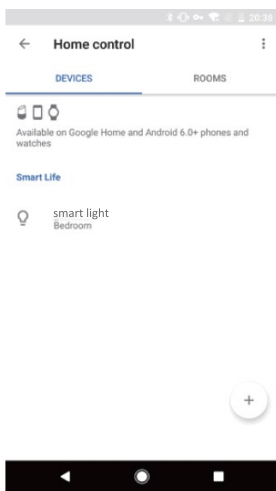
Device name is the one you give to the light. The light is named ‘smart light’ in this user guide. For example, “ok Google, turn on ‘smart light’ ”.

Step D



Same account and password
as Smart Life App

Step E



FCC ID: 2AWONNTA13

Federal Communication Commission(FCC)Statement for Users Warning:
Changes or modifications not expressly approved by the party responsible for compliance could void the user's authority to operate the equipment.

This device complies with part 15 of the FCC Rules.

Operation is subject to the following two conditions:

- (1) This device may not cause harmful interference, and
- (2) this device must accept any interference received, including interference that may cause undesired operation.

This equipment complies with FCC radiation exposure limits set forth for an uncontrolled environment.

NOTE: This equipment has been tested and found to comply with the limits for a Class B digital device, pursuant to part 15 of the FCC Rules. These limits are designed to provide reasonable protection against harmful interference in a residential installation. This equipment generates, uses and can radiate radio frequency energy and, if not installed and used in accordance with the instructions, may cause harmful interference to radio communications.

However, there is no guarantee that interference will not occur in a particular installation. If this equipment does cause harmful interference to radio or television reception, which can be determined by turning the equipment off and on, the user is encouraged to try to correct the interference by one or more of the following measures:

- Reorient or relocate the receiving antenna.
- Increase the separation between the equipment and receiver.
- Connect the equipment into an outlet on a circuit different from that to which the receiver is connected.
- Consult the dealer or an experienced radio/TV technician for help.

The light source of this luminaire is not replaceable, when the light source reaches its end of life the whole luminaire shall be replaced.

novostella

E-manual



Step 1: Scan the QR code

Step 2: Click E-manual PDF file

Step 3: Read file online or download



Go paper-free, make life easier, and do something good for the environment.



FC MADE IN CHINA