

The background features decorative curved lines in green and grey. A thick grey curve starts from the top left and curves towards the bottom right. A thinner green curve follows a similar path, positioned slightly below the grey one. Another green curve is visible at the bottom right corner.

novostella

Smart LED Flood Light User Guide

Contact Us

Have some issue? No worries! Please reach us via these channels.
Our customer services team is more than happy to help.



support@novostella.net



www.novostella.net



We are social. Get connected!



@Novostella_US



@novostella_lighting



@novostella_official



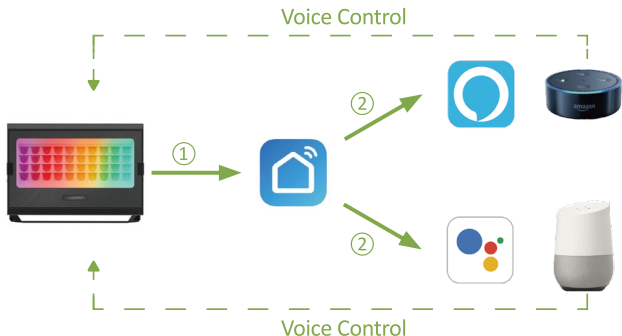
fb.com/novostella.fans



@Novostella_official

Smart LED Flood Light User Guide

Before installation, let's know how the whole thing works.



Step One: Install the smart flood light.

Step Two: Fundamental set-up - Connect smart LED flood light to Smart Life App.

Step Three & Four: Optional set-up - Connect Smart Life App to Amazon Alexa or Google Assistant.

After completing Step Two, you can remote control the light on Smart Life App. After completing Step Three and Four, you can voice control the light with Alexa or Google Assistant. This manual consists of Four parts.

Part One - How to install the light ?	3 - 7
Part Two - How to pair the light to Smart Life app?	8 - 12
Part Three - How to control the light with Amazon Alexa?	13 - 15
Part Four- How to control the light with Google Assistant?	16 - 17

Part One - How to install the light?

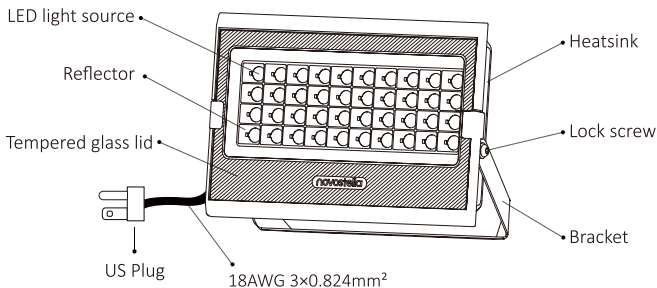
Warning

- (1) Please check if the light and the parts are intact before installation.
- (2) Make sure to cut off power before installation.
- (3) Please do not place this light in corrosive conditions.
- (4) If there is any damage to the cord, please cut off the power and stop using it immediately.
- (5) Please do not retrofit the light within the warranty period.
- (6) To ensure the light works properly, please use the voltage indicated on the packing.

1. Parameters

Model	NTF89
Wattage	60W
Input Voltage	AC120V
Color	RGB, Rainbow Color
Frequency	50/60Hz
Waterproof Rating	IP66
Beam Angle	120°
Working temperature	-20~40°C

2. Components



Note: Cord - type Y attachment.

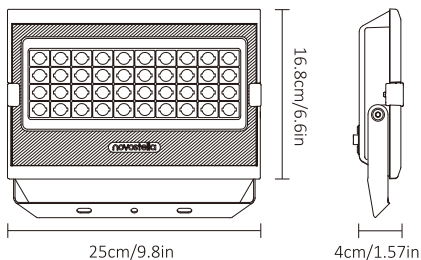
For type Y attachment: If the external flexible cable or cord of this luminaire is damaged, it shall be exclusively replaced by the manufacturer or his service agent or a similar qualified person in order to avoid a hazard.

FCC ID: 2AWONNTF89

This device complies with part 15 of the FCC rules. Operation is subject to the following two conditions: (1) this device may not cause harmful interference, and (2) this device must accept any interference received, including interference that may cause undesired operation.

This equipment complies with FCC radiation exposure limits set forth for an uncontrolled environment. This equipment should be installed and operated with minimum distance of 20 cm between the radiator and your body. This transmitter must not be co-located or operating in conjunction with any other antenna or transmitter.

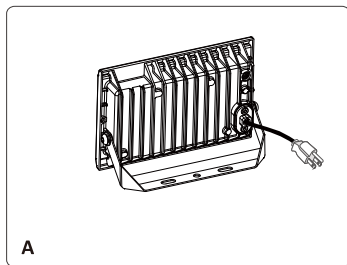
3. Dimension



Weight: 2.97lb/1.35kg
Max Projected Area: 50m²

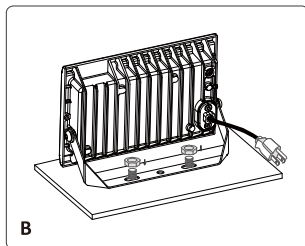
4. Installation

Step A: According to the spacing of two screw bits on the bracket, drill two holes on the mounting panel.

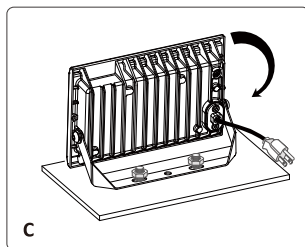


Note: Maximum mounting height is over 5m.

Step B: Aim the bracket at the holes and fix it with two bolts.

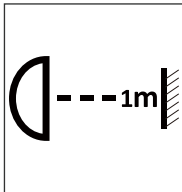


Step C: Adjust the lighting direction up or down as per your need and plug in to power the light on.



Note:

01



01 Make sure that the distance between the light and the object being lit is more than 1 meter, so as to avoid high temperature caused by short distance.

The light source of this luminaire is not replaceable.

Limitation of Indoor and Outdoor Use

- (1) This light is waterproof and damp proof. It is protected against the rain, but it cannot be immersed in water.
- (2) The mounting position of this light should be able to bear at least 10 times as heavy as the light.
- (3) This light should be used in condition that is good for heat dissipation. Its working temperature should be less than 45°C Too high the working temperature will cause serious lumen depression and affect lifespan of the light.

Part Two – How to pair the light to Smart Life app?



Before starting the pairing, please make sure to turn on the Bluetooth and WiFi on your phone.

The smart light only supports 2.4GHz WiFi network, not 5.0GHz. Please make sure your working network is 2.4GHz, and your phone is connected to it. If you WiFi router supports both 2.4GHz and 5.0GHz, please separate the two frequency bands in the router settings, and select the 2.4GHz for connection.

Step A : Smart Life app installation

Please choose either way below to download and install the app.

(1) As per your phone system, choose the QR code to scan.



iOS



Android

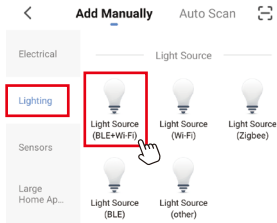
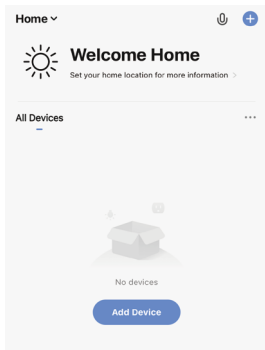
(2) Search keyword 'Smart Life' in Apple Store or Google Play.

Step B: Create an account on Smart Life and login.

Note: Please keep your account and password in mind for Alexa or Google Assistant App pairing later.

Step C : Add the light to Smart Life App

1. Tap '+' button on top right corner to add devices. Tap 'Lighting', then choose 'PIR Light (BLE+Wi-Fi)' to add the lights.



2. Power on the light with your own switch. Repeatedly turn on-off-on-off-on-off-on switch (3 times) to activate the light into rapid blinking status (about 0.5s per blink). Please make sure to keep an interval over 2 seconds between each turn-on and turn-off. Then click the 'Next' button on this page. Find the lighting devices and click '+'.

Reset the device first.

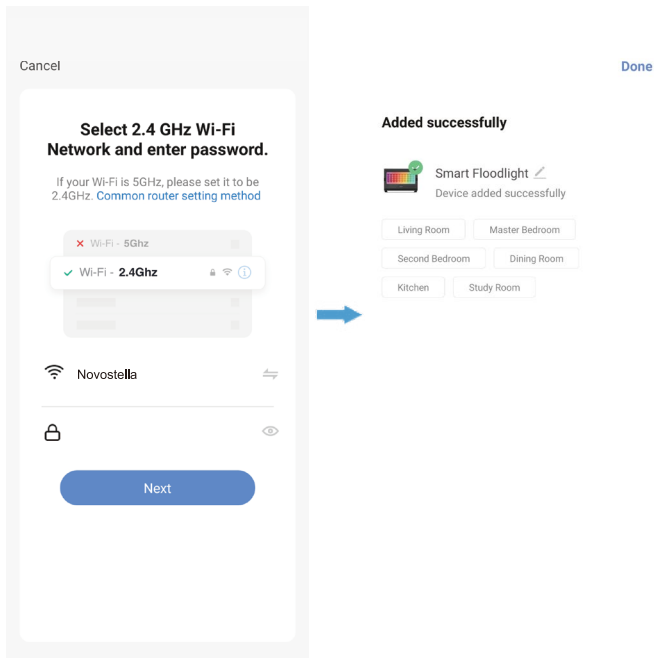
If the light is blinking rapidly, pls skip the reset step:

- ① Power on the device;
- ② Turn on-off-on-off-on (Subject to the user manual);
- ③ Ensure the light is blinking rapidly;

Note: please complete the network distribution within 3 minutes after resetting the device.



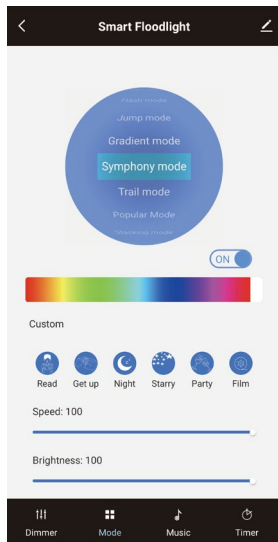
3. Choose your WiFi network, enter your password, and tap the 'Next' button. Then give a name to the light and tap the 'Done' button.



Step D : Give a name to the light.

- A simple name is recommended for easier voice recognition with Alexa or Google Assistant.
- The name given to the light will be the same for voice control on Alexa or Google Assistant.

Step E : The named light will be shown on the app homepage. Now you can control the light (turn on/off, change colors, adjust brightness ect) with Smart Life on the setting page.

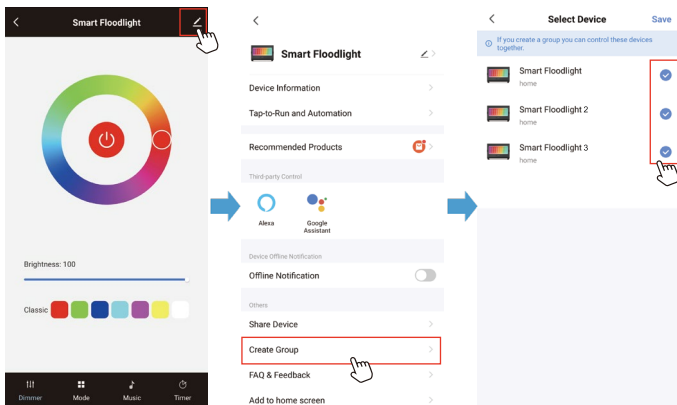


How to group the downlights?

Make sure all the lights have been paired to “smart life” app, then group the lights by following these steps.

1. Choose any light on the app, click the edit button on the top right corner, then click “Create Group” .
2. Choose the lights you want to group from the device list and rename the group.

Now you can control the lights and sync with the music, the colors will be synchronized in the group.

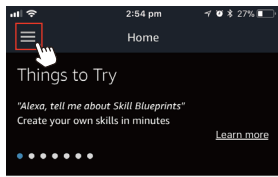


Part Three – How to control the light with Amazon Alexa?



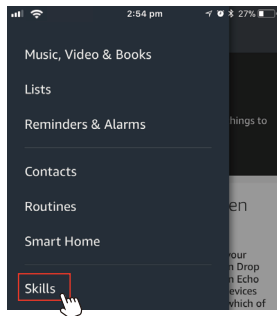
Please make sure that your Alexa app is connected to Echo, and both work well under your WiFi network.

Step A : Log in your Alexa App, tap top left corner, and tap 'Skills'.

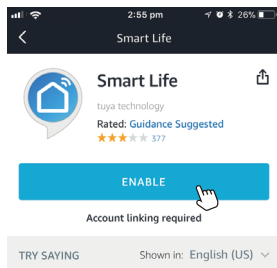
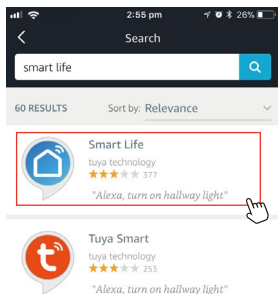


Your Alexa settings have been updated

Household Drop In was enabled from one of your Echo devices or from the Alexa app. The opt-in Drop In feature lets you automatically connect to an Echo device for a voice or a video chat. Your Echo devices with a screen and the Alexa app will indicate which of

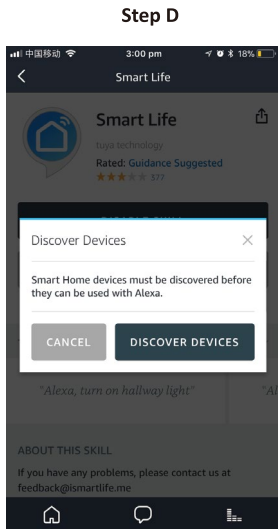
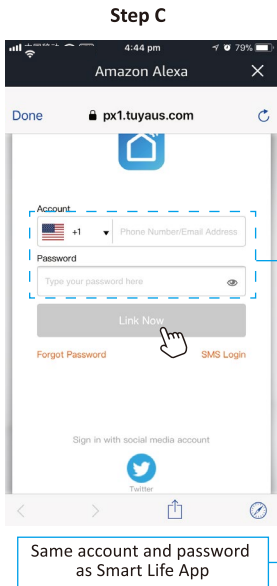


Step B : Type 'Smart Life', find 'Smart Life' from the search result and tap it to enable the skill.



Step C : Enter your Smart Life App account and password. Tap ‘Link Now’, then tap ‘Authorize’ on the next page to bind Smart Life account to Alexa.

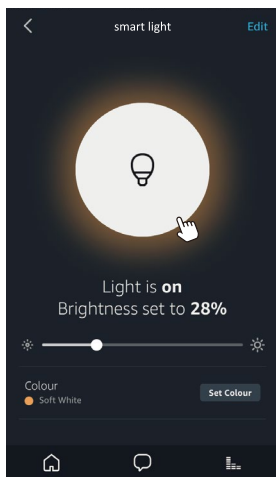
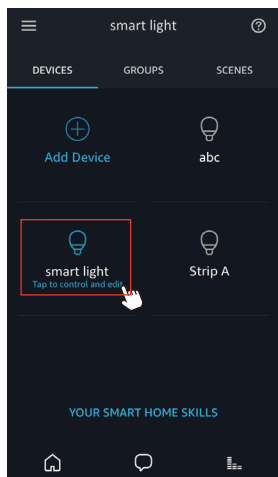
Step D : When your Smart Life account is bound to Alexa, tap ‘DISCOVER DEVICES’ to detect the light.



Step E : When the named light is paired to Alexa from Smart Life, it will show on the device page (see the ‘smart light’ example).

Step F : Now you can control the light with Alexa App on the setting page. To turn on or off the light, simply tap the bulb icon.

Step G : You can also voice control the light with Alexa by giving these commands: “Alexa, turn on ‘device name’ ”, “Alexa, set ‘device name’ to ‘color’ ”, “Alexa, set ‘device name’ to ‘number’ ”. Device name is the one you give to the light. The light is named ‘smart light’ in this user guide. For example, “Alexa, turn on ‘smart light’ ”, “Alexa, set ‘smart light’ to ‘blue’ ” etc.



Note: To control the light with Google Assistant, please continue to read Part Four.

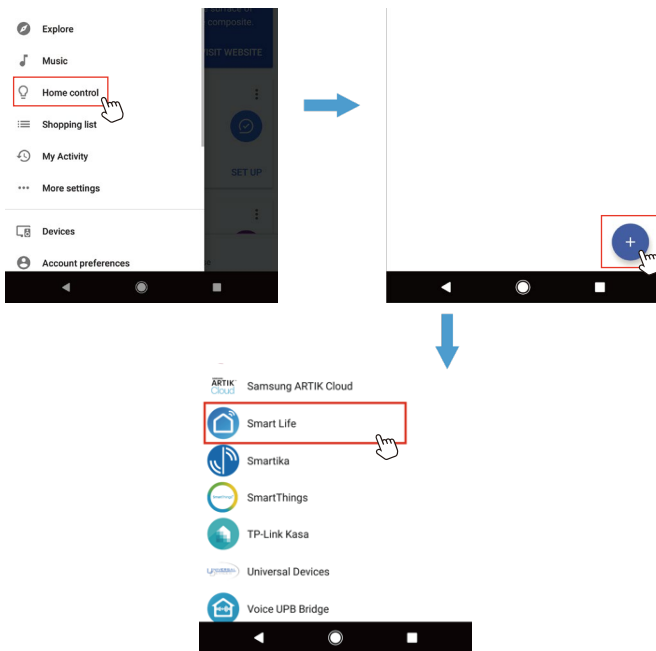
Part Four – How to control the light with Google Assistant?



Step A : Login Google Assistant App, tap ‘Home Control’ on the left side bar page.

Step B : Tap ‘+’ button on the bottom right to enter next page.

Step C : Find ‘Smart Life’ from side bar list.

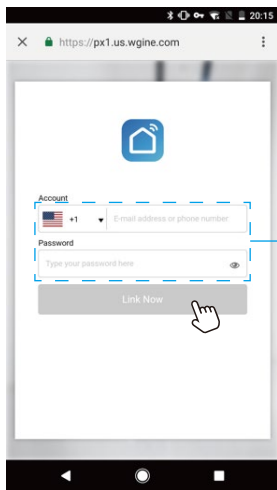


Step D : Enter your Smart Life App account and password to bind Smart Life account to Google Assistant.

Step E : You will find the named light shows on the Home Control page. Now you can control the light on Google Assistant App, or voice control it by giving these commands: “ok Google, turn on ‘device name’ ”, “ok Google, set ‘device name’ to ‘color’ ”, “ok Google, set ‘device name’ to ‘number’ ”.

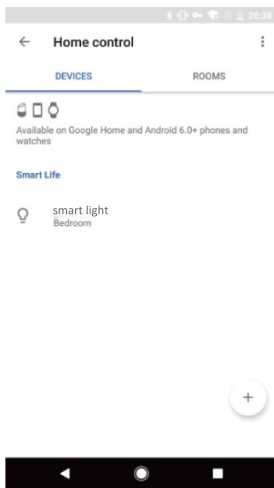
Device name is the one you give to the light. The light is named ‘smart light’ in this user guide. For example, “ok Google, turn on ‘smart light’ ”, “ok Google, set ‘smart light’ to ‘blue’ ” etc.

Step D



Same account and password
as Smart Life App

Step E



novostella

E-manual



Step 1: Scan the QR code

Step 2: Click E-manual PDF file

Step 3: Read file online or download



Go paper-free, make life easier, and do something good for the environment.

RoHS IP66  **CE** 

MADE IN CHINA