

Create Stellar Lighting
Experience

novostella

LED RGB Light Strip User Guide

LED RGB Light Strip User Guide

THANK YOU for choosing Novostella. To optimize user experience, please use the product according to the following instructions.

Warning

- (1) Winding lighting is prohibited, as it affects heat dissipation and might cause dangers.
- (2) Please unroll the light strip from the plate before lighting it up.
- (3) This light strip can only work with ONE power adapter in a series connection of 32 meters maximally.
- (4) Please check if the light strip and the parts are intact before using them.
- (5) Please make sure that the power supply is turned off before installation.
- (6) Please use the attached power adapter only, to ensure that the light works properly.
- (7) Please do not use this light in the open air or under humid environment.

1. Specification

SKU	NTS32-RGB-US-NF
Model Number (Power Adapter)	CW2401750US
Wattage	42W
Color	RGB
Total Length	105ft / 32m
LED Type	S050
LED Quantity	960 LEDs
Input Voltage	100-240V AC
Frequency	50/60Hz
Working Voltage	24V
Working Temperature	-25°C~40°C
Restriction	Indoor Use Only
Battery Type	CR2025 / CR2032 (for RF remote controller)
Package Includes	Light Strip x 2, RF Remote Controller x 1, Power Adapter x 1, LED Signal Receiver x 1, Mounting Bracket x 24, Extension Cord x 1, Wire Clip x 6

2. Components

Light Strip x 2



Mounting Bracket x 24



Wire Clip x 6

Power Adapter x 1



RF Remote Controller x 1



LED Signal Receiver x 1



Extension Cord x 1

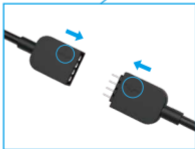


Note: Power Adapter Cord - type Z attachment. For type Z attachment: The cable or cord cannot be replaced without breaking or destroying the luminaire.

LED Signal Receiver

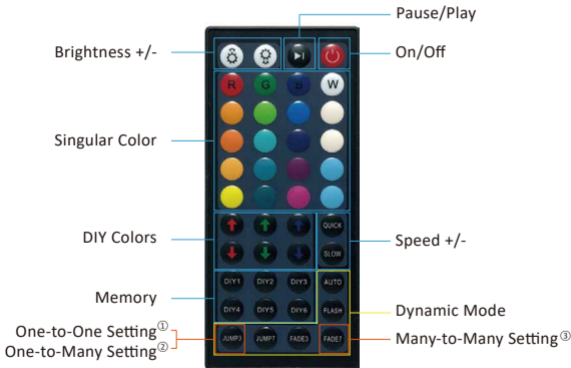


Access Port for 24V DC
Power Adapter



4-Pin Access Port for
Light Strip

RF Remote Controller



Dynamic Mode

There are 6 preset dynamic modes, and their speed can be adjusted with the "QUICK" or "SLOW" button.

1. JUMP3: Flash and loop among 3 colors (Red, Green, Blue).
2. JUMP7: Flash and loop among 7 colors (Red, Green, Blue, Yellow, Purple, Cyan, White).
3. FADE3: Fade and loop among 3 colors (Red, Green, Blue).
4. FADE7: Fade and loop among 7 colors (Red, Green, Blue, Yellow, Purple, Cyan, White).
5. FLASH: Flash on white color only.
6. AUTO: Loop among the above 5 dynamic modes. The FLASH mode (white color only) repeats 20 times, while the rest four modes repeats 4 times in each loop.

Three Settings

There are three flexible settings for the remote controller(s) to control the light strip(s) as per your lighting project, One-to-One Setting, One-to-Many Setting and Many-to-Many Setting. You can choose either which light strip and how many light strips one controller controls, or which controller and how many controllers control the light strip(s).

- ① **One-to-One Setting:** One remote controller can only control one light strip. Turn on the remote controller and power on the LED Signal Receiver of the light strip. During the first 5 seconds, immediately long press the bottom left button on the remote controller till the strip light blinks. Then the 'One-to-One Setting' is done. One-to-One Setting is the factory default.
- ② **One-to-Many Setting:** If you want to control many light strips with one remote controller, you could choose the 'One-to-Many' Setting. Turn on the remote controller and power on all LED Signal Receivers of the light strips. During the first 5 seconds, immediately long press the bottom left button on the remote controller till the strip lights blink. Then the 'One-to-Many Setting' is done.

③ **Many-to-Many Setting:** If you have many light strips and remote controllers, and hope that any of the controller can control all the light strips, you could choose the 'Many-to-Many' Setting. Turn on each remote controller and power on its LED Signal Receiver. During the first 5 seconds, immediately long press the bottom right button on the remote controller till the strip light blinks.

How to DIY colors?

This light strip is made of RGB LEDs, which means there are three colors (red/green/blue) on one LED. All lighting colors are made by changing the ratio of red, green and blue on the LED.

e.g. Red + Green = Yellow Lighting

Red + Blue = Purple Lighting

Green + Blue = Cyan Blue Lighting

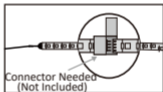
Firstly, choose and press one button from DIY1 to DIY6 on the RF controller, for instance, the DIY1 button. Secondly, press \uparrow or \downarrow button to increase (\uparrow) or decrease (\downarrow) the ratio of red, green and blue on the LED, so as to create different lighting colors. Then the specific DIY color lighting will be saved on the DIY1 button (the button you choose on the first step). Next time when you want to use this DIY color lighting, simply press DIY1 button for a quick access.

3. Installation

1. How to cut the LED strip?

Before cutting the LED strip, please keep these in mind.

- (1) Once the strip is cut, an extra connector is needed for reconnection, otherwise the rest part being cut can not work. The connector is not included in the package. You may contact the seller for the connector details.
- (2) Double confirm the length for installation before making the cut.
- (3) Cut the strip along the marks.



2. How to install the LED strip?

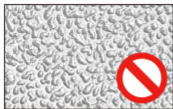
- (1) Choose an even and smooth surface.



NO Knitted or Wool Fabrics



NO Plastered Wall



NO Rough Plastic Surface

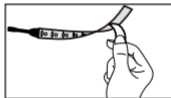


NO Frosted Glass

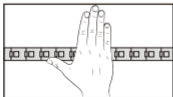
- (2) Sweep the dust off the surface.



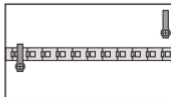
- (3) Tear the back sheet.



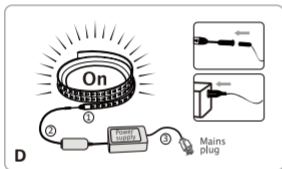
- (4) Press the strip with force.



- (5) Fasten the strip with clips, if applicable. (It is recommended to use the clip every 0.5m.)



- D** Connect the light strip ① to controller cable ②, and then connect controller cable to power adapter ③. Plug the adapter into the socket and turn on the light strip by pressing 'ON' button on the RF remote controller.



Note:

- (1) If the strip can't light up after the installation, please check whether the joints are connected correctly.
- (2) Please make sure to turn off the power supply during routine maintenance.
- (3) To avoid any damage to the strip, please do not use chemical solvent during routine maintenance.

Contact Us

Have some issue? No worries! Please reach us via these channels.
Our customer services team is more than happy to help.

 support@novostella.net

 fb.com/novostella.fans

 Scan to Message Now! 

 www.novostella.net



Manufacturer: Shenzhen Ustellar Technology Ltd.

Address: Rm.201, A Bldg., No. A Qianhai 1st Rd., Shen'gang Cooperation Zone,
Qianhai, Shenzhen, CHINA 518000

novostella



support@novostella.net



fb.com/novostella.fans



www.novostella.net

FC RoHS   