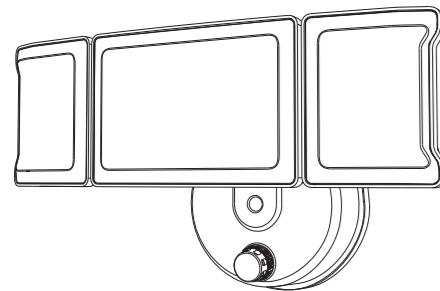


# Olafus®

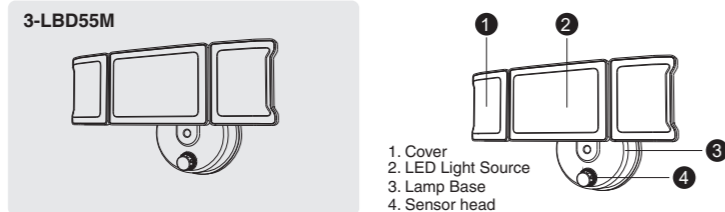


## LED DUSK TO DAWN WALL LIGHT

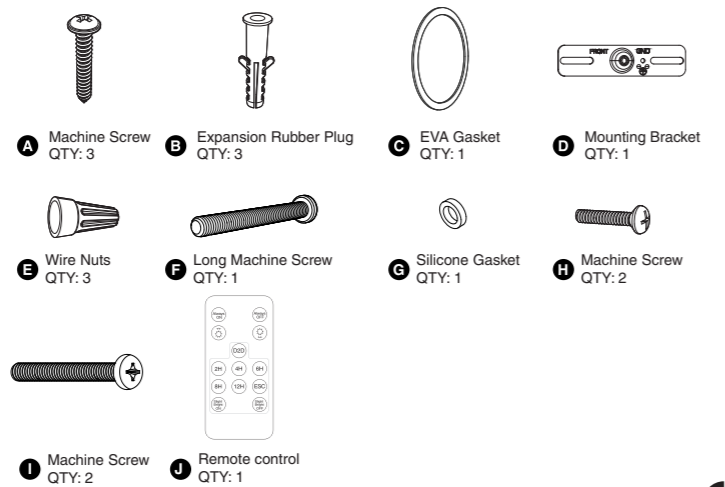
Product Manual

MODEL: 3-LBD55M

### COMPONENTS AND STRUCTURE



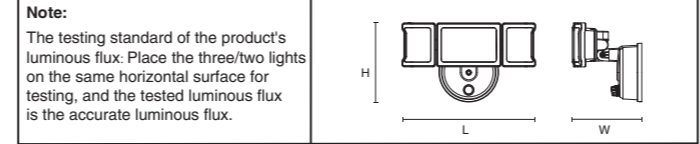
### PARTS LIST



### SPECIFICATIONS

LED WALL LAMP	
Model	3-LBD55M
Input Voltage	100-120V ~ 60Hz
Input Current	0.52A
Rated Power	60W
Luminous Flux	6000lm
CCT	6500K
CRI	≥80
Power Factor	≥0.9
L70B50 lifetime	30000hours L70B50 @ 25°
Beam Angle	120°
ta	-20-40°C/-4°F-104°F
Luminaire Location	SUITABLE FOR WET LOCATIONS

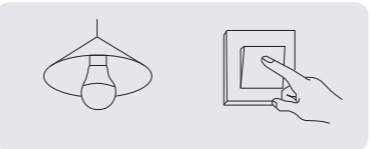
DIMENSIONS	
Model	3-LBD55M
Dimensions (LxHxW)	274x161x142mm / 10.79x6.34x5.59in
Weight	0.80 kg / 1.76 lb



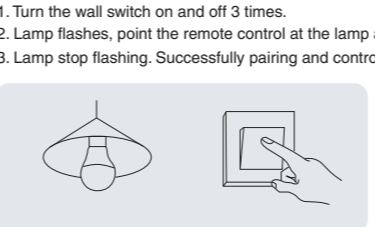
**Note:**  
The testing standard of the product's luminous flux: Place the three/two lights on the same horizontal surface for testing, and the tested luminous flux is the accurate luminous flux.

### OPERATION INSTRUCTIONS

**Note:**  
**1. If you buy a Lamp**  
Lamp and remote control are bound one-to-one (one remote can only control one light.)  
**If the remote can't control lamp, please try to Re-pair:**  
1. Turn the wall switch on and off 3 times.  
2. Lamp flashes, point the remote control at the lamp and press "Always-ON" 5s.  
3. Lamp stop flashing. Successfully pairing and control normally.

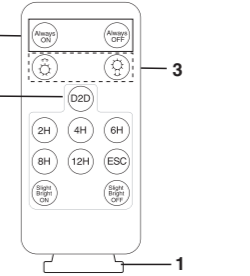


**2. If you buy two or more Lamps**  
Lamp and remote control are bound one-to-one (one remote can only control one light.)  
A → A Remote Lamp  
B → B Remote Lamp  
C → C Remote Lamp  
.....  
N → N Remote Lamp  
**If the remote can't control lamp, please try to Re-pair:**  
1. Turn the wall switch on and off 3 times.  
2. Lamp flashes, point the remote control at the lamp and press "Always-ON" 5s.  
3. Lamp stop flashing. Successfully pairing and control normally.

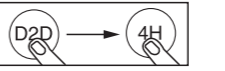


### OPERATION INSTRUCTIONS

**1. Remove the insulation sheet before using the remote control.**  
**2. ON/OFF**  
Always-On/Off Mode  
Control the security light always On or Off.  
**3. Brightness Adjustment**  
In the always-on mode and light sensing mode, the light can adjust brightness into 100%, 85%, 70%, 50%, 40% separately.  
**4. D2D-Dusk To Dawn Mode**  
The light will turn on at 100% brightness at night, and automatically turn off in the morning.  
**(1) Timer in D2D**  
In D2D mode, the light can turn on a few hours then turns off, it can be set to 2H, 4H, 6H, 8H, 12H.  
**For example :** The light turns on at 8:00 PM, and you want the light to turn off automatically after 4 hours, you can set it as follows.  
First press the D2D, light will flash to enter the light-sensing mode, then press 4H button, the light flashes once, the timing set successfully. The light will automatically off after 4 hours of light, once this setting is started, the light will be cycled on and off after 4H per day.



**(2) ESC**  
Press ESC once to cancel the timing function, and the light flashes three times means that the cancellation is successful.  
**(3) Slight bright mode**  
**Slight Bright ON:** start slight bright mode (this mode can only be set after the light-sensing timer function is activated), the light flashes once means it set successfully.  
**For example:** The light is on at 8:00 PM, and you want the light be in slight bright and always on after 4 hours, you can set it as follows.  
First press the D2D, light will flash to enter the light-sensing mode, then press 4H button, the light flashes once, the timing is set successfully. Then press Slight Bright ON to start the slight bright mode. The light will automatically enters the slight bright (20% brightness) mode until dawn after 4 hours normal lighting. Once this setting is activated, the light will cycle for 4 hours normal lighting every day and then enter the slight bright mode.  
**Slight Bright off**  
Cancel slight bright mode

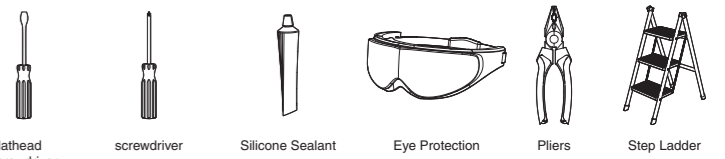


### PREPARATION

**NOTE:**  
Before beginning assembly of product, make sure all parts are present. Compare parts with parts list. If any part is missing or damaged, do not attempt to assemble the product.  
Estimated Assembly Time: 30-60 minutes.

**Recommended to be installed on the ground above 2.5m (8.2 ft) and no higher than 5 m (16.4 ft).**  
Product appearance may vary from image shown.

### TOOLS REQUIRED (not included)



**WARNING:**  
**THIS PRODUCT MUST BE INSTALLED IN ACCORDANCE WITH THE APPLICABLE INSTALLATION CODE BY A PERSON FAMILIAR WITH THE CONSTRUCTION AND OPERATION OF THE PRODUCT AND THE HAZARDS INVOLVED.**

**CAUTION:**  
**PLEASE MAKE SURE YOUR WALL SWITCH AND POWER AT MAIN CIRCUIT BREAKER BOTH ARE OFF.**

**IF IN DOUBT ABOUT ELECTRICAL INSTALLATION, CONSULT A LICENSED ELECTRICIAN.**

## PREPARATION

### RISK OF SHOCK:

BEFORE BEGINNING INSTALLATION, TURN OFF ELECTRICITY AT THE CIRCUIT BREAKER BOX OR THE MAIN FUSE BOX.

### NOTE:

BE SURE TO USE WIRE NUTS/CONNECTORS RATED FOR THE CORRECT GAUGE AND NUMBER OF WIRES USED.

MAKE SURE THERE ARE NO EXPOSED WIRE BUNDLES OUTSIDE THE WIRE NUT/CONNECTOR (IF APPLICABLE).

BE CAREFUL NOT TO DAMAGE OR CUT THE WIRE INSULATION (COVERING) DURING INSTALLATION. DO NOT LET THE WIRES TOUCH ANY SHARP EDGES.

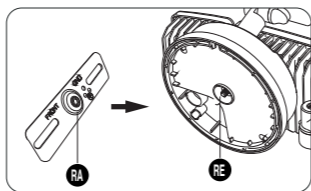
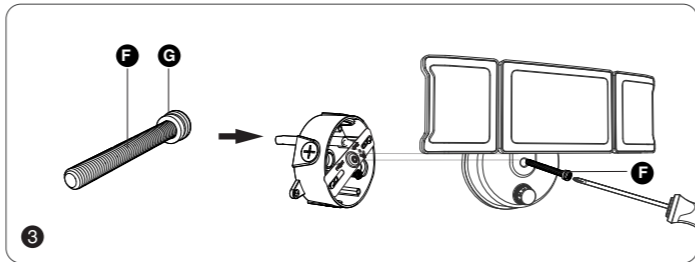
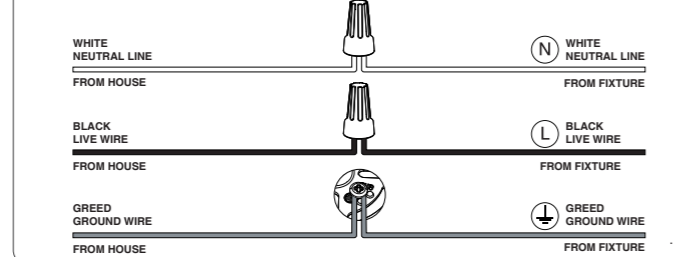
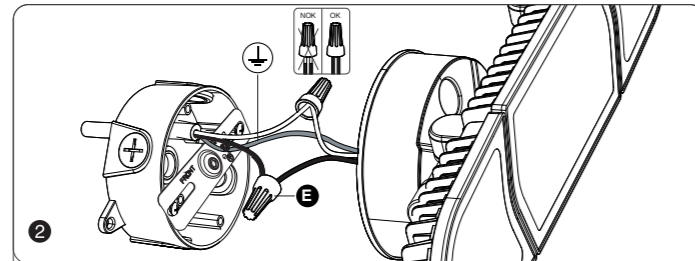
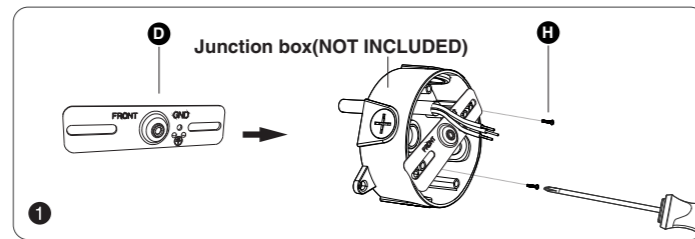
### WARNING:

DO NOT CONNECT THIS LIGHT FIXTURE TO AN UNGROUNDED ELECTRICAL SYSTEM. ATTACH GROUND FIXTURE WIRE TO EITHER GREEN GROUND SCREW ON MOUNTING PLATE OR THE GROUND WIRE IN THE OUTLET BOX.

INSTALLING THIS LIGHT IN AN UNGROUNDED ELECTRICAL SYSTEM MAY CAUSE THE METAL PARTS OF THE LIGHT TO CARRY CURRENT IF ANY WIRES OR WIRE CONNECTIONS ARE DAMAGED OR LOOSE. IN THIS CASE, ANYONE WHO TOUCHES THE LIGHT WILL RECEIVE AN ELECTRIC SHOCK, RESULTING IN INJURY OR DEATH.

## INSTALLATION STEPS

FOR WET LOCATION, MAKE SURE FILL FULL THE GAP OF EVA GASKET AND MOUNTING SURFACE WITH SEALING COMPOUND OR SILICONE GLUE.



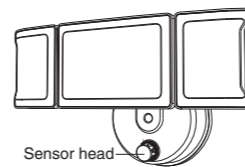
Note:  
The raised part (RA) of the metal plate must be engaged with the recessed part (RE) of the base, otherwise it cannot be installed.

## OPERATION INSTRUCTIONS

### Sensor head:

When the ambient brightness is less than 10~20LUX at night, the light will be on automatically.

When the ambient brightness is more than 30~60LUX during the day, the light will be off automatically.



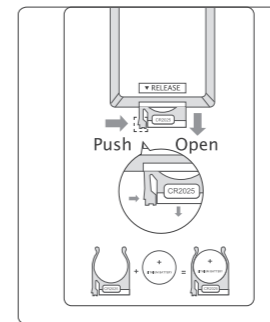
### NOTE:

Do not cover the sensor head, otherwise it will affect the normal operation of the lamp.

## TROUBLESHOOTING

Malfunction	Cause	Remedy
LED senses a movement, the light does not light up	1. The light is not energized 2. Other surrounding light sources make the light misjudge it as daytime	1. Check power-on status 2. Turn off the nearby lights or sensor head to other directions
LED sensor light illuminates during the day	The shadows around the sensor make it mistakenly think it's night	Do not cover the sensor head
LED sensor light flashing	1. Surrounded by other unstable light sources shining onto the induction 2. The light from the lamp itself is reflected on the sensor	1. Avoid being exposed to such light sources 2. Follow the instructions in "LED DUSK TO DAWN WALL LIGHT - Matters Needing Attention" to readjust the light sensor

## REPLACE THE BATTERIES



Replace the batteries of the remote control by referring to the figure on the right.

### FCC Warning:

Any Changes or modifications not expressly approved by the party responsible for compliance could void the user's authority to operate the equipment.

This device complies with part 15 of the FCC Rules. Operation is subject to the following two conditions:

- (1) This device may not cause harmful interference, and
- (2) this device must accept any interference received, including interference that may cause undesired operation.

Note: This equipment has been tested and found to comply with the limits for a Class B digital device, pursuant to part 15 of the FCC Rules. These limits are designed to provide reasonable protection against harmful interference in a residential installation. This equipment generates uses and can radiate radio frequency energy and, if not installed and used in accordance with the instructions, may cause harmful interference to radio communications. However, there is no guarantee that interference will not occur in a particular installation. If this equipment does cause harmful interference to radio or television reception, which can be determined by turning the equipment off and on, the user is encouraged to try to correct the interference by one or more of the following measures:

- Reorient or relocate the receiving antenna.
- Increase the separation between the equipment and receiver.
- Connect the equipment into an outlet on a circuit different from that to which the receiver is connected.
- Consult the dealer or an experienced radio/TV technician for help.

HK JW Illumination Co., Limited  
Unit 616, 6/F., Kam Teem Industrial Building,  
135 Connaught Road West, Sai Wan Hong Kong

Manufacturer/Hersteller: MDH LIGHTING LTD  
Suite 302, 292 Strovolos Avenue, 2048 Strovolos Nicosia,  
Cyprus

UK Importer: MDH LIGHTING LTD  
69 Aberdeen Avenue, Cambridge CB2 8DL,  
United Kingdom

Made in China

support@olafuslife.com www.olafuslife.com

