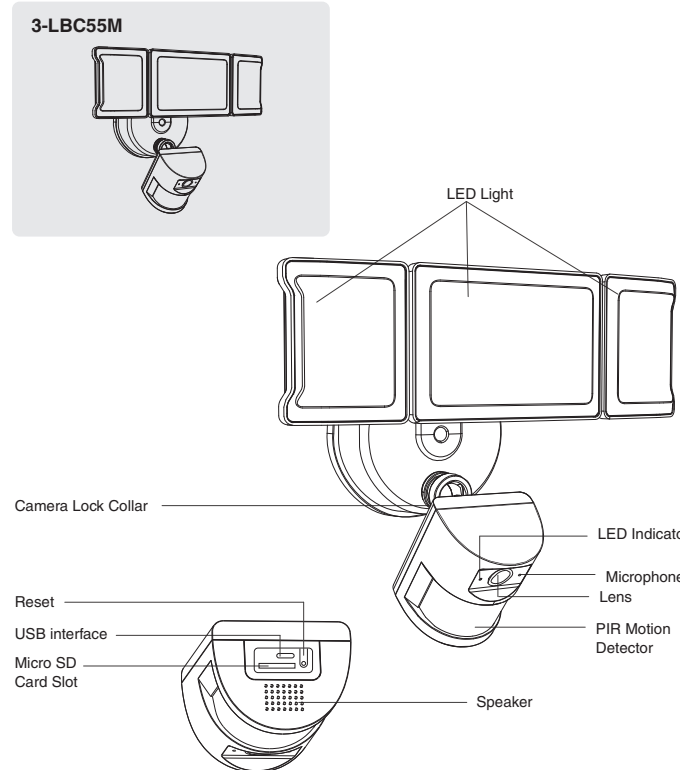


SMART WIRELESS FLOODLIGHT CAMERA

Product Manual

MODEL: 3-LBC55M

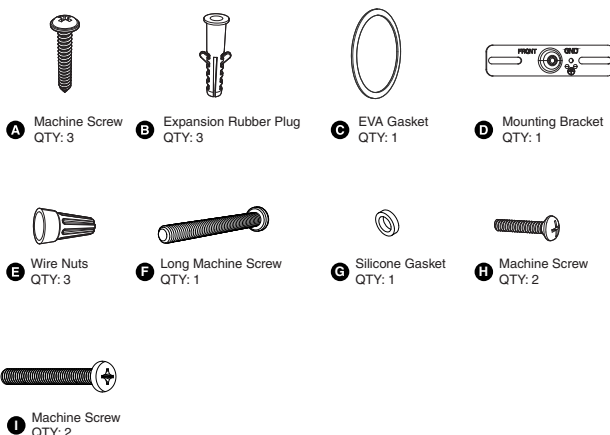
COMPONENTS AND STRUCTURE



2



PARTS LIST



3



SPECIFICATIONS

LED Floodlight	
Model	3-LBC55M
Input Voltage	100-240V ~ 50/60Hz
Input Current	0.6A
Rated Power	55W
Luminous Flux	5500lm
CCT	6500K
CRI	≥80
Power Factor	≥0.9
L70B50 lifetime	30000hours L70B50 @ 25°
Beam Angle	120°
ta	-20-40°C/-4°F-104°F
Luminaire Location	SUITABLE FOR WET LOCATIONS
Camera	
Video	3MP QHD video quality
Field of View	125° Wide viewing angle
Motion Detection	170°Advanced PIR motion detecting distance up to 26.24ft
Audio	Two-Way Talk with Audio and advanced noise cancellation.
Siren	Remote-activated 67db siren (level measured at 16.4ft distance).
Internet Requirements	Recommended minimum upload speed of 2 Mbps per device.
Connectivity	802.11 b/g/n/ac Wi-Fi connection @ 2.4GHz 902-928 Mhz Radio
Storage	Micro SD Card up to 128GB (not included)

4



SPECIFICATIONS

DIMENSIONS	
Model	3-LBC55M
Dimensions (LxHxW)	274x141x225mm/ 10.79x5.55x9.29 in
Weight	0.9kg/1.98 lb

5



SAFETY INFORMATION



WARNING: Risk of electrical shock

- Disconnect power at the fuse or circuit breaker before installing.
- Verify that the supply voltage is correct. Connect fixture to a 100-240V ~ 50/60Hz power source.

Properly ground fixture.

Always follow code standards when installing wire connections. If you are outside of North America, installation and wiring must be performed by a licensed electrician.

CAUTION: Risk of fire

Do not install near combustible or flammable surfaces.

NOTICE

Do not connect this light fixture to a dimmer switch or timer. Floodlight Camera must be installed on a wall and on a UL listed junction box.

WARNING:

THIS PRODUCT MUST BE INSTALLED IN ACCORDANCE WITH THE APPLICABLE INSTALLATION CODE BY A PERSON FAMILIAR WITH THE CONSTRUCTION AND OPERATION OF THE PRODUCT AND THE HAZARDS INVOLVED.

DO NOT CONNECT THIS LIGHT FIXTURE TO AN UNGROUNDED ELECTRICAL SYSTEM. ATTACH GROUND FIXTURE WIRE TO EITHER GREEN GROUND SCREW ON MOUNTING PLATE OR THE GROUND WIRE IN THE OUTLET BOX.

6



SHUT POWER OFF AT THE BREAKER

Turn off power to work area at main circuit breaker or fuse box
Caution: Please make sure your wall switch and power at main circuit breaker both off.



If you don't know where your breaker is or how to turn off power to your floodlight circuit, consult with a licensed electrician.

PREPARATION

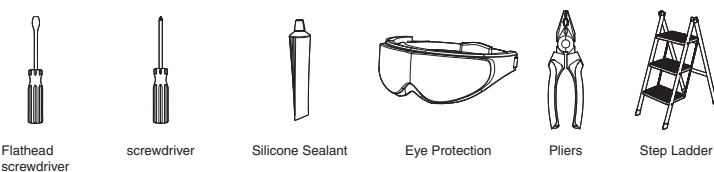
NOTE:

Before beginning assembly of product, make sure all parts are present. Compare parts with parts list. If any part is missing or damaged, do not attempt to assemble the product. Estimated Assembly Time: 30-60 minutes.

Recommended to be installed 2.5m (8.2ft) above the ground but not higher than 5m (16.4ft).

Product appearance may vary from image shown.

TOOLS REQUIRED (not included)

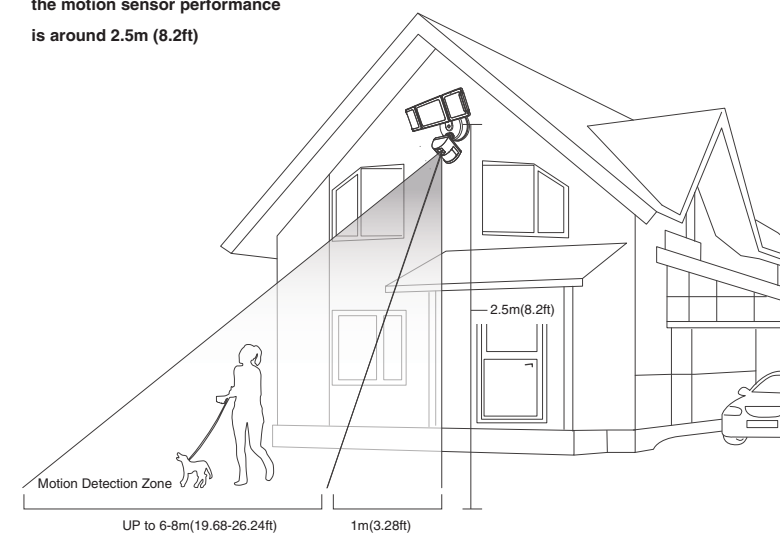


7



PROPER INSTALLATION HEIGHT

The proper installation height to optimize the motion sensor performance is around 2.5m (8.2ft)

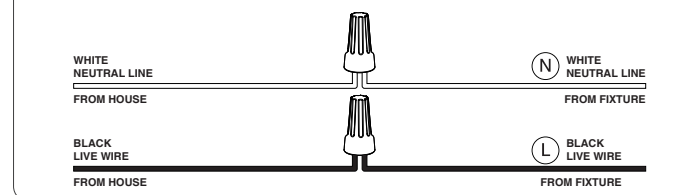
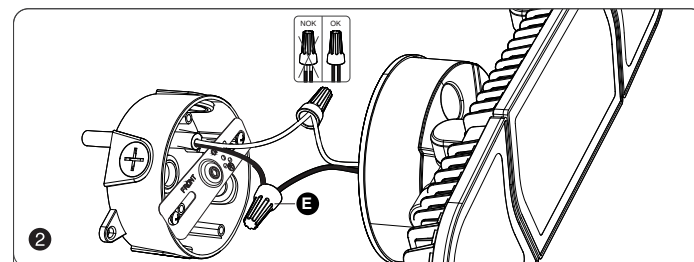
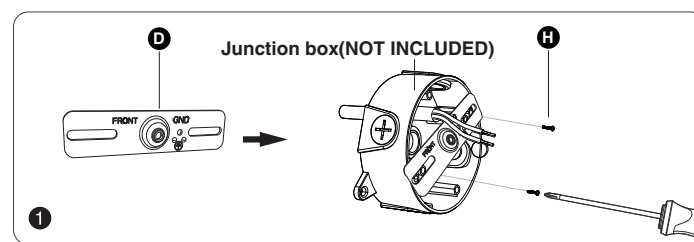


8

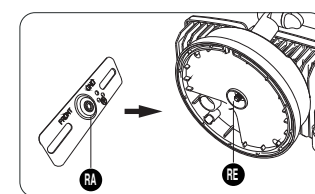
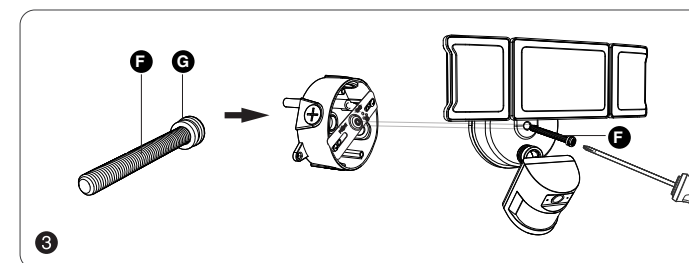


INSTALLATION STEPS

FOR WET LOCATION, MAKE SURE FILL FULL THE GAP OF EVA GASKET AND MOUNTING SURFACE WITH SEALING COMPOUND OR SILICONE GLUE.



9



Note:
The raised part (RA) of the metal plate must be engaged with the recessed part (RE) of the base, otherwise it cannot be installed.

10



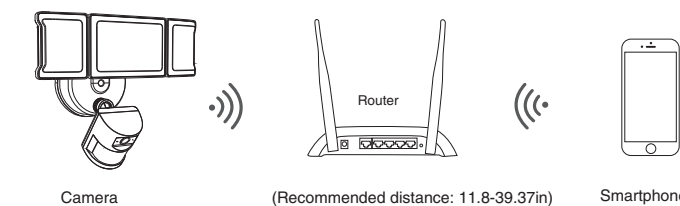
RESTORE POWER AT THE BREAKER



After restoring power, the lights will turn on and your Floodlight Camera will begin speaking to you to let you know it's in setup mode.

CONNECTION PREPARATION

Please install the Floodlight Camera within Wi-Fi covered area to ensure the best working performance. Make sure smart phone is connected with your wireless router. Please note that the camera only works with 2.4G Wi-Fi and does not support 5G Wi-Fi. Smartphones (iOS 9.0 or Android 4.4 and above) are supported. Tablets, Mac or Windows computers are not supported. Please don't use special characters, symbols to name the Wi-Fi and its password.



11



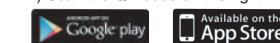
PAIRING LED LIGHT WITH "Smart Life" APP

Step 1. Get the App and the Account

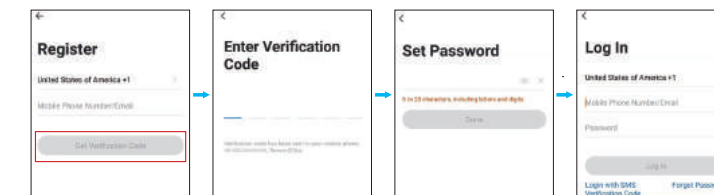


1. "Smart Life" App Download. There are 2 options for obtaining and downloading the "Smart Life" App on your smart device.

1) Scan the QR code on the right.



2) Search for "Smart Life" in the App Store or Google Play.



2. Enter the "Smart Life" App. Register an account and log in. If you already have an account for Smart Life App, Please select "Log in with existing account".
Note: You will need your "Smart Life" App username and password to pair with Amazon Alexa and/or Google Assistant.



3. Please turn on the Wi-Fi and Bluetooth before connecting LED lights to the "Smart Life" App.

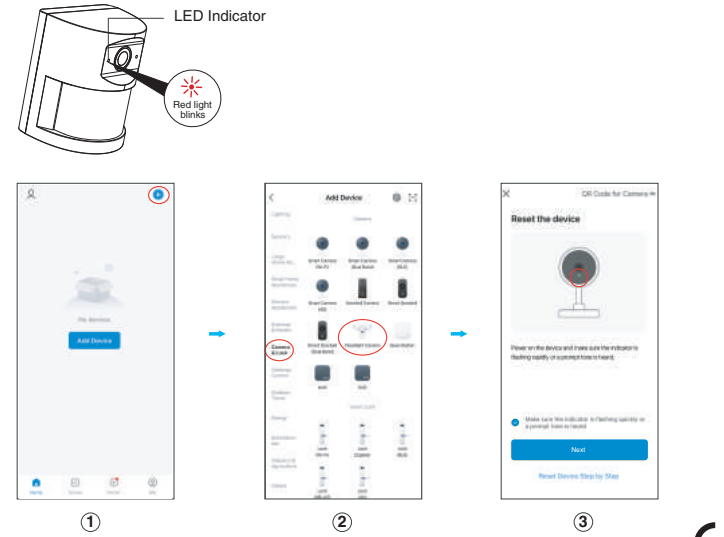
12



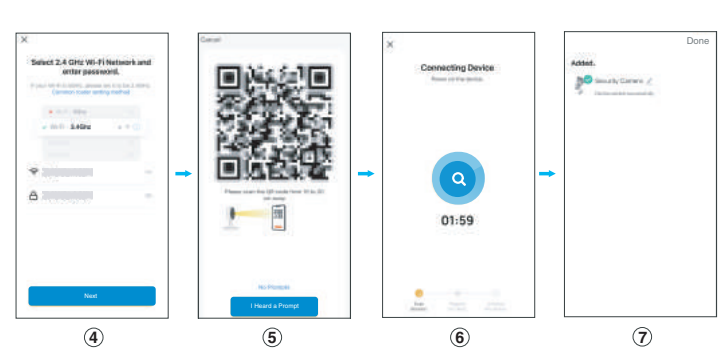
PAIRING FLOODLIGHT CAMERA WITH "Smart Life" APP

Connect the App
 1. Connect the floodlight camera to the power supply, the light will be on for 1 second (It means the light can work normally). And then the light will turn off.
 2. The weak blue LED indicator on the camera will light up for 10-15s; Then blue LED indicator will be off for 5-10s.
 3. The red LED indicator will be on, and you can hear a "deng deng deng" short sound (It means the camera work). The red indicator will be on for 5-10s, then the red LED indicator will flash. When red indicator is flashing (It means the camera is waiting for pairing), you can pairing your phone with "Smart Life" app on your phone.

Note: Only when the red indicator flashing, we can pair the phone and camera. Otherwise, the pairing will fail.
Note: What if I can't connect to the camera?
 Try to reset the camera; The reset step is refer to page 15th.
 If it still can not be solve, contact our seller and provide the number posted on the camera, please.



PAIRING FLOODLIGHT CAMERA WITH "Smart Life" APP



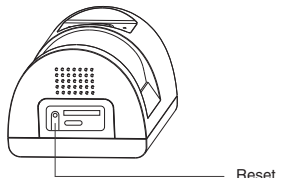
- Tap "+" button on top right corner and tap "Add Device" to add device.
- Tap "Camera&Lock" and then "Floodlight Camera" to enter next page.
- Enter Wi-Fi password to join your network. Please Note: a. This smart LED Light can only support 2.4 GHz network and cannot work with 5.0 GHz network. b. Please check if your home network is 2.4 GHz and make sure that your phone has been connected to your Wi-Fi network. Please ensure your network is not hidden.
- Tap the "Next" button to pair the LED Light
- Put the QR code that appears on the APP in front of the Camera at a distance of 15-20cm (5.9-7.87in). Let the Camera scan the code. When the LED indicator becomes blue and flashing, and you can hear a "deng deng deng" short sound, it means the camera is already scan the QR code. Press the "I hear prompt" button on your phone. Then you will hear the camera emitting "deng deng deng" short sound. (It means the camera already found the device, and it is connecting the network.) The blue indicator will continuously flashing.
- Wait for the device to register (about 40-60s). When the blue LED indicator stop flashing and the light is always on, It means the connected is finished.
- Tap "Done" to complete the light pairing.
Note:The blue light is on, camera is ready for viewing.

CAMERA LED INDICATOR

NO.	LED Status	Camera Status
1	Red indicator always on	System starting up
2	Red indicator flashing	Waiting for pairing to network
3	Blue indicator flashing	Network pairing
4	Blue indicator always on	Camera connecting to network successful

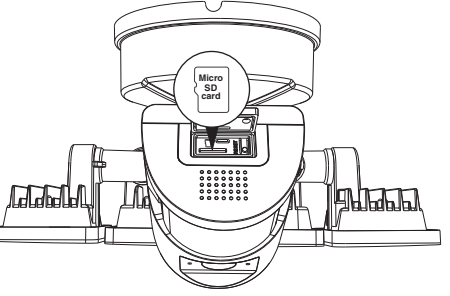
Reset

Note: If the pairing is failed, please long press the resetting key for 3-5s until you see the red indicator flashing and hear "deng deng deng" sounds (means the resetting succeed). The red indicator will flash for 3s, and turn off. Then the blue indicator will be on for 10-15s, and then off for 5-10s. Red indicator is on, and you will hear "deng deng deng" again, also, the red indicator is flashing. At this time, you can connect your phone to the camera by scanning the QR code. And continue the next step that is shown on page 13th.

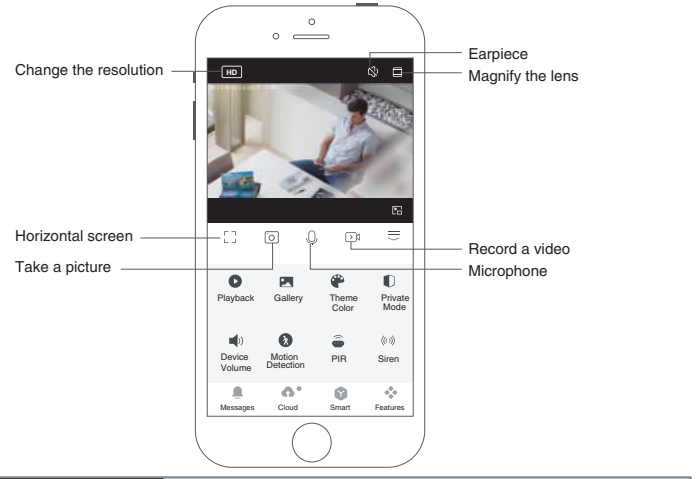


Micro SD Card

- To ensure Micro SD Card video recording works steady, we recommend to use a Class 10 or higher speed Micro SD Card.
- To make sure the device works normally, please format the Micro SD Card to FAT32 before the first time use.
- Before insert or pull out the Micro SD Card, please power off the device.
- Insert the Micro SD Card properly into the slot as below.
- It only support Micro SD Card up to 128GB (not included).

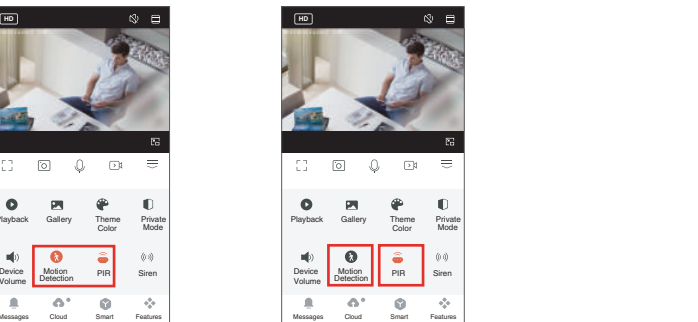


HOW TO OPERATE THE APP



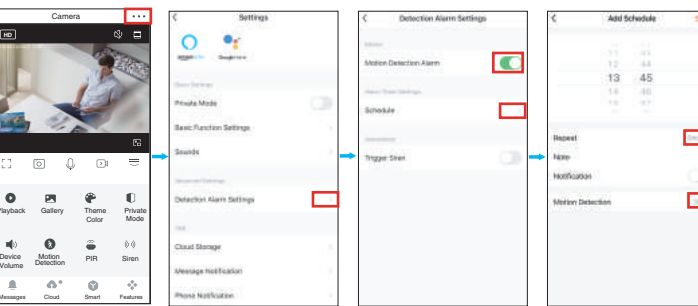
Playback	You can watch back the previous video recordings here. Note: Micro SD Card is required to watch back.
Microphone & Earpiece	If two way audio is needed, please set in "Settings" - "Basic function settings" - "Talk Mode" - turn on "Two-way talk".
Motion Detection	Switch for motion detection.
PIR	Activate the PIR and adjust its sensitivity.
Device Volume	The microphone volume of the device can be adjusted
Siren	Press "Siren" to start the alarm.
Light	Manually switch on/off the lamp, adjust the brightness and set a timer.
Message	Check the monitored information.

HOW TO OPERATE THE APP



After the first connection of the camera, both "Motion Detection" and "PIR" will be turned on by default. When both buttons are turned on, the PIR sensor can only sense people within 2-3 meters and light up at night.

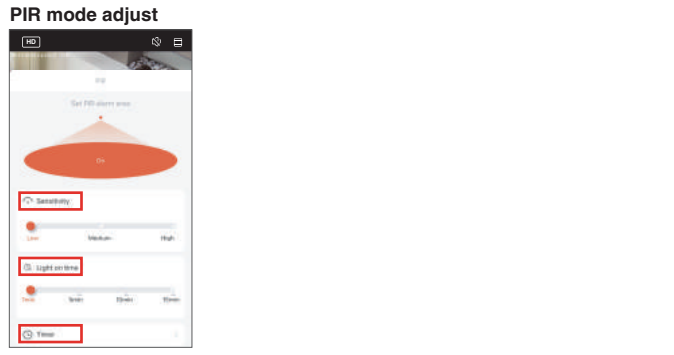
Disable "Motion Detection" and activate "PIR". The light will illuminate when it detects a person at night, with a sensing distance of 6-8m (19.68-26.24ft).



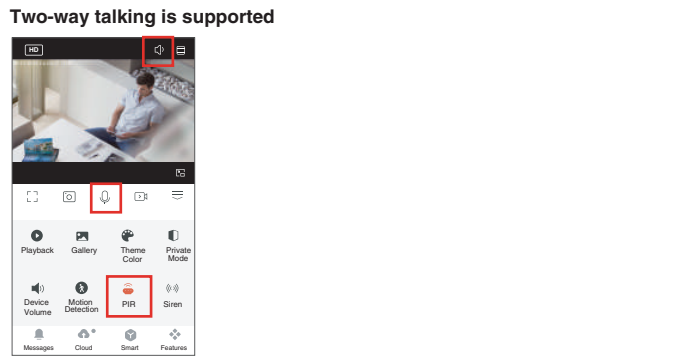
In order to activate "Motion Detection" + "PIR" during the day and only enable "PIR" at night, you can configure the daily scheduled switch for "Motion Detection".

How to set the automatic scheduled switch for "Motion Detection"?

HOW TO OPERATE THE APP

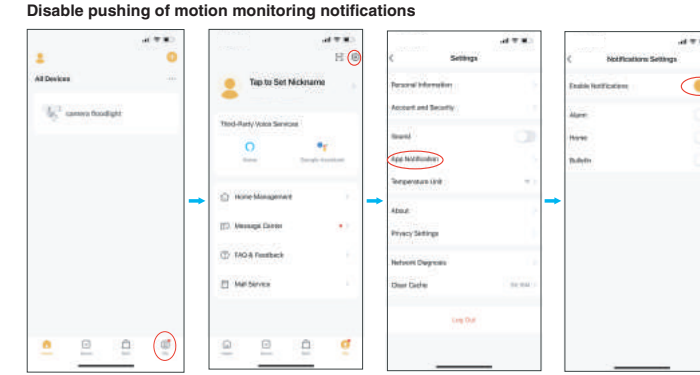


In PIR mode, sensitivity, delay time, and timing can be adjusted.

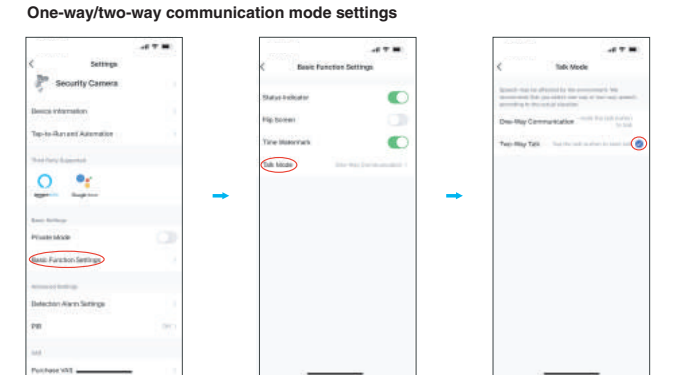


Note: To activate the communication mode, be sure to remove the slash on the "Earpiece" and turn on the "Microphone".

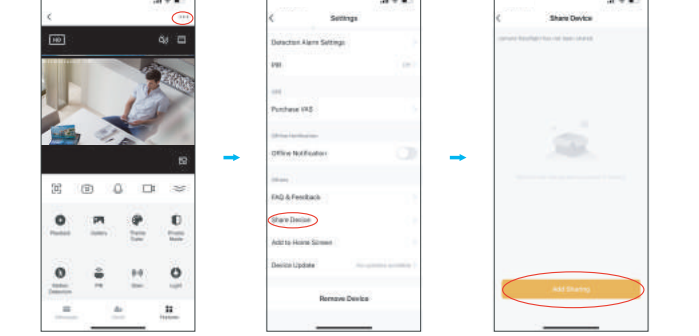
HOW TO OPERATE THE APP



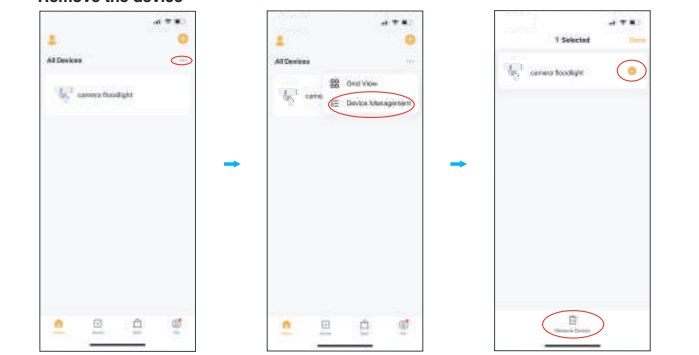
If you want to activate the motion monitoring function, but do not want to frequently receive notifications, you can disable the notification push feature.



Share the device



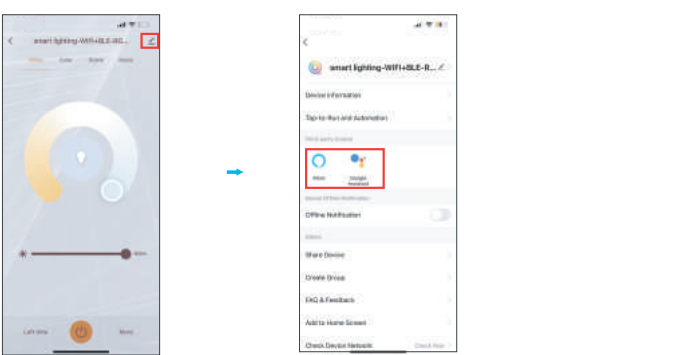
You can choose to share the device to other members of the family.
Note: Shared family members can only view monitoring and notifications, but cannot set up the monitor.
Remove the device



When you replace your phone, or someone else wants to connect to the device, be sure to remove the device from your old phone first.

Note: For security reasons, the device can only be connected by one person at a time. If someone else wants to see the camera information at the same time, you can refer to "Share the device".

HOW TO CONNECT WITH ALEXA SHOW AND GOOGLE ASSISTANT APP



Tap "Z" and find the third-party voice device you want to connect to and tap it, then follow the steps to connect.

FCC ID: 2A3W8BDB55SX-3

FCC Warning:

Any Changes or modifications not expressly approved by the party responsible for compliance could void the user's authority to operate the equipment.
 This device complies with part 15 of the FCC Rules. Operation is subject to the following two conditions:
 (1) This device may not cause harmful interference, and
 (2) this device must accept any interference received, including interference that may cause undesired operation.
Note: This equipment has been tested and found to comply with the limits for a Class B digital device, pursuant to part 15 of the FCC Rules. These limits are designed to provide reasonable protection against harmful interference in a residential installation. This equipment generates uses and can radiate radio frequency energy and, if not installed and used in accordance with the instructions, may cause harmful interference to radio communications. However, there is no guarantee that interference will not occur in a particular installation. If this equipment does cause harmful interference to radio or television reception, which can be determined by turning the equipment off and on, the user is encouraged to try to correct the interference by one or more of the following measures:
 -Reorient or relocate the receiving antenna.
 -Increase the separation between the equipment and receiver.
 -Connect the equipment into an outlet on a circuit different from that to which the receiver is connected.
 -Consult the dealer or an experienced radio/TV technician for help.
 This equipment complies with FCC radiation exposure limits set forth for an uncontrolled environment. This equipment should be installed and operated with minimum distance 20cm between the radiator & your body.

FAQ

- What if I can't connect to the camera?**
 Try to reset the camera; The reset step is refer to page 16th.
 If it still can not be solve, contact our seller and provide the number posted on the camera, please.
 - Can't find a Micro SD Card?**
 Firstly we suggest using these famous brands card, like Samsung, SanDisk, Kingston etc. with at least class 10.
 Secondly, please format it to FAT32, which is the only format that camera can support.
 - Floodlight cannot turn on automatically?**
 If you want the light to turn on in the darkness when people or animal moving, please set on "Motion Detection" and "PIR" on the app.
 - Siren cannot turn on automatically?**
 Siren is designed to be turned on manually to avoid disturbing your neighbors.
 - Two way audio is not working?**
 Please go to "Settings" - "Basic function settings" - "Talk Mode" - turn on "Two-way talk".
 - You cannot get the video for a long time?**
 Please first make sure the camera is installed as close as possible to your router.
 It is not recommended to install the camera in a place where there are two thick walls away from the router.
 Please test your network and make sure it works well.
- For more questions, please send them via the "Settings" - "FAQ&Feedback" within the app.**

HK JW Illumination Co., Limited
 Unit 616, 6/F., Kam Teem Industrial Building,
 135 Connaught Road West, Sai Wan Hong Kong
 Manufacturer/Hersteller: MDH LIGHTING LTD
 Suite 302, 292 Strovolos Avenue, 2048 Strovolos Nicosia,
 Cyprus
 UK Importer: MDH LIGHTING LTD
 69 Aberdeen Avenue, Cambridge CB2 8DL,
 United Kingdom
 Made in China
 support@olafuslife.com www.olafuslife.com

