

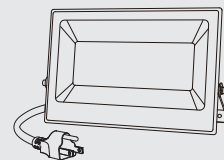
LED FLOOD LIGHT

Product Manual

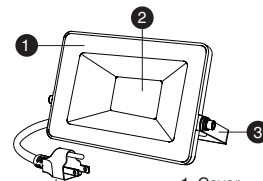
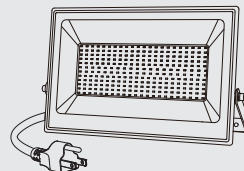
MODEL: LAA100G LAA200G

COMPONENTS AND STRUCTURE

LAA100G



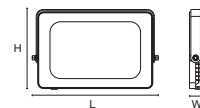
LAA200G



(US) 1.5m/4.92ft
 1. Cover
 2. LED Light Source
 3. Lamp Bracket

SPECIFICATIONS

LED FLOOD LIGHT		
Model	LAA100G	LAA200G
Input Voltage	100-120V ~60Hz	
Input Current	0.83A	2.26A
Rated Power	100W	200W
Luminous Flux	9000lm	19000lm
CCT	6500K	
CRI	≥80	
Power Factor	≥0.9	
L70B50 lifetime	30000hours L70B50 @25°	
Beam Angle	120°	
t _a	-20-40°C/-4°F-104°F	
Luminaire Location	SUITABLE FOR WET LOCATIONS	
DIMENSIONS		
Model	LAA100G	LAA200G
Dimensions (LxHxW)	250x39x160 mm/ 9.84x1.54x6.30 in	334x44x197 mm/ 13.15x1.73x7.76in
Weight	0.94kg / 2.07 lb	1.715 kg / 3.78 lb



PREPARATION

Check all components for damage, do not use the product if it is damaged.

Estimated Assembly Time: 10-30 minutes

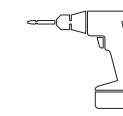
TOOLS REQUIRED (not included)



Flathead screwdriver



Screwdriver



Electric drill



Eye Protection



Pliers



Step Ladder

WARNING:

THIS PRODUCT MUST BE INSTALLED IN ACCORDANCE WITH THE APPLICABLE INSTALLATION CODE BY A PERSON FAMILIAR WITH THE CONSTRUCTION AND OPERATION OF THE PRODUCT AND THE HAZARDS INVOLVED. RISK OF SHOCK - BEFORE BEGINNING INSTALLATION, TURN OFF ELECTRICITY AT THE CIRCUIT BREAKER BOX OR THE MAIN FUSE BOX.

PREPARATION

CAUTION:

PLEASE MAKE SURE YOUR WALL SWITCH AND POWER AT MAIN CIRCUIT BREAKER BOTH ARE OFF.

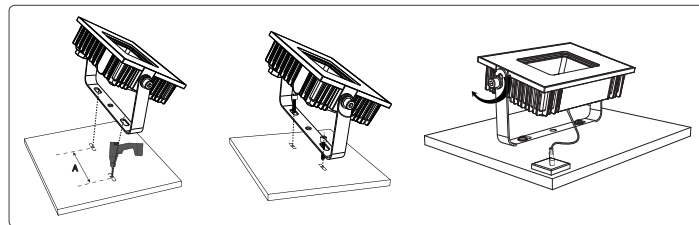
IF IN DOUBT ABOUT ELECTRICAL INSTALLATION, CONSULT A LICENSED ELECTRICIAN.

WARNING: INSTALLING THIS LIGHT IN AN UNGROUNDED ELECTRICAL SYSTEM MAY CAUSE THE METAL PARTS OF THE LIGHT TO CARRY CURRENT IF ANY WIRES OR WIRE CONNECTIONS ARE DAMAGED OR LOOSE. IN THIS CASE, ANYONE WHO TOUCHES THE LIGHT WILL RECEIVE AN ELECTRIC SHOCK, RESULTING IN INJURY OR DEATH.

BE CAREFUL NOT TO DAMAGE OR CUT THE WIRE INSULATION (COVERING) DURING INSTALLATION. DO NOT LET THE WIRES TOUCH ANY SHARP EDGES.



INSTALLATION STEPS



Step 1: According to the spacing (see the "A" part of the picture) of two screw bits on the LED Light bracket, drill two mounting holes.

Step 2: Put the bracket onto the prepared mounting holes and then screw it on.

Step 3: Adjust the beam direction as you like, Wiring.

Step 4: Adjust the beam direction as you like, and then plug into the main socket.

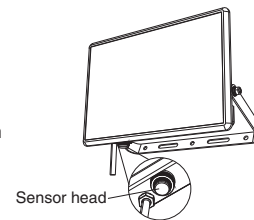


OPERATION INSTRUCTIONS

Sensor head:

When the ambient brightness is less than 10~20LUX at night, the light will be on automatically.

When the ambient brightness is more than 30~60LUX during the day, the light will be off automatically.



NOTE:

Do not cover the sensor head, otherwise it will affect the normal operation of the lamp.

TROUBLESHOOTING

Malfunction	Cause	Remedy
LED senses a movement, the light does not light up	1. The light is not energized 2. Other surrounding light sources make the light misjudge it as daytime	1. Check power-on status 2. Turn off the nearby lights or sensor head to other directions
LED sensor light illuminates during the day	The shadows around the sensor make it mistakenly think it's night	Do not cover the sensor head
LED sensor light flashing	1. Surrounded by other unstable light sources shining onto the induction 2. The light from the lamp itself is reflected on the sensor	1. Avoid being exposed to such light sources 2. Follow the instructions in "LED DUSK TO DAWN WALL LIGHT – Matters Needing Attention" to readjust the light sensor



FCC Warning:

Any Changes or modifications not expressly approved by the party responsible for compliance could void the user's authority to operate the equipment.

This device complies with part 15 of the FCC Rules. Operation is subject to the following two conditions:

- (1) This device may not cause harmful interference, and
- (2) this device must accept any interference received, including interference that may cause undesired operation.

Note: This equipment has been tested and found to comply with the limits for a Class B digital device, pursuant to part 15 of the FCC Rules. These limits are designed to provide reasonable protection against harmful interference in a residential installation. This equipment generates uses and can radiate radio frequency energy and, if not installed and used in accordance with the instructions, may cause harmful interference to radio communications. However, there is no guarantee that interference will not occur in a particular installation. If this equipment does cause harmful interference to radio or television reception, which can be determined by turning the equipment off and on, the user is encouraged to try to correct the interference by one or more of the following measures:

- Reorient or relocate the receiving antenna.
- Increase the separation between the equipment and receiver.
- Connect the equipment into an outlet on a circuit different from that to which the receiver is connected.
- Consult the dealer or an experienced radio/TV technician for help.

HK JW Illumination Co., Limited
Unit 616, 6/F., Kam Teem Industrial Building,
135 Connaught Road West, Sai Wan Hong Kong

Manufacturer/Hersteller: MDH LIGHTING LTD
Suite 302, 292 Strovolos Avenue, 2048 Strovolos Nicosia,
Cyprus

UK Importer: MDH LIGHTING LTD
69 Aberdeen Avenue, Cambridge CB2 8DL,
United Kingdom

Made in China

✉ support@olafuslife.com 🌐 www.olafuslife.com

