



**SOUNDWAVE® BELLA**  
Acoustic Panel  
By 3XN

## FACTS

# OFFECCT

### PRODUCT INFORMATION

Soundwave® Bella is an acoustic panel designed by the Danish architectural office 3XN. The panel was designed for the Bella Sky Hotel in Copenhagen and fits well with 3XN's architectural project in its entirety.

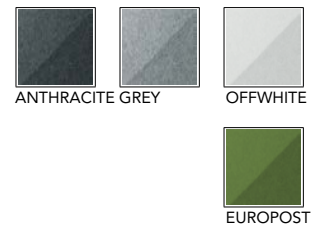
"When we designed the Soundwave® Bella we were inspired by the very sharp character of the building itself with its absence of right angles. The reference to the building became even clearer when we decorated an entire wall of each conference room with Soundwave® Bella in white", says Kim Herforth Nielsen, founder of 3XN.

"The flexibility of the Soundwave® system allowed us to give each conference room a separate identity by having one square on each wall in a unique color in order to distinguish the different rooms", concludes Kim Herforth Nielsen.

### TECHNICAL INFORMATION

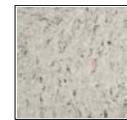
Bella is designed to be used as lightweight sound absorber in the upper frequency range (500 Hz and above). This panel helps reducing disturbing reflections of environmental sounds such as voices, telephones etc. Recyclable moulded polyester fibre in anthracite, grey and offwhite alt. upholstered in Europost.

### ENVIRONMENTAL LABELING



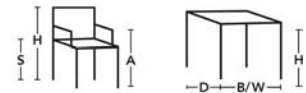
### ACCESSORIES

Separate filling made of recycled textile and PET. Basfill is being placed inside the Soundwave panels in order to improve sound absorption in the lower frequency range (150-500 Hz). Basfill is available as accessories to all panels except for Luna and Pix.



BASFILL

### SOUNDWAVE® BELLA



H 585, W 585, D 60



This product is available in an eco-labeled performance, certified by the Nordic Ecolabel and/or Möbelfakta. By choosing this product you make a difference towards a better environment.