

All threads in this color card are also ideal for decorative seams

CLASSIC

**Viskose
Stickgarn**

**Rayon
Embroidery
Thread**

**Hilo para
bordar de
rayón**

**Filato da
ricamo in
viscosa**

**Fil à broder
rayonne**

**Linha para
bordar de
viscose**

**Floş
nakış ipliği**

**Вышиваль-
ные нитки из
вискозы**

人造丝绣花线

the choice of market leaders

made in Germany

MADERA®



CLASSIC 40 CLASSIC 30

CLASSIC No.40

ist der Klassiker unter den Stickgarnen. Das Viskosegarn mit seinem unvergleichlich schönen Glanz ist in allen abgebildeten Farben erhältlich.

CLASSIC No.30

Garne sind mit einem ● gekennzeichnet.
CLASSIC No.30 ist stärker als CLASSIC No.40 und bietet sich hervorragend für Stickereien an, bei denen man die Stichzahl reduzieren möchte oder wenn besondere Effekte erzielt werden sollen.

CLASSIC No.60

Garne sind mit einem ● gekennzeichnet.
CLASSIC No.60 ist die feinste Viskosequalität. Ideale Einsatzbereiche sind z.B. Monogramm-Stickereien, Beschriftungen von Abzeichen und schwierige oder filigrane Stickarbeiten. CLASSIC No.60 wird häufig eingesetzt, um in einer Stickerei Details deutlicher hervorzuheben und aufzuwerten.

CLASSIC No.12

Garne sind mit einem ● gekennzeichnet.
CLASSIC No.12 ist die größte Variante unseres Viskosegarnes. Speziell Konturen und Zierstiche, mit CLASSIC No.12 realisiert, setzen besondere Akzente. CLASSIC No.12 ist auch für den Einsatz auf Overlockmaschinen geeignet.

Achtung:

Die verschiedenen Garnstärken haben unterschiedliche Strukturen. Der Glanz und Farbton des Garnes wird dadurch beeinflusst, und somit können Unterschiede zu den in Garnstärke No.40 gezeigten Farbfeldern auftreten.

Multicolour/Ombré:

Die spezielle Färbetechnik kann Einfluss auf die Farbfolge und die Farbwirkung haben. Dies macht den besonderen Charme dieses Effektgarnes aus.

1123 ●	
1067 ●	
1349	
1083 ●	
1124	
1125 ●	
1066 ●●	
1061 ●	
1171 ●	
1172 ●	
1025 ●●	
1065 ●●	
1137 ●●●	
1437	
1024 ●●●	
1069	
1068 ●	
1064 ●	
1223 ●	
1180	
1135 ●	
1022 ●	
1023 ●●●	
1224	
1359	
1159	
1192 ●	

CLASSIC 60 CLASSIC 12

1026	
1253	
1421	
1021 ●●●	
1155	
1478	
1278 ●●●	
1078 ●●●	
1178	
1378	
1379	
1152 ●	
1017 ●	
1018 ●●	
1254	
1221	
1020	
1179	
1477	
1146 ●	
1037 ●●●	
1447	
1147 ●●●	
1484 ●	
1481	
1181 ●●●	
1238	

CLASSIC 40 CLASSIC 30



CLASSIC No.40

is the classic of all embroidery threads. Viscose Rayon with a wonderful sheen, available in all colors on this shadecard, suitable for all types of embroidery.

CLASSIC No.30

colors are indicated with ●. CLASSIC No.30 is thicker than CLASSIC No.40 and is ideal to reduce embroidery stitch counts and produce striking special effects.

CLASSIC No.60

colors are indicated with ●. CLASSIC No.60 is the finest viscose thread. Ideal for monogramming, fine lettering or badges and complicated or filigree embroidery. CLASSIC No.60 provides clarity and definition to embroidery.

CLASSIC No.12

colors are indicated with ●. CLASSIC No.12 is the thickest thread in the MADEIRA Viscose program. Special outlines, fancy stitches and heavier designs are the speciality with CLASSIC No.12. Due to its construction, CLASSIC No.12 is also wonderful as an overlock thread.

Attention:

Naturally, thread construction varies between thicknesses. This influences colours and shades which may appear slightly different between thread counts.

Multicolour/Ombre:

The dye technology behind this fascinating thread creates a unique colour sequence and special effect which varies between dye batches, providing individuality to your creations.

1013 ●	
1015 ●	
1317 ●	
1220	
1307 ●	
1485	
1039 ●●	
1038 ●	
1114 ●	
1115 ●	
1315 ●	
1148 ●	
1384 ●	
1385	
1182 ●●	
1281	
1184 ●	
1154	
1107 ●	
1014	
1120 ●	
1116 ●●●	
1108 ●	
1354	
1081 ●	
1186	
1381 ●	

CLASSIC 60 CLASSIC 12

1111 ●	
1031 ●●	
1235	
1320	
1388	
1319	
1488	
1310	
1321 ●	
1121 ●●	
1309 ●●	
1109 ●	
1110 ●●●	
1383	
1187 ●	
1234	
1117 ●●	
1183 ●	
1389	
1034	
1119 ●●	
1035 ●●	
1386	
1356 ●	
1141 ●	
1382	
1236	



CLASSIC 40 CLASSIC 30

CLASSIC No.40

es el más clásico de todos los hilos de bordar. Viscosa-Rayón con un brillo maravilloso, disponible en todos los colores de esta carta y apropiado para cualquier tipo de bordado.

CLASSIC No.30

colores marcados con ●. CLASSIC No.30 es más grueso que el CLASSIC No.40 y es ideal para reducir el número de puntadas en el bordado y para realizar efectos especiales.

CLASSIC No.60

colores marcados con ●. CLASSIC No.60 es el hilo más fino de viscosa. Es ideal para monogramas, letras pequeñas o insignias y para bordados filigranos. CLASSIC No.60 proporciona claridad y definición al bordado.

CLASSIC No.12

colores marcados con ●. CLASSIC No.12 es el hilo más grueso dentro de la gama de los hilos de viscosa de MADEIRA. Contornos y puntadas decorativas son las especialidades a realizar con el hilo CLASSIC No.12. El hilo CLASSIC No.12 es también perfecto para máquinas de overlock.

Atención:

Son las diferentes estructuras de los distintos grosores de hilo que influyen en el brillo y en la tonalidad, y por eso se pueden encontrar diferencias de color entre distintos grosores.

Multicolor/Ombre:

La técnica especial de tintado puede tener influencia tanto en el orden de colores como en su apariencia. Esto crea el carácter especial de este hilo.

1261	
1266	
1166 ●●	
1466	
1335	
1330 ●	
1343	
1366 ●	
1322	
1112 ●	
1412	
1422	
1122 ●●	
1311 ●	
1032 ●	
1033 ●	
1334	
1188 ●	
1080 ●●	
1232	
1312	
1313	
1233	
1263	
1264	
1387	
1362	

CLASSIC 60 CLASSIC 12

1198 ●	
1030 ●	
1364 ●	
1365	
1175 ●●	
1242 ●●	
1042 ●●	
1029 ●	
1176 ●●	
1177	
1434	
1134 ●●●	
1133 ●●●	
1432	
1074 ●●	
1075 ●●	
1076 ●●	
1167 ●	
1143 ●	
1275	
1467	
1243 ●●●	
1368	
1043 ●	
1044 ●●●	
1367	
1244 ●	



CLASSIC 40 CLASSIC 30

CLASSIC No.40

È il filato da ricamo classico. Rayon viscosa con una lucentezza meravigliosa. Disponibile in tutti i colori di questa cartella.

CLASSIC No.30

I colori disponibili sono marcati con ●. CLASSIC No.30 è più grosso rispetto al CLASSIC No.40 ed è ideale per risparmiare punti in un ricamo o per realizzare effetti particolari.

CLASSIC No.60

I colori disponibili sono marcati con ●. CLASSIC No.60 è il filato da ricamo in viscosa più fine e viene utilizzato per monogrammi, per ricamare scritte su distintivi e per realizzare ricami in filigrana. CLASSIC No.60 viene utilizzato spesso per valorizzare dettagli in un ricamo.

CLASSIC No.12

I colori disponibili sono marcati con ●. CLASSIC No.12 è il filato più grosso in viscosa della MADEIRA. Contorni e punti decorativi realizzati con CLASSIC No.12 danno un tocco particolare al capo. CLASSIC No.12 può essere utilizzato anche su macchine overlock.

Attenzione:

I diversi titoli di filato hanno strutture differenti. Il colore e la lucentezza possono essere influenzati dalla struttura del filato.

Multicolor/Ombre:

La speciale tecnica di tintura influenza la successione e l'effetto dei colori. Questo filato d'effetto ottiene così il suo fascino particolare.

1153 ●●	
1360 ●	
1353	
1277	
1028 ●●	
1276	
1375	
1376 ●	
1274 ●	
1132 ●●●	
1027	
1373	
1497	
1297 ●●	
1476	
1296	
1096 ●	
1092 ●●	
1294	
1295 ●●	
1095 ●	
1094 ●●	
1093 ●	
1089 ●	
1289	
1291	
1091 ●	

CLASSIC 60 CLASSIC 12

1163	
1160 ●	
1161	
1162	
1252	
1290 ●	
1052	
1293	
1090 ●	
1088	
1292 ●●	
1246 ●	
1185	
1298	
1380	
1299	
1045 ●	
1279	
1371	
1046 ●	
1245	
1280	
1284	
1301	
1247 ●	
1480	
1304 ●	



CLASSIC No.40

est le classique parmi les fils à broder. Un fil à broder viscosé d'un brillant incomparable, disponible dans chacun des coloris illustrés.

CLASSIC No.30

est disponible dans les coloris marqués d'un ●. Le CLASSIC No.30, plus épais que le CLASSIC No.40, est idéal si on veut réduire le nombre de points d'une broderie ou obtenir des effets particuliers.

CLASSIC No.60

est disponible dans les coloris marqués d'un ●. Le CLASSIC No.60, le fil viscosé le plus fin, est idéal pour la broderie monogramme, le lettrage fin, les badges et les broderies compliquées et filigranes. Le CLASSIC No.60 permet de souligner et valoriser les détails d'une broderie.

CLASSIC No.12

est disponible dans les coloris marqués d'un ●. Le CLASSIC No.12 est le fil viscosé le plus épais du programme MADEIRA. Le CLASSIC No.12 convient tout spécialement à la réalisation de contours, de points décoratifs et de dessins chargés d'accents particuliers. Le CLASSIC No.12 s'utilise aussi très bien comme fil de surpiqure.

Attention:

Les diverses épaisseurs de fil reposent sur des structures différentes, ce qui influence le brillant et la nuance. Ainsi, il peut y avoir des différences par rapport aux nuances illustrées dans l'épaisseur standard No.40.

Multicolores/Ombrés:

La technique spéciale de teinture peut influencer la suite des coloris et son rendu. Ce qui fait justement le charme particulier de ce fil à effet.

CLASSIC 40 CLASSIC 30

1219 ●	
1227	
1391 ●	
1390 ●●	
1397	
1195 ●	
1097 ●	
1098	
1351	
1370 ●●	
1103 ●●●	
1479	
1302	
1079 ●●	
1250 ●●●	
1251 ●	
1051 ●●●	
1249 ●	
1377	
1050 ●	
1369	
1101 ●	
1047 ●●●	
1392 ●	
1396 ●	
1303	
1395	

CLASSIC 60 CLASSIC 12

1100 ●	
1099	
1495	
1451	
1048 ●	
1170 ●●	
1049 ●●	
1248	
1469	
1489	
1189	
1169 ●	
1448	
1104 ●	
1102	
1106 ●●	
1156 ●	
1140 ●	
1449	
1450	
1150 ●	
1323	
1193	
1350	
1190	
1196	
1352	

CLASSIC 40 CLASSIC 30



CLASSIC No.40

é a clássica de todas as linhas de bordar. Viscose Rayon com um brilho maravilhoso, disponível em todas as cores neste cartaz, é apropriada para todos os tipos de bordado.

CLASSIC No.30

estas cores são indicadas com um ●. CLASSIC Nº30 é mais espessa do que a CLASSIC Nº40 e é a ideal para reduzir a quantidade de pontos de bordado e produzir efeitos especiais admiráveis.

CLASSIC No.60

estas cores são indicadas com um ●. CLASSIC Nº60 é a linha de Viscose mais fina e delicada, ideal para monogramas, letras delicadas ou emblemas e bordados complicados ou recortados. CLASSIC Nº60 dá luminosidade e definição ao bordado.

CLASSIC No.12

estas cores são indicadas com um ●. CLASSIC Nº12 é a linha mais espessa no programa MADEIRA Viscose. Perfis especiais, pontos de fantasia e desenhos mais pesados, são a especialidade da CLASSIC Nº12. Devido à forma como é fabricada, CLASSIC Nº12 tem, também, bom desempenho no uso com máquinas de corte e cose.

Atenção:

Naturalmente que, linhas de diferentes espessuras têm diferentes processos de fabrico o que influencia as cores e o brilho, podendo tornar-se ligeiramente diferentes entre elas.

Multicolor/Ombré:

A técnica de tingido especial pode ter influência na aparência das cores bem como na sua ordem. Isso cria o carácter especial desta linha.

1270 ●	
1070 ●●●	
1225 ●●●	
1372	
1425	
1470	
1491 ●	
1255	
1344	
1338 ●	
1348	
1273	
1191	
1194	
1494	
1260	
1105 ●	
1157 ●●	
1357 ●	
1406	
1306	
1305	
1339	
1337	
1308	
1394 ●●	
1393	

CLASSIC 60 CLASSIC 12

1055 ●●●	
1256	
1173 ●●	
1272	
1056 ●	
1057 ●●●	
1126 ●	
1226 ●	
1257	
1258	
1158	
1058 ●●●	
1145 ●	
1059 ●●	
1127 ●	
1342	
1142 ●●	
1054 ●	
1259	
1053 ●	
1174 ●●	
1374 ●	
1358	
1036	
1445	
1430	
1431	

CLASSIC 40 CLASSIC 30



CLASSIC No.40

bütün nakış ipliklerinin klasiğidir. Harika bir parlaklığa sahip olan ve tüm nakış tiplerine uygun olan floş iplik bu kartelada görünen tüm renklerde mevcuttur.

CLASSIC No.30

renkleri • ile belirtilmiştir. CLASSIC No.40' tan daha kalındır ve az dikiş sayısı ile göz alıcı efektler üretmenizi sağlar.

CLASSIC No.60

renkleri • ile belirtilmiştir. Mevcut olan en ince nakış ipliğidir. CLASSIC No.60 ince ve belirgin detayların çok net olarak işlenmesini sağladığı için özellikle rozetlerin ve armaların üzerindeki harf nakışlarında ve ağır nakışlarda mükemmel sonuçlar verir. CLASSIC No.60 nakışa belirginlik ve netlik sağlar.

CLASSIC No.12

renkleri • ile belirtilmiştir. CLASSIC No.12 MADEIRA floş ürünleri arasında en kalın olanıdır. CLASSIC No.12 özel konturlara, dekoratif dikişlere ve ağır desenlere mükemmel uyum sağlar. Ayrıca CLASSIC No.12 yapısından dolayı harika bir overlok ipliğidir.

Dikkat:

Doğal olarak farklı iplik kalınlıkları farklı yapıya sahiptir. Renkler ve renk tonları ipliğin yapısından etkilenir ve aynı renklerde farklı iplik kalınlıkları arasında küçük farklılıklar gösterebilir.

Multicolour/Ombre:

Bu etkileyici ipliğin arkasındaki boya teknolojisi eşsiz bir renk dizilişi oluşturur ve boya partileri arasında özel etkiler yaratarak sizlerin yaratımlarına bireysellik katar.

1149 •	
1138 •	
1428	
1128 •	
1230	
1144 •	
1336 •	
1129 •	
1329 •	
1328	
1130	
1131	
1229	
1228	
1136 •	
1082 •	
1084 •	
1072 •	
1060 •	
1063	
1062 •	
1460	
1071 •	
1410	
1405	
1463	
1361	

CLASSIC 60 CLASSIC 12

1286	
1040 •	
1287 •	
1318	
1439	
1239	
1240	
1288	
1085 •	
1086 •	
1087	
1010 •	
1012 •	
1118 •	
1212 •	
1415 •	
1461	
1440	
1411	
1151	
1363	
1164	
1011 •	
1041 •	
1241 •	
1199	

CLASSIC 40



CLASSIC No.40

Это классические вышивальные нитки. Вискоза с её несравненным блеском предлагается во всех указанных тонах.

CLASSIC No.30

Нитки отмечены ●.
CLASSIC №30 толще ниток CLASSIC №40 и отлично подходит для вышивки, где Вы хотите уменьшить количество стежков, или когда нужно достигнуть особенных эффектов.

CLASSIC No.60

Нитки отмечены ●.
CLASSIC №60 - это тончайшая вискозная нить. Идеально применять её, например, для вышивок монограмм, надписей ярлычков, мелких шрифтов эмблем и других филигранных и сложных работ. CLASSIC №60 часто используется для того, чтобы подчеркнуть более четко детали вышивки.

CLASSIC No.12

Нитки отмечены ●.
CLASSIC №12 это наши самые толстые вискозные нитки. CLASSIC №12 отлично подходят для вышивки контуров и для декоративных строчек. CLASSIC №12 также подходит для использования на оверлоке.

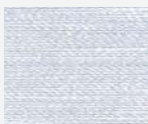
Внимание:

Нитки различной толщины имеют различную структуру нитки. От этого зависит блеск и цвет нити, таким образом, может возникнуть оптическое отличие от образцов цвета, которые подобраны в нитках CLASSIC №40 в цветовой карте ниток CLASSIC.

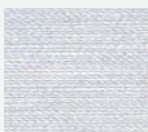
Мультиколор/Ombré:

Специальная техника крашения ниток может влиять на порядок окраса нитки и на её цветовой эффект. Это придаёт ниткам особенный шарм.

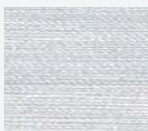
1001 ●
●
●



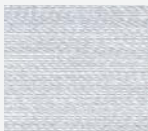
1002 ●
●



1003 ●
●
●



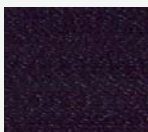
1004 ●



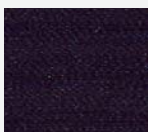
1005 ●



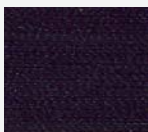
1000 ●
●
●



1006 ●



1007 ●



1008 ●



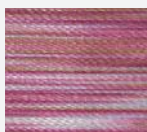
1009 ●



2001



2004



2003



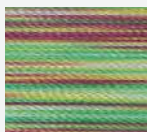
2006



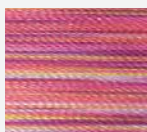
2002



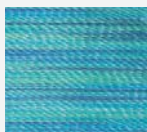
2005



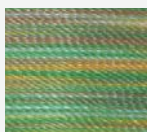
2000



2009



2007



2008



CLASSIC 40



CLASSIC No.40

线如其名经典系列No.40是最经典的绣花线。这款人造丝绣花线和它独有的绚丽光泽色卡上所列颜色均可提供。

CLASSIC No.30

可供选择的颜色由 ● 标明。经典系列No.30比经典系列No.40粗，用它可减少刺绣图案的针数或者用来取得特殊效果。

CLASSIC No.60

可供选择的颜色由 ● 标明。经典系列No.60是最纤细的人造丝绣花线。尤其适合刺绣难度高或精致的图案。例如：字符组合，徽章里的标题及细微点缀。经典系列No.60经常被选择用来增加图案细节的清晰度从而提高整体质感。

CLASSIC No.12

可供选择的颜色由 ● 标明。经典系列No.12是人造丝绣花线里最粗的一款。用经典系列No.12刺绣的轮廓和装饰线迹可赋予绣品独特风格。经典系列No.12也适合锁边机使用。

注意：

不同的绣花线细度在结构上有差异，它对绣花线的光泽和色调可产生影响。即便是同一色号但由于细度不同，可与色卡上经典系列No.40所展示的颜色有所差异。

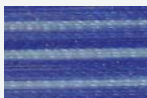
多色线：

线上颜色的顺序和整体效果受其特殊染色工艺影响，但这正是它独特的魅力所在。

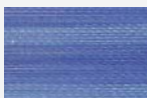
2026



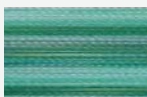
2038



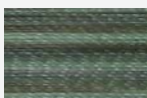
2016



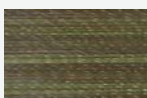
2039



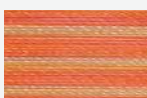
2033



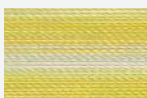
2029



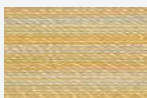
2053



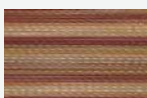
2040



2011



2024



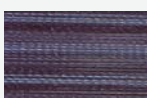
2018



2017



2034



17

Ombré

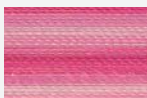
2014



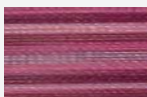
2050



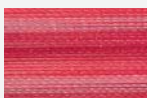
2051



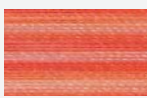
2055



2060



2022

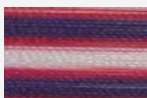


Ombré

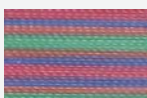
2103



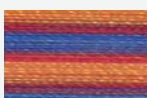
2105



2141



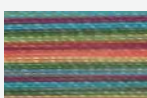
2142



2148



2149



18

Multicolour

CLASSIC

No.40 135 dtex x 2

Art. No. 910
10 x 5.000 m



Art. No. 911
10 x 1.000 m



65#9 - 75#11

CLASSIC

No.30 200 dtex x 2

Art. No. 921
10 x 3.000 m



Art. No. 914
10 x 25g



75#11

CLASSIC

No.60 84 dtex x 2

Art. No. 915
10 x 1.500 m



65#9

CLASSIC

No.12 330 dtex x 2

Art. No. 920
10 x 2.000 m



100#16



100% viscose filament

MADEIRA Garnfabrik
Zinkmattenstraße 38
Postfach 320
D-79003 Freiburg
Germany

Tel. + 49 761-510 40-0

Fax + 49 761-50 01 01

service@madeira.de



**QUALITY
MANAGEMENT**
Certificate

Voluntary participation in regular
monitoring according to ISO 9001:2000



**CONFIDENCE
IN TEXTILES**
Tested for harmful substances
according Oeko-Tex Standard 100
Test No. 94.0.6007 - FI Hohenstein

the choice of market leaders

www.madeira.com

MADEIRA®