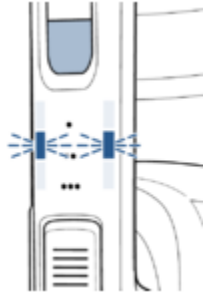
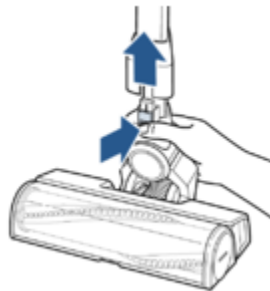


My ICON™ Cordless Vacuum brush is not turning | Support

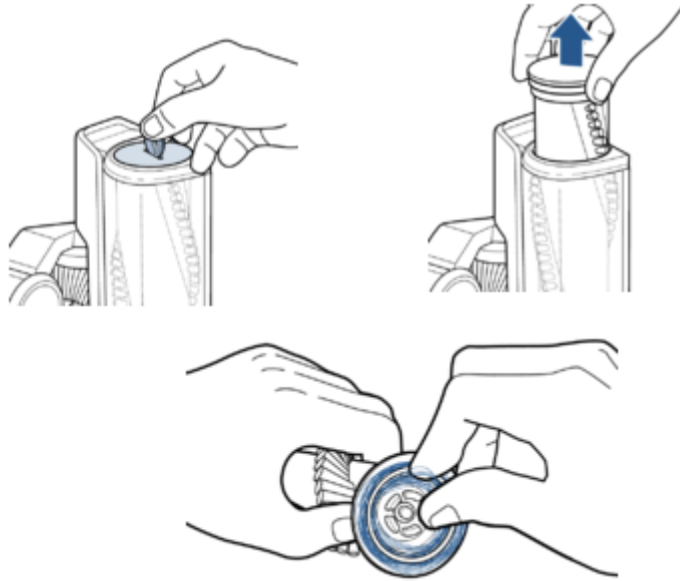
- If the blue lights next to the 2 dots are blinking there's an obstruction in the brush area



- Turn machine off and remove the foot assembly
- Press the release button at the bottom of the extension wand



- Remove the brush by unlocking the end using a coin or flat head screwdriver
- Pull brush out - remove all debris from brush and end caps



- Inspect brush, if damaged it should be replaced
 - Clear all debris from brush area as well as the suction channel
 - You should be able to see through the opening (where the extension wand attaches) into the brush area
 - If not, clear channel of all debris
 - When all is clear of debris slide brush roll back into place
 - Pushing down while turning, using a coin or flat headed screwdriver to lock brush into place
 - The raised line on the end of the brush should line up to the raised line on the foot
 - If the brush roll is not locked securely the brush will not turn
 - Reconnect foot to extension wand and to hand vac
 - Turn on & check brush roll
- If brush is still not turning, please [Contact Us](#)