

HEALTHYhome VACUUM™

USER'S GUIDE
61Z4 SERIES 220-240V



3 Safety Instructions

4 Product View

5 Assembly

6-9 Operation

10-15 Maintenance and Care

16-17 Troubleshooting

18 Consumer Services

**19 Replacement Parts
and Accessories**

20 Warranty



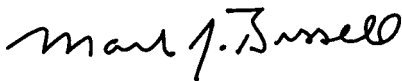
Thank you for buying a BISSELL Healthy Home Vacuum™

We're glad you purchased a BISSELL vacuum. Everything we know about floor care went into the design and construction of this complete, high-tech home cleaning system. By purchasing this product you are helping BISSELL with our commitment to reducing our impact on the environment through an expanding range of sustainable design efforts.

Your vacuum is well made, and we back it with a limited two year warranty. We also stand behind it with a knowledgeable, dedicated Consumer Services department, so, should you ever have a problem, you'll receive fast, considerate assistance.

My great-grandfather invented the floor sweeper in 1876. Today, BISSELL is a global leader in the design, manufacture, and service of high quality homecare products like your vacuum.

Thanks again, from all of us at BISSELL.



Mark J. Bissell
President and Chief Executive Officer

IMPORTANT SAFETY INSTRUCTIONS

When using an electrical appliance, basic precautions should be observed, including the following:

READ ALL INSTRUCTIONS BEFORE USING YOUR UPRIGHT VACUUM.

 **WARNING:** To reduce the risk of fire, electric shock, or injury:

- Do not use outdoors or on wet surfaces.
- Do not leave machine when it is plugged in.
- Do not use with damaged cord or plug.
- If appliance is not working as it should, has been dropped, damaged, left outdoors, or dropped into water, return it to a service agent.
- Do not pull or carry by cord, use cord as a handle, close door on cord, pull cord around sharp corners or edges, run appliance over cord, or expose cord to heated surfaces.
- Do not unplug by pulling on cord. Unplug by grasping plug.
- Do not handle plug or appliance with wet hands.
- Do not expose hair, loose clothing, fingers or body parts to openings or moving parts.
- Do not pick up hot or burning objects such as cigarettes, matches, or hot ashes.
- Do not pick up flammable or combustible materials (lighter fluid, petrol, kerosene, etc.) or use in the presence of explosive liquids or vapour.
- Do not use appliance in an enclosed space filled with vapours given off by oil base paint, paint thinner, some moth proofing substances, flammable dust, or other explosive or toxic vapours.
- Not intended for use by persons (including children) with reduced physical, sensory or mental capabilities, or lack of experience and knowledge, unless they have been given supervision or instruction concerning use of the appliance by a person responsible for their safety
- Young children should be supervised to ensure that they do not play with the appliance.

- Remove plug from electrical outlet before cleaning or maintaining the appliance.
- If the supply cord is damaged, it must be replaced by the manufacturer or its service agent in order to avoid a hazard.
- Do not pick up toxic material (chlorine bleach, ammonia, drain cleaner, petrol, etc.).
- Do not allow to be used as a toy.
- Do not use for any purpose other than described in this User's Guide.
- Use only manufacturer's recommended attachments.
- Do not use with any opening blocked; keep free of dust, lint, hair, and anything that may reduce air flow.
- Keep appliance on a level surface.
- Turn off all controls before plugging or unplugging.
- Be extra careful when cleaning stairs.
- This appliance is provided with double insulation. Use only identical replacement parts.
- Do not use without debris tank and/or filters in place.
- Pay close attention when working around children.
- Unplug before attaching TurboBrush™.
- Do not pick up hard or sharp objects such as glass, nails, screws, coins, etc.

SAVE THESE INSTRUCTIONS.

THIS MODEL IS FOR HOUSEHOLD USE ONLY.

IMPORTANT

FOR OPERATION ON A 220-240 VOLT A.C. 50/60 Hz POWER SUPPLY ONLY.

FOR RESIDENTS OF THE UNITED KINGDOM ONLY

If your appliance is fitted with a nonwireable BS 1363 plug it must not be used unless a 13 amp (ASTA approved to BS 1362) fuse is fitted in the carrier contained in the plug. (Spares may be obtained from your BISSELL supplier). If for any reason the plug is cut off, it must be disposed of, as it is an electric shock hazard should it be inserted into a mains socket.

Product view

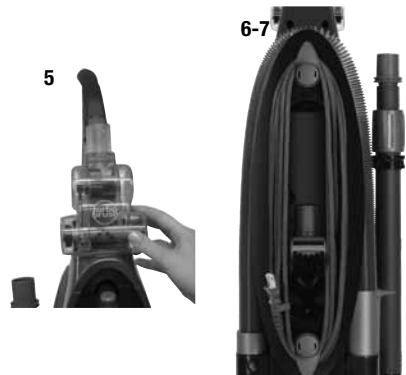
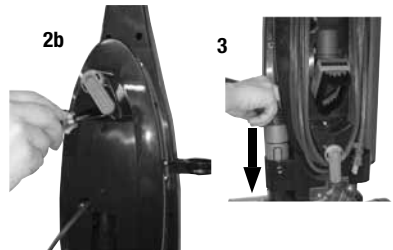
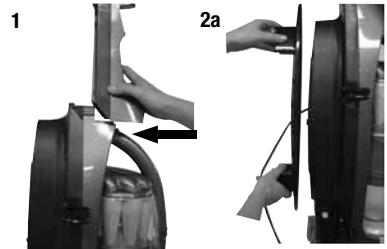
CAUTION:
Do not plug in your vacuum cleaner until you are familiar with all instructions and operating procedures.



Assembly

The only tool you'll need to assemble your vacuum cleaner is a Phillips head screwdriver.

1. Slide upper handle into lower handle by pushing forward. Insert two long screws into the holes marked with arrows and tighten both until snug.
2. Attach hose rack by placing the rack over the center back portion of the vacuum. Be sure to feed the power cord through the hole in the center of the rack. Line up both screws holes and use the two smaller screws to attach. Tighten both until snug.
3. Attach hose by placing the tabbed end of the hose cuff into the opening on the bottom left side of the vacuum. Make sure the tab on the hose cuff and the hole in the opening line up and snap into place. Place the working end of the hose into the opening on the lower right side of the vacuum. Push down firmly until it locks into place.
4. Arrange the hose so it lays between the vacuum and the rack.
5. Store the TurboBrush on the front of the handle by aligning the slot on the bottom with the tab on the handle. Snap into place.
6. Store the combination brush in the slot on the back of the vacuum as shown.
7. Store the extension wand in the storage area on the side of the vacuum. The crevice tool is stored inside the extension wand.



Operation

Transporting your vacuum

Use the handle on the front to carry the vacuum or place the vacuum in the upright position and tip back to roll on the rear wheels.


Releasing the power cord

The upper and lower cord wraps rotate to allow for quick and easy removal of the power cord.

Fingertip power control

The power button is located at the top of the vacuum handle.

To turn the vacuum on, press  button once.

To turn the vacuum OFF, press  button again.

Note: The rotating brush will not turn on unless the unit is in the reclined position and the brush button is on.

Handle positions

Press the handle release pedal with your foot to recline the vacuum cleaner.

Height adjustment

There are seven height settings available for various floor surfaces. Turn the dial on the foot of the cleaner to the desired setting.

Lowest setting – For low pile carpet or bare floors. To pick up debris it may be necessary to move up one setting.

Medium settings – For medium pile carpet.

High setting – For high pile and most shag carpet.

Note: For optimal carpet cleaning performance, adjust to the lowest practical setting. If your cleaner is difficult to push, adjust to the next higher setting.

If the dial is difficult to turn, tilt the cleaner back slightly to take the weight off the foot while turning.



ATTENTION:

Some Berber carpets have a tendency to fuzz with wear. Repeated strokes in the same area may aggravate this condition. Consider setting your cleaner on a higher than normal setting for this type of carpet.



Operation

Fingertip brush control

The rotating brush is turned on or off using the button located below the power button on the top of the handle. The brush will start rotating when the unit is reclined. The brush should be on for most carpeted floors. You may want to turn the brush off for bare floor cleaning or other delicate surfaces.

To turn the brush ON, press  button once.

To turn the brush OFF, press  button again.

Brush auto shut-off feature

When your vacuum is in the upright position, the brush will not rotate. The brush will rotate only when the vacuum is in the reclined position and the brush button is on.



Operation

Using the tools

- 1 Make sure the vacuum is in the upright position.
- 2 Remove the hose from the hose base. This automatically diverts the suction to the hose. Unwrap the hose from the vacuum.
- 3 Use the hose alone or with the telescoping extension wand. Attach any of the tools to the end of the hose or to the end of the telescoping extension wand.

TurboBrush

Use rotating brush action for small areas such as stairs and upholstery.

Note: Press gently when using the TurboBrush to gain maximum cleaning. Too much pressure could cause the brush to stop rotating.

Combination brush

Use longer, soft bristles for dusting.

Remove long bristle portion and use shorter, stiff bristles when agitation is needed to remove debris.

Crevice tool

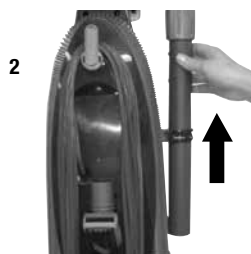
Use in tight narrow spaces

Telescoping extension wand

Use with desired attachment for a longer reach. To extend the wand, twist the collar to "Unlock" and push away from you. Twist the collar to "Lock" to lock into place. To retract, twist to unlock, pull toward you and twist to relock.

ATTENTION:

Always place the vacuum cleaner on the floor in its fully upright position when using tools. Placing the vacuum in this position automatically stops the rotating brush.



Tip:

Hair, string and small objects can block the vacuum hose or tools. Check them occasionally for obstructions.



CAUTION:

To avoid personal injury and to prevent the cleaner from falling when cleaning stairs, always place it at the bottom of the stairs.

Operation

Emptying the dirt container

Empty the dirt container as soon as the dirt reaches the "Full" line on the side of the container.

1. Press the release button on top of the carrying handle to remove the dirt container.

2. Choose an emptying method. Method #2 is recommended for allergy sufferers.

Method #1 – hold the dirt container over trash can and push the emptying button to open the bottom (2a). Close the bottom after the dirt empties.

Method #2 – place a plastic bag over the bottom of the dirt container. Push the emptying button through the plastic to open the bottom (2b). After the dust settles, close the bottom and remove the bag to discard.

3. Replace dirt container on cleaner by aligning the bottom and pushing back until it snaps into place.



CAUTION:

Make sure vacuum cleaner has been switched off and unplugged before removing dirt container.

1



2a



2b



3



Maintenance and care

Cleaning the dirt container

Additional steps can be taken to clean the dirt container as necessary.

1. Ensure the dirt container has been emptied.
2. Remove the lower portion by pressing the front latch on the upper portion as shown.
3. Clean the screen with a cloth or soft brush to remove dust or debris.
4. If desired, the lower dirt container may be washed in warm water. Make sure it is completely dry before reassembling. **Do not put in dishwasher.**
5. To reassemble, hold the carry handle and place the upper portion into the lower portion, lining up the front and back latches. Push down until both latches click into place. Make sure the dirt container is securely assembled before replacing it on machine.

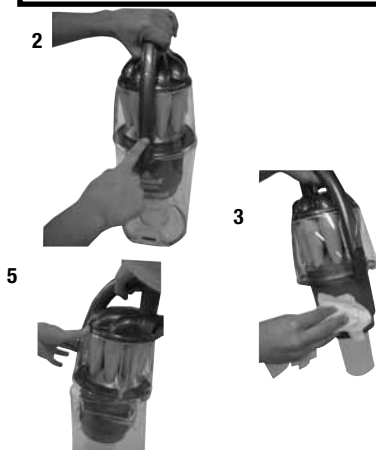
Cleaning the pre-motor filter

The pre-motor filter should be checked monthly and washed as needed to maintain performance. More or less frequent cleaning may be required based on individual vacuuming habits and types of debris picked up .

1. The filter is located in the door labeled "Filter" behind the dirt container. Push the tab at the top and swing the door down to access.
2. Remove foam filter and hold under running water to wash. Mild detergent may also be used if desired. Wring excess water from filter. **Air dry thoroughly before replacing.**

WARNING:

To reduce the risk of electric shock, turn power switch OFF and disconnect plug from electrical outlet before performing maintenance or troubleshooting checks.



WARNING:

Do not operate the cleaner with damp or wet filters or without all the filters in place.

NOTICE:

This product is intended for household use only and not for commercial or industrial use. Vacuuming of dust from products like plaster, concrete or ashes will damage the motor and void the warranty.

Maintenance and care

Replacing the HEPA filter cartridge

The HEPA filter cartridge should be replaced if machine performance is noticeably declining. More or less frequent replacing may be required based on individual vacuuming habits and types of debris picked up.

Note: To have the benefits of the Airtight™ HEPA System, you must use the BISSELL HEPA filter cartridge.

1. Remove the dirt container.
2. To remove the HEPA filter cartridge, pull up on the front of the filter door to unlatch. Lift up to access.
3. To check or remove, unscrew the center screw.
4. If necessary, replace the used HEPA filter cartridge with a new one.

Note: To avoid damaging the HEPA filter cartridge and reducing its filtration capabilities, be careful not to touch the filter material. The HEPA filter cartridge is not washable.

5. To ensure a tight seal be sure to tighten the filter cartridge screw until snug. **DO NOT OVER TIGHTEN.**
Make sure the filter door latches completely.



Maintenance and care

Clearing clogs

Low suction or poor pickup may be due to a clog in the vacuum cleaner. If you notice a change in the sound of the motor or a reduction in the spinning action in the dirt container, check for a clog.

If there is no suction or if suction is reduced at the hose, follow these steps to check for and clear the clog:

1. Turn power switch off.
2. Unplug cleaner from electrical outlet.
3. Check the pre-motor filter and clean as necessary (see *Cleaning your pre-motor filter*, page 10).
4. Check the HEPA filter cartridge and replace if necessary (see *Replacing the HEPA filter cartridge*, page 11).
5. Check to see if dirt container is full. Empty if needed.
6. Remove lower portion of dirt container. Clean the screen and check center tubes for dirt accumulation.
7. While dirt container is removed, check dirt inlet for clogs.
8. Remove the hose from the vacuum by pushing in on the tab on the bottom left of the vacuum. Once removed, straighten the hose and check for a clog.
9. Check diverter area at back of machine for diverter position and clogs. When the hose is removed from the hose base, the diverter should be up to the right. If a clog is visible near the diverter, the plastic cover may be removed to clear the clog by removing the 3 screws.



WARNING:

To reduce the risk of electric shock, turn power switch off and disconnect plug from electrical outlet before performing maintenance or troubleshooting checks.

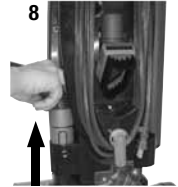
6



7



8



9a



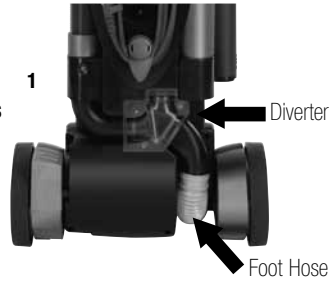
Maintenance and care

Clearing clogs continued

If suction is normal at the hose, follow these steps to check for and clear clogs for floor cleaning:

1. Check diverter area at back of machine for diverter position and clogs. When the hose wand is inserted in the base, the diverter should be up to the left. If a clog is visible near the diverter, the plastic cover may be removed to clear the clog by removing the 3 screws.
2. Check the foot hose for clogs (1). If you are not able to tell from the outside if a clog is present, remove the bottom 3 screws from the diverter cover to loosen and straighten the foot hose (2).

Remove any clogs found and fully reassemble the cleaner before attempting to check suction again or using the cleaner.



Thermal motor protection

An internal thermal protector has been designed into your vacuum to protect it from overheating. When the thermal protector activates, the main vacuum motor will stop operating. If this happens, proceed as follows.

1. Turn the vacuum OFF and unplug from electrical outlet.
2. Check the vacuum for the source of overheating problem (i.e. full dirt container, dirty filters or clog).
3. Fix the problem by following the steps in the maintenance section of the user guide.
4. When the motor cools for approximately 30 minutes, the thermal protector automatically resets and cleaning may continue. If the vacuum will not turn on or the thermal protector continues to activate, your vacuum may need servicing. Call BISSELL Consumer Services or visit the website to locate an authorized service center.

Note: The thermal protector controls the main vacuum motor only, not the brush motor. If the thermal protector activates, the brush will continue to operate normally; however, there will be no suction.

Maintenance and care

Brush reset

If something becomes lodged in the foot and the rotating brush shuts off, turn the vacuum off and unplug from the outlet. Remove the obstruction. The brush will automatically reset when the cleaner is plugged in and turned back on.

Brush maintenance

The rotating brush should be checked regularly for accumulating debris that might reduce the cleaning performance of your vacuum.

1. Unplug vacuum from electrical outlet.
2. Recline the handle and turn your vacuum over so the bottom side is up.
3. Carefully cut away any visible hair, fibers or debris from the brush roll.

Do not attempt to disassemble the vacuum foot or to remove the brush roll. If you feel it needs to be checked or replaced, call BISSELL Consumer Services or visit the website to locate an authorized service center.

Belt maintenance

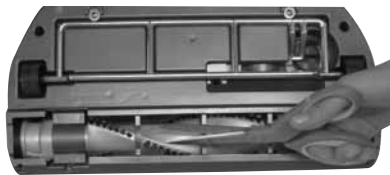
The brush belt is designed to last the useful life of the vacuum when used according to all instructions in the user guide under normal household conditions. If you feel that it needs to be checked or replaced, call BISSELL Consumer Services or visit the website to locate an authorized service center. Do not attempt to disassemble the vacuum foot to change the belt.



CAUTION:

To reduce the risk of injury from moving parts, turn off the vacuum cleaner and disconnect power plug from electrical outlet.

3



Maintenance and care

Changing the light bulb

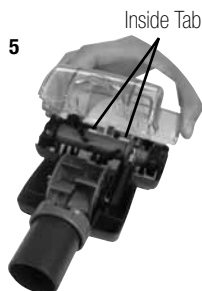
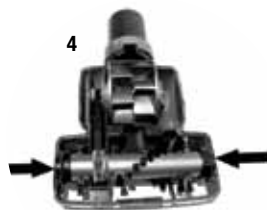
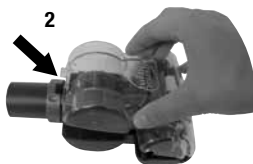
1. Turn power button off.
2. Unplug vacuum from electrical outlet.
3. Recline handle for easier access to light bulb. Remove 2 screws to lift off lens.
4. Remove the bulb by grasping bulb and pulling straight out of the socket. Install the new bulb by pushing gently into the socket until the bulb snaps into place.
5. Replace the lens back into the vacuum and secure with two screws.



TurboBrush maintenance

The TurboBrush should be checked regularly for clogs or debris wrapping around the brush.

1. Remove from hose or front of vacuum.
2. Twist collar so opening is at the top and lift top cover to remove.
3. Remove the brush from the belt and clean debris.
4. Replace the brush inside the belt and place ends into slots on sides as shown.
5. Reposition top cover making sure to line up inside tab at the front with the opening on the cover. Twist collar until opening is at the bottom to lock into place.



Troubleshooting



WARNING:

To reduce the risk of electric shock, turn power OFF and disconnect plug from electrical outlet before performing maintenance or troubleshooting.

Vacuum cleaner won't turn on

Possible causes

1. Power cord not plugged in
2. Thermal protector activated
3. Upper handle not fully attached

Brush not rotating

Possible causes

1. Brush button turned to "OFF"
2. Vacuum is in upright position
3. Brush is jammed
4. Brush needs to be reset
5. Upper handle not fully attached

Vacuum cleaner won't pick up or low suction

Possible causes

1. Incorrect height setting
2. Hose not properly positioned
3. Dirt container not installed properly
4. Dirt container full
5. Clog in cleaner
6. Filters are dirty
7. Hose not properly attached
8. Filter door and/or gasket missing or not installed properly

Remedies

1. Check electrical plug
2. Allow cleaner to cool for 30 minutes, see pg. 13
3. Remove upper handle and re-attach

Remedies

1. Make sure brush button is in "ON" position
2. Recline vacuum to operate brush
3. Remove obstruction/debris or unplug cleaner to reset brush, see page 14
4. Unplug cleaner to reset brush, see page 14
5. Remove upper handle and re-attach

Remedies

1. Turn dial to lower setting
2. Make sure hose is fully seated in hose base and diverter is seated up to the left
3. Check assembly of upper and lower portions, correctly position and snap into place
4. Empty dirt container
5. Follow instructions on pg. 12-13 for clearing clogs
6. Check and clean foam filter, check and replace HEPA filter cartridge if needed
7. Make sure hose cuff is locked into the bottom left side of vacuum
8. Check filter door and gasket for proper position

Troubleshooting

Vacuum cleaner is difficult to push

Possible causes

1. Incorrect height setting

Remedies

1. Turn dial to higher setting

Visible dust escaping from cleaner

Possible causes

1. Filter door and/or gasket missing or not installed properly
2. Foam filter missing or not installed properly
3. HEPA filter cartridge missing or not installed properly
4. Dirt container not installed properly
5. Dirt container not assembled properly
6. Hose not installed properly
7. Hole or crack in hose

Remedies

1. Check filter door and gasket for proper position
2. Check foam filter for proper position
3. Check HEPA filter cartridge for proper position
4. Make sure dirt container is properly positioned and snapped into place
5. Check screen, upper and lower portions of the dirt container for proper assembly
6. Make sure hose is fully seated in hose base, and that the hose is assembled correctly to the unit, see page 5. Also make sure foot hose is properly attached to diverter area
7. Check hose for holes or cracks and replace if needed

Other maintenance or service not included in the manual should be performed by an authorized service representative.

Thank you for selecting a BISSELL product.

Please do not return this product to the store.

BISSELL Consumer Services

If your BISSELL product should require service:

In the UK, Australia or New Zealand, call BISSELL Consumer Services at the numbers below and we will give you the location of a BISSELL Authorized Service Center in your area. For all other countries, contact your local in country distributor for questions, service, or repair.

If you have questions about your warranty or need replacement parts please contact the numbers below.

For UK inquiries:

Monday - Thursday 9 am — 5 pm

Friday 9 am — 4 pm

BISSELL Homecare (Overseas) Inc.

The Boat Yard

105 Straight Road

Old Windsor

Berkshire, SL4 2SE

United Kingdom

Telephone: 0844-888-6644

For Australian inquiries:

Monday - Friday 9 am — 5 pm

BISSELL AUSTRALIA PTY LIMITED

42 Rocco Drive

Scoresby 3179

Victoria

Australia

Telephone: 1-800-811-183

For New Zealand inquiries:

Monday - Friday 9 am — 5 pm

Parex Industries Ltd.

5 Tolich Place

Henderson 0610

Auckland

New Zealand

Telephone: 0800-247-735

For all other inquiries:

Monday - Friday 8 am — 4 pm

BISSELL Homecare, Inc.

PO Box 1888

Grand Rapids, Michigan 49501 USA

Telephone: 01-616-453-4451

Fax: 01-616-453-1383

Or visit the BISSELL website - www.bissell.com

When contacting BISSELL, have model number of unit available.

Please record your Model Number: _____

Please record your Purchase Date: _____

Note: Please keep your original sales receipt. It provides proof of date of purchase in the event of a warranty claim. See Warranty on page 20 for details.

Please do not return this product to the store.

Replacement parts

Item	Part No.	Part Name
1	48G7	HEPA Filter Cartridge
2	63M7	Foam Filter
3	203-1362	TurboBrush
4	203-1364	Telescoping Wand
5	203-1365	Combination Brush
6	203-1363	Crevice Tool
7	203-1382	Contour Tool
8	203-1485	Hose
9	203-1469	Light Bulb

1



2



3



4



5



6



7



8



9



Warranty - BISSELL Healthy Home Vacuum™

This warranty gives you specific legal rights, and you may also have other rights which may vary from country to country. If you need additional instruction regarding this warranty or have questions regarding what it may cover, please contact BISSELL Consumer Services by telephone, or regular post as described below, or contact your local in country distributor.

Limited Two Year Warranty

Subject to the *EXCEPTIONS AND EXCLUSIONS identified below, BISSELL Homecare, Inc., will replace (with new or remanufactured components), at BISSELL's option, free of charge from the date of purchase by the original purchaser, for two years any defective or malfunctioning part do to manufacturers defect.

This warranty applies to product used for personal, and not commercial or rental service. This warranty does not apply to fans or routine maintenance components such as filters, belts, or brushes. Damage or malfunction caused by negligence, abuse, or use not in accordance with the User's Guide is not covered.

For UK inquiries:

Monday - Thursday 9 am — 5 pm
Friday 9 am — 4 pm

BISSELL Homecare (Overseas) Inc.

The Boat Yard
105 Straight Road
Old Windsor
Berkshire, SL4 2SE
United Kingdom
Telephone: 0844-888-6644

For New Zealand inquiries:

Monday - Friday 9 am — 5 pm

Parex Industries Ltd.

5 Tolich Place
Henderson 0610
Auckland
New Zealand
Telephone: 0800-247-735

For Australian inquiries:

Monday - Friday 9 am — 5 pm

BISSELL AUSTRALIA PTY LIMITED

42 Rocco Drive
Scoresby 3179
Victoria
Australia
Telephone: 1-800-811-183

For all other inquiries:

Monday - Friday 8 am — 4 pm

BISSELL Homecare, Inc.

PO Box 1888
Grand Rapids, Michigan 49501 USA
Telephone: 01-616-453-4451
Fax: 01-616-453-1383

BISSELL HOME CARE INC. IS NOT LIABLE FOR INCIDENTAL OR CONSEQUENTIAL DAMAGES OF ANY NATURE ASSOCIATED WITH THE USE OF THIS PRODUCT. BISSELL'S LIABILITY WILL NOT EXCEED THE PURCHASE PRICE OF THE PRODUCT.

*EXCEPTIONS AND EXCLUSIONS FROM THE TERMS OF THE LIMITED WARRANTY

THIS WARRANTY IS EXCLUSIVE AND IN LIEU OF ANY OTHER WARRANTIES EITHER ORAL OR WRITTEN. ANY IMPLIED WARRANTIES WHICH MAY ARISE BY OPERATION OF LAW, INCLUDING THE IMPLIED WARRANTIES OF MERCHANTABILITY AND FITNESS FOR A PARTICULAR PURPOSE, ARE LIMITED TO THE TWO YEAR DURATION FROM THE DATE OF PURCHASE AS DESCRIBED ABOVE.



©2010 BISSELL Homecare, Inc.
Grand Rapids, Michigan
All rights reserved. Printed in China
Part Number 110-4205
Rev 01/10
Visit our website at:
www.bissell.com