

STEAM mop™

USER'S GUIDE
90T1 SERIES 220-240V



3 Safety Instructions

4 Product View

5 Assembly

6 Special Features

6-8 Operation

8-9 Maintenance and Care

9 Troubleshooting

10 Consumer Services

11 Replacement Parts

12 Warranty



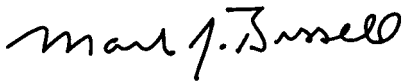
Thanks for buying a BISSELL Steam Mop

We're glad you purchased a BISSELL Steam Mop. Everything we know about floor care went into the design and construction of this complete, high-tech home cleaning system.

Your Steam Mop is well made, and we back it with a limited one-year warranty. We also stand behind it with a knowledgeable, dedicated Consumer Services department, so, should you ever have a problem, you'll receive fast, considerate assistance.

My great-grandfather invented the floor sweeper in 1876. Today, BISSELL is a global leader in the design, manufacture, and service of high quality homecare products like your Steam Mop .

Thanks again, from all of us at BISSELL.



Mark J. Bissell
President and Chief Executive Officer

IMPORTANT SAFETY INSTRUCTIONS

When using an electrical appliance, basic precautions should be observed, including the following:

READ ALL INSTRUCTIONS BEFORE USING STEAM MOP.

Always connect to a properly Earthed outlet. Unplug from outlet when not in use and before conducting maintenance or troubleshooting.

WARNING: To reduce the risk of fire, electric shock, or injury:

- Use indoors only
- Do not immerse
- Use only on surfaces moistened by cleaning process
- Do not leave machine when it is plugged in
- Do not service machine when it is plugged in
- If the supply cord is damaged, it must be replaced by the manufacturer or its service agent in order to avoid a hazard
- Do not use machine if it has been dropped, damaged, left outdoors or dropped into water
- Do not expose to rain, store indoors
- Do not pull or carry by cord, use cord as a handle, close door on cord, pull cord around sharp corners or edges, run appliance over cord, or expose cord to heated surfaces
- Do not carry the appliance while in use
- Do not unplug by pulling on cord; unplug by grasping plug not the cord
- Do not handle plug or appliance with wet hands
- Do not put any object into appliance openings, use with blocked opening or restrict air flow
- Do not expose hair, loose clothing, fingers or body parts to openings or moving parts
- Do not pick up hot or burning objects
- Do not pick up flammable or combustible materials (lighter fluid, petrol, kerosene, etc.) or use in the presence of explosive liquids or vapours
- Do not use appliance in an enclosed space filled with vapours given off by oil base paint, paint thinner, some moth proofing substances, flammable dust, or other explosive or toxic vapours
- Remove plug from electrical outlet before cleaning or maintaining the appliance


- Not intended for use by persons (including children) with reduced physical, sensory or mental capabilities, or lack of experience and knowledge, unless they have been given supervision or instruction concerning use of the appliance by a person responsible for their safety
- Young children should be supervised to ensure that they do not play with the appliance
- Do not pick up toxic material (chlorine bleach, ammonia, drain cleaner, petrol, etc.)
- Do not modify the Earthed plug
- Do not allow to be used as a toy
- Do not use for any purpose other than described in this User's Guide
- Use only manufacturer's recommended attachments
- Use only cleaning products formulated by BISSELL for use in this appliance to prevent internal component damage
- Keep openings free of dust, lint, hair, etc.
- Keep appliance on a level surface
- Turn off all controls before unplugging
- Be extra careful when cleaning stairs
- Liquid or steam must not be directed towards equipment containing electrical components
- Pay close attention when working around children

SAVE THESE INSTRUCTIONS.

THIS MODEL IS FOR HOUSEHOLD USE ONLY.

 **WARNING:** This appliance must be Earthed.

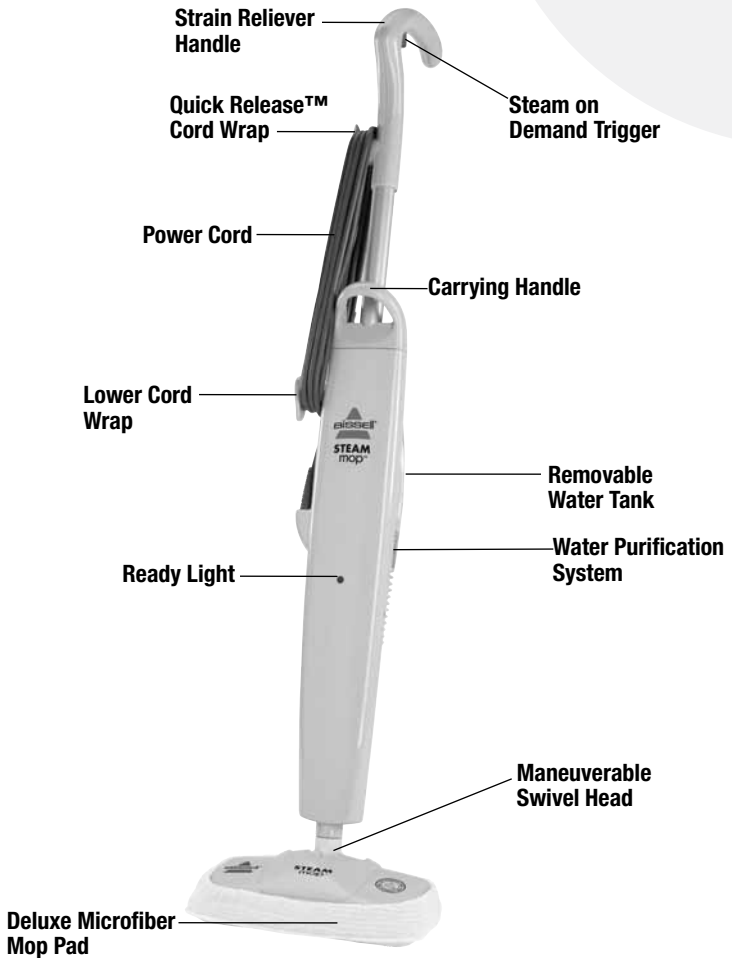
 The symbol  means WARNING: Danger of scalding.

 Surface may be hot. Avoid contact.

IMPORTANT FOR OPERATION ON A 220-240 VOLT A.C. 50/60 Hz POWER SUPPLY ONLY.

If your appliance is fitted with a nonrewireable BS 1363 plug it must not be used unless a 13 amp (ASTA approved to BS 1362) fuse is fitted in the carrier contained in the plug. Spares may be obtained from your BISSELL supplier. If for any reason the plug is cut off, it must be disposed of, as it is an electric shock hazard should it be inserted into a 13 amp socket.

Product view



For replacement parts and additional accessories, see page 11

Assembly

Your Steam Mop assembles quickly and easily. The only thing you will need for assembly is a Phillips head  screwdriver.

Your Steam Mop is packaged with the following items:

Handle assembly

Lower body with water purification system

Swivel head


Removable water tank

1 large Philips head screw

1 small Philips head screw

2 deluxe mop pads



1. Attach lower body to maneuverable swivel head.
2. Secure swivel head with small Phillips head screw. Tighten until secure.
3. Slide handle assembly down into lower body until it will go no further.
4. Secure the handle by placing the large Phillips head  screw through the screw opening in the lower body and into the rear of the handle assembly. Tighten with screwdriver until secure.
5. Slide water tank onto lower body by lining up vertical glides and gently sliding tank into place.

Steam Mop assembly is now complete.

Tip:

Do not attempt to use your Steam Mop without water in the tank.

Special features

Removable water tank

The water tank is located on the back of the Steam Mop. It can be refilled with water any time during use. Distilled or demineralized water may be used in place of tap water.

Do not use chemicals with your Steam Mop.

Water purification system

This filter removes minerals and other impurities from tap water, preventing water deposits from damaging your Steam Mop. It should be replaced when the bright green grains turn blue. To maximize performance of the filter, distilled water may be used.

Ready light

The ready light will glow when tap water has been converted to steam and the Steam Mop is ready to use.

Steam on demand trigger

Press to release steam.

Maneuverable swivel head

Allows you to clean in tight spaces and under cabinets.

Deluxe microfiber mop pads

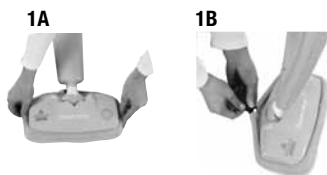
Reuseable microfiber mop pad is machine washable and safe for all hard floor surfaces.

Operation

Getting ready

The mop pad may have already come attached to the swivel head, if not follow steps 1A and 1B below.

1. Attach mop pad.
 - A. Set swivel head in mop pad, making sure the drawstring is located on the back.
 - B. Tighten mop pad by pulling on the drawstring while pressing on toggle.



Operation

Getting ready continued

2. Fill the water tank.
 - A. Remove tank by lifting straight up and away from unit.
 - B. Unscrew cap at bottom of water tank and remove the insert assembly.
 - C. Fill water tank with water. For best results, water should be at room temperature.
 - D. Replace insert assembly and cap, tighten until snug.
 - E. Replace water tank by lining up vertical guides and gently sliding tank into place.
3. Twist the Quick Release cord wrap clockwise to unwrap the power cord completely and plug into a proper outlet as described on the Important Safety Instructions, page 3.
4. The ready light will illuminate when the Steam Mop is ready for use.

Before you clean

Thoroughly sweep or vacuum floor prior to cleaning with the Steam Mop.

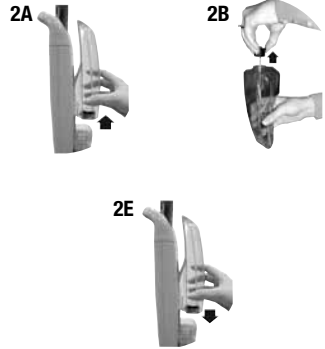
Cleaning hard floors

Your Steam Mop is designed to clean hard floor surfaces such as ceramic tile, vinyl, laminate, marble, stone and sealed hard wood floors. Use of your Steam Mop on waxed or some unwaxed floors may result in a diminished glossiness. The Steam Mop is not for use on unsealed wood floors. Ensure the Steam Mop is thoroughly tested in an inconspicuous area prior to mopping a large floor area. Also, be sure to check the care instructions from your flooring manufacturer.

1. When the ready light illuminates, begin cleaning by slowly passing over surface while pressing the steam on demand trigger to emit steam as needed.

NOTE: The trigger does not need to be depressed at all times for Steam Mop to work satisfactorily.

2. To sanitize an area of your floor (attack invisible germs and bacteria) leave the Steam Mop over area for a minimum 15 seconds, but no longer than 20 seconds. For larger areas, overlap swivel head placement.
3. When the Steam Mop stops emitting steam, simply remove the water tank, refill and continue cleaning.



WARNING:
Never put descaling, aromatic, alcoholic, or detergent products into the steam cleaner, as this may damage it or make it unsafe for use.

CAUTION:
The Steam Mop generates hot steam, so when depressing the trigger to apply steam, ensure the Steam Mop is moving continuously. Prolonged application of steam in one area increases the risk of damage to the surface treatment of timber floors.

Operation

Carpet Refresher Attachment (select models)

This accessory is recommended for the refreshing of carpets. Once the Steam Mop is cradled in the carpet refresher attachment, it will easily glide over the carpet.

NOTE: Always be sure a mop pad is in place before placing in carpet refresher attachment. Only white mop pads should be used with the carpet attachment. Do not use carpet attachment on spots or stains or glide it over the same spot for longer than 20 seconds.

1. Attach the mop pad to the swivel mop head as directed in step 1 on page 6.
2. Place the swivel mop head, with a white mop pad attached, in the carpet refresher attachment. **Note:** The Steam Mop rests in the carpet refresher attachment and may not stay attached to the swivel mop head. It is meant to glide over the carpet.
3. Fill the water tank with water. Begin refreshing your carpet or rug by pushing the Steam Mop in a forward and backward motion, releasing steam as you go.
4. When you have finished refreshing your carpet or rug, unplug the Steam Mop and remove from the carpet or rug.

NOTE: Move the Steam Mop and carpet refresher attachment in a continuous motion until you are finished. This product is not intended to be used as a carpet cleaner, only a carpet refresher or deodorizer. Never attempt to use the Steam Mop on carpet without the carpet refresher attachment in place. **DO NOT** leave the Steam Mop in a stationary position.



Tip:

During first use, it may take several seconds for the Steam Mop to begin steaming. The water needs to flow through the filter to the heater. This delay will only occur during initial use or when using a new filter.



CAUTION:

Upright storage of the Steam Mop with a wet mop pad may result in the formation of white marks on your floor. To remove the white marks, clean area with vinegar.

Maintenance and care

When you're done

1. Unplug power cord from outlet.
2. Carefully remove mop pad from swivel head, as mop pad and lower assembly will be hot.
3. Any water remaining in the water tank should be emptied prior to machine storage.
4. Mop pad can be machine washed in hot water. Tumble dry on low heat or air dry.
5. Wrap power cord around Quick Release cord wrap on side of Steam Mop.

Tip:

Using distilled or demineralized water will maximize the performance of your filter.

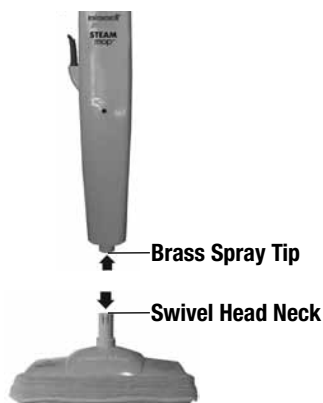
Maintenance and care

When you're done continued

6. Wipe all surfaces of Steam Mop with a soft cloth. Store upright in a protected, dry area.

IMPORTANT: Do not perform the maintenance in the note below until the unit has had time to cool.

NOTE: If steam output is reduced, the nozzle may be blocked. To remedy, unplug unit, remove swivel head from lower body and pour vinegar through center tube of swivel head "neck". Clear nozzle by inserting a paper clip into the brass spray tip located in bottom of lower body.



Replacing the water purification system

If you fill your Steam Mop cleaner with normal tap water, it is essential to check the water purification system and replace it when it is no longer effective. Change the filter when the bright green grains turn blue. If the filter is not changed at the appropriate time, calcium deposits will accumulate on the heating element, causing damage or reduced performance.

Using distilled or demineralized water will maximize the performance of your filter.

To order a replacement filter refer to the replacement parts section on page 11.

Tip:

Be sure to use only a BISSELL filter in your Steam Mop.

Troubleshooting

Reduced steam or no steam.

Possible Cause

1. Water tank empty
2. Depleted filter
3. Blocked steam nozzle

Remedies

1. Fill tank
2. Replace filter
3. Refer to NOTE above

Water is left on floor.

Possible Cause

1. Mop pad is too wet

Remedies

1. Change mop pad

White marks left on floor.

Possible Cause

1. Upright storage with a wet mop pad left on

Remedies

1. Clean area with vinegar to remove white mark

Other maintenance or service not included in the manual should be performed by an authorized service representative.

Thank you for selecting a BISSELL product.

Please do not return this product to the store.

BISSELL Consumer Services

If your BISSELL product should require service:

In the UK, Australia or New Zealand, call BISSELL Consumer Services at the numbers below and we will give you the location of a BISSELL Authorized Service Center in your area. For all other countries, contact your local in country distributor for questions, service, or repair.

If you have questions about your warranty or need replacement parts please contact the numbers below.

For UK inquiries:

Monday - Thursday 9 am — 5 pm
Friday 9 am — 4 pm

BISSELL Homecare (Overseas) Inc.

The Boat Yard
105 Straight Road
Old Windsor
Berkshire, SL4 2SE
United Kingdom
Telephone: 0844-888-6644

For New Zealand inquiries:

Monday - Friday 9 am — 5 pm

Parex Industries Ltd.

5 Tolich Place
Henderson 0610
Auckland
New Zealand
Telephone: 0800-247-735

Or visit the BISSELL website - www.bissell.com

When contacting BISSELL, have model number of unit available.

Please record your Model Number: _____

Please record your Purchase Date: _____

Note: Please keep your original sales receipt. It provides proof of date of purchase in the event of a warranty claim. See Warranty on page 12 for details.

Please do not return this product to the store.

For Australian inquiries:

Monday - Friday 9 am — 5 pm

BISSELL AUSTRALIA PTY LIMITED

42 Rocco Dr.
Scoresby 3179
Victoria
Australia
Telephone: 1-800-811-183

For all other inquiries:

Monday - Friday 8 am — 4 pm

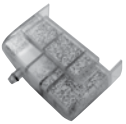
BISSELL Homecare, Inc.

PO Box 1888
Grand Rapids, Michigan 49501 USA
Telephone: 01-616-453-4451
Fax: 01-616-453-1383

Replacement parts - BISSELL Steam Mop

Item	Part No.	Part Name
1	218-5600	Filter
2	203-2167	Handle Assembly with Screw
3	203-2159	Water Tank with Cap and Insert
4	603-2046	Cap and Insert Assembly
5	203-2168	Storage Hook with Screws
6	32552	Deluxe Microfiber Mop Pads - 2 pack

1



2



3



4



5



6



Additional accessories

These items are available for purchase as accessories for your BISSELL Steam Mop.

Item	Part No.	Part Name
1	98T1	Carpet Refresher Attachment with 2 Mop Pads
2	3252E	29.5 mL Eucalyphus and Mint Natural Aroma
3	90M7E	946 mL Eucalyphus and Mint Scented Water

1



2



3



Warranty - BISSELL Steam Mop

This warranty gives you specific legal rights, and you may also have other rights which may vary from country to country. If you need additional instruction regarding this warranty or have questions regarding what it may cover, please contact BISSELL Consumer Services by telephone, or regular post as described below, or contact your local in country distributor.

Limited One Year Warranty

Subject to the *EXCEPTIONS AND EXCLUSIONS identified below, BISSELL Homecare, Inc., will replace (with new or remanufactured components), at BISSELL's option, free of charge from the date of purchase by the original purchaser, for one year any defective or malfunctioning part do to manufacturers defect.

This warranty applies to product used for personal, and not commercial or rental service. This warranty does not apply to fans or routine maintenance components such as filters, belts, or brushes. Damage or malfunction caused by negligence, abuse, or use not in accordance with the User's Guide is not covered.

For UK inquiries:

Monday - Thursday 9 am — 5 pm
Friday 9 am — 4 pm

BISSELL Homecare (Overseas) Inc.

The Boat Yard
105 Straight Road
Old Windsor
Berkshire, SL4 2SE
United Kingdom
Telephone: 0844-888-6644

For New Zealand inquiries:

Monday - Friday 9 am — 5 pm

Parex Industries Ltd.

5 Tolich Place
Henderson 0610
Auckland
New Zealand
Telephone: 0800-247-735

For Australian inquiries:

Monday - Friday 9 am — 5 pm

BISSELL AUSTRALIA PTY LIMITED

42 Rocco Dr.
Scoresby 3179
Victoria
Australia
Telephone: 1-800-811-183

For all other inquiries:

Monday - Friday 8 am — 4 pm

BISSELL Homecare, Inc.

PO Box 1888
Grand Rapids, MI 49501 USA
Telephone: 01-616-453-4451
Fax: 01-616-453-1383

BISSELL HOMECARE INC. IS NOT LIABLE FOR INCIDENTAL OR CONSEQUENTIAL DAMAGES OF ANY NATURE ASSOCIATED WITH THE USE OF THIS PRODUCT. BISSELL'S LIABILITY WILL NOT EXCEED THE PURCHASE PRICE OF THE PRODUCT.

***EXCEPTIONS AND EXCLUSIONS FROM THE TERMS OF THE LIMITED WARRANTY**

THIS WARRANTY IS EXCLUSIVE AND IN LIEU OF ANY OTHER WARRANTIES EITHER ORAL OR WRITTEN. ANY IMPLIED WARRANTIES WHICH MAY ARISE BY OPERATION OF LAW, INCLUDING THE IMPLIED WARRANTIES OF MERCHANTABILITY AND FITNESS FOR A PARTICULAR PURPOSE, ARE LIMITED TO THE ONE YEAR DURATION FROM THE DATE OF PURCHASE AS DESCRIBED ABOVE.



©2009 BISSELL Homecare, Inc.
Grand Rapids, Michigan
All rights reserved. Printed in China
Part Number 120-4160
Rev 11/09
Visit our website at:
www.bissell.com

