

Experts In Home Cleaning™

READYclean™

USER'S GUIDE

39Q6, 20W7 SERIES 220-240V

- 2 Thank You
- 3 Safety Instructions
- 4 Product View
- 5 Assembly
- 5-8 Operations
- 8 Maintenance and Care
- 9 Troubleshooting
- 10 Replacement Parts
- 11 Warranty
- 12 Consumer Care



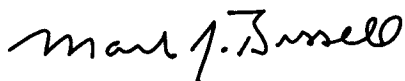
Thanks for buying a BISSELL ReadyClean™ Deep Cleaner

We're glad you purchased a BISSELL ReadyClean deep cleaner. Everything we know about floor care went into the design and construction of this complete, high-tech home cleaning system.

Your BISSELL ReadyClean deep cleaner is well made, and we back it with a limited two year warranty. We also stand behind it with a knowledgeable, dedicated Consumer Care department, so, should you ever have a problem, you'll receive fast, considerate assistance.

My great-grandfather invented the floor sweeper in 1876. Today, BISSELL is a global leader in the design, manufacture, and service of high quality homecare products like your ReadyClean deep cleaner.

Thanks again, from all of us at BISSELL.



Mark J. Bissell
Chairman & CEO

IMPORTANT SAFETY INSTRUCTIONS

When using an electrical appliance, basic precautions should be observed, including the following:

READ ALL INSTRUCTIONS BEFORE USING YOUR DEEP CLEANER.

WARNING - **To reduce the risk of fire, electric shock, or injury:**

- Use indoors only
- Do not immerse
- Use only on surfaces moistened by cleaning process
- Do not leave machine when it is plugged in
- Do not service machine when it is plugged in
- If the supply cord is damaged, it must be replaced by the manufacturer or its service agent in order to avoid a hazard
- Do not use machine if it has been dropped, damaged, left outdoors or dropped into water
- Do not expose to rain, store indoors
- Do not pull or carry by cord, use cord as a handle, close door on cord, pull cord around sharp corners or edges, run appliance over cord, or expose cord to heated surfaces
- Do not carry the appliance while in use
- Do not unplug by pulling on cord, unplug by grasping plug not the cord
- Do not handle plug or appliance with wet hands
- Do not put any object into appliance openings, use with blocked opening, or restrict air flow
- Do not expose hair, loose clothing, fingers or body parts to openings or moving parts
- Do not pick up hot or burning objects
- Do not pick up flammable or combustible materials (lighter fluid, petrol, kerosene, etc.) or use in the presence of explosive liquids or vapour
- Do not use appliance in an enclosed space filled with vapours given off by oil base paint, paint thinner, some moth proofing substances, flammable dust, or other explosive or toxic vapours

- Remove plug from electrical outlet before cleaning or maintaining the appliance
- Not intended for use by persons (including children) with reduced physical, sensory or mental capabilities, or lack of experience and knowledge, unless they have been given supervision or instruction concerning use of the appliance by a person responsible for their safety
- Young children should be supervised to ensure that they do not play with the appliance
- Do not pick up toxic material (chlorine bleach, ammonia, drain cleaner, petrol, etc.)
- Do not modify the Earthed plug
- Do not allow to be used as a toy
- Do not use for any purpose other than described in this User's Guide
- Use only manufacturer's recommended attachments
- Use only cleaning products formulated by BISSELL for use in this appliance to prevent internal component damage
- Keep openings free of dust, lint, hair, etc.
- Keep appliance on a level surface
- Turn off all controls before unplugging
- Be extra careful when cleaning stairs
- Pay close attention when working around children

SAVE THESE INSTRUCTIONS

THIS MODEL IS FOR HOUSEHOLD USE ONLY.

WARNING:

This appliance must be earthed.

IMPORTANT FOR OPERATION ON A 220-240 VOLT A.C. 50/60 Hz POWER SUPPLY ONLY.

If your appliance is fitted with a nonrewireable BS 1363 plug it must not be used unless a 13 amp (ASTA approved to BS 1362) fuse is fitted in the carrier contained in the plug. Spares may be obtained from your BISSELL supplier. If for any reason the plug is cut off, it must be disposed of, as it is an electric shock hazard should it be inserted into a 13 amp socket.

Product view



⚠ WARNING:
 To reduce the risk of fire and electric shock due to internal component damage, use only BISSELL cleaning formulas intended for use with the deep cleaner.

Cleaning fluid

Keep plenty of genuine BISSELL 2X formula on hand so you can clean and protect whenever it fits your schedule. Always use genuine BISSELL deep cleaning formulas. Non-BISSELL cleaning solutions may harm the machine and will void the warranty.



709 mL
 BISSELL
 2X Fibre
 Cleansing
 Advanced
 Formula with
 Scotchgard™
 protector
#62E5-E



709 mL
 BISSELL
 2X Multi-
 Allergen
 Advanced
 Formula with
 Scotchgard™
 protector
#89Q5-E



709 mL
 BISSELL 2X
 Pet Stain
 & Odor
 Advanced
 Formula with
 Scotchgard™
 protector
#99K5-E



473 mL
 BISSELL 2X
 Hard Floor
 Solutions
#56L9-E



709 mL
 BISSELL 2X
 Natural
 Orange
 Advanced
 Formula with
 Scotchgard™
 protector
#83P3-E



709 mL
 BISSELL
 2X Lavendar
 Essence
 Advanced
 Formula with
 Scotchgard™
 protector
#34B5-E



651 mL
 BISSELL
 Tough Stain
 Precleaner
#0400-E



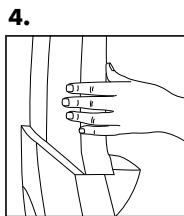
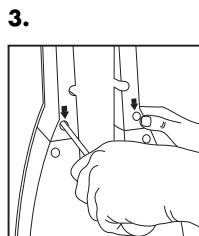
651 mL
 BISSELL
 Pet Stain
 & Odor
 Remover
#790-E

Assembly

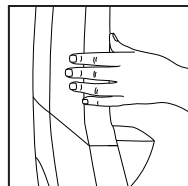
Your deep cleaner assembles quickly and easily. The only tool you will need for assembly is a Phillips head screwdriver.

1. Locate the screw pack, which is taped to the upper handle.
2. Slide the upper body onto the lower body, taking care not to leave a gap between the upper and lower body.
3. Firmly holding the upper body, screw the 2 screws into the holes marked with arrows.
TIP: If you are having difficulty tightening the screws, remove, re-insert, and tighten again.
4. After tightening the screws, ensure proper fit between the upper and lower body by trying to separate the two. If assembled properly, there should be no gap. If a gap appears between the two (see picture at right), continue to tighten the screws until no gap is present.
5. Slide upper handle into upper body by aligning the pin and sliding into place.
NOTE: Be sure to secure upper handle before lifting. Rotate handle clockwise to secure.
6. Place solution tank on back of unit.
7. Wrap power cord.

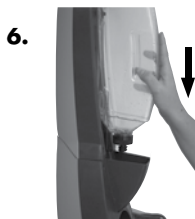
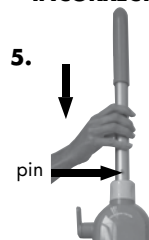
Assembly is now complete.



INCORRECT



CORRECT



Operations

Special Features

Scotchgard™ Protector Carpet protection applied at the mill typically wears down over time from heavy foot traffic and everyday cleaning, including deep cleaning. To help restore this important protection, only BISSELL offers cleaning formulas with Scotchgard protector. This offers extra protection against dirt and tough stains to keep your carpets looking good longer.



More than 7 million Australians suffer from asthma and allergies. The Sensitive Choice program has been developed by the National Asthma Council Australia to help Australians and New Zealanders make better lifestyle choices that may help manage asthma and allergies more effectively.

The BISSELL range of deep carpet cleaners and deep carpet cleaning formulas has been approved by the National Asthma Council Australia's Sensitive Choice program, and carries the Sensitive Choice butterfly logo. The Sensitive Choice blue butterfly symbol is a way of recognising products and services that support asthma and allergy care. Products that carry the blue butterfly may be better choices for people with asthma and allergies.

To learn more about managing asthma and allergies, visit the Sensitive Choice website at: www.sensitivechoice.com.au



Operations

Before you clean

1. Move furniture to another area if cleaning an entire room. (Optional)
2. Vacuum carpet thoroughly.
3. Plan your cleaning route to leave an exit path. It is best to begin cleaning in the corner farthest from your exit.
4. **Pre-Treating** (optional) Pre-treat stubborn stains and highly soiled carpet in hallways and other high-traffic areas.
 - 4a. Generously spray BISSELL Tough Stain Pre-cleaner evenly over soiled area.
Caution: DO NOT OVER WET CARPET
 - 4b. Wait 3-5 minutes before deep cleaning.

Fill the tank

1. Remove the solution tank by lifting it straight up, then away from the lower body.
2. Unscrew the black cap at the bottom of the solution tank.
3. Fill with hand hot (not boiling) tap water to the WATER line. Fill the rest of the tank with BISSELL 2X Formula to the FORMULA line. Replace and tighten the black cap.

Caution: Do not microwave or boil water before filling.

4. Place solution tank on lower body.

Carpet cleaning

1. Plug into proper outlet.
2. Adjust the retractable handle by turning counterclockwise and lifting the handle up. Turn clockwise to secure.
3. With foot press the red power lever, located on the back of the machine.

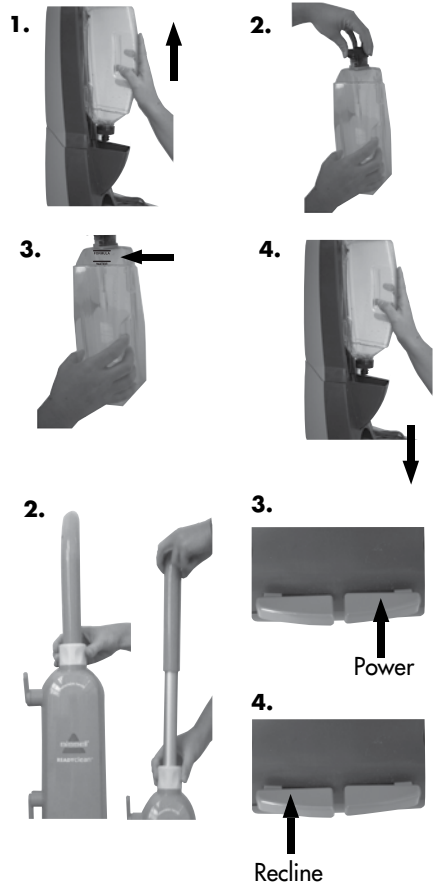
NOTE: Handle must be in the full upright position before cleaning.

4. With foot, press the recline lever located next to power lever.
5. Cleaning Strokes. While pressing the spray trigger, make one slow forward wet pass and another one back.

Caution: Do not overwet.

! WARNING:

To reduce the risk of fire, use only BISSELL advanced deep cleaning formula for full size machines in your deep cleaner. Use of cleaning formulas that contain lemon or pine oil may damage this appliance and void the warranty. Chemical spot cleaners or solvent-based soil removers should not be used. These products may react with the plastic materials used in your deep cleaner causing cracking or pitting.



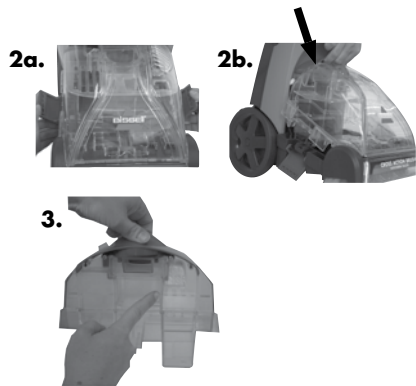
Operations

Carpet cleaning continued

6. Release the spray trigger and make one slow forward and backward pass over the same area.
7. Repeat steps 5 and 6 until solution being pulled up appears clean.
8. Empty the collection tank when dirty water reaches the full line, or when the solution tank is empty.

Empty the collection tank

1. With foot press the red power lever, to turn off and unplug power cord from outlet.
2. Remove the collection tank from base of unit.
 - 2a. Release collection tank latches (on each side) by pulling up from the bottom of latch and then out.
 - 2b. Carefully remove tank by lifting up on the tank handle.
3. Carry collection tank to a toilet or sink. To empty, pour out contents using opening at back of tank.
4. Rinse collection tank thoroughly and replace on unit.
5. Refill solution tank and continue cleaning.



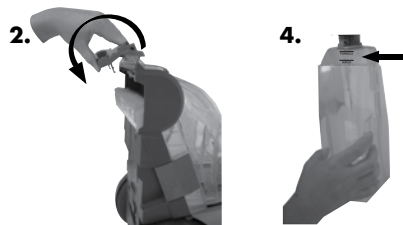
Hard floor cleaning

(Select models only)

1. Remove the collection tank (refer to steps 2a and 2b on page 6).
2. Attach the hard floor tool by hooking it into the front of the removable nozzle and rotate until it snaps firmly in place.
3. Replace the collection tank. Be sure to attach the two latches.
4. Fill the solution tank with hand hot (not boiling) tap water to the WATER fill line. Fill the rest with BISSELL 2X Hard Floor Solutions™ to FORMULA fill line.
5. Follow steps 1-8 under "Carpet Cleaning" on page 6 to continue cleaning.

⚠ WARNING:

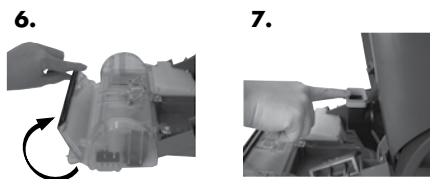
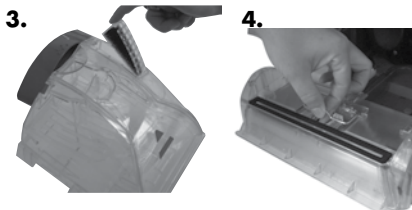
To reduce the risk of fire and electric shock when cleaning a hard floor, the BISSELL hard floor tool (203-5705) must be used and it must only be used with BISSELL 2X Hard Floor Solutions cleaning fluid intended for use with this appliance.



Operations

Cleaning after use

1. Unplug the unit.
 2. Remove and rinse collection tank thoroughly.
 3. Remove tank vent & foam filter (located on top of the collection tank) and rinse.
 4. Clean nozzle window by lifting latch and removing nozzle from machine. Rinse under running water.
 5. For 39Q6 series models, pop out CrossAction Brush by pushing the tabs away from each other and pushing down. Once the brush pops out, rinse and replace by snapping the tabs back into place.
 6. When finished replace nozzle and secure with latch.
- NOTE: For best results, it is recommended that the nozzle is cleaned after each use.**
7. Remove lint and hair from red gasket in base of unit. (Do not remove gasket)
 8. Replace the collection tank on the base of the machine and secure with latches.



Maintenance and care

Machine storage

For best results, a few simple steps can assure your machine is well maintained after your cleaning is complete.

1. Wrap power cord around Quick Release Cord Wrap™ on side of the machine.
2. Wipe all surfaces with a soft cloth. Store cleaner upright in a protected, dry area.

NOTE: You may have cleaning solution remaining in the solution tank. You may store your machine this way for the next cleaning task, but never keep dirty water in the collection tank.

⚠ WARNING:

To reduce the risk of injury from moving parts and/or electrical shock, turn power switch OFF and disconnect plug from electrical outlet before performing maintenance or troubleshooting checks.

⚠ CAUTION:

Do not store unit where freezing may occur. Damage to internal components may result.

Troubleshooting

Reduced Spray OR No Spray

Possible causes

1. Solution tank empty
2. Lint screen on solution tank cap clogged
3. Spray nozzle clogged
4. Upper handle is not in the upright and locked position
5. Upper body not attached properly

Remedies

1. Refill tank with water and formula
2. Soak solution tank cap in warm water and then rinse under running water
3. Clean spray nozzle by rinsing under water
4. Rotate the retractable handle lock, pull handle up and return the handle lock to the locked position.
5. Repeat steps 2-4 on page 5.

Deep cleaner not picking up cleaning solution

Possible causes

1. Collection tank not aligned/secured
2. Collection tank full
3. Removable nozzle installed improperly
4. Removable nozzle full of debris
5. Red lint screen under collection tank clogged

Remedies

1. Check tank alignment and secure with side latches
2. Empty tank
3. Unplug unit. Align two "hooks" into bottom first, then snap into place on top
4. Unplug unit. Remove nozzle and rinse under running water
5. Remove debris from lint screen

Other maintenance or service not included in the manual should be performed by an authorized service representative.

Thank you for selecting a BISSELL product.

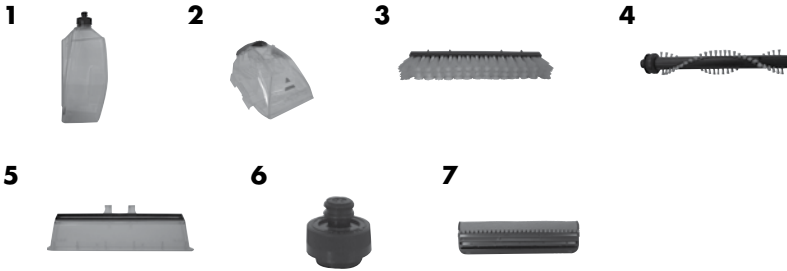
Please do not return this product to the store.

Replacement parts

Below please find a list of common replacement parts. While not all of these parts may have come with your specific machine, all are available to you for purchase, if desired.

Item	Part No.	Part Name
1	203-5661	Solution Tank (Includes Cap and Insert Assembly)
2	203-8246	Collection Tank
3	203-5545	CrossAction Brush (39Q6 series)
4	203-5546	DirtLifter™ PowerBrush (20W7 series)
5	203-8224	Nozzle
6	203-5541	Solution tank cap & insert
7	203-5705	Hard Floor Tool

*Not all parts are included with every model.



Cleaning Formula: Refer to bottom of page 4 of this guide for a full selection of cleaning formula available for purchase.

Warranty

This warranty gives you specific legal rights, and you may also have other rights which may vary from country to country. If you need additional instruction regarding this warranty or have questions regarding what it may cover, please contact BISSELL Consumer Care by E-mail, telephone, regular mail as described below, or contact your local in country distributor.

Limited Two Year Warranty

Subject to the *EXCEPTIONS AND EXCLUSIONS identified below, BISSELL will repair or replace (with new or remanufactured components or products), at BISSELL's option, free of charge from the date of purchase by the original purchaser, for two years any defective or malfunctioning part due to manufacturer defect.

This warranty applies to product used for personal, and not commercial or rental service. This warranty does not apply to fans or routine maintenance components such as filters. Damage or malfunction caused by negligence, abuse, neglect, unauthorized repair, or any other use not in accordance with the User's Guide is not covered.

BISSELL recommends that the original packaging be kept for the duration of the warranty period in case such need arises within the warranty period that the item need re-packing and transportation.

For Australian inquiries:

Monday – Friday 9 am - 5 pm

BISSELL AUSTRALIA PTY LIMITED

42 Roco Drive
Scoresby 3179
Victoria
Australia
Telephone: 1-800-811-183

For New Zealand inquiries:

Monday – Friday 9 am - 5 pm

Parex Industries LTD.

5 Tolich Place
Henderson 0610
Auckland
New Zealand
Telephone: 0800-247-735

For Middle East & Africa inquiries:

Sunday – Thursday 9 am - 6 pm

BISSELL Middle East & Africa

P.O. Box 61286
Office 017, Technopark Building
Jebel Ali Free Zone
Dubai
United Arab Emirates

*EXCEPTIONS AND EXCLUSIONS FROM THE TERMS OF THE LIMITED WARRANTY

BISSELL AND ITS IN-COUNTRY DISTRIBUTORS ARE NOT LIABLE FOR INCIDENTAL OR CONSEQUENTIAL DAMAGES OF ANY NATURE ASSOCIATED WITH THE USE OF THIS PRODUCT. BISSELL'S LIABILITY WILL NOT EXCEED THE PURCHASE PRICE OF THE PRODUCT.

THIS WARRANTY IS EXCLUSIVE AND IN LIEU OF ANY OTHER WARRANTIES EITHER ORAL OR WRITTEN. ANY IMPLIED WARRANTIES WHICH MAY ARISE BY OPERATION OF LAW, INCLUDING THE IMPLIED WARRANTIES OF MERCHANTABILITY AND FITNESS FOR A PARTICULAR PURPOSE, ARE LIMITED TO THE TWO YEAR DURATION FROM THE DATE OF PURCHASE AS DESCRIBED ABOVE.

FOR AUSTRALIAN CONSUMERS ONLY: OUR GOODS COME WITH GUARANTEES THAT CANNOT BE EXCLUDED UNDER THE AUSTRALIAN CONSUMER LAW. YOU ARE ENTITLED TO A REPLACEMENT OR REFUND FOR A MAJOR FAILURE AND FOR COMPENSATION FOR ANY OTHER REASONABLY FORESEEABLE LOSS OR DAMAGE. YOU ARE ALSO ENTITLED TO HAVE THE GOODS REPAIRED OR REPLACED IF THE GOODS FAIL TO BE OF ACCEPTABLE QUALITY AND THE FAILURE DOES NOT AMOUNT TO A MAJOR FAILURE.

THIS WARRANTY IS IN ADDITION TO OTHER RIGHTS OR REMEDIES UNDER LAW. NOTHING IN THIS WARRANTY EXCLUDES, LIMITS OR MODIFIES ANY LIABILITY OF BISSELL WHICH IS IMPOSED BY LAW, OR LIMITS OR MODIFIES ANY REMEDY AVAILABLE TO THE CONSUMER WHICH IS GRANTED BY LAW.

TO MAKE A CLAIM UNDER THIS WARRANTY CONTACT BISSELL AUSTRALIA PTY LTD (DETAILS ABOVE). CONTACT BISSELL PRIOR TO RETURNING ANY GOODS. WHERE AGREED, BISSELL WILL REIMBURSE REASONABLE POSTAGE / HANDLING COSTS (IF ANY) FOR RETURNING GOODS TO BISSELL.

If your BISSELL product should require service:

Call BISSELL Consumer Care at the numbers below and we will give you the location of a BISSELL Authorized Service Center in your area. If you have questions about your warranty or need replacement parts please contact the numbers below.

For Australian inquiries:

Monday – Friday 9 am - 5 pm

BISSELL AUSTRALIA PTY LIMITED

42 Roco Drive

Scoresby 3179

Victoria

Australia

Telephone: 1-800-811-183

For South African inquiries:

Monday – Friday 9 am - 5 pm

Tevo (Pty) Ltd.

PO Box 25234

Gateway 4321

South Africa

Telephone: +27 (0) 86-177-8888

Email: servicecentre@tevo.co.za

For New Zealand inquiries:

Monday – Friday 9 am - 5 pm

Parex Industries LTD.

5 Tolich Place

Henderson 0610

Auckland

New Zealand

Telephone: 0800-247-735

For all other inquiries:

Monday – Friday 8 am - 4 pm

BISSELL Homecare, Inc.

PO Box 1888

Grand Rapids, Michigan 49501 USA

Telephone: 01-616-453-4451

Fax: 01-616-453-1383

For Middle East & Africa inquiries:

Sunday – Thursday 9 am - 6 pm

BISSELL Middle East & Africa

P.O. Box 61286

Office 017, Technopark Building

Jebel Ali Free Zone

Dubai

United Arab Emirates

Or visit the BISSELL website - **www.bissell.com**

When contacting BISSELL, have model number of cleaner available.

Please record your Model Number: _____

Please record your Purchase Date: _____

NOTE: Please keep your original sales receipt. It provides proof of purchase date in the event of a warranty claim. See Warranty on page 11 for details.



Do not throw the appliance away with the normal household waste at the end of its life, but hand it in at an official collection point for recycling. By doing this you will help to preserve the environment.



Experts In Home Cleaning™

©2012 BISSELL Homecare, Inc
All rights reserved. Printed in China
Part Number 120-4578

Rev 7/12

Visit our website at:

www.bissell.com

Scotchgard is a trademark of 3M