

**Bissell®**

CLEANVIEW™  
LIFT-OFF®



1190 SERIES

# IMPORTANT SAFETY INSTRUCTIONS

## READ ALL INSTRUCTIONS BEFORE USING YOUR DEEP CLEANER.

When using an electrical appliance, basic precautions should be observed, including the following.

### **WARNING** TO REDUCE THE RISK OF FIRE, ELECTRIC SHOCK, OR INJURY:

- » Unplug from electrical socket when not in use and before cleaning, maintaining or servicing the appliance.
- » This appliance can be used by children aged from 8 years and above and persons with reduced physical, sensory or mental capabilities or lack of experience and knowledge if they have been given supervision or instruction concerning use of the appliance in a safe way and understand the hazards involved. Cleaning and user maintenance shall not be made by children without supervision.
- » Children should be supervised to ensure that they do not play with the appliance.
- » If the supply cable is damaged, it must be replaced by the manufacturer, its service agent or similarly qualified persons in order to avoid a hazard.
- » Do not run appliance over cable.
- » Keep hair, loose clothing, fingers, and all parts of body away from openings and moving parts of the appliance and its accessories.
- » Use only the type and amount of liquids specified under the Operations section of this guide.
- » Do not leave appliance when plugged in.
- » Always connect to a properly earthed electrical socket.
  - Do not modify earthed plug.
- » Use indoors only.
- » Do not allow to be used as a toy.
- » Use only as described in the user guide.

- » Use only manufacturer's recommended attachments.
- » Do not use with damaged cable or plug.
- » Do not immerse in water or liquid.
- » If appliance is not working as it should, has been dropped, damaged, left outdoors, or dropped into water; do not attempt to operate it and have it repaired at an authorized service center.
- » Liquid or steam must not be directed towards equipment containing electrical components.
- » Do not pull or carry by cable, use cable as a handle, close door on cable, or pull cable around sharp edges or corners.
- » Keep cable away from heated surfaces.
- » Do not unplug by pulling on cable.
- » To unplug, grasp the plug, not the cable.
- » Do not handle plug or appliance with wet hands.
- » Do not put any object into openings.
- » Do not use with any opening blocked; keep free of dust, lint, hair, and anything that may reduce air flow.
- » Turn off all controls before unplugging.
- » Use extra care when cleaning on stairs.
- » Do not use to pick up flammable or combustible liquids, such as petrol, or use in areas where they may be present.
- » Do not pick up toxic material (chlorine bleach, ammonia, drain cleaner, etc.)
- » Do not use appliance in an enclosed space filled with vapors given off by oil base paint, some mothproofing substances, flammable dust, or other explosive or toxic vapors.
- » Do not pick up hard or sharp objects such as glass, nails, screws, coins, etc.
- » Keep appliance on a level surface.
- » Do not carry appliance while in use.
- » Unplug before attaching the TurboBrush™ tool.

### **WARNING**

**TO REDUCE THE RISK OF FIRE AND ELECTRIC SHOCK, USE INDOORS ONLY . DO NOT IMMERSE. USE ONLY ON SURFACES MOISTENED BY THE CLEANING PROCESS. USE ONLY BISSELL CLEANING PRODUCTS INTENDED FOR USE WITH THIS MACHINE.**

### **WARNING**

**TO REDUCE THE RISK OF FIRE AND ELECTRIC SHOCK, ALWAYS INSTALL FLOAT BEFORE ANY WET PICK-UP OPERATION.**

## SAVE THESE INSTRUCTIONS

**FOR OPERATION ON A 220-240 VOLT A.C. 50-60 HZ POWER SUPPLY ONLY.**

This model is for household use only.

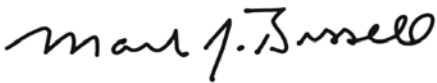
# Thanks for buying a BISSELL deep cleaner

We're glad you purchased a BISSELL deep cleaner. Everything we know about floor care went into the design and construction of this complete, high-tech home cleaning system.

Your BISSELL deep cleaner is well made, and we back it with a limited two-year guarantee. We also stand behind it with a knowledgeable, dedicated Consumer Care department, so, should you ever have a problem, you'll receive fast, considerate assistance.

My great-grandfather invented the floor sweeper in 1876. Today, BISSELL is a global leader in the design, manufacture, and service of high quality homecare products like your BISSELL deep cleaner.

Thanks again, from all of us at BISSELL.



Mark J. Bissell  
Chairman & CEO

Safety Instructions . . . . .	3
Product View . . . . .	4
Assembly . . . . .	5
Operations . . . . .	6-10
Maintenance & Care . . . . .	11-13
Troubleshooting . . . . .	14
Guarantee . . . . .	16
Consumer Care . . . . .	16

## TIPS

- » Deep cleaning carpeting regularly can reduce dust and allergens in your home.
- » Deep cleaning stairs and high-traffic areas on a regular basis helps prolong carpet life.

# Product View



- 1 Spray Trigger
- 2 Upper Handle
- 3 Upright Cleaning Mode Indicator Light
- 4 Carry Handle
- 5 Cleaning Tool (tools vary by model)
- 6 Formula & Water Tank
- 7 Power Button
- 8 Quick Release™ Cord Wrap
- 9 Power Cord
- 10 Dirty Tank

- 11 Flex Hose
- 12 Portable Spot Cleaning Release Pedal
- 13 EdgeSweep™ Brushes
- 14 Removeable Nozzle Assembly
- 15 Cord Clip
- 16 Tool Storage
- 17 Support Handle
- 18 Tool Storage (select models)
- 19 Hose Secure Latch
- 20 Recline Pedal

# Assembly

Your deep cleaner comes in two easy to assemble components:

## A. Upper handle

## B. Portable spot cleaner/Base

The only tool you will need to assemble your cleaner is a long Phillips screwdriver.

1. Slide the upper handle onto the body of the machine by guiding the 2 posts on the body into the opening on the upper handle.

2. Firmly holding the upper handle in place, screw 2 screws into the marked holes at an upward angle above the support handle.

3. At an upward angle, screw the remaining 2 screws into the marked outermost holes under the support handle.

4. Wrap power cord around Quick Release Cord Wrap.

5. Wrap flex hose around the hose wrap and secure with hose secure latch.

6. Align the product as image 4/5 shows and firmly push down the portable spot cleaner until it is secured on both sides.

To further check if the portable spot cleaner is secure, plug in and turn on to verify that the upright cleaning mode indicator light is illuminated. If it does not illuminate, release the pod and re-secure by pushing firmly until both sides snap into place.

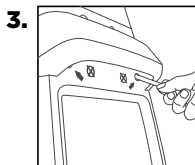
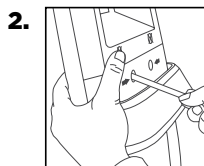
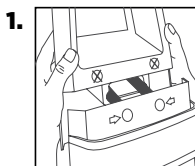
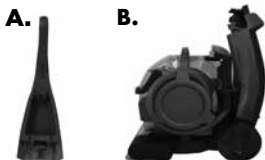
7. Check latches on both sides to confirm it is secured. Refer to image 6.

8. Snap attachment(s) into the back of unit.

**NOTE: Portable spot cleaner must be fully secure to operate in the upright cleaning mode.**

## ⚠️ WARNING

Do not plug in your cleaner until you have completely assembled it per the instructions and are familiar with all instructions and operating procedures.



Cord side

Hose side



## Cleaning fluid

Keep plenty of genuine BISSELL 2X\* formula on hand so you can clean whenever it fits your schedule. Always use genuine BISSELL deep cleaning formulas. Non-BISSELL cleaning solutions may harm the machine and may void the guarantee.

## ⚠️ WARNING

To reduce the risk of fire and electric shock due to internal component damage, use only BISSELL cleaning fluids intended for use with the deep cleaner.



2X\* Wash & Protect PRO Professional Stain & Odour Formula w/ Scotchgard™ Protector  
#78H6E



2X\* Wash & Protect PET Pet Stain & Odour Formula w/ Scotchgard™ Protector  
#99K5E



2X\* Wash & Protect Stain & Odour Formula w/ Scotchgard™ Protector  
#62E5E



2X\* Wash & Remove Allergen Removal Formula  
#89Q5E



2X\* Wash & Refresh Blossom & Breeze Fragrance Formula w/ Ambipur™ Freshness  
#1248E



2X\* Wash & Refresh Natural Orange Formula  
#83P3E



650 mL Stain Pretreat  
#1147E

\*2X concentrated formula, 60 mL is equivalent to 120 mL of non-concentrated formula.

# Operations

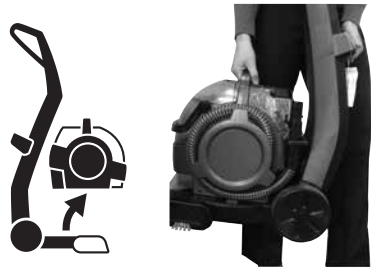
## Special features

### 2-in-1 cleaning technology

This innovative deep cleaner offers two machines in one. The upright deep cleaner uses brushes and cleaning formula to maximise cleaning. The portable spot cleaner detaches to clean tough spots and stains and hard to reach areas.

### Heatwave Technology™

This deep cleaner features Heatwave Technology to help maintain the temperature of the hand hot tap water you put in it to provide constant heat as you clean. The Heatwave Technology automatically turns on when you turn the machine on. Heatwave Technology operates in both upright and portable cleaning modes.



## Before you clean

1. Plan activities to give your carpet time to dry.
2. Move furniture to another area if cleaning an entire room (optional).
3. Vacuum area with a dry vacuum cleaner thoroughly before deep cleaning.
4. Plan your cleaning route to leave an exit path. It is best to begin cleaning in the corner farthest from your exit.
5. Pretreating (optional):

Pretreating is recommended to improve cleaning effectiveness for heavily soiled carpet in high traffic areas such as entryway and hallways.

### To pretreat:

- a. Using the BISSELL Stain Pretreat, generously spray evenly over soiled area. Do not overwet.
- b. Wait 3-5 minutes before deep cleaning.
- c. Clean as normal using your BISSELL deep cleaner, following the instructions below.

## ⚠ WARNING

To reduce the risk of fire, use only BISSELL deep cleaning formula for full size machines in your deep cleaner. Use of cleaning formulas that contain eucalyptus, lemon or pine oil may damage this appliance and void the guarantee. Chemical spot cleaners or solvent-based soil removers should not be used. These products may react with the plastic materials used in your deep cleaner causing cracking or pitting.

5a.



## UPRIGHT CLEANING MODE: Filling formula & water tank

1. Remove tank from the base of the machine by lifting up tank carry handle.

**NOTE: This tank was designed with a flat bottom so it can be easily filled.**

2. Unscrew the black cap and remove bottle insert.
3. Fill tank with hand hot (60°C/140°F MAX) tap water to the water fill line. Add 60 mL of BISSELL 2X formula to the tank. **Do not boil or microwave water as it can destroy the tank.**
4. Replace the bottle insert in the tank and tighten the black cap. Replace the tank on the deep cleaner.

# Operations

## Carpet cleaning

1. Plug into a proper outlet and press the power button.
2. With your foot, press the gray recline pedal, located on the back of the unit in between the wheels.
3. While pressing the spray trigger, make one slow forward wet pass and another one back. **Caution: Do not overwet.**
4. Release the spray trigger and make one slow forward and backward pass over the same area.
5. Repeat cleaning passes until solution being suctioned up appears clean. Continue passes without pressing the spray trigger until you can't see any more water being suctioned up. Repeated passes will help aid in dry time.

**NOTE: Your machine may be equipped with a circuit breaker that will automatically shut off the brush if a large or loose object is caught in the brush roll. If that happens, be sure to unplug your machine, remove the foreign object, and then plug the machine back in to reset the circuit breaker.**

## Empty dirty tank

1. When the dirty tank reaches the "FULL" line on the tank, it is time to empty.
2. Remove dirty tank and carry to a utility sink, toilet or outside (where you will dispose of the dirty water).
3. To unlock the dirty tank lid, rotate handle over the back of the tank. Remove lid and pour out dirty water. Rinse out dirty tank to remove any debris.
4. Replace top of tank, and rotate the handle forward to lock in place on front of tank.
5. Before replacing tank on machine, wipe debris from red filter.

## ATTENTION

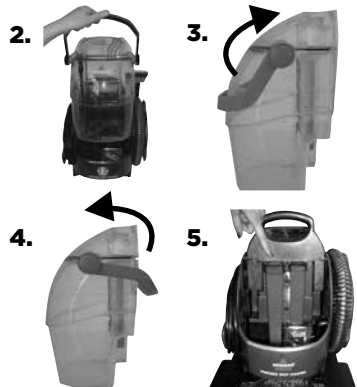
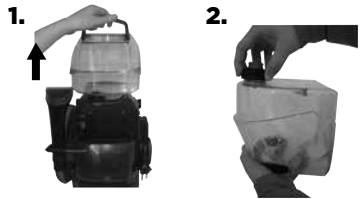
Some Berber carpets have a tendency to fuzz with wear. Repeated strokes in the same area with an ordinary vacuum or deep cleaner may aggravate this condition.

## CAUTION

Brush may unexpectedly restart. To reduce the risk of injury from moving parts, unplug before cleaning or servicing.

## CAUTION

Take care not to run over loose objects or edges of area rugs. Stalling the brush may result in premature belt failure.



# Operations

## Cleaning your machine

1. Flush out machine of any remaining residual solution.

- a. Fill the formula & water tank with hand hot (60°C/140°F MAX) tap water and turn on your machine.
- b. Recline handle and press the spray trigger for about 15 seconds while making forward and backward passes on carpet. Continue without pressing the spray trigger until there is no more water being suctioned up.
- c. Turn off the machine and wrap the power cord. Make sure the dirty tank and the formula & water tank are emptied, rinsed, and dried before the next use.
- d. Before you replace tank, clean all debris from red filter screen.

2. Rinse nozzle assembly of any dirt and debris.

- a. Remove portable spot cleaner from the base of the machine.
- b. Remove the nozzle assembly from the machine by unscrewing 3 screws and lifting away the upper and lower nozzle.
- c. Rinse upper and lower nozzles out at the faucet.
- d. Place lower nozzle back onto the machine by hooking the tabs into the holes on the bottom sides of the front of the machine.
- e. Place upper nozzle onto the lower nozzle by hooking the tabs into the holes on the front of the lower nozzle. Secure with 3 screws.

3. The inside of the end caps can be wiped out with a clean paper towel, or for a more thorough clean, the end caps can be taken off and rinsed clean.

4. Any loose hair or debris can be pulled from the brush rolls and thrown away. For a more thorough clean, follow directions on page 13 for removal of brush rolls. Your machine is now ready to be stored.

**NOTE: Store cleaner in a protected, dry area. Since this product uses water, it must not be stored where there is a danger of freezing. Freezing will damage internal components and void the guarantee.**

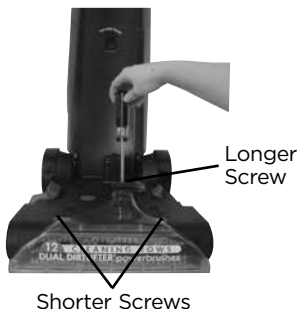
## WARNING

To reduce the risk of electric shock, turn power switch off and disconnect plug from electrical outlet before performing maintenance or troubleshooting checks.

Tip

» For best results empty, rinse and dry both tanks before storing.

2b.



2d.



2e.



Tip

» Let all parts dry completely before replacing back onto machine.



# Operations

## PORTABLE SPOT CLEANING MODE

### Preparing the machine

1. Step on the portable spot cleaning pedal to release the portable spot cleaner.
2. Release flex hose by twisting the hose secure latch clockwise. Unwrap flex hose completely.
3. Attach the desired cleaning tool to the hose grip until it snaps together. Make certain the tool is securely attached.
4. Twist the Quick Release cord wrap clockwise to unwrap the power cord completely and plug into grounded outlet.

### Filling tank

#### Cleaning with Tools

**Important! If using to clean upholstery, check upholstery tags. Check manufacturer's tag before cleaning. "W" or "WS" on the tag means you can use your deep cleaner. If the tag is coded with an "X" or an "S" (with a diagonal stripe through it), or says "Dry Clean Only", do not proceed with any deep cleaning machine. Do not use on velvet or silk. If manufacturer's tag is missing or not coded, check with your furniture dealer."**

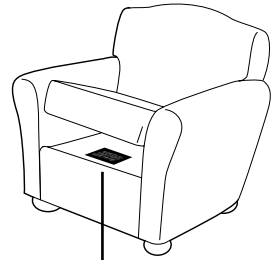
1. Follow the instructions for filling the tank in the upright cleaning mode section on page 8.
2. Attach cleaning tool of your choice to end of hose.
3. Hold the tool approximately 2.5 cm above the soiled surface. Press the spray trigger to apply the cleaning solution to the soiled area. **Caution: Do Not Overwet.**

**NOTE: Hold end of hose below the tank water level to help prime the portable spot cleaner.**

4. Using the brush on the tool, gently scrub the area to be cleaned.
5. Apply downward pressure on the tool and pull it toward you. The suction will remove the dirt and cleaning solution. Continue until no more dirt can be removed.

## IMPORTANT

Check for colourfastness in an inconspicuous place. If possible, check upholstery stuffing. Coloured stuffing may bleed through fabric when it becomes wet.



Manufacturer's tag

# Operations

## Empty dirty tank

---

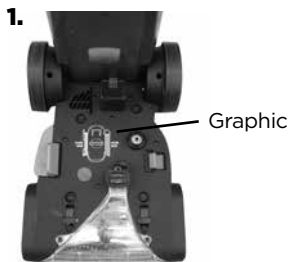
Follow the instructions under Empty dirty tank section on page 8 of the Upright cleaning mode section.

### Cleaning portable machine

1. Before turning off the machine, suction up clean water from a bowl to rinse out the interior of the hose. Then, lift the cleaning tool and point it upwards to drain any remaining water into the tank.
2. Remove and rinse the tools in clean, running water. Dry and replace in the tool storage provided.
3. Coil flex hose around the hose wrap and secure with latch.
4. Check suction gate and if it appears dirty, follow steps 1-4 under Cleaning Suction Gate on page 12.

### Replacing portable machine on base

1. Align the product as the graphic shows, with the cord side on the left and hose side on the right.
2. Push down the portable spot cleaner until you hear it click securely into place. Test the fit by pulling up on the carry handle to make sure it is secure.



# Maintenance & Care

## Machine care (check regularly)

### Cleaning suction gate

The suction gate automatically diverts air when the portable deep cleaner is detached. This should be checked and cleaned regularly for any dirt and debris.

1. Step on the pedal and remove the portable spot cleaner. Remove dirty tank.
2. Remove two screws and pull off suction gate door.
3. Wipe suction gate clean and rinse suction gate door.
4. Replace suction gate door and two screws.

### Cleaning spray tips

1. Step on the pedal and remove the portable spot cleaner.
2. To remove black spray tip, unlatch tab on front portion of spray tip from base of machine and pull up and out of red receiver.
3. Clean by rinsing under water.
4. Replace black spray tip by inserting back into red receiver and latching tab back down into base of machine.
5. Repeat steps on second spray tip.

## **WARNING**

To reduce the risk of electric shock, turn power switch off and disconnect plug from electrical outlet before performing maintenance or troubleshooting checks.

2.

Suction Gate



Spray Tips



# Maintenance & Care

## Small belt removal and replacement (as needed)

Occasional replacement of one or both belts may become necessary. If that is needed, please follow the instructions below.

**1.** Turn off the machine, and unplug it from the outlet. Remove portable spot cleaner.

**2.** Remove the nozzle assembly from the machine. Refer to step 2 on page 9.

**3.** Turn the machine on its side.

**IMPORTANT: with portable spot cleaning pedal facing down.**

**4.** Remove end cap by unscrewing the 3 screws. Take care not to drop the screws into the unit.

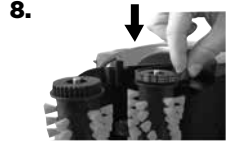
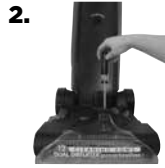
**5.** Remove 1 silver screw from the pivot arm.

**6.** Remove pivot arm by gently lifting up.

**7.** Remove small brush belt.

**8.** Replace small brush belt, and reverse steps above.

**9.** Manually rotate brushes by hand to make sure they move freely. You may notice a slight resistance from the motor.



# Maintenance & Care

## Brush removal and large belt replacement (as needed)

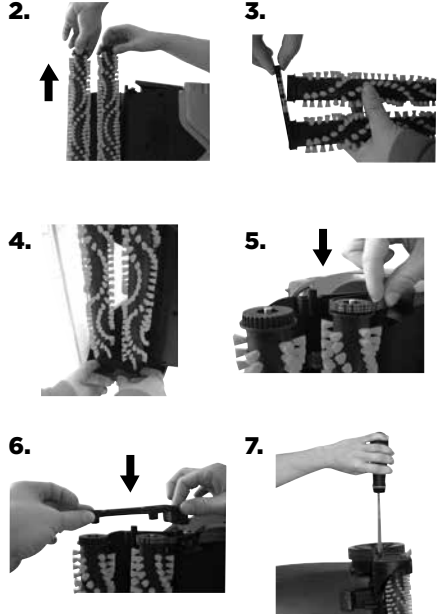
Brushes can be removed for cleaning or replacement as needed.

1. Follow small belt removal Instructions on page 12 steps 1-7.
2. Remove brush rolls by pulling them off of the metal rods. **Be careful not to lose the small washer at each end of the brush rolls.**
3. Re-attach the large belt to the grooves on the end of the new or cleaned brush rolls. If the belt is damaged, replace with a new belt.
4. Place cleaned or new brush rolls back onto the rods. Make sure one washer is on each end of the rollers prior to sliding onto the rod. Be sure the brush is seated completely on the rod.
5. Replace small belt over grooves in back roller and metal cog.
6. Replace pivot arm and secure with silver screw.
7. Re-attach end cap by tightening with the (3) black screws.
8. Replace the nozzle assembly back onto the machine. Refer to step 2 on page 9.

If you have any questions or are having trouble installing or replacing your belt(s) or brushes, please call **BISSELL Consumer Care**.

### **WARNING**

To reduce the risk of electric shock, turn power switch off and disconnect plug from electrical outlet before performing maintenance or troubleshooting checks.



# Troubleshooting

## **WARNING**

To reduce the risk of electric shock, turn power switch off and disconnect plug from electrical outlet before performing maintenance or troubleshooting checks.

<b>Problem</b>	<b>Possible causes</b>	<b>Remedies</b>
<b>Upright cleaning mode indicator light does not illuminate</b>	The power is not turned ON	The power must be ON to activate the indicator light
	The portable spot cleaner is not attached completely	Make sure the portable spot cleaner is attached. Push down firmly to check.
<b>Reduced Spray or No Spray</b>	Formula & water tank may be empty	Refill tank
	Formula & water tank may not be seated completely	Turn power OFF. Remove and reseal tank
	Pump may have lost prime in portable spot cleaning mode	Hold end of hose below water level in tank to prime
	The portable spot cleaner is not attached completely	Push down firmly to check connection
<b>DirtLifter™ PowerBrush does not turn</b>	The portable spot cleaner is not attached completely	Make sure the portable spot cleaner is attached. Push down firmly to check
	The unit is in the upright position	Brushes only rotate when unit is reclined using the recline pedal
	Circuit breaker on machine (if equipped) may have tripped	Turn the machine OFF and unplug from outlet. Check to see if foreign object is caught in brush roll. Remove object. Plug machine in to reset circuit breaker
	The belt is off or broken	Turn power OFF and unplug unit from outlet. Follow instructions on pages 12 and 13
<b>Loss of suction power</b>	Tanks may not be seated properly	Pick up both tanks and reseal them so they fit snugly on the unit
	Nozzles may not be assembled properly	Unplug the unit. Check to make sure the "lip" of the nozzle is securely hooked into the groove on bottom of the machine (see page 9)
	The portable spot cleaner is not attached completely	Make sure the portable spot cleaner is attached. Push down firmly to check
	Dirty tank has picked up maximum amount of dirty water and has reached full line	Empty dirty tank
	Formula & water tank is empty	Check fluid levels in formula & water tank
	Suction gate is open	Check to make sure the suction gate is closed. Follow "Cleaning suction gate" instructions on page 12

**Please do not return this product to the store.**

Other maintenance or service not included in the manual should be performed by an authorized service representative.

Thank you for selecting a BISSELL product.

# Notes

# Consumer Guarantee

This guarantee gives you specific legal rights, in addition to rights you may have under the Australian consumer law. If you need additional instruction regarding this guarantee or have questions regarding what it may cover, please contact your local BISSELL consumer services on the details set out below.

## Limited 2 Year Guarantee from the date of purchase by original purchaser

Subject to the \*conditions identified below, BISSELL will repair or replace (with new or remanufactured components or products), at BISSELL's option, free of charge, any defective or malfunctioning part due to manufacturer defect. This guarantee applies to product used for personal purposes, and not commercial or rental service. This guarantee does not apply to fans or routine maintenance or consumable components such as filters, belts, brush rolls, etc., damage or malfunction caused by negligence, abuse, neglect, unauthorized repair, or any other use not in accordance with the user's guide. BISSELL recommends that the original packaging be kept for the duration of the guarantee period in case such need arises within the guarantee period that the item needs re-packing and transportation.

### \*CONDITIONS OF GUARANTEE

Subject to whether such loss is reasonably foreseeable, BISSELL and its in-country distributors are not liable for incidental or consequential damages of any nature associated with the use of this product.

### FOR AUSTRALIAN CONSUMERS ONLY:

OUR GOODS COME WITH GUARANTEES THAT CANNOT BE EXCLUDED UNDER THE AUSTRALIAN CONSUMER LAW. YOU ARE ENTITLED TO A REPLACEMENT OR REFUND FOR A MAJOR FAILURE AND FOR COMPENSATION FOR ANY OTHER REASONABLY FORESEEABLE LOSS OR DAMAGE. YOU ARE ALSO ENTITLED TO HAVE THE GOODS REPAIRED OR REPLACED IF THE GOODS FAIL TO BE OF ACCEPTABLE QUALITY AND THE FAILURE DOES NOT AMOUNT TO A MAJOR FAILURE.

THIS GUARANTEE IS IN ADDITION TO OTHER RIGHTS OR REMEDIES UNDER LAW. NOTHING IN THIS GUARANTEE EXCLUDES, LIMITS OR MODIFIES ANY LIABILITY OF BISSELL WHICH IS IMPOSED BY LAW, OR LIMITS OR MODIFIES ANY REMEDY AVAILABLE TO THE CONSUMER WHICH IS GRANTED BY LAW. TO MAKE A CLAIM UNDER THIS GUARANTEE CONTACT BISSELL AUSTRALIA PTY LTD (DETAILS ABOVE). CONTACT BISSELL PRIOR TO RETURNING ANY GOODS. WHERE AGREED, BISSELL WILL REIMBURSE REASONABLE POSTAGE / HANDLING COSTS (IF ANY) FOR RETURNING GOODS TO BISSELL. TO CLAIM EXPENSES INCURRED IN MAKING A CLAIM UNDER THIS GUARANTEE PLEASE PROVIDE BISSELL WITH A COPY OF THE RECEIPT OF THE EXPENSES BY EMAIL OR POST.

## Consumer Care

**If your BISSELL product should require service or to claim under our limited guarantee, please contact us as follows:**

### Website:

[www.BISSELL.com](http://www.BISSELL.com)

### Email:

[consumercare@bissell.com](mailto:consumercare@bissell.com)

### Write:

BISSELL AUSTRALIA PTY LIMITED  
42 Rocco Dr.  
Scoresby 3179  
Victoria  
Australia

### Telephone:

Australia: 1300-247-735  
New Zealand: 0800-247-735

**Replacement parts and accessories are available for purchase. To purchase visit [www.BISSELL.com](http://www.BISSELL.com)**

## Visit the BISSELL website: [www.BISSELL.com](http://www.BISSELL.com)

When contacting BISSELL, have model number of cleaner available.

Please record your Model Number: \_\_\_\_\_ Please record your Purchase Date: \_\_\_\_\_

**NOTE: Please keep your original sales receipt. It provides proof of the date of purchase in the event of a Guarantee claim. See Guarantee for details.**



©2017 BISSELL Homecare, Inc  
Grand Rapids, Michigan  
All rights reserved. Printed in China  
Part Number 161-1455 01/17 RevA  
Visit our website at: [www.BISSELL.com](http://www.BISSELL.com)

Ambipur is a trademark of The Proctor & Gamble Company, Cincinnati, Ohio used under license by BISSELL Homecare, Inc.