

Experts In Home Cleaning™

HEALTHYhome PROHEAT 2X™

USER'S GUIDE

57G7 SERIES 220-240V

- 2 Thank You
- 3 Safety Instructions
- 4-5 Product View
- 6 Assembly
- 7-14 Operations
- 15 Maintenance and Care
- 16-17 Troubleshooting
- 18 Replacement Parts
- 18 Accessories and Formulas
- 19 Warranty
- 20 Consumer Services



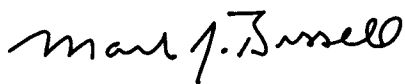
Thanks for buying a BISSELL Healthy Home ProHeat™

We're glad you purchased a BISSELL Healthy Home ProHeat deep cleaner. Everything we know about floor care went into the design and construction of this complete, high-tech home cleaning system.

Your BISSELL Healthy Home ProHeat deep cleaner is well made, and we back it with a limited two year warranty. We also stand behind it with a knowledgeable, dedicated Consumer Services department, so, should you ever have a problem, you'll receive fast, considerate assistance.

My great-grandfather invented the floor sweeper in 1876. Today, BISSELL is a global leader in the design, manufacture, and service of high quality homecare products like your BISSELL Healthy Home ProHeat deep cleaner.

Thanks again, from all of us at BISSELL.



Mark J. Bissell
Chairman, President & CEO

IMPORTANT SAFETY INSTRUCTIONS

When using an electrical appliance, basic precautions should be observed, including the following:

READ ALL INSTRUCTIONS BEFORE USING YOUR DEEP CLEANER.

Always connect to a properly Earthed outlet. Unplug from outlet when not in use and before conducting maintenance or troubleshooting.

WARNING: To reduce the risk of fire, electric shock, or injury:

- Use indoors only
- Do not immerse; use only on surfaces moistened by cleaning process
- Do not leave machine when it is plugged in
- Do not service machine when it is plugged in
- If the supply cord is damaged, it must be replaced by the manufacturer or its service agent in order to avoid a hazard
- Do not use machine if it has been dropped, damaged, left outdoors or dropped into water
- Do not pull or carry by cord, use cord as a handle, close door on cord, pull cord around sharp corners or edges, run appliance over cord, or expose cord to heated surfaces
- Do not carry the appliance while in use
- Do not unplug by pulling on cord; unplug by grasping plug not the cord
- Do not handle plug or appliance with wet hands
- Do not put any object into appliance openings, use with blocked opening or restrict air flow
- Do not expose hair, loose clothing, fingers or body parts to openings or moving parts
- Do not pick up hot or burning objects
- Do not pick up flammable or combustible materials (lighter fluid, petrol, kerosene, etc.) or use in the presence of explosive liquids or vapours
- Do not use appliance in an enclosed space filled with vapours given off by oil base paint, paint thinner, some moth proofing substances, flammable dust, or other explosive or toxic vapours
- Do not operate the appliance unless the belt door is securely assembled in the location provided

- Remove plug from electrical outlet before cleaning or maintaining the appliance
- Not intended for use by persons (including children) with reduced physical, sensory or mental capabilities, or lack of experience and knowledge, unless they have been given supervision or instruction concerning use of the appliance by a person responsible for their safety
- Young children should be supervised to ensure that they do not play with the appliance
- Do not pick up toxic material (chlorine bleach, ammonia, drain cleaner, petrol, etc.)
- Do not modify the Earthed plug
- Do not use for any purpose other than described in this User's Guide
- Use only manufacturer's recommended attachments
- Use only cleaning products formulated by BISSELL for use in this appliance to prevent internal component damage
- Keep openings free of dust, lint, hair, etc.
- Keep appliance on a level surface
- Turn off all controls before unplugging
- Be extra careful when cleaning stairs
- Pay close attention when working around children

SAVE THESE INSTRUCTIONS FOR FUTURE USE

This model is for household use only.

WARNING:

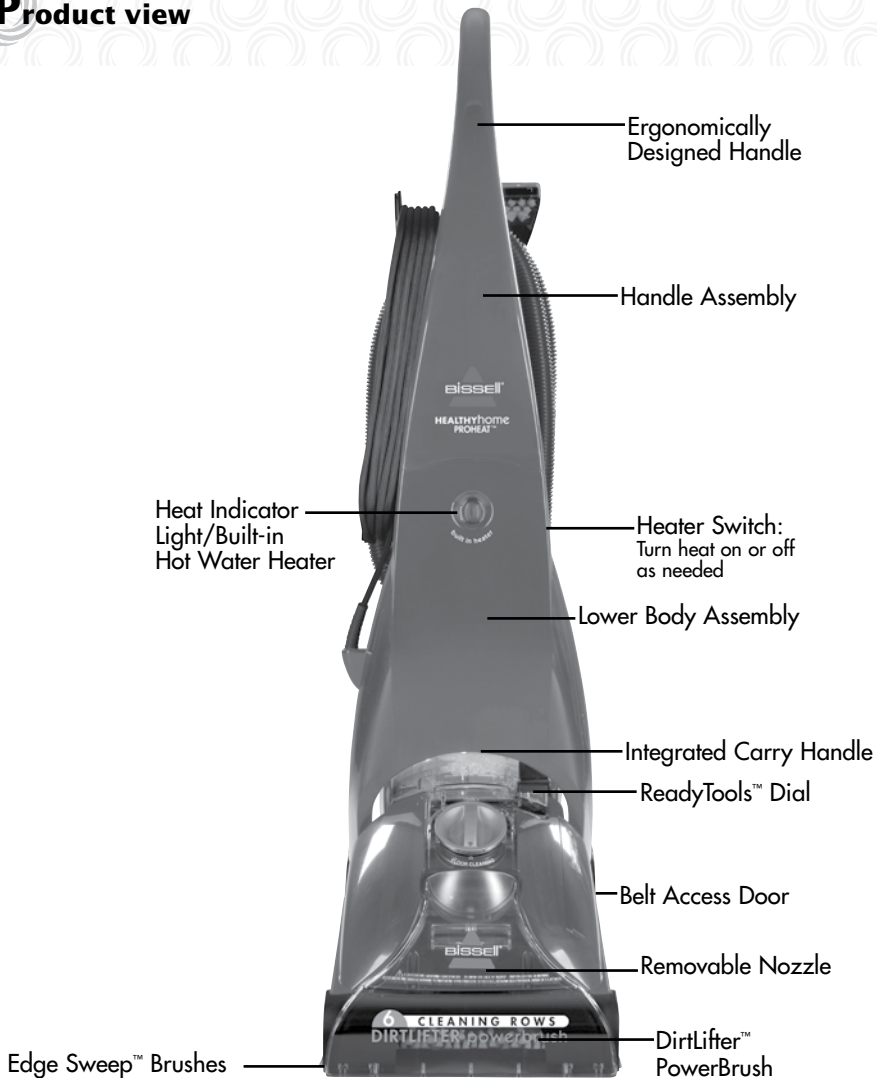
This appliance must be Earthed.

IMPORTANT

FOR OPERATION ON A 220-240 VOLT A.C. 50/60 Hz POWER SUPPLY ONLY.

If your appliance is fitted with a nonrewireable BS 1363 plug it must not be used unless a 13 amp (ASTA approved to BS 1362) fuse is fitted in the carrier contained in the plug. (Spares may be obtained from your BISSELL supplier). If for any reason the plug is cut off, it must be disposed of, as it is an electric shock hazard should it be inserted into a 13 amp socket.

Product view



Optional Accessories:

These items are available for purchase. To order replacement parts, additional tools or formulas, please refer to page 18-19.



3" Tough Stain Brush



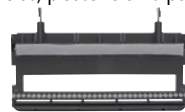
4" Upholstery Tool



6" Stair Tool



TurboBrush™



Hard Floor Attachment



Spraying Crevice Tool



Spraying 2 in 1 Crevice Tool



Mesh Tool Bag (bag only)

Product view



⚠ WARNING:
 To reduce the risk of fire and electric shock due to internal component damage, use only BISSELL cleaning formulas intended for use with the deep cleaner. Non-BISSELL cleaning formulas may harm the machine and void the warranty.

Cleaning formula:

Keep plenty of genuine BISSELL advanced cleaning formula on hand so you can clean and protect whenever it fits your schedule. Always use genuine BISSELL cleaning formulas. Non-BISSELL cleaning formulas may harm the machine and will void the warranty.



709 mL
 BISSELL
 2X Fibre
 Cleansing
 Advanced
 Formula with
 Scotchgard™
 protector
#62E5-E



709 mL
 BISSELL 2X
 Healthy Home
 Multi-Allergen
 Advanced
 Formula with
 Scotchgard™
 protector
#31W6-E



709 mL
 BISSELL 2X
 Pet Stain
 & Odor
 Advanced
 Formula with
 Scotchgard™
 protector
#99K5-E



709 mL
 BISSELL 2X
 Natural
 Orange
 Advanced
 Formula with
 Scotchgard™
 protector
#83P3-E



709 mL
 BISSELL
 2X Lavendar
 Essence
 Advanced
 Formula with
 Scotchgard™
 protector
#34B5-E



473 mL
 BISSELL 2X
 Hard Floor
 Solutions
#56L9-E




651 mL
 BISSELL
 Tough
 Stain
 Precleaner
#0400-E

Assembly

This user's guide has been designed to help you get the maximum satisfaction from your BISSELL deep cleaner. You'll find assembly and operating instructions, safety precautions, as well as maintenance and troubleshooting instructions. Please read this user's guide thoroughly before assembling your deep cleaner.

Your deep cleaner comes in four easy to assemble components:

- Handle assembly
- Upper hose rack
- Lower body assembly
- Lower hose rack

Four Phillips  head screws are included, 2 long and 2 short. They can be found taped to the handle assembly.

The only tool you will need to assemble your cleaner is a Phillips head screwdriver.

1. Slide handle assembly onto lower body and secure with two long screws.
2. Attach upper hose rack to back of handle assembly by pushing into open slots and sliding down until it snaps into place.
3. Attach lower hose rack by sliding in place on lower body assembly and securing with 2 short screws.
4. Attach Tough Stain tool to end of hose.
5. Wrap flex hose around hose rack and secure it into notched out holder as shown.
6. Keep flex hose locked in place with hose secure latch.

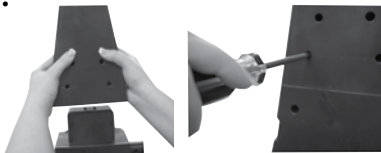


WARNING:

Do not plug in your cleaner until you have completely assembled it per the instructions and are familiar with all instructions and operating procedures.

Tip: Deep cleaning carpeting regularly can reduce dust and allergens in your home.

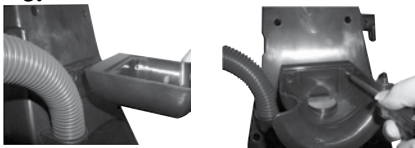
1.



2.



3.



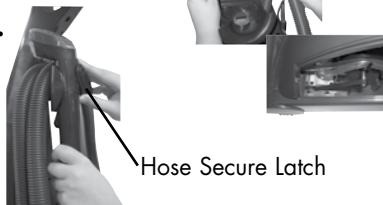
4.



5.



6.



Hose Secure Latch

Operations

Special features

Your **BISSELL** deep cleaner is a home cleaning system that uses a combination of heat, **BISSELL** advanced cleaning formula, brush agitation and suction to safely clean carpets.

Built-In-Heater

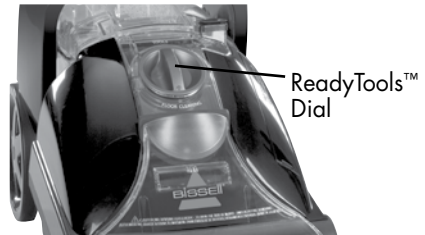
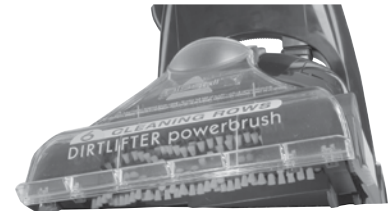
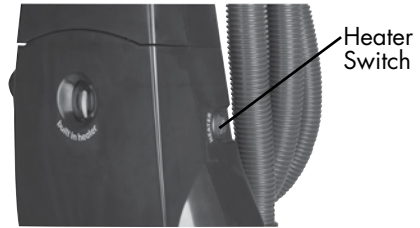
BISSELL ProHeat models all feature a patented built-in heater which will heat the hand hot tap water you put in it to safely optimize cleaning effectiveness. The heater will never allow the temperature to exceed 82°C degrees. The heater switch, which is located on the side of the machine, controls the heater so you have the option to turn off the heat if you are cleaning delicate wool or oriental rugs.

DirtLifter™ PowerBrush

The DirtLifter PowerBrush is designed to enhance cleaning performance. The bristle pattern safely lifts out the deep down dirt while gently grooming carpet fibers. The floating suspension self-adjusts to all carpet heights. When the power is ON and the machine is in the upright position, your carpet is protected because the brushes are lifted up off the carpet.

ReadyTools™ Dial

The ReadyTools feature allows you to choose between FLOOR CLEANING or cleaning with TOOLS simply by turning the dial. The TOOLS setting allows for above floor cleaning of upholstery, stairs, along baseboards, and other hard to reach areas. Simply choose the tool that is appropriate for the job, attach to flex hose and you are ready to go.



⚠️ WARNING:

To reduce the risk of fire, use only **BISSELL** advanced cleaning formula for full size machines in your deep cleaner. Use of cleaning formulas that contain lemon or pine oil may damage this appliance and void the warranty. Chemical spot cleaners or solvent-based soil removers should not be used. These products may react with the plastic materials used in your deep cleaner causing cracking or pitting.

Operations

Special features continued

Scotchgard™ Protector

Carpet protection applied at the mill typically wears down over time from heavy foot traffic and everyday cleaning, including deep cleaning. To help restore this important protection, only BISSELL offers cleaning formulas with Scotchgard protector. This offers extra protection against dirt and tough stains to keep your carpets looking good longer.

To maintain your Scotchgard 5-year limited stain warranty, you no longer are required to hire a professional. By using your BISSELL ProHeat machine with BISSELL formulas containing Scotchgard protector every 12 months, your carpet warranty from 3M remains in effect. No other home deep cleaning system can do this for you.

Measuring cup

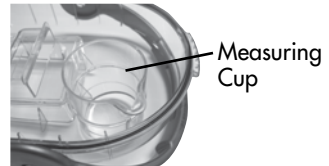
Your deep cleaner is equipped with a measuring cup for adding the proper amount of formula to the 2-in-1 water tank. For convenience the measuring cup is built into the lid of the 2-in-1 water tank.

2-in-1 water tank

Our 2-in-1 water tank system is designed with a heavy duty bladder inside for clean water. As you clean, the clean water and formula in the bladder will empty. Dirty water pulled out of your carpet will collect around the outside of the bladder so clean and dirty water are always kept separate. This allows the user to maximize tank space, yet only carry one tank to and from the sink for emptying and filling.

Removable Nozzle

Cleaning up your machine after you're done has never been easier! Nozzle pops off for rinsing in the sink.



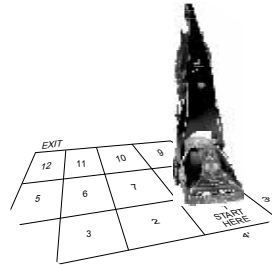
Operations

Before you clean

1. Plan activities to give your carpet time to dry.
2. **Move furniture** to another area if cleaning an entire room (optional).
3. **Vacuum area** with a dry vacuum cleaner before deep cleaning.
4. Plan your cleaning route to leave an exit path. It is best to begin cleaning in the corner farthest from your exit.
5. **Pretreating (optional)**
Pretreating is recommended to improve cleaning effectiveness for heavily soiled carpet in high traffic areas such as entry ways and hallways.

To pretreat:

- A. Using the BISSELL Tough Stain Precleaner, generously spray evenly over soiled area, do not overwet.
- B. Wait 3-5 minutes before deep cleaning.
- C. Clean as normal using your BISSELL deep cleaner.



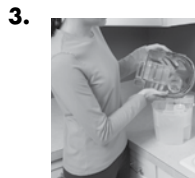
ATTENTION:

Some Berber carpets have a tendency to fuzz with wear. Repeated strokes in the same area with an ordinary vacuum or deep cleaner may aggravate this condition.

Operations

Fill the 2-in-1 water tank

1. Remove the tank from the base of the machine by lifting the tank carry handle.
2. Carry like a bucket to the sink. Rotate the handle forward to unlatch the lid. Remove lid, turn over and locate built in measuring cup.
3. Fill formula to the indicated fill line on the built in measuring cup and pour into mouth of the bladder.
4. Fill the bladder with clean hand hot tap water.
***Do not boil or microwave water as it can destroy the bladder.**
5. Replace the top of the tank by matching the lid and tank edges. Handle must be in the forward position in order to replace lid. Rotate the handle to the carrying position to latch the lid.
Note: Remember to secure the lid and test to make sure it is secure before picking up the tank.
6. Place tank into machine base, seating firmly in place. Rotate tank handle back into latched position.



Operations

Carpet cleaning

1. Plug the deep cleaner into a proper outlet. Set ReadyTools dial to the FLOOR CLEANING setting. Turn the power on by pressing the red power switch on the back of the unit with your foot. Turn heater switch (located on side of unit) to the on position. Allow one minute for the built-in heater to warm up before cleaning.

NOTE: The Heathly Home ProHeat will be fully warmed and will provide optimal performance after one minute of continuous heated cleaning.

2. With your foot, press the gray handle release lever located on the back of unit below water tank to detent handle.
3. While pressing the spray trigger, make one slow forward wet pass and another back. Let the built-in heater, BISSELL advanced deep cleaning formula and DirtLifter PowerBrush do the work for you. **Caution: Do not overwet.**
4. Release the spray trigger and make one slow forward and backward pass over the same area to remove any residual dirty water and aid in drying.
5. Repeat cleaning passes until solution being suctioned up appears clean. Continue passes without pressing the spray trigger until you can't see any more water being suctioned up.

Tip:

Thorough vacuuming before deep cleaning will prevent early clogging of the lint trap.



Handle Release Power Switch



Heater Switch



WARNING:

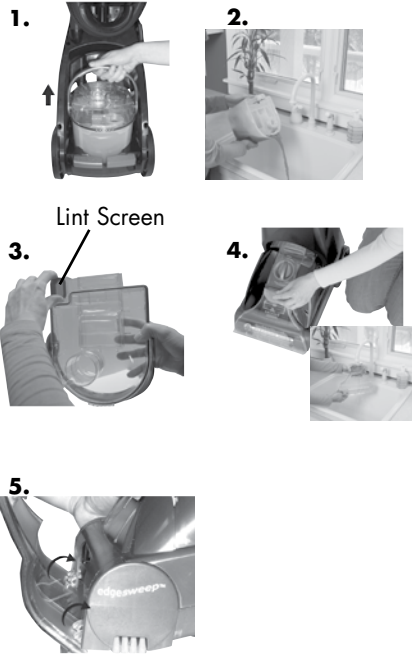
To reduce the risk of fire and electric shock due to internal component damage, use only BISSELL cleaning formulas intended for use with the deep cleaner. Non-BISSELL cleaning formulas may harm the machine and void the warranty.

Operations

Empty the 2-in-1 water tank/clean removable nozzle

1. Turn power switch off. Remove the 2-in-1 water tank from the base using the tank carry handle. Carry the tank like a bucket to a utility sink or outside where you will dispose of the collection water. Remove the top of the tank by rotating the handle forward to unlatch lid and lifting lid off tank.
2. Empty collection water from bottom of tank.
3. After each use, remove and rinse the lint screen located on the tank lid.
4. If nozzle needs to be cleaned, remove by grasping handle at the top and pulling forward. Clean removable nozzle by rinsing under running water.
5. When finished, replace nozzle by slightly raising front of machine to line up slots on the base with the hooks on nozzle. Attach at base first and then click nozzle into place.
6. To continue carpet cleaning, refer back to pages 10 through 11, beginning with "Fill the 2-in-1 water tank" on page 10.

NOTE: If nozzle is not attached properly loss of suction will occur.



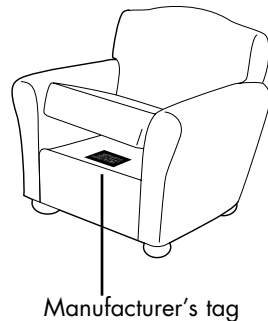
If cleaning is complete, refer to the "Maintenance and care" section on page 15.

ReadyTools™

Your Healthy Home ProHeat deep cleaner comes equipped with a hose and at least one attachment for cleaning stairs, upholstery, and more.

Important! If using the machine to clean upholstery, check upholstery tags.

1. Check manufacturer's tag before cleaning. "W" or "WS" on the tag means you can use your PROHeat. If the tag is coded with "X" or "S" (with a diagonal strike through), or says "Dry Clean Only," do not proceed. Do not use on velvet or silk. If manufacturer's tag is missing or not coded, check with your furniture dealer.
2. Check for colorfastness in an inconspicuous place.
3. If possible, check upholstery stuffing. Colored stuffing may bleed through fabric when wet.
4. Plan activities to give upholstery time to dry.



Operations

ReadyTools™ continued

5. Vacuum thoroughly to pick up loose debris and pet hair. Use a vacuum with a brush attachment and a crevice tool to clean in fabric folds and tufts.
6. To begin cleaning with attachments, follow the instructions on page 10 for filling the 2-in-1 water tank.
7. Set the ReadyTools dial to the TOOLS setting. This will allow spray and suction from the hose.
8. Attach the cleaning tool of your choice to the end of the hose.
9. Clean by pressing the spray trigger to spray solution onto the area to be cleaned. Slowly move the tool back and forth over the soiled surface. Release the spray trigger to suction dirty water. Continue to clean in the area, working in small sections, until dirt is removed.

Caution: Do Not Overwet.

10. When finished cleaning, remove and rinse tool(s) in clean, running water.
11. It is recommended that you suction clean water from the tap to rinse out the hose.
12. Before wrapping hose onto tool rack, lift end of hose and stretch out to ensure all water is cleared from hose.
13. Wrap flex hose around tool rack.

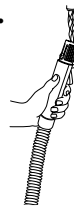
14. Empty 2-in-1 water tank and rinse out, following instructions on page 12.
15. If the ReadyTools dial becomes difficult to turn, the diverter assembly that holds the dial may need to be cleaned. To clean, first remove nozzle and locate screw that holds the diverter assembly in place. With a Phillips screwdriver, remove the screw and set aside.
16. Remove diverter assembly; hold under running water making sure water flows through and around the dial. Turn the dial about 10 times clockwise and 10 more times counter clockwise. This should free up any debris.

17. Wipe diverter assembly with a soft cloth and replace back on machine. Replace nozzle.
18. Return ReadyTools dial to FLOOR CLEANING setting.

7.



11.

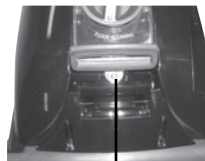


12.



Run water through here

15.



Screw

16.



Operations

Hard Floor Cleaning

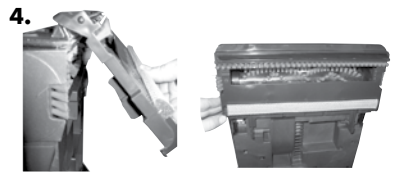
Your deep cleaner may have included a hard floor tool and Hard Floor Solutions. The hard floor tool provides effective cleaning for linoleum, vinyl, and tile floors.

Caution: Do not use on unsealed hardwood floors.

1. Thoroughly vacuum or sweep floor to pick up any debris.

NOTE: Prior to filling with formula and water be sure all carpet cleaning formula is thoroughly rinsed from the 2-in-1 water tank.

2. Fill BISSELL Hard Floor Solutions to the indicated fill line in the built in measuring cup and pour into mouth of bladder.
3. Fill the bladder with clean hand hot tap water and set aside.
4. Attach the hard floor tool to the bottom of the machine by hooking it into the nozzle and swinging it down until it clicks into place.
5. Be sure the ReadyTools dial is set to FLOOR CLEANING.
6. Plug into an outlet and turn the power on.
7. Plan your cleaning route to leave an exit path. Be sure to allow adequate time for floors to dry.
8. While pressing the spray trigger, make one slow forward wet pass and another back. **Caution: Do Not Overwet.**
9. Repeat the motion without pressing the spray trigger using the hard floor tool to squeegee and suction up the dirty water.
10. When finished, remove hard floor tool, rinse and let dry before storing. Refer to the Maintenance and care section on page 15 for machine clean up and storage instructions.



Maintenance and care

Machine care

For best results, a few simple steps can assure your machine is well maintained after cleaning is complete.

1. Turn power switch off. Unplug the machine and wrap the power cord.
2. After emptying the 2-in-1 water tank, rinse it with running hand hot tap water, taking care to clean underneath and around the heavy duty bladder. Clean out red lint screen. Removable nozzle may be rinsed if necessary.
3. Replace the 2-in-1 water tank on the machine.
4. Any loose hair or debris can be pulled from the brush roll and thrown away.
5. To clean attachments, remove from hose and rinse in clean, running water. Dry before storing. Clean the hose by suctioning clean water from the tap. Before wrapping back on machine, lift end of hose and stretch out to ensure all water is cleared from hose. Refer to page 13, illustrations 11 and 12.
6. Wipe the machine's exterior with a soft cloth.
7. After carpet is dry, vacuum again to remove hair and fuzz.

Machine storage

Put the unit away in a closet or basement for the next use. Store cleaner in a protected, dry area. Since this product uses water, it must not be stored where there is a danger of freezing. Freezing will damage internal components and void the warranty.

Troubleshooting



WARNING:

To reduce the risk of electric shock, or injury, unplug from the outlet before servicing

Heat indicator light does not illuminate

Possible Causes

1. The heater switch is not turned on.
2. The machine power switch is not turned on.

Remedies

1. Turn on the heater switch located on side of unit.
2. Both switches must be on to activate the heat indicator light.

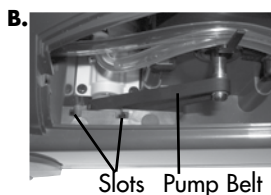
Reduced spray OR no spray

Possible cause

1. Bladder may be empty.
2. 2-in-1 water tank may not be seated properly.
3. Pump may have lost prime.
4. The pump belt may be broken.

Remedies

1. Turn power switch off; refill bladder with clean hand hot tap water and formula.
2. Turn power switch off; remove tank and reseal.
3. Turn power switch off; after 1 minute turn on and depress spray trigger.
4. Turn power switch off and unplug from the outlet. To check if a pump belt has broken, you will need a flat head screwdriver. **A.** Insert the blade end into the slot of the belt access door to release. Examine the belt for breakage. You should be able to see the pump belt looped around the motor shaft. If it is broken or missing, please refer to Replacement Parts on page 18. A replacement belt may be ordered by calling BISSELL Consumer Services Complete installation instructions will accompany the replacement belt. **B.** When replacing belt access door be sure to line up slots of belt access door with slots in machine, slide door into place and snap shut.



Troubleshooting

DirtLifter PowerBrush does not turn

Possible cause

1. The brush belt or pump belt is off or broken.

Remedies

1. Refer to Remedy 4 on page 16 to check if brush belt or pump belt is broken.

Cleaner not picking up solution

Possible cause

1. ReadyTools dial may be on the wrong setting for the cleaning job.
2. Poor tool position. (Hand held attachments only).
3. Removable nozzle may not be properly attached.

4. 2-in-1 water tank lid is not properly installed.
5. 2-in-1 water tank is not properly seated.

6. 2-in-1 water tank has picked up maximum dirty water.

7. The lint screen may be clogged.

Remedies

1. Set ReadyTools dial to either FLOOR CLEANING or TOOLS.

2. Adjust angle; apply more downward pressure.
3. Make sure nozzle is on correctly by slightly raising front of machine to line up slots on the base of the machine with the hooks on nozzle. Attach at base first and then click nozzle into place. Refer to image 5 on page 12.
4. Re-install lid; refer to the images on page 10.
5. 2-in-1 water tank must be firmly seated to function; remove and reset 2-in-1 water tank.
6. Empty 2-in-1 water tank and refill, refer to the Operation section.
7. Clean out lint screen. Refer to page 12.

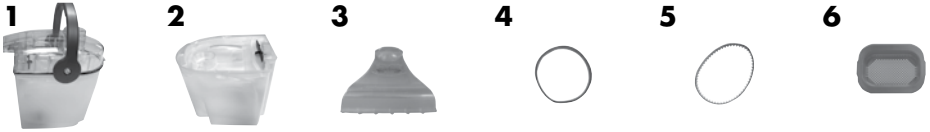
Other maintenance or service not included in the manual should be performed by an authorized service representative.

Thank you for selecting a BISSELL product.

Please do not return this product to the store.

Replacement parts

| Item | Part No. | Part Name |
|------|----------|--|
| 1 | 203-0104 | Tank Assembly Complete |
| 2 | 203-0102 | Tank Base |
| 3 | 203-0124 | Removable Nozzle |
| 4 | 215-0628 | Replacement Pump Belt (with instructions) |
| 5 | 015-0621 | Replacement Brush Belt (with instructions) |
| 6 | 203-0105 | Lint Screen |



Accessories and formulas

| Item | Part No. | Part Name |
|------|----------|--|
| 1 | 203-0149 | Hard Floor Tool |
| 2 | 203-6651 | 3" Tough Stain Tool |
| 3 | 203-6653 | 4" Upholstery Tool |
| 4 | 203-6654 | 6" Stair Tool |
| 5 | 203-6652 | Powered TurboBrush™ Hand Tool |
| 6 | 203-0116 | Spraying 2-in-1 Crevice Tool w/Brush |
| 7 | 203-6655 | Spraying Crevice Tool |
| 8 | 210-3040 | Mesh Tool Storage Bag |
| 9 | 62E5-E | 709 mL BISSELL 2X Fibre Cleansing Advanced Formula |
| 10 | 31W6-E | 709 mL BISSELL 2X Healthy Home Multi-Allergen Advanced Formula |
| 11 | 99K5-E | 709 mL BISSELL 2X Pet Stain & Odor Advanced Formula |
| 12 | 83P3-E | 709 mL BISSELL 2X Natural Orange Advanced Formula |
| 13 | 34B5-E | 709 mL BISSELL 2X Lavender Essence Advanced Formula |
| 14 | 56L9-E | 473 mL BISSELL 2X Hard Floor Solutions |
| 15 | 0400-E | 651 mL Tough Stain Precleaner |



Warranty - BISSELL Healthy Home ProHeat

This warranty gives you specific legal rights, and you may also have other rights which may vary from country to country. If you need additional instruction regarding this warranty or have questions regarding what it may cover, please contact BISSELL Consumer Services by telephone, or regular post as described below, or contact your local in country distributor.

Limited Two Year Warranty

Subject to the *EXCEPTIONS AND EXCLUSIONS identified below, BISSELL Homecare, Inc., will replace (with new or remanufactured components), at BISSELL's option, free of charge from the date of purchase by the original purchaser, for two years any defective or malfunctioning part do to manufacturers defect.

This warranty applies to product used for personal, and not commercial or rental service. This warranty does not apply to fans or routine maintenance components such as filters, belts, or brushes. Damage or malfunction caused by negligence, abuse, or use not in accordance with the User's Guide is not covered.

For Australian inquiries:

Monday - Friday 9 am — 5 pm

BISSELL AUSTRALIA PTY LIMITED

42 Rocco Drive

Scoresby 3179

Victoria

Australia

Telephone: 1-800-811-183

For New Zealand inquiries:

Monday - Friday 9 am — 5 pm

Parex Industries Ltd.

5 Tolich Place

Henderson 0610

Auckland

New Zealand

Telephone: 0800-247-735

For all other inquiries:

Monday - Friday 8 am — 4 pm

BISSELL Homecare, Inc.

PO Box 1888

Grand Rapids, Michigan 49501 USA

Telephone: 01-616-453-4451

Fax: 01-616-453-1383

BISSELL HOMECARE INC. IS NOT LIABLE FOR INCIDENTAL OR CONSEQUENTIAL DAMAGES OF ANY NATURE ASSOCIATED WITH THE USE OF THIS PRODUCT. BISSELL'S LIABILITY WILL NOT EXCEED THE PURCHASE PRICE OF THE PRODUCT.

*EXCEPTIONS AND EXCLUSIONS FROM THE TERMS OF THE LIMITED WARRANTY

THIS WARRANTY IS EXCLUSIVE AND IN LIEU OF ANY OTHER WARRANTIES EITHER ORAL OR WRITTEN. ANY IMPLIED WARRANTIES WHICH MAY ARISE BY OPERATION OF LAW, INCLUDING THE IMPLIED WARRANTIES OF MERCHANTABILITY AND FITNESS FOR A PARTICULAR PURPOSE, ARE LIMITED TO THE TWO YEAR DURATION FROM THE DATE OF PURCHASE AS DESCRIBED ABOVE.

If your BISSELL product should require service:

Call BISSELL Consumer Services at the numbers below and we will give you the location of a BISSELL Authorized Service Center in your area. If you have questions about your warranty or need replacement parts please contact the numbers below.

For Australian inquiries:

Monday - Friday 9 am — 5 pm
BISSELL AUSTRALIA PTY LIMITED
42 Rocco Drive
Scoresby 3179
Victoria
Australia
Telephone: 1-800-811-183

For New Zealand inquiries:

Monday - Friday 9 am — 5 pm
Parex Industries Ltd.
5 Tolich Place
Henderson 0610
Auckland
New Zealand
Telephone: 0800-247-735

For all other inquiries:

Monday - Friday 8 am — 4 pm
BISSELL Homecare, Inc.
PO Box 1888
Grand Rapids, Michigan 49501 USA
Telephone: 01-616-453-4451
Fax: 01-616-453-1383

Or visit the BISSELL website - **www.bissell.com**

When contacting BISSELL, have model number of cleaner available.

Please record your Model Number: _____

Please record your Purchase Date: _____

NOTE: Please keep your original sales receipt. It provides proof of purchase date in the event of a warranty claim. See Warranty on page 15 for details.



©2010 BISSELL Homecare, Inc
Grand Rapids, Michigan
All rights reserved. Printed in China
Part Number 120-4245
Rev 8/10
Visit our website at:
www.bissell.com