

POWERBRUSH PLUS™
USER GUIDE

MODEL 53W1F

IMPORTANT SAFETY INSTRUCTIONS

READ ALL INSTRUCTIONS BEFORE USING YOUR DEEP CLEANER.

When using an electrical appliance, basic precautions should be observed, including the following.

WARNING

ALWAYS CONNECT TO A PROPERLY EARTHED ELECTRICAL SOCKET.

WARNING

TO REDUCE THE RISK OF FIRE, ELECTRIC SHOCK, OR INJURY:

- » Unplug from electrical socket when not in use and before servicing.
- » This appliance can be used by children aged from 8 years and above and persons with reduced physical, sensory and mental capabilities or lack of experience and knowledge if they have been given supervision or instruction concerning use of the appliance in a safe way and understand the hazards involved. Cleaning and user maintenance shall not be made by children without supervision.
- » Children should be supervised to ensure that they do not play with the appliance.
- » If the supply cable is damaged, it must be replaced by the manufacturer, its service agent or similarly qualified persons in order to avoid a hazard.
- » Do not leave appliance when plugged in.
- » Do not modify earthed plug.

WARNING

TO REDUCE THE RISK OF FIRE AND ELECTRIC SHOCK - USE INDOORS ONLY. DO NOT IMMERSE. USE ONLY ON SURFACES MOISTENED BY THE CLEANING PROCESS. USE ONLY BISSELL CLEANING PRODUCTS INTENDED FOR USE WITH THIS MACHINE.

- » Use indoors only.
- » Do not allow to be used as a toy.
- » Use only as described in the user guide.
- » Use only manufacturer's recommended attachments.
- » Do not use with damaged cable or plug.
- » Do not immerse in water or liquid.
- » If appliance is not working as it should, has been dropped, damaged, left outdoors, or dropped into water; do not attempt to operate it and have it repaired at an authorized service center.
- » Liquid must not be directed towards equipment containing electrical components.
- » Do not pull or carry by cable, use cable as a handle, close door on cable, or pull cable around sharp edges or corners.
- » Do not run appliance over cable.
- » Keep cable away from heated surfaces.
- » Do not unplug by pulling on cable.
- » To unplug, grasp the plug, not the cable.
- » Do not handle plug or appliance with wet hands.
- » Do not put any object into openings.
- » Do not use with any opening blocked; keep free of dust, lint, hair, and anything that may reduce air flow.
- » Keep hair, loose clothing, fingers, and all parts of body away from openings and moving parts.
- » Turn off all controls before unplugging.
- » Use extra care when cleaning on stairs.
- » Do not use to pick up flammable or combustible liquids, such as petrol, or use in areas where they may be present.
- » Do not pick up toxic material (chlorine bleach, ammonia, drain cleaner, etc.)
- » Do not use appliance in an enclosed space filled with vapors given off by oil base paint, some mothproofing substances, flammable dust, or other explosive or toxic vapors.
- » Do not pick up hard or sharp objects such as glass, nails, screws, coins, etc.
- » Keep appliance on a level surface.
- » Do not carry appliance while in use.
- » Unplug before attaching the TurboBrush™ tool.

WARNING

TO REDUCE THE RISK OF ELECTRIC SHOCK, ALWAYS INSTALL FLOAT BEFORE ANY WET PICK-UP OPERATION.

FOR OPERATION ON A 220-240 VOLT A.C. 50/60 HZ POWER SUPPLY ONLY.

This model is for household use only.

SAVE THESE INSTRUCTIONS FOR FUTURE USE

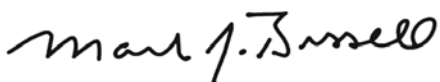
Thanks for buying a BISSELL deep cleaner

We're glad you purchased a BISSELL deep cleaner. Everything we know about floor care went into the design and construction of this complete, high-tech home cleaning system.

Your BISSELL deep cleaner is well made, and we back it with a limited two-year guarantee. We also stand behind it with a knowledgeable, dedicated Consumer Care department, so, should you ever have a problem, you'll receive fast, considerate assistance.

My great-grandfather invented the floor sweeper in 1876. Today, BISSELL is a global leader in the design, manufacture, and service of high quality homecare products like your BISSELL deep cleaner.

Thanks again, from all of us at BISSELL.






Mark J. Bissell
Chairman & CEO

| | |
|-------------------------------|-------|
| Safety Instructions | 2 |
| Product View | 4 |
| Assembly | 5 |
| Operations | 6-9 |
| Maintenance & Care | 10-12 |
| Troubleshooting | 13 |
| Replacement Parts | 14 |
| Accessories | 15 |
| Guarantee | 16 |
| Consumer Care | 16 |

TIPS

- » Deep cleaning stairs and high-traffic areas on a regular basis helps prolong carpet life.
- » Deep cleaning carpeting regularly can reduce dust and allergens in your home.

| | | |
|--|----------------|--|
|  | WARNING | AN ACTION OR ATTENTION IS NEEDED TO THIS AREA IN ORDER TO REDUCE THE RISK OF ELECTRIC SHOCK, FIRE, OR INJURY |
|  | GUIDE | READ USER GUIDE FOR COMPLETE SAFETY AND USER INSTRUCTIONS |
|  | WEEE | DO NOT THROW THE APPLIANCE AWAY WITH THE NORMAL HOUSHOLD WASTE AT THE END OF ITS LIFE, BUT HAND IT IN AT AN OFFICIAL COLLECTION POINT FOR RECYCLING. BY DOING THIS YOU WILL HELP TO PRESERVE THE ENVIRONMENT. |



Product View

- 1 Quick Release Cord Wrap
- 2 Spray Trigger
- 3 Tough Stain Tool
- 4 Hose Wrap
- 5 Handle Assembly
- 6 Power Cord
- 7 Upper Body
- 8 Hose
- 9 Vent Cover (Foam Filter)
- 10 Collection Tank
- 11 Removable Nozzle
- 12 Collection Tank Latch



Cleaning fluid

Keep plenty of genuine BISSELL 2X formula on hand so you can clean and protect whenever it fits your schedule. Always use genuine BISSELL deep cleaning formulas. Non-BISSELL cleaning solutions may harm the machine and will void the guarantee.

⚠️ WARNING

To reduce the risk of fire and electric shock due to internal component damage, use only BISSELL cleaning fluids intended for use with the deep cleaner.



24oz. 2X Wash & Protect PRO Professional Stain & Odour Formula w/ Scotchgard[®] Protector
#78H6E



24oz. 2X Wash & Protect PET Pet Stain & Odour Formula w/ Scotchgard[®] Protector
#99K5E



24oz. 2X Wash & Protect Stain & Odour Formula w/ Scotchgard[®] Protector
#62E5E



24oz. 2X Wash & Refresh Blossom & Breeze Fragrance Formula w/ Febreze[®] Freshness
#1248E



24oz. 2X Wash & Refresh Cotton Fresh Formula w/ Febreze[®] Freshness
#1249E



24oz. 2X Wash & Refresh Natural Orange Formula
#83P3E



16 oz. 2X Wash & Shine Hard Floor Solutions
#56L9E



22oz. Stain Pretreat
#1147E

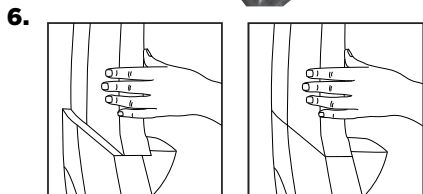
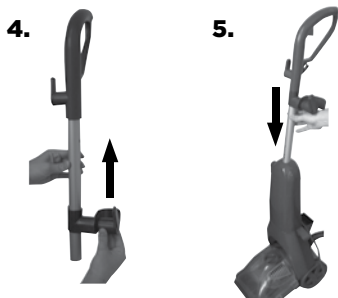
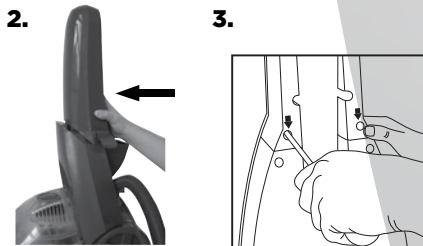
Assembly

Your deep cleaner assembles quickly and easily. The only tool you will need for assembly is a Phillips head screwdriver.

1. Locate the screw pack, which is taped to the upper handle.
 2. Slide the upper body onto the lower body, taking care not to leave a gap between the upper and lower body.
 3. Firmly holding the upper body, screw the 2 screws into the holes marked with arrows.
 4. Slide the hose wrap onto the upper handle as pictured and push up until it snaps into place.
 5. Slide the upper handle into the upper body until it will not go any farther and secure it with a screw at the marked screw hole above the water tank.
 6. After tightening the screws, ensure proper fit between the upper and lower body by trying to separate the two. If assembled properly, there should be no gap. If a gap appears between the two (see picture at right), continue to tighten the screws until no gap is present.
 7. Place solution tank on back of unit.
 8. Wrap power cord and flex hose.
 9. Keep flex hose snugly in place by using the hose secure latch.
 10. Attach tool to end of hose.
- Assembly is now complete.

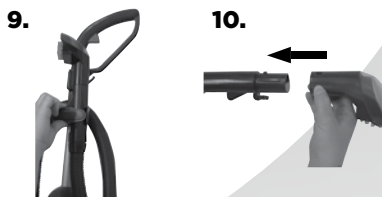
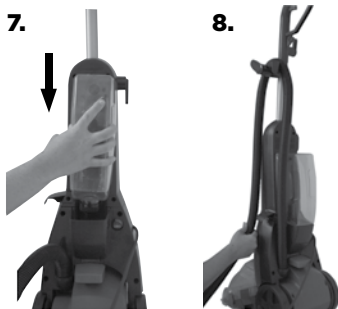
WARNING

Do not plug in your deep cleaner until you have completely assembled it per the instructions and are familiar with all instructions and operating procedures.



INCORRECT

CORRECT



Tip

» If you are having difficulty tightening the screws, remove, re-insert, and tighten again.

Operations

Special features

DirtLifter™ Powerbrush

The DirtLifter PowerBrush is designed to enhance cleaning performance. The bristle pattern safely lifts out the deep down dirt while gently grooming carpet fibers. The floating suspension self-adjusts to all carpet heights. When the power is ON and the machine is in the upright position, your carpet is protected because the brush is lifted up off the carpet.

ReadyTools™ Dial

The Ready Tools feature allows you to choose between FLOOR CLEANING or cleaning with TOOLS simply by turning the dial. The TOOLS setting allows for above floor cleaning of upholstery, stairs, creases along baseboards, and other hard to reach areas. Simply choose the tool that is appropriate for the job, attach to flex hose and you are ready to go.

Scotchgard™ Protector

Carpet protection applied at the mill typically wears down over time from heavy foot traffic and everyday cleaning, including deep cleaning. To help restore this important protection, only BISSELL offers deep cleaning formulas with Scotchgard protector. This offers extra protection against dirt and tough stains to keep your carpets looking good longer.



Microban® antibacterial product protection

Microban antibacterial product protection is built into key components to help prevent the growth of harmful common household bacteria. It helps to keep the unit fresher and cleaner between uses.



More than 7 million Australians suffer from asthma and allergies. The Sensitive Choice program has been developed by the National Asthma Council Australia to help Australians and New Zealanders make better lifestyle choices that may help manage asthma and allergies more effectively.

The BISSELL range of deep carpet cleaners and deep carpet cleaning formulas has been approved by the National Asthma Council Australia's Sensitive Choice program, and carries the Sensitive Choice butterfly logo. The Sensitive Choice blue butterfly symbol is a way of recognising products and services that support asthma and allergy care. Products that carry the blue butterfly may be better choices for people with asthma and allergies.

To learn more about managing asthma and allergies, visit the Sensitive Choice website at: www.sensitivechoice.com.au

Operations

Before you clean

1. Move furniture to another area if cleaning an entire room. (Optional)
2. Vacuum carpet thoroughly.
3. Plan your cleaning route to leave an exit path. It is best to begin cleaning in the corner farthest from your exit.
4. **Pre-Treating** (optional) Pre-treat stubborn stains and highly soiled carpet in hallways and other high-traffic areas.
 - a. Generously spray BISSELL Stain PreTreat evenly over soiled area.
Caution: DO NOT OVER-WET CARPET
 - b. Wait 3-5 minutes before deep cleaning.

WARNING

To reduce the risk of fire, use only BISSELL deep cleaning formula for full size machines in your deep cleaner. Use of cleaning formulas that contain lemon or pine oil may damage this appliance and void the guarantee. Chemical spot cleaners or solvent-based soil removers should not be used. These products may react with the plastic materials used in your deep cleaner causing cracking or pitting.

4a.



Fill the tank

1. Remove the solution tank by lifting it straight up, then away from the lower body.
2. Unscrew the black cap at the bottom of the solution tank.
3. Fill with hand hot tap water to the WATER line. Fill the rest of the tank with BISSELL 2X Formula to the FORMULA line. Replace and tighten the black cap.
4. Place solution tank on lower body.

WARNING

To reduce the risk of fire and electric shock due to internal component damage, use only BISSELL cleaning fluids intended for use with the deep cleaner. Non-BISSELL cleaning solutions may harm the machine and void the guarantee.

Tip

» To ensure proper function, make sure the tank is completely seated. Failure to do so can result in reduced or no spray.

1.



2.



3.



4.



Operations

Carpet cleaning

1. Set ReadyTools dial to "FLOOR CLEANING".
2. Plug into proper outlet.
3. Turn the power switch to the ON (I) position (located on the back of unit)
4. With foot, press the red recline lever (located on the back of unit).

NOTE: Handle must be fully reclined for the brush to turn.

5. Cleaning Strokes. While pressing the spray trigger, make one slow forward wet pass and another one back.

Caution: Do not overwet.

6. Release the spray trigger and make one slow forward and backward pass over the same area.

7. Repeat steps 5 and 6 until solution being pulled up appears clean.

8. Empty the collection tank when dirty water reaches the full line, or when the solution tank is empty.

Empty the collection tank

1. Turn power switch OFF (O) and unplug power cord from outlet.
2. Remove the collection tank from base of unit.
 - a. Release collection tank latches (on each side) by pulling up from the bottom of latch and then out.
 - b. Carefully remove the top of the tank by lifting up on the tank handle.
3. Carry collection tank to a toilet or sink. To empty, pour out contents using opening at back of tank.
4. Rinse collection tank thoroughly and replace on unit.
5. Refill solution tank and continue cleaning.

⚠️ WARNING

To reduce the risk of electric shock, push power button Ⓡ off and disconnect plug from electrical outlet before performing maintenance or troubleshooting checks.

1. **3. & 4.** Power Switch



⚠️ CAUTION

Take care not to run over loose objects or edges of area rugs. Stalling the brush may result in premature belt failure.

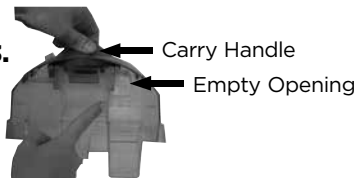
- 2a.



- 2b.



- 3.



Operations

Cleaning with Attachments

Your ReadyClean PowerBrush Plus is equipped with a hose and at least one attachment for cleaning stairs, upholstery, and more.

1. Important! If using to clean upholstery, check upholstery tags.

- a. Check manufacturer's tag before cleaning. "W" or "WS" on the tag means you can use your deep cleaner. If the tag is coded with an "X" or an "S" (with a diagonal stripe through it), or says "Dry Clean Only", do not proceed with any deep cleaning machine. Do not use on velvet or silk. If manufacturer's tag is missing or not coded, check with your furniture dealer.
- b. Check for colourfastness in an inconspicuous place.
- c. If possible, check upholstery stuffing. Coloured stuffing may bleed through fabric when wet.
- d. Plan activities to allow upholstery time to dry.
- e. Vacuum area thoroughly.

2. Follow the instructions on page 7 for Filling the tank.

3. Set the ReadyTools dial to the "TOOLS" setting.

4. Attach the cleaning tool to the end of the hose.

5. Plug in and turn the power switch to the ON position.

NOTE: Handle must be in the full upright position to clean with attachments.

6. Clean by pressing the spray trigger to spray solution onto the area to be cleaned. Slowly move the tool back and forth over the soiled surface. Release the spray trigger to suction dirty water. Continue to clean in the area, working in small sections, until dirt is removed.

Caution: Do Not Overwet.

7. When finished cleaning, remove and rinse tool(s) in clean, running water.

8. It is recommended that you suction clean water from a bowl to rinse out the hose.

9. Lift end of hose and stretch out to ensure all water is cleared from hose.

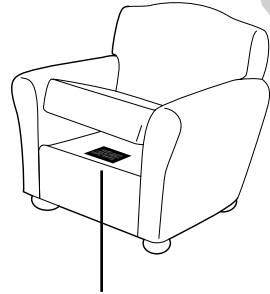
10. Wrap flex hose around hose wrap.

11. Empty collection tank and rinse out, following instructions on page 8 under "Empty the collection tank."

12. Return ReadyTools dial to "FLOOR CLEANING" setting.

IMPORTANT

Check for colourfastness in an inconspicuous place. If possible, check upholstery stuffing. Coloured stuffing may bleed through fabric when it becomes wet.



Manufacturer's tag

3.



4.



8.



9.



Operations

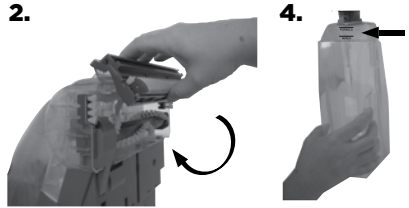
Hard floor cleaning

(Select models only)

1. Remove the collection tank (refer to steps 2a and 2b on page 8).
2. Attach the hard floor tool by hooking it into the front of the removable nozzle and rotate until it snaps firmly in place.
3. Replace the collection tank. Be sure to attach the two latches.
4. Fill the solution tank with warm tap water to the WATER fill line. Fill the rest with BISSELL 2X Hard Floor Solutions™ to FORMULA fill line.
5. Follow steps 1-8 under “Carpet Cleaning” on page 8 to continue cleaning.

WARNING

To reduce the risk of fire and electric shock when cleaning a hard floor, the BISSELL hard floor tool (203-5683) must be used and it must only be used with BISSELL 2X Wash & Shine Hard Floor Solution cleaning fluid intended for use with this appliance.



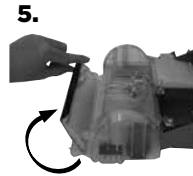
Operations

Cleaning after use

1. Unplug the unit.
2. Rinse collection tank thoroughly.
 - a. Remove ReadyTools Dial by rotating it halfway between "TOOLS" & "FLOOR CLEANING."
 - b. Pop out knob by using the opening on the back of the tank. Rinse and replace knob and collection tank.
3. Remove tank vent & foam filter (located on top of the collection tank) and rinse.
4. Clean nozzle window by lifting latch and removing from machine. Rinse under running water.
5. When finished replace nozzle and secure with latch.

NOTE: For best results, it is recommended that the nozzle is cleaned after each use.

6. Remove lint and hair from red gasket in base of unit. (Do not remove gasket)
7. Replace the collection tank to the base of the machine and secure with latches.



Tip

» Let all parts
dry completely
before storing

Maintenance & Care


Machine storage

For best results, a few simple steps can assure your machine is well maintained after your cleaning is complete.

1. Wrap power cord around Quick Release Cord Wrap™ on side of the machine.
2. Wipe all surfaces with a soft cloth. Store cleaner upright in a protected, dry area.

NOTE: You may have cleaning solution remaining in the solution tank. You may store your machine this way for the next cleaning task, but never keep dirty water in the collection tank.

WARNING

To reduce the risk of electric shock, push power button  off and disconnect plug from electrical outlet before performing maintenance or troubleshooting checks.

CAUTION

Do not store unit where freezing may occur. Damage to internal components may result.

Troubleshooting

WARNING

To reduce the risk of electric shock, push power button  off and disconnect plug from electrical outlet before performing maintenance or troubleshooting checks.

| Problem | Possible causes | Remedies |
|--|---|--|
| Reduced spray OR no spray in upright mode | Solution tank empty | Refill tank with water and formula |
| | Lint screen on solution tank cap clogged | Soak solution tank cap in warm water and then rinse under running water |
| | Upper body not properly attached | Repeat steps 2-6 on page 5 |
| Reduce Spray or No Spray Attachment | Solution tank empty | Refill tank with water and formula |
| | Spray nozzle clogged | Clean spray nozzle by rinsing tool under water |
| | Pump needs priming | Place tool on floor and press spray trigger |
| | Machine is reclined | Return machine to full upright position until it locks into place |
| | ReadyTools dial is set to "FLOOR CLEANING" | Choose "TOOLS" setting on ReadyTools dial |
| Deep cleaner not picking up cleaning solution | Collection tank not aligned/secured | Check tank alignment and secure with side latches |
| | Collection tank full | Empty tank |
| | Removable nozzle installed improperly | Unplug unit. Align four "hooks" into bottom first, then snap into place on top |
| | Removable nozzle full of debris | Unplug unit. Remove nozzle and rinse under running water |
| | Red lint screen under collection tank clogged | Remove debris from lint screen |
| | ReadyTools dial not set properly | Choose either "FLOOR CLEANING" or "TOOLS" for desired cleaning method |
| Brush not turning | Handle not reclined | Press the red recline lever on the back of the unit to activate the brush. Follow step 4 under "Carpet cleaning" on page 8 |

Please do not return this product to the store.



Other maintenance or service not included in the manual should be performed by an authorized service representative.

Thank you for selecting a BISSELL product.



Replacement Parts

These items are available for your BISSELL deep cleaner.
Visit www.BISSELL.com

| PART # | PART NAME | | PART # | PART NAME | |
|----------|--|---|----------|---------------------------------|---|
| 203-5661 | Solution Tank (Includes Cap and Insert Assembly) |  | 203-8271 | Collection Tank (with diverter) |  |
| 203-8241 | Cord Wrap (upper) |  | 203-5658 | Hose Wrap Clip |  |
| 203-5659 | Lower Hose Wrap |  | 203-8224 | Nozzle |  |
| 203-5662 | Solution Tank Cap & Insert |  | 203-5683 | Hard Floor Tool |  |

*Not all parts are included with every model.

Accessories

These items are available for your BISSELL deep cleaner.
Visit www.BISSELL.com

| PART # | PART NAME | | PART # | PART NAME | |
|----------|-----------------------|---|----------|--|---|
| 203-6651 | 3" Tough Stain Tool |  | 203-6652 | Powered TurboBrush™ Hand Tool |  |
| 203-6653 | 4" Upholstery Tool |  | 203-6654 | 6" Stair Tool |  |
| 203-6655 | Spraying Crevice Tool |  | 203-0116 | Spraying, 2-in-1 Crevice Tool w/ Brush |  |
| 203-7569 | Deep Reach™ Tool |  | 203-5548 | Hard Floor Tool |  |

*Not all parts are included with every model.

Cleaning Formula: Refer to bottom of page 4 of this guide for a full selection of cleaning formula available for purchase.

Consumer Guarantee

This Guarantee only applies outside of the USA and Canada. It is provided by BISSELL International Trading Company BV ("BISSELL").

This Guarantee is provided by BISSELL. It gives you specific rights. It is offered as an additional benefit to your rights under law. You also have other rights under law which may vary from country to country. You can find out about your legal rights and remedies by contacting your local consumer advice service. Nothing in this Guarantee will replace or lessen any of your legal rights or remedies. If you need additional instruction regarding this Guarantee or have questions regarding what it may cover, please contact BISSELL Consumer Care or contact your local distributor. This Guarantee is given to the original purchaser of the product from new and is not transferable. You must be able to evidence the date of purchase in order to claim under this Guarantee.

Limited Two-Year Guarantee

Subject to the *EXCEPTIONS AND EXCLUSIONS identified below, BISSELL will for two years from the date of purchase by the original purchaser repair or replace (with new or remanufactured components or products), at BISSELL's option, free of charge, any defective or malfunctioning part or product. BISSELL recommends that the original packaging and evidence of the date of purchase be kept for the duration of the Guarantee period in case the need arises within the period to claim on the Guarantee. Keeping the original packaging will assist with any necessary re-packaging and transportation but is not a condition of the Guarantee.

If for your product is replaced by BISSELL under this Guarantee, the new item will benefit from the remainder of the term of this Guarantee (calculated from the date of the original purchase). The period of this Guarantee shall not be extended whether or not your product is repaired or replaced.

*EXCEPTIONS AND EXCLUSIONS FROM THE TERMS OF THE GUARANTEE

This Guarantee applies to products used for personal domestic use and not commercial or hire purposes. Consumable components such as filters, belts and mop pads, which must be replaced or serviced by the user from time to time, are not covered by this Guarantee.

This Guarantee does not apply to any defect arising from fair wear and tear. Damage or malfunction caused by the user or any third party whether as a result of accident, negligence, abuse, neglect, or any other use not in accordance with the User Guide is not covered by this Guarantee.

An unauthorised repair (or attempted repair) will void this Guarantee whether or not damage has been caused by that repair/attempt.

Removing or tampering with the Product Rating Label on the product or rendering it illegible will void this Guarantee.

SAVE AS SET OUT BELOW BISSELL AND ITS DISTRIBUTORS ARE NOT LIABLE FOR ANY LOSS OR DAMAGE THAT IS NOT FORESEEABLE OR FOR INCIDENTAL OR CONSEQUENTIAL DAMAGES OF ANY NATURE ASSOCIATED WITH THE USE OF THIS PRODUCT INCLUDING WITHOUT LIMITATION LOSS OF PROFIT, LOSS OF BUSINESS, BUSINESS INTERRUPTION, LOSS OF OPPORTUNITY, DISTRESS, INCONVENIENCE OR DISAPPOINTMENT. SAVE AS SET OUT BELOW BISSELL'S LIABILITY WILL NOT EXCEED THE PURCHASE PRICE OF THE PRODUCT.

BISSELL DOES NOT EXCLUDE OR LIMIT IN ANY WAY ITS LIABILITY FOR (A) DEATH OR PERSONAL INJURY CAUSED BY OUR NEGLIGENCE OR THE NEGLIGENCE OF OUR EMPLOYEES, AGENTS OR SUBCONTRACTORS; (B) FRAUD OR FRAUDULENT MISREPRESENTATION; (C) OR FOR ANY OTHER MATTER WHICH CANNOT BE EXCLUDED OR LIMITED UNDER LAW.

FOR AUSTRALIAN CONSUMERS ONLY:

OUR GOODS COME WITH GUARANTEES THAT CANNOT BE EXCLUDED UNDER THE AUSTRALIAN CONSUMER LAW. YOU ARE ENTITLED TO A REPLACEMENT OR REFUND FOR A MAJOR FAILURE AND FOR COMPENSATION FOR ANY OTHER REASONABLY FORESEEABLE LOSS OR DAMAGE. YOU ARE ALSO ENTITLED TO HAVE THE GOODS REPAIRED OR REPLACED IF THE GOODS FAIL TO BE OF ACCEPTABLE QUALITY AND THE FAILURE DOES NOT AMOUNT TO A MAJOR FAILURE.

THIS GUARANTEE IS IN ADDITION TO OTHER RIGHTS OR REMEDIES UNDER LAW. NOTHING IN THIS GUARANTEE EXCLUDES, LIMITS OR MODIFIES ANY LIABILITY OF BISSELL WHICH IS IMPOSED BY LAW, OR LIMITS OR MODIFIES ANY REMEDY AVAILABLE TO THE CONSUMER WHICH IS GRANTED BY LAW. TO MAKE A CLAIM UNDER THIS GUARANTEE CONTACT BISSELL AUSTRALIA PTY LTD (DETAILS ABOVE). CONTACT BISSELL PRIOR TO RETURNING ANY GOODS. WHERE AGREED, BISSELL WILL REIMBURSE REASONABLE POSTAGE / HANDLING COSTS (IF ANY) FOR RETURNING GOODS TO BISSELL.

Consumer Care

If your BISSELL product should require service or to claim under our Limited Two-Year Guarantee, please visit:

Website or E-mail:

www.BISSELL.com

For Australian inquiries:

Monday - Friday 9am - 5pm

BISSELL AUSTRALIA PTY LIMITED

42 Rocco Dr.
Scoresby 3179

Victoria
Australia
Telephone: 1-800-811-183

For New Zealand inquiries:

Monday - Friday 9 am - 5 pm

Parex Industries Ltd.

5 Tolich Place
Henderson 0610
Auckland
New Zealand
Telephone: 0800-247-735

Replacement parts and accessories are available for purchase. To purchase visit www.BISSELL.com

Visit the BISSELL website: www.BISSELL.com

When contacting BISSELL, have model number of cleaner available.

Please record your Model Number: _____ Please record your Purchase Date: _____

NOTE: Please keep your original sales receipt. It provides proof of the date of purchase in the event of a Guarantee claim. See Guarantee for details.



©2014 BISSELL Homecare, Inc
Grand Rapids, Michigan
All rights reserved. Printed in China
Part Number 160-4226 Rev 05/14 Rev A
Visit our website at: www.BISSELL.com
Scotchgard is a trademark of 3M
Microban® is a registered trademark of Microban Products Company

Ambi Pur is a trademark of The Proctor & Gamble Company, Cincinnati, Ohio used under license by BISSELL Homecare, Inc.