

Bissell[®]
PROFESSIONAL



LIFT-OFF[®]
PROFESSIONAL

21776 SERIES

IMPORTANT SAFETY INSTRUCTIONS

READ ALL INSTRUCTIONS BEFORE USING YOUR VACUUM.

When using an electrical appliance, basic precautions should be observed, including the following:



WARNING

TO REDUCE THE RISK OF FIRE, ELECTRIC SHOCK, OR INJURY:

- » Do not leave appliance when plugged in.
- » Unplug from electrical socket when not in use and before servicing.
- » Do not allow to be used as a toy.
- » This appliance can be used by children aged from 8 years and above and persons with reduced physical, sensory and mental capabilities or lack of experience and knowledge if they have been given supervision or instruction concerning use of the appliance in a safe way and understand the hazards involved. Cleaning and user maintenance shall not be made by children without supervision.
- » Children should be supervised to ensure that they do not play with the appliance.
- » Use only as described in this user guide.
- » Use only manufacturer's recommended attachments.
- » Do not use with damaged cable or plug.
- » If the supply cable is damaged, it must be replaced by the manufacturer, its service agent or similarly qualified persons in order to avoid a hazard.
- » Do not immerse in water or liquid.
- » If appliance is not working as it should, has been dropped, damaged, left outdoors, or dropped into water; do not attempt to operate it and return it to a service center.
- » Do not pull or carry by cable, use cable as a handle, close door on cable, or pull cable around sharp edges or corners.
- » Do not run appliance over cable.
- » Keep cable away from heated surfaces.
- » Do not unplug by pulling on cable.
- » To unplug, grasp the plug, not the cable.
- » Do not handle plug or appliance with wet hands.
- » Do not put any object into openings.
- » Do not use with any opening blocked; keep free of dust, lint, hair, and anything that may reduce air flow.
- » Keep hair, loose clothing, fingers, and all parts of body away from openings and moving parts of the appliance and its accessories.
- » Turn off all controls before unplugging.
- » Use extra care when cleaning on stairs.
- » Do not use to pick up flammable or combustible liquids, such as petroleum, or use in areas where they may be present.
- » Do not pick up toxic material (chlorine bleach, ammonia, drain cleaner, etc.)
- » Do not use appliance in an enclosed space filled with vapours given off by oil base paint, paint thinner, some mothproofing substances, flammable dust, or other explosive or toxic vapours.
- » Do not pick up hard or sharp objects such as glass, nails, screws, coins, etc.
- » Use only on dry, indoor surfaces.
- » Keep appliance on a level surface.
- » Do not pick up anything that is burning or smoking, such as cigarettes, matches, or hot ashes.
- » Do not use without dust bag and/or filters in place.
- » Do not use outdoors or on wet surfaces
- » If your appliance is fitted with a nonrewireable BS 1363 plug it must not be used unless a 13 amp (ASTA approved to BS 1362) fuse is fitted in the carrier contained in the plug. (Spares may be obtained from your BISSELL supplier). If for any reason the plug is cut off, it must be disposed of, as it is an electric shock hazard should it be inserted into a mains socket
- » Do not leave machine running in the same spot without handle fully upright.

SAVE THESE INSTRUCTIONS FOR FUTURE USE

FOR OPERATION ON A 220-240 VOLT A.C. 50/60 HZ POWER SUPPLY ONLY.

This model is for household use only.

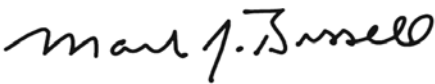
Thanks for buying a BISSELL vacuum

We're glad you purchased a BISSELL vacuum. Everything we know about floor care went into the design and construction of this complete, high-tech home cleaning system.

Your BISSELL vacuum is well made, and we back it with a limited two-year guarantee. We also stand behind it with a knowledgeable, dedicated Consumer Care department, so, should you ever have a problem, you'll receive fast, considerate assistance.

My great-grandfather invented the floor sweeper in 1876. Today, BISSELL is a global leader in the design, manufacture, and service of high quality homecare products like your BISSELL vacuum.

Thanks again, from all of us at BISSELL.



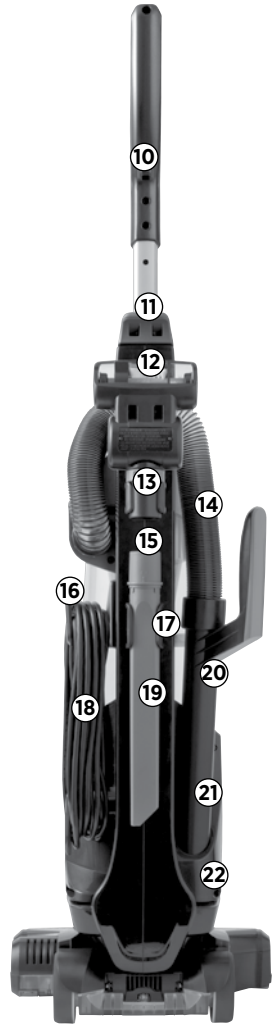
Mark J. Bissell
Chairman & CEO

Safety Instructions.....	2
Product View.....	4
Assembly	5
Operations	5-7
Maintenance & Care	8-10
Troubleshooting	11
Consumer Care.....	11
Guarantee.....	12

Product View



- 1 Handle
- 2 Lift-Off Pod Release Button
- 3 Dirt Tank Release Button
- 4 Carry Handle
- 5 Power Switch
- 6 Brush Roll Power Switch
- 7 Bottom Easy Empty™ Dirt Tank
- 8 Filter Cover (Pre-Motor Filters (2) and Post-Motor Filter are located underneath Filter Cover)
- 9 Powerfoot
- 10 Cord Clip
- 11 Handle Height Adjustment Button
- 12 Specialty Tool (Select models include TurboBrush® Tool or Pet TurboEraser® Tool)
- 13 Specialty Tool Mount
- 14 Stretch Hose
- 15 Crevice Tool
- 16 Quick Release® Cord Wrap
- 17 Crevice Tool or Extension Wand Mount (select models)
- 18 Power Cord
- 19 Extension Wand (select models)
- 20 Variable Suction Ring
- 21 Hose Wand
- 22 Hose Wand Base



⚠ WARNING
Plastic film can be dangerous. To avoid danger of suffocation, keep away from babies and children.

⚠ WARNING
Do not plug in your vacuum cleaner until you are familiar with all instructions and operating procedures.

⚠ WARNING
To reduce the risk of electric shock, turn power switch off and disconnect polarized plug from electrical outlet before performing maintenance or troubleshooting checks.

Assembly

No tools required for assembly.

Attach handle to vacuum

Locate the vacuum base and the handle. Stand the vacuum base upright and slide the handle into the opening at the top of the vacuum base. The handle will click into place at the highest height setting.

NOTE: The handle has two height settings. To lower or raise the handle, push the handle height adjustment button (designated by the corresponding icon pictured below) and slide the handle up or down until it locks into place.



WARNING

Do not plug in your vacuum cleaner until you are familiar with all instructions and operating procedures.

WARNING

Plastic film can be dangerous. To avoid danger of suffocation, keep away from babies and children.

Attach vacuum hose and tools

1. Attach the Twist n' Snap™ hose by lining up the tabs on the hose cuff with the corresponding notches on the back of the vacuum. Twist the hose cuff clockwise to lock the hose into place.

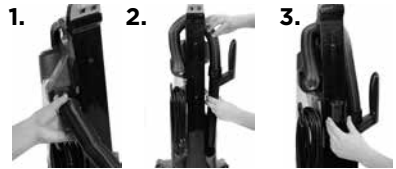
2. Slide the end of the hose wand into the hose wand base and fold the hose over the upper hose wrap.

NOTE: The powerfoot will not operate effectively unless the hose is firmly attached to the base.

3. Slide the crevice tool/extension wand holder onto the lower mount on the back of the vacuum as shown. Snap the crevice tool into the tool holder.

4. Slide the specialty tool holder onto the upper mount on the back of the vacuum as shown. Snap the TurboBrush Tool into the tool holder.

5. Wrap the power cord around the cord wrap clips.




Tip

» Your vacuum features a quick-release cord wrap. To remove the power cord quickly and easily, rotate the upper cord wrap towards floor, and slip power cord off from upper cord wrap.

Operations

Power switch/brush switch

The power switch is located just below the handle on the front of the detachable pod. Push the switch once to turn the vacuum on and again to turn the vacuum off when cleaning is complete.

 The brush roll power switch is located just below the handle on the front of the detachable pod above the power switch. This switch turns the rotating brush power on and off. The switch will glow when activated.

NOTE: The brush roll power will automatically shut off whenever the vacuum is locked in its upright position. The switch will continue to glow if left on in the upright position or if the pod is detached from the vacuum base, although the brush will not reactivate until the pod is attached and the vacuum is detented.

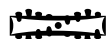
CAUTION

Before using your vacuum, make sure that the dirt container is in locked position and that all filters (pre-motor and post-motor) are in place. Do not operate your vacuum without these filters.

power



brush



Operations

Handle position

1. Upright - For storage and above floor cleaning with special tools.

2. Normal Cleaning - Step on the left side of the vacuum powerfoot and pull back on the handle to detent the vacuum. The icon pictured to the right indicates where to step.



Special tools

Your vacuum is not only a powerful floor vacuum cleaner, it's also a versatile stairs and above floor vacuum when you select one of the special tools.

NOTE: The tools can be used with the vacuum in the upright position or with the removable pod.

1. Remove the vacuum hose by grasping the hose wand grip and lifting to separate from the hose wand base.

2. Attach tools by firmly pushing onto the hose wand.

a. Crevice Tool: use in tight, narrow spaces.

b. Extension Wand (select models): use with desired attachment for a longer reach.

c. Bendable Extension Wand (select models): Attach to the extension wand and add desired attachment for even longer reach. Position the elbow in the straight or bent position for improved cleaning angle with different surfaces and tools.

d. TurboBrush Tool (select models): use rotating brush action for small, flat areas such as stairs and cushions. Press down gently and pull toward you in a raking motion; excessive force will cause the brush to stop rotating.

e. Pet TurboEraser Tool (select models): use to remove dirt and pet hair from stairs, upholstery, area rugs, and other small areas. Pull the tool toward you in a raking motion.

NOTE: The Pet TurboEraser Tool is designed to remove pet hair from upholstered or carpeted surfaces. It should not be used on pets.

f. Pet Hair Fabric Tool (select models): use this tool on fabrics such as drapes, beds, or anywhere else pet hair may collect.

g. Long Reach Dusting Tool (select models): use this tool for dusting large surfaces.

NOTE: The Long Reach Dusting Tool is not intended to be used to clean TV or computer screens.

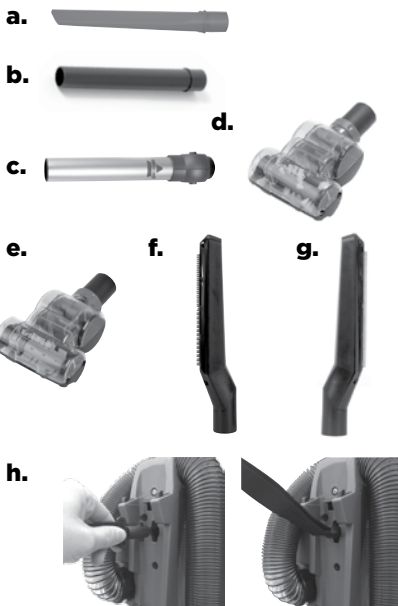
h. Carry Strap (select models): use the carry strap to support the portable pod when cleaning hard to reach areas. To attach strap, remove pod from base of machine, place the hook into the back of the machine and turn clockwise until it snaps into place.

ATTENTION

Some Frieze carpets or long fibre or threads may be damaged by the rotating brush during vacuuming. It is recommended the rotating brush be turned OFF when cleaning this type of carpet.

Tip

» Before cleaning under low furniture, check area first for objects that might harm the unit or block the vacuum hose.



CAUTION

Test the carry strap to make sure it is secure before using.

CAUTION

Always place vacuum cleaner on floor in its fully upright position and make sure it is locked into place before removing pod or when using tools. Placing the vacuum in its full upright position automatically stops the rotating brush.

NOTICE:

While vacuuming, certain carpets and low humidity conditions may generate small static discharges. The discharges are entirely harmless and are not associated in any way with the main power supply.

Operations

Cleaning with the removable pod

The Lift-Off™ vacuum pod easily detaches from the vacuum base for cleanups on stairs and in other hard-to-reach areas in your home.

Before removing the pod, your vacuum must be in its fully upright position. You do not need to turn off the power before removing the pod.

1. Press the Lift-Off™ pod release button at the base of the vacuum handle and lift the vacuum pod off its base.
2. Grasp the hose wand grip and lift to separate the hose from the hose wand base.
3. Connect the desired hose attachment to the hose wand, or use the hose wand on its own.
4. When you're finished using the desired hose attachment, remove the hose attachment from the hose wand and reconnect the hose wand to the hose wand base.
5. Return the vacuum pod to the vacuum base by aligning the pod base to the vacuum base. Push the pod onto the vacuum base until it 'clicks' into place.



LIFT OFF



WARNING

While the vacuum is in use, warm air is emitted through the post-motor filter on the front of the pod. The bottom of the pod may also become warm.

Variable Suction Ring

When using your vacuum on high pile carpet and area rugs, open the variable suction ring for easier steering and maneuverability.

Open the variable suction ring for less suction and close it for more suction.



Variable Suction Ring

Power cord storage

When you are done using your vacuum, return it to the upright position and store the power cord.

1. Turn vacuum cleaner off.
2. Unplug power cord by grasping the plug (NOT the cord) and disconnect from outlet.
3. Loop power cord around cord wraps on side of the pod.
4. Clip molded plug to power cord to secure.

Transporting Cleaner

1. To move your vacuum cleaner from room to room, put the handle in the upright position, tilt the cleaner back on its rear wheels and push forward.

2. The vacuum can also be transported by grasping the carry handle on the Lift-Off™ vacuum pod.



Maintenance & Care

To maintain maximum cleaning performance, the following maintenance steps must be performed:

1. Empty the dirt container when the dirt reaches the "Full" line.
2. Check the pre-motor filters at least once a month and clean and replace as needed.
3. Check and replace the post-motor filter as needed.

NOTE: More frequent filter cleaning may be necessary if you are vacuuming new carpet, fine dust or have allergy concerns.

Follow the instructions on the following pages to perform these simple maintenance steps.

WARNING

To reduce the risk of electric shock, turn power switch off and disconnect polarized plug from electrical outlet before performing maintenance or troubleshooting checks.

WARNING

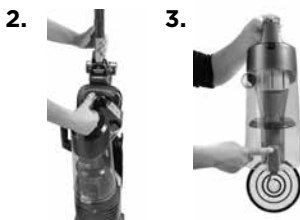
Do not operate cleaner with damp or wet filters or without vacuum bags and all filters in place.

Empty Dirt Container

The dirt tank needs to be emptied when the dirt reaches the 'Full' line on the side of the tank.

1. Unplug cleaner from electrical outlet.
2. Remove the Easy Empty dirt tank from the vacuum base by pushing the tank release button.
3. Hold the dirt tank over a garbage container. Press the bottom lid release button on the back of the dirt tank to empty dirt.
4. Mount the Easy Empty dirt tank on the vacuum base.

NOTE: The dirt tank may be washed in warm water with a mild detergent. Make sure it is completely dry before replacing.



Cleaning the inner cyclone

Unplug the cleaner from electrical outlet.

1. With the bottom of the Easy Empty dirt tank open, reach up into the tank and grasp the cyclone. Twist the cyclone counter-clockwise to unlock and pull straight down to remove.
2. The inner cyclone and dirt tank may be wiped clean with a damp cloth. Make sure all parts are dry before replacing.



Replacing the post-motor filter

1. The post-motor filter assists in the filtration process to return clean air to the room. The post-motor filter is located on the front of the vacuum underneath the filter cover. (Instructions for removing the filter cover listed above.)
2. If the post-motor filter appears dirty, remove the filter and gently tap the filter on the edge of a waste basket to clear any accumulated dust and debris.



NOTE: The post-motor filter is a pleated filter. This filter is not washable and must be replaced when it becomes dirty.

Maintenance & Care

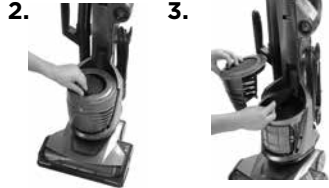
Cleaning the pre-motor filters

1. Unplug the vacuum from electrical outlet
2. The pre-motor filters protect the motor from dirt particles and are located underneath the dirt tank. To access the filters, first remove the dirt tank. Next, lift up on the tab attached to the filter cover.
3. There are two pre-motor filters; one foam filter on top and a thinner fibre filter directly underneath it. If the filters appear dirty, remove both filters. Both pre-motor filters may be hand washed in cold water with mild detergent. Rinse well and air dry thoroughly before replacing the filters. The foam filter is made of two parts a black and yellow part joined together. When replacing the filter the yellow part should be placed towards the vacuum motor.

NOTE: The thinner fibre filter should be placed underneath the foam filter.

WARNING

To reduce the risk of electric shock, turn power switch off and disconnect polarized plug from electrical outlet before performing maintenance or troubleshooting checks.



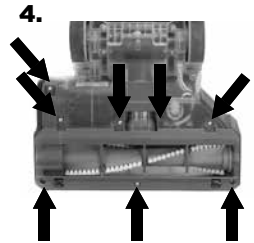
Rotating brush and drive belt maintenance

Check your vacuum cleaner's rotating floor brush and drive belt regularly for debris, wear or damage. Debris can wrap around the brush and hamper its ability to effectively clean your carpet.

1. Unplug cleaner from electrical outlet.
2. Remove detachable pod from vacuum cleaner.
3. Recline handle and turn vacuum cleaner over so bottom side is up.
4. Remove the eight screws as shown with a Phillips head screwdriver. Lift the brush cover off.
5. Lift the rotating floor brush to remove. Clean strings, hair and other debris from the brush, paying special attention to the brush ends.
6. Check air passageway for obstructions. Remove any debris from this area.
7. Clean debris from the motor pulley and drive belt areas.
8. Check drive belt carefully for wear, cuts or stressed areas. If any damage is present, discard old drive belt and replace.

WARNING

To reduce the risk of electric shock, turn power switch off and disconnect polarized plug from electrical outlet before performing maintenance or troubleshooting checks.



Replace drive belt

1. Unplug the vacuum from electrical outlet.
2. With rotating floor brush removed from vacuum cleaner (Steps 1-8 of check rotating floor brush and drive belt), grasp old drive belt and remove from motor pulley. Discard the old drive belt.
3. Place new drive belt over motor pulley and loop other end over rotating floor brush in the space between the bristles.

Maintenance & Care

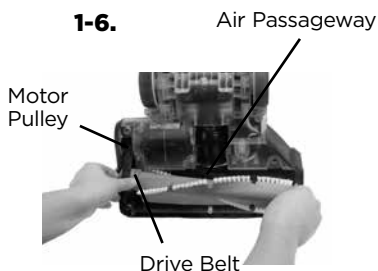
Replace drive belt (continued)

NOTE: It is important that you use only genuine BISSELL replacement belts. Generic belts may not meet the exacting specifications required to keep your vacuum operating at its peak performance. The use of unbranded belts could lead to early failure of the vacuum and could void your guarantee.

4. Pull the rotating floor brush firmly into position, stretching the drive belt, and place ends of rotating floor brush down into the slots on sides as shown. Alignment of brush ends in slots is necessary to fully insert the brush.

5. Turn rotating floor brush by hand several times in the direction of motor pulley. If properly installed, drive belt will center itself on rotating brush crown.

6. Reposition brush cover and screw back into place.



Maintaining the TurboBrush Tool and Pet TurboEraser Tool

The TurboBrush Tool should be checked regularly for clogs or debris wrapping around the brush. Select models include a Pet TurboEraser Tool that follows the same maintenance instructions.

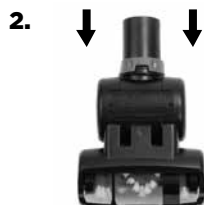
1. Unplug the vacuum from electrical outlet.

2. If a clog is present or debris is visible, twist the grey collar counterclockwise to remove the faceplate and clear any obstructions.

3. To clean debris from the brush, remove the brush from the drive belt and clean debris.

4. Reposition the drive belt on the brush. Please ends of the brush in slots on sides.

5. Reposition the faceplate and secure by twisting the grey collar clockwise.



Clearing clogs

Low suction or poor pickup may be due to clog in the vacuum cleaner. If you notice a change in the sound of the motor or a reduction in the spinning action, check for clogs.

1. Unplug cleaner from electrical outlet.

2. Empty dirt container.

3. Check upper tank for build up or clogs.

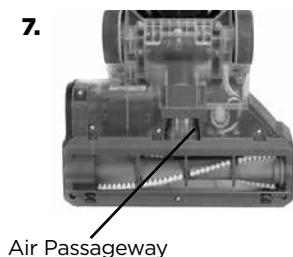
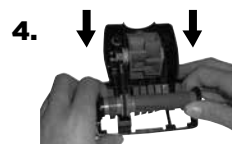
4. Remove the secondary cyclone and check the suction inlet for a clog.

5. Grasp the hose grip and lift to separate from the suction opening. Check for a clog in the base or hose.

6. Release the Twist n' Snap hose from the vacuum by turning to the left. Straighten the hose and unclog with a long, narrow object such as a broomstick.

7. If the low suction persists, follow the instructions for checking the rotating brush on page 9 and inspect the air passageway for obstructions.

8. Check all filters for clogs, per instructions on page 9.



Troubleshooting

WARNING

To reduce the risk of electric shock, turn power switch off and disconnect polarized plug from electrical outlet before performing maintenance or troubleshooting checks.

Problem	Possible causes	Remedies
Vacuum cleaner won't turn on	Power cord not plugged in	Check electrical plug
	Blown fuse/tripped breaker	Check/replace fuse or reset breaker
No power at rotating floor brush	Pod is not securely seated	Remove pod and replace, making sure that it "clicks" into place
	Brush switch turned to "OFF"	Make sure brush switch is in "ON" position
	Vacuum is in upright position	Recline vacuum to operate brush
Vacuum cleaner won't pick up dirt	Hose not attached to suction opening	Grasp quick reach handle and firmly push hose wand onto the suction opening
	Crack or hole in hose	Check hose and replace if needed
	Broken or worn drive belt	Replace drive belt, see pages 10, 11
	Rotating floor brush bristles worn	Replace brush
	Rotating floor brush jammed	Remove brush and clean debris from brush ends
	Clog in vacuum	Follow instructions on page 12 for clearing clogs
	Dirt container full	Empty dirt container
	Dirt container or secondary cyclone not installed properly	Position correctly and lock in place
Filters are dirty	Check and clean pre-motor and post-motor filters, see page 9	
Visible dirt escaping from cleaner	Dirt container full	Empty dirt container
	Filters or secondary cyclone missing or installed incorrectly	Check secondary cyclone, pre-motor and post-motor filters for correct installation
	Dirt container installed incorrectly	Pull out and re-insert dirt container correctly

Please do not return this product to the store.

Other maintenance or service not included in the manual should be performed by an authorized service representative.

Thank you for selecting a BISSELL product.

Please Call 1300.247.735 (Australia) or 0800.247.735 (New Zealand)

Consumer Guarantee

This Guarantee only applies outside of the USA and Canada. It is provided by BISSELL International Trading Company BV ("BISSELL").

This Guarantee is provided by BISSELL. It gives you specific rights. It is offered as an additional benefit to your rights under law. You also have other rights under law which may vary from country to country. You can find out about your legal rights and remedies by contacting your local consumer advice service. Nothing in this Guarantee will replace or lessen any of your legal rights or remedies. If you need additional instruction regarding this Guarantee or have questions regarding what it may cover, please contact BISSELL Consumer Care or contact your local distributor.

This Guarantee is given to the original purchaser of the product from new and is not transferable. You must be able to evidence the date of purchase in order to claim under this Guarantee.

Limited Two-Year Guarantee

Subject to the *EXCEPTIONS AND EXCLUSIONS identified below, BISSELL will for two years from the date of purchase by the original purchaser repair or replace (with new or remanufactured components or products), at BISSELL'S option, free of charge, any defective or malfunctioning part or product.

BISSELL recommends that the original packaging and evidence of the date of purchase be kept for the duration of the Guarantee period in case the need arises within the period to claim on the Guarantee. Keeping the original packaging will assist with any necessary re-packaging and transportation but is not a condition of the Guarantee.

If for your product is replaced by BISSELL under this Guarantee, the new item will benefit from the remainder of the term of this Guarantee (calculated from the date of the original purchase). The period of this Guarantee shall not be extended whether or not your product is repaired or replaced.

*EXCEPTIONS AND EXCLUSIONS FROM THE TERMS OF THE GUARANTEE

This Guarantee applies to products used for personal domestic use and not commercial or hire purposes. Consumable components such as filters, belts and mop pads, which must be replaced or serviced by the user from time to time, are not covered by this Guarantee.

This Guarantee does not apply to any defect arising from fair wear and tear. Damage or malfunction caused by the user or any third party whether as a result of accident, negligence, abuse, neglect, or any other use not in accordance with the User Guide is not covered by this Guarantee.

An unauthorised repair (or attempted repair) will void this Guarantee whether or not damage has been caused by that repair/attempt.

Removing or tampering with the Product Rating Label on the product or rendering it illegible will void this Guarantee.

SAVE AS SET OUT BELOW BISSELL AND ITS DISTRIBUTORS ARE NOT LIABLE FOR ANY LOSS OR DAMAGE THAT IS NOT FORESEEABLE OR FOR INCIDENTAL OR CONSEQUENTIAL DAMAGES OF ANY NATURE ASSOCIATED WITH THE USE OF THIS PRODUCT INCLUDING WITHOUT LIMITATION LOSS OF PROFIT, LOSS OF BUSINESS, BUSINESS INTERRUPTION, LOSS OF OPPORTUNITY, DISTRESS, INCONVENIENCE OR DISAPPOINTMENT. SAVE AS SET OUT BELOW BISSELL'S LIABILITY WILL NOT EXCEED THE PURCHASE PRICE OF THE PRODUCT.

BISSELL DOES NOT EXCLUDE OR LIMIT IN ANY WAY ITS LIABILITY FOR (A) DEATH OR PERSONAL INJURY CAUSED BY OUR NEGLIGENCE OR THE NEGLIGENCE OF OUR EMPLOYEES, AGENTS OR SUBCONTRACTORS; (B) FRAUD OR FRAUDULENT MISREPRESENTATION; (C) OR FOR ANY OTHER MATTER WHICH CANNOT BE EXCLUDED OR LIMITED UNDER LAW.

FOR AUSTRALIAN CONSUMERS ONLY:

OUR GOODS COME WITH GUARANTEES THAT CANNOT BE EXCLUDED UNDER THE AUSTRALIAN CONSUMER LAW. YOU ARE ENTITLED TO A REPLACEMENT OR REFUND FOR A MAJOR FAILURE AND FOR COMPENSATION FOR ANY OTHER REASONABLY FORESEEABLE LOSS OR DAMAGE. YOU ARE ALSO ENTITLED TO HAVE THE GOODS REPAIRED OR REPLACED IF THE GOODS FAIL TO BE OF ACCEPTABLE QUALITY AND THE FAILURE DOES NOT AMOUNT TO A MAJOR FAILURE.

THIS GUARANTEE IS IN ADDITION TO OTHER RIGHTS OR REMEDIES UNDER LAW. NOTHING IN THIS GUARANTEE EXCLUDES, LIMITS OR MODIFIES ANY LIABILITY OF BISSELL WHICH IS IMPOSED BY LAW, OR LIMITS OR MODIFIES ANY REMEDY AVAILABLE TO THE CONSUMER WHICH IS GRANTED BY LAW. TO MAKE A CLAIM UNDER THIS GUARANTEE CONTACT BISSELL AUSTRALIA PTY LTD (DETAILS ABOVE). CONTACT BISSELL PRIOR TO RETURNING ANY GOODS. WHERE AGREED, BISSELL WILL REIMBURSE REASONABLE POSTAGE / HANDLING COSTS (IF ANY) FOR RETURNING GOODS TO BISSELL.

Consumer Care

If your BISSELL product should require service or to claim under our Limited Two-Year Guarantee, please contact us as follows:

Website:

www.BISSELL.com

Email:

Australia: consumeraus@bissell.com

New Zealand: consumernz@bissell.com

Write:

BISSELL AUSTRALIA PTY LIMITED
42 Rocco Dr.
Scoresby 3179
Victoria
Australia

Telephone:

Australia: 1300-247-735

New Zealand: 0800-247-735

Replacement parts and accessories are available for purchase. To purchase visit www.BISSELL.com

Visit the BISSELL website: www.BISSELL.com

When contacting BISSELL, have model number of cleaner available.

Please record your Model Number: _____ Please record your Purchase Date: _____

NOTE: Please keep your original sales receipt. It provides proof of the date of purchase in the event of a Guarantee claim. See Guarantee for details.



©2016 BISSELL Homecare, Inc
Grand Rapids, Michigan
All rights reserved. Printed in China
Part Number 160-9779 Rev 04/16
Visit our website at: www.BISSELL.com