



# CLEANVIEW™ ESSENTIAL

2009 SERIES

# IMPORTANT SAFETY INSTRUCTIONS


## READ ALL INSTRUCTIONS BEFORE USING YOUR DEEP CLEANER.

When using an electrical appliance, basic precautions should be observed, including the following.

### **WARNING** TO REDUCE THE RISK OF FIRE, ELECTRIC SHOCK, OR INJURY:

- » Unplug from electrical socket when not in use and before cleaning, maintaining or servicing the appliance.
- » This appliance can be used by children aged from 8 years and above and persons with reduced physical, sensory or mental capabilities or lack of experience and knowledge if they have been given supervision or instruction concerning use of the appliance in a safe way and understand the hazards involved. Cleaning and user maintenance shall not be made by children without supervision.
- » Children should be supervised to ensure that they do not play with the appliance.
- » If the supply cable is damaged, it must be replaced by the manufacturer, its service agent or similarly qualified persons in order to avoid a hazard.
- » Do not run appliance over cable.
- » Keep hair, loose clothing, fingers, and all parts of body away from openings and moving parts of the appliance and its accessories.
- » Use only the type and amount of liquids specified under the Operations section of this guide.
  - » Do not leave appliance when plugged in.
  - » Always connect to a properly earthed electrical socket. Do not modify earthed plug.
  - » Use indoors only.
  - » Do not allow to be used as a toy.
  - » Use only as described in the user guide.

- » Use only manufacturer's recommended attachments.
- » Do not use with damaged cable or plug.
- » Do not immerse in water or liquid.
- » If appliance is not working as it should, has been dropped, damaged, left outdoors, or dropped into water; do not attempt to operate it and have it repaired at an authorized service center.
- » Liquid or steam must not be directed towards equipment containing electrical components.
- » Do not pull or carry by cable, use cable as a handle, close door on cable, or pull cable around sharp edges or corners.
- » Keep cable away from heated surfaces.
- » Do not unplug by pulling on cable.
- » To unplug, grasp the plug, not the cable.
- » Do not handle plug or appliance with wet hands.
- » Do not put any object into openings.
- » Do not use with any opening blocked; keep free of dust, lint, hair, and anything that may reduce air flow.
- » Turn off all controls before unplugging.
- » Use extra care when cleaning on stairs.
- » Do not use to pick up flammable or combustible liquids, such as petrol, or use in areas where they may be present.
- » Do not pick up toxic material (chlorine bleach, ammonia, drain cleaner, etc.)
- » Do not use appliance in an enclosed space filled with vapors given off by oil base paint, some mothproofing substances, flammable dust, or other explosive or toxic vapors.
- » Do not pick up hard or sharp objects such as glass, nails, screws, coins, etc.
- » Keep appliance on a level surface.
- » Do not carry appliance while in use.
- » Unplug before attaching the TurboBrush™ tool.

 **WARNING**  
TO REDUCE THE RISK OF FIRE AND ELECTRIC SHOCK, USE INDOORS ONLY . DO NOT IMMERSE. USE ONLY ON SURFACES MOISTENED BY THE CLEANING PROCESS. USE ONLY BISSELL CLEANING PRODUCTS INTENDED FOR USE WITH THIS MACHINE.

 **WARNING**  
TO REDUCE THE RISK OF FIRE AND ELECTRIC SHOCK, ALWAYS INSTALL FLOAT BEFORE ANY WET PICK-UP OPERATION.

## SAVE THESE INSTRUCTIONS

**FOR OPERATION ON A 220-240 VOLT A.C. 50-60 HZ POWER SUPPLY ONLY.**

This model is for household use only.

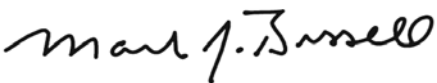
# Thanks for buying a BISSELL deep cleaner

We're glad you purchased a BISSELL deep cleaner. Everything we know about floor care went into the design and construction of this complete, high-tech home cleaning system.

Your BISSELL deep cleaner is well made, and we back it with a limited two-year guarantee. We also stand behind it with a knowledgeable, dedicated Consumer Care department, so, should you ever have a problem, you'll receive fast, considerate assistance.

My great-grandfather invented the floor sweeper in 1876. Today, BISSELL is a global leader in the design, manufacture, and service of high quality homecare products like your BISSELL deep cleaner.

Thanks again, from all of us at BISSELL.



Mark J. Bissell  
Chairman & CEO

Safety Instructions . . . . .	2
Product View . . . . .	4
Assembly . . . . .	5
Operations . . . . .	6-10
Maintenance & Care . . . . .	11-14
Troubleshooting . . . . .	15
Guarantee . . . . .	16
Consumer Care . . . . .	16

## TIPS

- » Deep cleaning stairs and high-traffic areas on a regular basis helps prolong carpet life.
- » Deep cleaning carpeting regularly can reduce dust and allergens in your home.

# Product View



- 1 Spray Trigger
- 2 Cleaning Tools  
(tools vary by model)
- 3 Upper Handle
- 4 Power Cord
- 5 Carry Handle
- 6 Ready Tools™ Dial

- 7 Removable Nozzle
- 8 DirtLifter™ PowerBrush
- 9 EdgeSweep™ Brushes
- 10 Belt Access Door  
(underside of machine)
- 11 Cord Clip
- 12 Quick Release™ Cord Wrap

- 13 Hose
- 14 Tank Carry Handle
- 15 Tank Latch
- 16 2-in-1 Water Tank
- 17 Power Pedal (red pedal)
- 18 Recline Pedal

# Assembly

Your deep cleaner comes in four easy-to-assemble components:

- Upper Handle with Screws**
- Lower Base**
- Upper Hose/Cord Rack**
- Lower Hose/Cord Rack**

The only tool you will need to assemble your cleaner is a Phillips head screwdriver.

1. Slide upper handle onto lower base and secure with two long screws into marked holes (screws will be taped to upper handle).
2. Attach upper hose/cord rack to back of the handle by guiding hook up into the slot location and pressing firmly upward until it is seated flush with back of machine. Secure 1 short screw through hole in the bottom of upper hose/cord rack.
3. Attach lower hose/cord rack by guiding the hook up into slot location and pressing firmly upward until it is seated flush with back of machine. Secure 2 short screws through holes on sides of the bottom hose/cord rack.
4. Wrap hose around lower and upper hose/cord racks and secure it by inserting trigger on hose grip into opening on hose grip holder located on upper hose/cord rack.

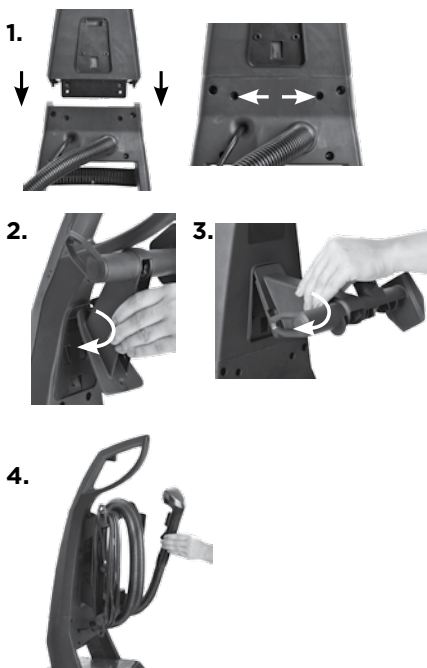
**NOTE: Make sure to wrap hose beginning from back of bottom hose/cord rack and then wrapping over and around top of upper hose/cord rack.**

5. Wrap cord around lower and upper hose/cord racks and secure plug to cord with clip on plug.
6. Attach cleaning tools as necessary to storage locations on front of cleaner, bottom hose/cord wrap and end of hose grip.

Deep cleaner assembly is now complete.

## **WARNING**

Do not plug in your deep cleaner until you have completely assembled it per the instructions and are familiar with all instructions and operating procedures.



# Operations

## Cleaning Fluid

Keep plenty of genuine BISSELL 2X\* formula on hand so you can clean whenever it fits your schedule. Always use genuine BISSELL deep cleaning formulas. Non-BISSELL cleaning solutions may harm the machine and may void the guarantee.

### **WARNING**

To reduce the risk of fire and electric shock due to internal component damage, use only BISSELL cleaning fluids intended for use with the deep cleaner.



650 mL Stain Pretreat  
**#1147E**



2X\* Wash & Protect PRO  
Professional Stain & Odour Formula  
w/ Scotchgard™ Protector  
**#78H6E**



2X\* Wash & Protect PET Pet  
Stain & Odour Formula w/  
Scotchgard™ Protector  
**#99K5E**



2X\* Wash & Protect Stain  
& Odour Formula w/  
Scotchgard™ Protector  
**#62E5E**



2X\* Wash & Remove Allergen  
Removal Formula  
**#89Q5E**



2X\* Wash & Refresh Blossom  
& Breeze Fragrance Formula w/  
Ambipur™ Freshness  
**#1248E**



2X\* Wash & Refresh  
Natural Orange Formula  
**#83P3E**

\*2X concentrated formula, 60 mL is equivalent to 120 mL of non-concentrated formula.

# Operations

## Special features

### Heatwave Technology™

This deep cleaner features Heatwave Technology that helps to maintain the temperature of the hand hot tap water you put in it to provide constant heat as you clean. The Heatwave Technology automatically turns on when you turn the machine on.

### Before you clean

1. Plan activities to give your carpet time to dry.
2. Move furniture to another area if cleaning an entire room (optional).
3. Vacuum area with a dry vacuum cleaner before deep cleaning.
4. Plan your cleaning route to leave an exit path. It is best to begin cleaning in the corner farthest from your exit.

### 5. Pretreating (optional)

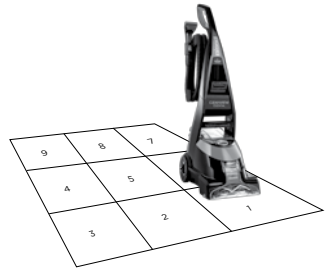
Pretreating is recommended to improve cleaning effectiveness for heavily soiled carpet in high traffic areas such as entry ways and hallways.

#### To pretreat:

- a. Using BISSELL Stain Pretreat (sold separately), generously spray evenly over soiled area, do not overwet.
- b. Wait 3-5 minutes before deep cleaning.
- c. Clean as normal using your BISSELL deep cleaner, following instructions in this guide.

## WARNING

To reduce the risk of fire, use only BISSELL deep cleaning formula for full size machines in your deep cleaner. Use of cleaning formulas that contain eucalyptus, lemon or pine oil may damage this appliance and void the guarantee. Chemical spot cleaners or solvent-based soil removers should not be used. These products may react with the plastic materials used in your deep cleaner causing cracking or pitting.



5a.



# Operations

## Filling the 2-in-1 water tank

1. Remove tank from base of machine by lifting tank carry handle. Carry like a bucket to the sink.
2. Pull upward on bottom edge of latch in the back of tank to unhook and remove lid.
3. Pull up on bladder fill cover that says "Fill Here". Fill the bladder with hand hot (60°C/140°F MAX) tap water. **Do not boil or microwave water as it can destroy the bladder.**
4. Using measuring cup provided, fill to indicated fill line on measuring cup and pour in to bladder.

**NOTE: Always use genuine BISSELL 2X formulas to maximize cleaning and for the safety of your machine.**

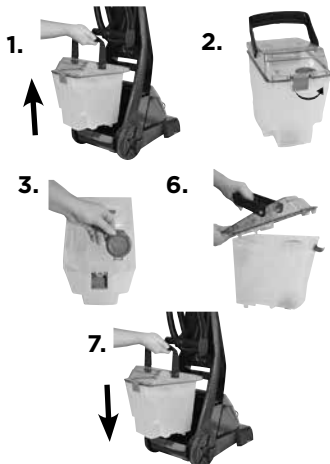
5. Push down on bladder fill cover to close.
6. Replace top lid back onto tank by matching lid and tank edges.

**NOTE: Remember to secure lid and test to make sure it is secure before picking up tank.**

7. Place tank into machine base, seating firmly in place.

## ⚠️ WARNING

To reduce the risk of fire and electric shock due to internal component damage, use only BISSELL cleaning fluids intended for use with the deep cleaner. Non-BISSELL cleaning solutions may harm the machine and may void the guarantee.



## Carpet cleaning

1. Plug into a proper outlet.
2. Set ReadyTools dial to Floor Cleaning setting.
3. Turn power on by pushing red power pedal on back of machine with your foot.
4. With your foot, push gray detent pedal located on back of machine next to red power pedal.
5. While pressing spray trigger, make one slow forward wet pass and another back. **Caution: do not overwet.**
6. Release spray trigger and make one slow forward and backward pass over same area.
7. Repeat cleaning passes until solution being suctioned up appears clean. Continue passes without pressing spray trigger until you can't see any more water being suctioned up. Repeated passes will help aid in dry time.

**NOTE: You may notice hair and debris deposits on the carpet or in the tank that were loosened by the cleaning action. This debris should be picked up and thrown away.**

## ⚠️ CAUTION

Take care not to run over loose objects or edges of area rugs. Stalling the brush may result in premature belt failure.

## ATTENTION

Some Berber carpets have a tendency to fuzz with wear. Repeated strokes in the same area with an ordinary vacuum or deep cleaner may aggravate this condition.



3. Power Pedal ① 4. Detent Pedal



# Operations

## Empty the 2-in-1 water tank/ clean removable nozzle

1. Push power pedal ① off. Remove 2-in-1 water tank from base using tank carry handle. Carry tank like a bucket to a utility sink or outside where you will dispose of dirty water.
2. Pull upward on bottom edge of latch in the back of tank to unhook and remove lid.
3. Empty dirty water from back corner of tank.
4. After each use, remove any debris trapped in red lint screen on base of machine while tank is still removed.
5. After each use, remove nozzle by grasping each side of top of nozzle and pulling forward. Clean nozzle by rinsing under running water.
6. When finished, replace nozzle by slightly raising front of machine to line up slots on each side of the base with hooks on each side of nozzle. Attach at base first and then push forward to click nozzle into place.

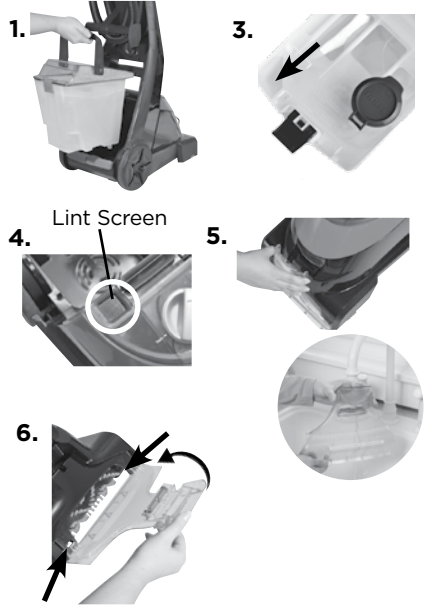
**NOTE: If nozzle is not attached properly, loss of suction will occur.**

7. To continue carpet cleaning, refer back to "Carpet cleaning" instructions on page 8.

If cleaning is complete, refer to "Maintenance and care" section starting on page 11.

## **WARNING**

To reduce the risk of electric shock, push power pedal ① off and disconnect plug from electrical outlet before performing maintenance or troubleshooting checks.



## Ready Tools™

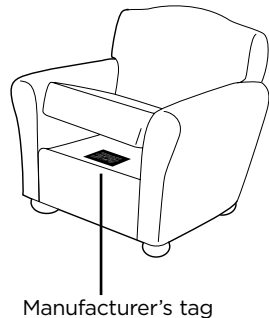
Your deep cleaner comes equipped with a hose and at least one cleaning tool for cleaning stairs, upholstery, and more.

**Important! If using to clean upholstery, check upholstery tags.**

1. Check manufacturer's tag before cleaning. "W" or "WS" on the tag means you can use your deep cleaner. If tag is coded with "X" or "S" (with a diagonal strike through), or says "Dry Clean Only," do not proceed with any deep cleaning machine. Do not use on velvet or silk. If manufacturer's tag is missing or not coded, check with your furniture dealer.
2. Check for colourfastness in an inconspicuous place.
3. If possible, check upholstery stuffing. Coloured stuffing may bleed through fabric when wet.
4. Plan activities to give upholstery time to dry.
5. Vacuum thoroughly to pick up loose debris and pet hair. Use a vacuum with a brush attachment and a crevice tool to clean in fabric folds and tufts.

## **IMPORTANT**

Check for colourfastness in an inconspicuous place. If possible, check upholstery stuffing. Coloured stuffing may bleed through fabric when it becomes wet.



# Operations

- To begin cleaning with attachments, follow instructions on page 8 for filling 2-in-1 water tank.
- Set ReadyTools dial to TOOLS setting. This will allow spray and suction from hose.
- Attach cleaning tool of your choice to end of hose. If using a Tough Stain Deep Reach Tool, follow directions below.
- Hold tool approximately 2.5 cm above soiled surface. Press spray trigger to apply cleaning solution to soiled area. Using brush on tool, gently scrub area to be cleaned. Release spray trigger, apply downward pressure on tool and pull it toward you to suction up dirt and cleaning solution. Continue until no more dirt can be removed. **Caution: Do Not Overwet.**
- When finished cleaning, remove and rinse tool(s) in clean, running water.
- It is recommended that you suction clean water from the tap to rinse out the hose. Be careful not to over-fill your tank.
- Before wrapping hose onto rack, lift end of hose and stretch to ensure all water is cleared from hose.
- Wrap hose around rack.
- Empty 2-in-1 water tank and rinse out, following instructions on page 9.
- If ReadyTools dial becomes difficult to turn, the diverter assembly that holds dial may need to be cleaned. To clean, first remove nozzle and locate screw that holds diverter assembly in place. With a Phillips screwdriver, remove the screw and set aside.
- Remove diverter assembly; hold under running water making sure water flows through and around dial. Turn dial about 10 times clockwise and 10 more times counter clockwise to free up debris.
- Wipe diverter assembly with a soft cloth and place back on machine. Replace nozzle.
- Return ReadyTools dial to FLOOR CLEANING.

7.



11.



12.



15.



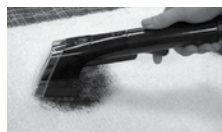
16.



## Cleaning with Tough Stain Deep Reach Tool

- Set tool on soiled surfaces and press spray trigger to spray solution onto soiled area to be cleaned.
- Slowly move tool back and forth over soiled surface, keeping tool in contact with carpet.
- Release spray trigger and move tool slowly over soiled area to suction up water and dirt.
- Continue to clean the area, working in small sections, until no more dirt can be removed.
- The front nozzle of the Pet Stain Tool can be removed for easy cleaning. Push the button at the top of the cleaning tool and slide the front nozzle off the top of the cleaning tool. Rinse the front nozzle and the tool with clean water and replace front nozzle back onto the tool.

1.



3.



5.



# Maintenance & Care

## Machine care

For best results, a few simple steps can assure your machine is well maintained after cleaning is complete.

**1.** Flush your machine of any remaining residual solution.

**a.** Fill 2-in-1 water tank with clean hand hot (60°C/140°F MAX) tap water and place back on machine.

**b.** Push power pedal on and fully recline handle. Press spray trigger for 15 seconds while making forward and backward passes on the carpet. Release spray trigger and make forward and backward passes for another 15 seconds or until there is no more water being suctioned up from carpet.

**2.** Push power pedal **⓪** off. Unplug machine and wrap power cord.

**3.** After emptying 2-in-1 water tank, rinse it with running hand hot (60°C/140°F MAX) tap water, taking care to clean underneath and around heavy duty bladder. Clean out red lint screen prior to replacing tank. Removable nozzle may be rinsed if necessary.

**4.** Replace 2-in-1 water tank on machine.

**5.** Any loose hair or debris can be pulled from brush roll and thrown away. See instructions on page 13 on removing brush roll.

**6.** Clean the ReadyTools dial assembly area by following the instructions in Step 15 and 16 on page 10.

**7.** To clean attachments, remove from hose and rinse under clean, running water. Dry before storing. Clean hose by suctioning clean water from tap (taking care not to let tank overflow). Before wrapping back on machine, lift end of hose and stretch out to ensure all water is cleared from hose. Refer to page 10, illustrations 11 and 12.

**8.** Wipe machine's exterior with a soft cloth.

**9.** After carpet is dry, you may wish to vacuum again to remove any leftover hair and fuzz the deep cleaner may have brought to the carpet surface.

## **WARNING**

To reduce the risk of electric shock, push power pedal **⓪** off and disconnect plug from electrical outlet before performing maintenance or troubleshooting checks.

## Tip


» Let all parts dry completely before storing

# Maintenance & Care

## **Machine storage**

Put unit away in a closet or basement for next use. Store cleaner in a protected, dry area. Since this product uses water, it must not be stored where there is a danger of freezing. Freezing will damage internal components and void guarantee.

### **WARNING**

To reduce the risk of electric shock, push power button  off and disconnect plug from electrical outlet before performing maintenance or troubleshooting checks.

### **CAUTION**

Do not store unit where freezing may occur. Damage to internal components may result.

# Maintenance & Care

## Brush belt and brush removal & replacement

Occasional replacement of the brush belt or brush may become necessary. If needed, please follow instructions below.

1. Turn off machine and unplug it from outlet. Wrap hose and cord on racks.

2. Remove 2-in-1 water tank and set aside.

3. **IMPORTANT: Fully recline handle and turn unit upside down.**

4. Locate guard wire and remove screw.

**NOTE: Guard wire does not remove.**

5. Locate red belt access door and remove two screws.

**NOTE: The dark screw is a long machine screw and will take approximately 25 full turns to completely remove. The head of the screw will lift from the belt access door so that it can be easily removed.**

6. Remove belt access door assembly from end of brush and set aside.

7. Remove brush belt. If worn or damaged, replace with new brush belt.

8. If necessary, the brush roll can be removed for cleaning or replacement. To remove, rotate the brush out of brush housing and pull brush off axle attached to remaining end cap. The remaining pivot arm can be removed by removing the screw (this will allow for full access to brush chamber for cleaning). Make sure "keyed" end of metal rod is aligned with slot in pivot arm before re-assembling. Replace brush on axle, cogged-side, last. You may need to rotate brush to allow it to slide all the way down the axle.

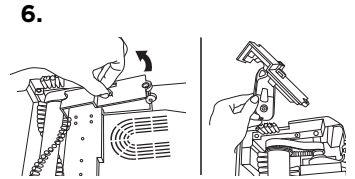
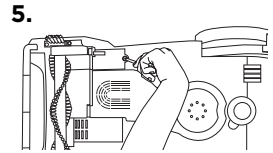
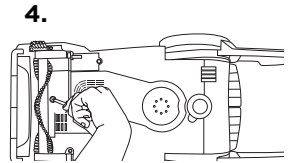
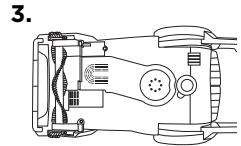
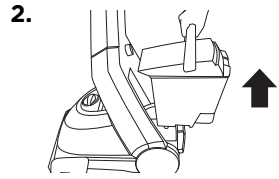
9. Reattach brush belt by installing onto toothed pump pulley and then onto toothed end of brush.

10. Reattach belt access door assembly to end of brush and rotate back into place. Replace screws.

11. Replace screw on guard wire.

**NOTE: Do not over tighten screws.**

If you have any questions or are having trouble removing, replacing or reinstalling your brush belt or brush, please call BISSELL Consumer Care.



# Maintenance & Care

## Pump belt removal & replacement

Occasional replacement of the pump belt may become necessary. If needed, please follow instructions below.

1. Turn off machine and unplug it from outlet. Wrap hose and cord on racks.

2. Remove 2-in-1 water tanks and set aside.

3. **IMPORTANT: Fully recline handle and turn unit upside down.**

4. Locate guard wire and remove screw.

**NOTE: Guard wire does not remove.**

5. Locate red belt access door and remove two screws.

**NOTE: The dark screw is a long machine screw and will take approximately 25 full turns to completely remove. The head of the screw will lift from the belt access door so that it can be easily removed.**

6. Remove belt access door assembly from end of brush and set aside.

7. Remove brush belt from end of brush and set aside. If worn or damaged, replace with new brush belt.

8. Remove pump belt and replace it with a new belt by pinching belt at one end to make a large loop. Attach belt to silver motor shaft first and then pull towards larger, red pulley. Attach belt to red pulley.

**NOTE: Spinning the red pulley a few times will help center belt and ensure correct assembly.**

9. Reattach brush belt by installing onto toothed pump pulley and then onto toothed end of brush.

10. Reattach belt access door assembly to end of brush and rotate back into place. Replace screws.

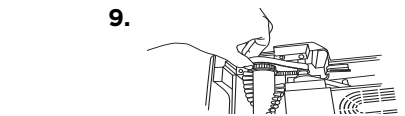
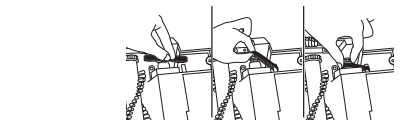
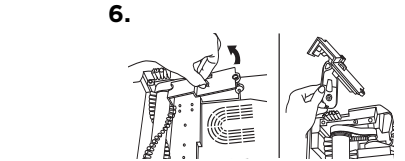
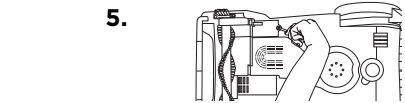
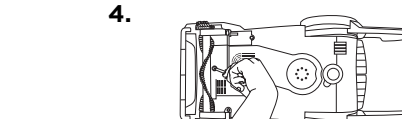
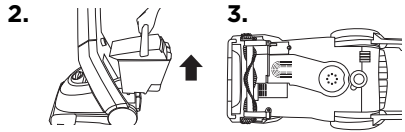
11. Replace screw on guard wire.

**NOTE: Do not over tighten screws.**

If you have any questions or are having trouble removing, replacing or reinstalling your brush belt, please call BISSELL Consumer Care.


## WARNING


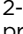


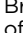
To reduce the risk of electric shock, push power button  
Ⓛ off and disconnect plug from electrical outlet before performing maintenance or troubleshooting checks.



# Troubleshooting

## **WARNING**

To reduce the risk of electric shock, push power button  off and disconnect plug from electrical outlet before performing maintenance or troubleshooting checks.

<b>Problem</b>	<b>Possible causes</b>	<b>Remedies</b>
<b>Reduced spray OR no spray</b>	Bladder may be empty.	Push power pedal  off; refill bladder with clean hand hot (60°F/140°C MAX) tap water and formula.
	2-in-1 tank may not be seated properly.	Push power pedal  off; remove tank and reseal tank.
	Pump may have lost prime.	Push power pedal  off; after 1 minute turn on and press spray trigger.
	Pump belt may be broken.	Push power pedal  off and unplug from outlet. Follow belt replacement instructions on page 14.
<b>DirtLifter PowerBrush does not turn</b>	Brush belt or pump belt is off or broken.	Push power pedal  off and unplug from outlet. Follow belt replacement instructions on pages 13 and 14.
<b>Cleaner not picking up solution</b>	ReadyTools dial may be on wrong setting for cleaning job.	Set ReadyTools dial to either floor cleaning or tools.
	Poor tool position. (Hand held attachments only).	Adjust angle; apply more downward pressure.
	Removable nozzle may not be properly attached.	Make sure nozzle is on correctly by slightly raising front of machine to line up slots on each side of base of machine with hooks on each side of nozzle. Attach at base first and then click nozzle into place. Refer to image 6 on page 9.
	2-in-1 tank lid is not properly installed.	Re-install lid; refer to images on page 9.
	2-in-1 tank is not properly seated.	2-in-1 tank must be firmly seated to function; remove and reseal 2-in-1 tank.
	2-in-1 tank has picked up maximum dirty water.	Empty 2-in-1 tank and refill, refer to the Operation section.
	The lint screen may be clogged.	Clean out lint screen, refer to page 9.

**Please do not return this product to the store.**

Other maintenance or service not included in the manual should be performed by an authorized service representative.

Thank you for selecting a BISSELL product.

# Consumer Guarantee

This guarantee gives you specific legal rights, in addition to rights you may have under the Australian consumer law. If you need additional instruction regarding this guarantee or have questions regarding what it may cover, please contact your local BISSELL consumer services on the details set out below.

## Limited 2 Year Guarantee from the date of purchase by original purchaser

Subject to the \*conditions identified below, BISSELL will repair or replace (with new or remanufactured components or products), at BISSELL's option, free of charge, any defective or malfunctioning part due to manufacturer defect. This guarantee applies to product used for personal purposes, and not commercial or rental service. This guarantee does not apply to fans or routine maintenance or consumable components such as filters, belts, brush rolls, etc., damage or malfunction caused by negligence, abuse, neglect, unauthorized repair, or any other use not in accordance with the user's guide. BISSELL recommends that the original packaging be kept for the duration of the guarantee period in case such need arises within the guarantee period that the item needs re-packing and transportation.

### \*CONDITIONS OF GUARANTEE

Subject to whether such loss is reasonably foreseeable, BISSELL and its in-country distributors are not liable for incidental or consequential damages of any nature associated with the use of this product.

### FOR AUSTRALIAN CONSUMERS ONLY:

OUR GOODS COME WITH GUARANTEES THAT CANNOT BE EXCLUDED UNDER THE AUSTRALIAN CONSUMER LAW. YOU ARE ENTITLED TO A REPLACEMENT OR REFUND FOR A MAJOR FAILURE AND FOR COMPENSATION FOR ANY OTHER REASONABLY FORESEEABLE LOSS OR DAMAGE. YOU ARE ALSO ENTITLED TO HAVE THE GOODS REPAIRED OR REPLACED IF THE GOODS FAIL TO BE OF ACCEPTABLE QUALITY AND THE FAILURE DOES NOT AMOUNT TO A MAJOR FAILURE.

THIS GUARANTEE IS IN ADDITION TO OTHER RIGHTS OR REMEDIES UNDER LAW. NOTHING IN THIS GUARANTEE EXCLUDES, LIMITS OR MODIFIES ANY LIABILITY OF BISSELL WHICH IS IMPOSED BY LAW, OR LIMITS OR MODIFIES ANY REMEDY AVAILABLE TO THE CONSUMER WHICH IS GRANTED BY LAW. TO MAKE A CLAIM UNDER THIS GUARANTEE CONTACT BISSELL AUSTRALIA PTY LTD (DETAILS ABOVE). CONTACT BISSELL PRIOR TO RETURNING ANY GOODS. WHERE AGREED, BISSELL WILL REIMBURSE REASONABLE POSTAGE / HANDLING COSTS (IF ANY) FOR RETURNING GOODS TO BISSELL. TO CLAIM EXPENSES INCURRED IN MAKING A CLAIM UNDER THIS GUARANTEE PLEASE PROVIDE BISSELL WITH A COPY OF THE RECEIPT OF THE EXPENSES BY EMAIL OR POST.

## Consumer Care

**If your BISSELL product should require service or to claim under our limited guarantee, please contact us as follows:**

### Website:

[www.BISSELL.com](http://www.BISSELL.com)

### Email:

[consumercare@bissell.com](mailto:consumercare@bissell.com)

### Write:

BISSELL AUSTRALIA PTY LIMITED  
42 Rocco Dr.  
Scoresby 3179  
Victoria  
Australia

### Telephone:

Australia: 1300-247-735  
New Zealand: 0800-247-735

**Replacement parts and accessories are available for purchase. To purchase visit [www.BISSELL.com](http://www.BISSELL.com)**

## Visit the BISSELL website: [www.BISSELL.com](http://www.BISSELL.com)

When contacting BISSELL, have model number of cleaner available.

Please record your Model Number: \_\_\_\_\_ Please record your Purchase Date: \_\_\_\_\_

**NOTE: Please keep your original sales receipt. It provides proof of the date of purchase in the event of a Guarantee claim. See Guarantee for details.**



©2017 BISSELL Homecare, Inc  
Grand Rapids, Michigan  
All rights reserved. Printed in China  
Part Number 161-0452 01/17 RevA  
Visit our website at: [www.BISSELL.com](http://www.BISSELL.com)

Ambipur is a trademark of The Proctor & Gamble Company, Cincinnati, Ohio used under license by BISSELL Homecare, Inc.