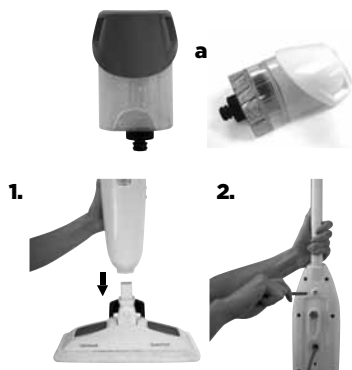
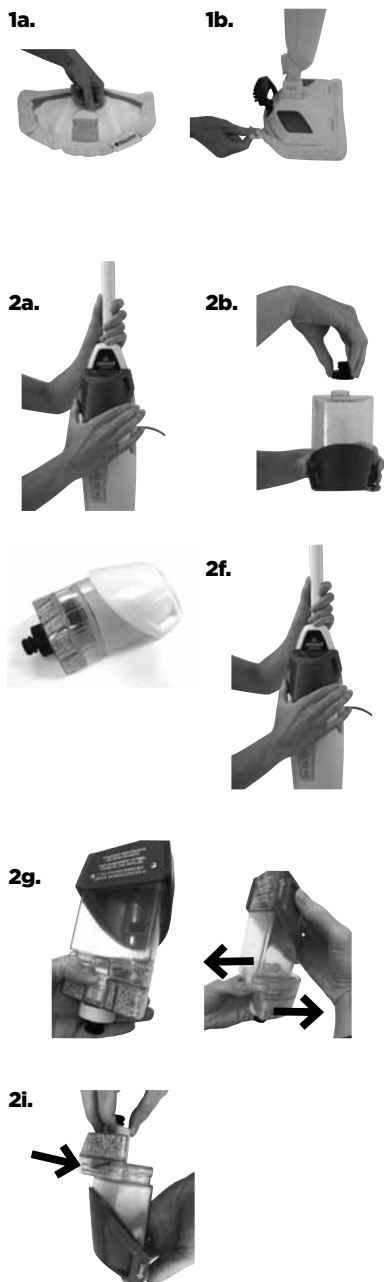


POWERFRESH™
1440



A**B****C**

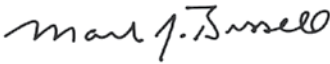
Thanks for buying a BISSELL steam mop

We're glad you purchased a BISSELL steam mop. Everything we know about floor care went into the design and construction of this complete, high-tech home cleaning system.

Your BISSELL steam mop is well made, and we back it with a limited two-year guarantee. We also stand behind it with a knowledgeable, dedicated Consumer Care department, so, should you ever have a problem, you'll receive fast, considerate assistance.





My great-grandfather invented the floor sweeper in 1876. Today, BISSELL is a global leader in the design, manufacture, and service of high-quality homecare products like your BISSELL steam mop.

Thanks again, from all of us at BISSELL.



Mark J. Bissell
Chairman & CEO

Symbol Definitions

	WARNING	RISK OF FIRE, ELECTRIC SHOCK, OR INJURY
	STEAM	DANGER OF SCALDING
	GUIDE	READ USER GUIDE FOR COMPLETE SAFETY AND USER INSTRUCTIONS
	WEEE	DO NOT THROW THE APPLIANCE AWAY WITH THE NORMAL HOUSEHOLD WASTE AT THE END OF ITS LIFE, BUT HAND IT IN AT AN OFFICIAL COLLECTION POINT FOR RECYCLING. BY DOING THIS YOU WILL HELP TO PRESERVE THE ENVIRONMENT.



More than 7 million Australians suffer from asthma and allergies. The Sensitive Choice program has been developed by the National Asthma Council Australia to help Australians and New Zealanders make better lifestyle choices that may help manage asthma and allergies more effectively.

The BISSELL range of steam mops, deep carpet cleaners and deep carpet cleaning formulas has been approved by the National Asthma Council Australia's Sensitive Choice program, and carries the Sensitive

Choice butterfly logo. The Sensitive Choice blue butterfly symbol is a way of recognising products and services that support asthma and allergy care. Products that carry the blue butterfly may be better choices for people with asthma and allergies.

To learn more about managing asthma and allergies, visit the Sensitive Choice website at:

www.sensitivechoice.com.au

IMPORTANT SAFETY INSTRUCTIONS

READ ALL INSTRUCTIONS BEFORE USING YOUR STEAM MOP.

When using an electrical appliance, basic precautions should be observed, including the following.



WARNING

ALWAYS CONNECT TO A PROPERLY EARTHED ELECTRICAL SOCKET.



WARNING

TO REDUCE THE RISK OF FIRE, ELECTRIC SHOCK, OR INJURY:

- » Do not leave appliance when plugged in.
- » Unplug from electrical socket when not in use and before servicing.
- » Do not modify earthed plug.
- » Use indoors only.
- » Children should be supervised to ensure that they do not play with the appliance.
- » Not intended for use by persons (including children) with reduced physical, sensory or mental capabilities, or lack of experience and knowledge, unless they have been given supervision or instruction concerning use of the appliance by a person responsible for their safety.
- » Use only as described in this user guide.
- » Use only manufacturer's recommended attachments.
- » Do not use with damaged cable or plug.
- » If supply cable is damaged, it must be replaced by the manufacturer or its service agent in order to avoid a hazard.
- » Do not immerse in water or liquid.

- » If appliance is not working as it should, has been dropped, damaged, left outdoors, or dropped into water; do not attempt to operate it and return it to a service center.
- » Liquid or steam must not be directed towards equipment containing electrical components.
- » Do not pull or carry by cable, use cable as a handle, close door on cable, or pull cable around sharp edges or corners.
- » Do not run appliance over cable.
- » Keep cable away from heated surfaces.
- » Do not unplug by pulling on cable.
- » To unplug, grasp the plug, not the cable.
- » Do not handle plug or appliance with wet hands.
- » Do not put any object into openings.
- » Do not use with any opening blocked; keep free of dust, lint, hair, and anything that may reduce air flow.
- » Keep hair, loose clothing, fingers, and all parts of body away from openings and moving parts.
- » Turn off all controls before unplugging.
- » Use extra care when cleaning on stairs.
- » Do not use to pick up flammable or combustible liquids, such as petrol, or use in areas where they may be present.
- » Do not pick up toxic material (chlorine bleach, ammonia, drain cleaner, etc.)
- » Do not use appliance in an enclosed space filled with vapours given off by oil base paint, paint thinner, some mothproofing substances, flammable dust, or other explosive or toxic vapours.
- » Do not pick up hard or sharp objects such as glass, nails, screws, coins, etc.
- » Keep appliance on a level surface.



WARNING

SURFACE MAY BE HOT. AVOID CONTACT.



THIS SYMBOL MEANS WARNING: DANGER OF SCALDING

FOR OPERATION ON A 220-240 VOLT A.C. 50/60 HZ POWER SUPPLY ONLY.

This model is for household use only.

SAVE THESE INSTRUCTIONS FOR FUTURE USE

A Product View



Do not plug in your steam mop until you are familiar with all instructions and operating procedures.

- | | |
|------------------------------|------------------------------|
| 1 Steam-on-Demand Trigger | Pads with Microban® |
| 2 Strain Reliever Handle™ | Antibacterial Product |
| 3 Quick Release™ Cable Wrap | Protection (2-pack) |
| 4 Removable Water Tank | 11 Carpet Refresher |
| 5 Lower Cable Wrap | Attachment |
| 6 Smart Set™ Steam Control | 12 Spring Breeze Fragrance |
| 7 Manoeuvrable Swivel | Discs Replacement Pack |
| 8 Removable & Washable | (2-pack) |
| EasyScrubber™ | 13 Water Filter Replacement |
| 9 Low Profile, Edge-Cleaning | 14 Removable Water Tank With |
| Mop Head | Replaceable Water Filter |
| 10 Washable Microfiber Mop | |

B Assembly

Your PowerFresh™ Steam Mop assembles quickly and easily. It is packaged with the following items:

Handle Assembly with one screw

Lower Body

Manoeuvrable Mop Head

Removable Water Tank (Comes With Replaceable Water Filter on Select Models) (A)

The water tank is located on the top of the PowerFresh™ Steam Mop. It can be refilled with water any time during use. Distilled or demineralized water is recommended. On select models, this tank is connected to a removable, replaceable water filter that prolongs the life of your steam mop by filtering out tap water minerals.

Removable Easy Scrubber (Attached to Mop Head)

Clean sticky messes by pressing the Easy Scrubber with your foot and locking it into position. Clean grout and crevices with this tool.

2 - PowerFresh™ Microfibre Mop Pads with Microban® Antibacterial Protection

Reusable microfibre mop pads are machine washable and safe for virtually all hard floor surfaces. Your PowerFresh may have come with two different pads. The white microfibre pad is best for everyday use on delicate flooring like sealed hardwoods and laminate. The gray and white striped pad can be used for scrubbing heavily soiled floors and cleaning tougher messes. These steam mop pads contain built-in Microban® antibacterial protection that helps prevent the growth of 99.9% of harmful bacteria on the pad surface



Do not use chemicals in the water tank of your PowerFresh Steam Mop.

to help keep your pads fresher and cleaner between uses.

2 - Spring Breeze Fragrance Discs

1. Attach lower body to mop head by snapping it into place.
 2. Slide handle assembly down and screw until tightened.
- PowerFresh Steam Mop assembly is complete.

C Operations

Getting ready

The mop pad may have already come attached to the mop head, if not follow steps 1A and 1B below.

1. Add Freshening Disc and Attach Mop Pad

- a. Insert Spring Breeze Freshening Disc into pocket inside mop pad. Use the whole disc for a refreshing scent or cut in half for a lighter scent.
- b. Set mop head in mop pad, making sure quick-grip release tab is located on the back.

2. Fill the water tank

For tank without filter

- a. Remove tank by lifting straight up and away from unit.
- b. Unscrew cap at bottom of water tank.
- c. Fill water tank with water. For best results, water should be at room temperature.
- d. Replace the cap, tighten until snug.
- e. Replace water tank by gently sliding tank into place and press down firmly.

For tank with filter

- f. Remove tank by lifting straight up and away from unit.
- g. Press down on the Filter Release Button and slide filter forward to access Water Tank.
- h. Fill tank with water. For best results, water should be at room temperature.
- i. Slide Filter back onto the Water Tank until it clicks into place.
- j. Replace water tank by gently sliding tank into place and press down firmly.

3. Twist the Quick Release™ cable wrap clockwise to unwrap the power cable completely and plug into a 220-240 Volt electrical socket as described on the Important Safety Instructions, page 3.

4. SmartSet™ Steam Select Indicator light will glow when PowerFresh Steam Mop is ready to use. Press the Steam Level button to choose the level of steam you desire. Depress the Steam-on-Demand trigger located on the handle to begin steam cleaning.

Before you clean

Thoroughly sweep or vacuum floor prior to cleaning with the PowerFresh™ Steam Mop.

Cleaning hard floors

Your PowerFresh™ Steam Mop is designed to clean hard flooring such as ceramic tile, vinyl, laminate, marble, stone and sealed hard wood floors. Use of your PowerFresh Steam Mop on waxed or some unwaxed floors may result in a diminished glossiness. The PowerFresh Steam Mop is not for use on unsealed wood floors. For best results test in an inconspicuous area and check the care instructions from your flooring manufacturer.

1. Plug the unit in and wait 30 seconds for it to heat up. Choose the level of steam to clean your floor: Low (delicate floors), Medium (regular cleaning), High (durable floors or sticky messes). Begin cleaning by slowly passing the unit over the floor surface.
2. To sanitise an area of your floor, (attack invisible germs and bacteria) place the PowerFresh Steam Mop over the spot for a minimum 15 seconds using continuous steam, but no longer than 20 seconds using continuous steam. For larger areas, overlap swivel head placement.
3. To thoroughly clean dried-on sticky spots place the scrubby pad on the steam mop. Then press and lock the Easy Scrubber brush into place and slowly move the brush over the sticky spot to remove.
4. When the PowerFresh™ Steam Mop stops emitting steam, unplug the unit. Simply remove the water tank, refill, and continue cleaning.

Carpet Refresher Attachment

This accessory is recommended for the refreshing of carpets. Once the steam mop is cradled in the carpet refresher attachment, it will easily glide over the carpet.

NOTE: Always be sure a mop pad is in place before placing in carpet refresher attachment. Only white mop pads should be used with the carpet attachment. Do not use carpet attachment on spots or stains, or glide it over the same spot for no longer than 20 seconds.

1. Place the swivel mop head, with mop pad attached, in the carpet refresher attachment.

NOTE: The PowerFresh™ Steam Mop rests in the carpet refresher attachment and may not stay attached to the swivel mop head. It is meant to glide over the carpet.

2. Fill water tank with water. Begin refreshing your carpet or rug by depressing the Steam-on-Demand trigger while pushing the PowerFresh™ Steam Mop in a forward and backward motion, releasing steam as you go.

3. When you have finished refreshing your carpet or rug, unplug the steam mop and remove from the carpet or rug.

NOTE: Move the PowerFresh™ Steam Mop and carpet refresher attachment in a continuous motion until you are finished. This product is not intended to be used as a carpet cleaner, only a carpet refresher or deodorizer. Never attempt to use the PowerFresh™ Steam Mop on carpet without the carpet refresher attachment in place. DO NOT leave the mop in a stationary position.

Maintenance & Care

When you're done

1. Unplug power cable from electrical socket.
2. Carefully remove the mop pad using the Quick Release™ tab from the mop head. The mop pad and lower assembly may be hot. Remove Spring Breeze Freshening Disc from mop pad.
3. Any water remaining in the water tank should be emptied prior to machine storage.
4. Mop pad can be machine washed in warm water. Use only liquid detergents. Do not use fabric softeners or bleach. For best results, air dry.
5. Wrap power cable around quick release cable wrap on back of PowerFresh™ Steam Mop.
6. Wipe all surfaces of PowerFresh™ Steam Mop with a soft cloth. Store upright in a protected, dry area.



Exercise extreme care when using the Steam Mop on timber flooring. Ensure the Steam mop is thoroughly tested in an inconspicuous area prior to mopping a large floor area. The Steam Mop generates hot steam, so when depressing the trigger to apply steam, ensure the Steam Mop is moving continuously. The trigger does not need to be depressed at all times. Prolonged application of steam in one area increases the risk of damage to the surface treatment on timber floors. Check with your timber floor treatment application specialist prior to Steam Mop operation. Regular foot traffic and direct sunlight will wear down timber floor surface treatment making it more susceptible to extreme care when using the Steam Mop on timber flooring.



Never put descaling aromatic, alcoholic, or detergent products into the steam cleaner, as this may damage it or make it unsafe for use.

Tinted plates on foot may get hot while steam mop is in use. Do not touch while hot.

Upright storage of the PowerFresh Steam Mop with a wet mop pad may result in the formation of white marks on your floor. To remove the white marks, clean area with vinegar.

Consumer Guarantee

This Guarantee only applies outside of the USA and Canada. It is provided by BISSELL International Trading Company BV ("BISSELL").

This Guarantee is provided by BISSELL. It gives you specific rights. It is offered as an additional benefit to your rights under law. You also have other rights under law which may vary from country to country. You can find out about your legal rights and remedies by contacting your local consumer advice service. Nothing in this Guarantee will replace or lessen any of your legal rights or remedies. If you need additional instruction regarding this Guarantee or have questions regarding what it may cover, please contact BISSELL Consumer Care or contact your local distributor.

This Guarantee is given to the original purchaser of the product from new and is not transferable. You must be able to evidence the date of purchase in order to claim under this Guarantee.

Limited Two-Year Guarantee

Subject to the *EXCEPTIONS AND EXCLUSIONS identified below, BISSELL will for two years from the date of purchase by the original purchaser repair or replace (with new or remanufactured components or products), at BISSELL's option, free of charge, any defective or malfunctioning part or product.

BISSELL recommends that the original packaging and evidence of the date of purchase be kept for the duration of the Guarantee period in case the need arises within the period to claim on the Guarantee. Keeping the original packaging will assist with any necessary re-packaging and transportation but is not a condition of the Guarantee.

If for your product is replaced by BISSELL under this Guarantee, the new item will benefit from the remainder of the term of this Guarantee (calculated from the date of the original purchase). The period of this Guarantee shall not be extended whether or not your product is repaired or replaced.

*EXCEPTIONS AND EXCLUSIONS FROM THE TERMS OF THE GUARANTEE

This Guarantee applies to products used for personal domestic use and not commercial or hire purposes. Consumable components such as filters, belts and mop pads, which must be replaced or serviced by the user from time to time, are not covered by this Guarantee.

This Guarantee does not apply to any defect arising from fair wear and tear. Damage or malfunction caused by the user or any third party whether as a result of accident, negligence, abuse, neglect, or any other use not in accordance with the User Guide is not covered by this Guarantee.

An unauthorised repair (or attempted repair) will void this Guarantee whether or not damage has been caused by that repair/attempt.

Removing or tampering with the Product Rating Label on the product or rendering it illegible will void this Guarantee.

SAVE AS SET OUT BELOW BISSELL AND ITS DISTRIBUTORS ARE NOT LIABLE FOR ANY LOSS OR DAMAGE THAT IS NOT FORESEEABLE OR FOR INCIDENTAL OR CONSEQUENTIAL DAMAGES OF ANY NATURE ASSOCIATED WITH THE USE OF THIS PRODUCT INCLUDING WITHOUT LIMITATION LOSS OF PROFIT, LOSS OF BUSINESS, BUSINESS INTERRUPTION, LOSS OF OPPORTUNITY, DISTRESS, INCONVENIENCE OR DISAPPOINTMENT. SAVE AS SET OUT BELOW BISSELL'S

LIABILITY WILL NOT EXCEED THE PURCHASE PRICE OF THE PRODUCT.

BISSELL does not exclude or limit in any way its liability for (a) death or personal injury caused by our negligence or the negligence of our employees, agents or subcontractors; (b) fraud or fraudulent misrepresentation; (c) or for any other matter which cannot be excluded or limited under law.

FOR AUSTRALIAN CONSUMERS ONLY:

Our goods come with guarantees that cannot be excluded under the Australian Consumer Law. You are entitled to a replacement or refund for a major failure and for compensation for any other reasonably foreseeable loss or damage. You are also entitled to have the goods repaired or replaced if the goods fail to be of acceptable quality and the failure does not amount to a major failure.

THIS WARRANTY IS IN ADDITION TO OTHER RIGHTS OR REMEDIES UNDER LAW. NOTHING IN THIS WARRANTY EXCLUDES, LIMITS OR MODIFIES ANY LIABILITY OF BISSELL WHICH IS IMPOSED BY LAW, OR LIMITS OR MODIFIES ANY REMEDY AVAILABLE TO THE CONSUMER WHICH IS GRANTED BY LAW. TO MAKE A CLAIM UNDER THIS WARRANTY CONTACT BISSELL AUSTRALIA PTY LTD (DETAILS ABOVE). CONTACT BISSELL PRIOR TO RETURNING ANY GOODS. WHERE AGREED, BISSELL WILL REIMBURSE REASONABLE POSTAGE / HANDLING COSTS (IF ANY) FOR RETURNING GOODS TO BISSELL.

Consumer Care

If your BISSELL product should require service or to claim under our Limited Two-Year Guarantee, please visit:

Website or E-mail:

www.BISSELL.com

For Australian inquiries:

Monday - Friday 9am - 5pm

BISSELL AUSTRALIA PTY LIMITED

42 Rocco Dr.

Scoresby 3179

Victoria

Australia

Telephone: 1-800-811-183

For New Zealand inquiries:

Monday - Friday 9 am - 5 pm

Parex Industries Ltd.

5 Tolich Place

Henderson 0610

Auckland

New Zealand

Telephone: 0800-247-735

Replacement parts and accessories are available for purchase. To purchase visit www.BISSELL.com

Visit the BISSELL website: www.BISSELL.com

When contacting BISSELL, have model number of cleaner available.

Please record your Model Number: _____ Please record your Purchase Date: _____

NOTE: Please keep your original sales receipt. It provides proof of the date of purchase in the event of a Guarantee claim. See Guarantee for details.



©2015 BISSELL Homecare, Inc
Grand Rapids, Michigan
All rights reserved. Printed in China
Part Number 120-4572 Rev 01/13
Visit our website at: www.BISSELL.com
MICROBAN is a registered trademark of Microban Products Company.

