


POWERCLEAN™ PET  **USER GUIDE**

MODEL 1285K

IMPORTANT SAFETY INSTRUCTIONS

READ ALL INSTRUCTIONS BEFORE USING YOUR DEEP CLEANER.

When using an electrical appliance, basic precautions should be observed, including the following.

WARNING

ALWAYS CONNECT TO A PROPERLY EARTHED ELECTRICAL SOCKET.

WARNING

TO REDUCE THE RISK OF FIRE, ELECTRIC SHOCK, OR INJURY:

- » Unplug from electrical socket when not in use and before servicing.
- » This appliance can be used by children aged from 8 years and above and persons with reduced physical, sensory or mental capabilities or lack of experience and knowledge if they have been given supervision or instruction concerning use of the appliance in a safe way and understand the hazards involved. Cleaning and user maintenance shall not be made by children without supervision.
- » Children should be supervised to ensure that they do not play with the appliance.
- » If the supply cable is damaged, it must be replaced by the manufacturer, its service agent or similarly qualified persons in order to avoid a hazard.

WARNING

TO REDUCE THE RISK OF FIRE AND ELECTRIC SHOCK-USE ONLY BISSELL CLEANING PRODUCTS INTENDED FOR USE WITH THIS MACHINE. DO NOT EXPOSE TO RAIN. STORE INDOORS.

- » Do not leave appliance when plugged in.
- » Do not modify earthed plug.
- » Do not allow to be used as a toy.
- » Use only as described in the user guide.
- » Use only manufacturer's recommended attachments.
- » Do not use with damaged cable or plug.
- » Do not immerse in water or liquid.
- » If appliance is not working as it should, has been dropped, damaged, left outdoors, or dropped into water; do not attempt to operate it and have it repaired at an authorized service center.
- » Liquid or steam must not be directed towards equipment containing electrical components.
- » Do not pull or carry by cable, use cable as a handle, close door on cable, or pull cable around sharp edges or corners.
- » Do not run appliance over cable.
- » Keep cable away from heated surfaces.
- » Do not unplug by pulling on cable.
- » To unplug, grasp the plug, not the cable.
- » Do not handle plug or appliance with wet hands.
- » Do not put any object into openings.
- » Do not use with any opening blocked; keep free of dust, lint, hair, and anything that may reduce air flow.
- » Keep hair, loose clothing, fingers, and all parts of body away from openings and moving parts.
- » Turn off all controls before unplugging.
- » Use extra care when cleaning on stairs.
- » Do not use to pick up flammable or combustible liquids, such as petrol, or use in areas where they may be present.
- » Do not pick up toxic material (chlorine bleach, ammonia, drain cleaner, etc.)
- » Do not use appliance in an enclosed space filled with vapors given off by oil base paint, some mothproofing substances, flammable dust, or other explosive or toxic vapors.
- » Do not pick up hard or sharp objects such as glass, nails, screws, coins, etc.
- » Keep appliance on a level surface.
- » Do not carry appliance while in use.
- » Unplug before attaching the TurboBrush™ tool.

FOR OPERATION ON A 220-240 VOLT A.C. 50/60 HZ POWER SUPPLY ONLY.

This model is for household use only.

SAVE THESE INSTRUCTIONS FOR FUTURE USE

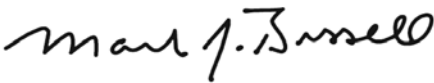
Thanks for buying a BISSELL deep cleaner

We're glad you purchased a BISSELL deep cleaner. Everything we know about floor care went into the design and construction of this complete, high-tech home cleaning system.

Your BISSELL deep cleaner is well made, and we back it with a limited two-year guarantee. We also stand behind it with a knowledgeable, dedicated Consumer Care department, so, should you ever have a problem, you'll receive fast, considerate assistance.

My great-grandfather invented the floor sweeper in 1876. Today, BISSELL is a global leader in the design, manufacture, and service of high quality homecare products like your BISSELL deep cleaner.

Thanks again, from all of us at BISSELL.







Mark J. Bissell
Chairman & CEO

Safety Instructions	2
Product View	4
Assembly	5
Operations	6-7
Maintenance & Care	8
Troubleshooting	9
Replacement Parts	10
Accessories	10
Guarantee	11
Consumer Care	12

TIPS

- » Deep cleaning stairs and high-traffic areas on a regular basis helps prolong carpet life.
- » Deep cleaning carpeting regularly can reduce dust and allergens in your home.

	WARNING	AN ACTION OR ATTENTION IS NEEDED TO THIS AREA IN ORDER TO REDUCE THE RISK OF ELECTRIC SHOCK, FIRE, OR INJURY
	GUIDE	READ USER GUIDE FOR COMPLETE SAFETY AND USER INSTRUCTIONS
 	WEEE	DO NOT THROW THE APPLIANCE AWAY WITH THE NORMAL HOUSHOLD WASTE AT THE END OF ITS LIFE, BUT HAND IT IN AT AN OFFICIAL COLLECTION POINT FOR RECYCLING. BY DOING THIS YOU WILL HELP TO PRESERVE THE ENVIRONMENT.

Product View



- 1 Spray Trigger
- 2 Power Cord
- 3 Handle Assembly
- 4 Lower Cord Wrap
- 5 Upper Body
- 6 Lower Body
- 7 Collection Tank
- 8 Vent Cover (Containing Foam Filter)
- 9 Removable Nozzle
- 10 Collection Tank Latch
- 11 Cord Clip
- 12 Quick Release Cord Wrap™
- 13 Clean Water/Solution Tank
- 14 Power Lever
- 15 Recline Lever

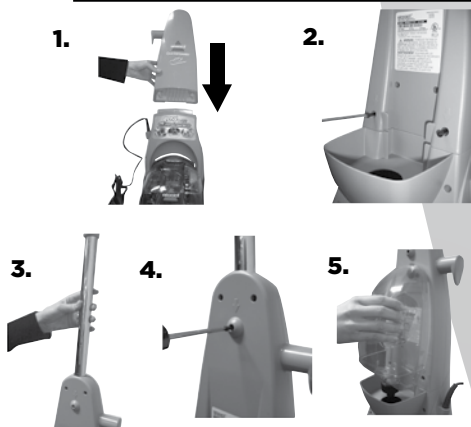


Assembly

1. Slide upper body into lower body.
2. Secure with screws.
3. Slide handle assembly down into upper body until it will go no further. Align screw slots.
4. Secure with screw.
5. Place clean water/solution tank on back of unit.

⚠️ WARNING

Do not plug in your deep cleaner until you have completely assembled it per the instructions and are familiar with all instructions and operating procedures.



Cleaning fluid

Keep plenty of genuine BISSELL 2X formula on hand so you can clean and protect whenever it fits your schedule. Always use genuine BISSELL deep cleaning formulas. Non-BISSELL cleaning solutions may harm the machine and will void the guarantee.

⚠️ WARNING

To reduce the risk of fire and electric shock due to internal component damage, use only BISSELL cleaning fluids intended for use with the deep cleaner.



24oz. 2X Wash & Protect PRO Professional Stain & Odour Formula w/ Scotchgard Protector
#78H6E



24oz. 2X Wash & Protect PET Pet Stain & Odour Formula w/ Scotchgard Protector
#99K5E



24oz. 2X Wash & Protect Stain & Odour Formula w/ Scotchgard Protector
#62E5E



24oz. 2X Wash & Refresh Blossom & Breeze Fragrance Formula w/ Febreze® Freshness
#1248E



24oz. 2X Wash & Refresh Cotton Fresh Formula w/ Febreze® Freshness
#1249E



24oz. 2X Wash & Refresh Natural Orange Formula
#83P3E



22oz. Stain Pretreat
#1147E



22oz. Pet Stain Pretreat
#1137E

Operations

Special Features

Scotchgard™ Protector

Carpet protection applied at the mill typically wears down over time from heavy foot traffic and everyday cleaning, including deep cleaning. To help restore this important protection, only BISSELL offers cleaning formulas with Scotchgard protector. This offers extra protection against dirt and tough stains to keep your carpets looking good longer.



Tip

» Always vacuum thoroughly before you deep clean. If possible, move large furniture to an area you will not be cleaning.

Before you clean

1. Remove easily moved furniture (chairs, lamps, coffee/cocktail tables, etc.) from room if needed.
2. Vacuum carpet thoroughly.
3. Decide where to begin. Plan to leave a path open to empty soiled water and refill cleaner.

NOTE: Carpeting will dry in three to four hours, depending on carpet style and air circulation in room. A floor fan speeds drying.

WARNING

To reduce the risk of fire, use only BISSELL Advanced Cleaning Formulas for full size machines in your deep cleaner. Use of cleaning formulas that contain lemon or pine oil may damage this appliance and void guarantee. Chemical spot cleaners or solvent-based soil removers should not be used. These products may react with the plastic materials used in your deep cleaner, causing cracking or pitting.

Fill the tank

1. Remove the clean water/solution tank by lifting it straight up, then away from the lower body.
2. Unscrew the black cap at the bottom of the clean water/solution tank.
3. Fill to the FORMULA line with BISSELL cleaning formula. Fill the rest of the tank with hand hot (not boiling) tap water to the water fill line. Replace and tighten the black cap.
4. Place clean water/solution tank on lower body.
5. Rotate Quick Release Cord Wrap™ to release the power cord and plug into an outlet.

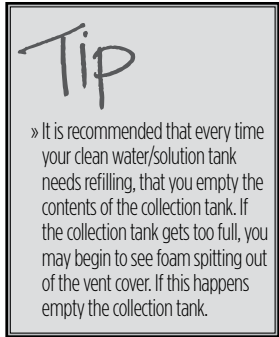
2.



Operations

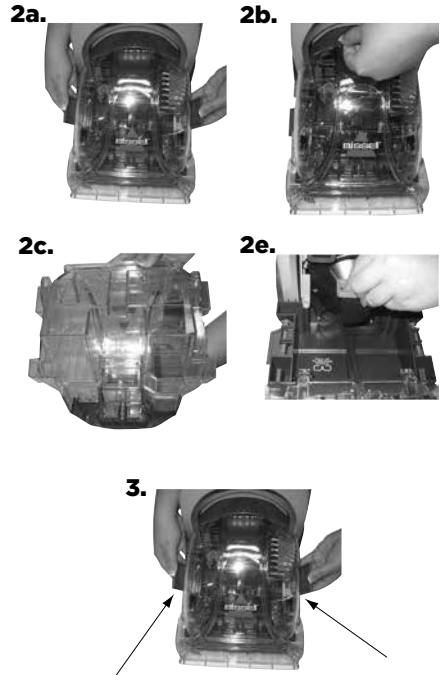
Carpet cleaning

1. With your foot, press the red power lever [located in foot of unit] ON.
2. With foot, press the recline lever on left side of lower body.
3. Depress spray trigger to spray cleaning solution. **Do not overwet.**
4. To suction up water, repeat motion over same area without pressing the spray trigger.
5. Repeat steps 3 and 4 until no more dirt can be removed.
6. Continue to clean entire carpet, working in 1m x 1m sections.
7. Empty the collection tank when dirty water reaches the full line, or when the clean water/solution tank is empty.
8. If floor nozzle stops spraying, turn power lever OFF and check water and cleaning solution levels. Refill if needed.



Empty collection tank

1. Turn power lever OFF and unplug power cord from outlet.
2. Remove and empty collection tank.
 - a. Release collection tank latches [1 each side] by pulling up from bottom of latch and then out.
 - b. Carefully remove collection tank from lower body by lifting handle.
 - c. Carry collection tank to a toilet or sink. To empty, pour out contents using opening at back of tank.
 - d. Rinse collection tank thoroughly.
 - e. Remove lint and hair from red gasket in base of unit. **(Do not remove gasket)**
3. Clean nozzle window by lifting latch and removing from machine. Rinse under running water. When finished replace nozzle and secure with latch.
4. Replace collection tank on base of unit and secure with latches.




Maintenance & Care

When you're done

1. Turn power lever OFF.
2. Unplug power cord from outlet.
3. Remove and empty collection tank.
 - a. Release collection tank latches [1 each side] by pulling up from bottom of latch and then out.
 - b. Carefully lift collection tank from lower body.
 - c. Carry collection tank to a toilet or sink. To empty, pour out contents using opening at back of tank.
 - d. Rinse collection tank thoroughly.
 - e. Remove lint and hair from red gasket in base of unit. (Do not remove gasket)
4. Clean nozzle window by lifting latch and removing from machine. Rinse under running water. When finished replace nozzle and secure with latch.
5. Replace collection tank on lower body and secure with latches.
6. Wrap power cord around Quick Release Cord Wrap™ on side of deep cleaner.
7. Wipe all surfaces with a soft cloth. Store cleaner upright in a protected, dry area.

NOTE: You may have cleaning solution remaining in the clean water/solution tank. You may store your deep cleaner this way for the next cleaning task, but never keep soiled solution in the collection tank.

WARNING

To reduce the risk of electric shock, push power button  off and disconnect plug from electrical outlet before performing maintenance or troubleshooting checks.

CAUTION

Do not store unit where freezing may occur. Damage to internal components may result.

Troubleshooting

WARNING

To reduce the risk of electric shock, push power button  off and disconnect plug from electrical outlet before performing maintenance or troubleshooting checks.

Problem	Possible causes	Remedies
Reduced spray OR no spray	Clean water/solution tank empty	Refill tank with water and formula
	Clean water/solution tank cap clogged	Soak tank cap in warm water and then rinse under running water
Deep cleaner not picking up cleaning solution	Collection tank not aligned/secured	Check tank for proper alignment and secure with side latches
	Collection tank full	Empty tank
	Removable nozzle installed improperly	Align four "hooks" into bottom first, then snap into place on top
	Removable nozzle full of debris	Remove nozzle and rinse under running water
	Red lint screen under collection tank clogged	Remove debris from lint screen

Please do not return this product to the store.

Other maintenance or service not included in the manual should be performed by an authorized service representative.

Thank you for selecting a BISSELL product.

Replacement Parts


These items are available for your BISSELL deep cleaner.
Visit www.BISSELL.com

PART #	PART NAME		PART #	PART NAME	
203-5540	Solution Tank (Includes Cap and Insert Assembly)		203-5571	Collection Tank	
203-5541	Solution Tank Cap and Insert Assembly		203-5527	Foam Filter	
203-5546	DirtLifter™ PowerBrush				

Cleaning Formula: Refer to bottom of page 5 of this guide for a full selection of cleaning formula available for purchase.

Accessories

These items are available for your BISSELL deep cleaner.
Visit www.BISSELL.com

PART #	PART NAME		PART #	PART NAME	
203-5548	Hard Floor Tool				

*Not all parts are included with every model.

Consumer Guarantee

This Guarantee only applies outside of the USA and Canada. It is provided by BISSELL International Trading Company BV ("BISSELL").

This Guarantee is provided by BISSELL. It gives you specific rights. It is offered as an additional benefit to your rights under law. You also have other rights under law which may vary from country to country. You can find out about your legal rights and remedies by contacting your local consumer advice service. Nothing in this Guarantee will replace or lessen any of your legal rights or remedies. If you need additional instruction regarding this Guarantee or have questions regarding what it may cover, please contact BISSELL Consumer Care or contact your local distributor.

This Guarantee is given to the original purchaser of the product from new and is not transferable. You must be able to evidence the date of purchase in order to claim under this Guarantee.

Limited Two-Year Guarantee

Subject to the *EXCEPTIONS AND EXCLUSIONS identified below, BISSELL will for two years from the date of purchase by the original purchaser repair or replace (with new or remanufactured components or products), at BISSELL's option, free of charge, any defective or malfunctioning part or product.

BISSELL recommends that the original packaging and evidence of the date of purchase be kept for the duration of the Guarantee period in case the need arises within the period to claim on the Guarantee. Keeping the original packaging will assist with any necessary re-packaging and transportation but is not a condition of the Guarantee.

If for your product is replaced by BISSELL under this Guarantee, the new item will benefit from the remainder of the term of this Guarantee (calculated from the date of the original purchase). The period of this Guarantee shall not be extended whether or not your product is repaired or replaced.

*EXCEPTIONS AND EXCLUSIONS FROM THE TERMS OF THE GUARANTEE

This Guarantee applies to products used for personal domestic use and not commercial or hire purposes. Consumable components such as filters, belts and mop pads, which must be replaced or serviced by the user from time to time, are not covered by this Guarantee.

This Guarantee does not apply to any defect arising from fair wear and tear. Damage or malfunction caused by the user or any third party whether as a result of accident, negligence, abuse, neglect, or any other use not in accordance with the User Guide is not covered by this Guarantee.

An unauthorised repair (or attempted repair) will void this Guarantee whether or not damage has been caused by that repair/attempt.

Removing or tampering with the Product Rating Label on the product or rendering it illegible will void this Guarantee.

SAVE AS SET OUT BELOW BISSELL AND ITS DISTRIBUTORS ARE NOT LIABLE FOR ANY LOSS OR DAMAGE THAT IS NOT FORESEEABLE OR FOR INCIDENTAL OR CONSEQUENTIAL DAMAGES OF ANY NATURE ASSOCIATED WITH THE USE OF THIS PRODUCT INCLUDING WITHOUT LIMITATION LOSS OF PROFIT, LOSS OF BUSINESS, BUSINESS INTERRUPTION, LOSS OF OPPORTUNITY, DISTRESS, INCONVENIENCE OR DISAPPOINTMENT. SAVE AS SET OUT BELOW BISSELL'S LIABILITY WILL NOT EXCEED THE PURCHASE PRICE OF THE PRODUCT.

BISSELL DOES NOT EXCLUDE OR LIMIT IN ANY WAY ITS LIABILITY FOR (A) DEATH OR PERSONAL INJURY CAUSED BY OUR NEGLIGENCE OR THE NEGLIGENCE OF OUR EMPLOYEES, AGENTS OR SUBCONTRACTORS; (B) FRAUD OR FRAUDULENT MISREPRESENTATION; (C) OR FOR ANY OTHER MATTER WHICH CANNOT BE EXCLUDED OR LIMITED UNDER LAW.

FOR AUSTRALIAN CONSUMERS ONLY:

OUR GOODS COME WITH GUARANTEES THAT CANNOT BE EXCLUDED UNDER THE AUSTRALIAN CONSUMER LAW. YOU ARE ENTITLED TO A REPLACEMENT OR REFUND FOR A MAJOR FAILURE AND FOR COMPENSATION FOR ANY OTHER REASONABLY FORESEEABLE LOSS OR DAMAGE. YOU ARE ALSO ENTITLED TO HAVE THE GOODS REPAIRED OR REPLACED IF THE GOODS FAIL TO BE OF ACCEPTABLE QUALITY AND THE FAILURE DOES NOT AMOUNT TO A MAJOR FAILURE.

THIS GUARANTEE IS IN ADDITION TO OTHER RIGHTS OR REMEDIES UNDER LAW. NOTHING IN THIS GUARANTEE EXCLUDES, LIMITS OR MODIFIES ANY LIABILITY OF BISSELL WHICH IS IMPOSED BY LAW, OR LIMITS OR MODIFIES ANY REMEDY AVAILABLE TO THE CONSUMER WHICH IS GRANTED BY LAW.

TO MAKE A CLAIM UNDER THIS GUARANTEE CONTACT BISSELL AUSTRALIA PTY LTD (DETAILS ABOVE). CONTACT BISSELL PRIOR TO RETURNING ANY GOODS. WHERE AGREED, BISSELL WILL REIMBURSE REASONABLE POSTAGE / HANDLING COSTS (IF ANY) FOR RETURNING GOODS TO BISSELL.

Consumer Care

If your BISSELL product should require service or to claim under our Limited Two-Year Guarantee, please visit:

Website or E-mail:

www.BISSELL.com

For Australian inquiries:

Monday - Friday 9am - 5pm

BISSELL AUSTRALIA PTY LIMITED

42 Rocco Dr.

Scoresby 3179

Victoria

Australia

Telephone: 1-800-811-183

For New Zealand inquiries:

Monday - Friday 9 am - 5 pm

Parex Industries Ltd.

5 Tolich Place

Henderson 0610

Auckland

New Zealand

Telephone: 0800-247-735

Visit the BISSELL website: www.BISSELL.com

When contacting BISSELL, have model number of cleaner available.

Please record your Model Number: _____ Please record your Purchase Date: _____

NOTE: Please keep your original sales receipt. It provides proof of the date of purchase in the event of a Guarantee claim. See Guarantee for details.



©2014 BISSELL Homecare, Inc.
Grand Rapids, Michigan
All rights reserved. Printed in China
Part Number 160-4228 Rev 06/14
Visit our website at: www.BISSELL.com
Scotchgard is a trademark of 3M

Ambi Pur is a trademark of The Proctor & Gamble Company, Cincinnati, Ohio used under license by BISSELL Homecare, Inc.