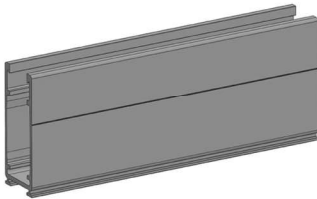
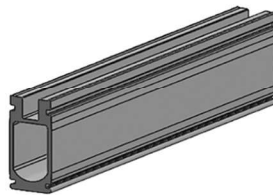


Item #	Description
Kits	3 Module Per Column
90057	3 Module First Column Kit - (2) 85" rails, (2) 42.5" rails, (4) 2" Tee-Fittings, (2) Splices, (4) Pipe Mounts, (8) 5050 Clamps, (4) End Caps, (8) Module Lead Clips and (1) Ground Clamp
90064	3 Module Add-On Column Kit - (2) 85" rails, (2) 42.5" rails, (2) 2" Tee-Fittings, (2) Splices, (4) Pipe Mounts, (8) 5050 Clamps, (4) End Caps, (8) Module Lead Clips
Kits	4 Modules Per Column
90071	4 Module First Column Kit - (4) 85" rails, (4) 2" Tee-Fittings, (2) Splices, (4) Pipe Mounts, (10) 5050 Clamps, (4) End Caps, (8) Module Lead Clips and (1) Ground Clamp
90088	4 Module Add-On Column Kit - (4) 85" rails, (2) 2" Tee-Fittings, (2) Splices, (4) Pipe Mounts, (10) 5050 Clamps, (4) End Caps and (8) Module Lead Clips
	Cross Brace Tee - Order separately when Cross Bracing is required
89778	2-inch Swivel Tee-Fitting for cross bracing. Use 1 for each vertical post when bracing is required.



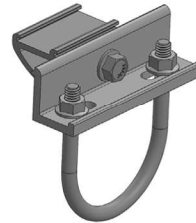
3.1 Mill Finish Rail

Our 3.1-inch heavy duty rail provides great performance with extreme wind and snow loads.



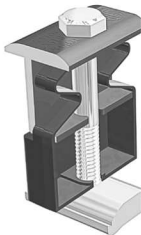
3.1 Structural Rail Splice

Quickly splice and bond 3.1-inch rail sections. Top Clamps can be co-located with splice. Wires and connectors can be run through opening.



Pipe Mount Adapter

Securely mount the rail to the horizontal 2-inch pipe.



50-50 Bonding Clamp

One clamp can be used as a mid-clamp or an end-clamp on modules with 30 mm to 40 mm frame height.



Aluminum T-Fitting

Connect vertical 2-inch pipe to horizontal 2-inch pipe.



Swivel T-Fitting*

Use for wind cross-bracing front to back vertical posts.



Push-On End Cap

Gives the installation a finished look and keeps insects from nesting in the rails.



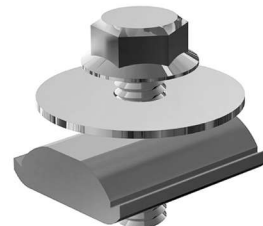
Module Lead Clip

Pushes into top of rail to keep cables in place.



Ground Lug

Use one per module column to ground rail with bare 6 to 10 AWG copper wire.



MLPE Adapter*

Use for mounting micro-inverters and optimizers on the rails under the solar modules.

* = Not included with any kit.