



FLUSH MOUNT RAIL KIT EIGHT 93-INCH RAILS

Save Time and Money

Attractive black rail mounting system provides easy installation, simple wire management, and great strength all in a single box



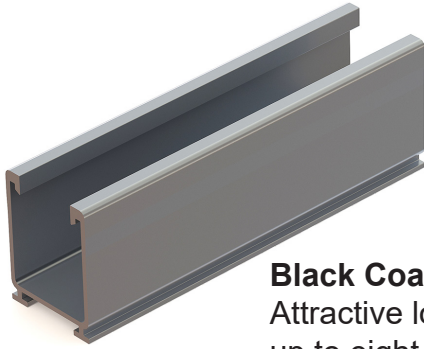
- Kit contains all parts required to mount 8 modules with widths of up to 46-inches in portrait orientation *
- 1.6 or 2.3-inch rail height for spans up to 10 feet and wind speed up to 180 MPH
- Module clamps included in kits fit frame thickness of 30mm to 40mm; additional clamps available for modules with thicker frames
- UPS shippable

* Total length of a single row of modules is 372-inches.

- Best Wire Management** - PV cables and wiring for module-level electronics fits inside rails to avoid time consuming wire management.
- Use Any Roof Attachments - Included L-feet** mount to Tamarack composition shingle flashings, S-5! metal roof clamps or any roof attachment that can be used with a 5/16 inch bolt.
- One Wrench Size** - Install with ease and minimal tools. A 1/2-inch socket fits all fasteners.
- UL 2703 Listed** - All components meet UL standards and have Class A Fire Rating for Type 1 and 2 modules.
- PE Certified** - Pre-stamped engineering letters available for most states.

Tamarack Flush Mount 93-inch Rail Kit

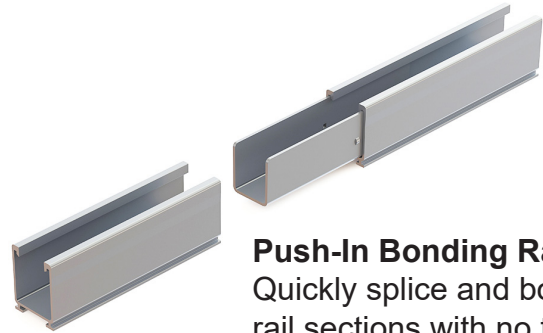
Install Eight PV Modules



Black Coated Rails

Attractive low-profile mounting of up to eight modules with four-foot roof attachment spacing. Certified for up to 180 MPH wind speed and 120 PSF snow load.

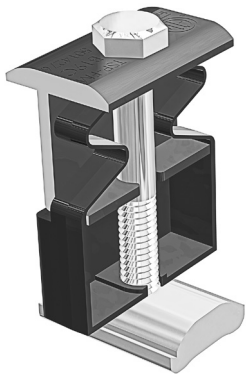
Eight 93-inch rails included.



Push-In Bonding Rail Splice

Quickly splice and bond rail sections with no tools or fasteners. Top Clamps and Rail Mounts can be co-located with splice.

8 splices are included.



5050 Clamp

One clamp can be used as a mid-clamp or an end-clamp on modules with 30 mm to 40 mm frame height.

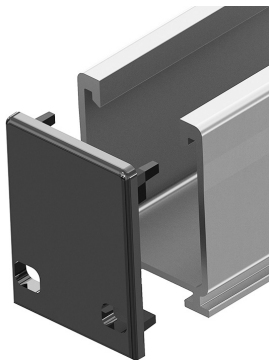
20 clamps included.



Rail Mount and L-Foot

Quickly and securely mount the rail from either side, to Tamarack composition shingle flashings, S-5! metal roof clamps or any roof attachment that can be used with a 5/16 inch bolt.

16 mounts and L-feet included.



Push-On End Cap

Caps give the rail system a finished look while allowing drainage.

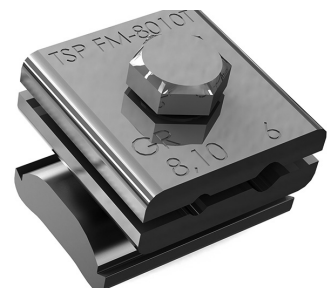
8 caps included.



Wire Management Clip

Clips can be pushed into top of rail to keep cables in place.

24 clips included.



Ground Lug

Use one per module row to ground rail with bare 6 to 10 AWG copper wire.

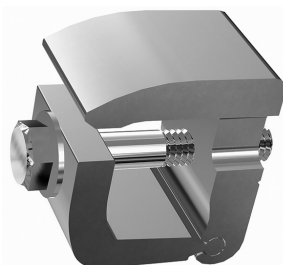
4 Ground Lugs included.

Channel End Clamp

This end clamp replaces the 50/50 clamp at the end of the row of modules for better aesthetics.

It is your choice which part to use.

8 clamps included.



MLPE Adapter

Use this adapter for mounting microinverters and optimizers on the rails under the modules. Use one adapter for each device.

8 adapters included.

