



# FLUSH MOUNT RAIL KIT FOUR 93-INCH RAILS

## Save Time and Money

Attractive black rail mounting system provides easy installation, simple wire management, and great strength all in a single box



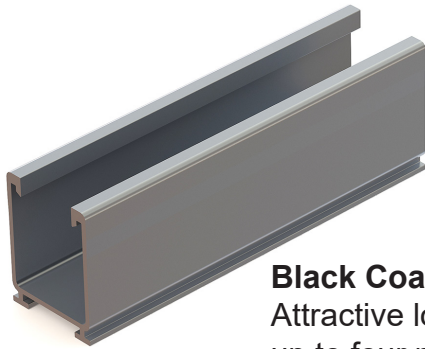
- Kit contains all parts required to mount 4 modules with widths of up to 46-inches in portrait orientation \*
- 1.6 or 2.3-inch rail height for spans up to 10 feet and wind speed up to 180 MPH
- Module clamps included in kits fit frame thickness of 30mm to 40mm; additional clamps available for modules with thicker frames
- UPS shippable

\* Total length of a single row of modules is 372-inches.

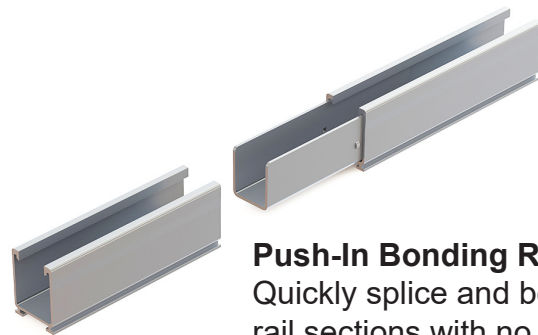
- Best Wire Management** - PV cables and wiring for module-level electronics fits inside rails to avoid time consuming wire management.
- Use Any Roof Attachments - Included L-feet** mount to Tamarack composition shingle flashings, S-5! metal roof clamps or any roof attachment that can be used with a 5/16 inch bolt.
- One Wrench Size** - Install with ease and minimal tools. A 1/2-inch socket fits all fasteners.
- UL 2703 Listed** - All components meet UL standards and have Class A Fire Rating for Type 1 and 2 modules.
- PE Certified** - Pre-stamped engineering letters available for most states.

# Tamarack Flush Mount 93-inch Rail Kit

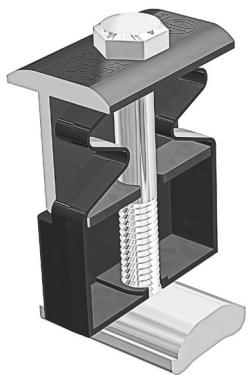
## Install Four PV Modules



**Black Coated Rails**  
Attractive low-profile mounting of up to four modules with four-foot roof attachment spacing. Certified for up to 180 MPH wind speed and 120 PSF snow load.  
**Four 93-inch rails included.**



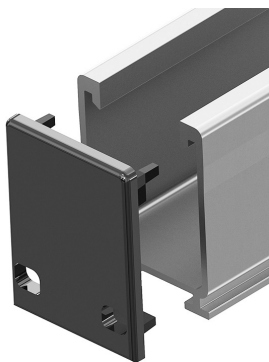
**Push-In Bonding Rail Splice**  
Quickly splice and bond rail sections with no tools or fasteners. Top Clamps and Rail Mounts can be co-located with splice.  
**4 splices included.**



**5050 Clamp**  
One clamp can be used as a mid-clamp or an end-clamp on modules with 30 mm to 40 mm frame height.  
**10 clamps included.**



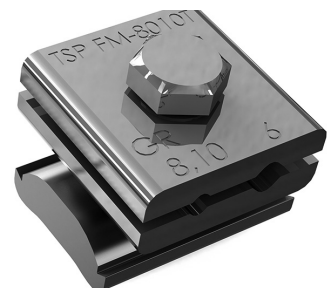
**Rail Mount and L-Foot**  
Quickly and securely mount the rail from either side, to Tamarack composition shingle flashings, S-5! metal roof clamps or any roof attachment that can be used with a 5/16 inch bolt.  
**8 mounts and L-feet included.**



**Push-On End Cap**  
Caps give the rail system a finished look while allowing drainage.  
**4 caps included.**

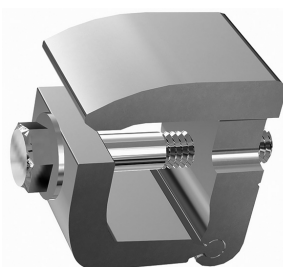


**Wire Management Clip**  
Clips can be pushed into top of rail to keep cables in place.  
**12 clips included.**



**Ground Lug**  
Use one per module row to ground rail with bare 6 to 10 AWG copper wire.  
**2 Ground Lugs included.**

**Channel End Clamp**  
This end clamp replaces the 50/50 clamp at the end of the row of modules for better aesthetics. It is your choice which part to use.  
**4 clamps included.**



**MLPE Adapter**  
Use this adapter for mounting microinverters and optimizers on the rails under the modules. Use one adapter for each device.  
**4 adapters included.**

