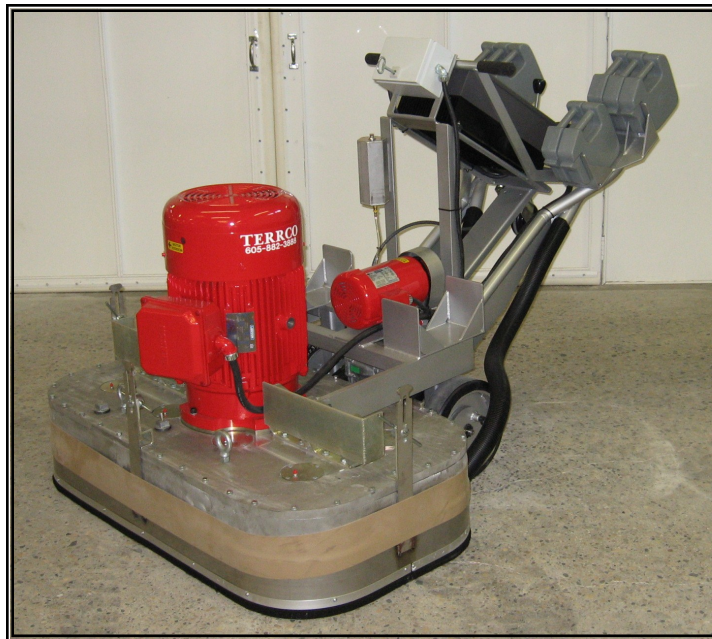


Terrco[®], Inc.

Model 6200



OPERATING INSTRUCTIONS

MAINTENANCE INSTRUCTIONS

ILLUSTRATED PARTS LIST

Terrco[®], Inc.

222 1st Avenue NW • Watertown, SD 57201

Phone: (605) 882-3888 • Fax: (605) 882-0778 • Email: info@terrco.com

Terrco[®] Model 6200

Specifications:

HP/KW	40/30
Voltage	460
Phase	3
Drive	Variable
Amp Draw	46
Breaker (Amps)	60-80
Stone Holder RPM	400-760
Sweep of Discs	53-1/2" (1397 mm)
Abrasive Pressure	1885 lbs (855 kg)
Width of Machine	55" (1397 mm)
Length of Machine	80" (2032 mm)
Height of Machine	54" (1372 mm)
Net Weight	2300 lbs (1043 kg)
Shipping Weight	2565 lbs (1163 kg)
Power Cord (6-4)	100 ft (30,5 m)

Production Rates:

- Mastic removal Rate of 1,000 sq. ft. per hour
- Thin-Set removal rates of 1,000 sq. ft. per hour
- Thin-Mil coatings removal of 800 sq. ft. per hour
- Concrete polishing rates of 10,000 sq. ft. per polishing pad

- Optimal for jobs exceeding 20,000 sq. ft.
- Despite the weight and size the 6200 is easily maneuverable
- Movable weights for easy one person operation
- Variable Speed Drive
- Stainless Steel Guard with four vacuum ports
- Dry Setup
- Handle Separates from Gear Case to Allow Handle and Case to go through Standard 36" Door
- Ten 42 lbs. Pocket Weights to Control Grinding Pressure

Terrco[®], Inc.

- 222 1ST AVE. NW
- WATERTOWN, SD 57201
- EMAIL: info@terrco.com
- PHONE: (605) 882-3888
- FAX: (605) 882-0778
- WEBSITE: www.terrco.com

SAFTY PRECAUTIONS

This machine is intended for commercial use. It is designed exclusively to grind and polish Terrazzo and concrete floors. Use only recommended accessories and abrasives.

When the machine is in need of repair, use only Terrco parts. All operators must read, understand and practice the following safety precautions.



WARNING: Rotating grinding wheels can cause injury, keep hands and loose clothing clear.



WARNING: Disconnect power at the machine before servicing or changing grinding stones.




WARNING: Always check ground (earth) connection prior to operating machine.

For Safety:

- 1: Have electrician hook up power to machine.
- 2: Always operate machine with ground fault protection.
- 3: Eye, hearing and respiratory protection advised.
- 4: Service and adjust guards for maximum protection. Never remove the guards.
- 5: Keep machine clean and properly serviced.

SAFETY LABEL

This safety label is located on the machine as indicated below.
Replace label if it is damaged or illegible.

 WARNING FOR SAFETY, READ OWNERS MANUAL BEFORE USING MACHINE	
	ROTATING CUTTERS KEEP GUARDS IN PLACE AND ADJUSTED KEEP HANDS AND FEET AWAY WHEN OPERATING
	WEAR EYE AND HEARING PROTECTION WHILE OPERATING THE MACHINE
	GRINDING CAN GENERATE DUST. DUST MAY AFFECT THE BREATHING FUNCTION. AVOID DUST CONTACT BY USE OF MASK OR RESPIRATOR.
	DISCONNECT POWER AT THE MACHINE BEFORE SERVICING MACHINE OR CHANGING GRINDING STONES. ALWAYS CHECK GROUND (EARTH) PRIOR TO OPERATING MACHINE.



SAFETY PRECAUTIONS WHEN RUNNING TERRCO GRINDERS

- A. Have a qualified electrician hook up correct power to the machine, grounded properly, with correct breakers at electrical source.
- B. When breaking down machine to change stones or to check machine always disconnect power to the machine.
- C. Check for wear to ensure no exposed wires.
- D. When grinding wet, employees must wear proper footwear.
- E. Always wear appropriate safety protection such as eyewear, hearing and if needed respiratory protection.
- F. When grinding, watch for problems on the floor such as bad joints, electrical covers, studs that can cause injury to operator or machine.
- G. Keep machines clean so any potential problems are visible.
- H. When using base machines, use guards for wet or dry grinding.
- I. Also when using base machines, operate with flexible shaft and housing as parallel to motor as possible to avoid kinks. Keep flex-shaft greased.

Operating Instructions

INTRODUCTION:

This manual has been prepared to assist you in the proper operation and maintenance of your machine. Please bear in mind that your TERRCO® 6200 is a precision piece of machinery manufactured to exacting standards. In order for you to obtain maximum use of your TERRCO® 6200, we suggest that you read this manual completely and thoroughly before attempting to operate your machine. A parts diagram and parts reference sheet are included to assist you in ordering the proper parts. Always give the machine number and model number when ordering repair parts.

PRELIMINARY PROCEDURES TO FOLLOW BEFORE PUTTING THE 6200 IN OPERATION FOR THE FIRST TIME.

A. Delivery of the Machine

1. On delivery, the contractor should very carefully examine the shipping crate to see that no part of the machine is damaged. If damage is noted, request an inspection immediately and request a copy of the claim report. When accepting the machine from the delivering carrier, note the damage on the Freight Bill before signing. TERRCO® WILL NOT honor any claims for broken, damaged, or missing parts that may have occurred in shipment, as each machine is checked and inspected for the same, before leaving our plant.

B. Installation and Replacement of Grinding Stones

1. Move the counterbalancing weights to the upper weight baskets.

2. Using the flop handle, tilt machine back so that the caster wheel rests on the floor.

3. Clean mounting surface both on plug stone and stone holder. On 2" or 3" diameter plug stone, push stone in the hole and give the stone a slight twist to be certain it is securely in place.

4. Grasp machine handle and lower machine to the floor slowly so that all stones are resting on the floor. Make certain no stones have fallen or loosened while lowering the machine to the floor.

C. Transport of Machine

1. With counterbalancing weights in the upper weight baskets, tilt the machine so that the caster wheel is firmly on the floor. You can use the flop handle to pull the machine or you can fold the flop handle over and push from gear case side.

D. To operate the 6200

1. Disconnect electrical source.

2. Install stones per instructions in #1B.

3. After stones are installed, lower the machine until it is in operating position. CAUTION - Never attempt to start the machine while lowering machine to the floor, as rear stones will strike on corners resulting in thrown stones and possible damage to the machine.

4. Before plugging into the electrical system, check the voltage at the source. The minimum acceptable voltage is (210/420 Volt, 60 HZ, 3 phase), or (380 Volt, 50 HZ, 3 Phase). Anything lower than this can result in blown heaters and possible motor burnout.

5. If the machine is to operate in an area more than 100 feet from the source, it will be necessary to use the next larger size cable (#4-4) from the source to the 100 feet of #6-4 wire cable that was furnished with the machine.

6. After you have the cable in place, relieve pressure on the stones by applying your weight on the handle and push the start button on the starter switch, then releasing pressure on the handle to lower the machine to the floor.

7. We recommend that the first pass over the floor be made with the weights in the upper weight baskets. After the floor is "roughed" out, move the weights to the weight baskets located on the gear case for maximum abrasive pressure.

8. Be sure to periodically check stone wear, to prevent grinding with the steel plugs, rather than the stones.

General Maintenance for your TERRCO[®] 6200

A. The Lubrication of the Machine

1. The lubrication of the main gear case
 - a. The main gear case contains Mobilith AW-1 grease.
 - b. Gear case grease level must be checked once a year. The level of grease in the gear case should be up to half the thickness of the helical gears. (Ref. No. 20 on the parts diagram).
2. The Lubrication of the Wheel Bearings.
 - a. Use grease gun and grease with 1/2 shot once every six months on each wheel with Mobilith AW-1 or equivalent.
3. Location of the grease fittings.
 - a. Eight fittings on bearing caps on top of gear case (Ref. No. 10). Lubricate these fittings with three shots of Mobilith AW-1 or equivalent every six months.

B. Keeping Machine Clean

1. Daily schedule after each day's grinding.
 - a. Tilt machine back on handle.
 - b. Clean under carriage with water using garden hose and nozzle.
 - c. Clean all grease fittings.
2. Do not let any cake-up of cement grinding paste occur as this could create an overload on your machine as well as more weight to push.

C. Replacement of worn, damaged, or missing parts.

1. Advantages
 - a. If worn parts (bearings, gears, etc.) are not replaced promptly, serious damage to your machine could occur.
 - b. Your machine will operate more efficiently with new TERRCO[®] parts.
2. Use only authorized TERRCO[®] parts as our warranty will not apply if other than factory authorized TERRCO[®] parts are used.

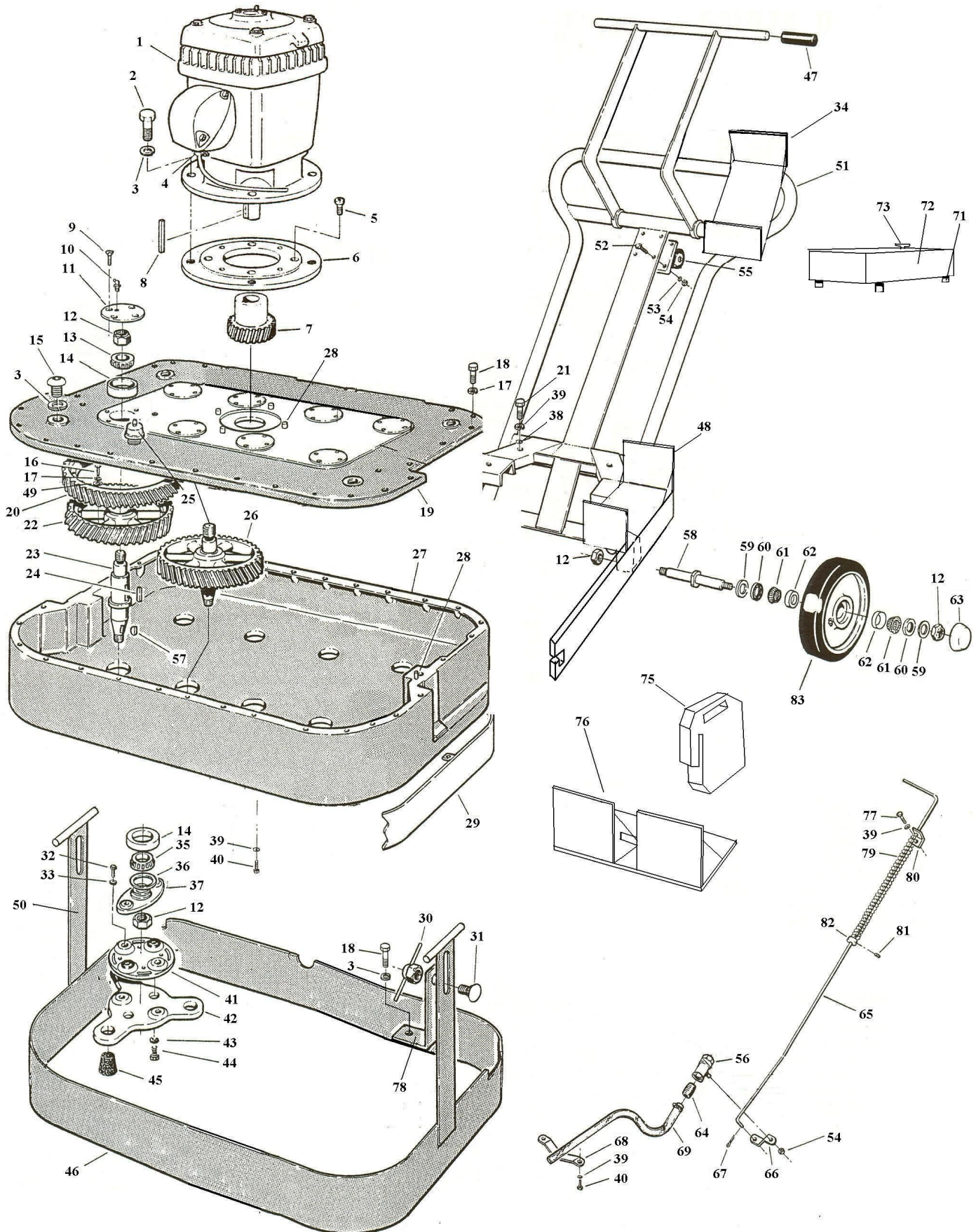
D. Morflex Flexible Couplings

1. Bolts (Ref. No. 34) should be checked weekly for tightness. Loose bolts cause extreme vibration and premature failure of rubber inserts in the couplings.
2. Your flexible couplings (Ref. No. 41) should be changed a minimum of once a year whether you use you machine or not.

E. Stone Wear and Replacement.

1. Check your stones for wear periodically, as the stones may be worn flush with stone holder plugs and the operator may be grinding with the steel stone spiders.

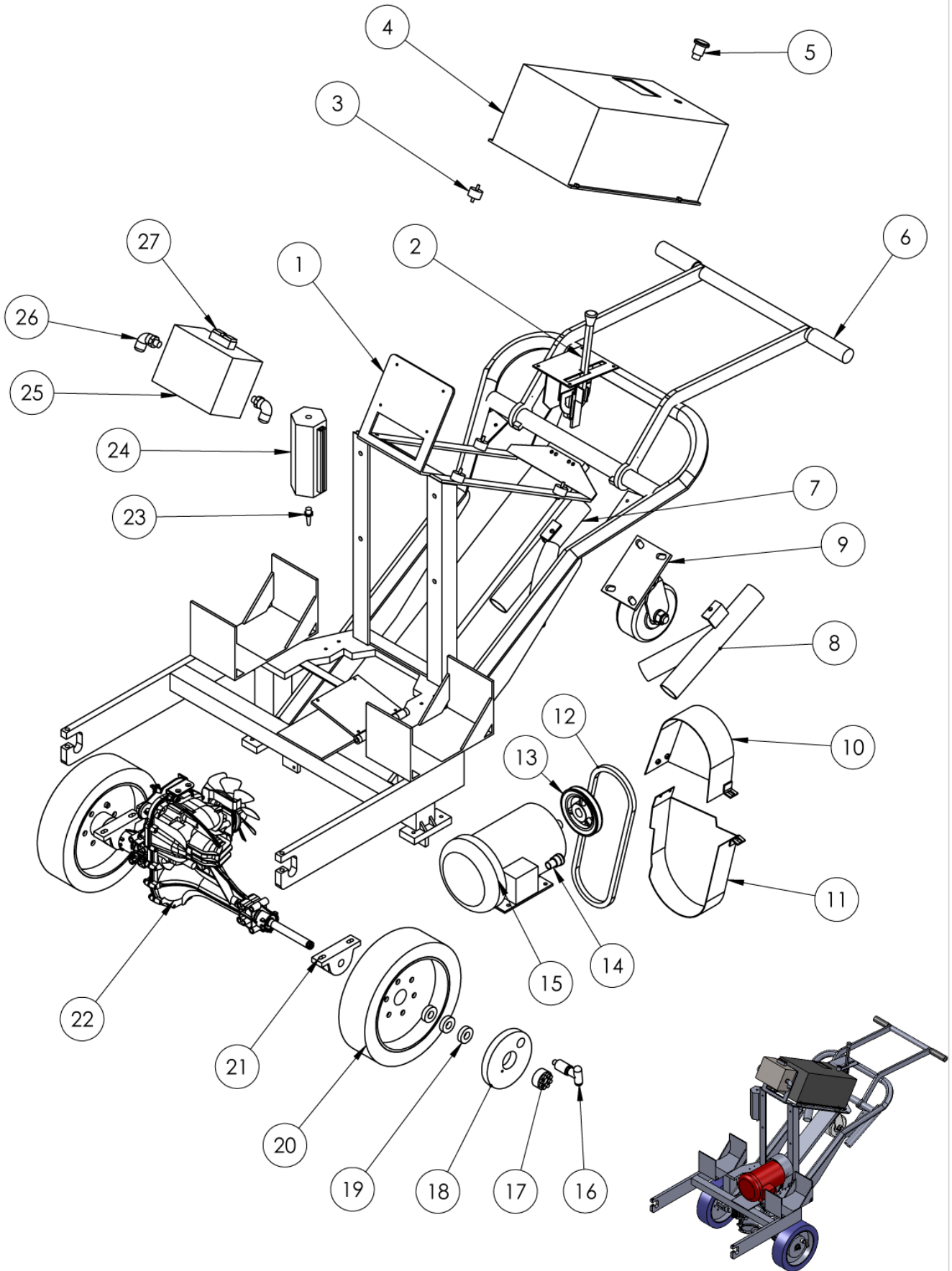
6200 MOTOR, GEAR BOX & HANDLE ASSEMBLY



Model 6200 Parts List

Ref. #	Part #	Description	Qty	Ref. #	Part #	Description	Qty
1	FE147B	40 H.P., 3 PH, 1770 RPM, 230/460V Motor	1	51	FEN26	Handle Assembly	1
2	2142	Capscrew	4	52	2038	Capscrew	4
3	2140	Lock Washer	3	53	1030	Lock Washer	4
4	X85	90 Degree Cord Connector	1	54	2003	Nut	5
5	2111	Mounting Ring Bolts	4	55	HB88B	Caster	1
6	FE-130-6200	Motor Mounting Plate	1	56	FE72	Water Valve	1
7	FE254	Pinion, 30HP Elec Motor, 1.875"	1	57	2012	Key	8
8	FE-114	Motor Key, Electric	1	58	FE20B	Wheel Shaft	2
9	3011	Machine Screw	32	59	2141	Wheel Bearing Spacer	4
10	T2118	Grease Fitting 45 Degree	8	60	DS236	Wheel Bearing Seal	4
11	FE-27	Bearing Cap	8	61	DS235	Wheel Bearing Cone	4
12	2008	Lock Nut	18	62	DS234	Wheel Bearing Cup	4
13	SM-43	Bearing Cone	8	63	DS5	Wheel Cap	2
14	SM-37	Bearing Cup	16	64	FE189	Valve Stem	2
15	2139	Capscrew	4	65	FE79	Water Tank Rod	1
16	2099	Capscrew	16	66	LW10	Water Valve Lever	1
17	1022	Lock Washer	30	67	2082	Cotter Pin	1
18	1025	Capscrew	30	68	SM172	Hose Bracket Clamp	1
19	FE252	Gear Case Cover	1	69	FS39	Clear Water Hose	1
20	FE125B	Drive Gear, Electric	2	70			
21	T2130	Capscrew	2	71	X84	Bracket	4
22	FE4B	Driven Gear RH	4	72	FE263	Inverter Starter-40HP	1
23	SM16	Gear Shaft	8	73	LW76	Emergency Stop	1
24	SM72	Helical Gear Key	8	74	FE251	Rubber Mount	4
25	FEN17	Grease Vent Assy	1	75	FE246	Pocket Weight, Casting, 42 Lb.	10
26	SM15	Driven Gear LH	4	76		Lower Weight Basket	2
27	FE253	Gear Case	1	77	2018	Capscrew	1
28	FD40	Dowel Pin	6	78	FE271	Strap Bracket	2
29	FE259	Stationary Guard	1	79	SM182	Spring	1
30	FEN9	Splash Guard Lock Nut	3	80	FD43	Water Guide Bracket	1
31	FE153	Splash Guard Bolt	3	81	2080	Set Screw	1
32	SM171	Capscrew	32	82	SM186	Handle Spacer Collar	1
33	2027	Washer	32	83	DS7	Wheel	2
34	FE256	Upper Weight Basket	2				
35	SM36	Bearing Cone	8				
36	SM169	Grease Seal	8		Parts Not Pictured		
37	SM89	Driving Spider	8		SM424	50 Amp Male Plug	2
38	2148	Washer	4		SM 425	50 Amp Connector	2
39	1007	Lock Washer	12		DS134	6-4 Cable, Feet	100
40	1033	Capscrew	12		X86	Straight Cord Connectors	2
41	SM88	Morflex Coupling	8		FE266	Vacuum Pipes	2
42	SM192B	Stone Spider-Plug	8		FE262	Rubber Dust Seal	1
43	2027	Washer	32		FE270	Front Guard Bracket	1
44	SM171	Capscrew	32		LW78	Brush Strip	2
45	FR594	Plug Stone-2" Diameter (Not Included)	24				
46	FE260	Movable Splash Guard Assy	1				
47	SM57	Handle Grips	2				
48	FE256B	Lower Weight Basket	2				
49	HB-25	Washer	16				
50	FE29SS	Splash Guard Strap	3				

MODEL 6200 HANDLE



ITEM NO.	PART NUMBER	DESCRIPTION	QTY.
1	FEN 025	HANDLE BAR - 6200	1
2	FE 307	CONTROL ASSEMBLY	1
3	FE 251	VIBRATION MOUNT	4
4	FE 263	VARIABLE SPEED DRIVE - 40 HP	1
5	LW 076	EMERGENCY STOP	1
6	SM 057	HANDLE GRIP	2
7	SM 457	Y-PIPE RH	1
8	SM 457LH	Y-PIPE LH	1
9	HB 088B	CASTER	1
10	FE 474	UPPER BELT GUARD	1
11	FE 475	LOWER BELT GUARD	1
12	FE 294	V-BELT	1
13	FE 293	PULLEY	1
14	X-81	STRAIGHT CORD CONNECTOR	3
15	FE 292	2 HP MOTOR	1
16	FE 291	PULL PIN	2
17	FE 285	KEYLESS LOCKING HUB	2
18	FE 280	AXLE DRIVE PLATE	2
19	FE 290	WHEEL BEARING	6
20	FE 267	SELP PROPELLED WHEEL	2
21	FE 287	PILLOW BLOCK	2
22	FE 284	TRANSAXLE	1
23	T3047	HOSE BARB	1
24	FE 289	EXPANSION TANK	1
25	SM 113-SMALL BOX	ENCLOSURE	1
	T6010	CONTACTOR	1
	T6110	OVERLOAD	1
26	X-80	90 DEG CORD CONNECTOR	3
27	SM 091-BUTTON	START/STOP BUTTON	1

WARRANTY CLAIM PROCEDURE

Each new machine is covered by two separate, distinct warranties—one on the machine and one on the electric motor of gasoline engine. Read VERY CAREFULLY the Terrco[®] warranty covering the machine, as this will tell you whether you have a warranty claim or not. If your machine is under warranty and malfunctions, determine whether your problem is electrical or mechanical, and do the following:

I. Electrical.

- A. Consult the list of authorized motor repair stations sent with the machine and locate the station nearest you.
- B. Contact the repair station, giving them the following information:
 - 1. Complete nameplate data from the motor.
 - 2. Tell them that the machine is a terrazzo grinding and polishing machine.
 - 3. Give them a description or rundown of the trouble.
 - 4. Inform them of the voltage and amperage readings

II. Mechanical

- A. Contact your Terrco[®] Distributor giving them the following:
 - 1. Model and date purchased.
 - 2. Horsepower.
 - 3. Accurate description of the malfunction.
- B. If there is no Terrco[®] Distributor in your area call or write to us with the above information.

LIMITED ONE YEAR WARRANTY

TERRCO[®], Inc. warrants the original purchaser of the Terrco[®] grinding equipment to be free from defects in materials and workmanship under normal use and service. Our obligation under this warranty shall be limited to the repair or exchange of any part or parts which may prove defective under normal use and service within one year from date of purchase by, the original purchaser, and which our examination shall disclose to our satisfaction to be defective.

All equipment returned for repairs or exchange must be returned to: TERRCO[®], Inc., at the purchaser's expense and within the warranty period. All repaired or exchanged equipment will be shipped back to the purchaser F.O.B. Watertown, South Dakota.

THIS WARRANTY IS EXPRESSLY IN LIEU OF ALL OTHER WARRANTIES EXPRESSED OR IMPLIED INCLUDING THE WARRANTIES OR MERCHANTABILITY AND FITNESS FOR USE AND ALL OTHER OBLIGATIONS OR LIABILITIES ON THE PART OF TERRCO[®], INC. AND WE NEITHER ASSUME OR AUTHORIZE ANY OTHER PERSON TO ASSUME FOR US, ANY OTHER LIABILITY IN CONNECTION WITH THE SALE OF THIS EQUIPMENT. SOME STATES DO NOT ALLOW THE EXCLUSIONS OR LIMITATIONS ON IMPLIED WARRANTIES OR DO NOT ALLOW THE EXCLUSION OF LIMITATION OF INCIDENTAL OR CONSEQUENTIAL DAMAGES, SO THE ABOVE EXCLUSIONS OR LIMITATIONS MAY NOT APPLY TO YOU. THIS WARRANTY SHALL NOT APPLY TO ANY EQUIPMENT OR PART THEREOF WHICH HAS BEEN SUBJECT TO ACCIDENT, NEGLIGENCE, ALTERATIONS, ABUSE, MISUSE, OR IMPROPER MAINTENANCE. TERRCO[®], INC. MAKES NO WARRANTIES WHATSOEVER IN RESPECT TO ACCESSORIES OR PARTS NOT MANUFACTURED OR SUPPLIED BY US.