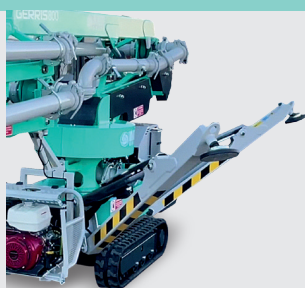


GERRIS 800

Crawler concrete placing boom

Gerris 800 Double motorization
Main: Honda GX390 petrol - 8.2 kW
Auxiliary: single-phase 230V/50Hz - 2.2 kW
1128754 **NEW**



Self-propelled undercarriage on extendable tracks, for easy mobility even on the most uneven terrain.

Automatic levelling outriggers system. Outrigger pads diameter 200 mm. Single outrigger pad ground pressure 4.34 kg/cm².



Honda GX390 main engine. Electric start from the control panel or radio-control.

Auxiliary electric motor. It allows to work connected to the power network even in closed environments, in the absence of exhaust gases and noise of the petrol engine.

Description

Gerris 800 is a self-propelled crawler concrete placing boom, with reduced dimensions (800 x 4930 mm) and low weight.

It is used to distribute pumped concrete, in any position within its range of about 8 m and up to a height of 11.20 m.

The distribution boom requires a small space for its opening (2.80 m). It is therefore able to operate even in places with not particularly high floors.

Radio-controlled, simple and intuitive to maneuver and to position in the working area, thanks to the self-levelling outriggers.

The auxiliary electric motorization allows to operate even in closed environments, in the absence of exhaust gases and noise of the petrol engine.

Suitable for laying pumped mortars / concretes with a maximum grain size of 25 mm (1"):

- Laying of concrete on foundation slabs
- Laying of concrete on floors
- Laying of concrete for pavements
- Filling of formwork for masonry works
- Filling of formwork for the construction of swimming pools
- Filling of formwork for columns (also disposable)
- Filling of THERMAL INSULATION walls in EPS / EXPANDED CLAY / VEGETABLE FIBERS, with collaborating formwork or diffused reinforcement
- Filling of prefabricated reinforced concrete walls
- Filling of load-bearing reinforced walls
- Filling castings for containment or foundation piles

Combined use with Booster 15 is recommended.

Operation

Handling

At the discretion of the operator, the petrol engine can be started directly from the remote control, or the machine can be connected to the mains via an extension cable. Pushing two levers in the remote control starts the tracks and the machine begins to move in the desired direction. To improve the stability of the machine when driving on heavy surfaces, the tracks can be widened simply by acting on the remote control. In case of excessive inclination of the chassis while driving, the machine stops automatically and signals the anomaly of use on the remote control. The self-propelled chassis has two travel speeds: "Slow" for maneuvering operations and "Fast" for long movements without obstacles.

Stabilization and self-levelling

Once you have reached the place where you intend to operate, stop driving and start the descent of the outriggers, until automatic levelling has taken place. At the end of the process the tracks will be lifted off the ground.

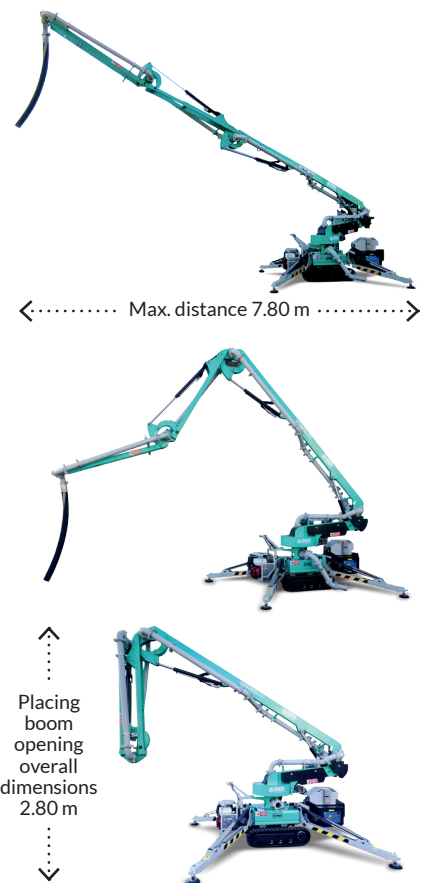
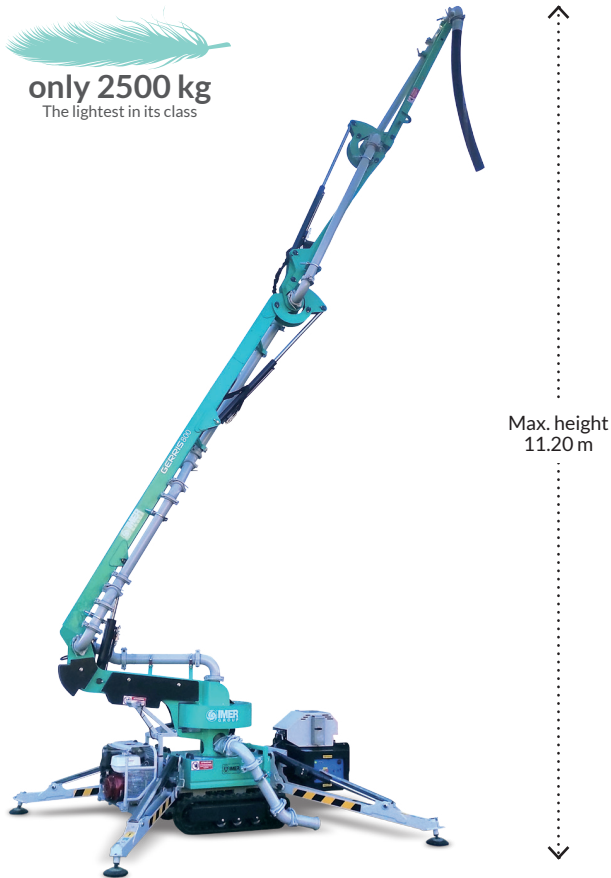
Opening

It begins with the lifting of the main boom up to a minimum height of 2.80 m, proceeding with the opening of the aerial part until the desired laying position is reached.

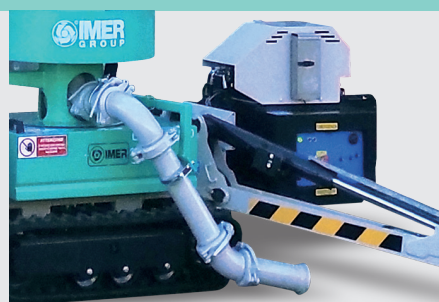
Ready to pump

Proceed with the connection of the pipes coming from the concrete pump by means of a rubber hose Ø 100 (4") directly to the collector pipe of the Gerris 800.

The pumping of the concrete is started and it can be laid where necessary by moving the distribution boom. To change the position of the machine, it is necessary to disconnect the pipes and return Gerris 800 to the transport position, to then proceed with a new positioning.



Robust and weatherproof wireless radio-control. It is light and easy to use, thanks to the multiple indications and the functional backlit display that indicates every single movement that is activated. Interchangeable rechargeable battery, with on-board charging support under key.



Didascalia di destra: Ø 100 (4") material hose connection manifold, easily removable for machine handling.

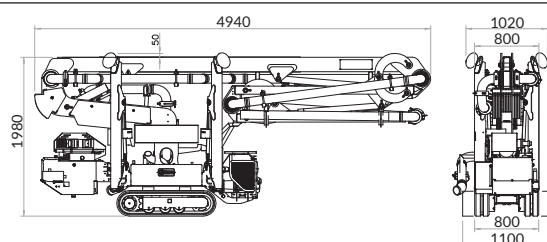
Standard Equipment

- Honda GX390 petrol hydraulic pump engine - 8.2 kW
- Auxiliary hydraulic pump electric motor 230V/50Hz - 2.2 kW
- Emergency manual hydraulic pump
- Wireless radio-control with backlit display
- Two rechargeable lithium batteries for radio-control
- Lithium battery charger integrated on the machine
- 12V maintenance battery charger installed on the machine
- Control panel on the machine
- Electronic hour counter
- Self-diagnosis and reporting anomalies of use
- Acoustic signaling of movement and abnormal conditions
- Double speed traction motors
- Rubber tracks, hydraulically expandable from 787 to 1050 mm
- Automatic outriggers levelling with electronic inclinometer
- Outrigger pads Ø 200 mm
- Automatic block valve on all hydraulic actuators
- Piping DN 100 (4")
- Rubber terminal tube DN 100 (4") 3m Length
- Removable header pipe for piping DN 100 (4")

Technical data

Max. height	m	11.20
Max. outreach	m	7.80
Depth of casting	m	5
Max. concrete grain size	mm	25 (1")
Overall dimensions stabilized machine	m	2.92 - 3.08
Max. traction speed	km/h	0 - 2,5
Gradeability	°	18
Turret rotation	°	355
Petrol engine	kW/rpm	8.2/3600
Auxiliary electric motor	V/kW	230/2.2
Starter battery	V/Ah	12/95 C5
Track pressure	kg/cmq	0.90
Max. outriggers load	daN	1930
Sound pressure level	dB(A)	104
Transport width	m	0.80
Transport length	m	4.90
Transport height	m	2
Machine weight	kg	2500

Data, descriptions and illustrations shown in the catalog are not binding for IMER International SpA, which reserves the right to make changes to the production without prior notice.

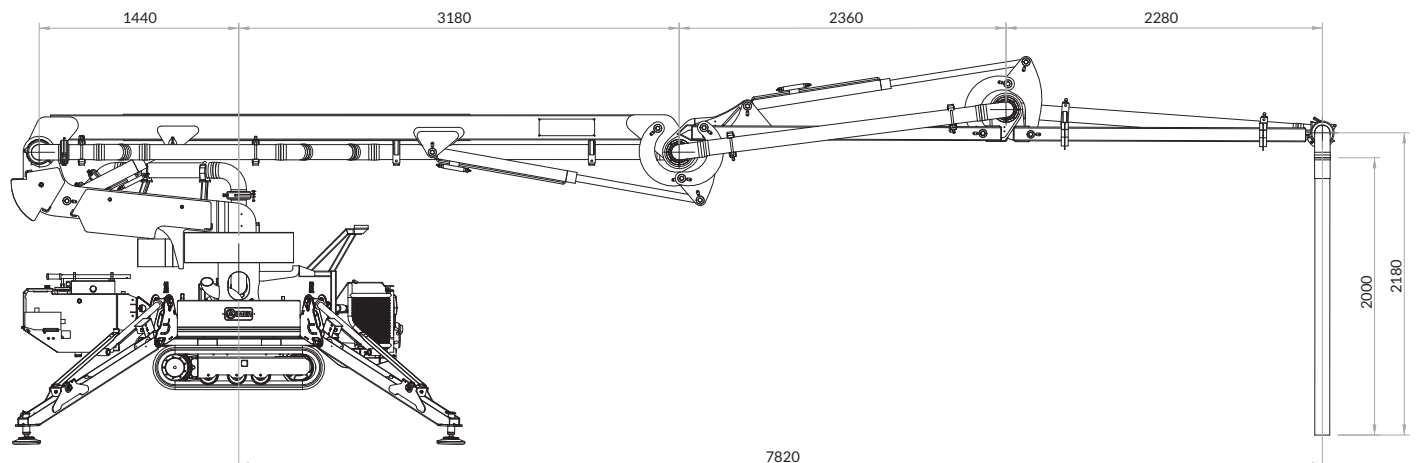
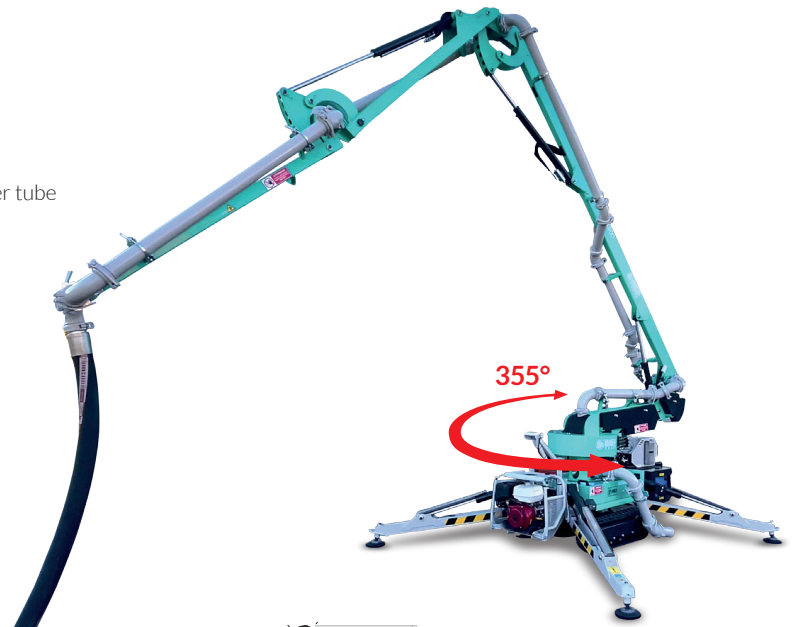
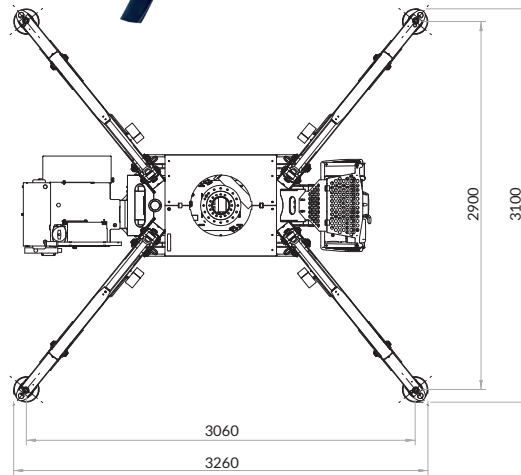
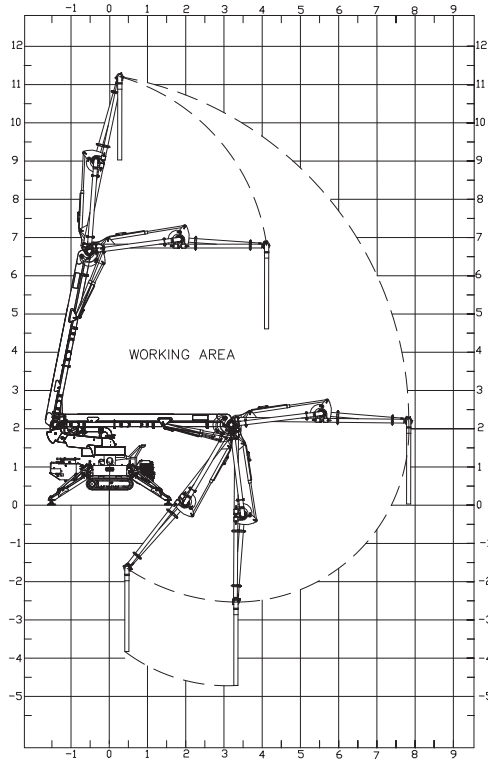


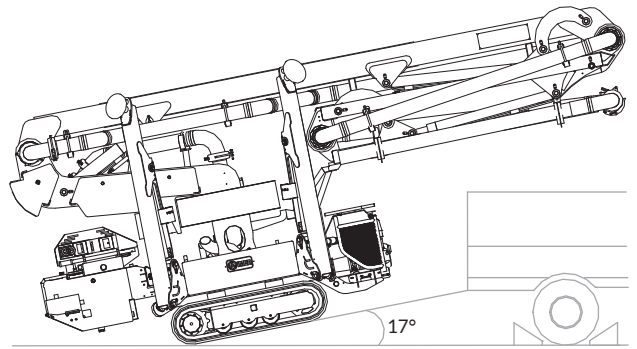
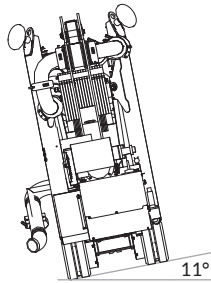
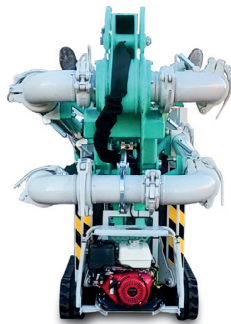
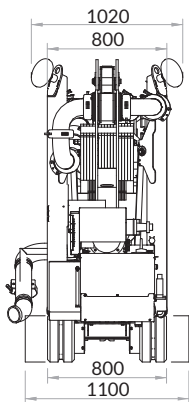
GERRIS 800

Crawler concrete placing boom

Work diagram

- Max. height served 11.20 m
- Max. depth of casting that can be reached, including terminal rubber tube
- Max. length of outreach 8 m
- Range of action 355°
- Overall outrigger footprint 3.1 x 3.26 m





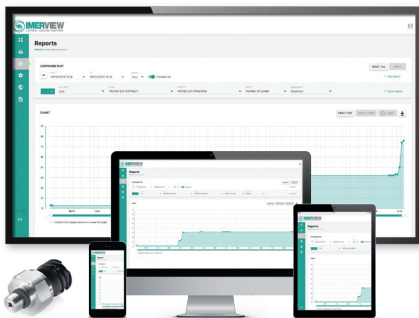
Tracked undercarriage can be extended to increase stability while driving.

Max. inclination while driving.

Accessories for customized setups **Gerris 800**



1129183



KIT IMERVIEW for Gerris 800

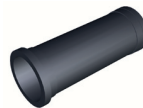
- Gps-Gsm electronic control unit, with integrated antenna
- Pressure sensor
- Web Dashboard access and Cloud storage
- 5 years of data traffic included
- Pre-delivery installation included
- ➔ Recommended for remote control:
 - Geofence with immediate warning "Machine out of perimeter"
 - Position and movement tracking
 - Battery status
 - Work environment temperature
 - Hydraulic system analysis
 - Direct connection to IMER Service

1129191



Lithium battery for radio-control

1129184



Material hose adapter from 4" to 4" 1/2

1129086



Non-marking rubber tracks

1107533



Material hose Ø 50 with camlock coupling - 10 m

1129069



Oversized outrigger pads (Ø 350 mm)

1107534

Material hose Ø 50 with camlock coupling - 20 m