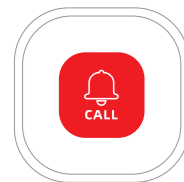
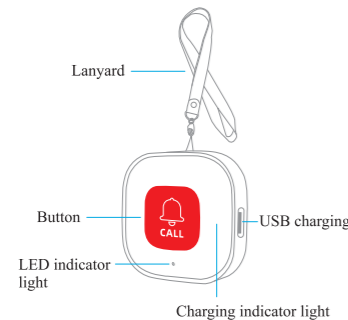


# Wi-Fi Emergency call button

## Instructions



### Appearance Introduction



### Preparation before connecting to the APP

#### Download APP



Tuya Smart

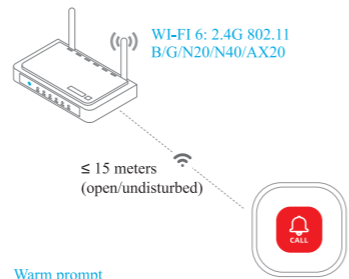


Smart Life

- Scan the QR code to download.
- Please search for "Tuya Smart (Smart Life)" in the application market to download.

The usage of the two apps is similar, just choose one of them.

### Configuration network considerations



#### Warm prompt

The distance varies with the environment. If the button is too far from the router, it will not be able to connect to the phone.

### Connect to mobile app

- 1 Connect your phone to Wi Fi (2.4G ) and turn on Bluetooth.



- 2 Enter the configuration network state.

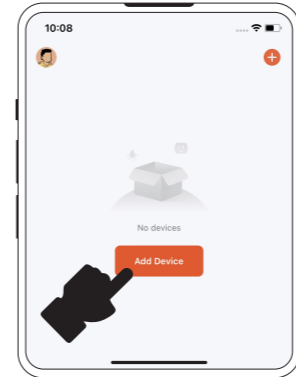


Press and hold the button for 10 seconds, and the LED indicator light will **slowly flash**.

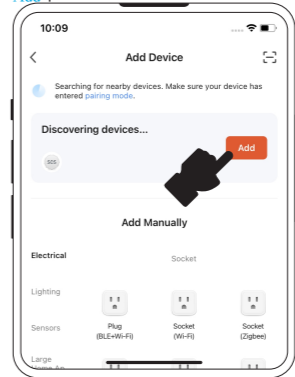
#### Warm prompt

The duration of configuring network status is 2 minutes.

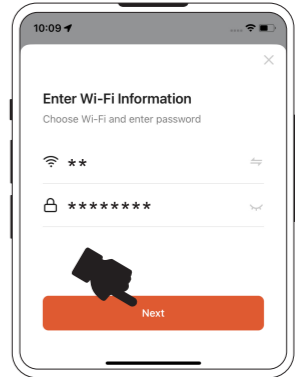
- 3 Open the app and click on "Add Device".



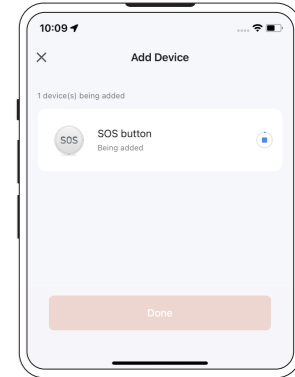
- 4 After automatically discovering the device, click "Add".



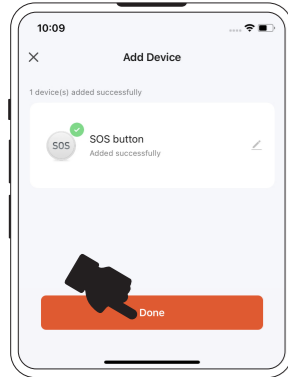
- 5 Enter Wi-Fi information and password.



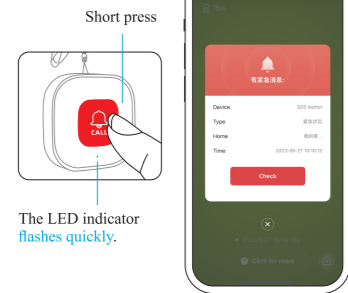
- 6 Waiting for successful connection.



- 7 Successfully connected, click "Done".

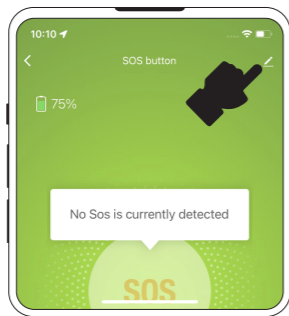


### Alarm push notification

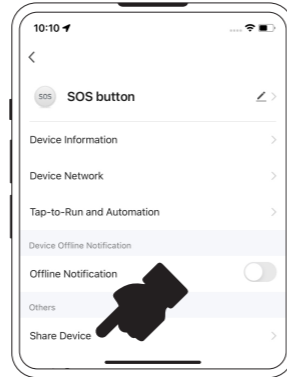


### Multi-person sharing

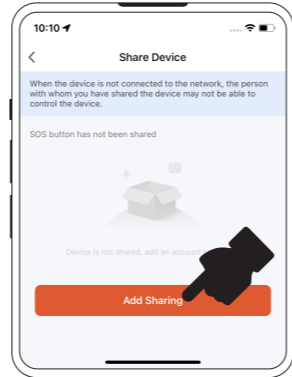
- 1 Click on the upper right corner



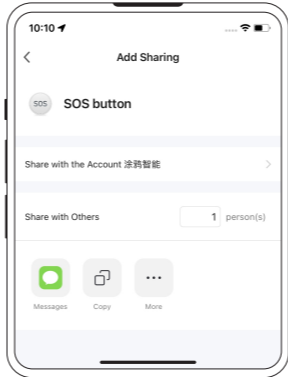
- 2 Click "Share Device".



- 3 Click "Add Sharing".



- 4 Choose a sharing method.



### Installation

#### Installation method

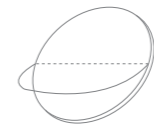


Double-sided tape can stick SOS Button to the bathroom / toilet / kitchen, etc.



Lanyard design that can be hung around the neck.

#### Double sided adhesive installation



Tear off one side of the double-side adhesive tape.



Paste on the back of the button.

### Q&A

**Q: After configuring the network, trigger the button. The LED indicator light is constantly flashing.**

**A:** (1) Because the button has exceeded the Wi-Fi range, the alarm was not successfully reported. Need to approach Wi-Fi and stop flashing after successful reporting.  
(2) Automatically stop after waiting for 2 minutes.

**Q: Unable to connect to mobile app?**

**A:** The button is too far away from the router. Please connect within 1-3 meters of the router.

### Technical specifications

Standby current: 0.1μA  
Average current: 12mA  
Internal battery: polymer battery 3.7V/400mAh  
Charging duration: ≤ 1 hour  
Wi-Fi 6: 2.4G 802.11 B/G/N20/N40/AX20

尺寸：500x60mm