

## Quick Mill Sorella Wifi Settings - How To Connect

Once the Quick Mill Sorella has been removed from its packaging and is resting on a level surface, make sure the reservoir is filled with soft, filtered water or is connected to a water line. Plug the machine into the power supply and turn on the on/off button on the front of the machine.

We will now connect to the Sorella's wifi.

The wifi on the Sorella was designed to be accessed via a laptop or desktop computer, running off a Windows or Mac OS. We recommend using a laptop or desktop to access it as it is not always accessible via a smartphone or tablet.

Open up the wifi settings on your laptop or desktop and select QUICKMILL##.

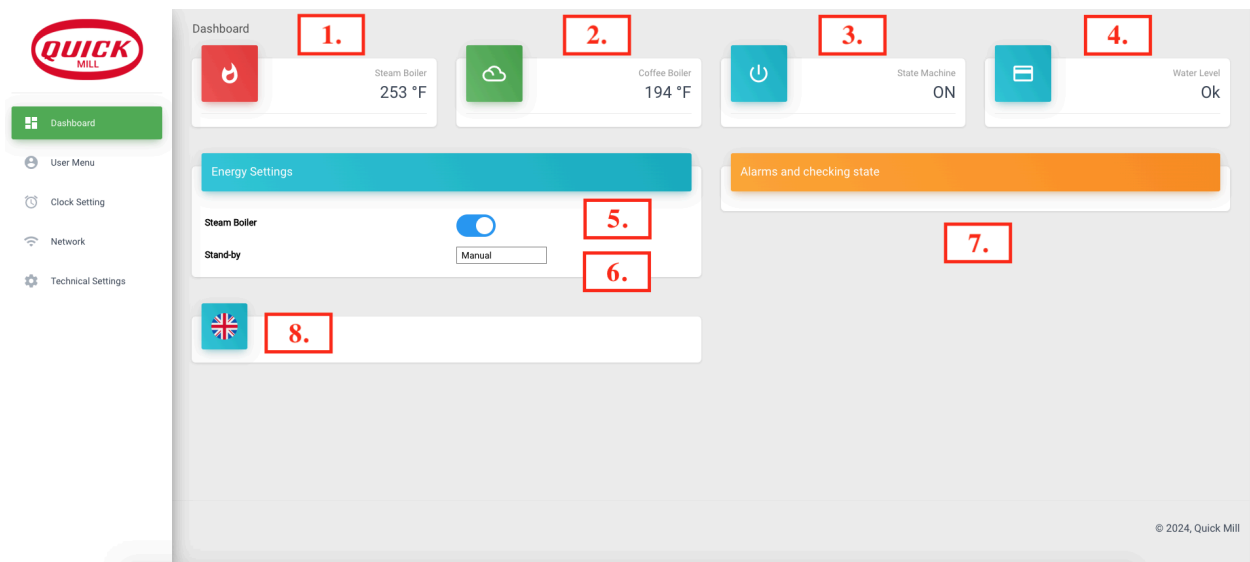
The default password for every Sorella is : QUICKMILLGL2B

When your device is showing its connected to that wifi signal, open the web browser on your device and enter in the following : 192.168.1.1

Press enter (or return) and this will open the Quick Mill wifi settings. Please note that only one device can be connected to the Quick Mill wifi settings at one time. When a device is connected to the Sorella, the illuminated power button will flash indicating a device is connected to it.

## Quick Mill Sorella Wifi Settings - Main Dashboard

Once connected to the wifi settings of the Sorella, you'll see the following dashboard page (minus the numbered annotations).



1. The current temperature of the steam boiler.
2. The current temperature of the brew boiler.
3. If the machine is currently on or off.
4. The water level of the machine.
5. Steam Boiler On/Off Toggle
6. Automatic/ECO/Manual Toggle
7. Error Message Display Chart
8. Language Toggle (English or Italian)

Numbers 1-4 are status indicators for the Sorella, they will tell you what the temperature of both boilers currently is at along with whether the machine is currently on or if it requires more water in reservoir mode.

Number 5 allows you to toggle the steam boiler on or off. If you are planning on just making straight shots of espresso, you can turn the steam boiler off to conserve energy.

Number 6 allows you to set the machine in Automatic, ECO or Manual Mode. Below are explanations of each mode.

1. Automatic - This mode is selected if you want the Sorella to operate on a seven day timer. We will get into programming this option later in this guide but if you want your machine to turn on and off by itself according to a set timed schedule, you'll want to put it in Automatic mode.
2. ECO - This mode is selected if you want your machine to be powered on all of the time but want the boilers to power down to a set temperature after a certain amount of inactivity to save on energy. In ECO Mode, when the brew lever is raised and lowered, the machine will heat back up to full temperature. Once again we'll explore this feature later in the guide.
3. Manual - This mode is selected if you simply want to manually turn the machine on when you need it and turn it off accordingly when you are done using it for the day.

NOTE : Machine modes cannot be combined, for example you cannot set the machine in Manual and also want the steam or brew boiler to power down after a set amount of time.

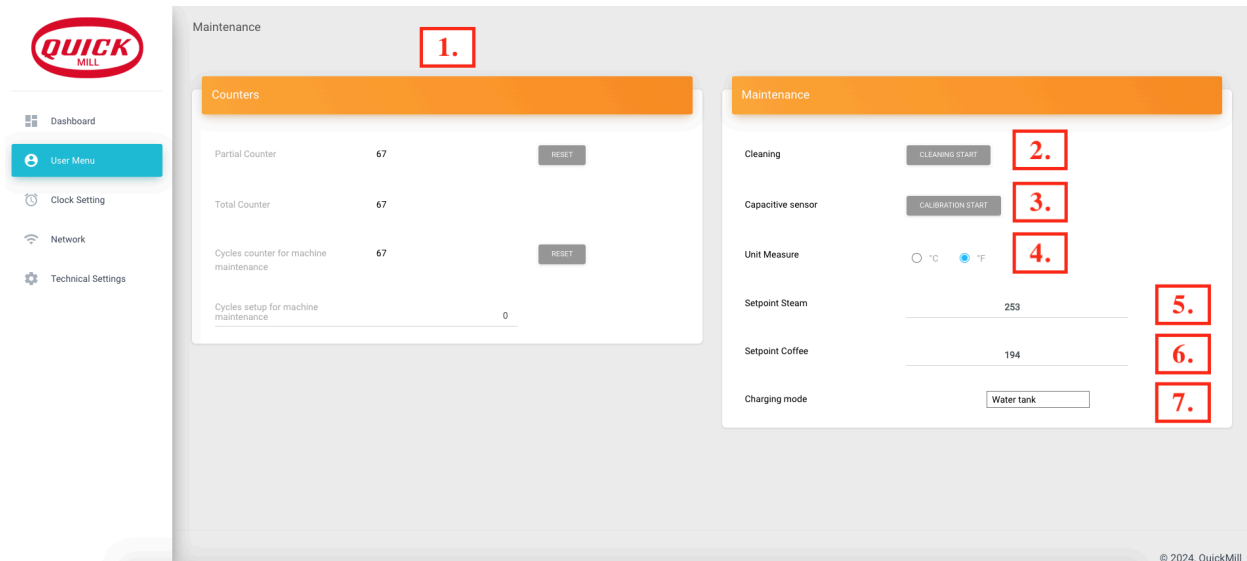
Number 7 will display any error or maintenance messages that the Sorella has experienced during its usage, this is helpful if the machine ever needs to be serviced.

Number 8 allows you to switch between English or Italian on the dashboard.

On the left hand side of the main dashboard, take note that you will see the option tabs for User Menu, Clock Setting, Network and Technical Settings.

## Quick Mill Sorella Wifi Settings - User Menu

We will now explore the User Menu tab on the left hand side of the dashboard. Click the User Menu tab and you will see the following page (minus the numbered annotations).



1. Shot Counter Display
2. Cleaning/Backflushing Instructions
3. Reservoir Calibration
4. Celsius/Fahrenheit Toggle
5. Steam Temperature Set
6. Brew Temperature Set
7. Water Tank (Reservoir) / Direct Water Connection Toggle

Number 1 displays how many shots have been pulled on your Quick Mill Sorella. It also allows you to set a designated amount of shots before the Sorella requires maintenance.

For example, if you pull 5 shots per day and want a reminder of when it's time to change out your shower screen and gasket (typically done every year), you'd set the "cycles set up for machine maintenance" field to read 1825 (5 shots per day x 365 days). When this number is reached, you'll see a "maintenance required" message appear on the previous dashboard screen to remind you it's time to change the gasket and shower screen.

Number 2 provides step by step instructions on how to backflush your Sorella. From our experience however it is easier to use the standard instructions on page 10-11 of the Quick Mill Sorella user manual found on [chriscoffee.com](http://chriscoffee.com).

Number 3 allows you to calibrate your empty reservoir if it is ever required. Before every Sorella ships from Chris' Coffee, our service technicians will perform a bench test where this calibration is done for you. If a recalibration is ever needed however, this option is what you would need to select. Instructions on how to calibrate an empty reservoir can be found on page 21 of the Quick Mill Sorella manual found on [chriscoffee.com](http://chriscoffee.com).

Number 4 allows you to switch between having the machine display in Celsius or in Fahrenheit.

Number 5 lets you set your steam boiler temperature.

Number 6 lets you set your brew boiler temperature.

**NOTE:** The Sorella was programmed in Italy under the assumption that it would display primarily in Celsius mode. If you choose to use the machine in Fahrenheit mode, when programming your brew and steam temperatures the number you enter in the User Menu will not be exactly what the machine will display and brew/steam at. This is **not** a malfunction. This is due to the rounding process in converting Celsius to Fahrenheit. Other machines such as the Rocket R58 Cinquantotto and the La Marzocco Linea Mini have identical temperature programming.

Please refer to the chart below to program your desired temperature in Fahrenheit.

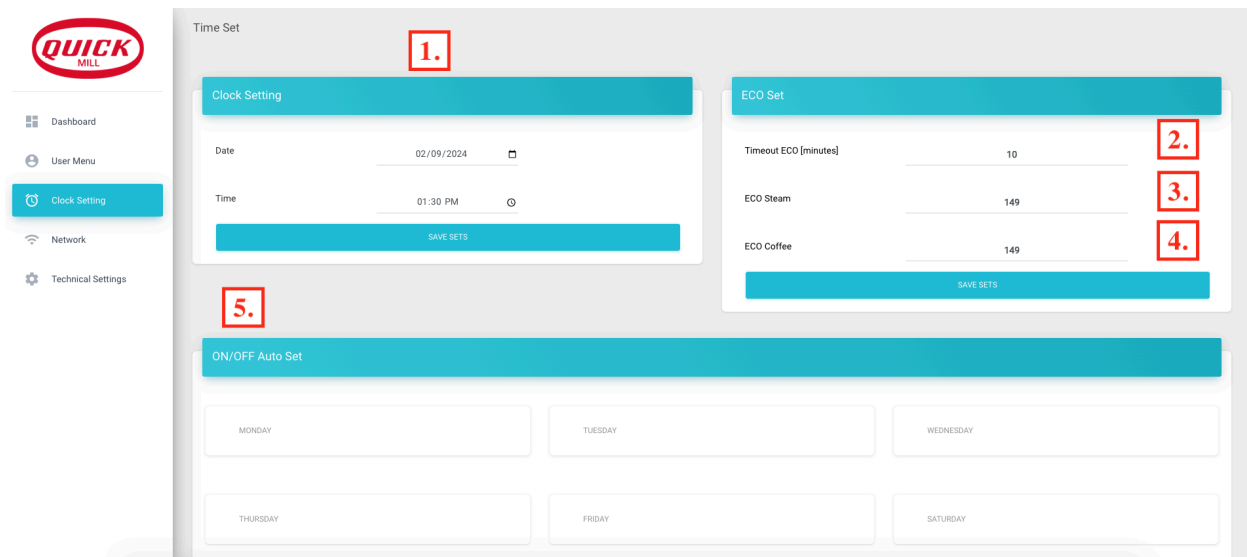
°F Entered In User Menu	°F Sorella Will Display/Brew At
195 °F	194 °F
196 °F	195 °F
197 °F	195 °F
198 °F	197 °F
199 °F	197 °F
200 °F	199 °F
201 °F	199 °F
202 °F	201 °F
203 °F	203 °F
204 °F	203 °F
205 °F	204 °F

To save your brew or steam temperature in the User Menu, simply enter in the desired number from the chart above and click on any blank spot on the screen to save it.

Number 7 allows you to use the side-loading reservoir as the Sorella's water source or switch it to a direct plumb connection.

## Quick Mill Sorella Wifi Settings - Clock Setting

We will now explore how to program the date, time, ECO mode and built-in seven day time on the Quick Mill Sorella. Click the Clock Setting tab and you will see the following page (minus the numbered annotations).



1. Date and Time Settings
2. Timer For ECO Mode
3. ECO Mode - Steam Temperature Programming
4. ECO Mode - Brew Temperature Programming
5. Seven Day Timer Programming

Number 1 allows you to program the date and time displayed on the machine. You will need to program the date/time if you want to use the seven day timed schedule feature on the Sorella. Once you have the date and time set, click on “Save Sets” to save your settings.

Number 2 allows you to program how long the machine needs to be idle before ECO mode is activated.

Number 3 lets you set the temperature the steam boiler will lower to when the machine is in ECO mode.

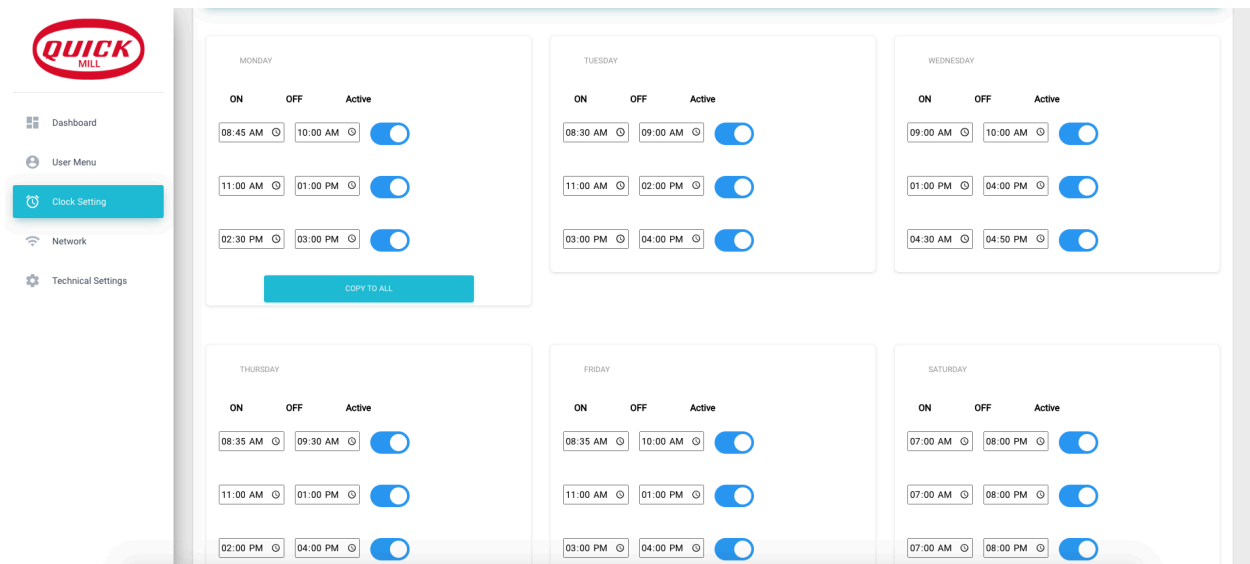
Number 4 lets you set the temperature the brew boiler will lower to when the machine is in ECO mode.

Once you have your ECO mode parameters set, click on “Save Sets” to save your settings.

**NOTE:** If you want to activate the ECO mode settings, you will need to save your settings as described above as well as return to the Main Dashboard tab and switch to the “ECO” option in annotation #6.

Number 5 lets you program the Sorella’s built in seven day timer. You will need to make sure that the date and time have already been programmed before you set up a schedule for your machine.

Click on the day you would like to program and you’ll see the days expand as shown in the picture below.



Every day gives you the ability to set up to 3 “on” times and 3 “off” times. You do not have to use all 3 “on” and “off” times, if you only want your machine to turn on at say 7:00AM and then off again at 7:00PM, simply program the first row in each day and deactivate the other 2 time settings by clicking on the slider. The slider will turn gray and deactivate the other times. When you are happy with your on/off schedule, simply click on any blank spot on the screen to save the setting and move onto the next day.

The Sorella also gives you the option to copy your timer settings on Monday to all days by clicking on the blue “Copy To All” button once Monday’s schedule is set.

**NOTE:** To use the seven day timer on the Sorella, once the times are programmed and saved you will need to return to the Main Dashboard tab and switch to the “Automatic” option in annotation #6.

When the machine is set up in Automatic mode with the seven day timer programmed, you will still be able to wake the machine up during the scheduled “off” time by lifting the brew lever and lowering it back down. This will activate the machine and the Sorella will start to heat up again.

If the Sorella is manually turned on before its scheduled “on” time, it will not turn off again until its next scheduled “off” time.

The PID screen on the Quick Mill Sorella has a built-in screen saver that will automatically display the Quick Mill logo after 15 minutes of inactivity. This screen saver cannot be turned off.

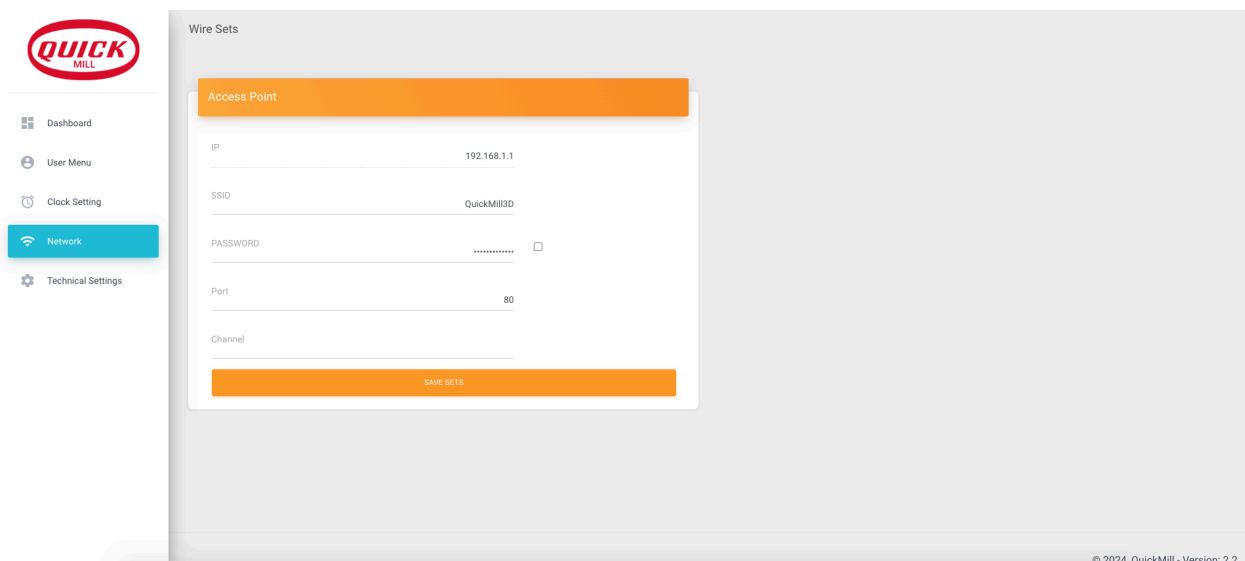
After 30 minutes of inactivity, regardless of whether the machine is set up in automatic, ECO or manual mode, the PID screen will turn black. This is **not** a malfunction. The machine still has all saved timed and temperature settings when the PID screen is black.

For example if the machine is set to turn on at 7AM and turn off at 8AM in Automatic mode, at 7:15AM the screen saver will display if the machine has not been operated. At 7:30AM, the PID screen will turn black if the machine has still not been operated but the machine will still be on and fully heated. At 8AM, if still not yet operated, the screen will remain black but the machine will turn itself off at that time as scheduled.

The easiest way to tell if the machine is on or off when the screen is black is to check your steam pressure gauge (unless you have manually turned the steam boiler off on the Main Dashboard).

## Quick Mill Sorella Wifi Settings - Network

We will now take a look at the Network settings on the Sorella. Click the Network tab and you will see the following page.



This screen allows you to change the network name (SSID), the wifi log-in password along with the port and channel. It is **not** recommended to adjust any of these settings however as there is not an easy way to retrieve a password if it is forgotten.

## **Quick Mill Sorella Wifi Settings - Technical Settings**

The final tab on the left, labeled as “Technical Settings”, is designed only to be accessed by Quick Mill technicians. The login name and password are not and will not be available.

If you have any further questions at all in regards to the Quick Mill Sorella, please do not hesitate to reach out to Chris' Coffee directly at [support@chriscoffee.com](mailto:support@chriscoffee.com) or give us a call at 518-452-5995 (Monday - Friday, 9AM to 5PM EST). We are always happy to help any way that we can and hope you thoroughly enjoy your Quick Mill Sorella.