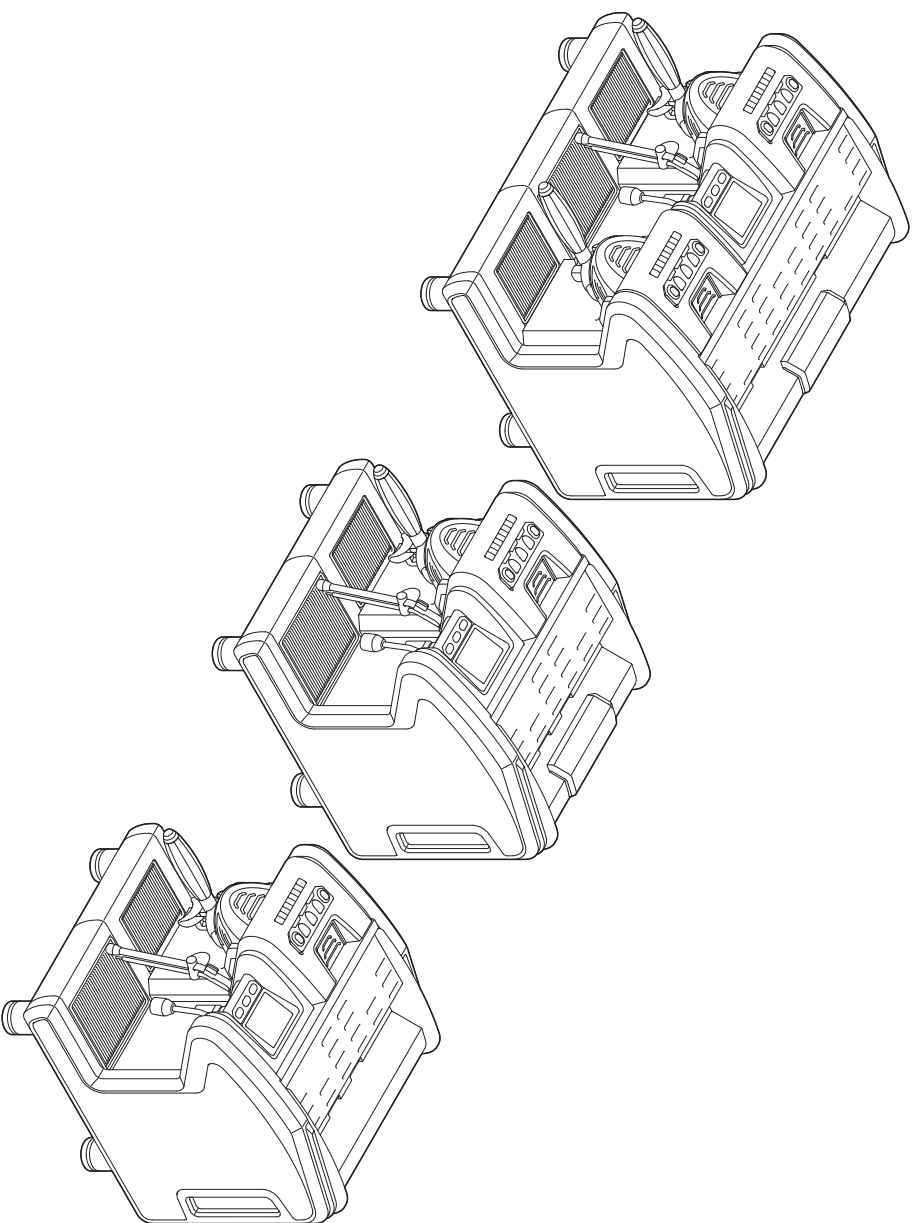


**laSpaziale**

espresso coffee machines



MNR 001-S11  
Rev. 00 Ed. 10/2022

**S11**

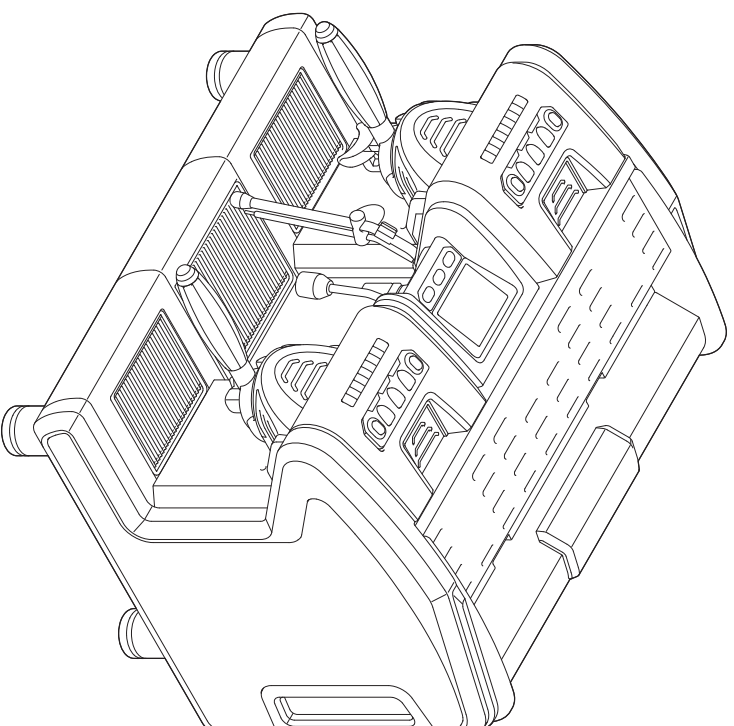
MELODIA - MINIBRIO - BRIO

CATALOGO PARTI DI RICAMBIO • SPARE PARTS LIST



**laSpaziale**

espresso coffee machines

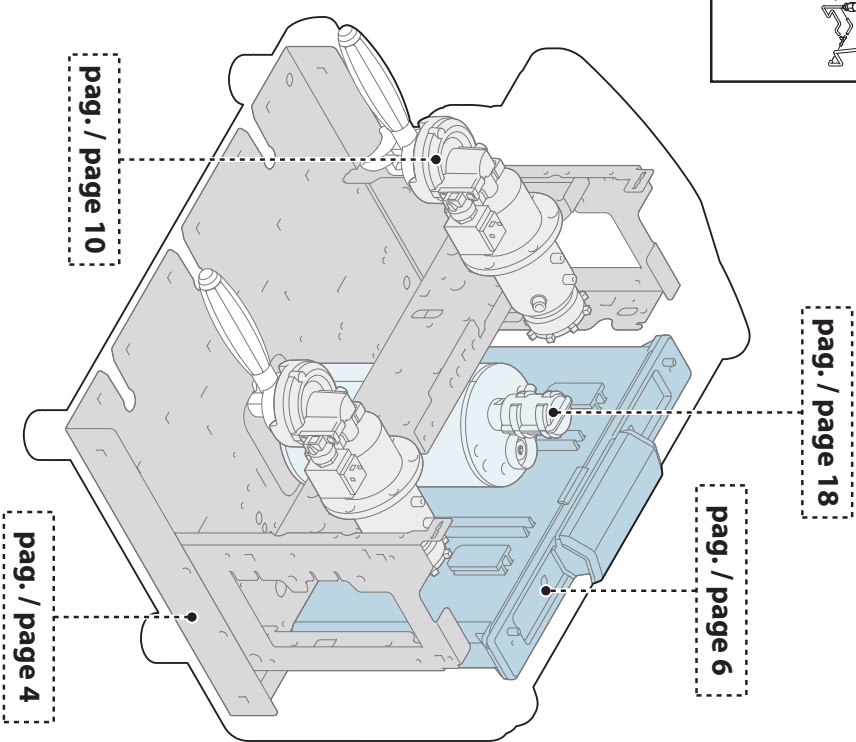
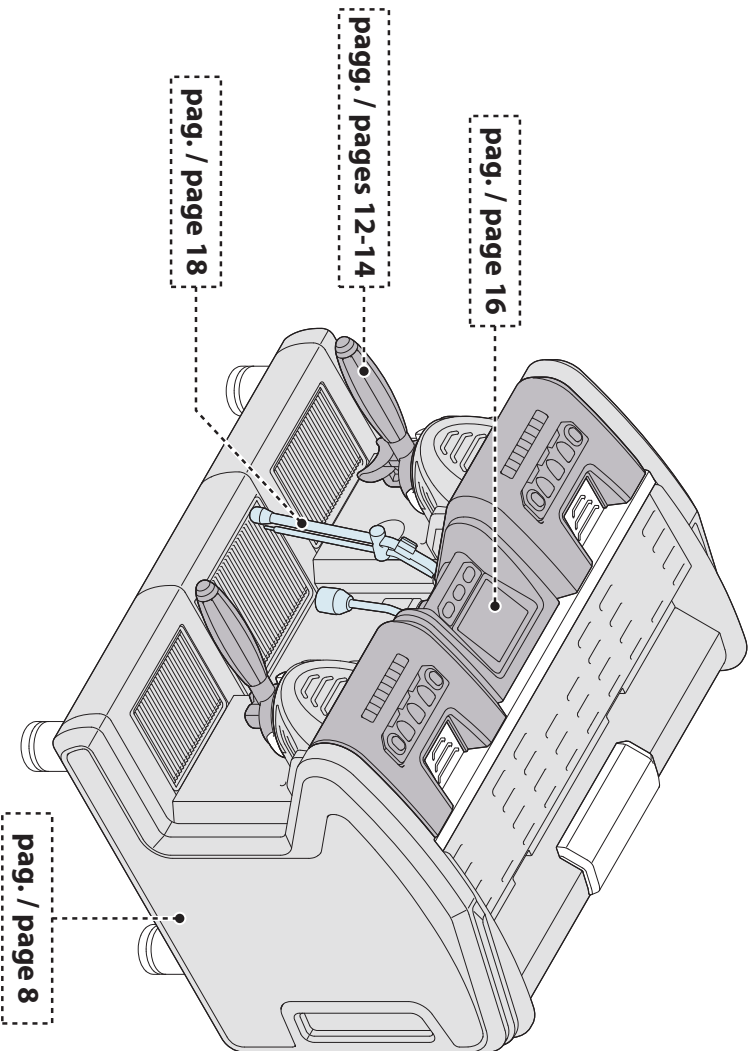
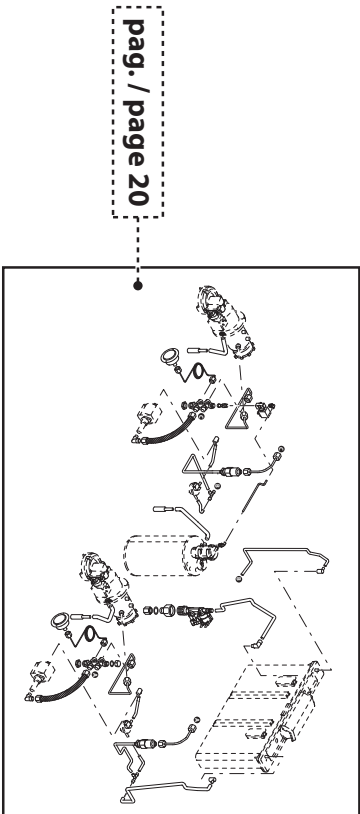


**S11**  
MELODIA

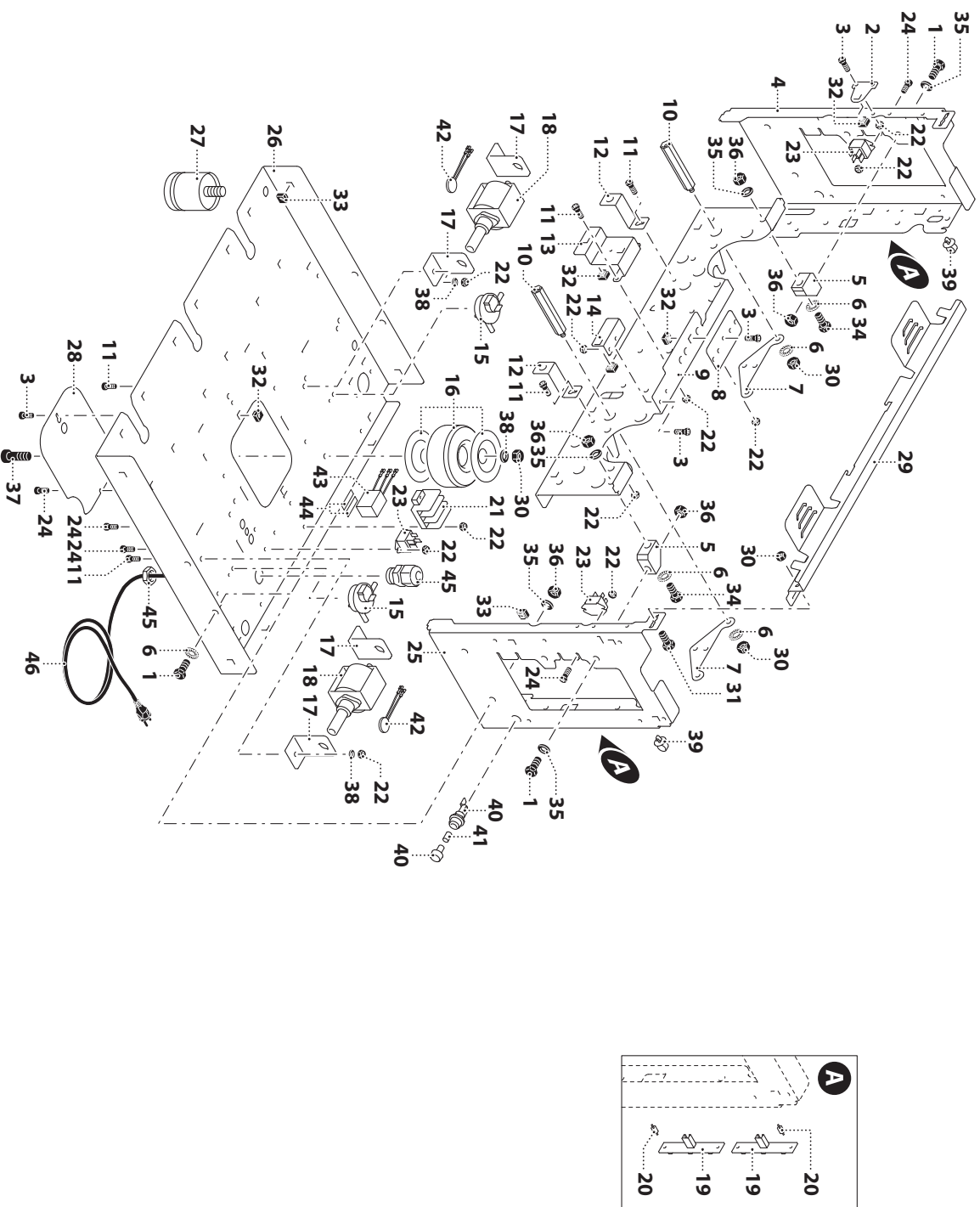
CATALOGO PARTI DI RICAMBIO • SPARE PARTS LIST







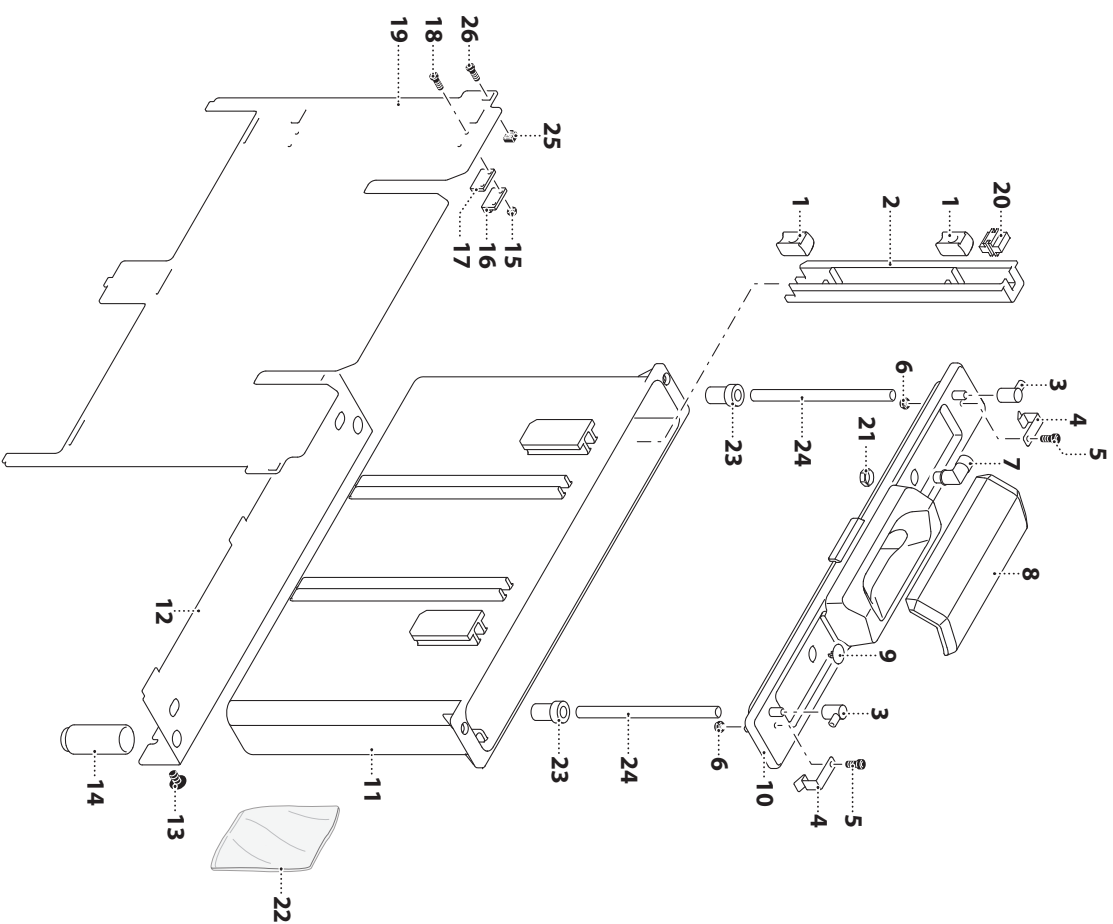
## STRUTTURA DI BASE • BASE STRUCTURE



### STRUTTURA DI BASE • BASE STRUCTURE

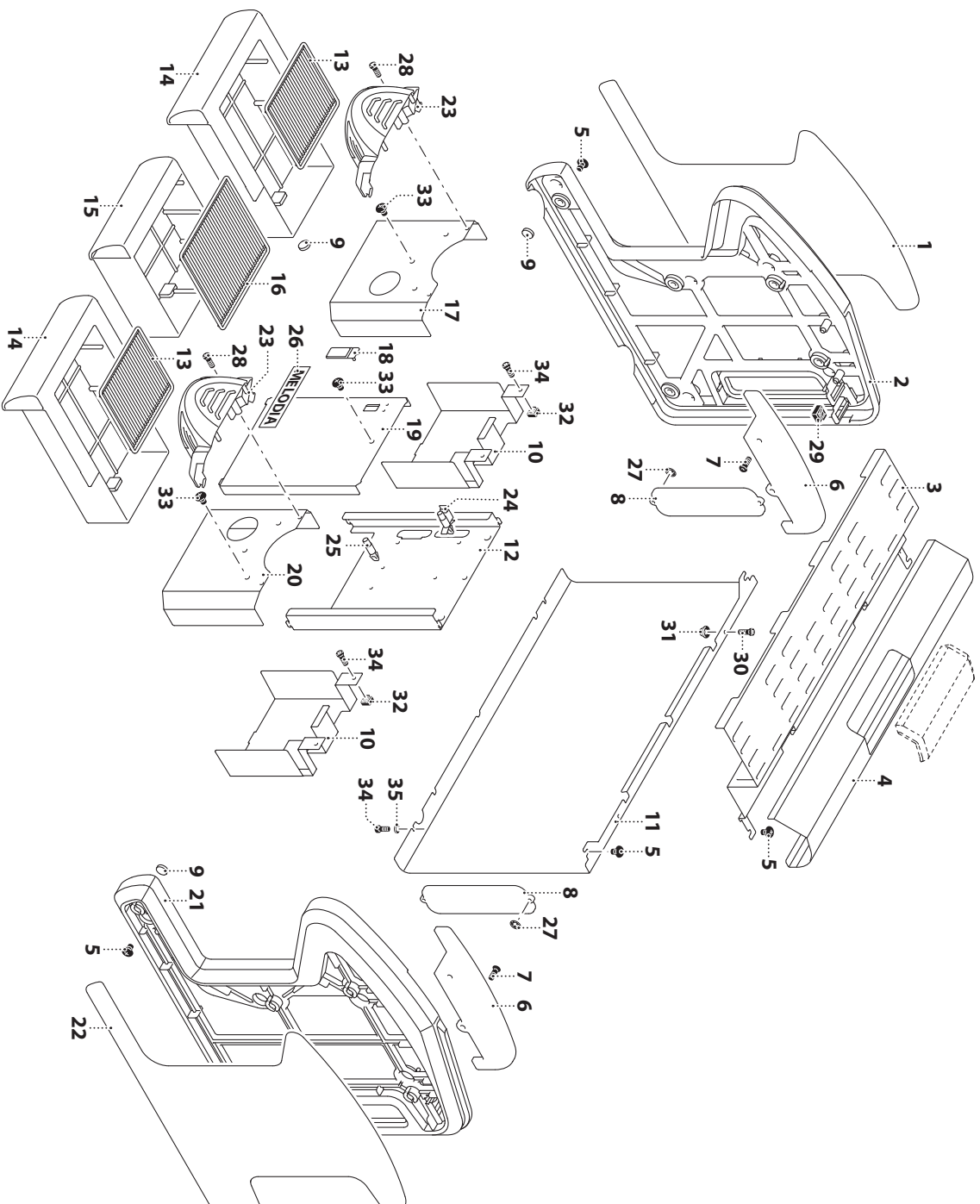
N°	COD.	DESCRIZIONE	DESCRIPTION	N°	COD.	DESCRIZIONE	DESCRIPTION
1	1747	VITE TESTA ESAGONALE 8 X 20 ZINCATO	GALVANIZED HEXAGONAL SCREW 8X20	43	14192	SERIE FILTRI CABLATTI (NO UL)	SERIES OF CABLED FILTERS (NO UL)
2	15241	PIASTRINA FISSAGGIO MODULO ABS SX	ABS MODULE	44	10012	BIADESIVO 3M VHB HT2	BI-ADHESIVE TAPE 3M VHB HT2
3	2333	VITE TESTA CILINDRICA A GROOVE 4X12	HEAD CAP SCREW TC 4X12	45	7521	PRESSACAVO + GHIERA PG13.5 NERO	BLACK CABLE GLAND + RING NUT PG13.5
4	15238	FLANCO INTERNO SX	LEFT INSIDE PANEL	46	12962	CAVO ALIMENTAZIONE (STD)	SUPPLY CABLE (STD)
5	9813	ANGOLARI PER BASAMENTO	BASE ANGLE	46	7898	CAVO ALIM SP1MA 125V 20°	CABLE+PLUG 125V 20°
6	2282	RONDELLA DENTELLATA DIAMETRO 8	TOOTH WASHER Ø 8 MM				
7	15240	PIASTRA COLONNE SOTTOGRUPPO	SUPPORT PLATE				
8	15245	PIASTRA INOX SUPP. EV.H2O/VAP	INOX PLATE SUPPORT FOR EV.H2O/VAP				
9	15237	FASCIONE	HOLDER PANEL				
10	12896	PERNO M6	PIN M6				
11	5685	VITE TE FLANGIATA 5 X 12	FLANGED HEXAGONAL HEAD SCREW 5X12 GALVANIZED				
12	15247	STATERA SUPPORTO MANOMETRO	PRESSURE GAUGE SUPPORT BRACKET				
13	15243	PIASTRINA FISSAGGIO MODULO DISPLAY	DISPLAY MODULE SUPPORT				
14	15242	PIASTRINA FISSAGGIO MODULO ABS DX	ABS MODULE DX SUPPORT				
15	12925	CONTITTORE VOLUMETRICO	VOLUMETRIC FLOWMETER				
16	15431	TRASFORMATORE 230V/24-19VAC	TRANSFORMER 230V/24-19VAC				
16	15298	TRASFORMATORE 110-24-19V (UL)	TRANSFORMER 110-24-19V (UL)				
17	5464	SUPP. GOMMA L X POMPA VIBRAZIONE	RUBBER SUPPORT L X VIBRATION PUMP				
18	7640	POMPA 230V 50HZ 20 BAR	PUMP 230V 50HZ 20 BAR				
18	7639	POMPA 120V 60HZ 15 BAR	PUMP 120V 60HZ 15 BAR				
19	11850	CIRCUITO LED FIANCO	SIDE LED CIRCUIT				
20	12514	DISTANZIALE CIRCUITO LED	LED CIRCUIT SPACER				
21	10026	MORSETTERA 3 POLI	3-POLES TERMINAL BOARD				
22	5686	DADO FLANGIATO M4 4.8 ZINCATO	GALVANIZED FLANGE NUT M4 4.8				
23	9866	RELE STATICO	STATIC RELAY				
24	4336	VITE TC A GROVE 4 X 16	CROSSED HEAD SCREW TC 4X16				
25	15235	FIANCO INTERNO DX	RIGHT INSIDE PANEL				
26	12826	BASE	BASE				
27	10255	PIEDINO H80 INOX REGOLABILE	STAINLESS STEEL H80 ADJUSTABLE FOOT				
28	12831	PIASTRA PROTEZIONE RESISTENZA BOILER	BOILER GUARD PLATE				
29	14005	TRAVERSA FISSAGGIO MODULO	PANEL MODULE FIXING TRAVERSE				
30	815	DADO ESAGONALE M6	HEX NUT M6				
31	10950	PERNO M6X20	M6X20 PIN				
32	9887	DADO IN GABBIA M4	CAGE NUT M4				
33	1749	DADO A GABBIA M6	CAGE NUT M6				
34	1928	VITE TESTA ESAGONALE 8 X 25 ZINCATO	GALVANIZED HEXAGONAL SCREW 8X25				
35	416	RONDELLA PIANA DIAMETRO 8 ZINCATO	GALVANIZED FLAT WASHER D 8				
36	1744	DADO ESAGONALE M8	HEX NUT M8				
37	13046	VITE TC 6X50	CROSSED HEAD SCREW TC 6X50				
38	816	RONDELLA D 6	WASHER D 6				
39	12879	FERRMACAVO D 8	D 8 CABLE HOLDER				
40	13349	PORTAFUSIBILE 30A 250V (UL)	FUSE HOLDER 30A 250V (UL)				
41	9144	FUSIBILE 6.3X32 20A UL	FUSE 6.3X32 20A UL				
42	10822	PROTETTI. TERMICO POMPA/VIBR.	VIBR. PUMP THERMAL PROT.				

### SERBATOIO • TANK



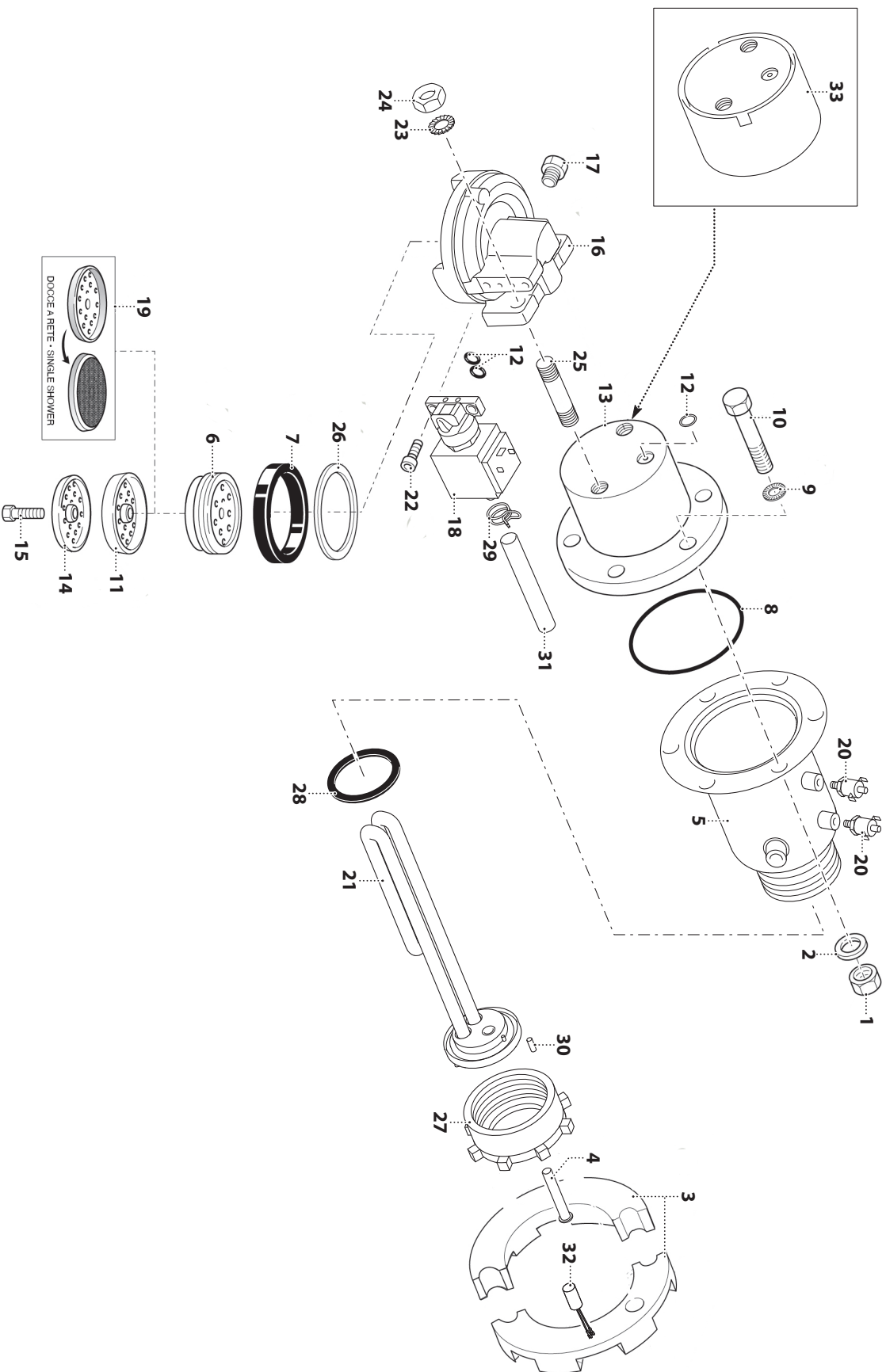


## CARROZZERIA • BODY



N°	COD.	DESCRIZIONE	DESCRIPTION
1	15425	INSERTO INOX SX PER FIANCO ESTERNO	LH STAINLESS STEEL INSERT FOR EXTERNAL SIDE
2	15417	FIANCO ESTERNO ABS SX BIANCO	ABS EXTERNAL LEFT SIDE PANEL WHITE
2	15420	FIANCO ESTERNO ABS SX NERO	ABS EXTERNAL LEFT SIDE PANEL BLACK
3	15447	GRIGLIA APPOGGIATRAZZE SUPERIORE	UPPER CUP HOLDER GRID
4	15345	COBERTURA POSTERIORE SUPERIORE	REAR UPPER COVERING
5	8022	VITE TBL KOMBI M6X10 ZINCATO	GALVANIZED SCREW TBL KOMBI M6X10
6	12860	VETRINA LATERALE	SIDE GLASS
7	1937	VITE TC A CROCE AUTOFILLETTANTE 3,9 X 9,5	SELF-TAPPING SCREW TC 3.9 X 9.5
8	12861	VETRINO ISPEZIONE SERBATOIO ACQUA	WATER TANK INSPECTION GLASS
9	12886	MAGNETE NEODIMIO CILINDRICO D8	CYLINDRICAL NEODYMIUM MAGNET D.8
10	15244	PROTEZIONE VANO BACINELLA	TRAY GUARD
11	15344	PANNELLO POSTERIORE INOX	STAINLESS STEEL REAR PANEL
12	12830	PIASTRA SUPPORTO CENTRALINA POTENZA	POWER CONTROL UNIT SUPPORT PLATE
13	12838	GRIGLIA BACINELLA CAFFE'	COFFEE DRIP TRAY GRID
14	12862	BACINELLA CAFFE'	DRIP TRAY COFFEE
15	12864	BACINELLA SERVIZI	DRIP TRAY
16	12839	GRIGLIA BACINELLA SERVIZI	HOT WATER DRIP TRAY GRID
17	15238	PIASTRA INOX SOTTOGRUPPO	STAINLESS SUPPORT PLATE
18	11511	TAPPO CONNETTORE USB	USB PLUG COVER
19	15248	PROTEZIONE CENTRALINA POTENZA	POWER CONTROL UNIT PROTECTION
20	15239	PIASTRA INOX SOTTOGRUPPO DX	HOT WATER SV SUPPORT STAINLESS STEEL PLATE
21	15419	FIANCO ESTERNO ABS DX NERO	ABS EXTERNAL RIGHT SIDE PANEL BLACK
21	15418	FIANCO ESTERNO ABS DX BIANCO	ABS RIGHT SIDE PANEL WHITE
22	15424	INSERTO INOX DX PER FIANCO ESTERNO	RH STAINLESS STEEL INSERT FOR EXTERNAL SIDE
23	15279	COBERTURA GRUPPO	GROUP CAP
24	9868	DISTANZIATORE CIRCUITO TYPEA	CIRCUIT SPACER TYPEA
25	12947	DISTANZIALE APPOGGIO CENTRALINA	SUPPORT CONTROL UNIT SPACER
26	15627	ADESIVO MELODIA	MELODIA LABEL
27	1243	ANELLO FISSAGGIO PIASTRINA VETRO LIVELLO	FASTENING RING FOR LEVEL GLASS PLATE
28	8823	VITE TC M3X10	SCREW TC M3X10
29	1749	DADO A GABBIA M6	CAGE NUT M6
30	669	VITE TESTA CIL. CAVA ESAGONALE 4X10 INOX	STAINLESS STEEL SCREW 4X10TCCE
31	5686	DADO FLANGIATO M4 4,8 ZINCATO	GALVANIZED FLANGE NUT M4 4.8
32	9887	DADO IN GABBIA M4	CAGE NUT M4
33	15632	VITE	SCREW
34	2333	VITE TESTA CILINDRICA A CROCE 4X12	HEAD CAP SCREW TC 4X12
35	1849	RONDELLA	WASHER

### GRUPPO EROGATORE • DELIVERY GROUP



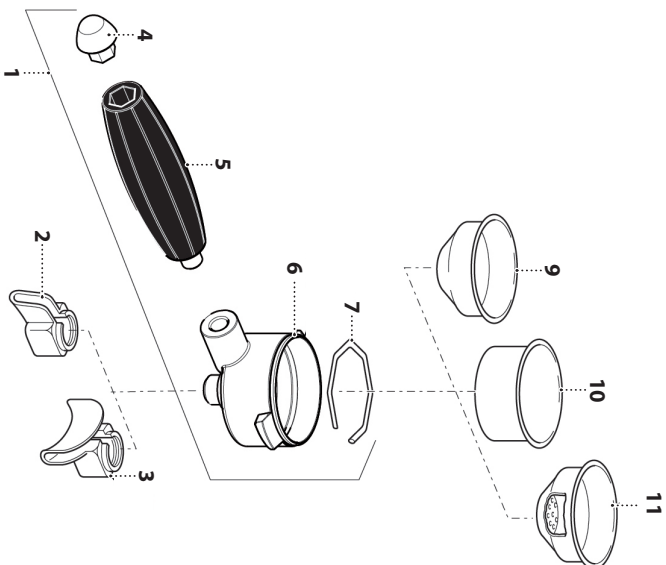


### GRUPPO EROGATORE • DELIVERY GROUP

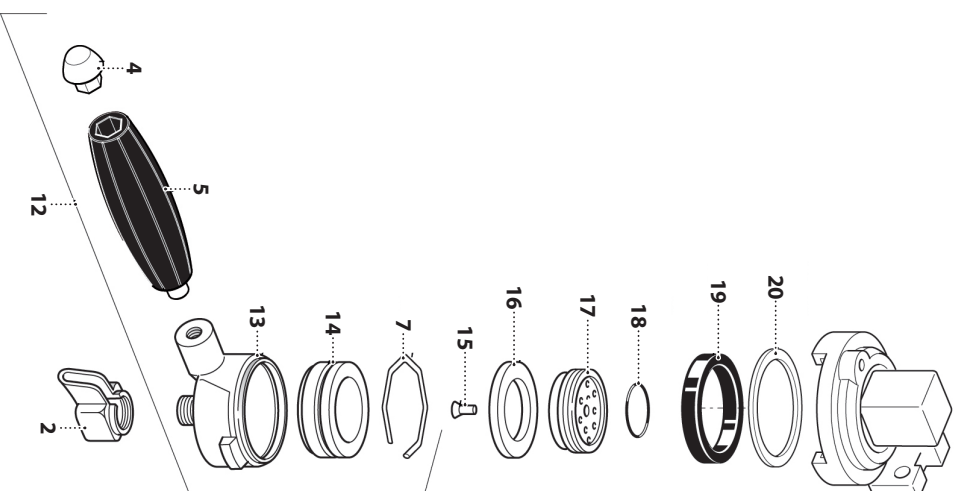
N°	COO.	DESCRIZIONE	DESCRIPTION
1	1744	DADO ESAGONALE M8	HEX NUT M8
2	416	RONDELLA PIANA DIAMETRO 8 ZINCATO	GALVANIZED FLAT WASHER D8
3	407	SEMANELLO ALLUMINIO	ALUMINIUM HALF-RING
4	7483T	TUBO POZZETTO SONDA	DRAIN PIPE FOR PROBE
5	15246T	CALDAIETTA CAFFE' T.E.A.	BOILER COFFE' T.E.A.
6	1941	PORTADOCCHETTE IN OTTONE H=11	BRASS SHOWER HOLDER H=11
6	641	PORTA DOCCETTA OTTONE H=13 (STD)	SHOWERHEAD HOLDER H=13 (STD)
6	1942	PORTADOCCHETTE IN OTTONE H=15 (ALTO)	BRASS SHOWER HOLDER H=15 (HIGH)
7	1939	GUARNIZIONE SOTTOCOPPA SPESSORE 6,3 MM (STD)	GROUP HEAD GASKET THICK 6.3 MM (STD)
7	1968	GUARNIZIONE SOTTOCOPPA SPESSORE 6,7 MM	GROUP HEAD GASKET THICK 6.7 MM
8	2417	GUARNIZIONE OR GRUPPO VITON	GROUP VITON O-RING
9	417	ROSETTA DENTELLATA DIAMETRO 8	TOOTH WASHER EXT. D8
10	418	VITE TESTA ESAGONALE 8X45 ZINCATO	GALVANIZED HEX SCREW 8X45
11	2908	DOCCETTA	UPPER SHOWER
12	625	GUARNIZIONE OR 105 VITON MAGGIORATA	STRONGER O-RING 105 VITON
13	1222T	CAMPANA GRUPPO TEATA	GROUP HEAD BELL (T.E.A.)
14	2909	CONTRODOCCIA	LOWER SHOWER
15	643	VITE TE 5X25 INOX	STAINLESS STEEL HEX 5X25 SCREW
16	15271	CORPO GRUPPO	GROUP BODY
17	490	TAPPO 1/8" M	PLUG 1/8 M
18	15272	ELETTROVALVOLOLA 3 VIE 24 VAC 90°	3-WAYS SOLENOID VALVE 24VAC 90°
19	2578	DOCCETTA A RETE	NET SHOWER
20	6687	TERMOSTATO SICUREZZA X PROFIELE	SAFETY THERMOSTAT
21	7201	RESISTENZA 230V./1250W	HEATING ELEMENT 230V./1250W
21	7476	RESISTENZA 110V/800W	HEATING ELEMENT 110V/800W
22	15293	VITE M5X14	SCREW M5X14
23	2283	RONDELLA DENTELLATA DIAMETRO 12	TOOTH WASHER Ø 12 MM
24	1219	DADO M10X1,25	M10X1,25 NUT
25	1218	PRIGONIERO 10 X 35	SCREW STUD 10 X 35
26	638	GUARNIZIONE SPESSORE 0,5 MM	0.5 MM GASKET
26	639	GUARNIZIONE SPESSORE 1 MM	1 MM GASKET
27	7387	GHIERA M52X1,5 PER SCAMBIATORE	RING NUT M52X1,5 FOR HEAT EXCHANGER
28	7418	GUARNIZIONE OR 2.131 FKM 70	O-RING 2.131 FKM 70
29	8351	MOLLA BIFILARE DIAMETRO 12	DOUBLE CLAMP D=12
30	11622	SPINA TEMP 2X6	TEMP. PIN 2X6
31	1377	TUBO SILICONE 7 X 1	SILICON HOSE 7 X 1
32	15299	SONDA TEMPERATURA CALDAIETTA CAFFE'	BOILER CAFFE' TEMPERATURE PROBE
33	15615	FASCIA COIBENTAZIONE CAMPANA GRUPPO	GROUP BELL INSULATION BAND

## PORTAFILTRO • PORTAFILTER

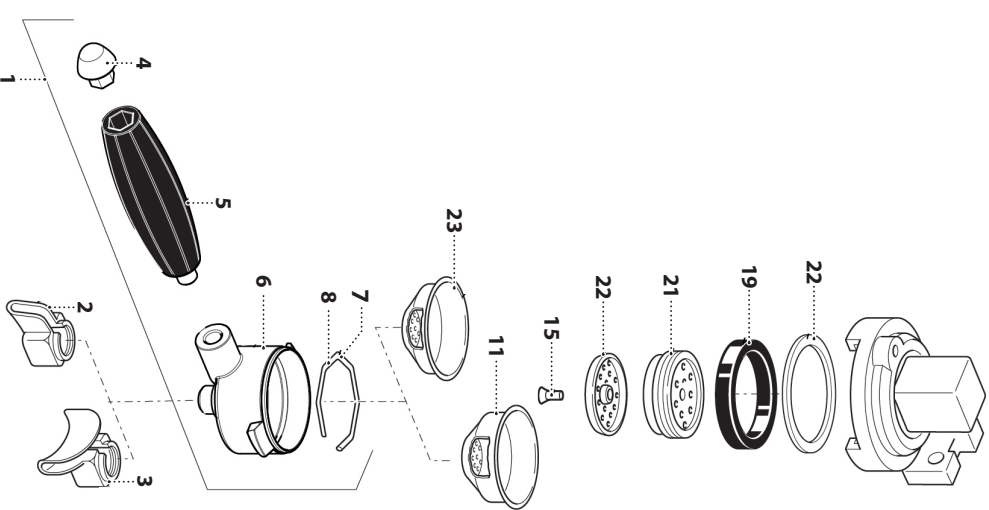
### PORTAFILTRO PORTAFILTER



### PORTAFILTRO PER CAPSULA F.A.P. F.A.P. CAPSULE PORTAFILTER



### PORTAFILTRO PER CIAUDA POD PORTAFILTER

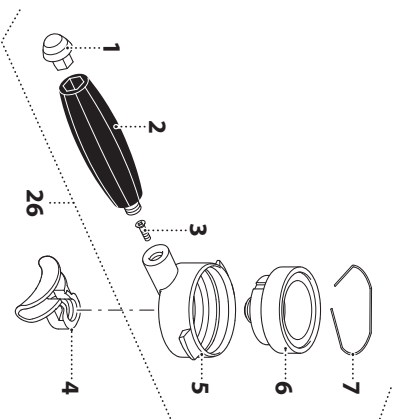


### PORTAFILTRO • PORTAFILTER

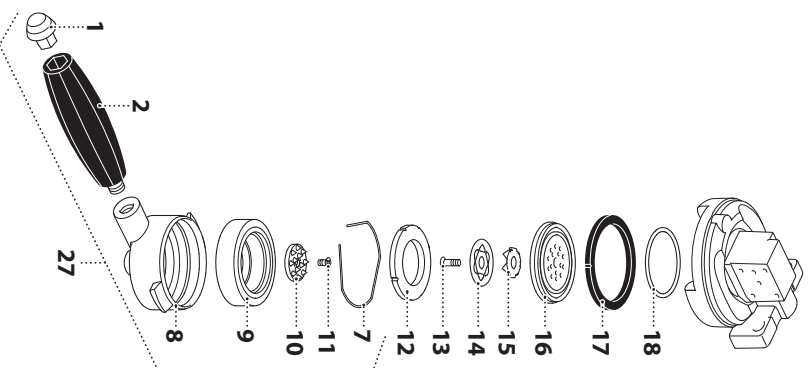
N°	COD.	DESCRIZIONE	DESCRIPTION
1	10792	PORTAFILTRO COMPLETO 2011	COMPLETE PORTAFILTER 2011
1	10799	PORTAFILTRO COMPLETO BASSO 2011	COMPLETE SHORT PORTAFILTER 2011
1	12387	PORTAFILTRO COMPLETO 2011 (GOLD)	COMPLETE PORTAFILTER 2011 (GOLD)
2	656	BECCUCCIO UN CAFFE	1-CUP SPOUT
3	654	BECCUCCIO DUE CAFFE	2-CUPS SPOUT
4	10794	INSERTO CROMO MANOPOLA PORTAFILTRO	CHROMED INSERT FOR PORTAFILTER KNOB
4	12399	INSERTO MANOPOLA PORTAFILTRO (GOLD)	PORTAFILTER HANDLE INSERT (GOLD)
5	10793	MANOPOLA PORTAFILTRO	PORTAFILTER KNOB
6	2891	PORTAFILTRO CROMATO (STD)	SHORT CHROMED PORTAFILTER (STD)
6	5029	PORTAFILTRO CROMATO (BASSO)	CHROMED SHORT PORTAFILTER (SHORT)
7	649	MOLLA FERMA FILTRO 1,2 MM	FILTER STOP SPRING 1.2 MM
8	13421	MOLLA FERMA FILTRO Ø 1,4 MM (CALDA SINGOLA)	FILTER STOP SPRING Ø 1.4 MM (SINGLE POD)
9	647	FILTRO CIECO	BLIND FILTER
10	645	FILTRO 2 CAFFE' (STD)	2-CUPS FILTER (STD)
10	1943	FILTRO 2 CAFFE' (BASSO)	2-CUPS FILTER (SHORT)
10	2266	FILTRO 2 CAFFE' (FORI PICCOLI)	2-CUPS FILTER (SMALL HOLES)
11	646	FILTRO 1 CAFFE' (STD)	1-CUP FILTER (STD)
11	1944	FILTRO 1 CAFFE' (FORI PICCOLI)	1-CUP FILTER (SMALL HOLES)
11	1945	FILTRO 1 CAFFE' (BASSO)	1-CUP FILTER (SHORT)
12	11284	PORTAFILTRO COMPLETO PER CAPSULA CON SUPPORTO	COMPLETE PORTAFILTER FOR CAPSULE WITH SUPPORT
13	9945	CORPO PORTAFILTRO PER CAPSULA	PORTAFILTER BODY FOR CAPSULE
14	10013	SUPPORTO CAPSULA FAP	SUPPORT FOR CAPSULE FAP
15	4571	VITE INOX 5X20	STAINLESS STEEL SCREW 5X20
16	9978	GUARNIZIONE PER CAPSULA FAP	GASKET FOR CAPSULE FAP
17	9980	GUARNIZIONE PER CAPSULA FAP	GASKET FOR CAPSULE FAP
18	1631	GUARNIZIONE 3125 OR 31.42X2.62	O-RING 3125 31.42X2.62
19	1968	GUARNIZIONE SOTTOCOPPA SPESSORE 6,7 MM	GROUP HEAD GASKET THICK. 6.7 MM
19	1939	GUARNIZIONE SOTTOCOPPA SPESSORE 6,3 MM (STD)	GROUPHEAD GASKET THICK. 6.3 MM (STD)
20	638	GUARNIZIONE SPESSORE 0,5 MM	0.5 MM GASKET
20	639	GUARNIZIONE SPESSORE 1 MM	1 MM GASKET
21	4570	PORTADOCLETTE PER CALDA	SHOWER HOLDER FOR COFFEE POD
22	4562	DIFFUSORE PER CAPSULA	DISPERSOR BLOCK FOR CAPSULE
23	4561	FILTRO PER CALDA (SINGOLA)	COFFEE POD FILTER (SINGLE)

PORTAFILTRO • PORTAFILTER

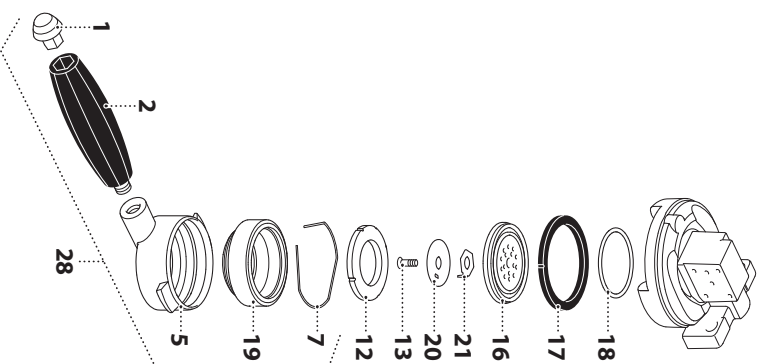
PORTAFILTRO CAPSULA DOPPIA F.A.P  
F.A.P. DOUBLE CAPSULE PORTAFILTER



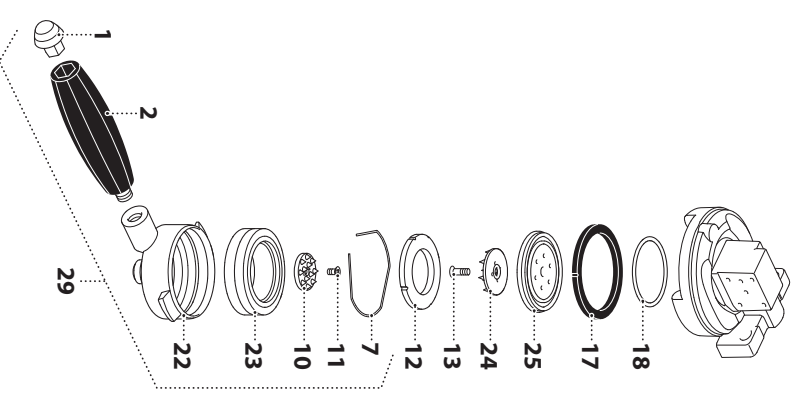
PORTAFILTRO CAPSULA A MODO MIO  
A MODO MIO CAPSULE PORTAFILTER



PORTAFILTRO CAPSULA DOLCE GUSTO  
DOLCE GUSTO CAPSULE PORTAFILTER

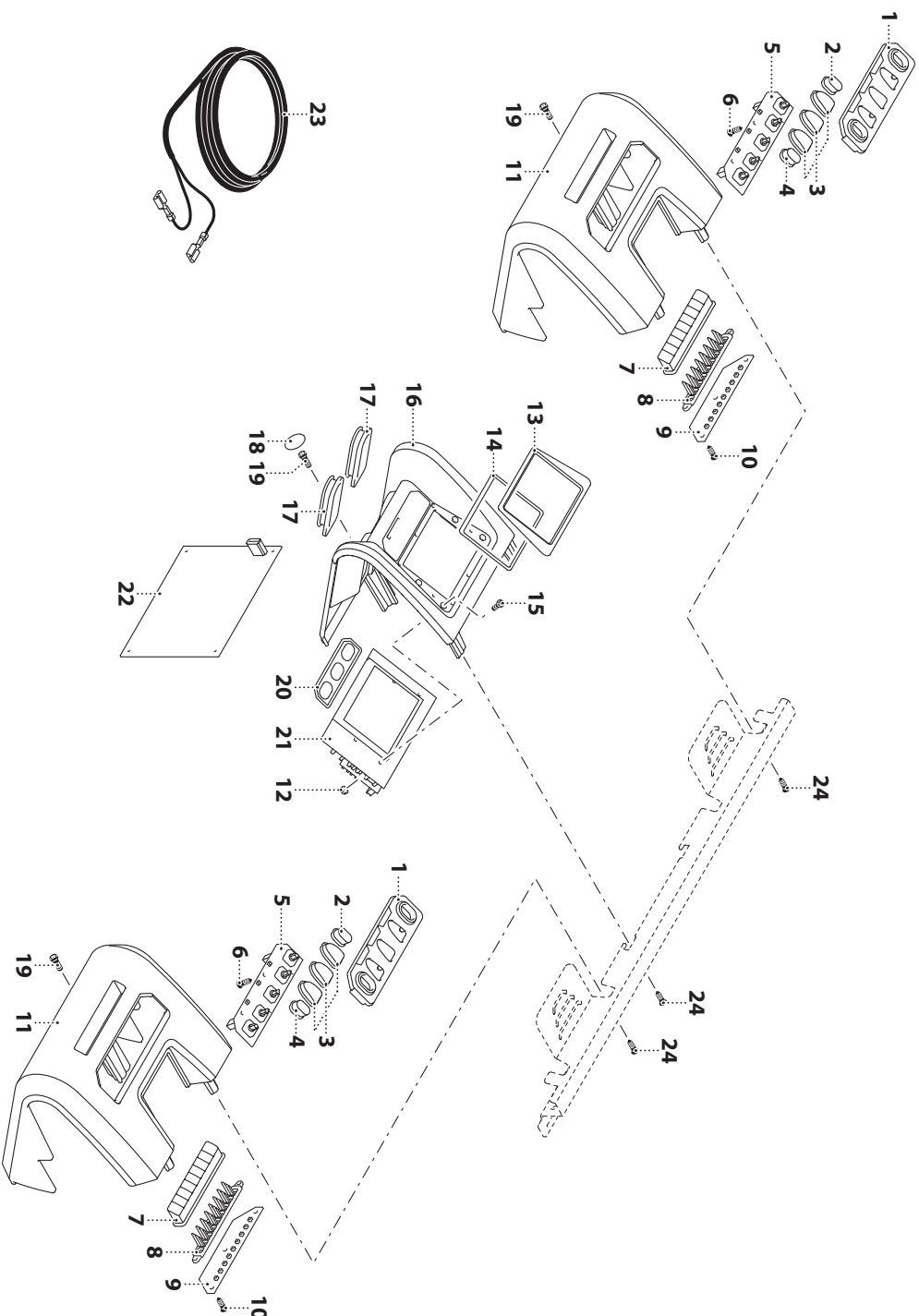


PORTAFILTRO CAPSULA LAVAZZA BLUE  
LAVAZZA BLUE CAPSULE PORTAFILTER





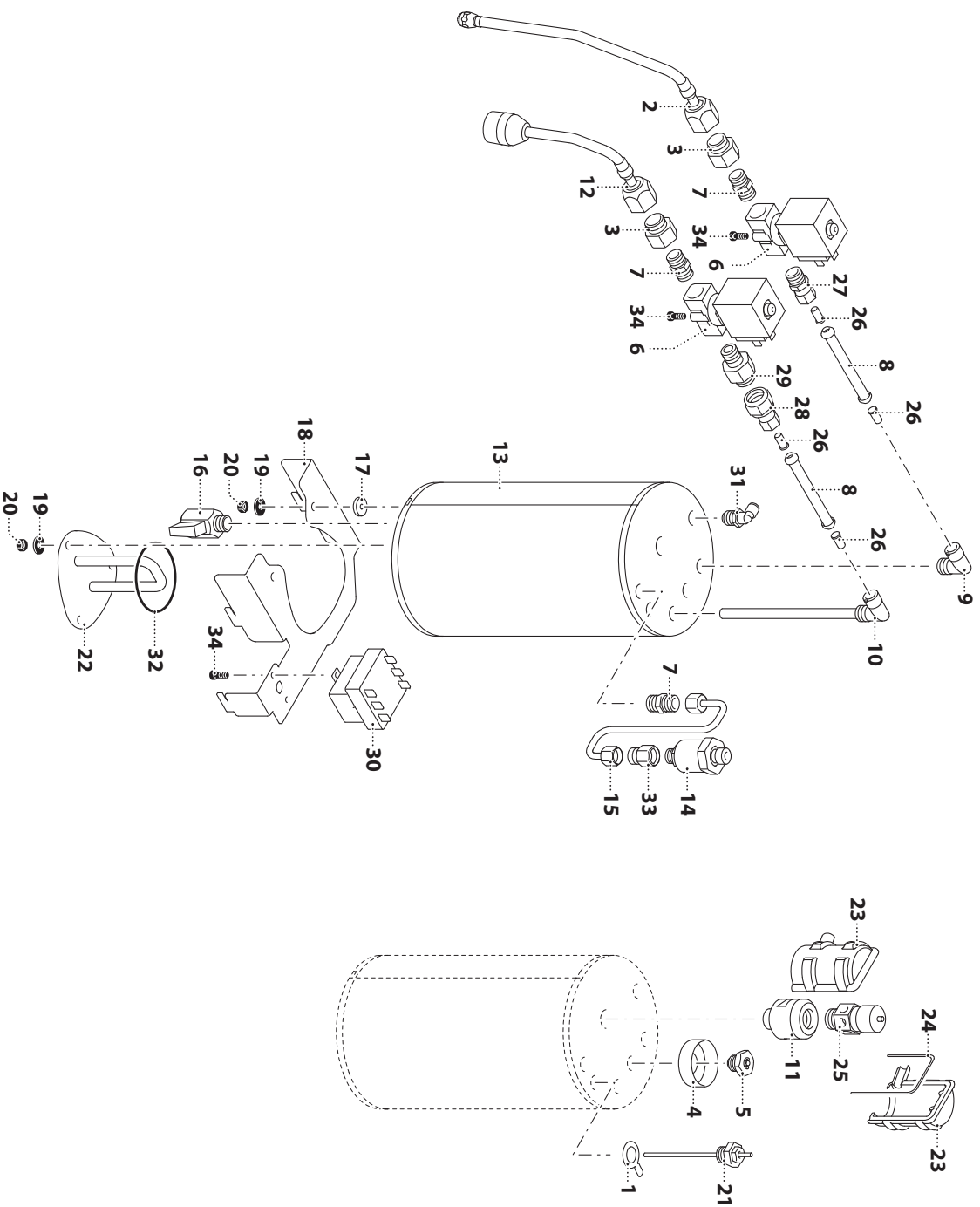
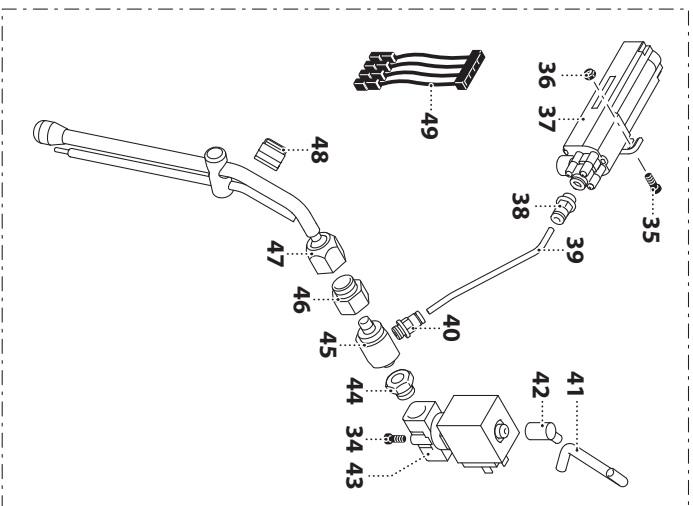
PULSANTIERA - DISPLAY • PUSH-BUTTON PANEL - DISPLAY





**BOILER SERVIZI • STEAM AND HOT WATER BOILER**

M.A.T.





### BOILER SERVIZI • STEAM AND HOT WATER BOILER

N°	COD.	DESCRIZIONE	DESCRIPTION	N°	COD.	DESCRIZIONE	DESCRIPTION
1	12982	ANELLO MASSA SONDA LIVELLO	LEVEL PROBE MASS RING	44	14092	MANICOTTO 1/8" F-1/4" M	SLEEVE 1/8" F-1/4M
2	12901	TUBO VAPORE SNO DATO	ARTICULATED STEAM TUBE	45	15003	ASPIRATORE ORIENT. D=2MM M.A.T.	ADJUSTABLE SUCTION D=2MM M.A.T.
3	12086	ADATTATORE 1/4F- 3/8M	ADAPTER 1/4F- 3/8M	46	12086	ADATTATORE 1/4F- 3/8M	ADAPTER 1/4F- 3/8M
4	5124	COMPL. MANIPOLA ANODIZ. NERA	BLACK ANODIZED BACK PART FOR KNOB	47	12937	LAMICIA VAPORE M.A.T	STEAM WAND M.A.T
5	508	VALVOLINO DEPRESSIONE	DEPRESSION VALVE	48	1781	MANIGLIETTA PER TUBO VAPORE	HANDLE FOR STEAM WAND
6	4843	EV 2 VIE 1/4-1/4 24V/50-60HZ	EV 2 VIE 1/4-1/4 24V/50-60HZ	49	15015	CABLAGGIO VALVOLA PROPORZIONALE ARIA M.A.T	MILK PROBE AIR PROPORTIONAL VALVE WIRING
7	668	NIPLES 1/4"	NIPPLE 1/4"				
8	7140	TUBO TEFLON 8 X 6	TEFLON HOSE 8 X 6				
9	7142	RACCORDO AD ANGOLO MASCHIO 1/4"	MALE ELBOW FITTING 1/4"				
10	12912	TUBO PESCANTE A L. BOILER SERVIZI	LIMMERSED TUBE-HOT WATER AND STEAM BOILER				
11	12893	ADATTATORE VALVOLA SICUREZZA 3/8"	SAFETY VALVE ADAPTER 3/8"				
12	12902	TUBO SCARICO ACQUA	WATER DRAIN TUBE				
13	12911	BOILER SERVIZI	BOILER				
14	12910	TRASDUTTORE PRESSIONE	PRESSURE TRANSDUCER				
15	13004	TUBO TRASDUTTORE DI PRESSIONE	PRESSURE TRANSDUCER TUBE				
16	924	RUBINETTO A SFERRA 1/4" M/F	BALL TAP 1/4" M/F				
17	221	GUARNIZIONE D.14	GASKET D.14				
18	12849	PIASTRA SUPPORTO BOILER SERVIZI	SUPPORT BOILER PLATE				
19	1746	RONDELLA PIANA 6 X 12	FLAT WASHER 6 X 12				
20	815	SONDA ESAGONALE M6	HEX NUT M6				
21	6357	SONDA CONTROLLO LIVELLO	LEVEL CONTROL PROBE				
22	12904	RESISTENZA 230V-1200W	HEATING ELEMENT 230 V - 1200 W				
22	15297	RESISTENZA 110V - 1200W	HEATING ELEMENT 110V - 1200W				
23	12736	PROTEZIONE VALVOLA DI SICUREZZA	SAFETY VALVE PROTECTION				
24	12734	GUARNIZ. VALV. SICUREZZA	GASKET VALVE PROTECTION				
25	381	VALVOLA SICUREZZA 3/8	SAFETY VALVE 3/8				
26	7141	BUSSOLA DI RINFORZO	REINFORCING BUSH				
27	13009	RACCORDO DRITTO TUBO 8 1/4 MASCHIO	1/4 MALE STRAIGHT COUPLING FOR 8MM TUBE				
28	9575	RACCORDO CILINDRICO DIRITTO	STRAIGHT CYLINDRICAL FITTING				
29	15504	ADATTATORE RUBINETTO 1/4M-3/8M	ADAPTER FOR TAP 1/4M-3/8M				
30	8019	TERMOSTATO SICUREZZA (UL/CSA)	SAFETY THERMOSTAT (UL/CSA)				
31	9824	GOMITO MASCHIO 1/4"	MALE ELBOW 1/4"				
32	12905	OR RESISTENZA BOILER	O RING FOR BOILER WARMER HEATING				
33	8988	FLANCO INTERNO SINISTRO TAKE AWAY	TAKE AWAY LEFT INSIDE SIDE PANEL				
34	1881	VITE TESTA ESAGONALE 4 X 8 ZINCATO	GALVANIZED HEXAGONAL SCREW 4X8				
35	2333	VITE TESTA CILINDRICA A GROCE 4X12	HEAD CAP SCREW TO 4X12				
36	5686	DADO FLANGIATO M4 4,8 ZINCATO	GALVANIZED FLANGE NUT M4 4,8				
37	15004	VALVOLA PROPORZIONALE ARIA M.A.T.	M.A.T. AIR PROPORTIONAL VALVE				
38	15002	RACCORDO DRITTO 4/6	STRAIGHT FITTING 4/6				
39	8777	TUBO TEFLON 4 X 2,5 CALIBRATO	CALIBRATED TEFLON PIPE 4 X 2.5				
40	8851	RACCORDO DRITTO 1/8" MASCHIO	STRAIGHT MALE FITTING 1/8"				
41	838	TUBETTO GOMMA/SILICONE 5 X 8	SILICONE/RUBBER HOSE 5X8				
42	11583	COUDE BECCUCCIO CAFFE'	COFFEE SPOUT END				
43	4997	EV 3VIE 12V/ 50-60HZ	EV 3VIE 12V/ 50-60HZ				



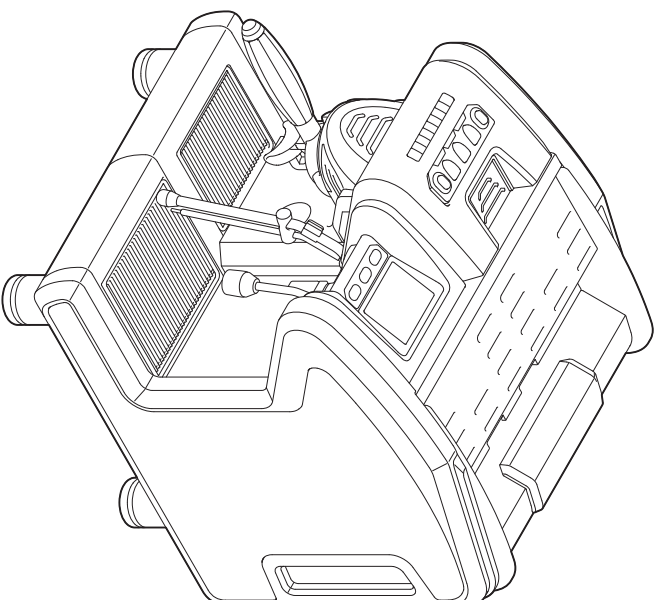
### IMPIANTO IDRICO • WATER SYSTEM

N°	COO.	DESCRIZIONE	DESCRIPTION
1	1377	TUBO SILICONE 7 X 1	SILICON HOSE 7 X 1
2	15268	SCARICO ROMPIGETTO	JET BREAKET
3	3272	TUBO MANOMETRO ACQUA	WATER PRESSURE GAUGE PIPE
4	15267	TUBO ALIMENTAZIONE CALDAIETTA	TUBE BOILER SUPPLY
5	15265	COLLETTORE ALIMENTAZIONE	OUTLET COLLECTOR
6	9410	TUBO FLEX INOX 1/4 F/F 19CM.	STAINLESS ST. FLEX PIPE 1/4 F/F 19CM.
7	8777	TUBO TEFLON 4 X 2.5 CALIBRATO	CALBRATED TEFLON PIPE 4 X 2.5
8	15266	TUBO VALVOLE ESP	TUBE FOR ESP VALVE
9	288	VALVOLE ESPANSIONE CON PORTAGOMMA	EXPANSION VALVE WITH FITTING
10	838	TUBETTO GOMMA/SILICONE 5 X 8	SILICONE/RUBBER HOSE 5X8
11	904	PIPETTA 1/4"-1/8"	JOINT 1/4" - 1/8"
12	12925	CONTATORE VOLUMETRICO	VOLUMETRIC FLOWMETER
13	11583	COUDE BECCUCCIO CAFFE'	COFFEE SPOUT END
14	12985	RACCORDO T 1/4"	T COUPLING 1/4"
15	7640	POMPA 230V.	PUMP 230V.
15	7639	POMPA 110V ROSSINI	ROSSINI PUMP 110V
16	12923	TUBO FLEX 3/8 F - 3/4 FC 160 CM	FLEX TUBE 3/8 F - 3/4 FC 160 CM
17	13063	TAPPO ATTACCO RETE IDRICA	WATER SYSTEM CONNECTION CAP
18	2228	GUARNIZIONE IN KLINGHER DIAMETRO 11,5 SPESSORE 2	KLINGHER O-RING D=11,5 / THICH.=2
19	275	FILTRO	FILTER
20	9825	RACCORDO A GOMITO 1/8" MASCHIO	MALE ELBOW 1/8"
21	1625	MOLLA GIGLEUR	GIGLEUR SPRING
22	12922	STAFFA SUPPORTO EV RETE IDRICA	EV WATER SYSTEM SUPPORTING BRACKET
23	13047	VITE TC.M 3,9 X 16	TC SCREW M 3.9 X 16
24	591	GHIERA 3/8 SPESS.=3MM. X RUBIN.	LOCK NUT 3/8" THICKNESS 3 MM.
25	6369	MOLLA PROTEZ. TUBO SILICONE	SILICON PIPE PROT. SPRING
26	12921	EV / REG. PRESS. RETE IDRICA	SV/WATER MAINS PRESSURE ADJ.S.
27	7542	TUBO ELETTROVALVOLE LIVELLO	LEVEL SOLENOID VALVE PIPE
28	284	TAPPO FEMMINA 1/4	FEMALE COVER 1/4
29	12481	MANOMETRO	PRESSURE GAUGE
30	9383	EV 2 VIE 1/8" 24V 50HZ (STD)	2-WAYS SOLENOID VALVE 1/8" 24V 50HZ (STD)
30	15821	EV 2 VIE 1/8" 24V 60HZ (UL)	2-WAYS SOLENOID VALVE 1/8" 24V 60HZ (UL)
31	8351	MOLLA BIFILARE DIAMETRO 12	DOUBLE CLAMP D=12



**laSpaziale**

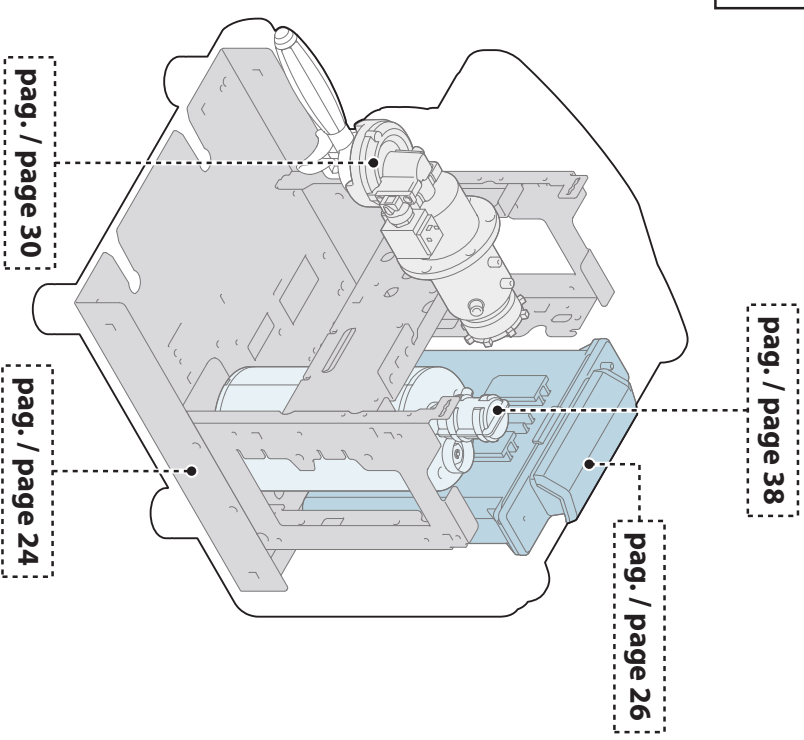
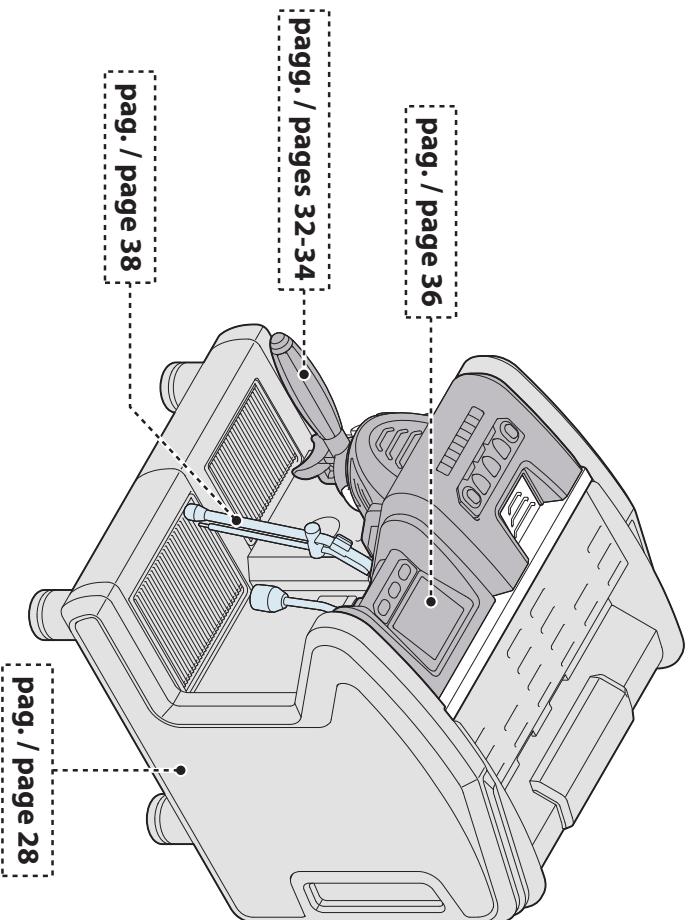
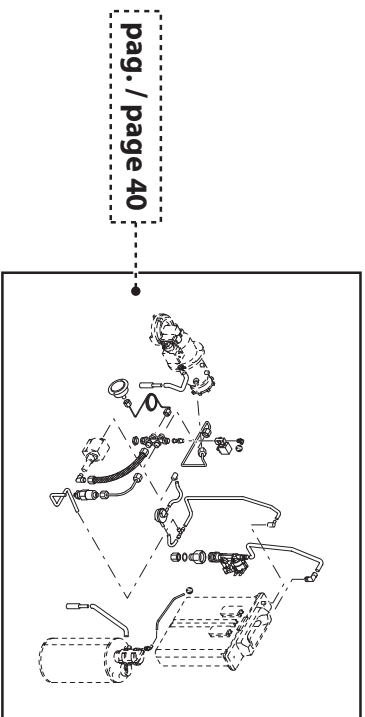
espresso coffee machines



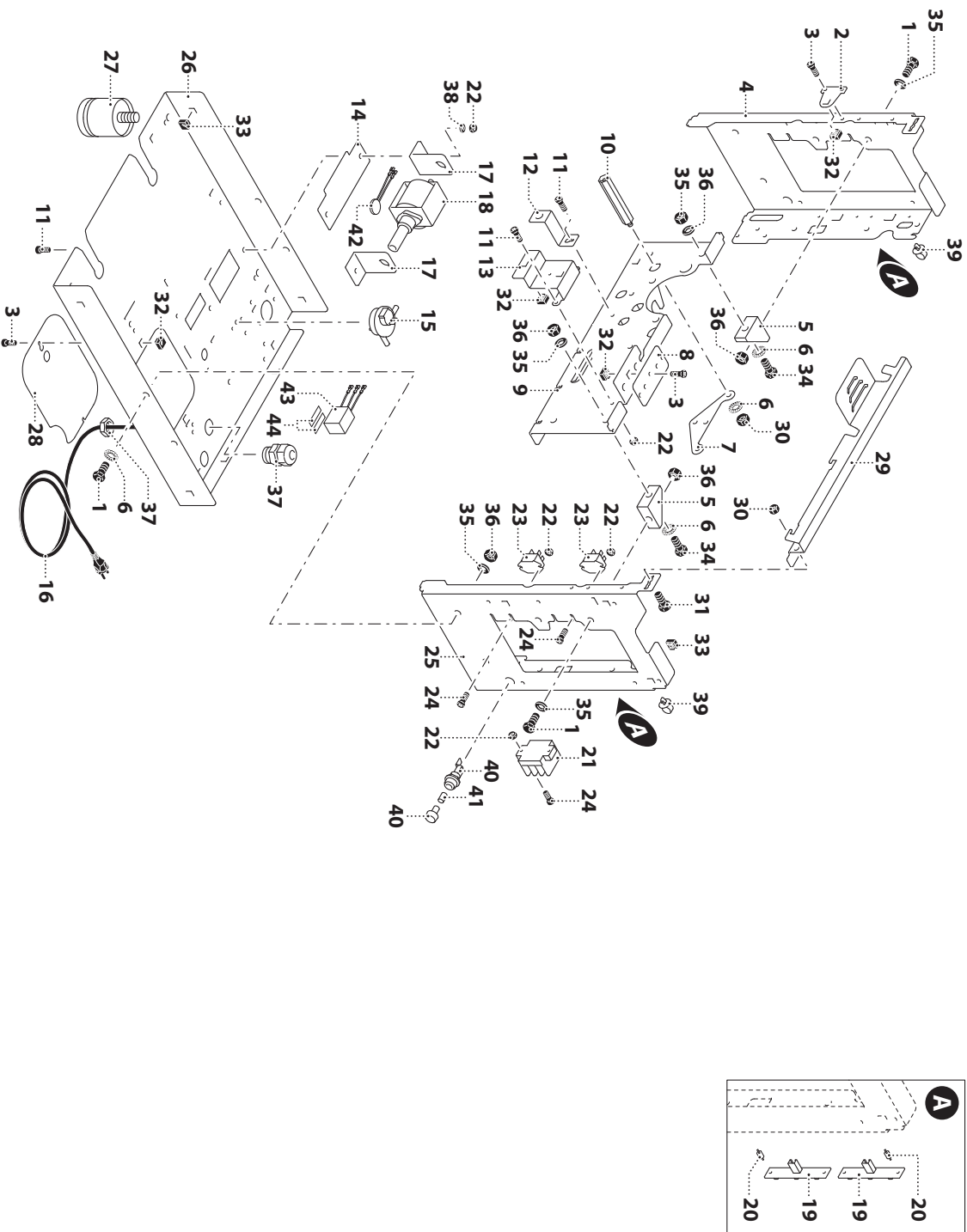
**S11**  
MINIBRIO

CATALOGO PARTI DI RICAMBIO • SPARE PARTS LIST





STRUTTURA DI BASE • BASE STRUCTURE

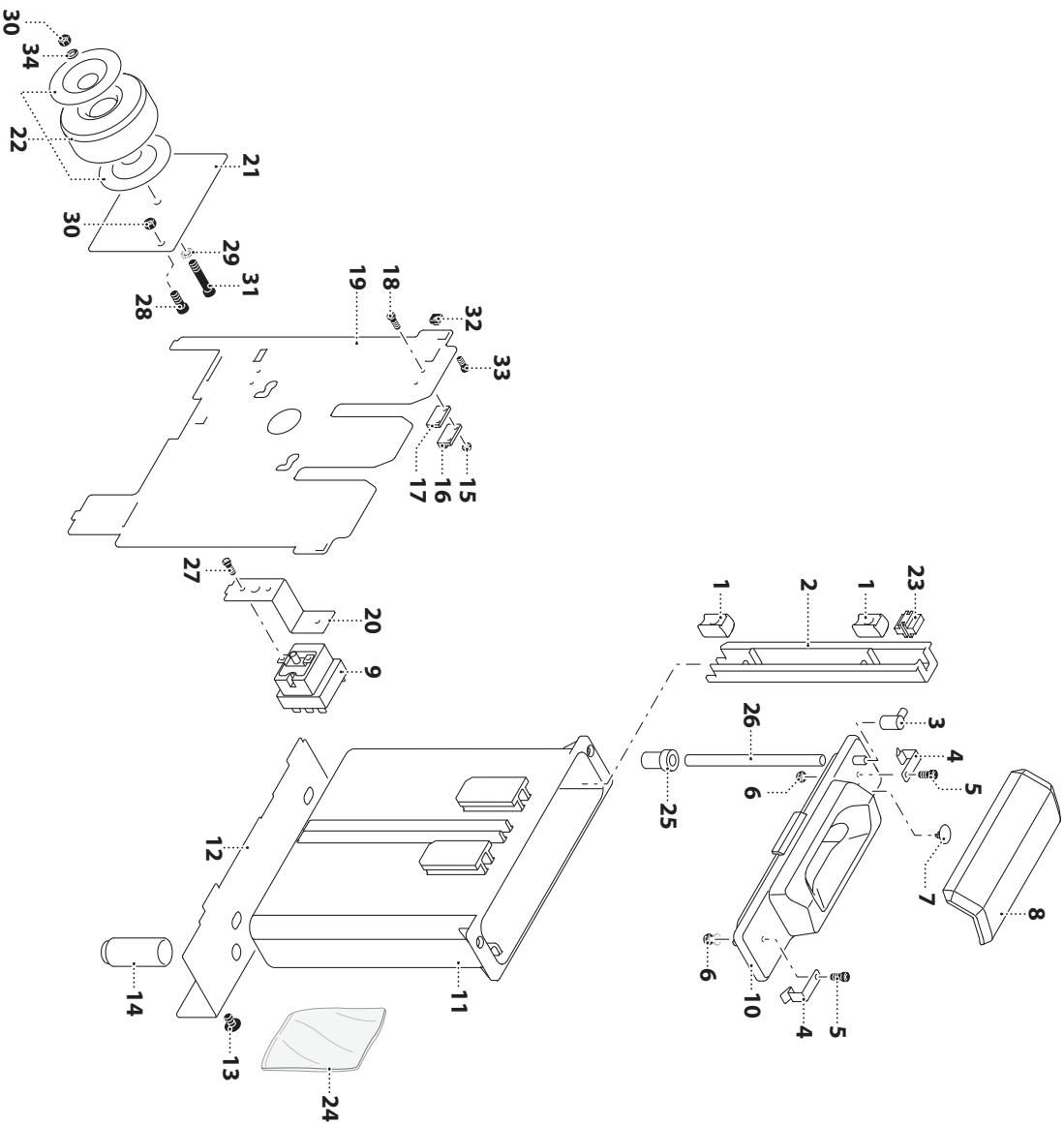




### STRUTTURA DI BASE • BASE STRUCTURE

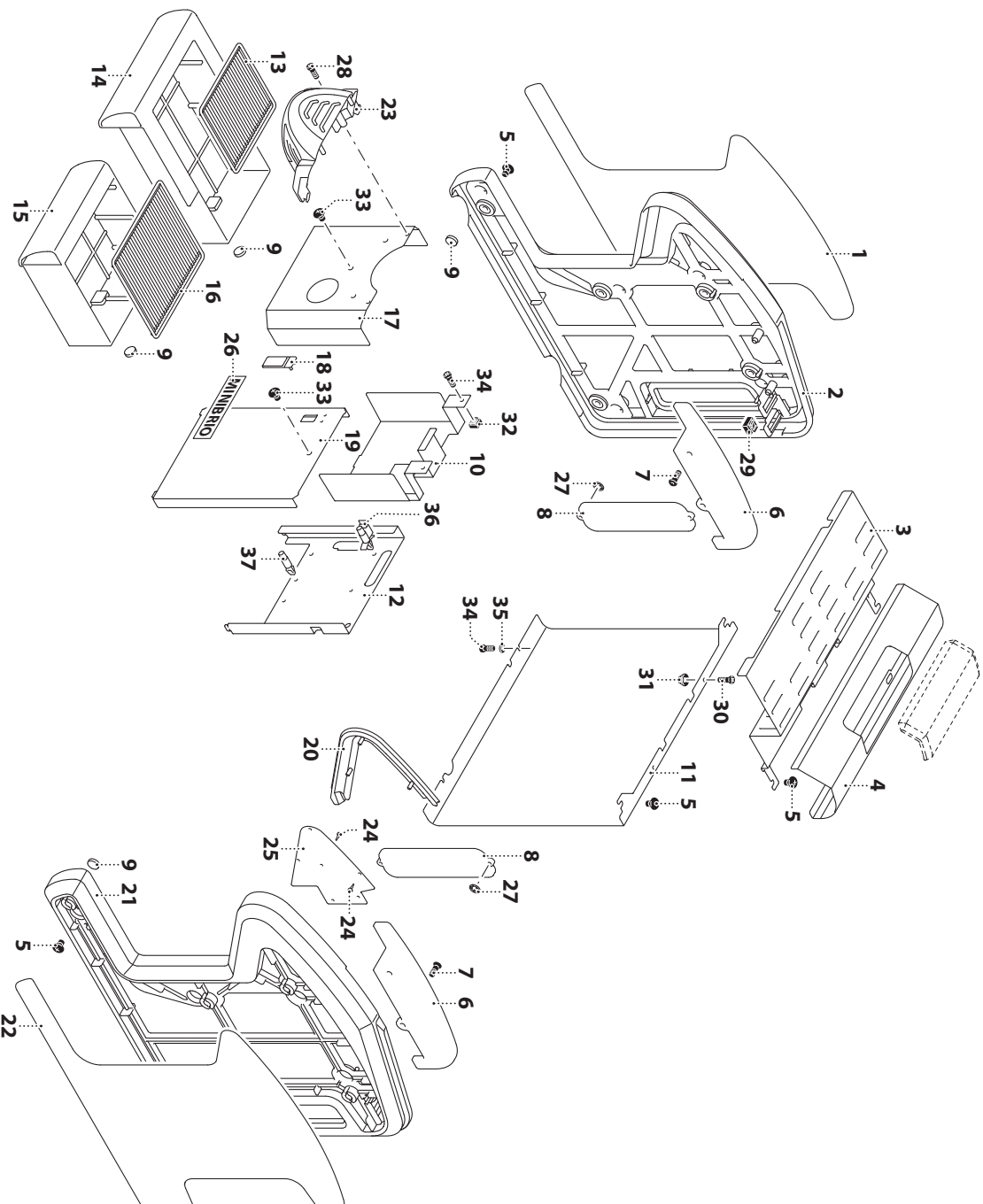
N°	COD.	DESCRIZIONE	DESCRIPTION	N°	COD.	DESCRIZIONE	DESCRIPTION
1	1747	VITE TESTA ESAGONALE 8 X 20 ZINCATA	GALVANIZED HEXAGONAL SCREW 8X20	44	10012	BIADESIVO 3M VHB H12	BI-ADHESIVE TAPE 3M VHB H12
2	15241	PIASTRINA FISSAGGIO MODULO ABS SX	ABS MODULE				
3	2333	VITE TESTA CILINDRICA A GROCE 4X12	HEAD CAP SCREW TC 4X12				
4	15236	FLANCO INTERNO SX	LEFT INSIDE PANEL				
5	9813	ANGOLARI PER BASAMENTO	BASE ANGLE				
6	2282	RONDELLA DENTELLATA DIAMETRO 8	TOOTH WASHER Ø 8 MM				
7	15240	PIASTRA COLONNE SOTTORIPPO	SUPPORT PLATE				
8	15245	PIASTRA INOX SUPP. EV.H2O/VAP	INOX PLATE SUPPORT FOR EV.H2O/VAP				
9	15255	FASCIONE	HOLDER PANEL				
10	12896	PERNO M6	PIN M6				
11	5685	VITE TE FLANGIATA 5 X 12	FLANGED HEXAGONAL HEAD SCREW 5X12 GALVANIZED				
12	15247	STATFA SUPPORTO MANOMETRO	PRESSURE GAUGE SUPPORT BRACKET				
13	15243	PIASTRINA FISSAGGIO MODULO DISPLAY	DISPLAY MODULE SUPPORT				
14	15254	PIASTRINA PROTEZIONE POMPA A VIBRAZIONE	VIBRATING PUMP WIRING (STD)				
15	12925	CONTATORE VOLUMETRICO	VOLUMETRIC FLOWMETER				
16	12962	CAVO ALIMENTAZIONE (STD)	SUPPLY CABLE (STD)				
16	7698	CAVO ALIM SPIVA 125V 20°	CABLE+PLUG 125V 20°				
17	5464	SUPP. GOMMA L X POMPA VIBRAZIONE	RUBBER SUPPORT L X VIBRATION PUMP				
18	7640	POMPA 230V 50HZ 20 BAR	PUMP 230V 50HZ 20 BAR				
19	11850	CIRCUITO LED FRANCO	SIDE LED CIRCUIT				
20	12514	DISTANZIALE CIRCUITO LED	LED CIRCUIT SPACER				
21	10026	MORSETTERIA 3 POLI	3-P-POLES TERMINAL BOARD				
22	5686	DADO FLANGIATO M4 4,8 ZINCATO	GALVANIZED FLANGE NUT M4 4,8				
23	9866	RELE STATICO	STATIC RELAY				
24	4336	VITE TO A GROCE 4 X 16	CROSSED HEAD SCREW TC 4X16				
25	15236	FLANCO INTERNO DX	RIGHT INSIDE PANEL				
26	15251	BASE	BASE				
27	15292	PIEDINO INOX	STAINLESS FOOT				
28	12831	PIASTRA PROTEZIONE RESISTENZA BOLLER	BOILER GUARD PLATE				
29	15253	TRAVERSA FISSAGGIO MODULI	PANEL MODULE FIXING TRAVERSE				
29	815	DADO ESAGONALE M6	HEX NUT M6				
31	10950	PERNO M6X20	M6X20 PIN				
32	9887	DADO IN GABBIA M4	CAGE NUT M4				
33	1749	DADO A GABBIA M6	CAGE NUT M6				
34	1928	VITE TESTA ESAGONALE 8 X 25 ZINCATA	GALVANIZED HEXAGONAL SCREW 8X25				
35	416	RONDELLA PIANA DIAMETRO 8 ZINCATA	GALVANIZED FLAT WASHER D 8				
36	1744	DADO ESAGONALE M8	HEX NUT M8				
37	7521	PRESSACANO + GHIERA PG13,5 NERO	BLACK CABLE GLAND + RING NUT PG13,5				
38	816	RONDELLA D 6	WASHER D 6				
39	12879	FERRMACANO D 8	D 8 CABLE HOLDER				
40	13349	PORTAFUSIBILE 30A 250V (UL)	FUSE HOLDER 30A 250V (UL)				
41	9144	FUSIBILE 6,3X32 20A UL	FUSE 6,3X32 20A UL				
42	10822	PROTETT. TERMICO POM.P.VIBR.	VIBR. PUMP THERMAL PROT.				
43	14192	SERIE FILTRI CABLATI (NO UL)	SERIES OF CABLED FILTERS (NO UL)				

### SERBATOIO • TANK

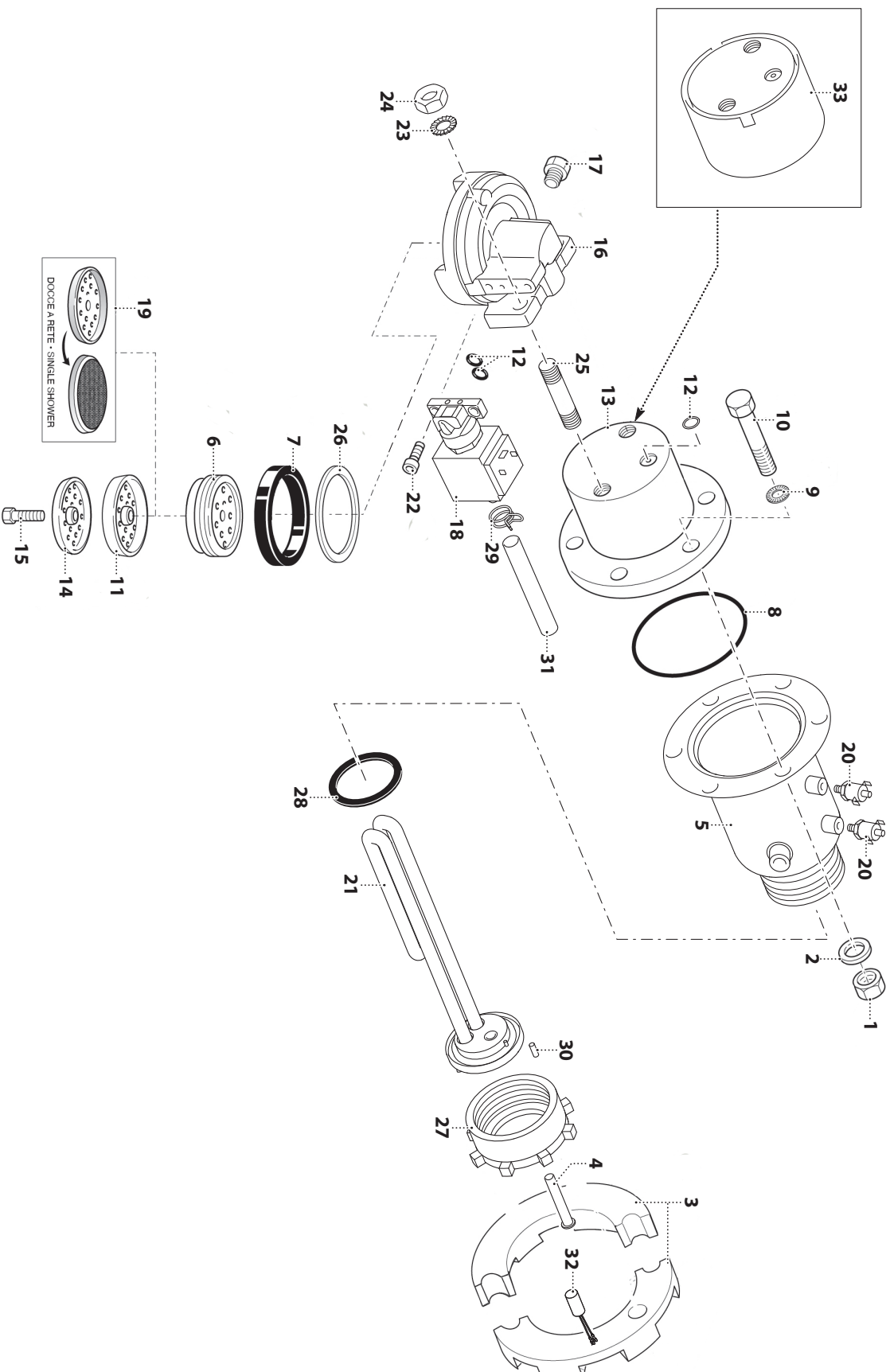


N°	COO.	DESCRIZIONE	DESCRIPTION
1	7620	GALLEGGIANTE	LEVEL FLOATER
2	12856	GUIDA MAGNETI GALLEGGIANTE SERBATOIO ACQUA	WATER TANK FLOATING MAGNET GUIDE
3	11583	COUDE BECCUCCIO CAFFE'	COFFEE SPOUT END
4	15756	CLIP LATERALE CHIUSURA SERBATOIO	WATER TANK COVER CLIP
5	669	VITE TESTA CIL. CAVA ESAGONALE 4X10 INOX	STAINLESS STEEL SCREW 4X10 TCCE
6	5686	DADO FLANGIATO M4 4.8 ZINCATO	GALVANIZED FLANGE NUT M4 4.8
7	257	DISCHETTO NEUTRO	NEUTRAL DISC
8	12855	CHIUSURA COPERCHIO SERBATOIO ACQUA	WATER TANK COVER LOCK
9	8019	TERMOSTATO SICUREZZA (ULCSA)	SAFETY THERMOSTAT (ULCSA)
10	15281	COPERCHIO SERBATOIO ACQUA	WATER TANK COVER
11	15280	SERBATOIO ACQUA	WATER TANK
12	15261	LAMIERA SOSTEGNO SERBATOIO	TANK SUPPORT PLATE
13	1850	VITE TBL 6 X 15	6X15 TBL SCREW
14	13210	BOCCOLA SCARICO SERBATOIO	TANK DISCHARGE BUSH
15	820	DADO M3	NUT M3
16	7635	SENSORE LIVELLO CABLATO	LEVEL SENSOR WITH CABLE
17	12857	SPESSORE SENSORE REED	SPACER FOR REED SENSOR
18	8823	VITE TC M3X10	SCREW TC M3X10
19	15249	PIASTRA SUPPORTO SERBATOIO ACQUA	WATER TANK SUPPORT PLATE
20	15517	PIASTRINA SOSTEGNO TERMOSTATO SICUREZZA	SAFETY THERMOSTAT SUPPORT
21	15518	PIASTRA SOSTEGNO TRASFORMATORE	TRANSFORMER SUPPORT
22	12929	TRASFORMATORE	TRANSFORMER
23	14777	COMPLETAMENTO GUIDA MAGNETE GALLEGGIANTE	FLOATING MAGNET
24	11902	ADDOLCITORE A SACCO PER TANICA	WATER SOFTENER WITH SACK FOR TANK
25	9101	FILTRO ACQUA F1830 PER	WATER FILTER F1830 FOR
26	838	TUBETTO GOMMA/SILICONE 5 X 8	SILICONE/RUBBER HOSE 5X8
27	1881	VITE TESTA ESAGONALE 4 X 8 ZINCATA	GALVANIZED HEXAGONAL SCREW 4X8
28	8378	INSERTO M6 PER FIANCO	M6 INSERT X SIDE PANEL
29	1993	RONDELLA DENTELLATA ESTERNO Ø 6 MM	TOOTH WASHER EXT. Ø 6 MM
30	815	DADO ESAGONALE M6	HEX NUT M6
31	13046	VITE TC 6X50	CROSSED HEAD SCREW TC 6X50
32	9887	DADO IN GABBIA M4	CAGE NUT M4
33	2333	VITE TESTA CILINDRICA A CROCE 4X12	HEAD CAP SCREW TC 4X12
34	816	RONDELLA D 6	WASHER D 6

### CARROZZERIA • BODY



N°	COO.	DESCRIZIONE	DESCRIPTION
1	15425	INSERTO INOX SX PER FIANCO ESTERNO	LH STAINLESS STEEL INSERT FOR EXTERNAL SIDE
2	15420	FIANCO ESTERNO ABS SX NERO	ABS EXTERNAL LEFT SIDE PANEL BLACK
3	15258	GRIGLIA APPOGGIATAZZE SUPERIORE	UPPER CUP HOLDER GRID
4	15257	COPERTURA POSTERIORE SUPERIORE	REAR UPPER COVERING
5	1850	VITE TBL 6 X 15	6X15 TBL SCREW
6	12860	VETRINA LATERALE	SIDE GLASS
7	1937	VITE TC A CROCE AUTOFILETTANTE 3,9 X 9,5	SELF-TAPPING SCREW TC 3.9 X 9.5
8	12861	VETRINO ISPEZIONE SERBATOIO ACQUA	WATER TANK INSPECTION GLASS
9	12886	MAGNETE NEODIMIO CILINDRICO D8	CYLINDRICAL NEODYMIUM MAGNET D.8
10	15244	PROTEZIONE VANO BACINELLA	TRAY GUARD
11	15256	PANNELLO POSTERIORE INOX	STAINLESS STEEL REAR PANEL
12	15250	PIASTRA SUPPORTO CENTRALINA POTENZA	POWER CONTROL UNIT SUPPORT PLATE
13	12838	GRIGLIA BACINELLA CAFFE'	COFFEE DRIP TRAY GRID
14	12862	BACINELLA CAFFE'	DRIP TRAY COFFEE
15	12864	BACINELLA SERVIZI	DRIP TRAY
16	12839	GRIGLIA BACINELLA SERVIZI	HOT WATER DRIP TRAY GRID
17	15238	PIASTRA INOX SOTTOGRUPPO	STAINLESS SUPPORT PLATE
18	11511	TAPPO CONNETTORE USB	USB PLUG COVER
19	15263	PIASTRA PROTEZIONE CENTRALINA POTENZA	CONTROL UNIT GUARD PLATE
20	15282	COMPLET. DX MODULO ABS DISPLAY NERO	ABS DISPLAY RIGHT PANEL COMPL. BLACK
20	15573	COMPLET. DX MODULO ABS DISPLAY BIANCO	ABS DISPLAY RIGHT PANEL COMPL. BLACK
21	15419	FIANCO ESTERNO ABS DX NERO	ABS EXTERNAL RIGHT SIDE PANEL BLACK
22	15424	INSERTO INOX DX PER FIANCO ESTERNO	RH STAINLESS STEEL INSERT FOR EXTERNAL SIDE
23	15279	COPERTURA GRUPPO	GROUP CAP
24	1946	VITE AUTOFILETTANTE M2,9X9,5	SELF-TAPPING SCREW M2.9X9.5
25	15264	PIASTRA COMPLET. INTERNO FIANCO DX	PLATE COMPLEMENTARY RIGHT SIDE
26	15629	ADESIVO MINIBRIO	MINIBRIO LABEL
27	1243	ANELLO FISSAGGIO PIASTRINA VETRO LIVELLO	FASTENING RING FOR LEVEL GLASS PLATE
28	8823	VITE TC M3X10	SCREW TC M3X10
29	1749	DADO A GABBIA M6	CAGE NUT M6
30	669	VITE TESTA CIL. CAVA ESAGONALE 4X10 INOX	STAINLESS STEEL SCREW 4X10TCCE
31	5686	DADO FLANGIATO M4 4,8 ZINCATO	GALVANIZED FLANGE NUT M4 4.8
32	9887	DADO IN GABBIA M4	CAGE NUT M4
33	15632	VITE	SCREW
34	2333	VITE TESTA CILINDRICA A CROCE 4X12	HEAD CAP SCREW TC 4X12
35	1849	RONDELLA	WASHER
36	9888	DISTANZIATORE CIRCUITO TYPEA	CIRCUIT SPACER TYPEA
37	12947	DISTANZIALE APPOGGIO CENTRALINA	SUPPORT CONTROL UNIT SPACER

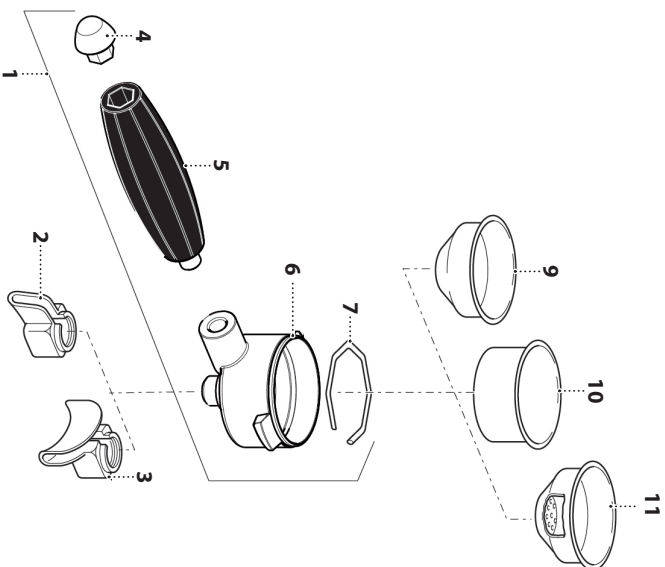


**GRUPPO EROGATORE • DELIVERY GROUP**

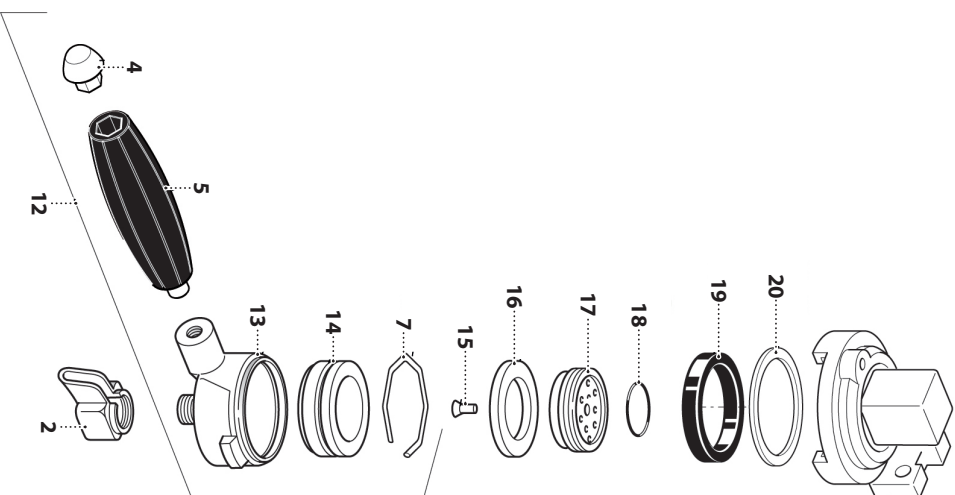
N°	COO.	DESCRIZIONE	DESCRIPTION
1	1744	DADO ESAGONALE M8	HEX NUT M8
2	416	RONDELLA PIANA DIAMETRO 8 ZINCATO	GALVANIZED FLAT WASHER D8
3	407	SEMANELLO ALLUMINIO	ALUMINIUM HALF-RING
4	7483T	TUBO POZZETTO SONDA	DRAIN PIPE FOR PROBE
5	15246T	CALDAIETTA CAFFE' T.E.A.	BOILER COFFE' T.E.A.
6	1941	PORTADOCCHETTE IN OTTONE H=11	BRASS SHOWER HOLDER H=11
6	641	PORTA DOCCETTA OTTONE H=13 (STD)	SHOWERHEAD HOLDER H=13 (STD)
6	1942	PORTADOCCHETTE IN OTTONE H=15 (ALTO)	BRASS SHOWER HOLDER H=15 (HIGH)
7	1939	GUARNIZIONE SOTTOCOPPA SPESSORE 6,3 MM (STD)	GROUP HEAD GASKET THICK, 6.3 MM (STD)
7	1968	GUARNIZIONE SOTTOCOPPA SPESSORE 6,7 MM	GROUP HEAD GASKET THICK, 6.7 MM
8	2417	GUARNIZIONE OR GRUPPO VITON	GROUP VITON O-RING
9	417	ROSETTA DENTELLATA DIAMETRO 8	TOOTH WASHER EXT. D8
10	418	VITE TESTA ESAGONALE 8X45 ZINCATO	GALVANIZED HEX SCREW 8X45
11	2908	DOCCETTA	UPPER SHOWER
12	625	GUARNIZIONE OR 105 VITON MAGGIORATA	STRONGER O-RING 105 VITON
13	1222T	CAMPANA GRUPPO TEATA	GROUP HEAD BELL (T.E.A.)
14	2909	CONTRODOCCIA	LOWER SHOWER
15	643	VITE TE 5X25 INOX	STAINLESS STEEL HEX 5X25 SCREW
16	15271	CORPO GRUPPO	GROUP BODY
17	490	TAPPO 1/8" M	PLUG 1/8 M
18	15272	ELETTROVALVOLO 3 VIE 24 VAC 90°	3-WAYS SOLENOID VALVE 24VAC 90°
19	2578	DOCCETTA A RETE	NET SHOWER
20	6687	TERMOSTATO SICUREZZA X PROFIELE	SAFETY THERMOSTAT
21	7201	RESISTENZA 230V./1250W	HEATING ELEMENT 230V./1250W
21	7476	RESISTENZA 110V/800W	HEATING ELEMENT 110V/800W
22	15293	VITE M5X14	SCREW M5X14
23	2283	RONDELLA DENTELLATA DIAMETRO 12	TOOTH WASHER Ø 12 MM
24	1219	DADO M10X1,25	M10X1,25 NUT
25	1218	PRIGIONIERO 10 X 35	SCREW STUD 10 X 35
26	638	GUARNIZIONE SPESSORE 0,5 MM	0.5 MM GASKET
26	639	GUARNIZIONE SPESSORE 1 MM	1 MM GASKET
27	7387	GHIERA M52X1,5 PER SCAMBIATORE	RING NUT M52X1,5 FOR HEAT EXCHANGER
28	7418	GUARNIZIONE OR 2.131 FKM 70	O-RING 2.131 FKM 70
29	8351	MOLLA BIFILARE DIAMETRO 12	DOUBLE CLAMP D=12
30	11622	SPINA TEMP 2X6	TEMP. PIN 2X6
31	1377	TUBO SILICONE 7 X 1	SILICON HOSE 7 X 1
32	15299	SONDA TEMPERATURA CALDAIETTA CAFFE'	BOILER CAFFE' TEMPERATURE PROBE
33	15615	FASCIA COIBENTAZIONE CAMPANA GRUPPO	GROUP BELL INSULATION BAND

PORTAFILTRO • PORTAFILTER

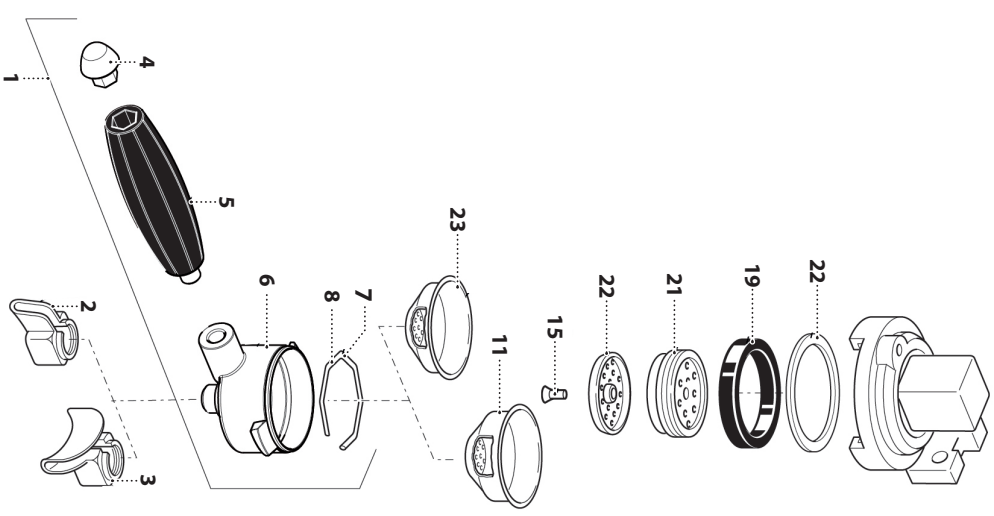
PORTAFILTRO  
PORTAFILTER



PORTAFILTRO PER CAPSULA F.A.P  
F.A.P. CAPSULE PORTAFILTER



PORTAFILTRO PER CIALDA  
POD PORTAFILTER



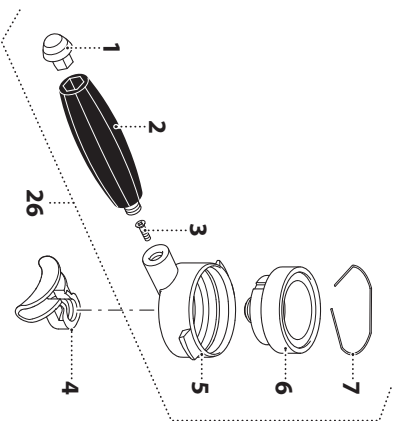


### PORTAFILTRO • PORTAFILTER

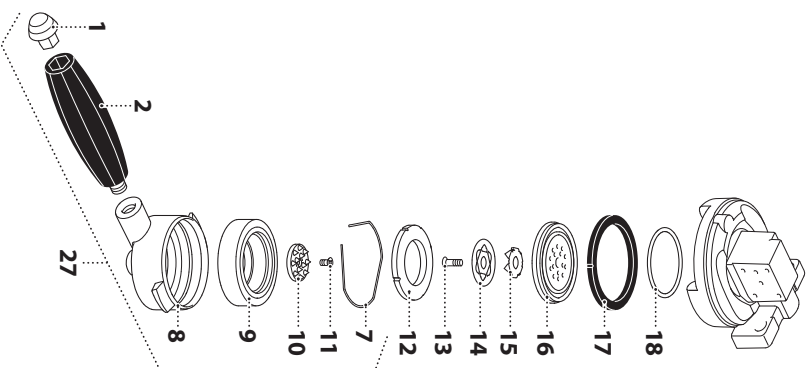
N°	COD.	DESCRIZIONE	DESCRIPTION
1	10792	PORTAFILTRO COMPLETO 2011	COMPLETE PORTAFILTER 2011
1	10799	PORTAFILTRO COMPLETO BASSO 2011	COMPLETE SHORT PORTAFILTER 2011
1	12387	PORTAFILTRO COMPLETO 2011 (GOLD)	COMPLETE PORTAFILTER 2011 (GOLD)
2	656	BECCUCCIO UN CAFFE	1-CUP SPOUT
3	654	BECCUCCIO DUE CAFFE	2-CUPS SPOUT
4	10794	INSERTO CROMO MANOPOLA PORTAFILTRO	CHROMED INSERT FOR PORTAFILTER KNOB
4	12399	INSERTO MANOPOLA PORTAFILTRO (GOLD)	PORTAFILTER HANDLE INSERT (GOLD)
5	10793	MANOPOLA PORTAFILTRO	PORTAFILTER KNOB
6	2891	PORTAFILTRO CROMATO (STD)	SHORT CHROMED PORTAFILTER (STD)
6	5029	PORTAFILTRO CROMATO (BASSO)	CHROMED SHORT PORTAFILTER (SHORT)
7	649	MOLLA FERMA FILTRO 1,2 MM	FILTER STOP SPRING 1.2 MM
8	13421	MOLLA FERMA FILTRO Ø 1,4 MM (CALDA SINGOLA)	FILTER STOP SPRING Ø 1.4 MM (SINGLE POD)
9	647	FILTRO CIECO	BLIND FILTER
10	645	FILTRO 2 CAFFE' (STD)	2-CUPS FILTER (STD)
10	1943	FILTRO 2 CAFFE' (BASSO)	2-CUPS FILTER (SHORT)
10	2266	FILTRO 2 CAFFE' (FORI PICCOLI)	2-CUPS FILTER (SMALL HOLES)
11	646	FILTRO 1 CAFFE' (STD)	1-CUP FILTER (STD)
11	1944	FILTRO 1 CAFFE' (FORI PICCOLI)	1-CUP FILTER (SMALL HOLES)
11	1945	FILTRO 1 CAFFE' (BASSO)	1-CUP FILTER (SHORT)
12	11284	PORTAFILTRO COMPLETO PER CAPSULA CON SUPPORTO	COMPLETE PORTAFILTER FOR CAPSULE WITH SUPPORT
13	9945	CORPO PORTAFILTRO PER CAPSULA	PORTAFILTER BODY FOR CAPSULE
14	10013	SUPPORTO CAPSULA FAP	SUPPORT FOR CAPSULE FAP
15	4571	VITE INOX 5X20	STAINLESS STEEL SCREW 5X20
16	9978	GUARNIZIONE PER CAPSULA FAP	GASKET FOR CAPSULE FAP
17	9980	GUARNIZIONE PER CAPSULA FAP	GASKET FOR CAPSULE FAP
18	1631	GUARNIZIONE 3125 OR 31.42X2.62	O-RING 3125 31.42X2.62
19	1968	GUARNIZIONE SOTTOCOPPA SPESSORE 6,7 MM	GROUP HEAD GASKET THICK. 6.7 MM
19	1939	GUARNIZIONE SOTTOCOPPA SPESSORE 6,3 MM (STD)	GROUPHEAD GASKET THICK. 6.3 MM (STD)
20	638	GUARNIZIONE SPESSORE 0,5 MM	0.5 MM GASKET
20	639	GUARNIZIONE SPESSORE 1 MM	1 MM GASKET
21	4570	PORTADOCLETTE PER CALDA	SHOWER HOLDER FOR COFFEE POD
22	4562	DIFFUSORE PER CAPSULA	DISPERSOR BLOCK FOR CAPSULE
23	4561	FILTRO PER CALDA (SINGOLA)	COFFEE POD FILTER (SINGLE)

PORTAFILTRO • PORTAFILTER

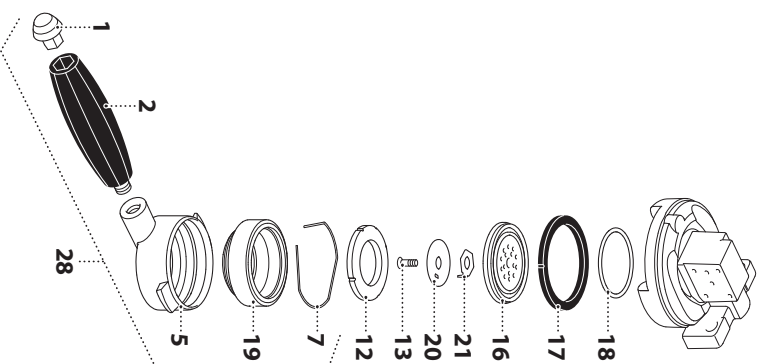
PORTAFILTRO CAPSULA DOPPIA F.A.P  
F.A.P. DOUBLE CAPSULE PORTAFILTER



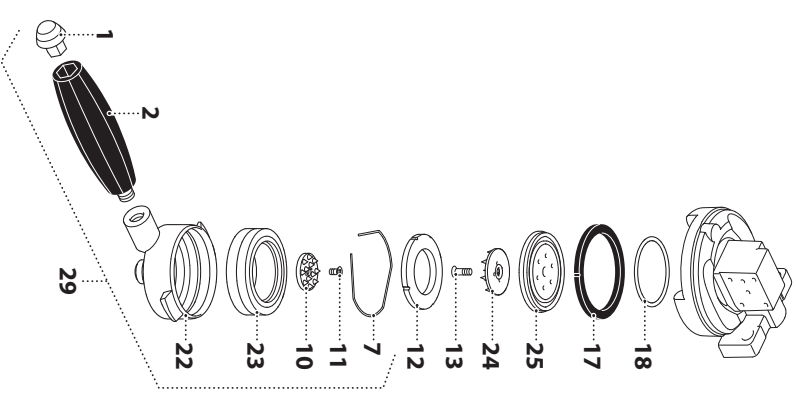
PORTAFILTRO CAPSULA A MODO MIO  
A MODO MIO CAPSULE PORTAFILTER



PORTAFILTRO CAPSULA DOLCE GUSTO  
DOLCE GUSTO CAPSULE PORTAFILTER

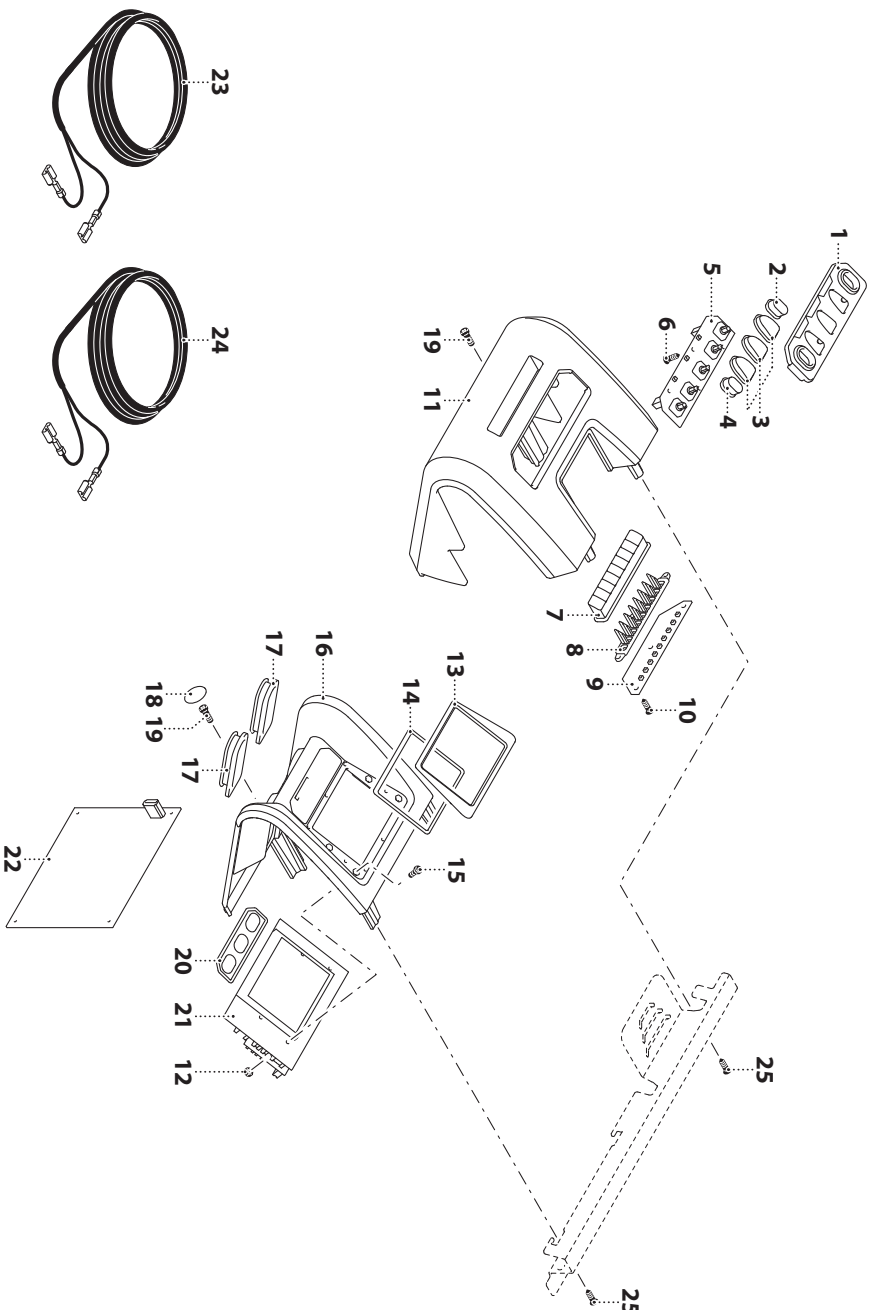


PORTAFILTRO CAPSULA LAVAZZA BLUE  
LAVAZZA BLUE CAPSULE PORTAFILTER





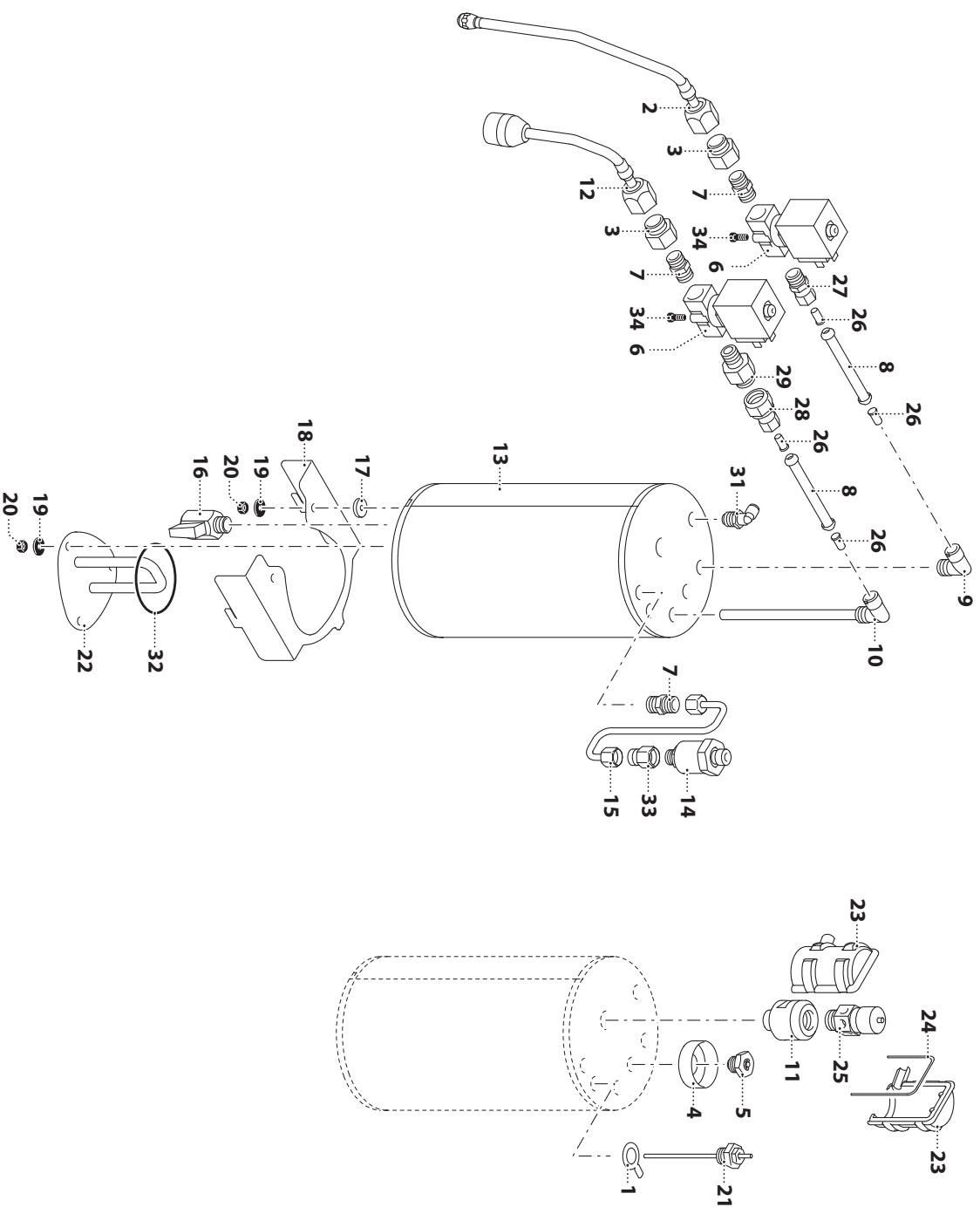
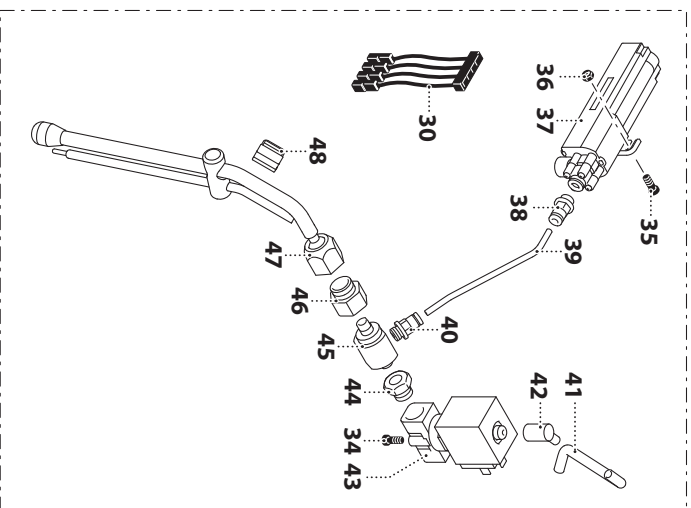
PULSANTIERA - DISPLAY • PUSH-BUTTON PANEL - DISPLAY





BOILER SERVIZI • STEAM AND HOT WATER BOILER

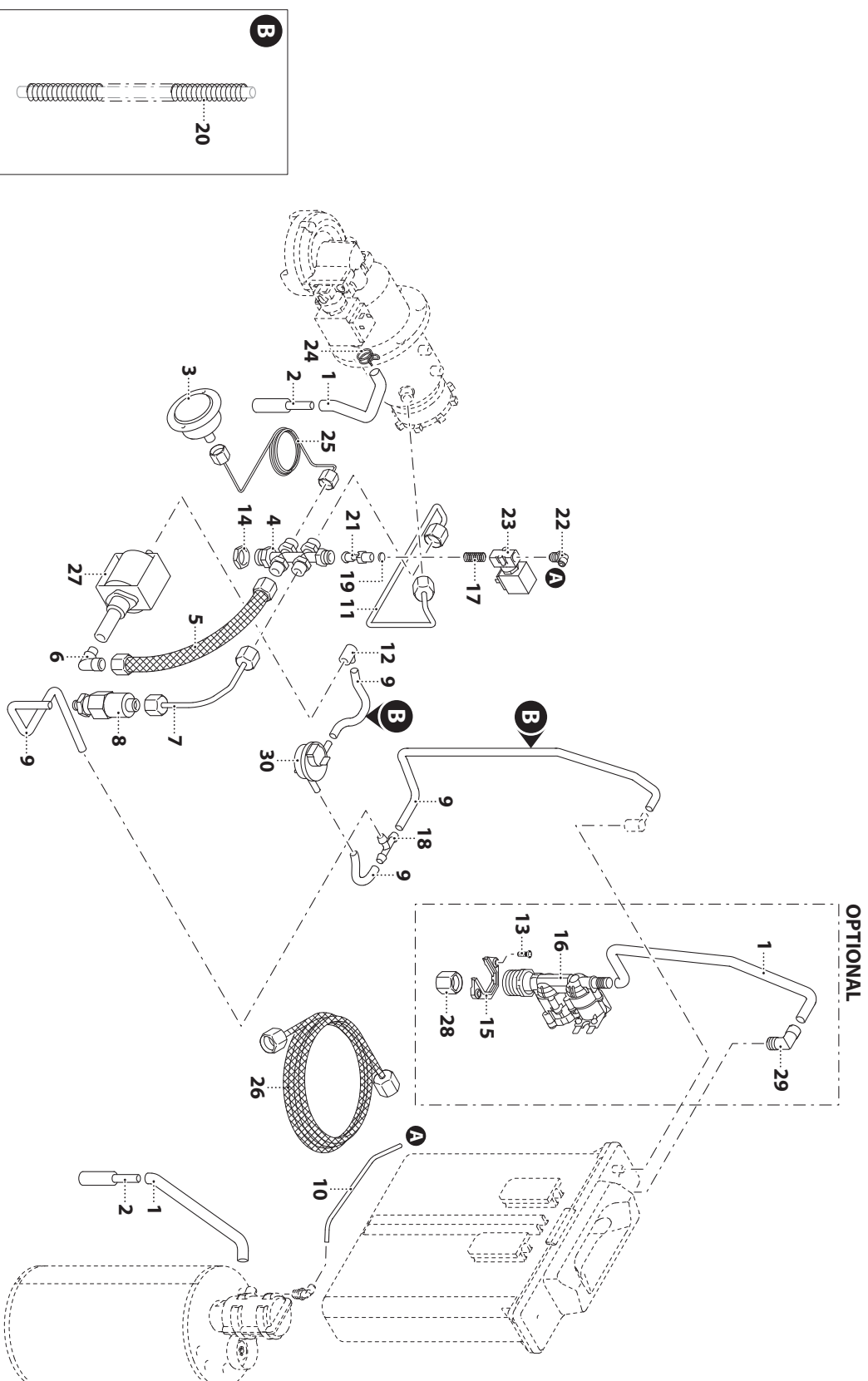
M.A.T.



### BOILER SERVIZI • STEAM AND HOT WATER BOILER

N°	COD.	DESCRIZIONE	DESCRIPTION	N°	COD.	DESCRIZIONE	DESCRIPTION
1	12982	ANELLO MASSA SONDA LIVELLO	LEVEL PROBE MASS RING	44	14092	MANICOTTO 1/8" F-1/4" M	SLEEVE 1/8" F-1/4M
2	12901	TUBO VAPORE SNODATO	ARTICULATED STEAM TUBE	45	15003	ASPIRATORE ORIENT. D=2MM M.A.T.	ADJUSTABLE SUCTION D=2MM M.A.T.
3	12086	ADATTATORE 1/4F- 3/8M	ADAPTER 1/4F- 3/8M	46	12086	ADATTATORE 1/4F- 3/8M	ADAPTER 1/4F- 3/8M
4	5124	COMPL. MANOPOLA ANODIZ. NERA	BLACK ANODIZED BACK PART FOR KNOB	47	12937	LAMICIA VAPORE M.A.T	STEAM WAND M.A.T
5	508	VALVOLINO DEPRESSIONE	DEPRESSION VALVE	48	1781	MANIGLIETTA PER TUBO VAPORE	HANDLE FOR STEAM WAND
6	4843	EV 2 VIE 1/4-1/4 24V/50-60HZ	EV 2 VIE 1/4-1/4 24V/50-60HZ				
7	668	NIPLES 1/4"	NIPPLE 1/4"				
8	7140	TUBO TEFLON 8 X 6	TEFLON HOSE 8 X 6				
9	7142	RACCORDO AD ANGOLO MASCHIO 1/4"	MALE ELBOW FITTING 1/4"				
10	12912	TUBO PESCANTE A L. BOILER SERVIZI	L. IMMERSED TUBE HOT WATER AND STEAM BOILER				
11	12893	ADATTATORE VALVOLA SICUREZZA 3/8"	SAFETY VALVE ADAPTER 3/8"				
12	12902	TUBO SCARICO ACQUA	WATER DRAIN TUBE				
13	12911	BOILER SERVIZI	BOILER				
14	12910	TRASDUTTORE PRESSIONE	PRESSURE TRANSDUCER				
15	13004	TUBO TRASDUTTORE DI PRESSIONE	PRESSURE TRANSDUCER TUBE				
16	924	RUBINETTO A SFERRA 1/4" M/F	BALL TAP 1/4" M/F				
17	221	GUARNIZIONE D.14	GASKET D.14				
18	15252	PIASTRA SUPPORTO BOILER SERVIZI	SUPPORT BOILER PLATE				
19	1746	RONDELLA PIANA 6 X 12	FLAT WASHER 6 X 12				
20	815	SONDA ESAGONALE M6	HEX NUT M6				
21	6357	SONDA CONTROLLO LIVELLO	LEVEL CONTROL PROBE				
22	12904	RESISTENZA 230V-1200W	HEATING ELEMENT 230 V - 1200 W				
22	15297	RESISTENZA 110V - 1200W	HEATING ELEMENT 110V - 1200W				
23	12736	PROTEZIONE VALVOLA DI SICUREZZA	SAFETY VALVE PROTECTION				
24	12734	GUARNIZ. VALV. SICUREZZA	GASKET VALVE PROTECTION				
25	381	VALVOLA SICUREZZA 3/8	SAFETY VALVE 3/8				
26	7141	BUSSOLA DI RINFORZO	REINFORCING BUSH				
27	13009	RACCORDO DRITTO TUBO 8 1/4 MASCHIO	1/4 MALE STRAIGHT COUPLING FOR 8MM TUBE				
28	9575	RACCORDO CILINDRICO DRITTO	STRAIGHT CYLINDRICAL FITTING				
29	15504	ADATTATORE RUBINETTO 1/4M-3/8M	ADAPTER FOR TAP 1/4M-3/8M				
30	15015	CABLAGGIO VALVOLA PROPORZIONALE ARIA M.A.T.	MILK PROBE AIR PROPORTIONAL VALVE WIRING				
31	9824	GOMITO MASCHIO 1/4"	MALE ELBOW 1/4"				
32	12905	OR RESISTENZA BOILER	O RING FOR BOILER WARMER HEATING				
33	8988	FLANCO INTERNO SINISTRO TAKE AWAY	TAKE AWAY LEFT INSIDE SIDE PANEL				
34	1881	VITE TESTA ESAGONALE 4 X 8 ZINCATO	GALVANIZED HEXAGONAL SCREW 4X8				
35	2333	VITE TESTA CILINDRICA A GROCE 4X12	HEAD CAP SCREW TO 4X12				
36	5686	DADO FLANGIATO M4 4,8 ZINCATO	GALVANIZED FLANGE NUT M4 4,8				
37	15004	VALVOLA PROPORZIONALE ARIA M.A.T.	M.A.T. AIR PROPORTIONAL VALVE				
38	15002	RACCORDO DRITTO 4/6	STRAIGHT FITTING 4/6				
39	8777	TUBO TEFLON 4 X 2,5 CALIBRATO	CALIBRATED TEFLON PIPE 4 X 2.5				
40	8851	RACCORDO DRITTO 1/8" MASCHIO	STRAIGHT MALE FITTING 1/8"				
41	838	TUBETTO GOMMA/SILICONE 5 X 8	SILICONE/RUBBER HOSE 5X8				
42	11583	COUDE BECCUCCIO CAFFE'	COFFEE SPOUT END				
43	4997	EV 3VIE 12V/ 50-60HZ	EV 3VIE 12V/ 50-60HZ				

IMPIANTO IDRICO • WATER SYSTEM



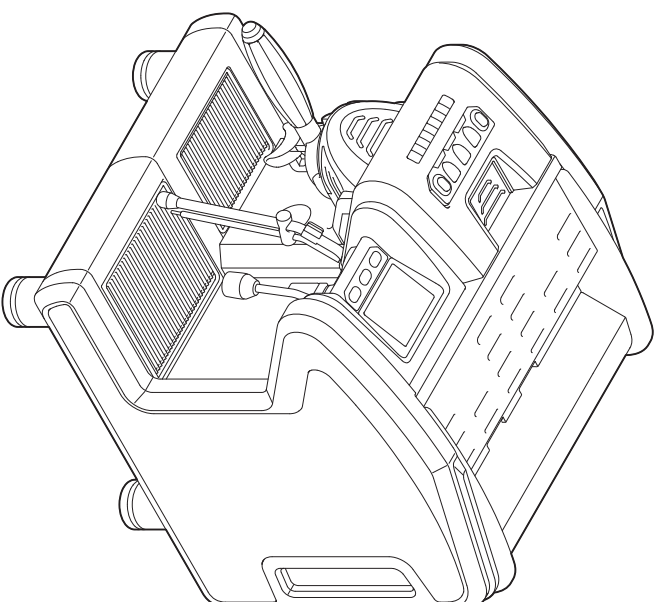






**laSpaziale**

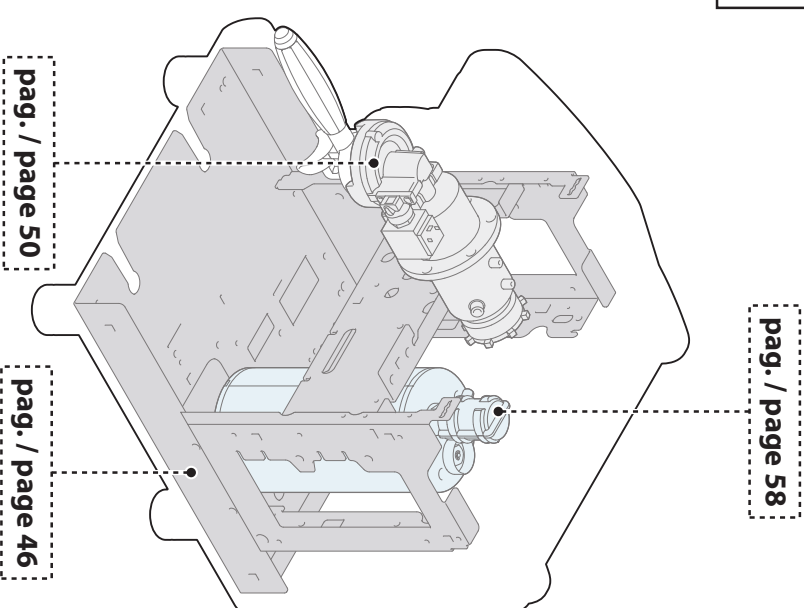
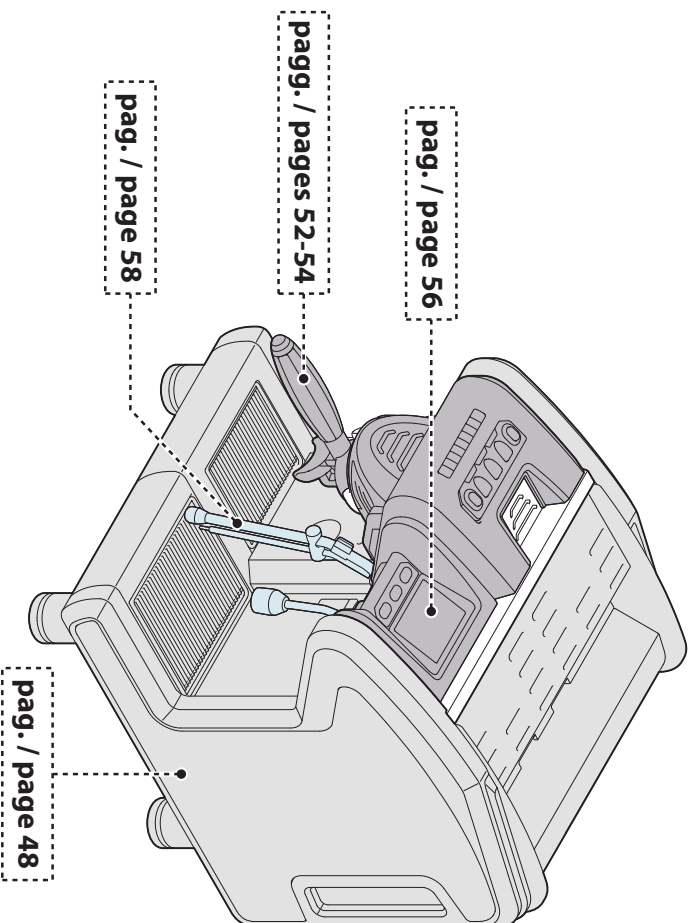
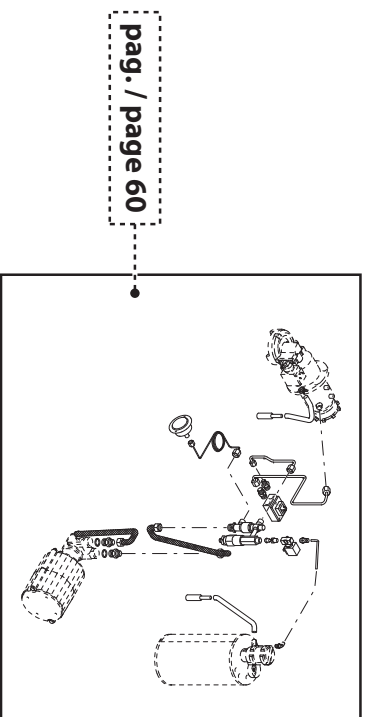
espresso coffee machines



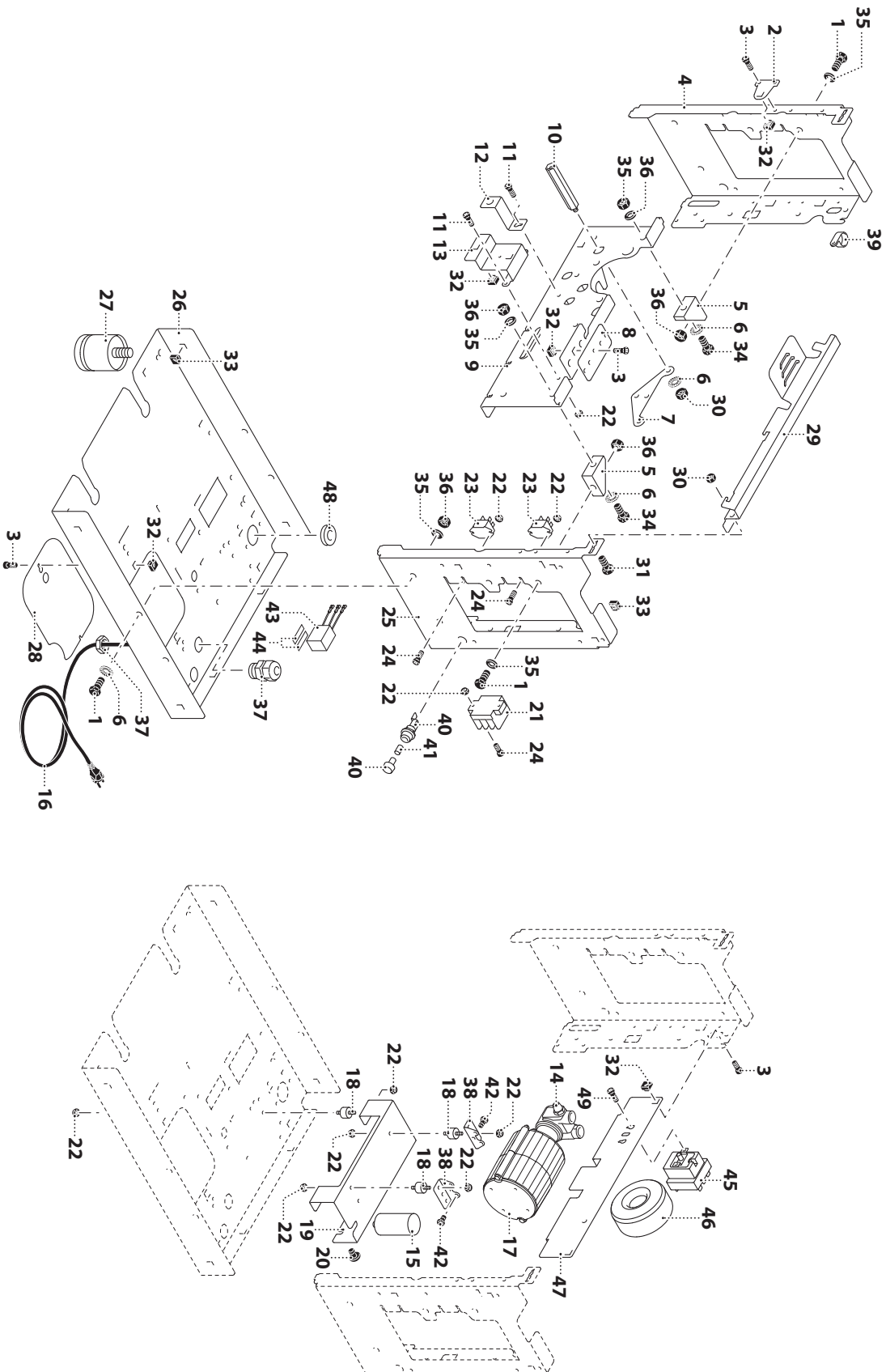
**S11**  
BRIO

CATALOGO PARTI DI RICAMBIO • SPARE PARTS LIST





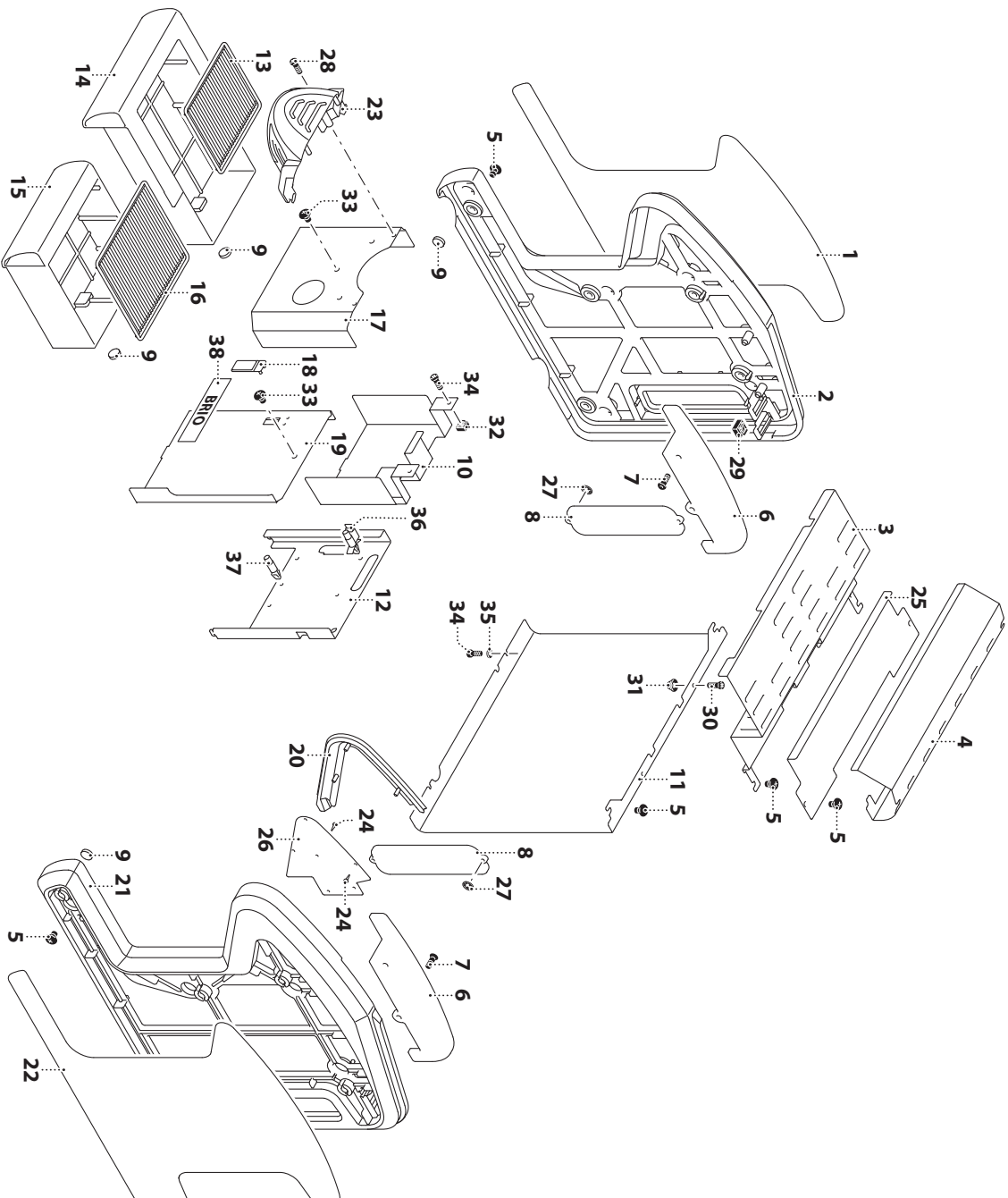
STRUTTURA DI BASE • BASE STRUCTURE



### STRUTTURA DI BASE • BASE STRUCTURE

N°	COD.	DESCRIZIONE	DESCRIPTION	N°	COD.	DESCRIZIONE	DESCRIPTION
1	1747	VITE TESTA ESAGONALE 8 X 20 ZINCATA	GALVANIZED HEXAGONAL SCREW 8X20	43	14192	SERIE FILTRI CABLATTI (NO UL)	SERIES OF CABLED FILTERS (NO UL)
2	15241	PIASTRINA FISSAGGIO MODULO ABS SX	ABS MODULE	44	10012	BLADESIVO 3M VHB HT2	BI-ADHESIVE TAPE 3M VHB HT2
3	2333	VITE TESTA CILINDRICA A GROOVE 4X12	HEAD CAP SCREW TC 4X12	45	8019	TERMOSTATO SICUREZZA (UL/CSA)	SAFETY THERMOSTAT (UL/CSA)
4	15236	FLANCO INTERNO SX	LEFT INSIDE PANEL	46	15431	TRASFORMATORE 230V/24-19VAC	TRANSFORMER 230V/24-19VAC
5	9813	ANGOLARI PER BASAMENTO	BASE ANGLE	47	15515	TRASFORMATA FISSAGGIO TRASFORMATORE	TRANSFORMER SUPPORT
6	2282	RONDELLA DENTELLATA DIAMETRO 8	TOOTH WASHER Ø 8 MM	48	15274	PASSACAVO D.21	CABLE GROMMET D.21
7	15240	PIASTRA COLONNE SOTTOGRUPPO	SUPPORT PLATE	49	1881	VITE TESTA ESAGONALE 4 X 8 ZINCATA	GALVANIZED HEXAGONAL SCREW 4X8
8	15245	PIASTRA INOX SUPP. EV.H2O/VAP	INOX PLATE SUPPORT FOR EV.H2O/VAP				
9	15255	FASCIONE	HOLDER PANEL				
10	12896	PERNO M6	PIN M6				
11	5685	VITE TE FLANGIATA 5 X 12	FLANGED HEXAGONAL HEAD SCREW 5X12 GALVANIZED				
12	15247	STAFEA SUPPORTO MANOMETRO	PRESSURE GAUGE SUPPORT BRACKET				
13	15243	PIASTRINA FISSAGGIO MODULO DISPLAY	DISPLAY MODULE SUPPORT				
14	15275	POMPA 60 L/H	PUMP 60 L/H				
15	5664	CONDENS. 6FMOT.230V/120W STAFEA 4 FOR	CAPAC. 6FMOT.230V/120W 4-HOLE BRACKET				
16	12962	CAVO ALIMENTAZIONE (STD)	SUPPLY CABLE (STD)				
16	7698	CAVO ALIM SPIRA 125V 20°	CABLE+PLUG 125V 20°				
17	15277	MOTORE 100W 230V 50HZ (STD)	MOTOR 100W 230V 50HZ (STD)				
17	15278	MOTORE 100W 110V 60HZ	MOTOR 100W 110V 60HZ				
18	7258	ANTIVIBRANTE 15X10 MM	BUMPER 15X10 MM				
19	15260	PIASTRA SUPPORTO MOTOPOMPA	SUPPORT FOR PUMP MOTOR				
20	1850	VITE TBL. 6 X 15	6X15 TBL SCREW				
21	10026	MORSETTERA 3 POLI	3-POLES TERMINAL BOARD				
22	5686	DADO FLANGIATO M4 4.8 ZINCATO	GALVANIZED FLANGE NUT M4 4.8				
23	9866	RELE STATICO	STATIC RELAY				
24	4336	VITE TC A GROVE 4 X 16	CROSSED HEAD SCREW TC 4X16				
25	15235	FLANCO INTERNO DX	RIGHT INSIDE PANEL				
26	15251	BASE	BASE				
27	15292	PIEDINO INOX	STAINLESS FOOT				
28	12831	PIASTRA PROTEZIONE RESISTENZA BOLLER	BOILER GUARD PLATE				
28	15253	TRAVERSA FISSAGGIO MODULO	PANEL MODULE FIXING TRAVERSE				
30	815	DADO ESAGONALE M6	HEX NUT M6				
31	10950	PERNO M6X20	M6X20 PIN				
32	9887	DADO IN GABBIA M4	CAGE NUT M4				
33	1749	DADO A GABBIA M6	CAGE NUT M6				
34	1928	VITE TESTA ESAGONALE 8 X 25 ZINCATA	GALVANIZED HEXAGONAL SCREW 8X25				
35	416	RONDELLA PIANA DIAMETRO 8 ZINCATA	GALVANIZED FLAT WASHER D.8				
36	1744	DADO ESAGONALE M8	HEX NUT M8				
37	7521	PRESSACAVO + GHIERA PG13,5 NERO	BLACK CABLE GLAND + RING NUT PG13,5				
38	15262	STAFEA SUPPORTO MOTORE MICRO RPM	SUPPORT FOR MOTOR MICRO RPM				
39	15273	COLLARIANO M5	CLAMP M5				
40	13349	PORTAFUSIBILE 30A 250V (UL)	FUSE HOLDER 30A 250V (UL)				
41	9144	FUSIBILE 6.3X32 20A UL	FUSE 6.3X32 20A UL				
42	2142	VITE TE 4 X 6 INOX	HEXAGONAL SCREW M4X6				

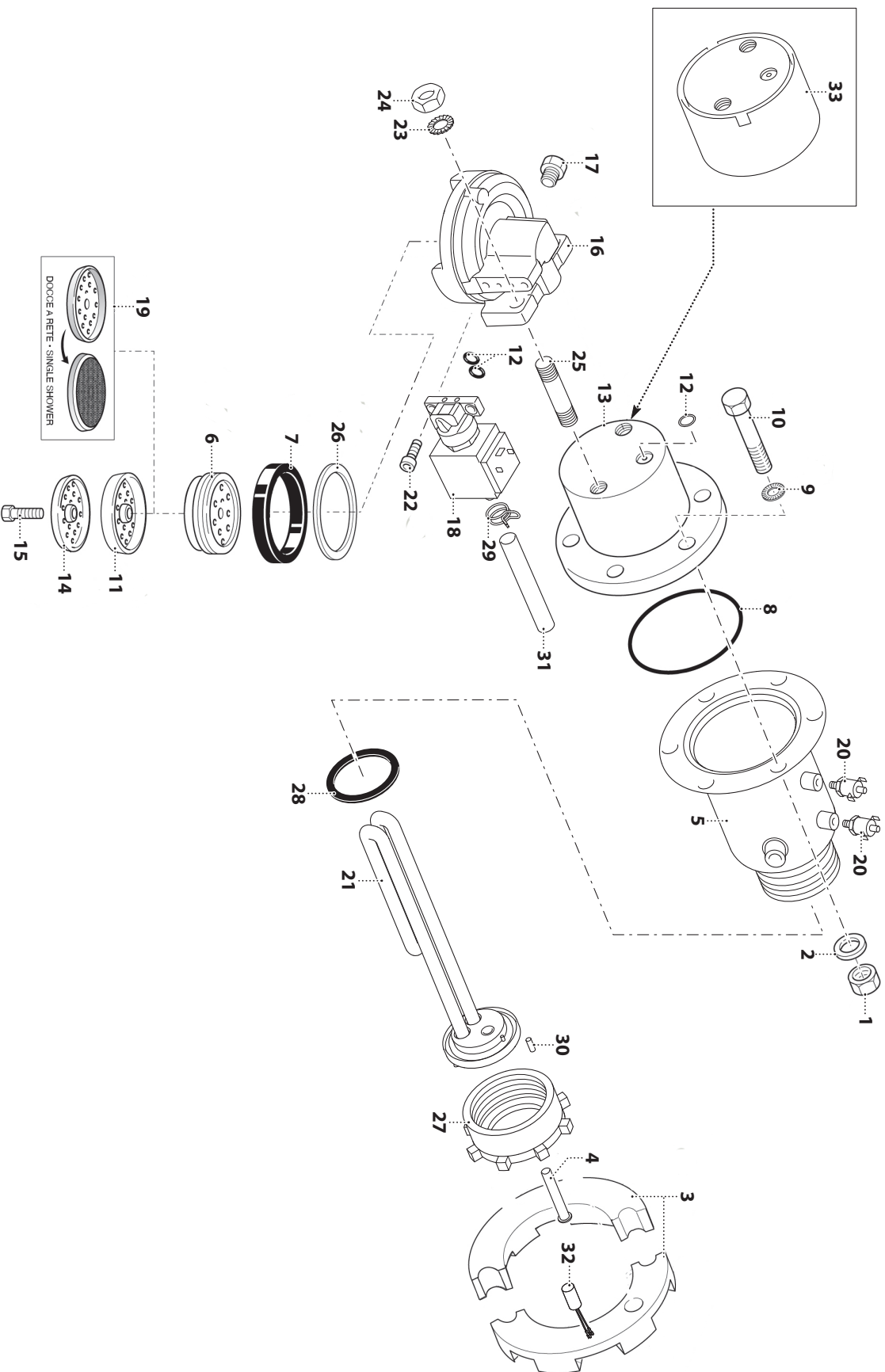
## CARROZZERIA • BODY





N°	COD.	DESCRIZIONE	DESCRIPTION
1	15425	INSERTO INOX SX PER FIANCO ESTERNO	LH STAINLESS STEEL INSERT FOR EXTERNAL SIDE
2	15420	FIANCO ESTERNO ABS SX NERO	ABS EXTERNAL LEFT SIDE PANEL BLACK
3	15258	GRIGLIA APPOGGIATAZZE SUPERIORE	UPPER CUP HOLDER GRID
4	15259	COBERTURA POSTERIORE SUPERIORE	REAR UPPER COVERING
5	1850	VITE TBL 6 X 15	6X15 TBL SCREW
6	12860	VESTRINA LATERALE	SIDE GLASS
7	1937	VITE TC A CROCE AUTOFILETTANTE 3,9 X 9,5	SELF-TAPPING SCREW TC 3.9 X 9.5
8	15284	COMPLETAMENTO FIANCO ABS	COMPLEMENTARY ABS SIDE PANEL
9	12886	MAGNETE NIODIMIO CILINDRICO D8	CYLINDRICAL NEODYMIUM MAGNET D.8
10	15244	PROTEZIONE VANO BACINELLA	TRAY GUARD
11	15256	PANNELLO POSTERIORE INOX	STAINLESS STEEL REAR PANEL
12	15250	PIASTRA SUPPORTO CENTRALINA POTENZA	POWER CONTROL UNIT SUPPORT PLATE
13	12838	GRIGLIA BACINELLA CAFFE'	COFFEE DRIP TRAY GRID
14	12862	BACINELLA CAFFE'	DRIP TRAY COFFEE
15	12864	BACINELLA SERVIZI	DRIP TRAY
16	12839	GRIGLIA BACINELLA SERVIZI	HOT WATER DRIP TRAY GRID
17	15238	PIASTRA INOX SOTTOGRUPPO	STAINLESS SUPPORT PLATE
18	11511	TAPPO CONNETTORE USB	USB PLUG COVER
19	15263	PIASTRA PROTEZIONE CENTRALINA POTENZA	CONTROL UNIT GUARD PLATE
20	15282	COMPLET. DX MODULO ABS DISPLAY NERO	ABS DISPLAY RIGHT PANEL COMPL. BLACK
21	15419	FIANCO ESTERNO ABS DX NERO	ABS EXTERNAL RIGHT SIDE PANEL BLACK
22	15424	INSERTO INOX DX PER FIANCO ESTERNO	RH STAINLESS STEEL INSERT FOR EXTERNAL SIDE
23	15279	COBERTURA GRUPPO	GROUP CAP
24	1946	VITE AUTOFILETTANTE M2,9X9,5	SELF-TAPPING SCREW M2.9X9.5
25	15516	COBERTURA INTERNA SUPERIORE	UPPER INSIDE COVER
26	15264	PIASTRA COMPLET. INTERNO FIANCO DX	PLATE COMPLEMENTARY RIGHT SIDE
27	1243	ANELLO FISSAGGIO PIASTRINA VETRO LIVELLO	FASTENING RING FOR LEVEL GLASS PLATE
28	8823	VITE TC M3X10	SCREW TC M3X10
29	1749	DADO A GABBIA M6	CAGE NUT M6
30	669	VITE TESTA CIL. CAVA ESAGONALE 4X10 INOX	STAINLESS STEEL SCREW 4X10TCCE
31	5686	DADO FLANGIATO M4 4.8 ZINCATO	GALVANIZED FLANGE NUT M4 4.8
32	9887	DADO IN GABBIA M4	CAGE NUT M4
33	15632	VITE	SCREW
34	2333	VITE TESTA CILINDRICA A CROCE 4X12	HEAD CAP SCREW TC 4X12
35	1849	RONDELLA	WASHER
36	9868	DISTANZIATORE CIRCUITO TYPEA	CIRCUIT SPACER TYPEA
37	12947	DISTANZIALE APPOGGIO CENTRALINA	SUPPORT CONTROL UNIT SPACER
38	15627	ADESIVO MELODIA	MELODIA LABEL

### GRUPPO EROGATORE • DELIVERY GROUP

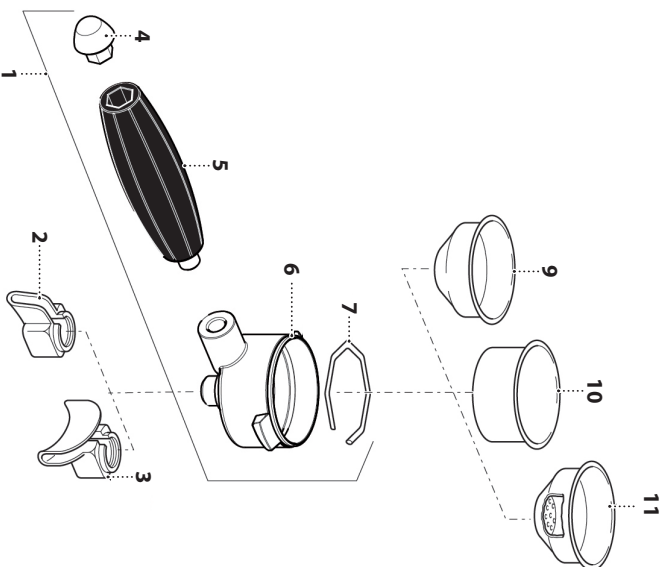


**GRUPPO EROGATORE • DELIVERY GROUP**

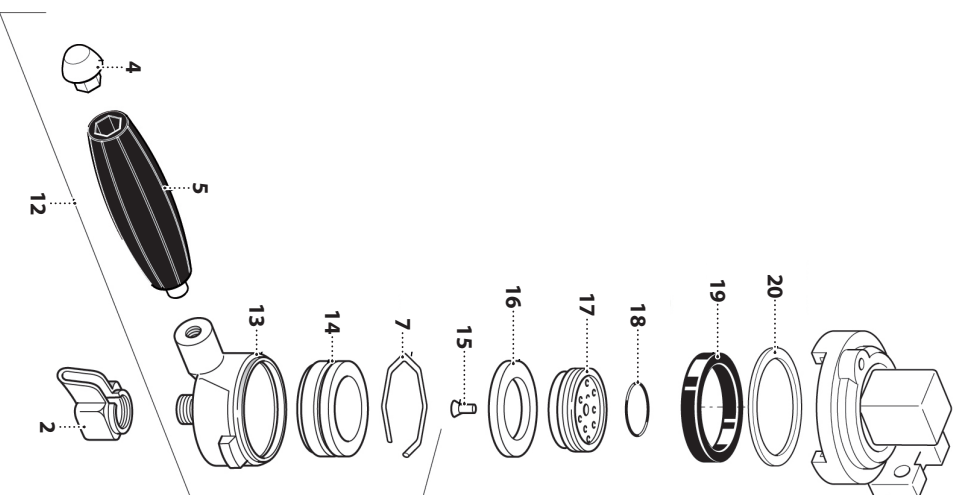
N°	COO.	DESCRIZIONE	DESCRIPTION
1	1744	DADO ESAGONALE M8	HEX NUT M8
2	416	RONDELLA PIANA DIAMETRO 8 ZINCATO	GALVANIZED FLAT WASHER D8
3	407	SEMANELLO ALLUMINIO	ALUMINIUM HALF-RING
4	7483T	TUBO POZZETTO SONDA	DRAIN PIPE FOR PROBE
5	15246T	CALDAIETTA CAFFE' T.E.A.	BOILER COFFEE' T.E.A.
6	1941	PORTADOCCHETTE IN OTTONE H=11	BRASS SHOWER HOLDER H=11
6	641	PORTA DOCCETTA OTTONE H=13 (STD)	SHOWERHEAD HOLDER H=13 (STD)
6	1942	PORTADOCCHETTE IN OTTONE H=15 (ALTO)	BRASS SHOWER HOLDER H=15 (HIGH)
7	1939	GUARNIZIONE SOTTOCOPPA SPESSORE 6,3 MM (STD)	GROUP HEAD GASKET THICK, 6.3 MM (STD)
7	1968	GUARNIZIONE SOTTOCOPPA SPESSORE 6,7 MM	GROUP HEAD GASKET THICK, 6.7 MM
8	2417	GUARNIZIONE OR GRUPPO VITON	GROUP VITON O-RING
9	417	ROSETTA DENTELLATA DIAMETRO 8	TOOTH WASHER EXT. D8
10	418	VITE TESTA ESAGONALE 8X45 ZINCATO	GALVANIZED HEX SCREW 8X45
11	2908	DOCCETTA	UPPER SHOWER
12	625	GUARNIZIONE OR 105 VITON MAGGIORATA	STRONGER O-RING 105 VITON
13	1222T	CAMPANA GRUPPO TEATA	GROUP HEAD BELL (T.E.A.)
14	2909	CONTRODOCCIA	LOWER SHOWER
15	643	VITE TE 5X25 INOX	STAINLESS STEEL HEX 5X25 SCREW
16	15271	CORPO GRUPPO	GROUP BODY
17	490	TAPPO 1/8" M	PLUG 1/8 M
18	15272	ELETTROVALVOLO 3 VIE 24 VAC 90°	3-WAYS SOLENOID VALVE 24VAC 90°
19	2578	DOCCETTA A RETE	NET SHOWER
20	6687	TERMOSTATO SICUREZZA X PROFIELE	SAFETY THERMOSTAT
21	7201	RESISTENZA 230V./1250W	HEATING ELEMENT 230V./1250W
21	7476	RESISTENZA 110V/800W	HEATING ELEMENT 110V/800W
22	15293	VITE M5X14	SCREW M5X14
23	2283	RONDELLA DENTELLATA DIAMETRO 12	TOOTH WASHER Ø 12 MM
24	1219	DADO M10X1,25	M10X1,25 NUT
25	1218	PRIGIONIERO 10 X 35	SCREW STUD 10 X 35
26	638	GUARNIZIONE SPESSORE 0,5 MM	0.5 MM GASKET
26	639	GUARNIZIONE SPESSORE 1 MM	1 MM GASKET
27	7387	GHIERA M52X1,5 PER SCAMBIATORE	RING NUT M52X1,5 FOR HEAT EXCHANGER
28	7418	GUARNIZIONE OR 2.131 FKM 70	O-RING 2.131 FKM 70
29	8351	MOLLA BIFILARE DIAMETRO 12	DOUBLE CLAMP D=12
30	11622	SPINA TEMP 2X6	TEMP. PIN 2X6
31	1377	TUBO SILICONE 7 X 1	SILICON HOSE 7 X 1
32	15299	SONDA TEMPERATURA CALDAIETTA CAFFE'	BOILER COFFEE' TEMPERATURE PROBE
33	15615	FASCIA COIBENTAZIONE CAMPANA GRUPPO	GROUP BELL INSULATION BAND

PORTAFILTRO • PORTAFILTER

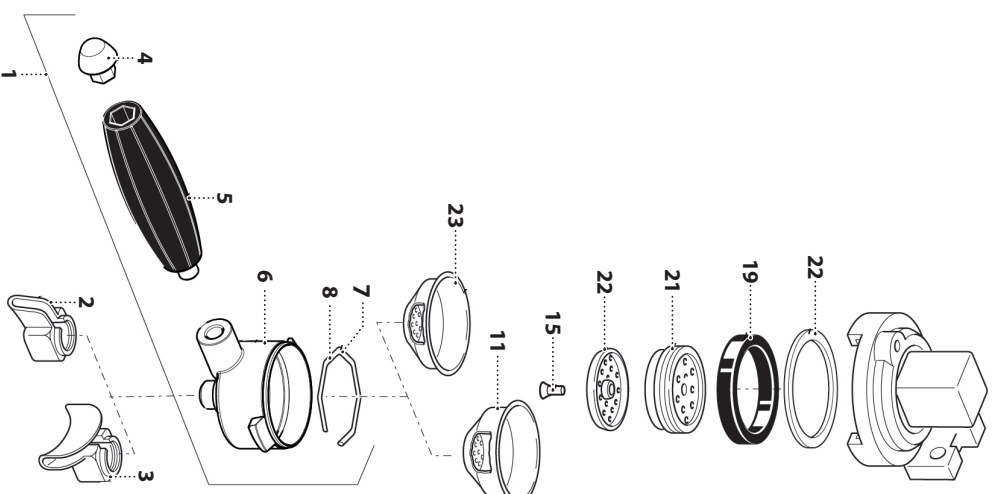
PORTAFILTRO  
PORTAFILTER



PORTAFILTRO PER CAPSULA F.A.P  
F.A.P. CAPSULE PORTAFILTER



PORTAFILTRO PER CIALDA  
POD PORTAFILTER

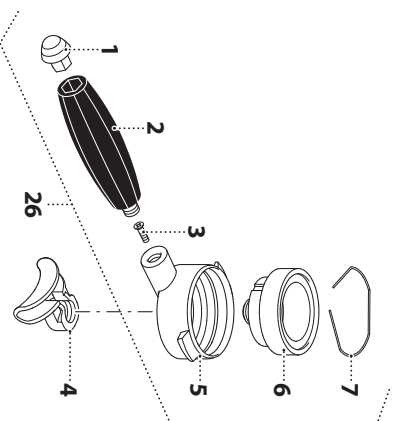


### PORTAFILTRO • PORTAFILTER

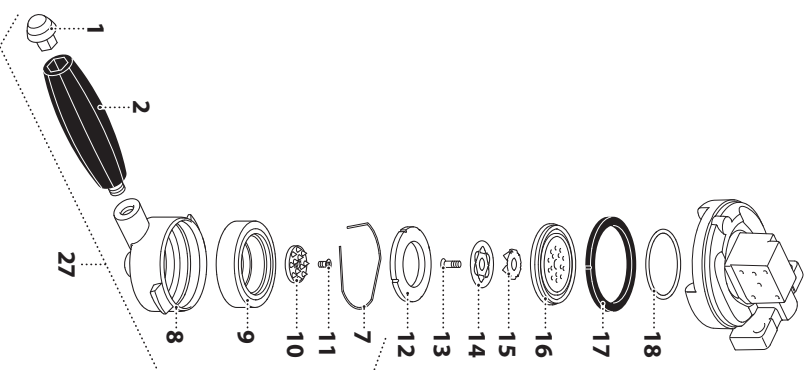
N°	COD.	DESCRIZIONE	DESCRIPTION
1	10792	PORTAFILTRO COMPLETO 2011	COMPLETE PORTAFILTER 2011
1	10799	PORTAFILTRO COMPLETO BASSO 2011	COMPLETE SHORT PORTAFILTER 2011
1	12387	PORTAFILTRO COMPLETO 2011 (GOLD)	COMPLETE PORTAFILTER 2011 (GOLD)
2	656	BECCUCCIO UN CAFFE	1-CUP SPOUT
3	654	BECCUCCIO DUE CAFFE	2-CUPS SPOUT
4	10794	INSERTO CROMO MANOPOLA PORTAFILTRO	CHROMED INSERT FOR PORTAFILTER KNOB
4	12399	INSERTO MANOPOLA PORTAFILTRO (GOLD)	PORTAFILTER HANDLE INSERT (GOLD)
5	10793	MANOPOLA PORTAFILTRO	PORTAFILTER KNOB
6	2891	PORTAFILTRO CROMATO (STD)	SHORT CHROMED PORTAFILTER (STD)
6	5029	PORTAFILTRO CROMATO (BASSO)	CHROMED SHORT PORTAFILTER (SHORT)
7	649	MOLLA FERMA FILTRO 1,2 MM	FILTER STOP SPRING 1.2 MM
8	13421	MOLLA FERMA FILTRO Ø 1,4 MM (CALDA SINGOLA)	FILTER STOP SPRING Ø 1.4 MM (SINGLE POD)
9	647	FILTRO CIECO	BLIND FILTER
10	645	FILTRO 2 CAFFE' (STD)	2-CUPS FILTER (STD)
10	1943	FILTRO 2 CAFFE' (BASSO)	2-CUPS FILTER (SHORT)
10	2266	FILTRO 2 CAFFE' (FORI PICCOLI)	2-CUPS FILTER (SMALL HOLES)
11	646	FILTRO 1 CAFFE' (STD)	1-CUP FILTER (STD)
11	1944	FILTRO 1 CAFFE' (FORI PICCOLI)	1-CUP FILTER (SMALL HOLES)
11	1945	FILTRO 1 CAFFE' (BASSO)	1-CUP FILTER (SHORT)
12	11284	PORTAFILTRO COMPLETO PER CAPSULA CON SUPPORTO	COMPLETE PORTAFILTER FOR CAPSULE WITH SUPPORT
13	9945	CORPO PORTAFILTRO PER CAPSULA	PORTAFILTER BODY FOR CAPSULE
14	10013	SUPPORTO CAPSULA FAP	SUPPORT FOR CAPSULE FAP
15	4571	VITE INOX 5X20	STAINLESS STEEL SCREW 5X20
16	9978	GUARNIZIONE PER CAPSULA FAP	GASKET FOR CAPSULE FAP
17	9980	GUARNIZIONE PER CAPSULA FAP	GASKET FOR CAPSULE FAP
18	1631	GUARNIZIONE 3125 OR 31.42X2.62	O-RING 3125 31.42X2.62
19	1968	GUARNIZIONE SOTTOCOPPA SPESSORE 6,7 MM	GROUP HEAD GASKET THICK. 6.7 MM
19	1939	GUARNIZIONE SOTTOCOPPA SPESSORE 6,3 MM (STD)	GROUPHEAD GASKET THICK. 6.3 MM (STD)
20	638	GUARNIZIONE SPESSORE 0,5 MM	0.5 MM GASKET
20	639	GUARNIZIONE SPESSORE 1 MM	1 MM GASKET
21	4570	PORTADOCLETTE PER CALDA	SHOWER HOLDER FOR COFFEE POD
22	4562	DIFFUSORE PER CAPSULA	DISPERSOR BLOCK FOR CAPSULE
23	4561	FILTRO PER CALDA (SINGOLA)	COFFEE POD FILTER (SINGLE)

PORTAFILTRO • PORTAFILTER

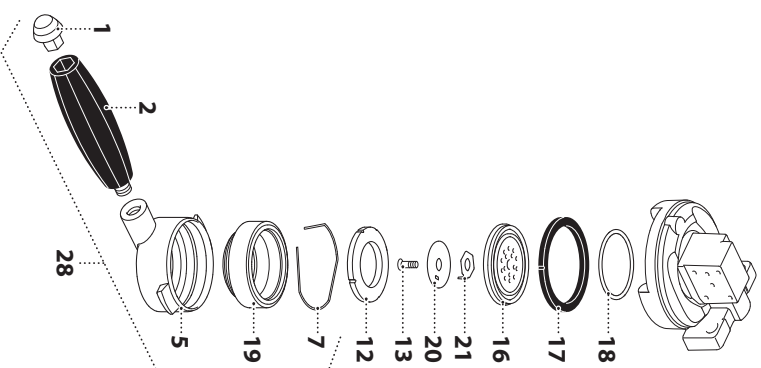
PORTAFILTRO CAPSULA DOPPIA F.A.P  
F.A.P. DOUBLE CAPSULE PORTAFILTER



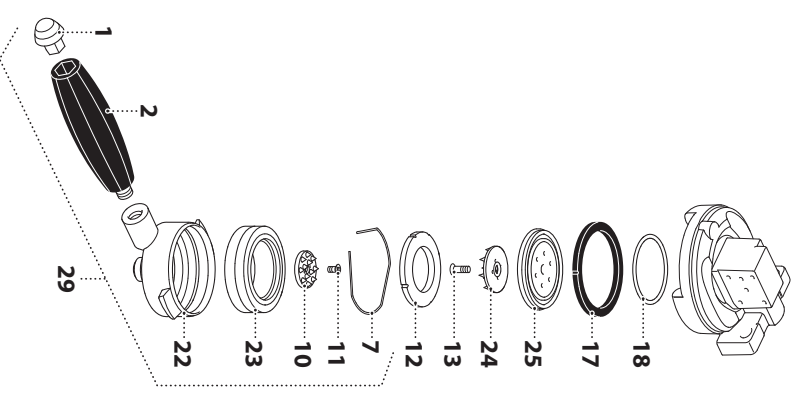
PORTAFILTRO CAPSULA A MODO MIO  
A MODO MIO CAPSULE PORTAFILTER



PORTAFILTRO CAPSULA DOLCE GUSTO  
DOLCE GUSTO CAPSULE PORTAFILTER

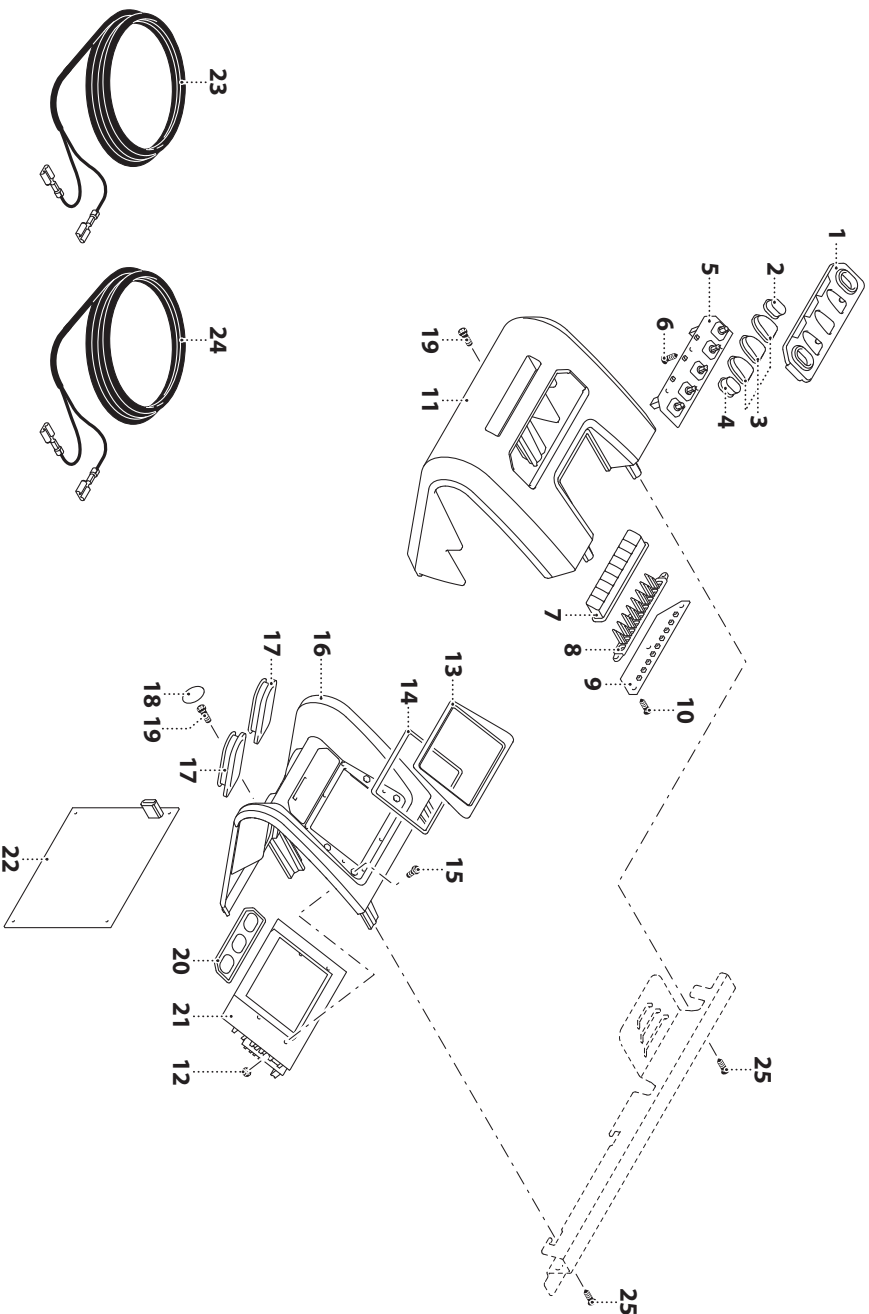


PORTAFILTRO CAPSULA LAVAZZA BLUE  
LAVAZZA BLUE CAPSULE PORTAFILTER





### PULSANTIERA - DISPLAY • PUSH-BUTTON PANEL - DISPLAY

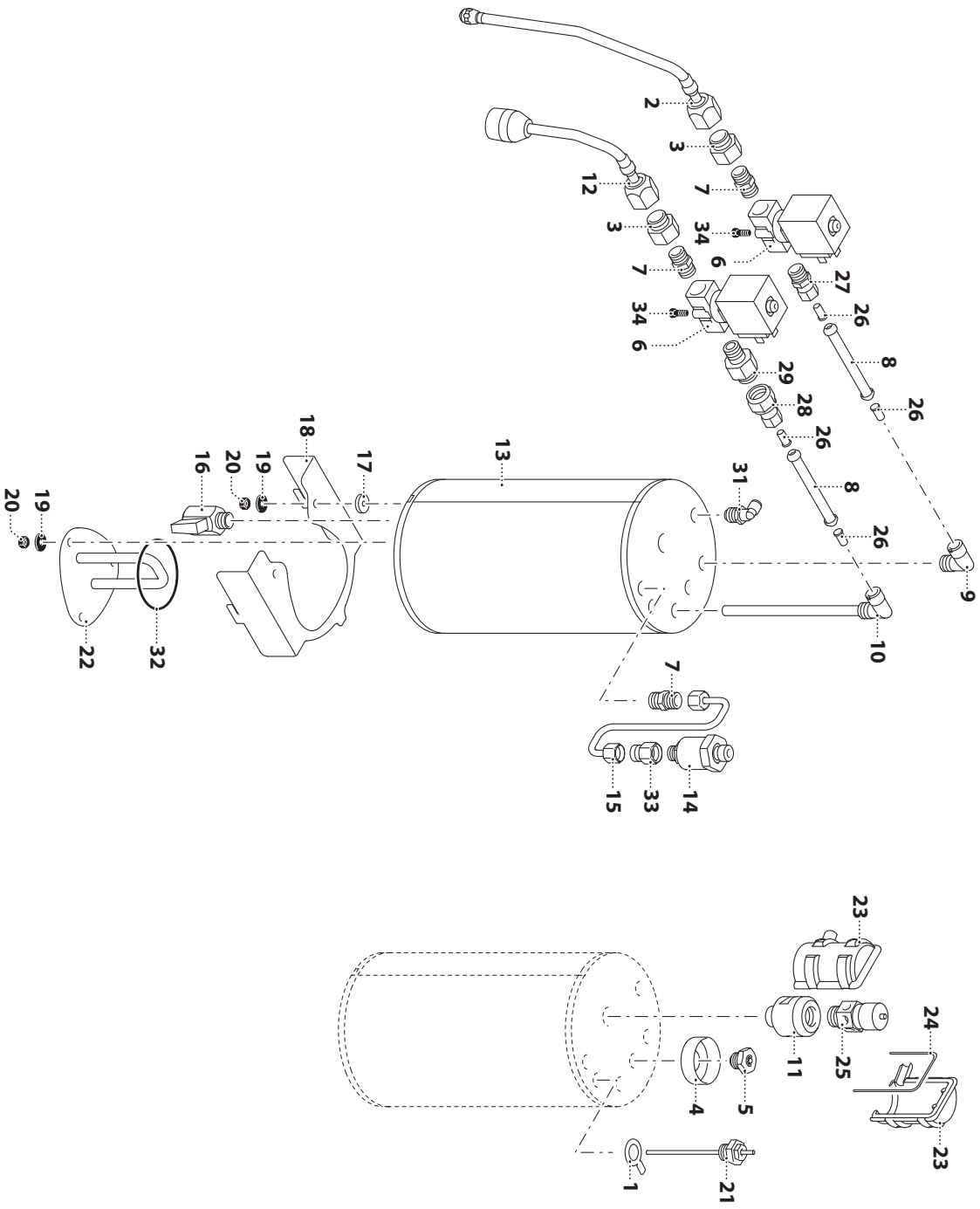
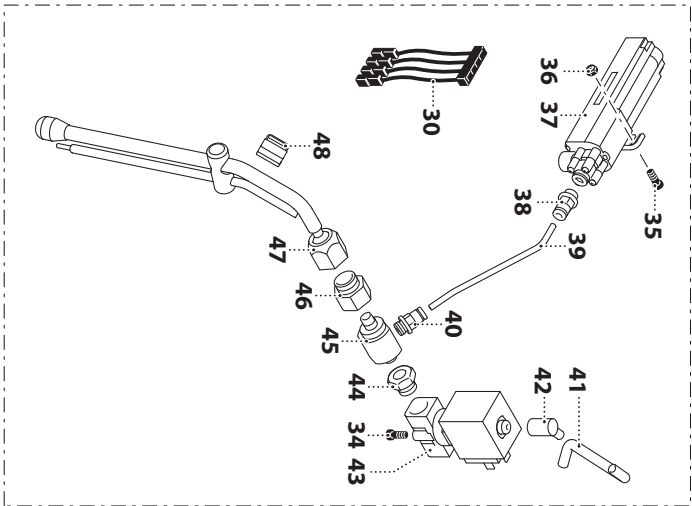






## BOILER SERVIZI • STEAM AND HOT WATER BOILER

M.A.T.



### BOILER SERVIZI • STEAM AND HOT WATER BOILER

N°	COD.	DESCRIZIONE	DESCRIPTION	N°	COD.	DESCRIZIONE	DESCRIPTION
1	12982	ANELLO MASSA SONDA LIVELLO	LEVEL PROBE MASS RING	44	14092	MANICOTTO 1/8" F-1/4" M	SLEEVE 1/8" F-1/4M
2	12901	TUBO VAPORE SNODATO	ARTICULATED STEAM TUBE	45	15003	ASPIRATORE ORIENT. D=2MM M.A.T.	ADJUSTABLE SUCTION D=2MM M.A.T.
3	12086	ADATTATORE 1/4F- 3/8M	ADAPTER 1/4F- 3/8M	46	12086	ADATTATORE 1/4F- 3/8M	ADAPTER 1/4F- 3/8M
4	5124	COMPL. MANOPOLA ANODIZ. NERA	BLACK ANODIZED BACK PART FOR KNOB	47	12937	LAMICIA VAPORE M.A.T	STEAM WAND M.A.T
5	508	VALVOLINO DEPRESSIONE	DEPRESSION VALVE	48	1781	MANIGLIETTA PER TUBO VAPORE	HANDLE FOR STEAM WAND
6	4843	EV 2 VIE 1/4-1/4 24V/50-60HZ	EV 2 VIE 1/4-1/4 24V/50-60HZ				
7	668	NIPLES 1/4"	NIPPLE 1/4"				
8	7140	TUBO TEFLON 8 X 6	TEFLON HOSE 8 X 6				
9	7142	RACCORDO AD ANGOLO MASCHIO 1/4"	MALE ELBOW FITTING 1/4"				
10	12912	TUBO PESCANTE A L. BOILER SERVIZI	LIMMERSED TUBE-HOT WATER AND STEAM BOILER				
11	12893	ADATTATORE VALVOLA SICUREZZA 3/8"	SAFETY VALVE ADAPTER 3/8"				
12	12902	TUBO SCARICO ACQUA	WATER DRAIN TUBE				
13	12911	BOILER SERVIZI	BOILER				
14	12910	TRASDUTTORE PRESSIONE	PRESSURE TRANSDUCER				
15	13004	TUBO TRASDUTTORE DI PRESSIONE	PRESSURE TRANSDUCER TUBE				
16	924	RUBINETTO A SFERRA 1/4" M/F	BALL TAP 1/4" M/F				
17	221	GUARNIZIONE D.14	GASKET D.14				
18	15252	PIASTRA SUPPORTO BOILER SERVIZI	SUPPORT BOILER PLATE				
19	1746	RONDELLA PIANA 6 X 12	FLAT WASHER 6 X 12				
20	815	SONDA ESAGONALE M6	HEX NUT M6				
21	6357	SONDA CONTROLLO LIVELLO	LEVEL CONTROL PROBE				
22	12904	RESISTENZA 230V-1200W	HEATING ELEMENT 230 V - 1200 W				
22	15297	RESISTENZA 110V - 1200W	HEATING ELEMENT 110V - 1200W				
23	12736	PROTEZIONE VALVOLA DI SICUREZZA	SAFETY VALVE PROTECTION				
24	12734	GUARNIZ. VALV. SICUREZZA	GASKET VALVE PROTECTION				
25	381	VALVOLA SICUREZZA 3/8	SAFETY VALVE 3/8				
26	7141	BUSSOLA DI RINFORZO	REINFORCING BUSH				
27	13009	RACCORDO DRITTO TUBO 8 1/4 MASCHIO	1/4 MALE STRAIGHT COUPLING FOR 8MM TUBE				
28	9575	RACCORDO CILINDRICO DIRITTO	STRAIGHT CYLINDRICAL FITTING				
29	15504	ADATTATORE RUBINETTO 1/4M-3/8M	ADAPTER FOR TAP 1/4M-3/8M				
30	15015	CABLAGGIO VALVOLA PROPORZIONALE ARIAMAT.	MILK PROBE AIR PROPORTIONAL VALVE WIRING				
31	9824	GOMITO MASCHIO 1/4"	MALE ELBOW 1/4"				
32	12905	OR RESISTENZA BOILER	O RING FOR BOILER WARMER HEATING				
33	8988	FLANCO INTERNO SINISTRO TAKE AWAY	TAKE AWAY LEFT INSIDE SIDE PANEL				
34	1881	VITE TESTA ESAGONALE 4 X 8 ZINCATO	GALVANIZED HEXAGONAL SCREW 4X8				
35	2333	VITE TESTA CILINDRICA A GROCE 4X12	HEAD CAP SCREW TO 4X12				
36	5686	DADO FLANGIATO M4 4,8 ZINCATO	GALVANIZED FLANGE NUT M4 4,8				
37	15004	VALVOLA PROPORZIONALE ARIA M.A.T.	M.A.T. AIR PROPORTIONAL VALVE				
38	15002	RACCORDO DRITTO 4/6	STRAIGHT FITTING 4/6				
39	8777	TUBO TEFLON 4 X 2,5 CALIBRATO	CALIBRATED TEFLON PIPE 4 X 2.5				
40	8851	RACCORDO DRITTO 1/8" MASCHIO	STRAIGHT MALE FITTING 1/8"				
41	838	TUBETTO GOMMA/SILICONE 5 X 8	SILICONE/RUBBER HOSE 5X8				
42	11583	COUDE BECCUCCIO CAFFE'	COFFEE SPOUT END				
43	4997	EV 3VIE 12V/ 50-60HZ	EV 3VIE 12V/ 50-60HZ				



### IMPIANTO IDRICO • WATER SYSTEM

N°	COD.	DESCRIZIONE	DESCRIPTION	N°	COD.	DESCRIZIONE	DESCRIPTION
1	1377	TUBO SILICONE 7 X 1	SILICON HOSE 7 X 1				
2	15268	SCARICO ROMPIGETTO	JET BREAKET				
3	12481	MANOMETRO	PRESSURE GAUGE				
4	15270	TUBO ENTRATA CONT. VOL.	VOLUMETRIC FLOWMETER INLET PIPE				
5	1516	NIPPLES 1/4"-1/8" PER CONTATORE VOL.	NIPPLE 1/4" -1/8" FOR VOL. FLOWMETER				
6	15269	TUBO USCITA CONT. VOL.	VOL. FLOWMETER OUTLET PIPE				
7	8364	NIPPLES 1/4" CONTATORE VOL.	NIPPLE 1/4" FOR VOL.FLOWMETER				
8	2498	CONTATORE VOLUMETRICO	VOLUMETRIC FLOWMETER				
9	8777	TUBO TEFLON 4 X 2,5 CALBRATO	CALBRATED TEFLON PIPE 4 X 2.5				
10	8851	RACCORDO DRITTO 1/8" MASCHIO	STRAIGHT MALE FITTING 1/8"				
11	1589	MOLLA PROTEZ. TUBO SILICONE	SILICON PIPE PROT. SPRING				
12	8753	TUBO FLEX 3/8" F X 3/8" FC 160CM (STD)	FLEXIBLE HOSE 3/8" F X 3/8" FC160CM (STD)				
13	1471	GUARNIZIONE OR 121 VITON	O-RING 121 VITON				
14	15287	NIPLES POMPA 3/8" F - 1/4" M	NIPPLE POMPA 3/8" F - 1/4" M				
15	8976	TUBO FLEX 3/8" FC 3/8" FC 180° 31CM	FLEXIBLE HOSE 3/8" FC 3/8" FC 180° 31CM				
16	1625	MOLLA GIGLEUR	GIGLEUR SPRING				
17	7542	TUBO ELETTROVALVOLA LIVELLO	LEVEL SOLENOID VALVE PIPE				
18	8351	MOLLA BIFILARE DIAMETRO 12	DOUBLE CLAMP D=12				
19	3272	TUBO MANOMETRO ACQUA	WATER PRESSURE GAUGE PIPE				
20	1470	GUARNIZIONE OR 114 VITON	O-RING 114 VITON				
21	275	FILTRO	FILTER				
22	8837	GIGLEUR ALIMENTAZIONE GRUPPO F=0,7	GROUP SUPPLYING GIGLEUR F=0.7				
23	4595	GUARNIZIONE TEFLON PER GIGLEUR	TEFLON GASKET FOR GIGLEUR				
24	242	GHIERA 3/8 SPESSORE 5 MM	RING-NUT 3/8" THICKNESS 5				
25	1472	GUARNIZIONE OR 115 VITON R10	O-RING 115 VITON R10				
26	279	MOLLA VALVOLA NON RITORNO	NON RETURN VALVE SPRING				
27	280	VALVOLINO NON RITORNO	NON RETURN VALVE				
28	281	GUARNIZIONE OR 107 VITON	107 VITON O-RING				
29	1397	CORPO VALVOLA RITEGNO	NON RETURN VALVE BODY				
30	2639	TUBO COLLETTOR ALIMENTAZIONE COMPACTEK	COMPACT EK FEEDING COLLECTOR PIPE				
31	1569	CORPO VALVOLA ESPANSIONE	EXPANSION VALVE BODY				
32	290	GUARNIZIONE TENUTA	TIGHT GASKET				
33	291	PORTAGUARNIZIONE	GASKET HOLDER				
34	292	MOLLA PER VALVOLA DI ESPANSIONE	EXPANSION VALVE SPRING				
35	1471	GUARNIZIONE OR 121 VITON	O-RING 121 VITON				
36	1570	REGISTRO VALVOLA ESPANSIONE	EXPANSION VALVE REGISTER				
37	1626	VALVOLA ESPANSIONE COMPLETA	COMPLETE EXPANSION VALVE				
38	15275	POMPA 60 LH	PUMP 60 LH				
39	15277	MOTORE 100W 230V 50HZ (STD)	MOTOR 100W 230V 50HZ (STD)				
39	15278	MOTORE 100W 110V 60HZ	MOTOR 100W 110V 60HZ				
40	9383	EV 2 VIE 1/8" 24V 50HZ (STD)	2-WAYS SOLENOID VALVE 1/8" 24V 50HZ (STD)				
40	15821	EV 2 VIE 1/8" 24V 60HZ (UL)	2-WAYS SOLENOID VALVE 1/8" 24V 60HZ (UL)				







espresso coffee machines

**LA SPAZIALE S.p.A.**

Via Eleonora Duse, 8

40033 Casalecchio di Reno (BO) ITALY

Tel +39 051 6111011 - Fax +39 051 6111040

info@laspaziale.com - www.laspaziale.com

