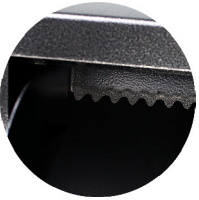
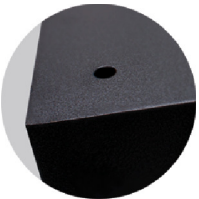
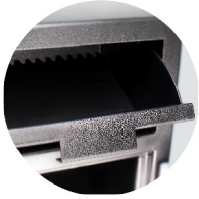


MFL2714ILKE

MFL SERIES CASH MANAGEMENT BUSINESS SAFES



SPECIFICATIONS

EXTERIOR [HWD]	INTERIOR [HWD]	INTERIOR [CU.FT.]	SHELVING [NO.]	WEIGHT
27 1/4" x 14" x 14"	INTERIOR COMPARTMENT: 9 7/8" x 13 3/4" x 11" MAIN COMPARTMENT: 5 7/8" x 13 3/4" x 9 7/8"	1.3	0	120 lbs

SAFE FEATURES

BODY & DOOR

- All steel construction
- 1/2" thick solid steel door
- 5 Massive 1" diameter solid steel locking bolts
- Interior Locker stores deposits
- Main compartment does not have access to the deposits
- Full length solid steel dead-bar

- Front loading mail box style deposit door accepts large deposits
- Anti-fish baffle helps prevent fishing through the deposit door
- Heavy-duty solid steel hinges
- 4 Pre-drilled anchor holes [Anchor Kit included]

LOCK

- Lock protected by a drill resistant hard plate & punch-activated reloading system
- Battery operated electronic lock [9V Battery included]
- Programable 01-59 minute unlocking time-delay
- Optional 2 user code entry system
- 1 Manager code & up to 5 user codes
- Multiple invalid code defense feature
- Equipped with a key locking interior locker [2 keys included]

LOCK OPTIONS

