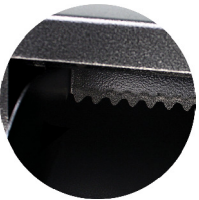
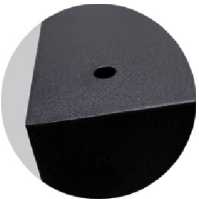
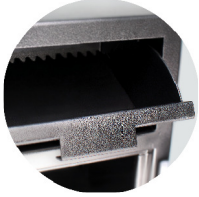


# MFL2014E

## MFL SERIES CASH MANAGEMENT BUSINESS SAFES



### SPECIFICATIONS

EXTERIOR [HWD]	INTERIOR [HWD]	INTERIOR [CU.FT.]	SHELVING [NO.]	WEIGHT
20 1/4" x 14" x 14"	8 7/8" x 13 3/4" x 11"	0.8	0	90 lbs

### SAFE FEATURES

#### BODY & DOOR

- All steel construction
- 1/2" thick solid steel door
- 3 Massive 1" diameter solid steel locking bolts
- 1 high strength adjustable/removable shelf
- Full length solid steel dead-bar

- Front loading mail box style deposit door accepts large deposits
- Anti-fish baffle helps prevent fishing through the deposit door
- Heavy-duty solid steel hinges
- 4 Pre-drilled anchor holes [Anchor Kit included]

#### LOCK

- Lock protected by a drill resistant hard plate & punch-activated relocking system
- Battery operated electronic lock [9V Battery included]
- Programable 01-59 minute unlocking time-delay
- Optional 2 user code entry system
- 1 Manager code & up to 5 user codes
- Multiple invalid code defense feature

#### LOCK OPTIONS

