

# BVV™ HOSE BARB X MNPT

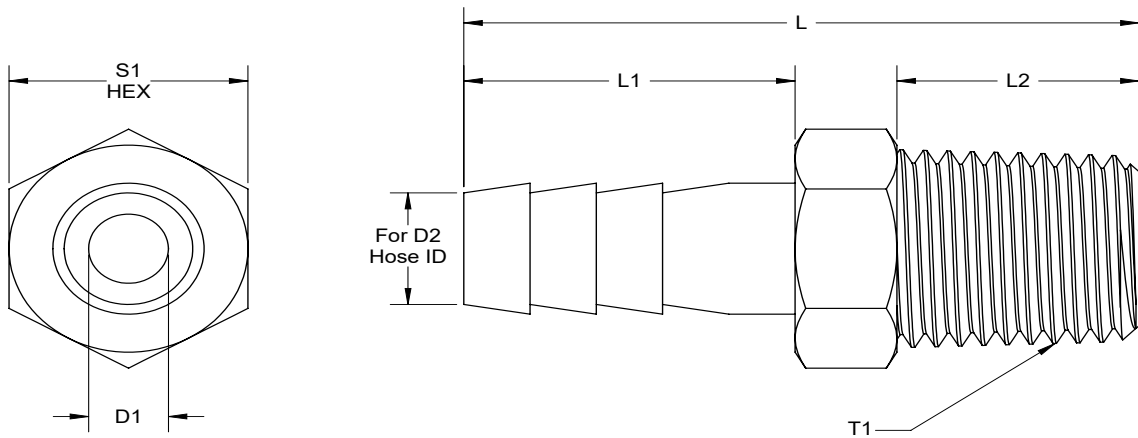
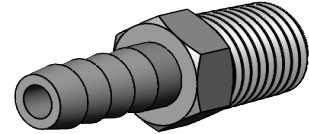
<b>Material:</b>	304 Stainless Steel
<b>Specifications Met:</b>	ASME B1.20.1, ISO 8434, and SAE J514
<b>Maximum Pressure:</b>	2500 psi @ 72°F
<b>Temperature Range:</b>	-320° - 500°F
<b>Maximum Vacuum</b>	29 in. of Hg @ 72°F
<b>Country of Origin</b>	China
<b>Use With:</b>	Butane, Propane, DME, Ethanol, Glycol, Air, Hydraulic Fluid, Natural Gas, Phosphoric Acid, and Water
<b>Note:</b>	Chemical compatibility must be determined by the customer based on the conditions in which the product is being used, including the presence of other chemicals, temperature, and consistency.
<b>Manufacturer Certification</b>	ISO 9001:2015
<b>Pipe Connection Type</b>	Male NPT
<b>Hose Connection Style</b>	Barbed
<b>RoHS</b>	RoHS (2015/863/EU) Compliant




## FITTING SPECIFICATIONS

Part No.	Thread Size (in)	Dimensions (in)					
	T1	L1	L2	L	S1	D1	D2
BVV04MN04B	1/4 " X18 NPT	0.965	0.510	1.670	0.547	1.520	1/4
BVV04MN06B	1/4 " X18 NPT	0.965	0.510	1.670	0.547	0.270	3/8
BVV08MN06B	1/2 " X14 NPT	0.965	0.665	1.940	0.868	0.270	3/8
BVV04MN08B	1/4 " X18 NPT	0.960	0.416	1.570	0.547	0.270	1/2
BVV06MN08B	3/8 " X18 NPT	0.960	0.623	1.844	0.748	0.370	1/2
BVV08MN08B	1/2 " X14 NPT	0.960	0.665	1.930	0.868	0.370	1/2
BVV08MN12B	1/2 " X14 NPT	0.960	0.665	1.930	0.868	0.551	3/4

# BVV™ HOSE BARB X MNPT



TITLE: BVVMNB		MATERIAL: 304 SS		NAME	<small>           TOLERANCES            UNLESS OTHERWISE SPECIFIED            DECIMALS IN MM            X +/- .1 +/- .8            XX +/- .01 +/- .25            XXX +/- .00            ANGULAR +/- .1° +/- .1°         </small>		<b>PROPRIETARY AND CONFIDENTIAL</b> <small>           THE INFORMATION CONTAINED IN THIS DRAWING IS THE SOLE PROPERTY OF BEST VALUE VACS. ANY REPRODUCTION IN PART OR AS A WHOLE WITHOUT THE WRITTEN PERMISSION OF BEST VALUE VACS IS PROHIBITED.         </small>
DATE: 3/22/2022	REVISION: 00	FINISH: N/A	DRAWN	JB			
SHEET: 1 OF 1	SHEET SIZE: A	UNITS: IN	CHECKED	ENG APPR.			