

BVV™ HEX NIPPLE

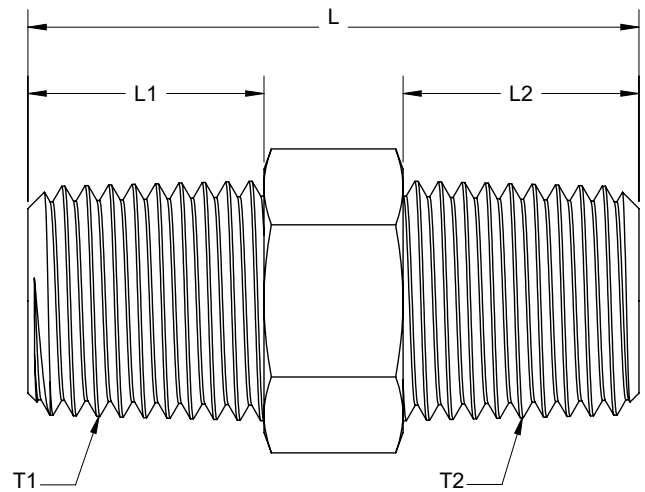
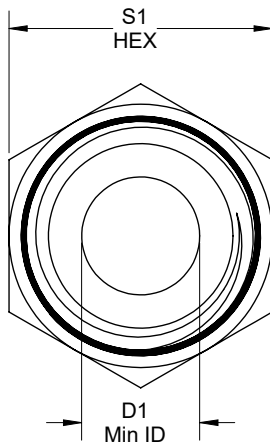
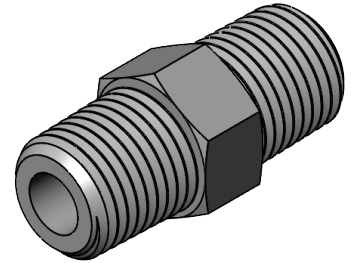
Material:	304 Stainless Steel
Specifications Met:	ASME B1.20.1, ISO 8434, and SAE J514
Maximum Pressure:	4600 psi @ 72°F
Temperature Range:	-320° - 500°F
Maximum Vacuum	29 in. of Hg @ 72°F
Country of Origin	China
Use With:	Butane, Propane, DME, Ethanol, Glycol, Air, Hydraulic Fluid, Natural Gas, Phosphoric Acid, and Water
Note:	Chemical compatibility must be determined by the customer based on the conditions in which the product is being used, including the presence of other chemicals, temperature, and consistency.
Manufacturer Certification	ISO 9001:2015
Pipe Connection Type	Male NPT
RoHS	RoHS (2015/863/EU) Compliant




FITTING SPECIFICATIONS

Part No.	Thread Size (in)		Dimensions (in)				
	T1	T2	L1	L2	L	S1	D1
BVV04HN	1/4 " X18 NPT	1/4 " X18 NPT	0.560	0.560	1.438	0.625	0.252
BVV0604HN	3/8 " X18 NPT	1/4 " X18 NPT	0.560	0.560	1.438	0.750	0.220
BVV06HN	3/8 " X18 NPT	3/8 " X18 NPT	0.560	0.560	1.438	0.750	0.390
BVV0804HN	1/2 " X14 NPT	1/4 " X18 NPT	0.750	0.560	1.688	0.875	0.220
BVV0806HN	1/2 " X14 NPT	3/8 " X18 NPT	0.750	0.560	1.688	0.875	0.390
BVV08HN	1/2 " X14 NPT	1/2 " X14 NPT	0.750	0.750	1.875	0.875	0.450
BVV12HN	3/4 " X14 NPT	3/4 " X14 NPT	0.750	0.750	1.875	1.063	0.585
BVV1612HN	3/4 " X14 NPT	1 " X11.5 NPT	0.750	0.940	2.125	1.375	0.585
BVV16HN	1 " X11.5 NPT	1 " X11.5 NPT	0.940	0.940	2.313	1.375	0.785

BVV™ HEX NIPPLE



TITLE: BVVHN		MATERIAL: 304 SS		NAME	<small> TOLERANCES UNLESS OTHERWISE SPECIFIED DECIMALS IN MM X +/- .1 +/- .8 XX +/- .01 +/- .25 XXX +/- .005 ANGULAR +/- .1° +/- .1° </small>		PROPRIETARY AND CONFIDENTIAL <small> THE INFORMATION CONTAINED IN THIS DRAWING IS THE SOLE PROPERTY OF BEST VALUE VACS. ANY REPRODUCTION IN PART OR AS A WHOLE WITHOUT THE WRITTEN PERMISSION OF BEST VALUE VACS IS PROHIBITED. </small>
DATE: 4/6/2022		FINISH: N/A	DRAWN	JB			
REVISION: 00	UNITS: IN	CHECKED					
SHEET: 1 OF 1	SHEET SIZE: A	SCALE: 3:1	ENG APPR.				