



SHOPBVV.COM

Technical Data Sheet

ONE PIECE BALL VALVE

Full Port | 2000 PSI | 1/4"-1/2"

WWW.SHOPBVV.COM | SUPPORT@SHOPBVV.COM

FEATURES

- Investment Cast Body Construction
- 1 Piece Body Design
- Blow-Out-Proof Stem Design
- Integral Seat & Body Seal Design for 1/4" ~ 1/2"
- Locking Device
- Stainless Steel CFM8 Body

PRODUCT SPECIFICATIONS

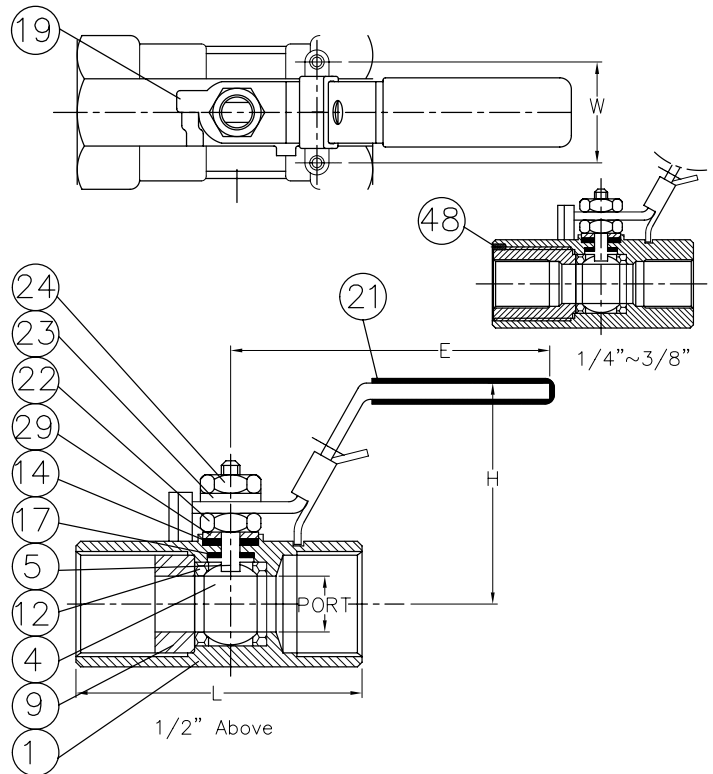
- **Size Range** 1/4" ~ 2" (DN8 ~ DN50)
- **End Connection** Threaded Ends
- **Working Pressure** 2000 PSI (CWP) for 1/4" ~ 1" PN140 for DN8 ~ DN50
- **Temperature Range** -40 to 356 °F (-40 to 180 °C) for TFM1600™

STANDARDS

- **Design** EN-12516-1/3
- **Threaded End** NPT/ BS 21 (BSP) / BSPT / ISO 228-1 / DIN 2999 / ISO 7-1Rp
- **Face to Face** MFG Standard
- **Material** ASTM
- **Pressure Testing** API 598

CERTIFICATE

- **Quality Assurance** ISO 9001
- **Material Certificate** EN 10204-3.1 MTR
- **CE Approval** PED 2014/68/EU Module H



MATERIAL LIST

NO.	PART NAME	MATERIAL (more options available)
1	BODY	ASTM A351 Gr.CF8M
4	BALL	ASTM A276 Gr.316 for DN8 ~ DN15 ASTM A351 Gr.CF8M for DN20 ~ DN50
5	STEM	ASTM A276 Gr.316
9	INSERT	ASTM A276 Gr.316
12	SEAT	TFM1600™
13	THRUST WASHER	PTFE.
14	STEM PACKING	PTFE.
19	HANDLE	SS304
21	HANDLE COVER	VINYL GRIP
22	STEM NUT	SS304
23	HANDLE WASHER (1/2" UP)	SS304
24	HANDLE NUT	SS304
29	BELLEVILLE WASHER	SS304
48	PIN	SS304

DIMENSION unit : mm

SIZE	PORT	L	H	E	W
DN8	1/4"	9.2	58.5	46.9	109.0
DN10	3/8"	9.2	58.5	46.9	109.0
DN15	1/2"	9.2	66.0	57.9	102.0

DIMENSION unit : inch

SIZE	PORT	L	H	E	W
DN8	1/4"	0.36	2.30	1.85	4.29
DN10	3/8"	0.36	2.30	1.85	4.29
DN15	1/2"	0.36	2.60	2.28	4.02