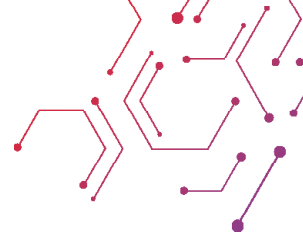


# Product Information Sheet

## 10" Cold Trap with KF25 Ports

**NOTE: Please review this product information sheet as a quick start setup guide and to answer any questions you may still have.**



### PRODUCT DESCRIPTION

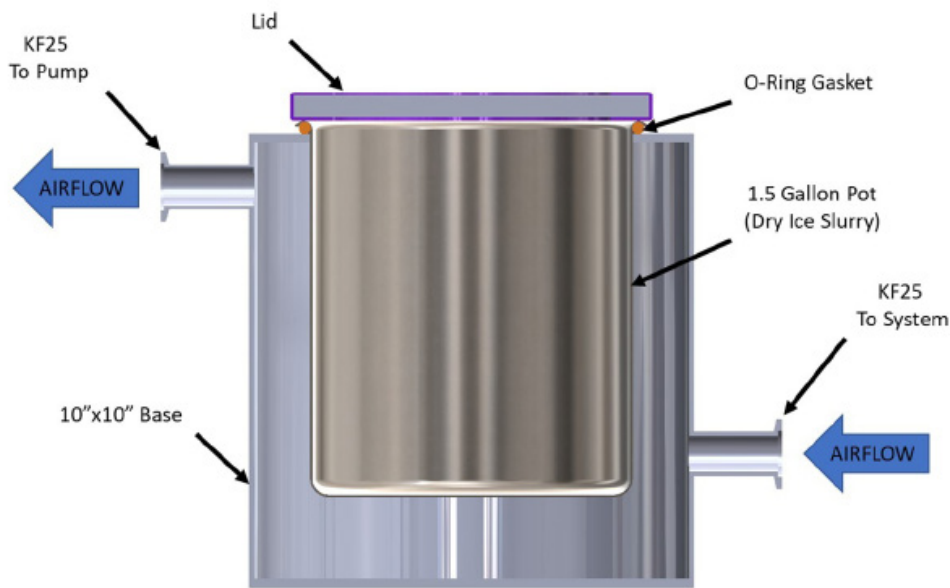


Cold traps are used in vacuum applications where contaminating vapors may be present, and a cold trap is required to assure vapors are condensed before reaching the vacuum pump. They can be used with any pump but are mostly used with rotary vane pumps. Protecting your pump will greatly increase the life of all your seals and internal components it will also assure that a full vacuum is pulled based on the pump's capabilities.

BVV's 10"X10" KF25 Cold Trap features KF25 ports (Qty: 2). The lower port is connected to the system that is under vacuum and the top to the vacuum pump. The KF25 allows for a larger bore and works great for high flow applications. This kit comes with KF25 rings (Qty: 2) and KF25 clamps (Qty: 2) ready to be connected in line with your setup. The internal pot is made of stainless steel and can hold 1.5 gallons which will hold the dry ice slurry or other cooling applications. A silicone O-ring sits around the 1.5-gallon pot and creates a seal with the top of the 10"X10" base. For more information, please review the specifications table and setup diagram.

Specifications		
Model	CTRAP10X10-B	
Material of Base and Internal Pot	Stainless Steel	
Gasket Material	Silicone	
Lid Material	Silicone + Glass	
Vacuum Rating	30 microns	
Weight	29lbs	
Overall Height	11.5"	
Overall Diameter (Including Ports)	14"	
Cold Trap Surface Area	234.45 sq.in	
Internal Pot Volume	1.5 gallons	
Chemical Compatibility with Glass Lid	Ethanol	Excellent
	Acetone	Good
	Water	Excellent
	Propylene Glycol	Excellent
	Isopropyl Alcohol	Excellent
Chemical Compatibility with Silicone O-Ring and Lid Seal	Ethanol	Good
	Acetone	Good
	Pentane	Good
	Hexane	Good
	Heptane	Good

## SETUP DIAGRAM



## TROUBLESHOOTING

Problem	Possible Reason	Solution
I am not getting a vacuum	Vacuum Leak	Inspect the system that is being pulled under vacuum for any damaged or compromised seals/joints. Find the vacuum leak and re-test.
		Inspect O-ring under 1.5-gallon pot for any damages and apply vacuum grease if needed. Make sure the gasket is sitting centered with the 1.5-gallon pot and base.
		Vacuum pump is not pulling vacuum. Test pump to make sure it's functioning properly.
The lid is damaged and I cannot see inside the 1.5-gallon pot	Solvent is not compatible with glass lid	Check table for glass solvent compatibility. Always avoid directly spilling any solvent directly on lid. If lid gets solvent on it follow SDS sheet for proper removal.

Amazon: Items purchased from our Amazon store require the use of the Amazon platform to resolve any issues, per Amazon's policies. You can find the help link on our website under "Damage, Return, and Exchange Policies".

Ebay: Items purchased from our Ebay store require the use of the Ebay platform to resolve any issues, per Ebay's policies. You can find the help link on our website under "Damage, Return, and Exchange Policies".

Etsy: Items purchased from our Etsy store require the use of the Etsy platform to resolve any issues, per Etsy's policies. You can find the help link on our website under "Damage, Return, and Exchange Policies".

**BVV. 1251 Frontenac Rd, Suite 150. Naperville, IL 60563**

**For additional support:**

**Contact us by email:  
support@shopbv.com**

**Contact us by telephone:  
(331) 281-0154**