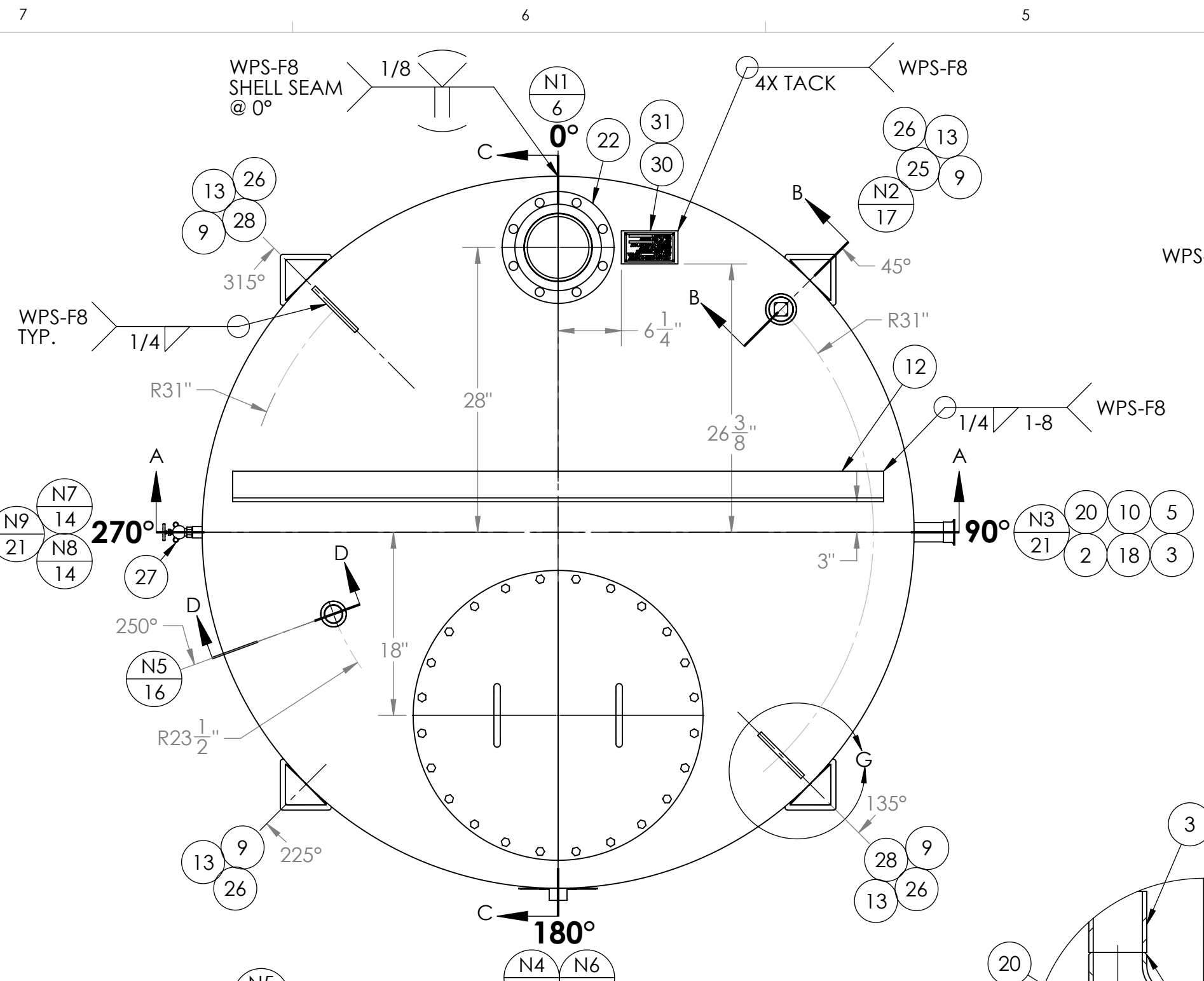
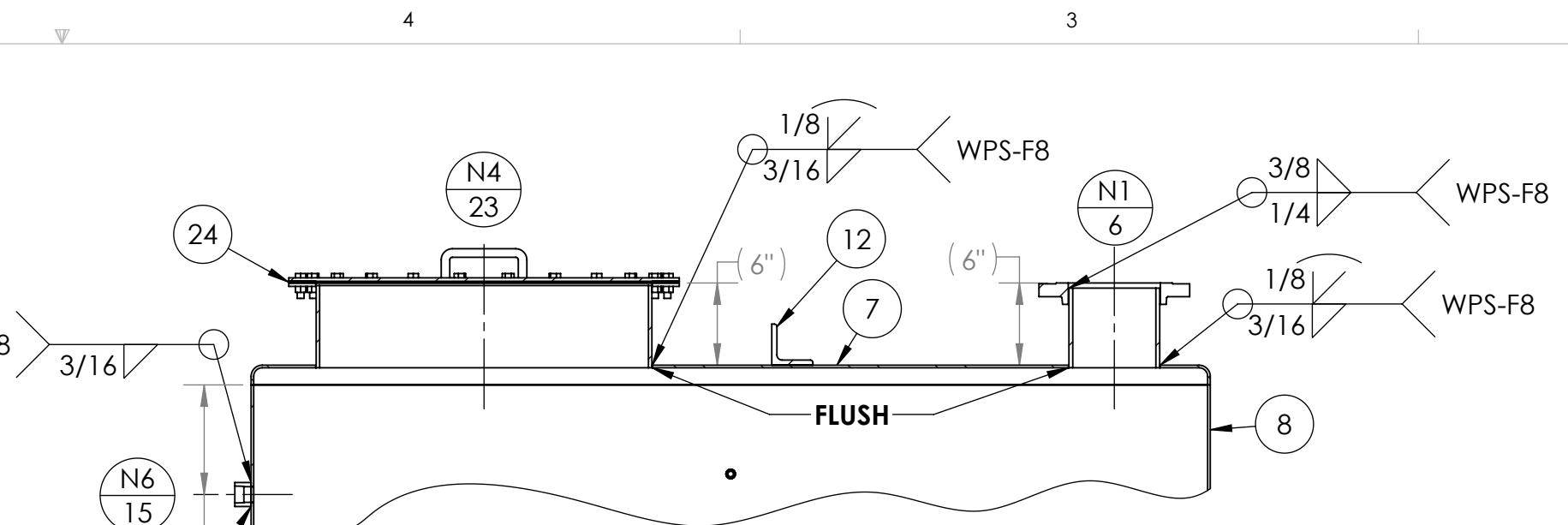


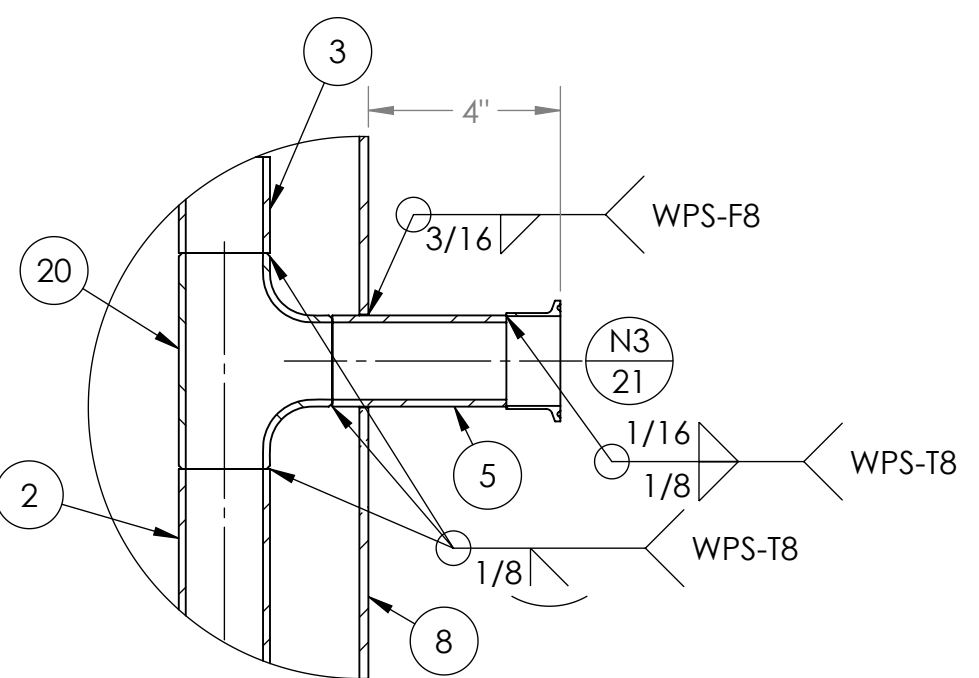
**PICTORIAL VIEW**



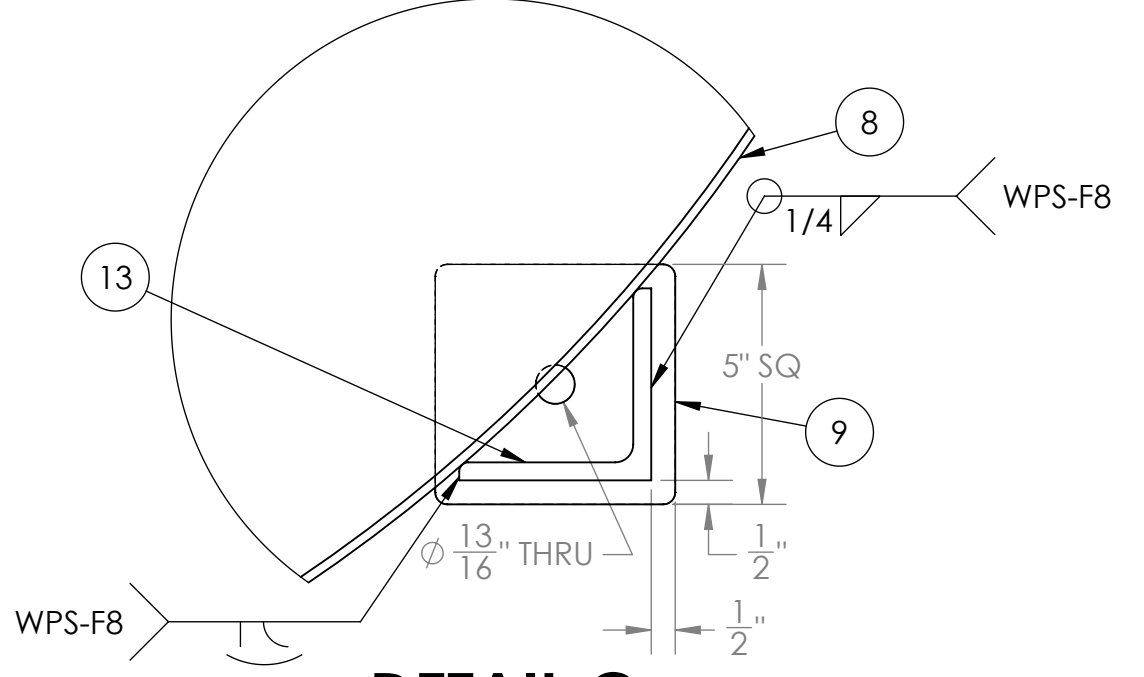
**TOP VIEW**



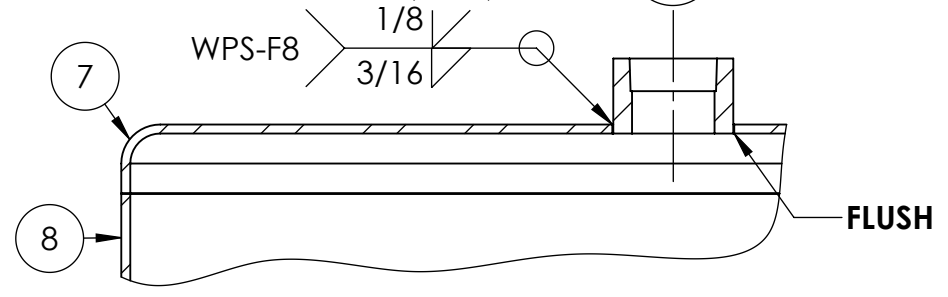
**SECTION C-C  
NOZZLES N1, N4, & N6**



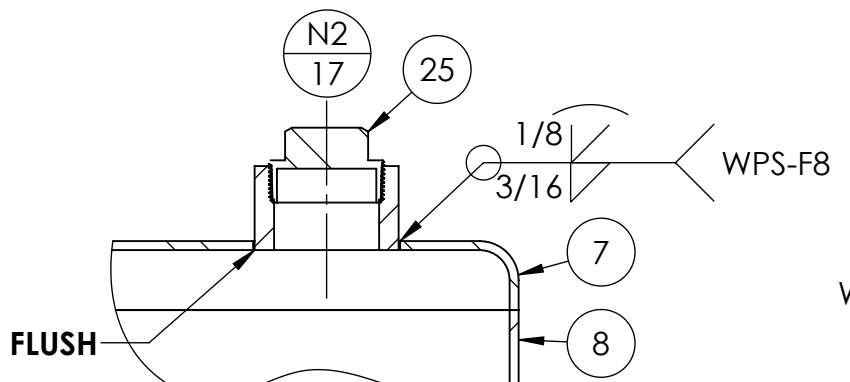
**DETAIL E  
NOZZLE N3**



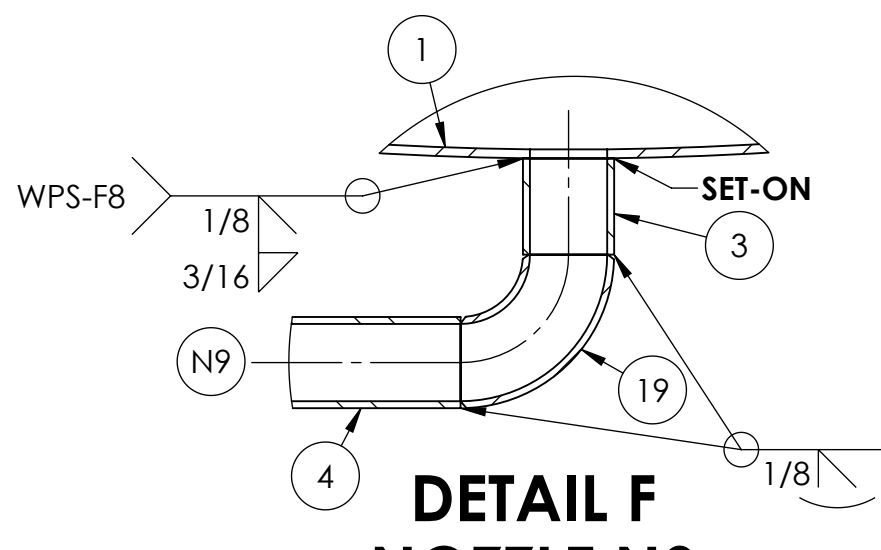
**DETAIL G  
LEG TYP.**



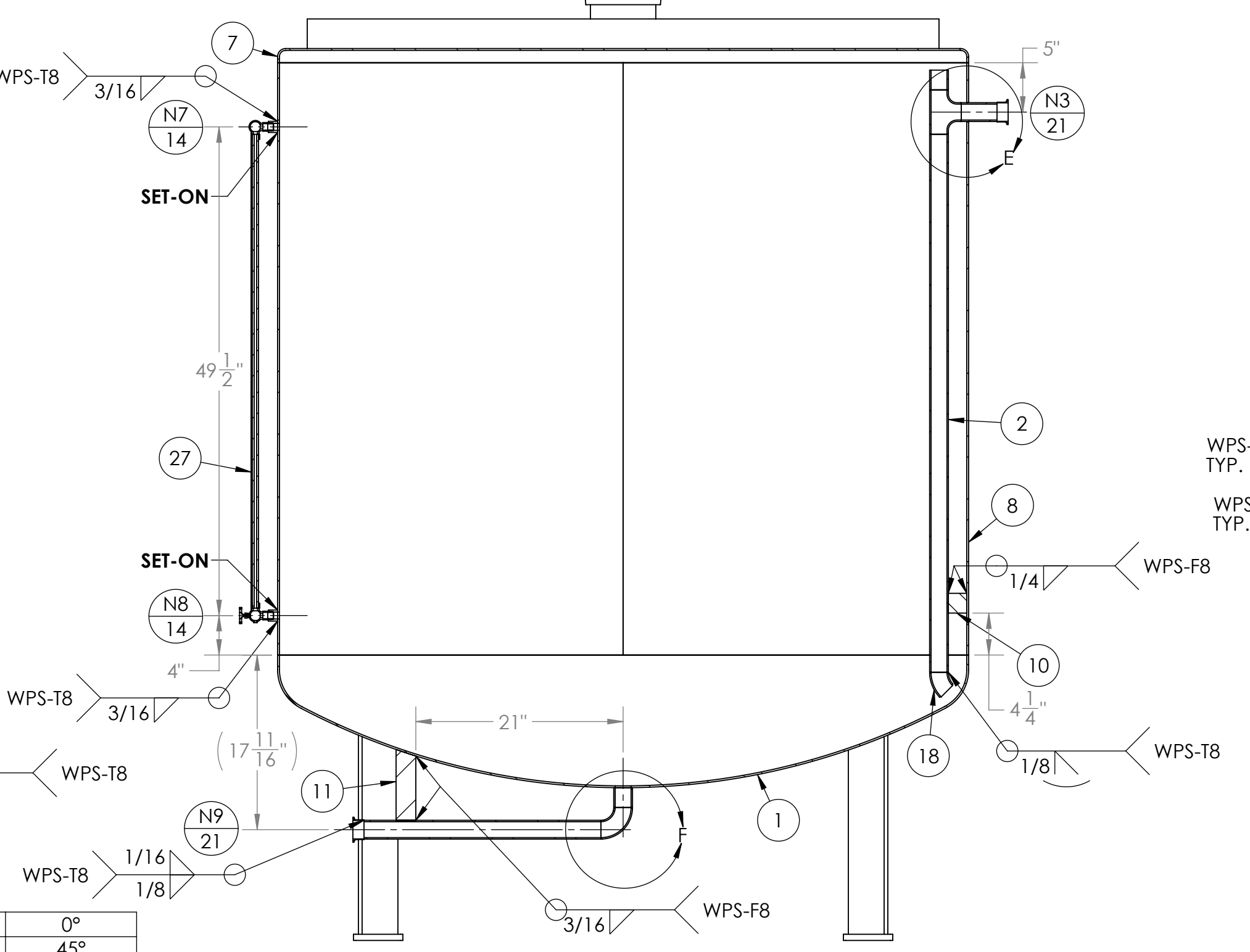
**SECTION D-D  
NOZZLE N5**



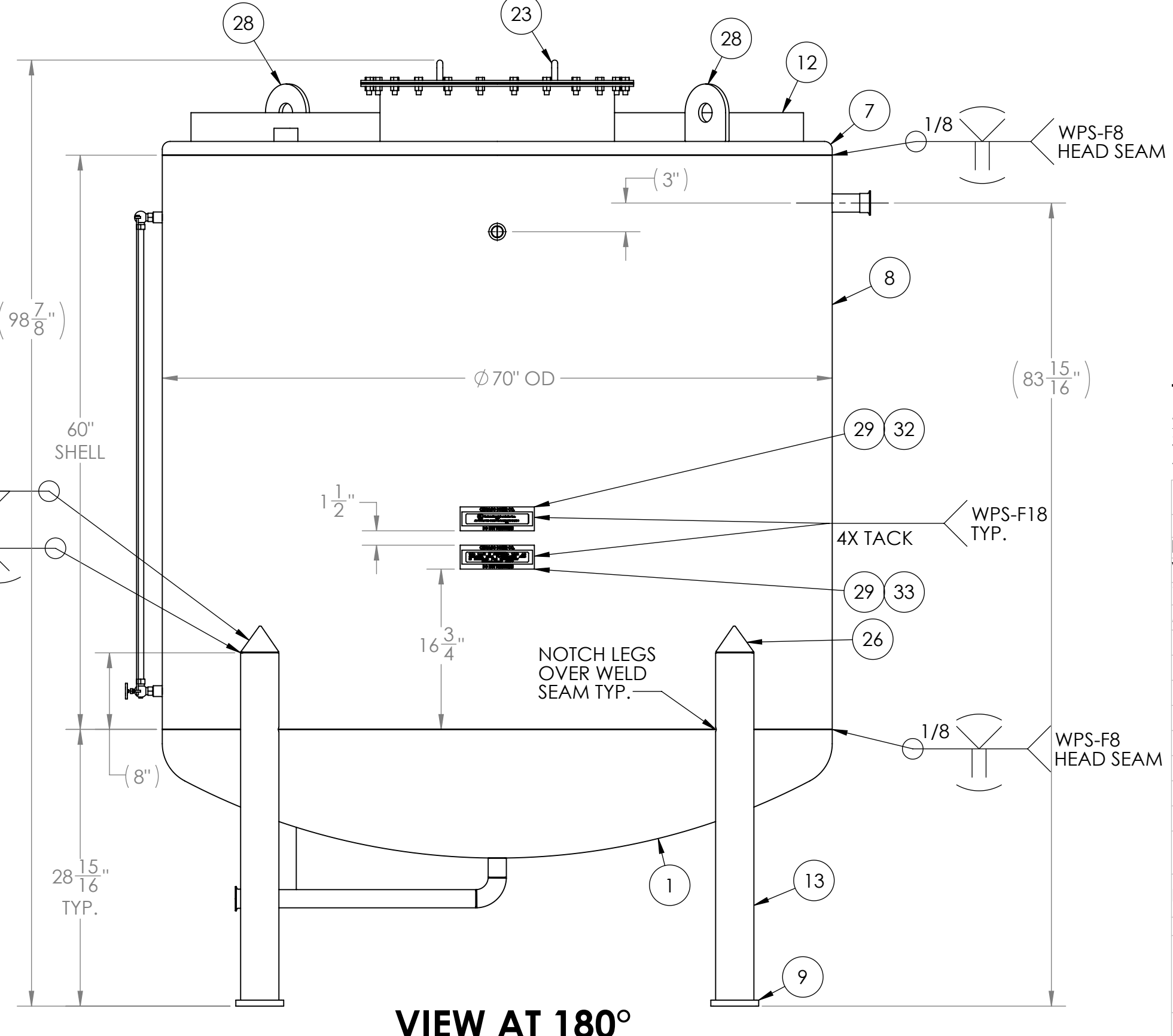
**SECTION B-B  
NOZZLE N2**



**DETAIL F  
NOZZLE N9**



**SECTION A-A  
NOZZLES N3, N7, N8, & N9**



**VIEW AT 180°**

MARK	SIZE	TYPE	SERVICE	ORIENTATION
N1	6"	FLANGE, RFSO 150#	VENT / EMERGENCY VENT	0°
N2	2"	COUPLING, HALF 3000#	SPARE	45°
N3	2"	FERRULE, SANITARY	FILL	90°
N4	24"	UL-142 ROOF MANWAY	MANWAY	180°
N5	1-1/2"	COUPLING, HALF 3000#	LEVEL PROBE	250°
N6	1"	COUPLING, HALF 3000#	HIGH FLOAT	180°
N7	1/2"	COUPLING, HALF 3000#	SIGHT GLASS	270°
N8	1/2"	COUPLING, HALF 3000#	SIGHT GLASS	270°
N9	2"	FERRULE, SANITARY	OUTLET	BOTTOM

**NOZZLE CHART**

ITEM NO.	QTY.	DESCRIPTION	MATERIAL	PART NUMBER
1	1	HEAD, ASME F&D 70" OD X 3/16" THK.	SA-240-304	58D8-HEAD
2	1	PIPE, SMLS 1-1/2" SCH 40	SA-312-304/L	GV-01HS40-3S
3	2	PIPE, SMLS 1-1/2" SCH 40	SA-312-304/L	GV-01HS40-3S
4	1	PIPE, SMLS 1-1/2" SCH 40	SA-312-304/L	GV-01HS40-3S
5	1	PIPE, SMLS 1-1/2" SCH 40	SA-312-304/L	GV-01HS40-3S
6	1	PIPE, WELD 6" SCH 40	SA-312-304/L	GW-060S40-3S
7	1	PLATE, 3/16" THK.	SA-240-304	GP-00C-0S
8	1	PLATE, 3/16" THK.	SA-240-304	GP-00C-0S
9	4	PLATE, 5/8" THK.	SA-240-304	GP-00J-0S
10	1	BAR, FLAT 1/4" THK. X 2"	SA-479-304	GB-0D20-0S
11	1	BAR, FLAT 1/4" THK. X 2"	SA-479-304	GB-0D20-0S
12	1	ANGLE, 3" X 3" X 3/8" THK.	SA-479-304	GA-30300F-0S
13	4	ANGLE, 4" X 4" X 3/8" THK.	SA-479-304	GA-40400F-0S
14	2	COUPLING, HALF 1/2" 3000#	SA-182-304	FCH-00H-3S
15	1	COUPLING, HALF 1" 3000#	SA-182-304	FCH-010-3S
16	1	COUPLING, HALF 1-1/2" 3000#	SA-182-304	FCH-01H-3S
17	1	COUPLING, HALF 2" 3000#	SA-182-304	FCH-020-3S
18	1	ELBOW, 45° 1-1/2" SCH 40	SA-403-304	FWE-01HS40LS-S
19	1	ELBOW, LONG RADIUS 1-1/2" SCH 40	SA-403-304	FWE-01HS40LR-S
20	1	TEE, BUTT WELD 1-1/2" SCH 40	SA-403-304/L	FWT-01HOB-0S
21	2	FERRULE, SANITARY 2" X 1-1/8" LG.	304 S/S	FHTAS-200BFR-0S
22	1	FLANGE, RFSO 6" 150#	SA-182-304	FFSO-06000R-0S
23	1	MANWAY, UL ROOF 24" ID X 6" COLLAR	S/S	MHUL-R246-0S
24	1	GASKET, FULL FACE UL ROOF 24"	NC-710	GGM-00B-NC710
25	1	PLUG, 2" NPT	316 S/S	FP-020-T
26	4	CAP, LEG ANGLE 4" X 4"	SA-240-304	GAC-4040-10G-0S
27	1	GLASS, SIGHT 48" LG. COMPLETE ASSY	BRASS	XSGL-48
28	2	LUG, LIFT UL 6" X 1/2" THK.	SA-240-304	GLL-UL6-0S
29	2	BRACKET, MISC LABEL	SA-36	GLBH-MISC-F
30	1	BRACKET, LABEL E-VENT VERTICAL	SA-240-304	GLBV-VENT-SV
31	1	LABEL, EMERGENCY CAPACITY VENT	304 S/S	GLB-VENT-S
32	1	LABEL, ABOVEGROUND UL 142	BRASS	GLB-AG-UL
33	1	LABEL, STATIONARY INSTALLATION	BRASS	GLB-WARNING

**128.5 SQ FT WETTED SURFACE**  
**134,900 FT<sup>3</sup>/HR VENTING CAPACITY**

**NOTES: UNLESS OTHERWISE SPECIFIED**  
1.0 FLANGE/PIPE OFFSET WILL BE 3/8" TYPICAL (UOS)  
2.0 NOZZLE INTERNAL PROJECTION WILL BE FLUSH TYPICAL (UOS)  
3.0 FLANGE BOLT HOLES TO STRADDLE VESSEL CENTERLINES  
4.0 CLEAN VESSEL OF FOREIGN MATTER, GREASE, WELD SPATTER, ETC.

**DESIGN AND MANUFACTURING INFORMATION**

DESIGN CODE:		UL-142 WITH STAMP PROVIDED	
DESIGN PRESSURE (PSIG):	VESSEL: 1	JACKET: N/A	N/A
VACUUM PRESSURE (PSIG):	VESSEL: N/A	JACKET: N/A	N/A
TEST PRESSURE (PSIG):	VESSEL: 1.5-2.5	JACKET: N/A	N/A
M.A.W.P. TEMPERATURES (°F):	MAX: 140	MIN: -40	
WEIGHT (LBS):	DRY: 1520	OPERATING: TBD	
VOLUME (GAL):	MAX: 1150 FLOODED	OPERATING: 1000	
SHIPPING DIMENSIONS (IN):	DEPTH: 72"	WIDTH: 75"	HEIGHT: 99"
X-RAY:	NONE		
HEAT TREAT:	NONE		
CORROSION ALLOWANCE:	0.000"		
BLAST SPECS:	INTERIOR: NONE	EXTERIOR: GLASS BEAD	
PAINT COLOR:	INTERIOR: NONE	EXTERIOR: NONE	
INTERIOR PAINT SPECS:	NONE		
EXTERIOR PAINT SPECS:	NONE		

NAME	DATE	DESCRIPTION
DESIGN: MJK	09/30/2020	
CHECKED: RS	09/30/2020	
ENG APPR: MJK	10/01/2020	
MFG APPR: G.A.		
COMMENTS:		

1000 GALLON VERTICAL ATMOSPHERIC SOLVENT TANK  
CUSTOMER:  
SIZE: **D** JOB NO: 58D8 REV: 0  
QTY: 2 MATL: S/S SHEET 1 OF 1

REV	DATE	BY	DESCRIPTION