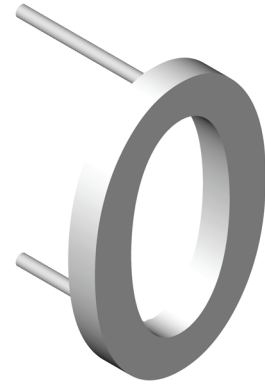
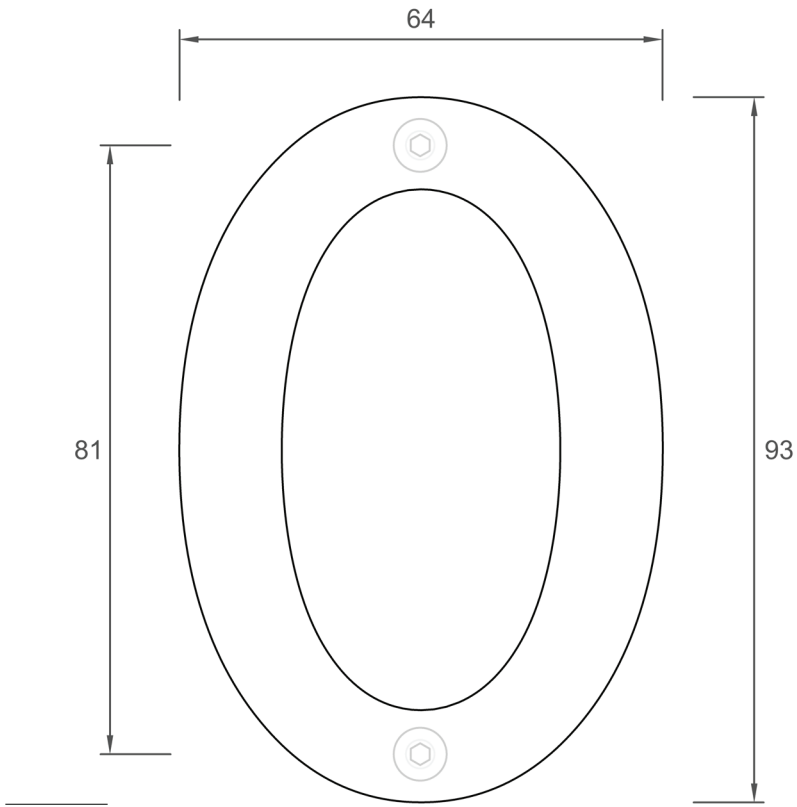
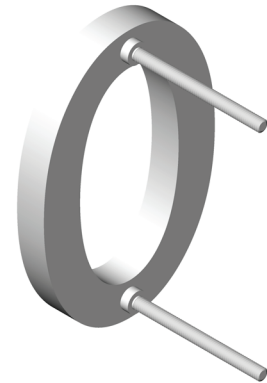
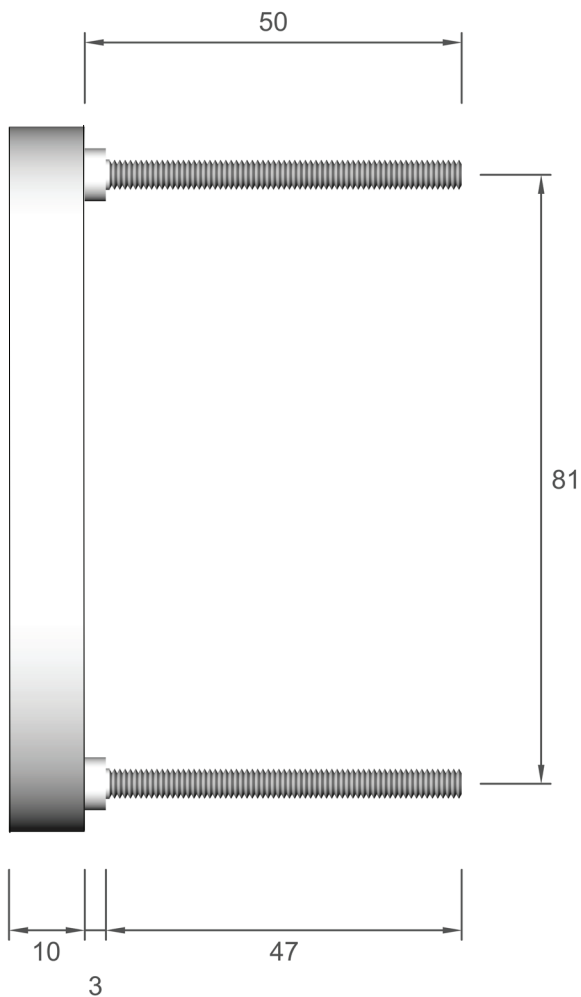


# 0

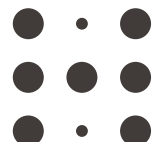


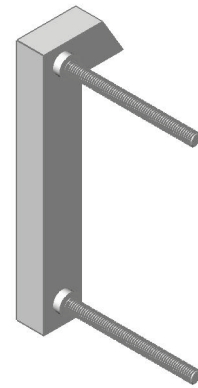
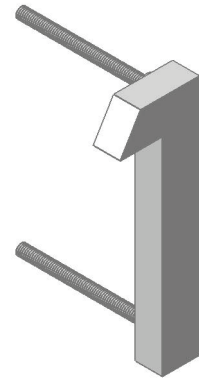
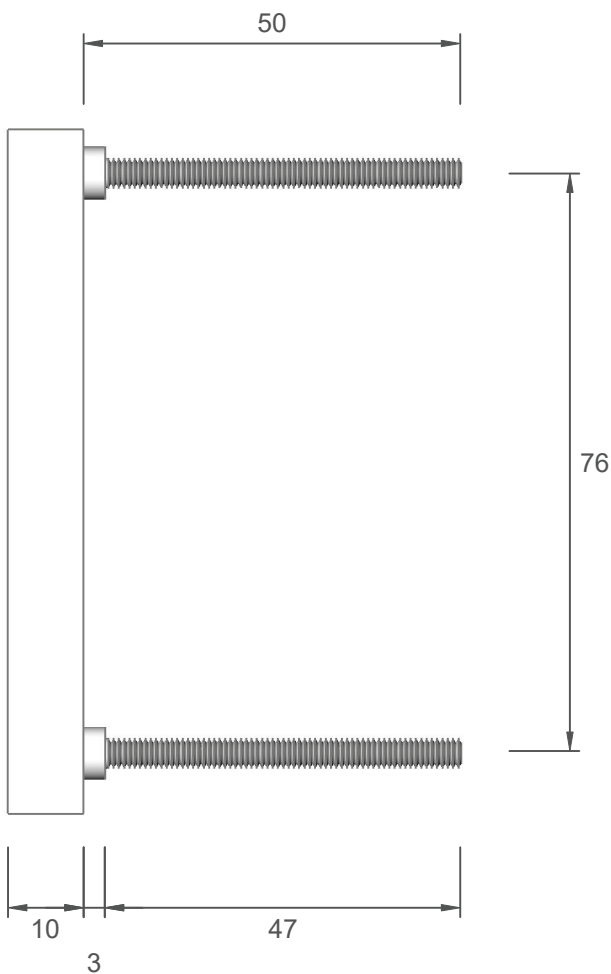
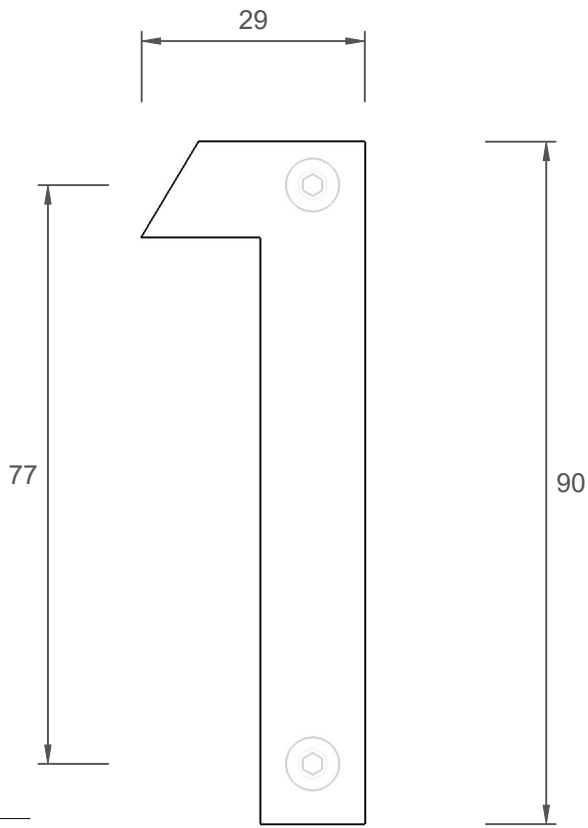
Installation - Fold here & use 1:1 template to mark holes for drilling.



Item Number	Finish
HIB-N0-SS	Brushed Stainless Steel
HIB-N0-WHI	Powdercoated White
HIB-N0-BLK	Powdercoated Black
304 Grade Stainless Steel Plate - Laser Cut 10mm Thickness - Solid	
HIB-N0-CS	Rusted
Corten Steel Plate - Laser Cut 6mm Thickness - Solid	

Please note: Dimensions are subject to change. Prior to installation the dimensions on the actual number, or letter, should be checked.



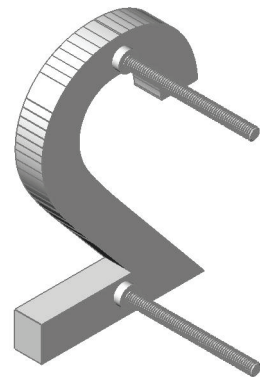
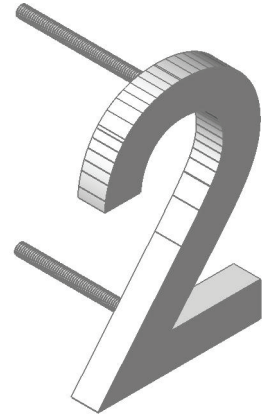
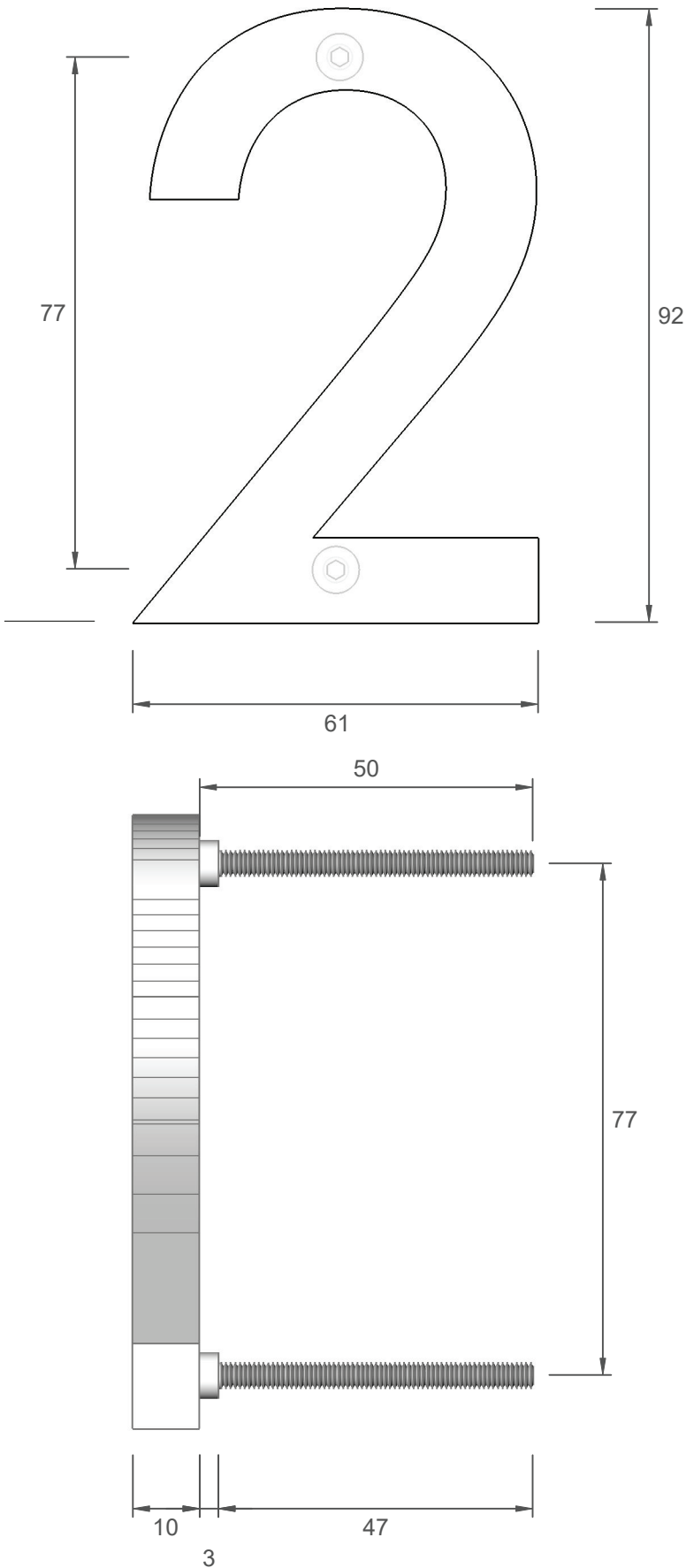


Installation - Fold here & use 1:1 template to mark holes for drilling.

Item Number	Finish
HIB-NI-SS	Brushed Stainless Steel
HIB-NI-WHI	Powdercoated White
HIB-NI-BLK	Powdercoated Black
304 Grade Stainless Steel Plate - Laser Cut 10mm Thickness - Solid	
HIB-NI-CS	Rusted
Corten Steel Plate - Laser Cut 6mm Thickness - Solid	

Please note: Dimensions are subject to change. Prior to installation the dimensions on the actual number, or letter, should be checked.



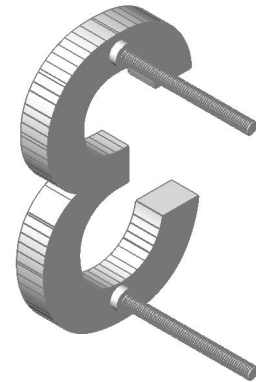
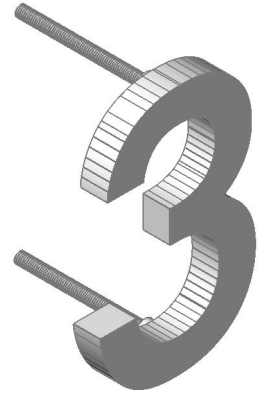
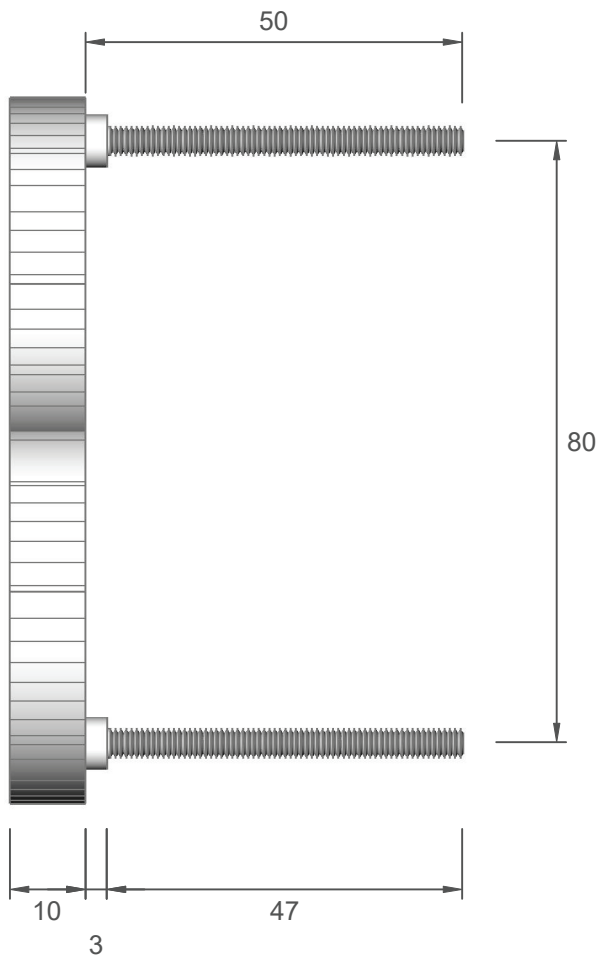
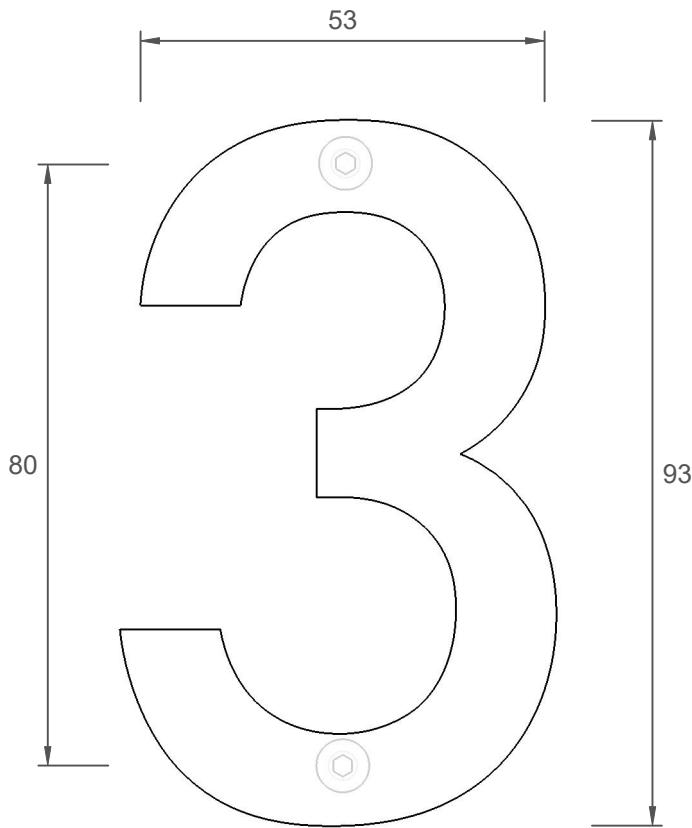


Installation - Fold here & use 1:1 template to mark holes for drilling.

Item Number	Finish
HIB-N2-SS	Brushed Stainless Steel
HIB-N2-WHI	Powdercoated White
HIB-N2-BLK	Powdercoated Black
304 Grade Stainless Steel Plate - Laser Cut 10mm Thickness - Solid	
HIB-N2-CS	Rusted
Corten Steel Plate - Laser Cut 6mm Thickness - Solid	

Please note: Dimensions are subject to change. Prior to installation the dimensions on the actual number, or letter, should be checked.

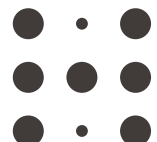


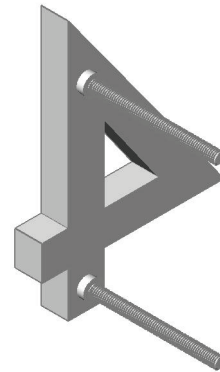
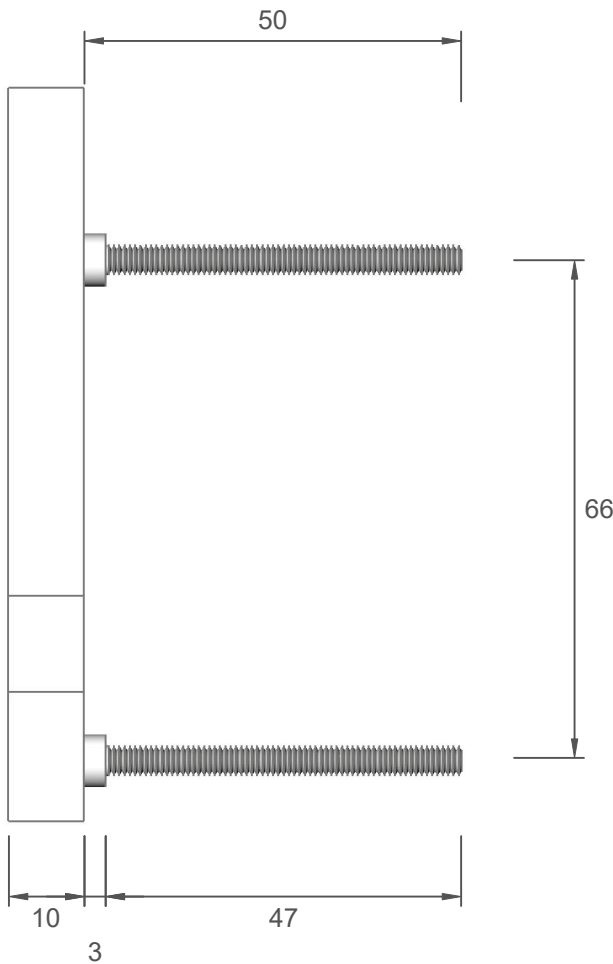
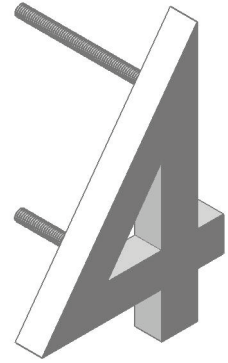
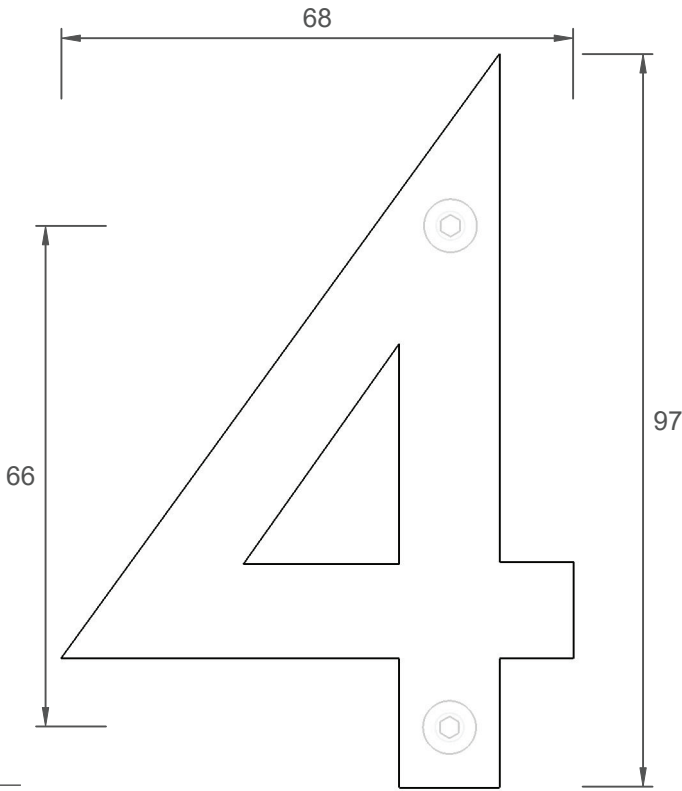


Installation - Fold here & use 1:1 template to mark holes for drilling.

Item Number	Finish
HIB-N3-SS	Brushed Stainless Steel
HIB-N3-WHI	Powdercoated White
HIB-N3-BLK	Powdercoated Black
304 Grade Stainless Steel Plate - Laser Cut 10mm Thickness - Solid	
HIB-N3-CS	Rusted
Corten Steel Plate - Laser Cut 6mm Thickness - Solid	

**Please note:** Dimensions are subject to change. Prior to installation the dimensions on the actual number, or letter, should be checked.

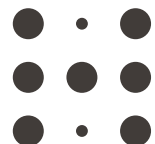


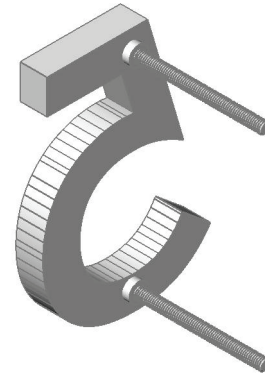
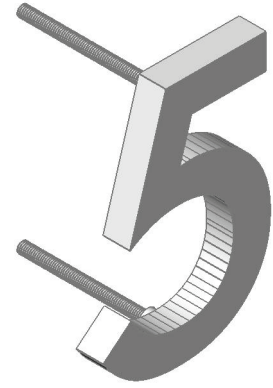
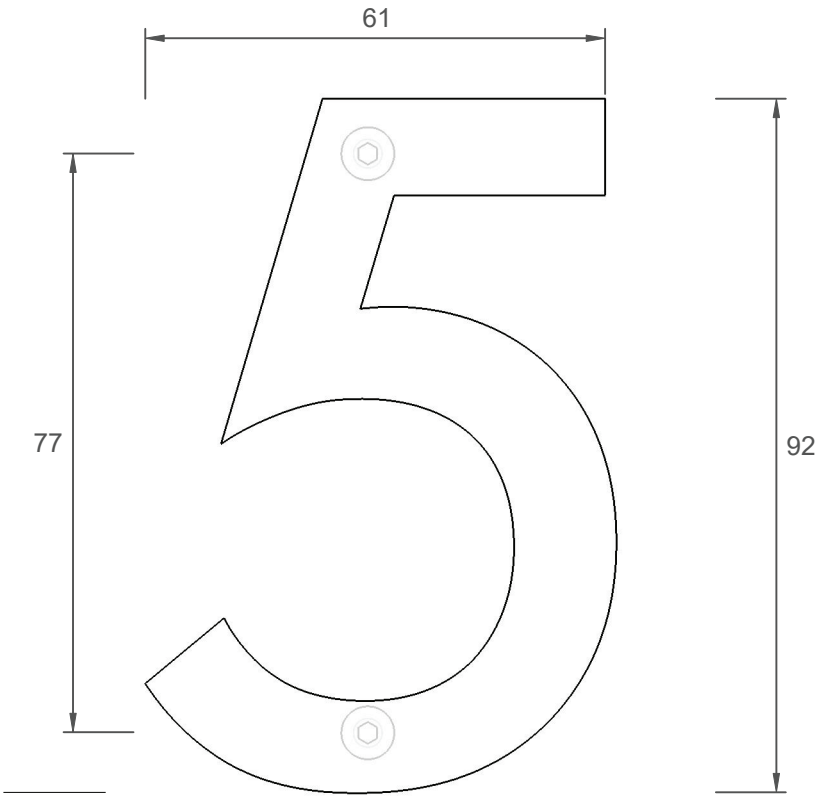


Installation - Fold here & use 1:1 template to mark holes for drilling.

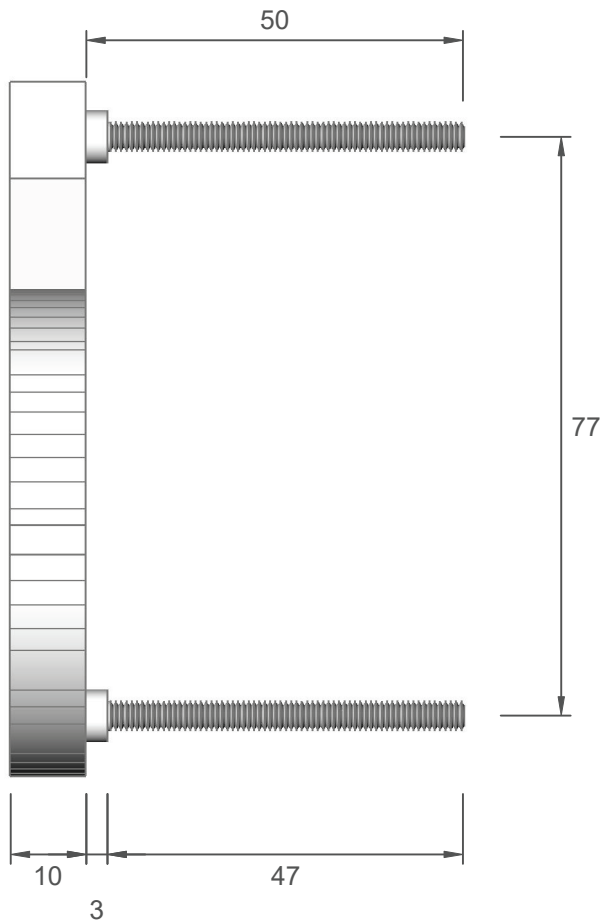
Item Number	Finish
HIB-N4-SS	Brushed Stainless Steel
HIB-N4-WHI	Powdercoated White
HIB-N4-BLK	Powdercoated Black
304 Grade Stainless Steel Plate - Laser Cut 10mm Thickness - Solid	
HIB-N4-CS	Rusted
Corten Steel Plate - Laser Cut 6mm Thickness - Solid	

**Please note:** Dimensions are subject to change. Prior to installation the dimensions on the actual number, or letter, should be checked.



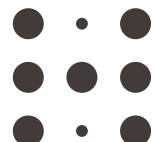


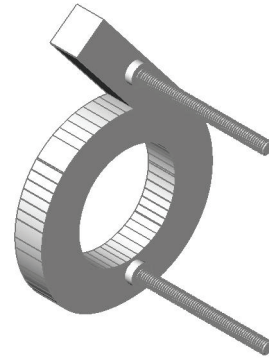
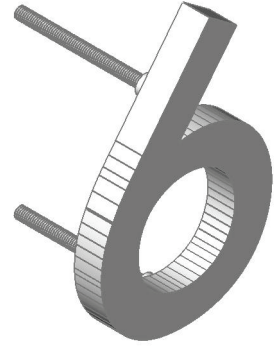
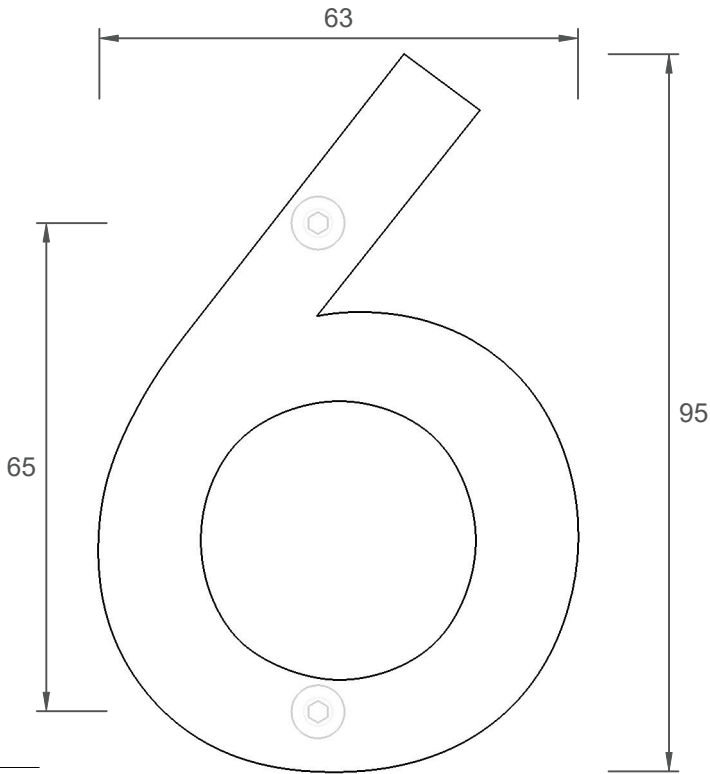
Installation - Fold here  
& use 1:1 template to  
mark holes for drilling.



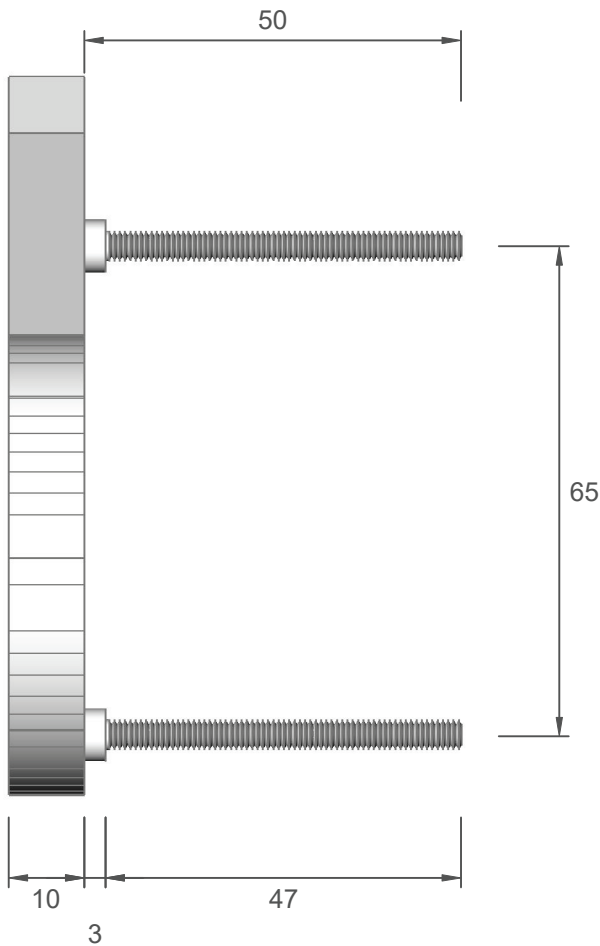
Item Number	Finish
HIB-N5-SS	Brushed Stainless Steel
HIB-N5-WHI	Powdercoated White
HIB-N5-BLK	Powdercoated Black
304 Grade Stainless Steel Plate - Laser Cut 10mm Thickness - Solid	
HIB-N5-CS	Rusted
Corten Steel Plate - Laser Cut 6mm Thickness - Solid	

**Please note:** Dimensions are subject to change.  
Prior to installation the dimensions on the actual  
number, or letter, should be checked.



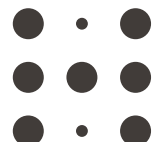


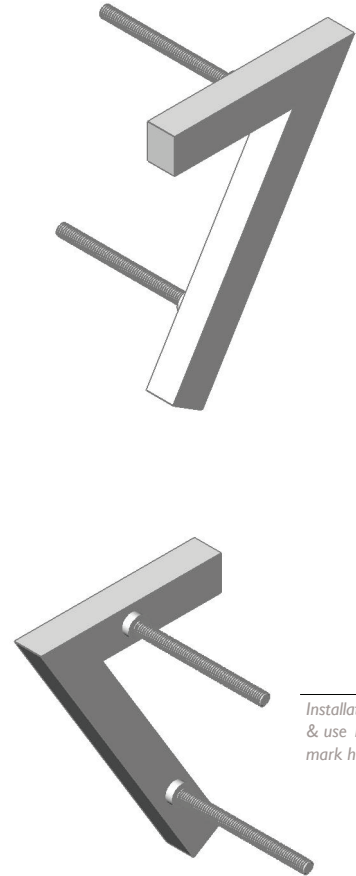
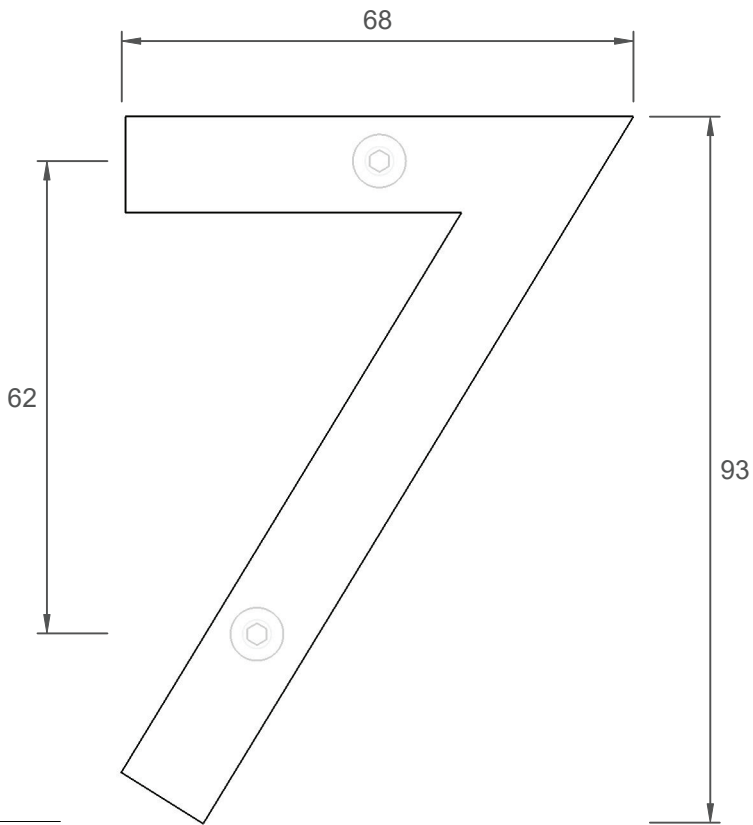
Installation - Fold here & use 1:1 template to mark holes for drilling.



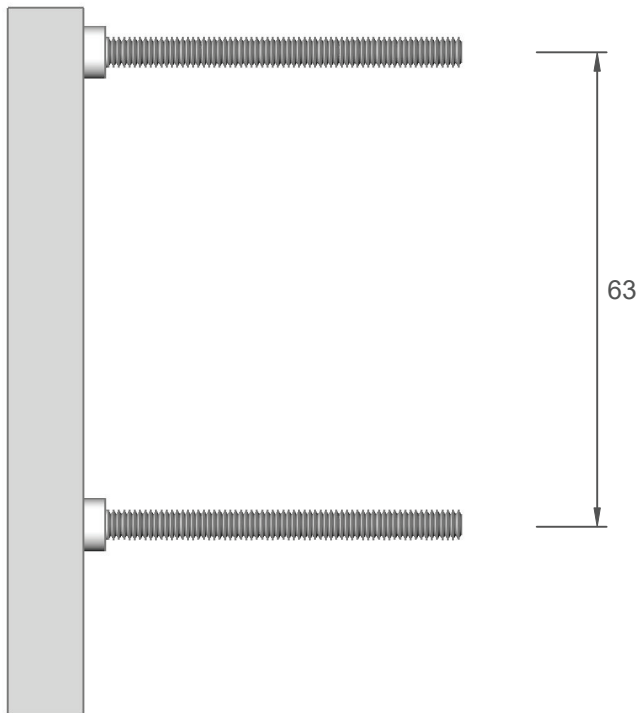
Item Number	Finish
HIB-N6-SS	Brushed Stainless Steel
HIB-N6-WHI	Powdercoated White
HIB-N6-BLK	Powdercoated Black
304 Grade Stainless Steel Plate - Laser Cut 10mm Thickness - Solid	
HIB-N6-CS	Rusted
Corten Steel Plate - Laser Cut 6mm Thickness - Solid	

**Please note:** Dimensions are subject to change. Prior to installation the dimensions on the actual number, or letter, should be checked.



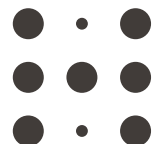


Installation - Fold here & use 1:1 template to mark holes for drilling.

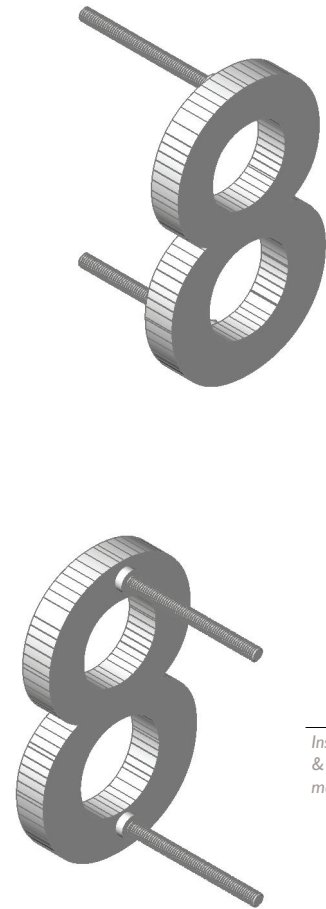
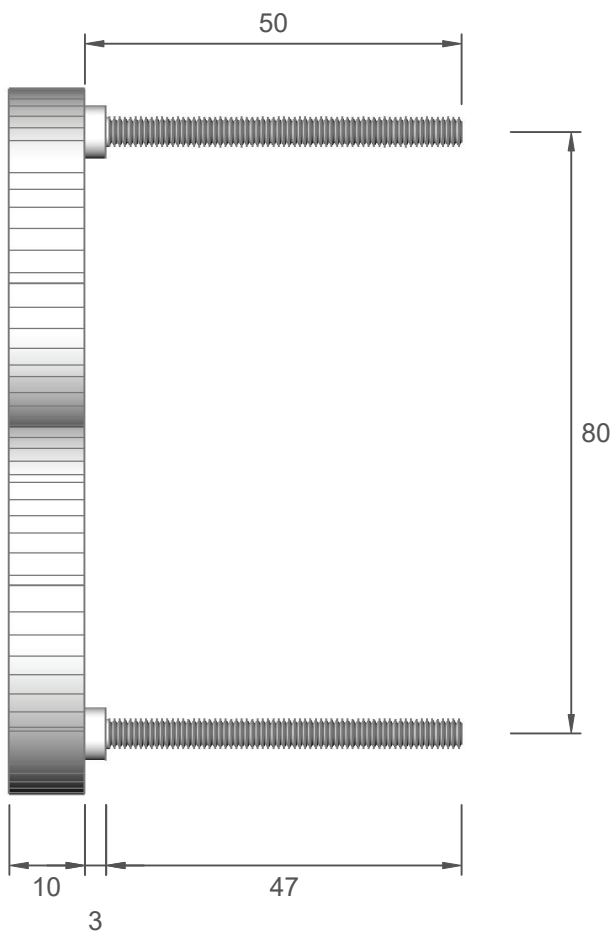
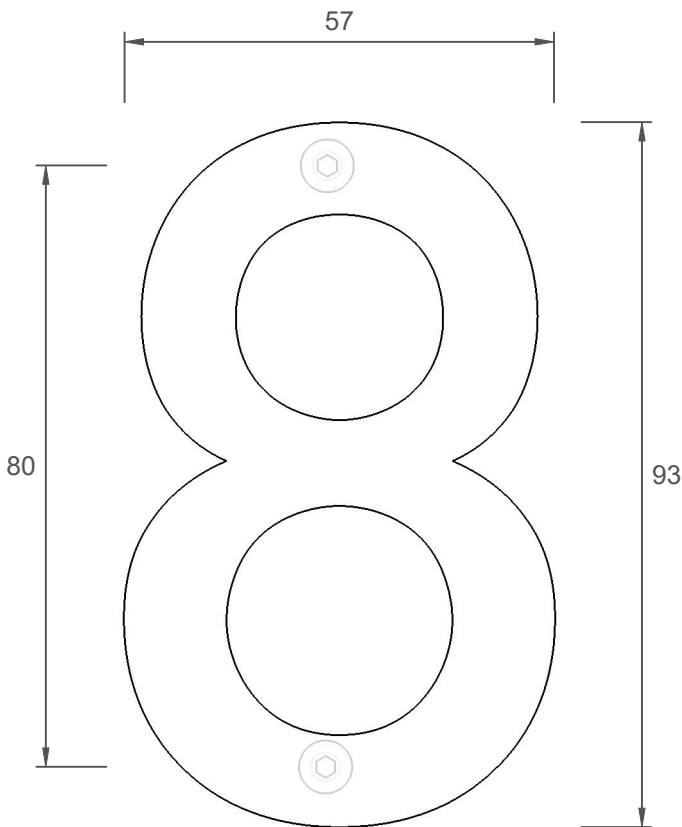


Item Number	Finish
HIB-N7-SS	Brushed Stainless Steel
HIB-N7-WHI	Powdercoated White
HIB-N7-BLK	Powdercoated Black
304 Grade Stainless Steel Plate - Laser Cut 10mm Thickness - Solid	
HIB-N7-CS	Rusted
Corten Steel Plate - Laser Cut 6mm Thickness - Solid	

Please note: Dimensions are subject to change. Prior to installation the dimensions on the actual number, or letter, should be checked.



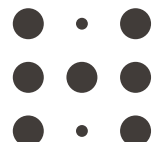


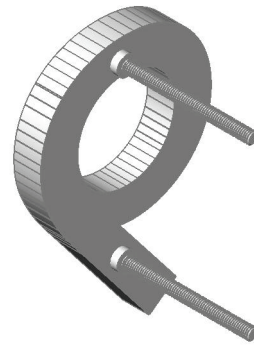
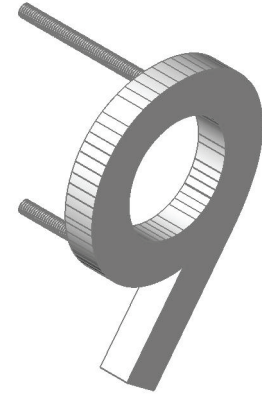
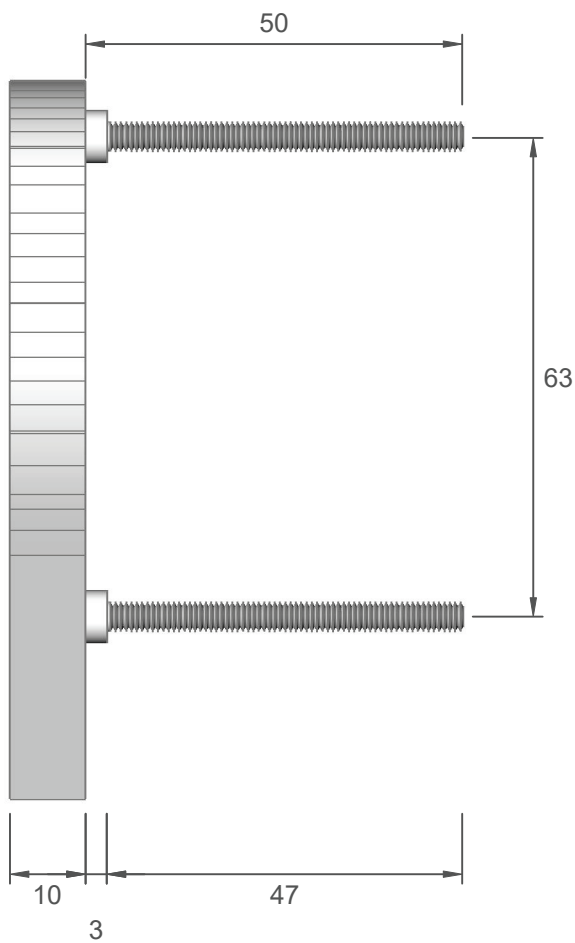
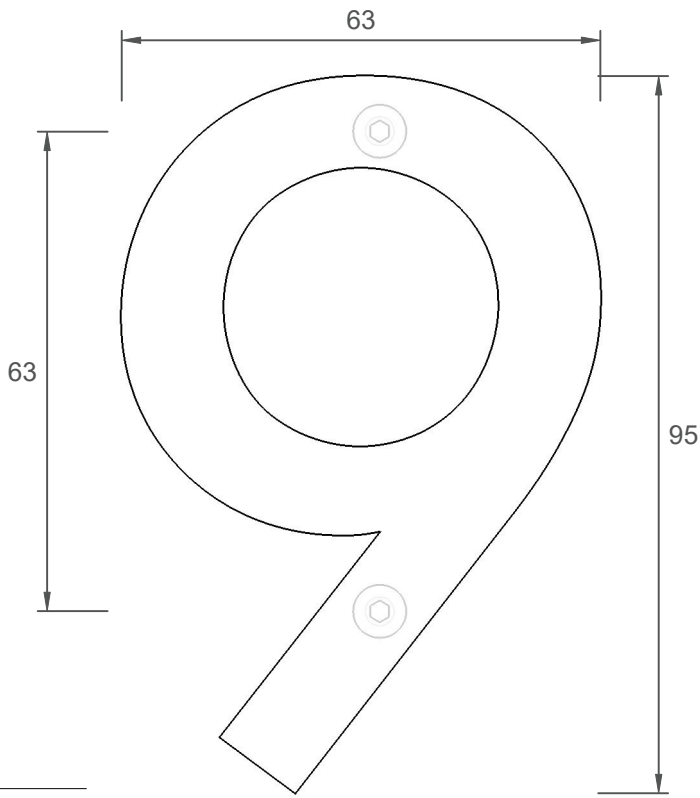


Installation - Fold here & use 1:1 template to mark holes for drilling.

Item Number	Finish
HIB-N8-SS	Brushed Stainless Steel
HIB-N8-WHI	Powdercoated White
HIB-N8-BLK	Powdercoated Black
304 Grade Stainless Steel Plate - Laser Cut 10mm Thickness - Solid	
HIB-N8-CS	Rusted
Corten Steel Plate - Laser Cut 6mm Thickness - Solid	

**Please note:** Dimensions are subject to change. Prior to installation the dimensions on the actual number, or letter, should be checked.

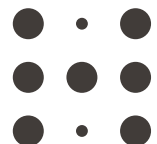




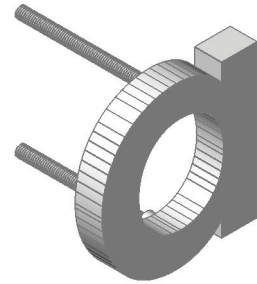
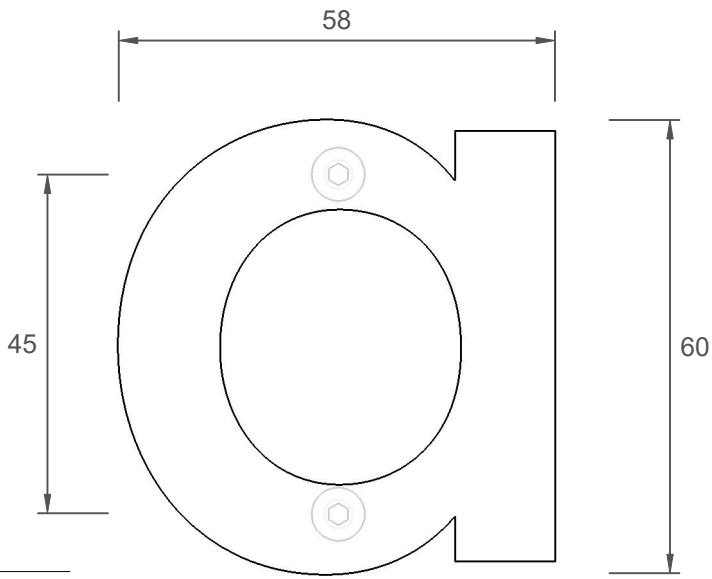
Installation - Fold here & use 1:1 template to mark holes for drilling.

Item Number	Finish
HIB-N9-SS	Brushed Stainless Steel
HIB-N9-WHI	Powdercoated White
HIB-N9-BLK	Powdercoated Black
304 Grade Stainless Steel Plate - Laser Cut 10mm Thickness - Solid	
HIB-N9-CS	Rusted
Corten Steel Plate - Laser Cut 6mm Thickness - Solid	

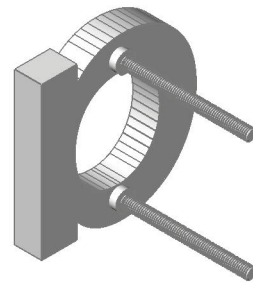
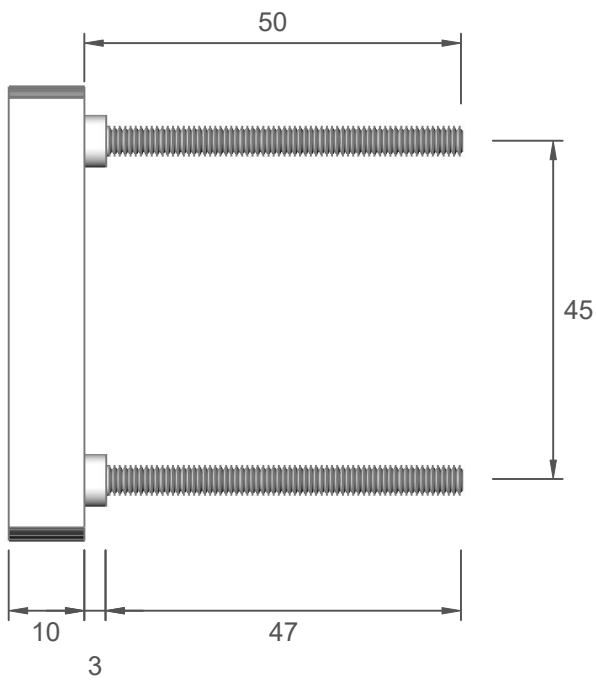
Please note: Dimensions are subject to change. Prior to installation the dimensions on the actual number, or letter, should be checked.



a

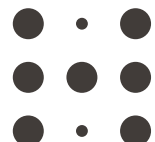


Installation - Fold here & use 1:1 template to mark holes for drilling.

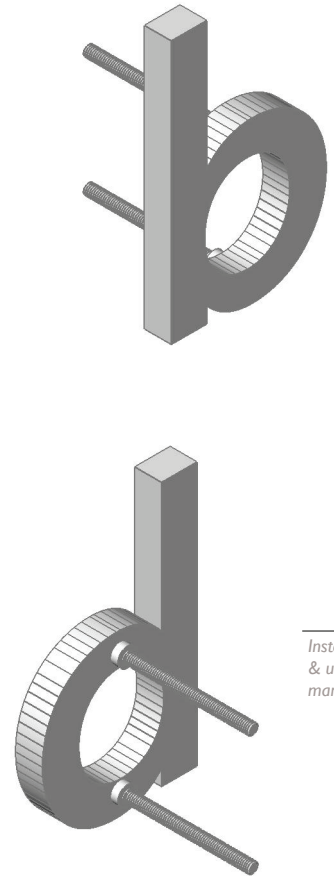
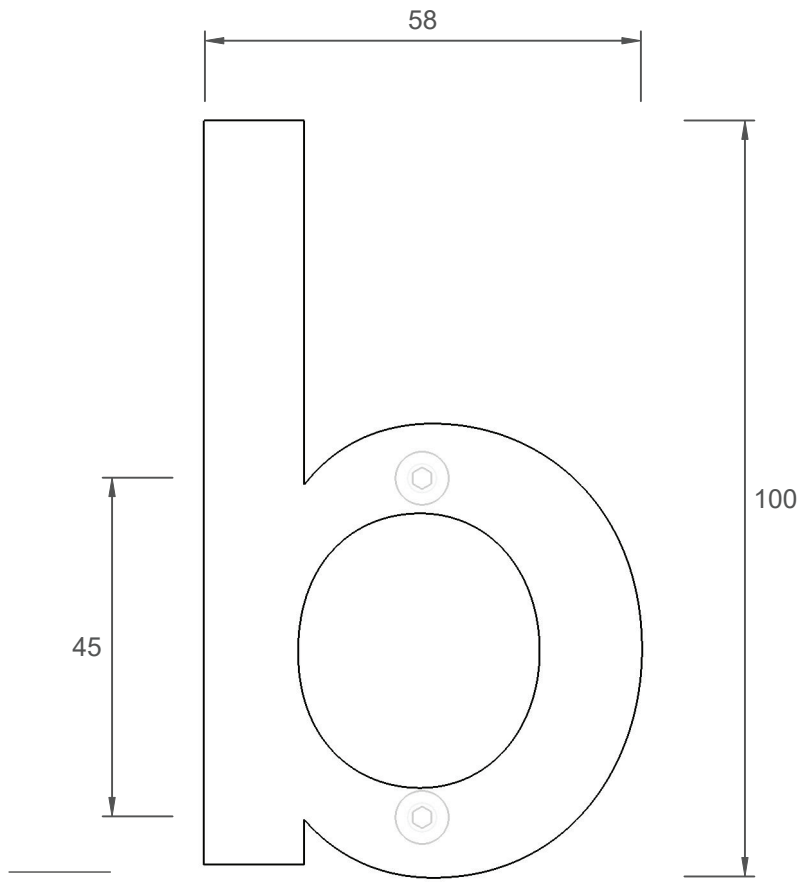


Item Number	Finish
HIB-La-SS	Brushed Stainless Steel
HIB-La-WHI	Powdercoated White
HIB-La-BLK	Powdercoated Black
304 Grade Stainless Steel Plate - Laser Cut 10mm Thickness - Solid	
HIB-La-CS	Rusted
Corten Steel Plate - Laser Cut 6mm Thickness - Solid	

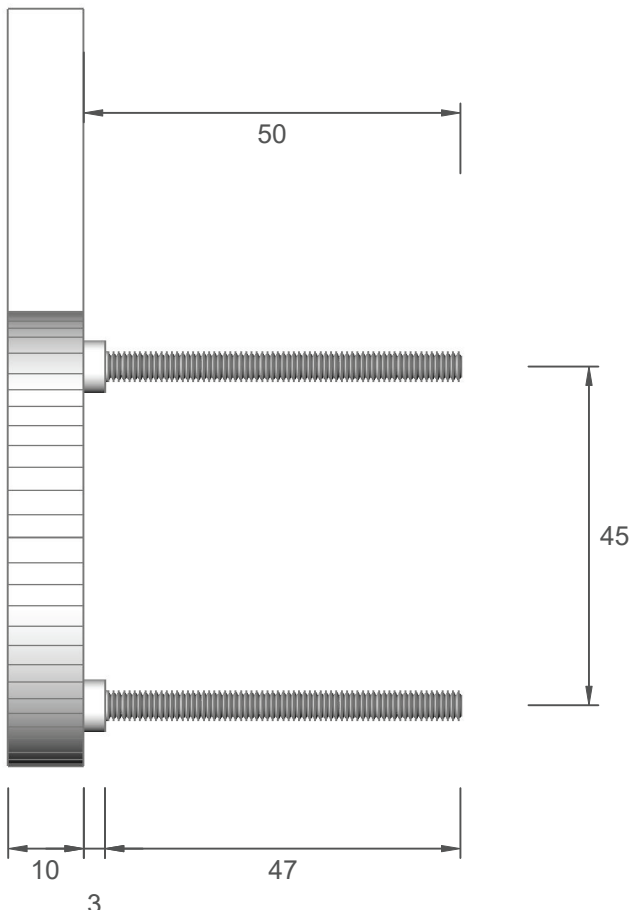
Please note: Dimensions are subject to change. Prior to installation the dimensions on the actual number, or letter, should be checked.



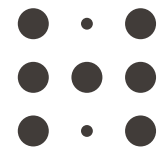
b



Installation - Fold here & use 1:1 template to mark holes for drilling.

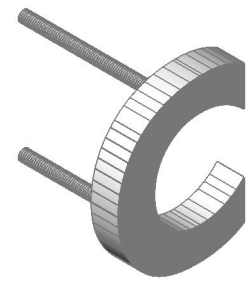
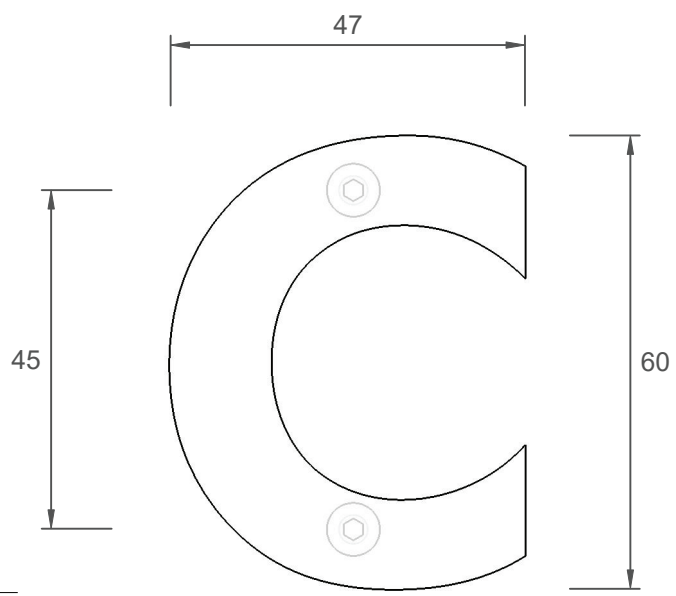


Item Number	Finish
HIB-Lb-SS	Brushed Stainless Steel
HIB-Lb-WHI	Powdercoated White
HIB-Lb-BLK	Powdercoated Black
304 Grade Stainless Steel Plate - Laser Cut 10mm Thickness - Solid	
HIB-Lb-CS	Rusted
Corten Steel Plate - Laser Cut 6mm Thickness - Solid	
<b>Please note:</b> Dimensions are subject to change. Prior to installation the dimensions on the actual number, or letter, should be checked.	

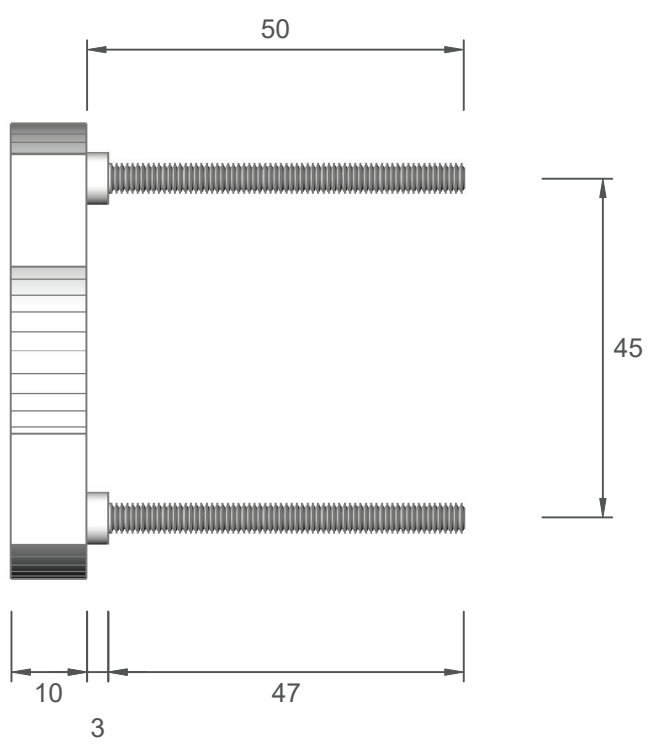
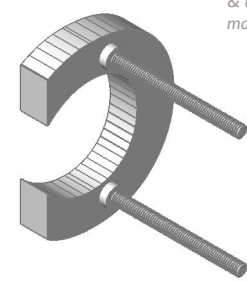


HIBERNATE

C



Installation - Fold here & use 1:1 template to mark holes for drilling.



Item Number	Finish
HIB-Lc-SS	Brushed Stainless Steel
HIB-Lc-WHI	Powdercoated White
HIB-Lc-BLK	Powdercoated Black
304 Grade Stainless Steel Plate - Laser Cut 10mm Thickness - Solid	
HIB-Lc-CS	Rusted
Corten Steel Plate - Laser Cut 6mm Thickness - Solid	

**Please note:** Dimensions are subject to change. Prior to installation the dimensions on the actual number, or letter, should be checked.

