

BRUVI® BV-01 BREWER

# Getting Started



Contents

Cleansing Cycle ..... 03

Important Safeguards ..... 04

Do’s & Don’ts ..... 06

Meet Your Bruvi® BV-01 Brewer ..... 07

Getting to Know the Bruvi® Touchscreen ..... 08

Default Settings for Beverage Types ..... 09

Brewing Your First Cup ..... 10

Beverage Customization Options ..... 11

Adjusting for Different Cup Sizes ..... 12

Sleep & Standby Modes ..... 13

Bruvi® App & Wi-Fi® ..... 14

Inserting the Water Filter ..... 15

Cleaning & Maintenance ..... 16

Troubleshooting ..... 17

Warranty ..... 18

FIRST THINGS FIRST

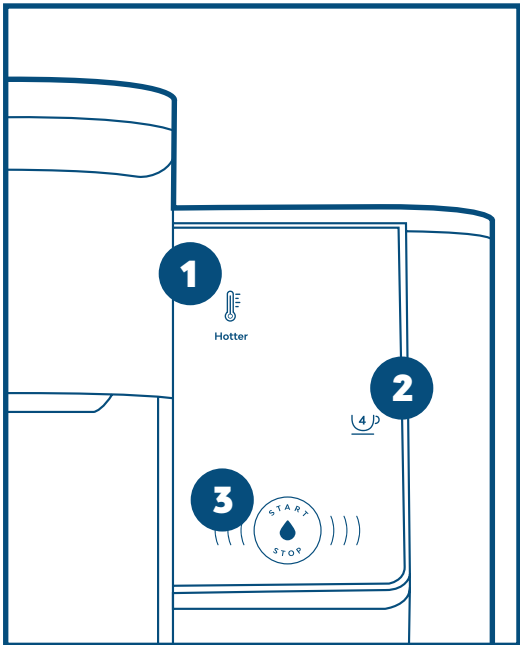
CLEANSING CYCLE

Your new Bruvi® brewer MUST go through the cleansing cycle before brewing a B-Pod®.

1. Remove and rinse the water tank, fill with room temperature, filtered water to the maximum fill line, then reattach to the brewer.
2. Be sure there is no B-Pod® in the pod chamber and lower the handle.
3. Place a mug on the drip tray.
4. Plug the power cord into an electrical outlet.
5. Press these three buttons in the following order: **Hotter**, **4 oz**, **Start/Stop** (Fig. A).
6. Once all the progress bars turn from white to green, the cleansing cycle is complete. You’re now ready to brew.

*You can STOP the cleansing cycle by pressing the **Start/Stop** button, but you’ll have to repeat step 5 to complete the process.*

See page 7 for a tour of your BV-01 brewer.



A  
(Step 5)

# IMPORTANT SAFEGUARDS

When using electrical appliances, basic safety precautions should always be followed to avoid the risk of personal injury or damage to the brewer, including the following. If any of these warnings or notices occurs or continues to occur, contact Bruvi® Customer Care immediately.

## READ ALL INSTRUCTIONS

1. This brewer is intended for household use only.
2. Do not operate any appliance with a damaged cord or plug or after the appliance malfunctions, or has been damaged in any manner. Return appliance to the nearest authorized service facility for examination, repair or adjustment. At the first sign of defects or unusual noises, turn off the appliance and unplug it.
3. Do not touch hot surfaces. Use the handle.
4. Do not leave the power cord near hot surfaces, sharp edges or other sharp objects. When disconnecting the brewer, pull on the plug, not the cord.
5. Only connect the brewer to power outlets complying with the requirements of law. Make sure that the power supply voltage matches the rating shown on the data plate on the bottom of the brewer.

6. Do not let the power cord dangle. Position the cord so there is no risk of tripping.
7. To avoid the risk of fire, set the brewer on a flat, heat-resistant surface. Only use and store the brewer indoors. Do not store the brewer in an environment lower than 32°F as frost may damage the brewer.
8. Close supervision is necessary when any appliance is used by or near children or any person with reduced physical, sensory or mental capabilities.
9. Never lift the handle while the brewer is operating.
10. The Bruvi® brewer is designed to work exclusively with Bruvi® B-Pods®, and vice versa. Do not use pods designed for other single-serve systems with this brewer. Also, do not use B-Pods® with brewers manufactured by other companies. If the pod does not fit, do not force the pod into the appliance.
11. Only use water for the brewer. Do not put any other liquids or food products in the brewer. Do not mix or add anything to the water placed in the brewer. The only exception is descaling solution.
12. Never place your hands inside the pod chamber as there is danger of injury. Never remove parts of the brewer. Do not insert objects into the openings as there is risk of electric shock.
13. **WARNING: TO REDUCE THE RISK OF FIRE OR ELECTRIC SHOCK, DO NOT REMOVE THE BASE COVER. NO USER SERVICEABLE PARTS ARE INSIDE. REPAIR SHOULD BE DONE ONLY BY AUTHORIZED PERSONNEL.**
14. Unplug from outlet when not in use and before cleaning. Allow to cool before putting on or taking off parts, and before cleaning the appliance.
15. Rinse and descale the brewer regularly. Visit [help.bruvi.com](http://help.bruvi.com) for instructions.
16. Make sure the electrical elements, plug and cord are dry.
17. To protect against fire, electric shock and injury to persons do not immerse cord, plugs or brewer in water or other liquid.
18. Keep the brewer at least 4 inches away from walls or other objects during operation. Do not place any objects on top of the brewer while it is operating.
19. Do not cover or place any object over the ventilation openings on the top of the brewer.
20. If you do not expect to use the brewer for an extended period of time, unplug it.
21. The use of accessory attachments not recommended by the appliance manufacturer may result in fire, electric shock or injury to persons.
22. Do not let cord hang over edge of table or counter, or touch hot surfaces.
23. Do not place on or near a hot gas or electric burner, or in a heated oven.
24. Always attach plug to appliance first, then plug cord into the wall outlet. To power off, remove plug from electrical outlet.
25. Do not use appliance for other than intended use.

26. Scalding may occur if the lid is removed during the brewing cycles.

## WARNING:

To avoid the risk of injury, do not open the brew chamber during the brew process.

## SPECIAL CORD SET INSTRUCTIONS

A standard power cord is provided. Extension cords may be used if care is exercised in their use. If an extension cord is used, the marked electrical rating of the extension cord must be at least as great as the electrical rating of the brewer, and the longer cord should be arranged so that it will not drape over the countertop or tabletop where it can be pulled on by children or tripped over. If the appliance is of the grounded type, the extension cord should be a grounding type 3-wire cord.

## SAVE THESE INSTRUCTIONS FOR HOUSEHOLD USE ONLY



## Things to Know

### Freshness You Can Hear

When you insert a B-Pod® and lower the brewer handle, you'll hear a distinctive crunch sound. That Freshness Crunch is the sound of opening the B-Pod® airtight seal. Press the handle down all the way to be sure the B-Pod® is punctured.

### Bruvi® Brews Differently

You'll see liquid change from coffee to hot water. That's a normal part of our smart brewing process to ensure it extracts the best tasting aspects of the coffee.

## BRUVI® BASICS

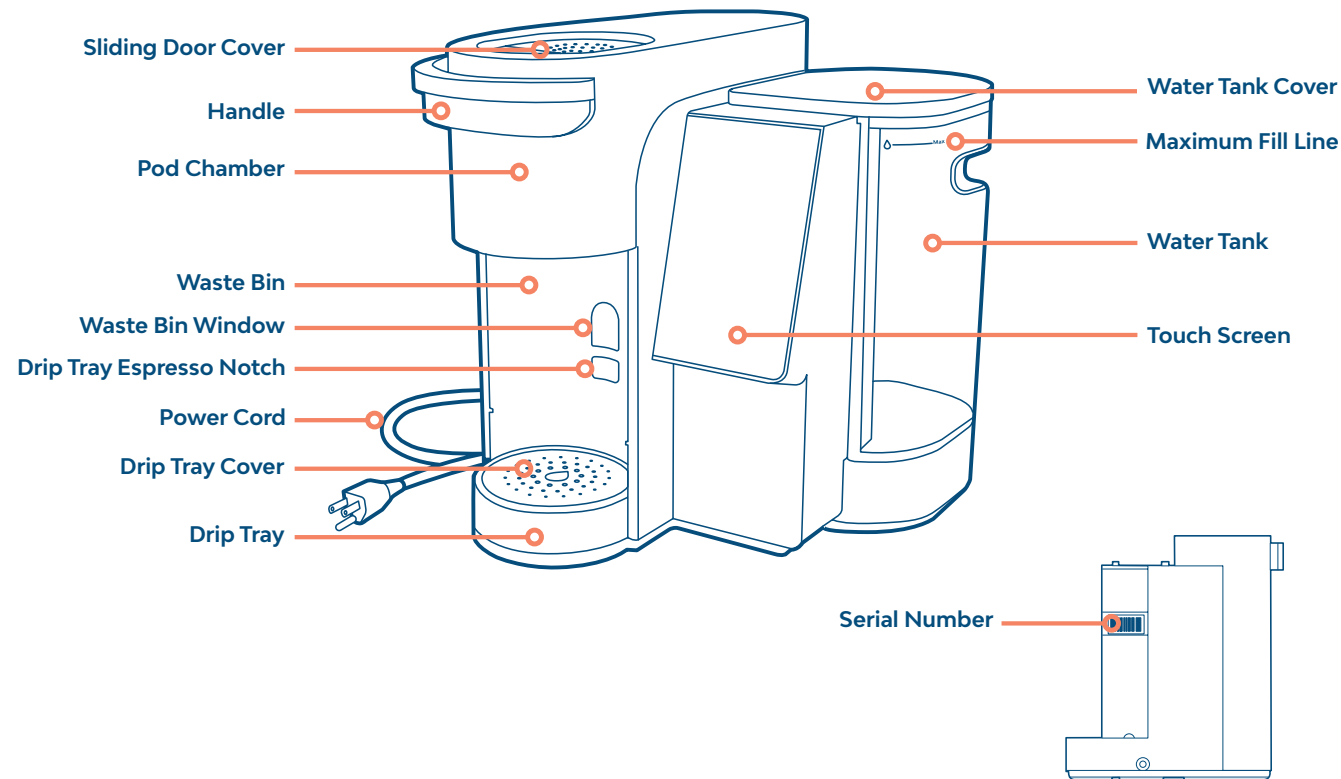
### Do's & Don'ts

To ensure that you have a smooth brewing experience, keep these points in mind:

- Only use authorized B-Pods® and accessories with the Bruvi® brewer. Using any other single-serve pods made for other single-serve systems and unauthorized pod accessories may damage the Bruvi® brewer. Such use may void the brewer warranty.
- Coffee B-Pods® and espresso B-Pods® are not interchangeable. Be sure to select the type of B-Pod® that matches your desired beverage.
- Never reuse a used B-Pod®.
- If you insert a B-Pod® and don't want to use it, do not try to remove it with your hands. Simply lower the handle, lift it, and let the B-Pod® fall into the waste bin. It cannot be reused.
- Only use room temperature, filtered water to fill the brewer.
- Never lift the handle in the middle of a brewing cycle.
- Do not remove cup until brewing is complete. When complete, you'll hear the chime sounds and the touch screen will revert to standby mode.
- Do not brew iced coffee or cold brew directly in a glass cup with ice.

## BRUVI® BASICS

### Meet Your Bruvi® BV-01 Brewer



## Things to Know

### Start Me Up

Note that there is no On/Off switch. The Bruvi® brewer will power up when it's plugged in and then go into sleep mode after ten minutes of inactivity.

### Change Your Mind?

Beverage customization options can be enabled/disabled with a simple tap.

### Clean Hot Water

**Hot Water** button dispenses clean water, without residue from other brewed beverages.

## THE BRUVI® TOUCH SCREEN

# Getting to Know the Bruvi® Touch Screen

Bruvi® offers true one-touch brewing, as well as the ability to adjust cup size and beverage options.



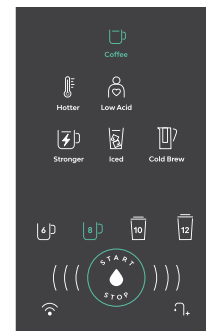
\*To dispense hot water, lower the handle, press **Hot Water** button, then press **Start/Stop** button.

## THE BRUVI® TOUCH SCREEN

# Default Settings for Beverage Types

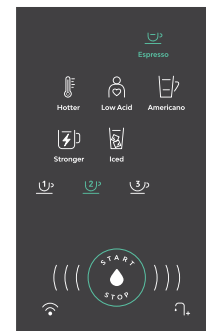
When you insert a B-Pod® into the pod chamber, the brewer will 1) recognize the type of beverage 2) display the relevant brewing options and 3) preselect a default cup size.

### Coffee B-Pod®



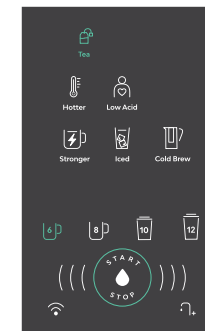
Default cup size:  
8 oz

### Espresso B-Pod®



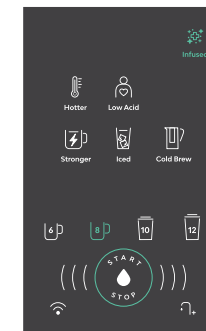
Default cup size:  
2 oz

### Tea B-Pod®



Default cup size:  
6 oz

### Infused B-Pod®



Default cup size:  
8 oz

*Default cup size may vary for some individual B-Pod® varieties. Actual beverage volume may vary from the cup size selected.*

## Things to Know

### Coffee Versus Espresso

Use a coffee B-Pod® for **Coffee** (hot, iced or cold brew). Use an espresso B-Pod® for **Espresso** or **Americano**.

### High Altitude Brewing

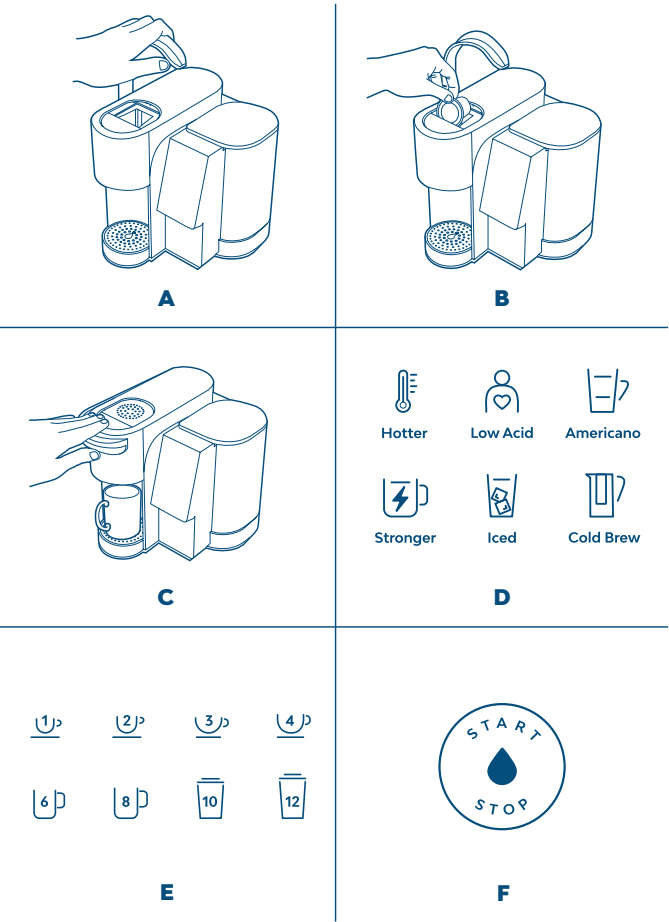
If you live 5,000+ feet above sea level, you'll need to use High Altitude mode. This ensures that the water won't boil at your elevation. Simply press the **Hotter + Cold Brew** buttons at the same time for five seconds until they blink green. To revert to regular brewing, repeat the same process and the buttons will blink white.

# Brewing Your First Cup

- 1. Lift the handle to open the sliding door cover (Fig. A).
- 2. Insert a B-Pod® into the pod chamber, with the pod top facing forward (Fig. B).
- 3. Lower the handle. Place a cup or mug on the drip tray (Fig. C).
- 4. Use the default settings or select from the other available customization options and sizes (Fig. D & E).
- 5. To start brewing, simply press the **Start/Stop** button (Fig. F). *If you need to stop brewing mid-cycle, press the **Start/Stop** button.*
- 6. The chimes will sound when brewing is complete. Enjoy!

## Auto Optimized Brewing in Action

The brewer scans and recognizes each B-Pod® and auto adjusts brew parameters for the optimal brew, just like the roaster intended.



# Beverage Customization Options

 <b>Hotter</b> Heats the water an additional 3° to 9° F, depending on the B-Pod® inserted	 <b>Low Acid</b> Brews coffee with reduced acidity (and caffeine) for a smoother taste	 <b>Americano</b> Brews a true Americano by adding hot water to an espresso*
 <b>Stronger</b> Increases the concentration of the coffee for stronger taste without bitterness	 <b>Iced</b> Brews like hot coffee but lowers the temperature to minimize dilution when you add ice	 <b>Cold Brew</b> Brews at a lower temperature and longer time for smoother, less acidic flavor**

⚠ Do not brew iced coffee or cold brew directly in a glass cup with ice.

## Things to Know

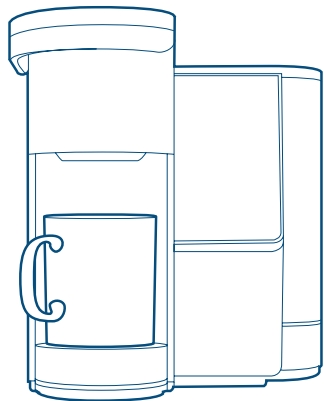
### Can I Combine Options?

Most options can be combined, but some options cannot be selected together, such as **Hotter** and **Iced**.

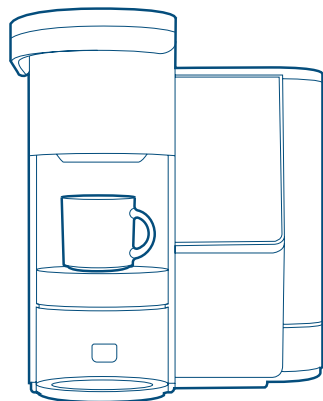
\***Americano** option is only available for espresso B-Pods®.

\*\***Cold Brew** brews in intervals and takes up to eight minutes to complete. For an extra cold beverage, add ice.

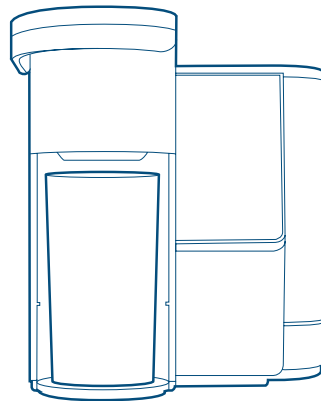
## Adjusting for Different Cup Sizes



For **coffee mugs**, ensure the drip tray is in the base, inserting the tab into the lowest notch of the waste bin. Place the mug on the drip tray.



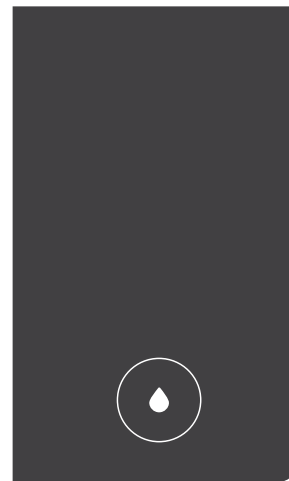
For **espresso cups**, place the drip tray in the upper position, inserting the tab on the back of the drip tray into the Drip Tray Espresso Notch. Be sure it rests securely.



For **tall travel mugs**, pull the drip tray away from the base of the brewer and place the mug directly on the base.

## Sleep & Standby Modes

### Sleep Mode



- To save energy, the brewer goes into sleep mode when inactive for ten minutes.
- In sleep mode, only the water droplet icon lights up.
- The brewer wakes up when you:
  - Press the water droplet icon
  - Remove or insert the water tank
  - Lift or lower the handle
- To program the touch screen to be completely dark in sleep mode, visit [help.bruvi.com](https://help.bruvi.com) for instructions.

### Standby Mode



Once you wake up the brewer (and the handle is lowered), the touch screen returns to standby mode.

## Bruvi® App & Wi-Fi®



The Bruvi® App allows you to connect the BV-01 brewer to Wi-Fi® for extra features and functionality.

- Remote control the brewer from your phone
- Schedule brews ahead of time (up to 36 hours in advance)
- View detailed brewing history
- Receive notifications, such as descaling alerts

The Bruvi® App is not required to operate the brewer.

Wi-Fi® is a registered trademark of Wi-Fi Alliance®

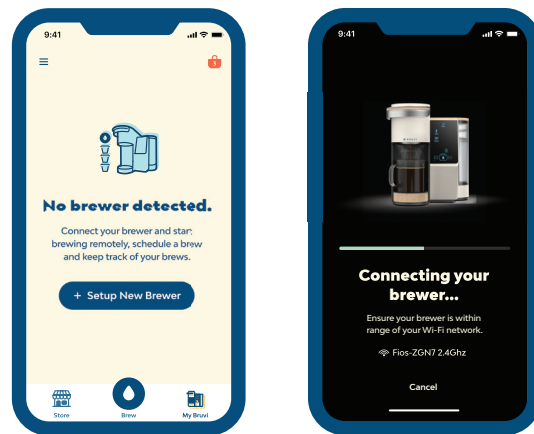
### To Connect Your Brewer to Wi-Fi®

1. Download the Bruvi® App by scanning this QR code with your smartphone's camera. Or, download it in your phone's app store.
2. In the App, create or log into your Bruvi® account.
3. Tap on the **Brew** or **My Bruvi** buttons at the bottom of the screen and select "Setup New Brewer" (Fig. A).



Only supports 2.4GHz networks.

If you need help connecting, visit [help.bruvi.com](https://help.bruvi.com)



A

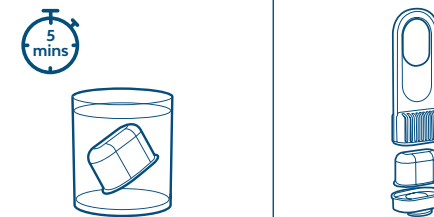
## Inserting the Water Filter

Use of the Bruvi® water filter is strongly recommended to ensure the best tasting coffee. The water filter helps eliminate chlorine, minerals and other impurities from the water.

### Instructions

1. Remove the filter from the polybag. Immerse the filter in cold tap water and soak for five minutes. Then rinse for one minute (Fig. A).
2. Remove the base from the water filter holder and insert the rinsed filter into the underside of the holder. Reinsert the base into the holder, and be sure the filter is securely sealed inside (Fig. B).
3. Slide the water filter holder into the channels in the base of the water tank, pushing down to be sure it fits securely (Fig. C).

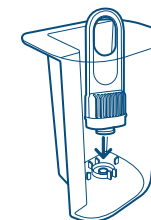
Replace the water filter every 60 days.  
Replacement filters can be purchased at [bruvi.com](https://bruvi.com)



A



B



C



# Cleaning & Maintenance

Regular cleaning and maintenance are part of using your brewer. Use the cleaning schedule below to keep your brewer working at optimum performance.

Maintenance	Frequency	Time to Complete
General cleaning	Once a week or as needed	As needed
Empty and rinse drip tray and waste bin	Once a week or as needed	2 minutes
Descaling	<b>Americano</b> and <b>1 oz</b> icons will blink together after every 65 liters (about two to three months).	10 minutes

 **Do not wash any removable components in the dishwasher.**

# Troubleshooting

## Emptying the Waste Bin

The waste bin holds five to six B-Pods®. When full, the brewer won't accept a new B-Pod® for brewing until you empty the waste bin.

## Error Notifications

If the brewer encounters an issue, it will indicate it's in an error state by blinking a pair of icons. When this happens, please unplug and re-plug the power cable from the outlet to restart the brewer. If the problem persists, note which pair of icons are blinking and contact Bruvi® Customer Care.

## Descaling

Descaling is the process of cleaning the inside of your brewer and removing any mineral buildup to ensure the longevity of your brewer. The brewer needs to be descaled after every 65 liters of water used. You'll know it's time when the **Americano** and **1 oz** icons blink together. You are able to postpone descaling for up to 5 more liters of water. After that, the brewer will not function until you descale.

For complete instructions on descaling, please visit [help.bruvi.com](https://help.bruvi.com)



## Bruvi® Customer Care

Email: [hello@bruvi.com](mailto:hello@bruvi.com)  
Call/Text: 1-855-701-1792  
Website: [help.bruvi.com](https://help.bruvi.com)

## Other Issues?

If you're having any other issues, check out the help section at [help.bruvi.com](https://help.bruvi.com) or reach out to our Customer Care team.

#### LIMITED WARRANTY

Bruvi® warrants this product against defects in materials and workmanship under normal home use for one (1) year from the date of purchase. The warranty period commences on the date of purchase.

During the warranty period, Bruvi® will either repair or replace, at its option, any defective product at no charge to the owner. If a replacement brewer is necessary to service this warranty, the replacement brewer may be new or reconditioned. To commence a warranty inquiry, please call (855) 701-1792 (toll free in the United States), and a customer service representative will be happy to help you. Proof of original purchase directly from Bruvi® or an authorized distributor, reseller or retailer is required. The replacement products will be warranted only for the unexpired portion of the original warranty except as otherwise required under applicable law.

This limited warranty does not apply to the cosmetic damage or any defect resulting from accident, negligence, misuse, failure to follow the product instructions, calcium deposits, improper or inadequate maintenance or repair by anyone other than Bruvi®, normal wear and tear, use for commercial purposes, use on electrical current or voltage other than as marked on the product, product alteration, fire, lightning, flood or other external causes.

To extent permitted by applicable law, this limited warranty does not cover consequential or incidental damages such as bodily injury, death of any person or damage to real or tangible, personal property.

This limited warranty is only valid in the country of purchase.

The terms of this limited warranty do not exclude, restrict or modify mandatory statutory rights, if any, applicable to the sale of this product in your country of purchase.

If you believe your product is defective, contact Bruvi® Customer Care in the country of purchase. Visit [help.bruvi.com](http://help.bruvi.com) for contact details, instructions and other requirements for warranty service.

#### LIMITED WARRANTY DOES NOT COVER

THIS WARRANTY DOES NOT COVER CONSEQUENTIAL OR INCIDENTAL DAMAGES SUCH AS BODILY INJURY, DEATH OR ANY PERSON OR DAMAGE TO REAL OR TANGIBLE PROPERTY AND DOES NOT COVER INCIDENTAL COSTS AND EXPENSES RESULTING FROM ANY BREACH OF THIS WARRANTY, EVEN IF FORESEEABLE. Some states or provinces do not allow the exclusion or limitations of incidental or consequential damages, so the above limitation or exclusion may not apply to you depending on the state or province of purchase. Nor does this warranty cover damages caused by the use of unauthorized accessories, services performed by anyone other than Bruvi® or its authorized service providers, use of parts other than genuine Bruvi® parts, or external causes such as abuse, misuse, inappropriate power supply or acts of God.

#### OTHER LIMITATIONS

THIS LIMITED WARRANTY IS EXCLUSIVE AND IS IN LIEU OF ANY OTHER EXPRESS WARRANTY, WHETHER WRITTEN OR ORAL. IN ADDITION, BRUVI® HEREBY SPECIFICALLY DISCLAIMS ALL OTHER WARRANTIES WITH RESPECT TO THE BREWER, INCLUDING ANY IMPLIED WARRANTY OF MERCHANTABILITY OR FITNESS FOR ANY PARTICULAR PURPOSE. Some states or provinces do not allow disclaimers of such implied warranties or limitations on how long an implied warranty lasts, so the above limitation may not apply to you depending on the state or the province of purchase.



**Unique Identifier (Model Name):** BV-01

**Company Name:** Bruvi®

**Company Address:** 9641 S. Santa Monica Blvd.  
Beverly Hills, CA 90210

**Telephone Number or Internet Contact Information:**  
1-855-701-1792 or [help.bruvi.com](http://help.bruvi.com)

This device complies with part 15 of the FCC Rules and contains license-exempt transmitter(s)/receiver(s) that comply with Innovation, Science and Economic Development Canada's license-exempt RSS(s). Operation is subject to the following two conditions: (1) This device may not cause harmful interference, and (2) this device must accept any interference received, including interference that may cause undesired operation.

Caution: Changes or modifications to this unit not expressly approved by the party responsible for compliance could void the user's authority to operate the equipment.

NOTE: This equipment has been tested and found to comply with the limits for a Class B digital device, pursuant to part 15 of the FCC Rules. These limits are designed to provide reasonable protection against harmful interference in a residential installation. This equipment generates, uses and can radiate radio frequency energy and, if not installed and used in accordance with the instructions, may cause harmful interference to radio communications. However, there is no guarantee that interference will not occur in a particular installation. If this equipment does cause harmful interference to radio or television reception, which can be determined by turning the equipment off and on, the user is encouraged to try to correct the interference by one or more of the following measures:

- Reorient or relocate the receiving antenna.
- Increase the separation between the equipment and receiver.
- Connect the equipment into an outlet on a circuit different from that to which the receiver is connected.
- Consult the dealer or an experienced radio/TV technician for help.



HAVE QUESTIONS?

## Bruvi® Customer Care

Email: [hello@bruvi.com](mailto:hello@bruvi.com)

Call/Text: 1-855-701-1792

Website: [help.bruvi.com](http://help.bruvi.com)

Full user manual available at  
[help.bruvi.com](http://help.bruvi.com)

## Get Connected.

SCAN ME  
USING YOUR  
SMARTPHONE  
CAMERA!



Download the Bruvi® App  
to unlock cool features  
like remote brewing!



App Store® is a service mark of Apple Inc.

Google Play and the Google Play logo are trademarks of Google LLC.

## That's It!

To order B-Pods® and accessories,  
please visit [bruvi.com](http://bruvi.com)

Welcome to the Bruvi® family.  
Let's get brewing!