

ester & erik

COLOUR CATALOGUE 2024

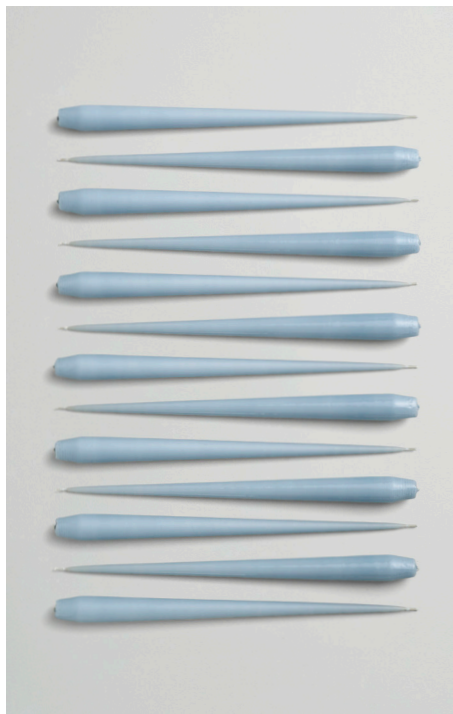
SPRING / SUMMER

High-quality candles
coloured by hand in Silkeborg, Denmark.

Our candles are coloured by hand in 94 elegant colours
to tastefully light up any season and occasion.

We are continually developing new shades and tints,
ensuring you can always find just what you are looking
for in our large colour universe.

NEW 2024 COLOUR



SPRING/SUMMER



NO. 83
DUSTY BLUE

Soothing blue with subtle
greyish shading

THE LIGHT NEUTRALS



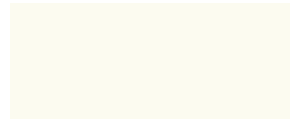
NO. 31
PURE WHITE

The clean lustrous universal white



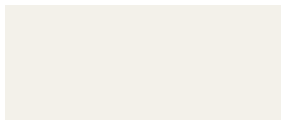
NO. 10
SILKY

Delightful timeless warm toned
off-white



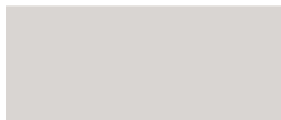
NO. 13
ELDERFLOWER

Luminous off-white with a slightly
yellowish hue



NO. 06
IVORY

Enveloping white with a discreet
greyish-beige note



NO. 21
WHITE ASH

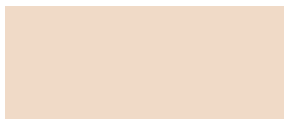
Misty white-grey, with fine
rose note



NO. 22
LINEN GREY

Cold smoky light-medium
grey-beige

THE WARM NATURALS



NO. 11
ICE LATTE

Creamy beige with a calm appearance



NO. 18
NOUGAT NOTE

Delicate cold neutral medium beige-brown



NO. 24
SOFT CLAY

Fine-grained medium toned earth brown



NO. 25
HAZELNUT

Intensely natural warm soft brown



NO. 79
ESPRESSO

Concentrated coffee bean brown, almost black



NO. 77
CAVIAR

Refined greyish-green with brownish overtone

THE COLD SHADES



NO. 09
OYSTER PEARL

Subtle light-medium shadowy
purplish-grey



NO. 09/2
ZINC PEARL

Elegant shadowy purplish-grey,
deeper than no. 09



NO. 42
MUTED MAUVE

Dark greyish-mauve with warm
cloudy shading



NO. 50
AUBERGINE

Intensely blackened
purplish-brown



NO. 75
RAW BLACK

The elegant true black



NO. 74
DARK SLATE

The chic dark anthracite grey



NO. 64
STEEL BLUE

Medium-dark grey with
hints of blue



NO. 71
CONCRETE

Neutral stone-cool urban
mid-grey



NO. 92
SILVER METALLIC

Clean silvery coating with
discreet shine

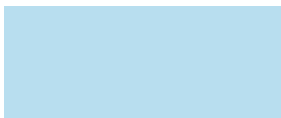
THE BLUISH



new



NO. 83
DUSTY BLUE
Soothing blue with subtle
greyish shading



NO. 59
SKY BLUE
The airy overcast light blue



NO. 37
MOON BLUE
Muted relaxing mid-tone blue



NO. 28
ROYAL BLUE
The classic luminous
dark blue



NO. 48
CORNFLOWER
Illuminated electric
cobalt blue

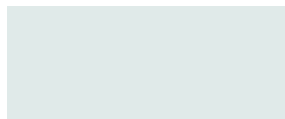


NO. 49
DEEP BLUE
Intense yet luminous
oceanic blue dye



NO. 05
ICY LAVENDER
Blue purplish with cold
greyish shading

THE SOFTER GREENS



NO. 81
ARCTIC BREEZE
Barely tinted, frosty and airy
bluish-green



NO. 67
JADE STONE
Discreet bluish-toned dusty
mineral green



NO. 02
AGAVE
Misty medium-dark, bluish-green
mixture



NO. 70
GREEN SOIL
Refined dusty medium-dark
khaki green



NO. 63
DEEP FOREST
Dense plant life blackened
green-brown

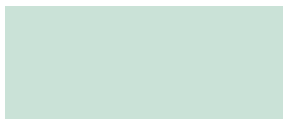


NO. 78
OLIVE GLOW
Luminous olive green with
yellow overtones



NO. 69
ARTICHOKE
Muted elegant, neutral light
tinted khaki

THE GREENISH



NO. 03
WATERMINT

Washed-out mint green with
yellow hue



NO. 66
EUCALYPTUS

Muted mid-tone vegetal green
with yellow hue



NO. 35
APPLE BITE

Bright energizing green on the
yellow side



NO. 62
CUT GRASS

Lively mid-toned yellowish
grass green



NO. 58
MARBLE GREEN

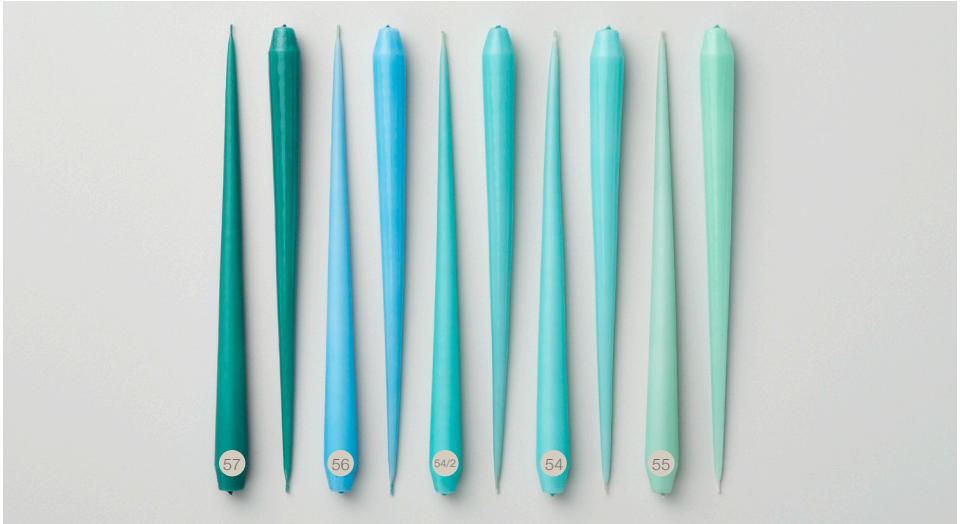
The timeless mineral green,
slightly bluish



NO. 60
NOBLE PINE

The iconic dark bluish-green
pine needle

THE TURQUOISE-MINTY



NO. 57
TEAL TAN

Saturated teal, midway in
blue and green



NO. 56
TURQUOISE

Truly turquoise stone
pigmented blue



NO. 54/2
DEEP LAGOON

Vibrant aquatic turquoise green,
darker than no. 54



NO. 54
LIMPID LAGOON

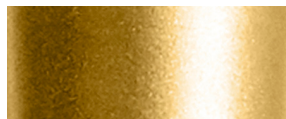
Glowing aquatic turquoise
green clarity



NO. 55
COOL MINT

Refreshing luminous
minty green

THE YELLOWISH



NO. 90
GOLD METALLIC

Warm gold shimmer, as wrapped
gold leaf



NO. 27
ALMOND BUTTER

Soothing brown with a soft
camel hue



NO. 04
SUNGLOW

Cheerful orange yellow reflecting
sunshine without blinding



NO. 14/2
GINGER

Natural medium yellow-beige,
warmer than no. 14



NO. 14
PALE GINGER

Softened natural light
yellow-beige



NO. 76/2
WARM AMBER

Resin yellow in brownish tint, more
saturated than no. 76



NO. 76
AMBER

Muted aged resin yellow with
golden luster



NO. 43
HONEY BALM

Muted warm yellow flowing
as bee-wax

THE EARTHY NATURALS



NO. 15/2
LEMON

Warm pure lemony yellow, more dense than no. 15



NO. 15
LEMON DROP

Glowing glazed vitamin lemony yellow



NO. 17
BUTTERMILK

Creamy glowing yellow pastel



NO. 61
LINDEN BLOOM

Mildly acidic greenish-yellow pastel



NO. 68
WASABI

Diluted fresh wasabi, mixing green and yellow



NO. 68/2
PURE WASABI

Vibrant fresh green-yellow wasabi, darker than no. 68



NO. 73
SEAWEED

Underwater algae hue of brownish-green-yellow



NO. 23
RAW TOFFEE

Truly rich natural burnt brown with orangey note

THE ROSY ORANGEY



NO. 72
TERRA COTTA
Burnt medium-dark warm
reddish ochre



NO. 20
ROSY CARAMEL
Delicately softened
brownish-rosa beige



NO. 26
CORAL REEF
Refined neon coral with pink
undertones



NO. 29
ROSEHIP
Warm shaded reddish-rosa
with coral note



NO. 80
AGED RUST
Dark iron oxide reddish-brown



NO. 16/2
VIVID ORANGE
Orange freshness more
concentrated than no. 16



NO. 16
MILD ORANGE
Vibrant classic orange freshness

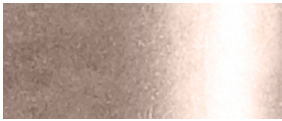


NO. 19/2
MELON
Luminous subtle orange,
darker than no. 19



NO. 19
MELON SORBET
Frozen pastel infused in
subtle orange

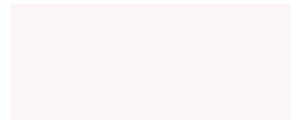
THE SOFT PINKS



NO. 94
CHAMPAGNE METALLIC
Semi-warm shine with subtle
rose reflection



NO. 52
SOFT ROSE
Drained rose-mauve with
greyish overtone



NO. 51
ROSEWATER
Delicate warm rosa note,
barely perceptible



NO. 38
ROSE QUARTZ
Mild and comfy
softened pink



NO. 39
OLD ROSE
Porous powdered, blushing
medium rosa



NO. 40
CHERRY BLOOM
Glowing pale pink,
symbolizing spring

THE PINK-REDS



NO. 41
CLEAR PINK
Lustrous cold light
magenta pink



NO. 41/2
DEEP PINK
Joyful magenta pink, more
intense than no. 41



NO. 82
RASPBERRY
Rich-toned berry red with
bluish note



NO. 30
TRUE RED
The intensely vibrant
bright red



NO. 33
SAFFRON DUST
Warm red with a slight
orangey tinge



NO. 36
WINTER BERRY
The celebrating traditional
deeper red

THE DEEP PURPLE-REDS



NO. 44
WINE

Elegant crushed grape
burgundy-red



NO. 44/2
DEEP WINE

The full-bodied burgundy-red,
darker than no. 44



NO. 46/2
DARK PLUM

Saturated purple-plum, deeper
than no. 46



NO. 46
PLUM SIRUP

Intensely luminous
purple-plum



NO. 45
WILD HEATHER

Muted medium-dark
pinkish-mauve



NO. 34
FUCHSIA

Lush purplish-pink
blossom glow

THE PURPLISH



NO. 47
DUSTY LILAC

Veiled lilac with subtle blueish note



NO. 07
CROCUS DELIGHT

Luminous wildflower purple
with pinkish hue



NO. 12
AIRY VIOLET

Cold and crystal clear
violet pastel



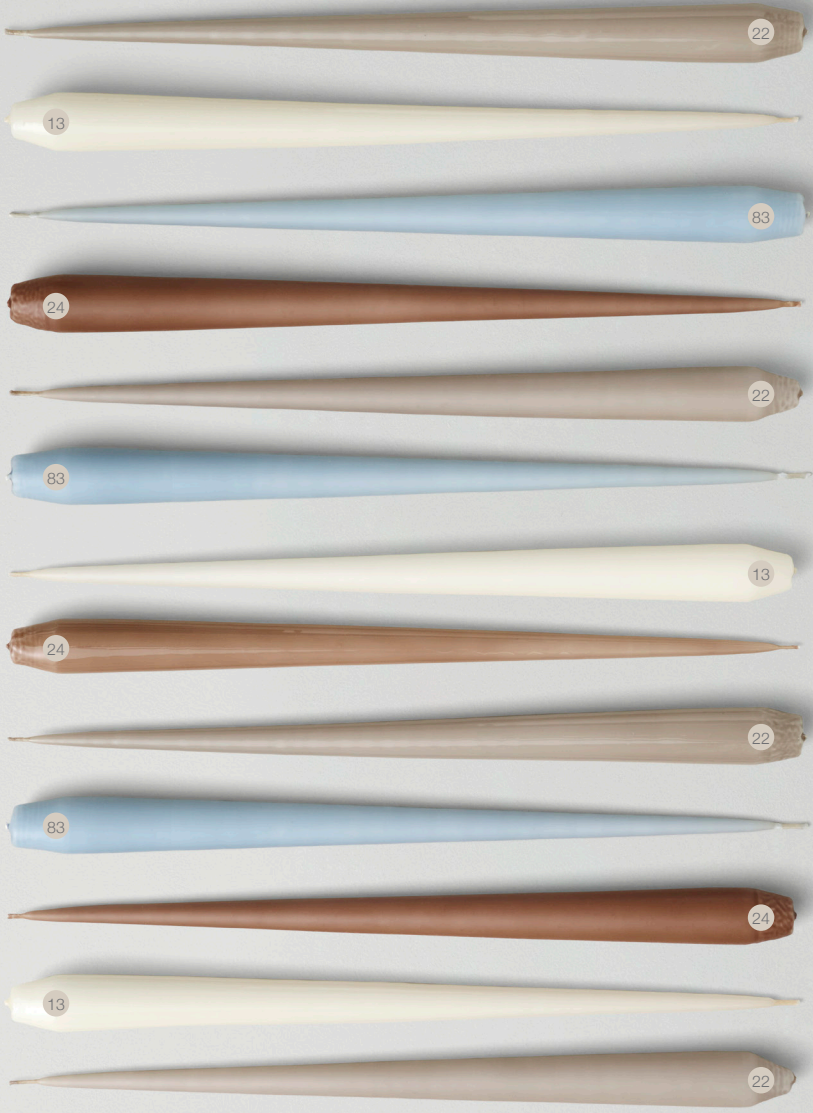
NO. 08
AMETHYST

Powerful violet loaded
with blue



NO. 08/2
DARK AMETHYST

Blackened cold violet,
darker than no. 08



All ester & erik candles are produced at our factory in Silkeborg, Denmark. Here, the entire production line is organised around the fact that two factors are key to producing well-performing candles: the quality of the raw materials and the final appearance of the candles.

