

XL

Signature Heavy Duty Passthrough – 500mm Rack W 750mm x D 765mm x H 1530mm

The Starline XL represents the next stage of 35 years of local evolution, featuring a sharper looking machine with upgraded electromechanical controls, multiple cycle options and all the services required for a seamless installation. Maintaining HACCP food safety reporting is now more simple than ever with the addition of digital wash and rinse temperature displays, making for easy and clear readings.

The XL is fitted with heavy duty stainless componentry, excellent filtration systems, and an exceptionally powerful wash pump allowing for a short cycle of only 40 seconds. This durable and powerful passthrough dishwasher is ideal for tough jobs in the busiest of kitchens.

Starline dishwashers have been made in New Zealand since 1981 and are engineered specifically for our unique local conditions and regulations. The renowned reliability of the machines is also backed by the most extensive service network and spare parts inventory in the country, ensuring that your Starline will not let you down.

Standard Features

- Autostart on door closure 40, 60 and 90 second cycles
- Washes up to 1,620 plates per hour
- Compatible with 500mm glass and dish racks
- Easy Installation supplied complete with:
 - Water supply hose
 - Dual detergent and rinse aid pumps with injector lines
 - No commissioning required
- Reliable results through robust stainless steel wash and rinse arms with precision stainless steel jets
- Easily serviced electromechanical design
- Durable stainless steel construction
- Low hot water consumption of 2.6 litres per cycle
- Reliable double filtration system via scrap trays and separate wash inlet filter

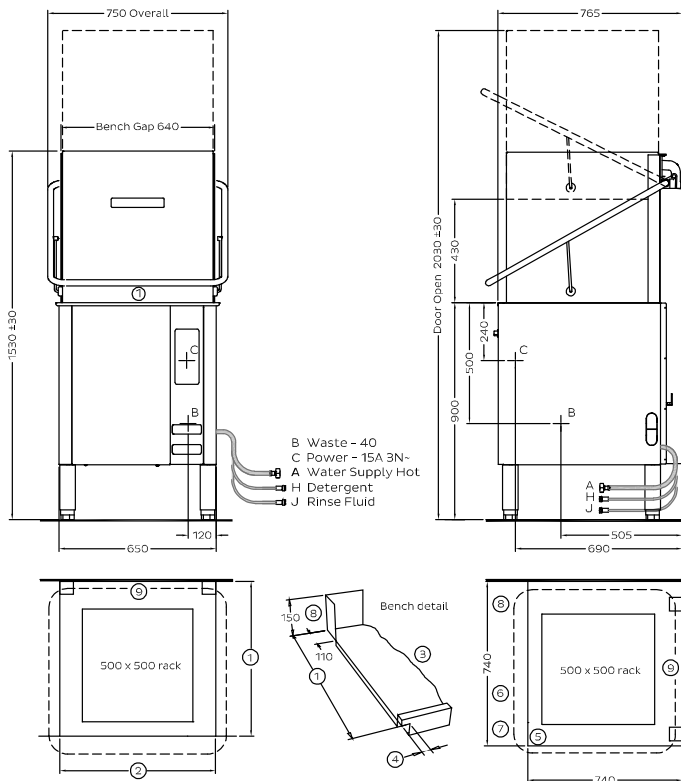
Includes:

- 2 x 600 70028 - 500mm dish rack
- 1 x 600 70029 - 500mm cup rack
- 1 x C660508 - cutlery basket
- 1 x C660503 - cutlery container



XL

Signature Heavy Duty Passthrough – 500mm Rack W 750mm x D 765mm x H 1530mm



- In-line Installation**
- ① Minimum Depth 700
 - ② Bench gap 640
 - ③ left side is mirror image
 - ④ Notch 25

- Corner Installation**
- ⑤ wall to front inside corner
 - ⑥ machine must face left for controls access
 - ⑦ allow 300 clearance to front for service access
 - ⑧ splashback return no higher than 150
 - ⑨ No obstruction behind machine

A Hot Water	
Temperature	65°C
Connection	3/4" male; hose supplied
Pressure	200-350kPa
Flow	20 litres per min
Quality	Potable & soft
Backflow Prevention	Atmospheric Vacuum Breaker
Consumption	2.6 litres per cycle

B Waste	
Connection	1.5 BSP
Line	2" BSP

C Electrical	
Three phase	400V 50Hz 15A/phase

Nominal Power Consumption
3P / 15A = 5.0kW rinse / 2.5kW wash / 9.00kW max

Dimensions	
Width	750mm
Depth	765mm
Height	1530mm
Weight	120kg

Packed Dimensions	
Width	800mm
Depth	950mm
Height	1475mm
Weight	141kg
Cubicmetres	1.1m ³

Water Quality Requirements			
Hardness	ppm	pH	
Min	20	7	
Max	100	8	

Ions	Cl ⁻	SO ₄	Fe	Mn	Cu	CL ₂
Max mg/l	100	400	0.1	0.5	0.05	0.1

Refer operator manual for installation instructions



ISO9001

All Starline products are designed and manufactured by Washtech using the internationally recognised ISO9001 quality management system, covering design, manufacture and final inspection, ensuring consistent high quality at all times.

In line with policy to continually develop and improve its products, Washtech reserves the right to change specifications and design without notice.

WASHTECH LTD
PO Box 90-548
Auckland 1142
414 Rosebank Road
Avondale
Auckland 1026
New Zealand
Phone 09 829 0930
info@washtech.co.nz
www.starline.co.nz



On call service where you are. Washtech provides full service backup, 24 hours a day, 7 days a week with factory based technicians and a comprehensive nationwide network of independent service providers. STARLINE SERVICE 09 829 0923 © Copyright Washtech 2016

an Ali Group Company



The Spirit of Excellence